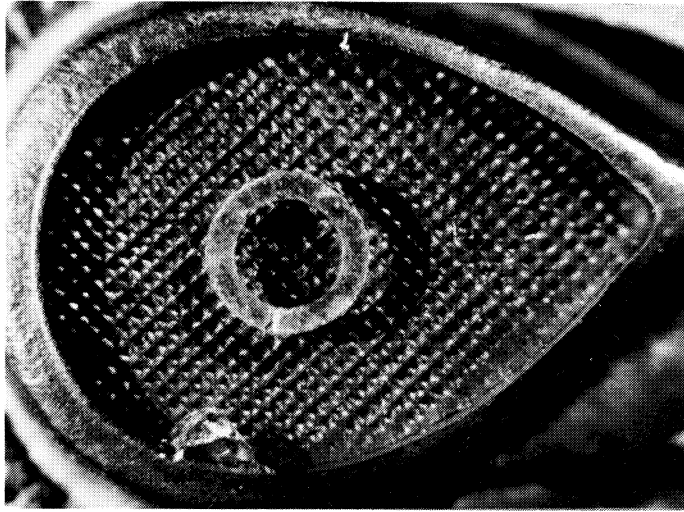
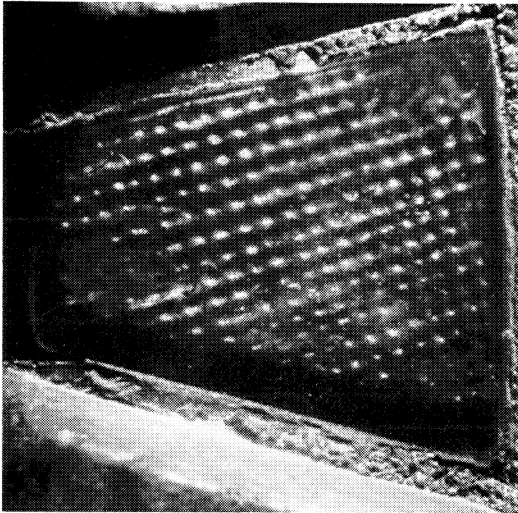


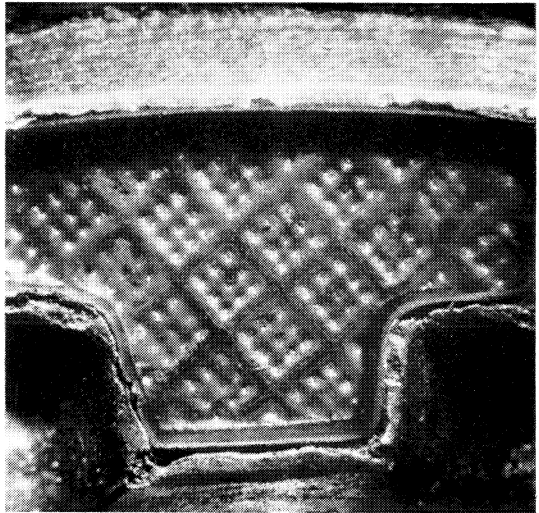
PLATE I



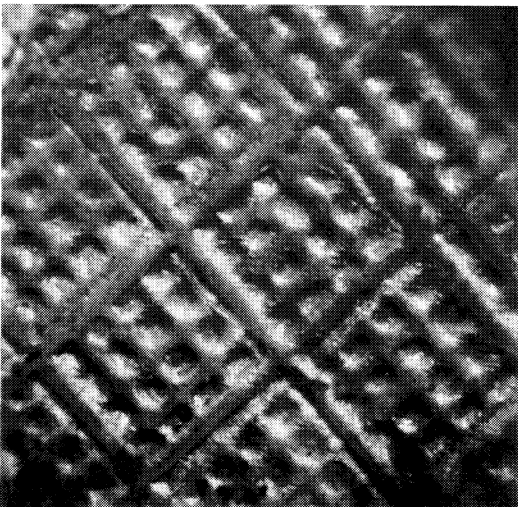
A



B



C



D

DETAILS OF PATTERNS USED ON
CROSS-HATCHED GOLD FOILS

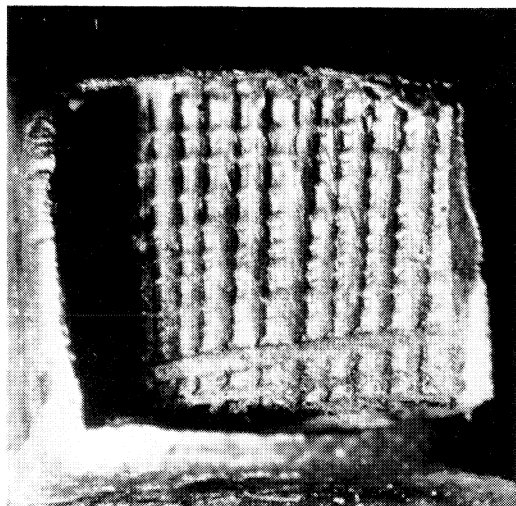
- A. Standard. This example from No. C ii, 79, TABLE III. Sc. c. 10:1 (p. 2)
- B. Standard. This example from No. 45, TABLE I. Sc. c. 10:1 (p. 2)
- C. Boxed. This example from No. 134, TABLE I. Sc. c. 10:1 (p. 2)
- D. Special Boxed. This example from No. 159, TABLE I. Sc. c. 18:1. Also showing striations (wood grain?) (p. 2)

MEDIEVAL ARCHAEOLOGY, XXI (1977)

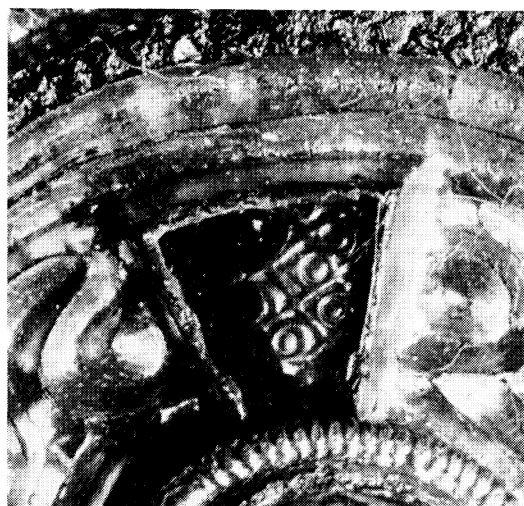
Phh.: D. Leigh

AVENT AND LEIGH, GOLD FOILS

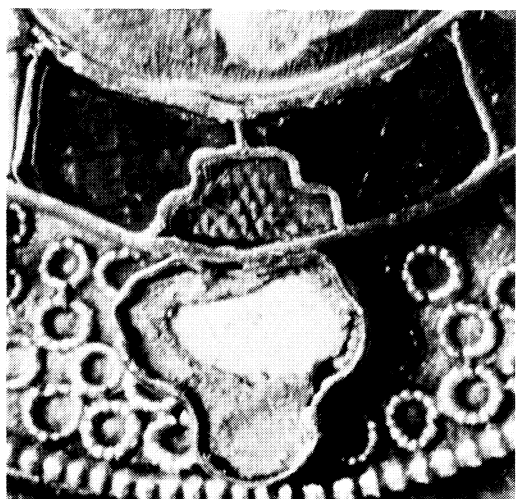
PLATE II



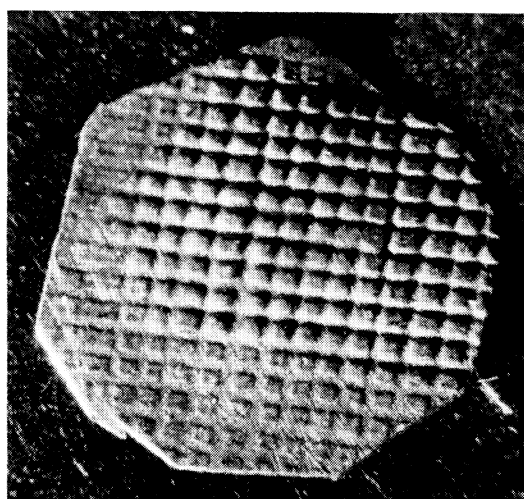
A



B



C



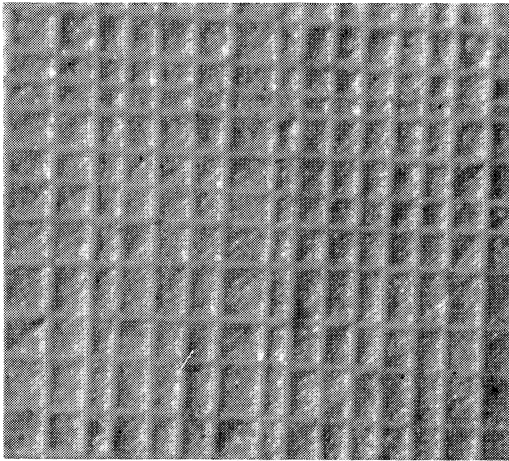
D

CROSS-HATCHED GOLD FOILS. DETAILS OF PATTERNS, MANUFACTURE

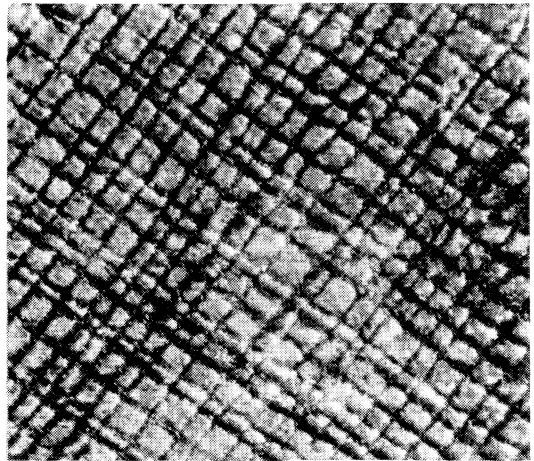
- A. Irregular Standard, also showing striations (wood grain?). No garnet. This example from Brooch O, TABLE III. Sc. c. 15:1 (p. 35)
- B. Ring-stamped. Brooch No. 167, TABLE I. Sc. c. 6:1 (p. 26)
- C. Lozenge pattern. Brooch No. 168, TABLE I. Sc. c. 6:1 (p. 26)
- D. Loose foil (Taplow) showing striations (wood grain?). Sc. c. 10:1 (p. 5)

Phh.: A, D, *D. Leigh*
B, C, *R. Avent*

PLATE III

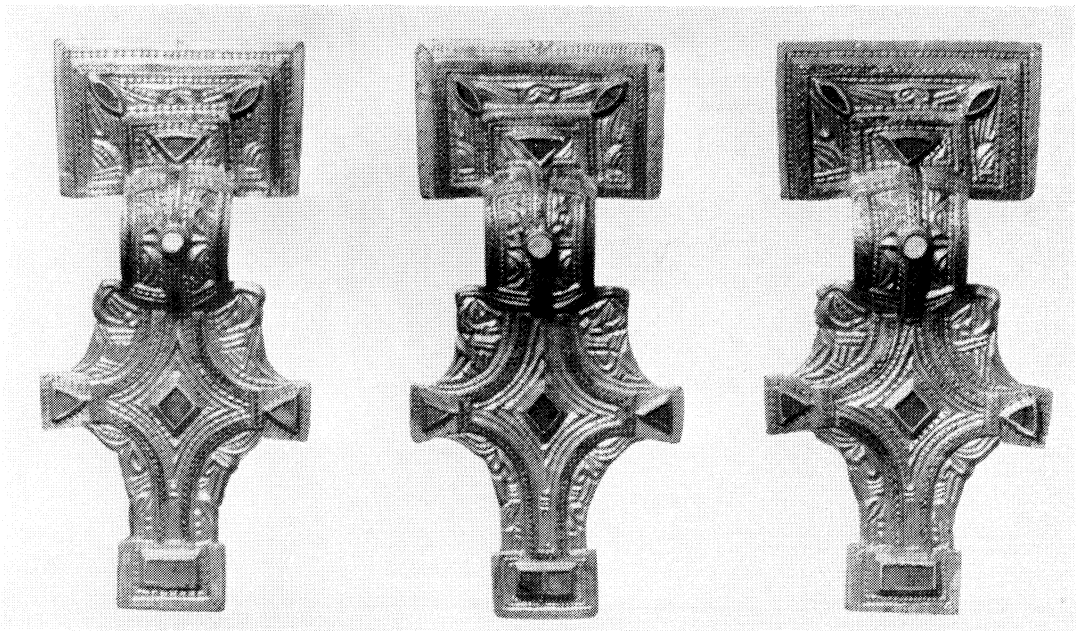


A



B

A, B. EXPERIMENTAL MANUFACTURE OF CROSS-HATCH PATTERNS: A. Result on plasticine. Sc. c. 15:1 (p. 5); B. Result on tin foil. Sc. c. 15:1 (p. 5)



C

C. SQUARE-HEADED BROOCHES FROM CHESEL DOWN, ISLE OF WIGHT Brooches Ai, Aiii, and Aii, TABLE III. Sc. 3:4 (p. 34)

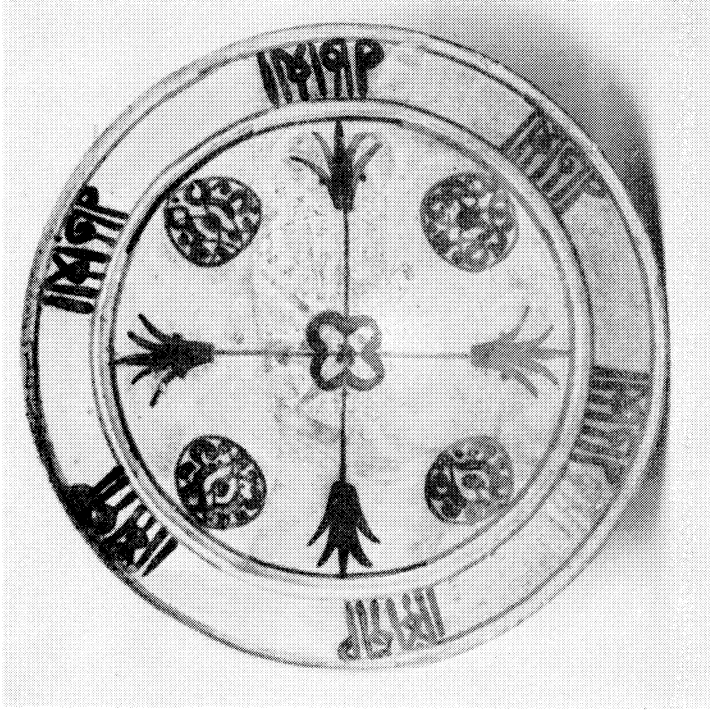
PLATE IV



A

EARLY ANDALUSIAN LUSTREWARE FOUND IN LONDON

- A. Decorated bowl. Sc. 1:2 (p. 76, No. 1)
- B. Footed dish (p. 79, No. 9)



B

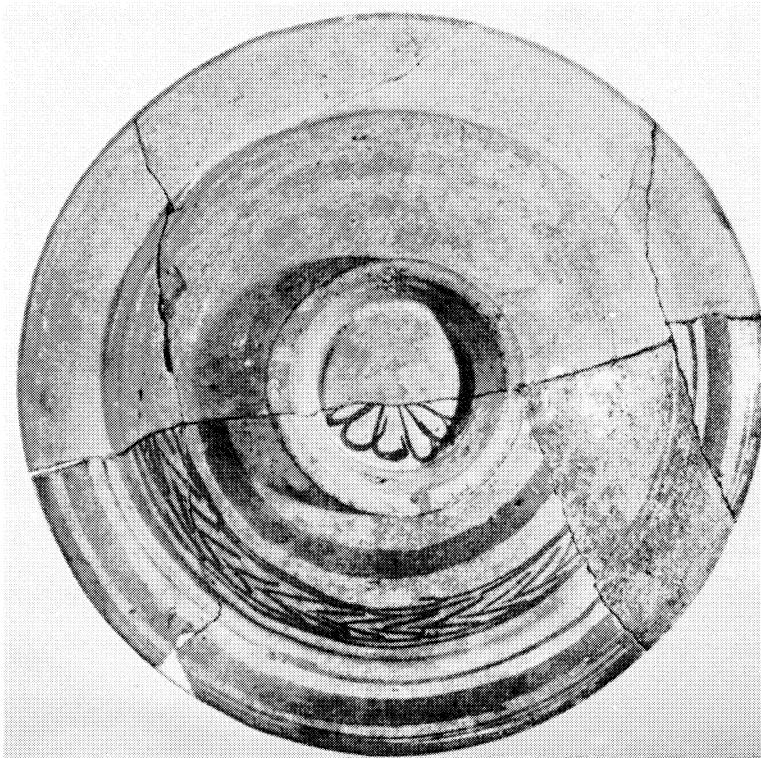
Phlt.: A, Dept. of the Environment
B, Museum of London

HURST, SPANISH POTTERY

PLATE V



B



A

A, B. LATE ANDALUSIAN OR EARLY VALENCIAN LUSTREWARE DISH
Obverse and reverse. From Dunstanburgh, Northumberland. Sc. 2:5 (p. 85, No. 21)

Phot. of the Environment
HURST, SPANISH POTTERY

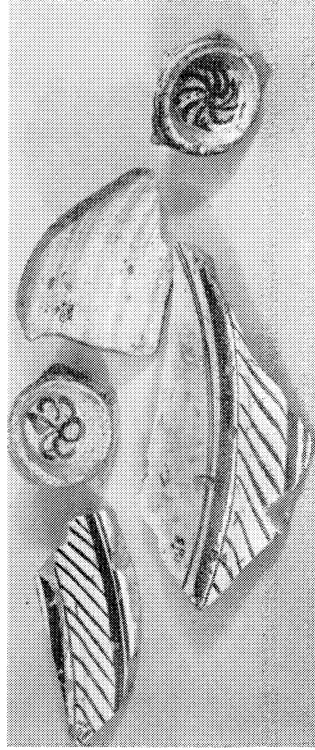
PLATE VI



A



B

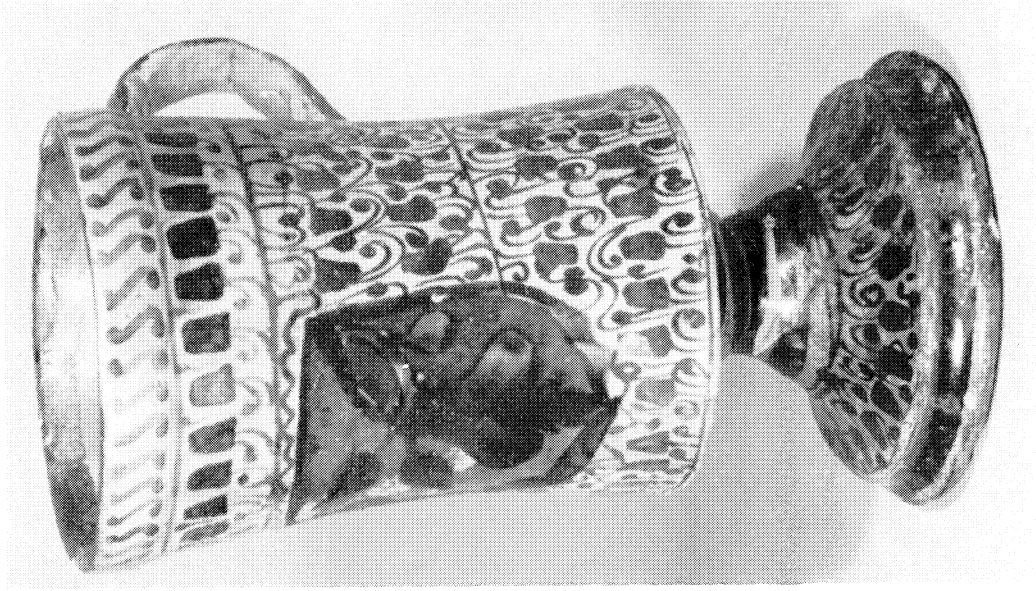


C

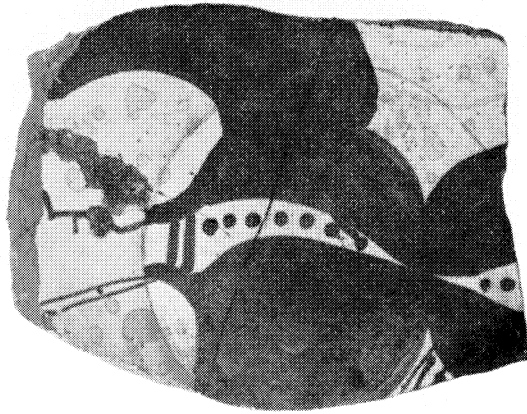
LATE ANDALUSIAN OR EARLY VALENCIAN LUSTREWARE FOUND IN BRISTOL

- A. Flanged dish (p. 87, No. 23)
- B, C. Sherds from flanged dishes and jugs (pp. 84, 88, 89, Nos. 18 top centre, 19 extreme right, 24 top left and bottom, 27 top right)

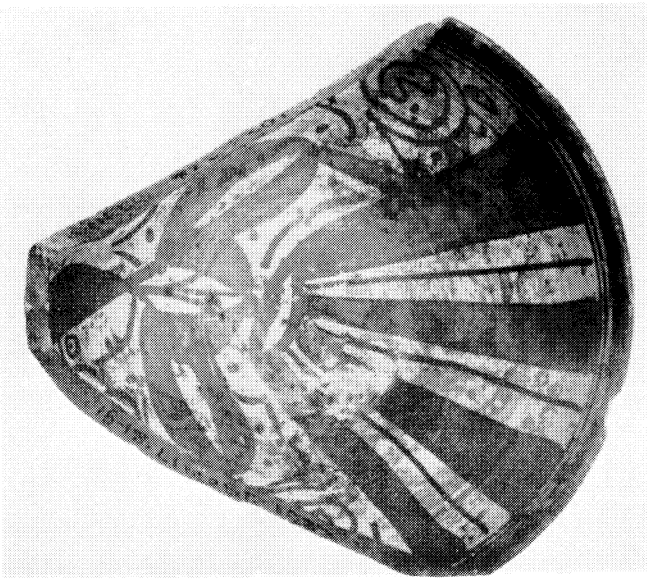
Phot.: British Museum
HURST, SPANISH POTTERY



C



B



A

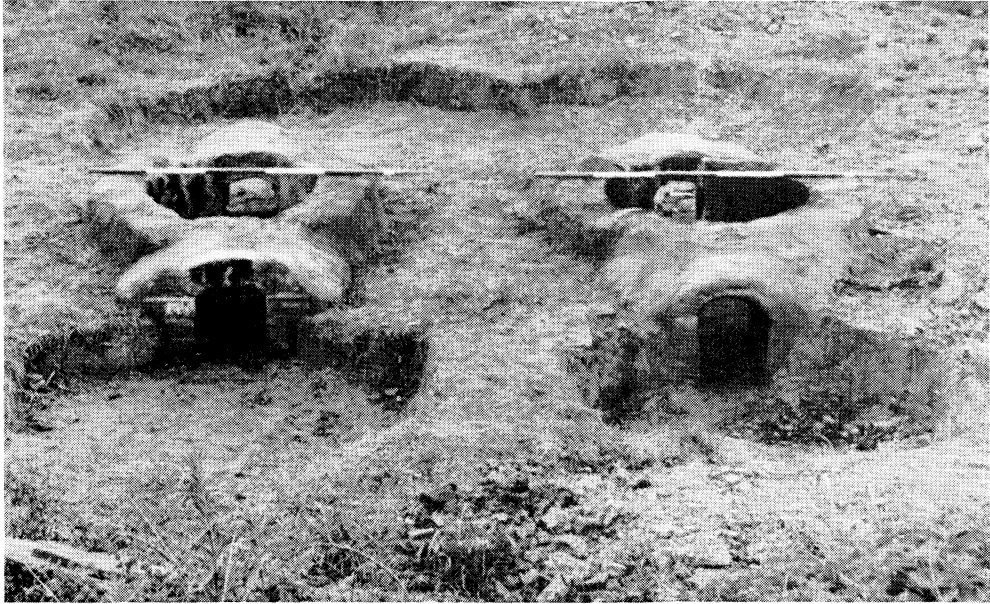
MATURE VALENCIAN LUSTREWARE FOUND IN LONDON

- A. Pedestal bowl. *Sc. 4:7* (p. 92, No. 36)
- B. Flanged dish. *Sc. 4:7* (p. 93, No. 37)
- C. Pedestal jug. *Sc. 4:7* (p. 93, No. 39)

Phil.: A, B. *Dept. of the Environment*
C. *Museum of London*

HURST, SPANISH POTTERY

PLATE VIII



A



B

BARTON ON HUMBER EXPERIMENTAL POTTERY KILNS

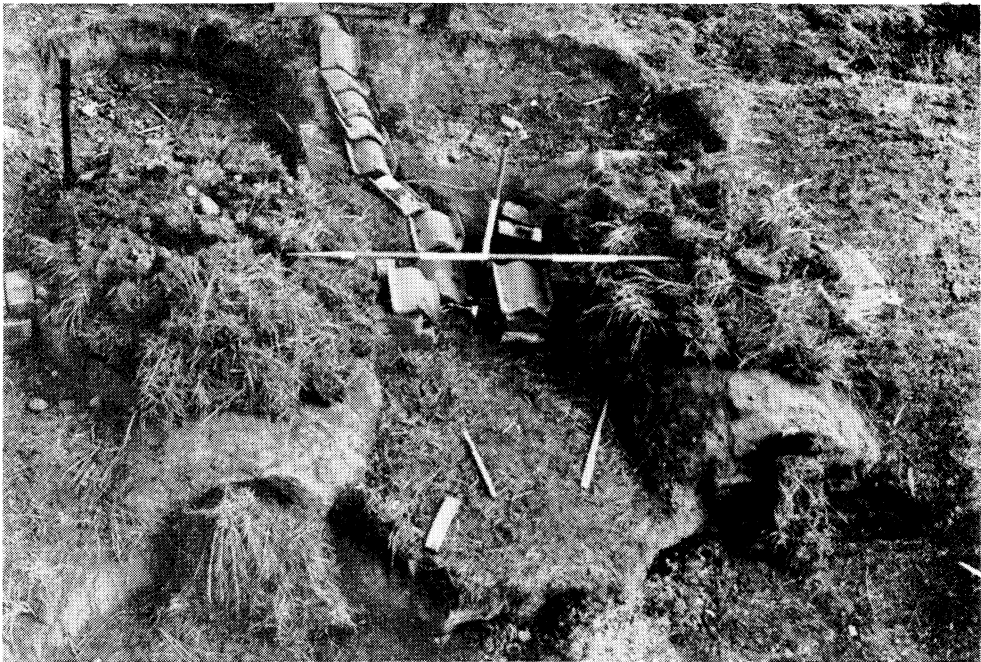
- A. Double-flued kilns, looking S., kiln 1 on left (p. 111)
- B. Kiln 1 loaded and ready for firing (p. 112)

Ph.: H. Atkinson, K. Stubbs

PLATE IX



A



B

BARTON ON HUMBER EXPERIMENTAL POTTERY KILNS

- A. Double-flued kilns firing, loads capped with tiles (p. 116)
- B. Double-flued kilns capped and flues blocked for cooling (p. 116)

Phh.: H. Atkinson, K. Stubbs

PLATE X



A. BARTON ON HUMBER EXPERIMENTAL POTTERY KILNS. Multi-flued kiln during firing (p. 117)



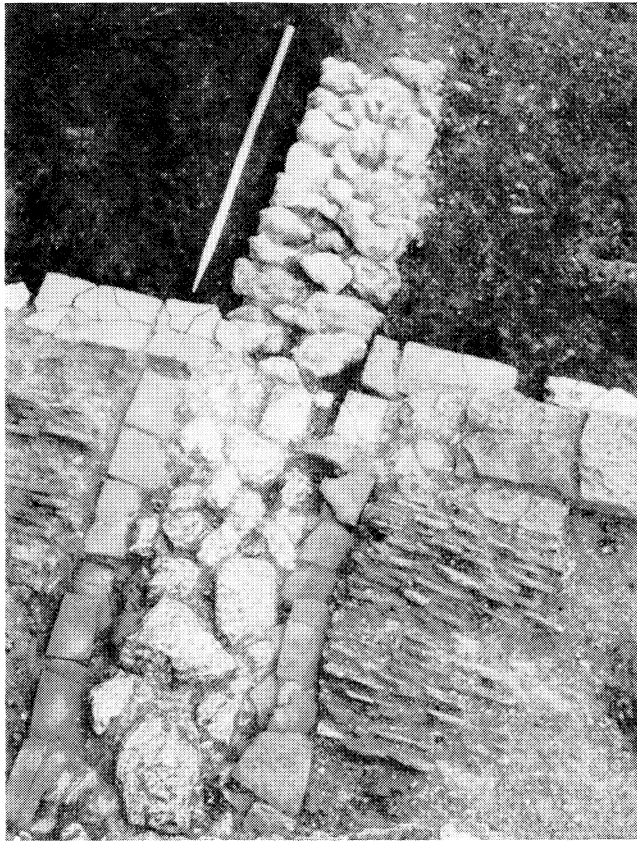
B. KINGS LANGLEY PALACE, LE LONGREWE. Building C looking W. Room 1/2, cut by Pit 55, in foreground (p. 131)

*Phh.: A. H. Atkinson, K. Stubbs
B. J. Brown*

PLATE XI



A

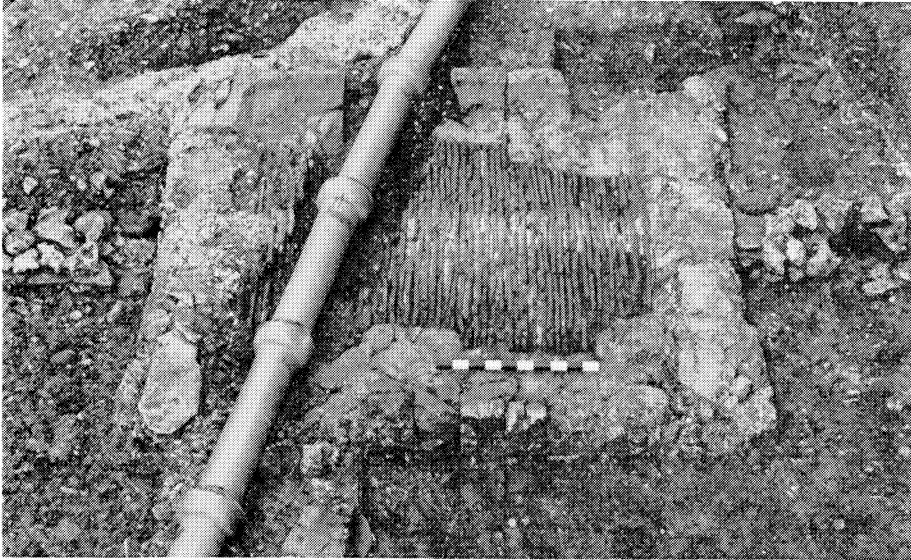


B

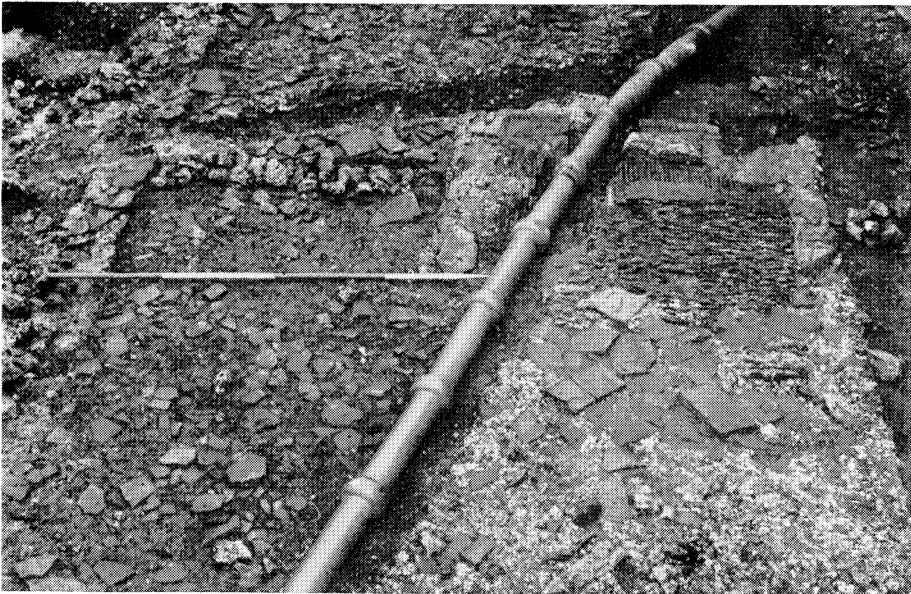
KINGS LANGLEY PALACE,
SITE 1

- A. Circular mass of lead
beneath fireplace in Room 9,
looking S. (p. 129)
- B. Building C, fireplaces
between Rooms 8 and 9,
looking S. (p. 135)

PLATE XII



A



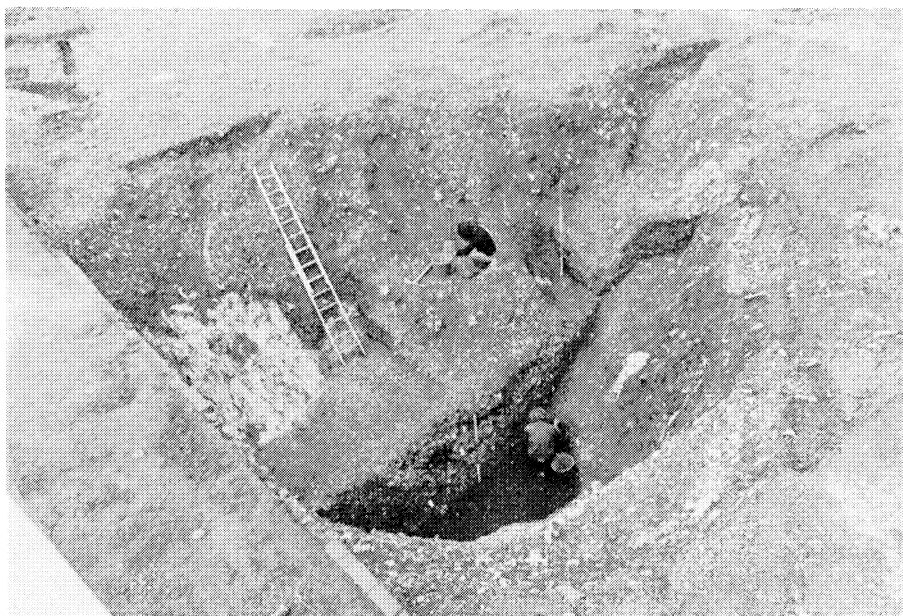
B

KINGS LANGLEY PALACE, SITE 1

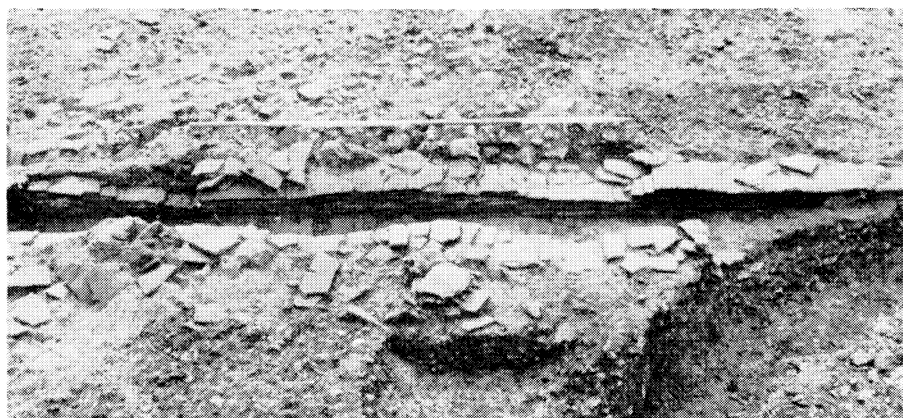
- A. Building C, fireplace serving Rooms 6 and 7, looking W. (p. 134)
- B. Phase 3 floor and hearth over fireplace seen in A (p. 134)

Phh.: J. Brown

PLATE XIII



A



B

KINGS LANGLEY PALACE, SITE 2

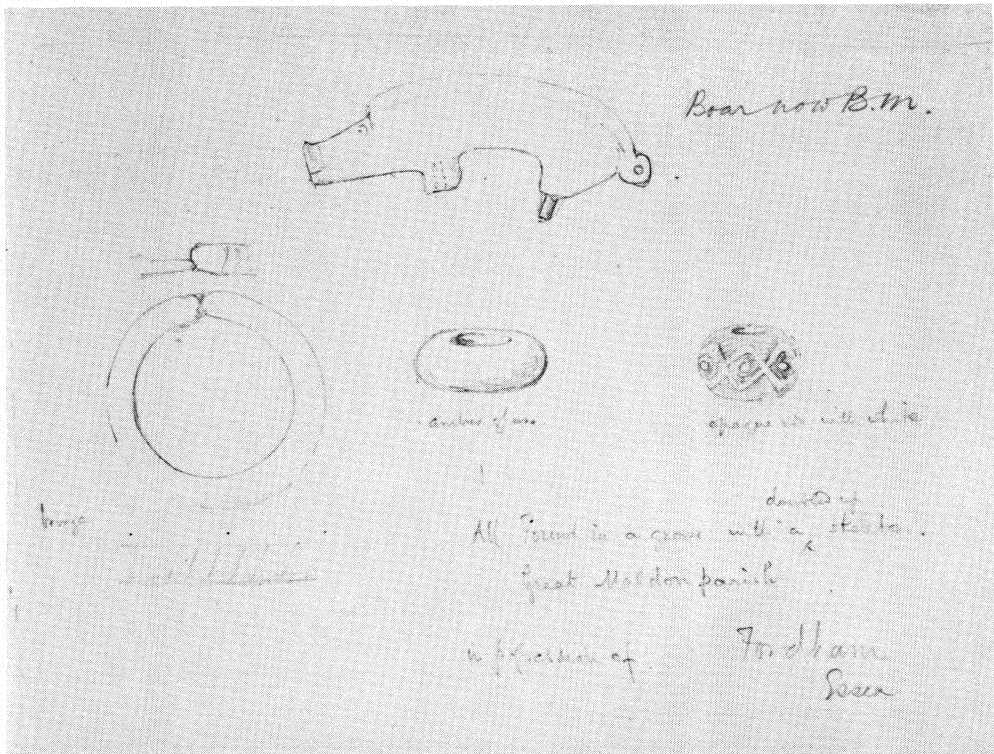
- A. Weathering cone of great well, looking SW. (p. 137)
- B. Room 2, conduit, looking W. (p. 139)

Phh.: A. G. Smith
B. D. S. Neal

PLATE XIV



A



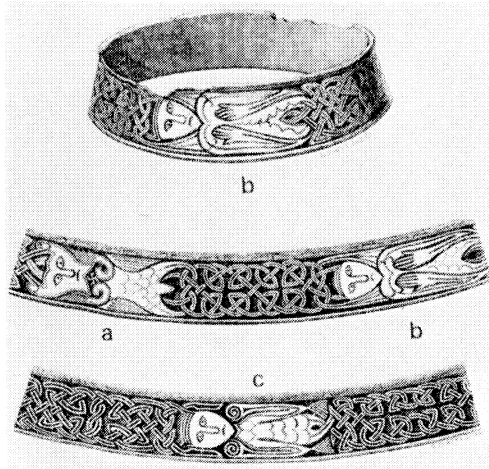
B

ANGLO-SAXON BRONZE BOAR FROM GILDEN MORDEN, CAMBS. (p. 166)

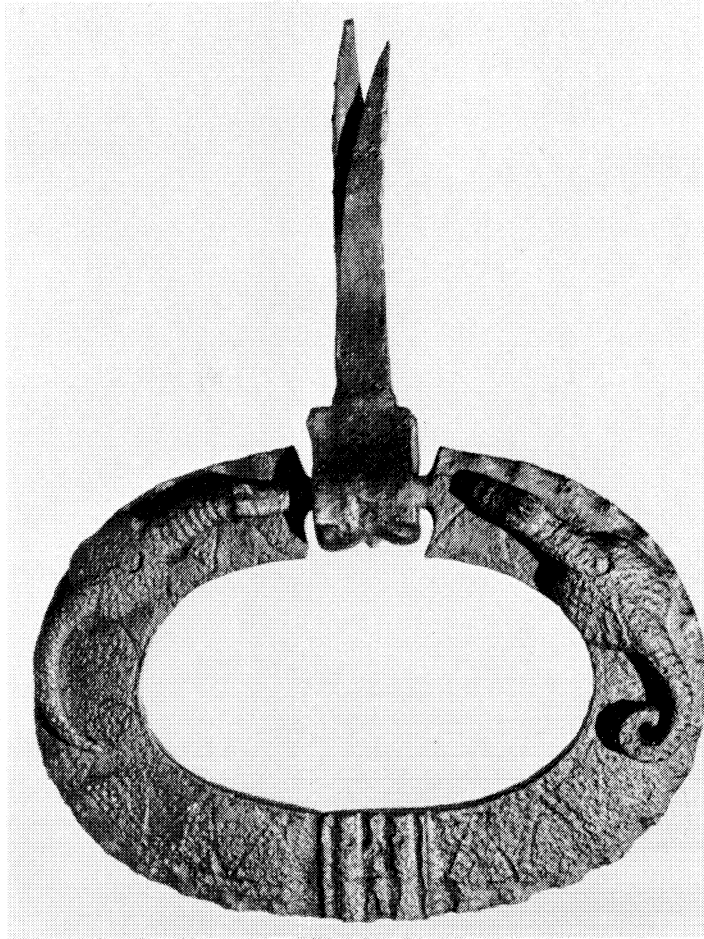
A. Present state. Length 6.4 cm.

B. Drawing of boar and associated finds made c. 1882-3. British Museum

PLATE XV

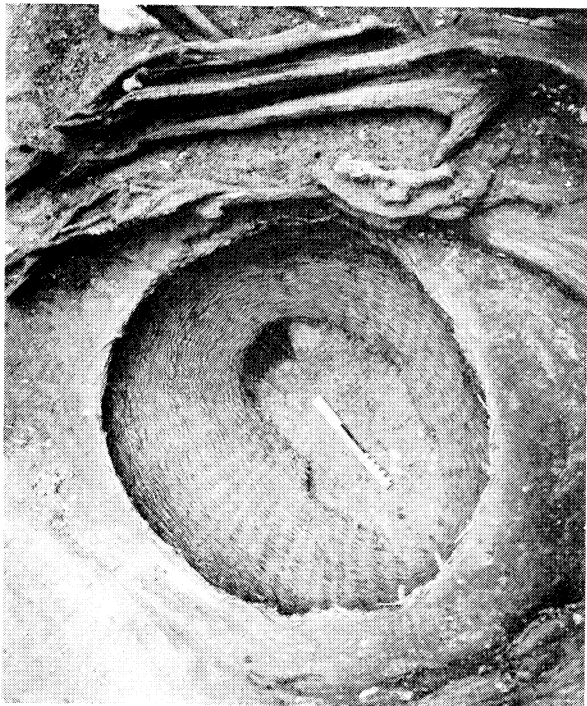


A. SILVER GILT CUP
MOUNT FROM
BROUGHAM, CUMBRIA.
Engraving by O. Jewitt from
Archaeol. Jnl., iv (1847)
(p. 176)



B. IRON CLOSING RING
FROM
CAREBY CHURCH,
LINCS. (p. 194)

PLATE XVI



A



B



C

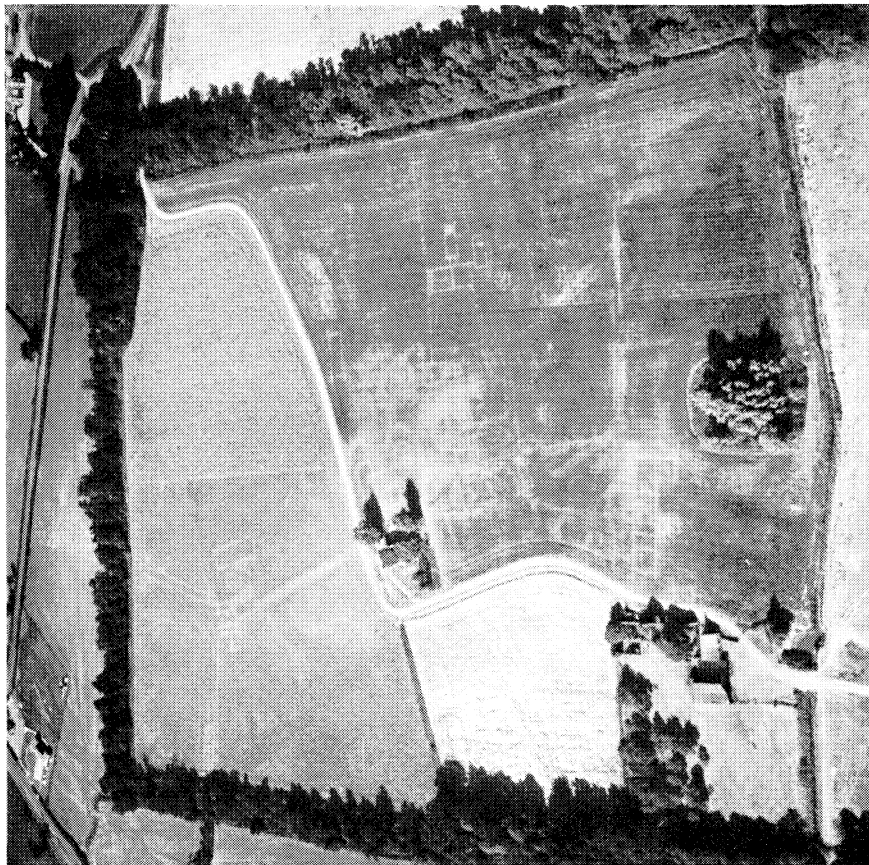
- A. ODELL, BEDFORDSHIRE. Remains of wicker basket reused as filter in Saxon well (p. 204)
- B. JAYWICK, CLACTON, ESSEX. Gold bracteate. Sc. 1:1 (p. 206)
- C. ST MARK'S CHURCH, LINCOLN. 10th-century grave-cover from foundations for buttress of 13th-century church. Sc. 0:0 (p. 231)

Phh.: A, Bedfordshire Co. Council

B, British Museum

C, H. N. Hawley

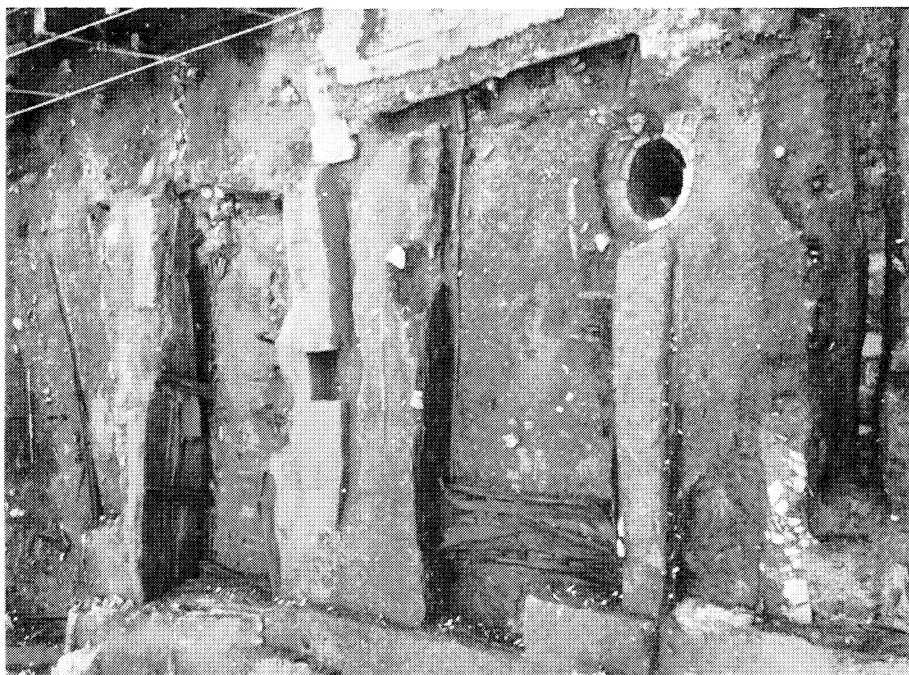
PLATE XVII



B. WEST DEREHAM, NORFOLK. Ground plan of St Mary's Abbey revealed by air-photography (p. 227)

Phot.: A. M. S. Duffy, L.R.P.S., York Archaeological Trust
B. D. A. Edwards, Norfolk Archaeological Unit

MEDIEVAL BRITAIN



A. NOS. 16-22 COPPERGATE, YORK. Three adjacent 10th to 11th-century timber buildings with con-temporary ditch (p. 215)

MEDIEVAL ARCHAEOLOGY, XXI (1977)

THE SOCIETY FOR MEDIEVAL ARCHAEOLOGY

MONOGRAPH SERIES

A series of monographs dealing with particular aspects of the archaeology of the British Isles between A.D. 400 and 1600.

1. G. Bersu and D. M. Wilson, *Three Viking Graves in the Isle of Man* (1966), price £4.50 (£3.50).
2. F. W. B. Charles, *Medieval Cruck-building and its Derivatives* (1967), out of print.
3. P. A. Rahtz, *Excavations at King John's Hunting Lodge, Writtle, Essex, 1955-57* (1969), price £4.50 (£3.50).
4. Audrey L. Meaney and Sonia Chadwick Hawkes, *Two Anglo-Saxon Cemeteries at Winnall, Winchester, Hampshire* (1970), price £3 (£2).
5. H. E. Jean Le Patourel, *The Moated Sites of Yorkshire* (1974), price £5 (£4).
6. G. T. M. Beresford, *The Medieval Clay-land Village: Excavations at Goltho and Barton Blount* (1975), price £4.50 (£3.50).
7. Helen Clarke and Alan Carter, *Excavations in King's Lynn, 1963-1970* (1977), price £12.50 (£10).

Subscribers to the whole series, whether members of the Society or not, are entitled to each monograph at the lower price (in brackets).

Obtainable from Mrs A. F. Morley, 6 Church Grove, Little Chalfont, Amersham, Bucks., HP6 6SH

It is hoped that future titles will include: J. N. L. Myres, *The Anglo-Saxon Cemetery at Illington, Norfolk*; J. G. Hurst, *Excavations at Wharram Percy, N. Yorks., 1950-1960*; C. M. Mahany *et al.*, *Excavations in Stamford, Lincs.*

MEDIEVAL ARCHAEOLOGY

VOLUME XXI, 1977

Page

RICHARD AVENT AND DAVID LEIGH	
A study of cross-hatched gold foils in Anglo-Saxon jewellery	1
KENNETH JAMES BARTON	
Some examples of medieval oxidized and decorated earthenwares occurring in North-Eastern France	47
J. G. HURST	
Spanish pottery imported into medieval Britain	68
GEOFFREY F. BRYANT	
Experimental kiln firings at Barton-on-Humber, S. Humberside 1971	106
DAVID S. NEAL	
Excavations at the palace of Kings Langley, Hertfordshire 1974-1976	124
NOTES AND NEWS:	
A boar figurine from Guilden Morden, Cambridgeshire (Jennifer Foster); A chamber grave from Spong Hill, North Elmham, Norfolk (Catherine Hills); A cup-mount from Brougham, Cumbria (Richard N. Bailey); The production of red-painted pottery at Stamford, Lincolnshire (Kathy Kilmurry); Saxon Southampton (Alexander R. Rumble); Polyfocal settle- ment and the English village (C. C. Taylor); A closing-ring from Careby, Kesteven, Lincolnshire (L. A. S. Butler); Pottery with roller-stamped linked circle decoration from Lincolnshire (Paul Everson); An aisled hall at Withington, Herefordshire (M. R. Bismanis); The Oban Conference, 1977 (James Graham-Campbell)	166
MEDIEVAL BRITAIN IN 1976:	
I. Pre-conquest: compiled by Leslie E. Webster	204
II. Post-conquest: compiled by John Cherry	222
REVIEWS:	
David M. Wilson (ed.), <i>The Archaeology of Anglo-Saxon England</i> (Catherine Hills); Barry Cunliffe, <i>Excavations at Porchester Castle, II: Saxon</i> (Philip Rhatz); Philip Rhatz, <i>Excavations at St Mary's Church, Deerhurst</i> (R. D. H. Gem); Erik Moltke, <i>Runerne i Danmark og deres oprindelse</i> (R. I. Page); W. Janssen, <i>Studien zur Wüstungsfrage im frankischen Altsiedland zwischen Rhein, Mosel und Eifelnordrand</i> (T. C. Champion); Guy Lefranc, <i>Vestiges de mottes féodales en Flandre intérieure</i> (H. E. Jean le Patourel); Peter Hartman, <i>Keramik des Mittelalters und der frühen Neuzeit aus Nordfriesland</i> (J. G. Hurst); <i>Rotterdam Papers II. A contribution to medieval archaeology</i> (Helen Clarke); M. de Bouard, <i>Manuel d'Archéologie Médiévale de la Fouille à l'Histoire</i> (J. G. Hurst); Royal Commission on Historical Monuments (England), <i>An Inventory of Archaeological Sites in North-East Northamptonshire</i> (H. E. Jean le Patourel); Royal Commission on Ancient and Historical Monuments in Wales, <i>Houses of the Welsh Countryside: a Study in Historical Geography</i> (Iorwerth C. Peate); Royal Commission on Historical Monuments (England), <i>English Vernacular Houses: a Study of Traditional Farmhouses and Cottages</i> (S. E. Rigold); SKALK: <i>Nyt om gammelt</i> 1977, nos. 1-6 (Leslie Webster)	263
ACCOUNTS OF THE SOCIETY, 1976	286
LIST OF OFFICERS AND COMMITTEES OF THE SOCIETY, 1977	288