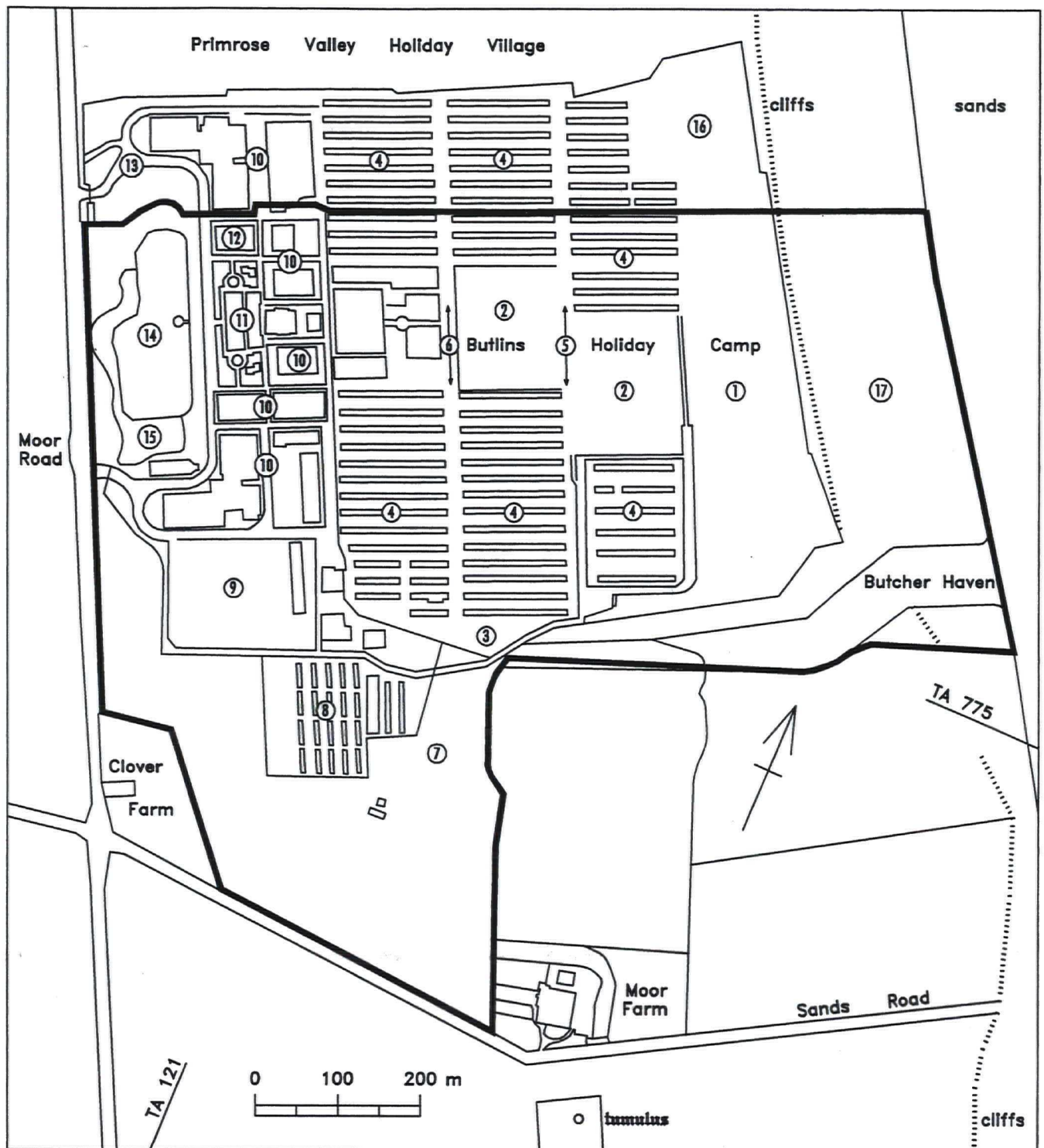


Figure 3: Principal features of Butlins Camp, with the proposed development and earlier field boundaries superimposed



- | | |
|---------------------------|---|
| 1 open former fields | 10 main entertainment blocks |
| 2 playing fields | 11 open air pool and fountains |
| 3 open area | 12 heavily terraced area with deep drains |
| 4 chalets | 13 north gate (now part of Primrose Valley) |
| 5 embanked grass track | 14 boating lake |
| 6 track bordered by trees | 15 mature trees |
| 7 open areas | 16 open field, traces of ridge and furrow |
| 8 staff chalets | 17 cliff area (open scrub) |
| 9 car park (tarmac) | — boundary of main development |

Figure 4: Itinerary of 2001 walkover survey, showing current land-use

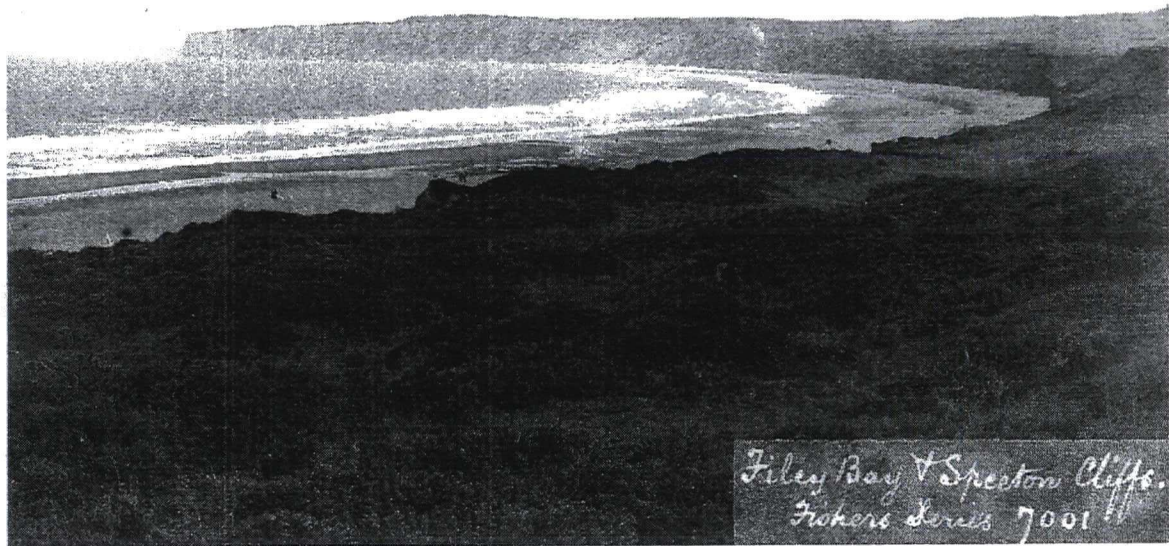


Plate 1 The clifftop area in front of the future Butlins Camp, c 1900, looking south-east towards Flamborough Head. Flat Top Gill, leading to Butcher Haven, is on the extreme right (Cecil Mowthorpe Collection)



Plate 2 The site of the future Butlins Camp (centre rear) from Graffitoe Farm, c 1920, looking north-east towards Filey Brigg. The farm in the trees (centre right) is Moor Farm, near *Stir Heath Howe*. The rough pasture in the foreground are still-extant prehistoric earthworks, part of a series of mostly ploughed-out features on high ground overlooking the site area (Cecil Mowthorpe Collection)

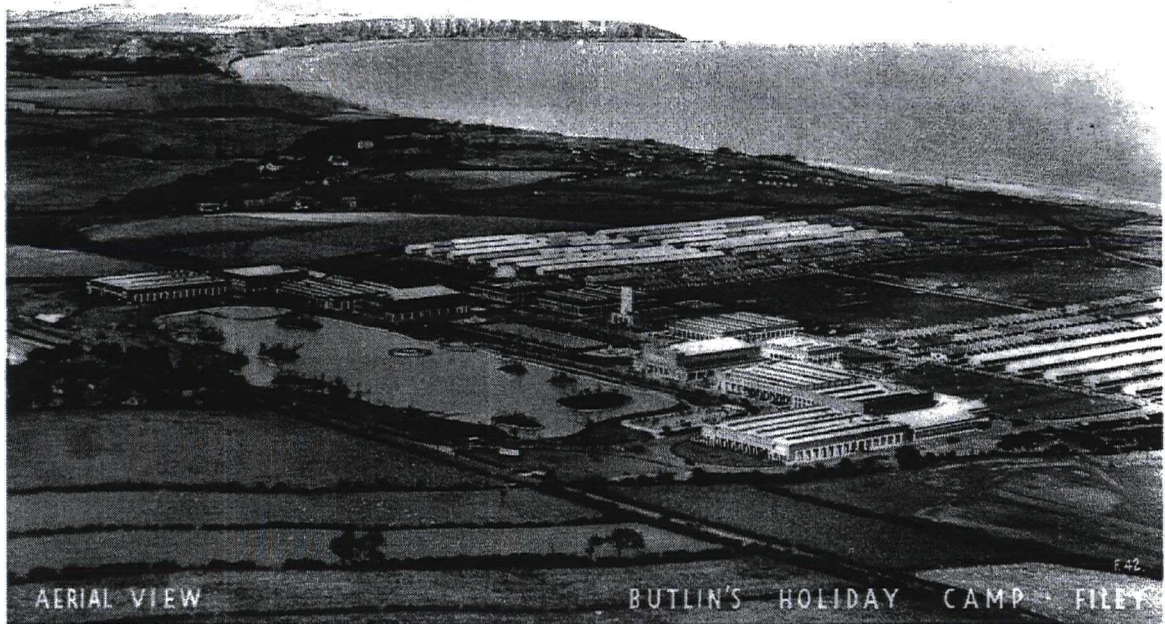


Plate 3 Aerial view of Butlins Camp during its first full season, 1946, looking north-east towards Filey Brigg (Cecil Mowthorpe Collection).

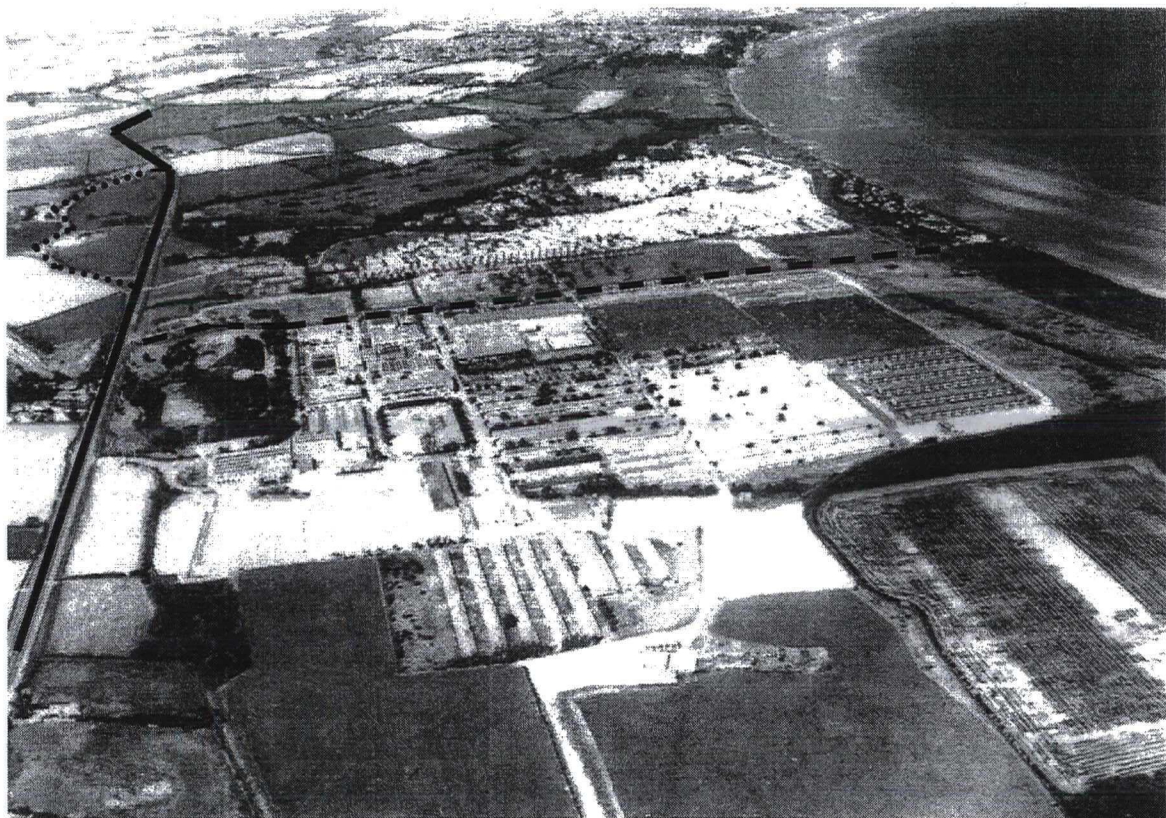
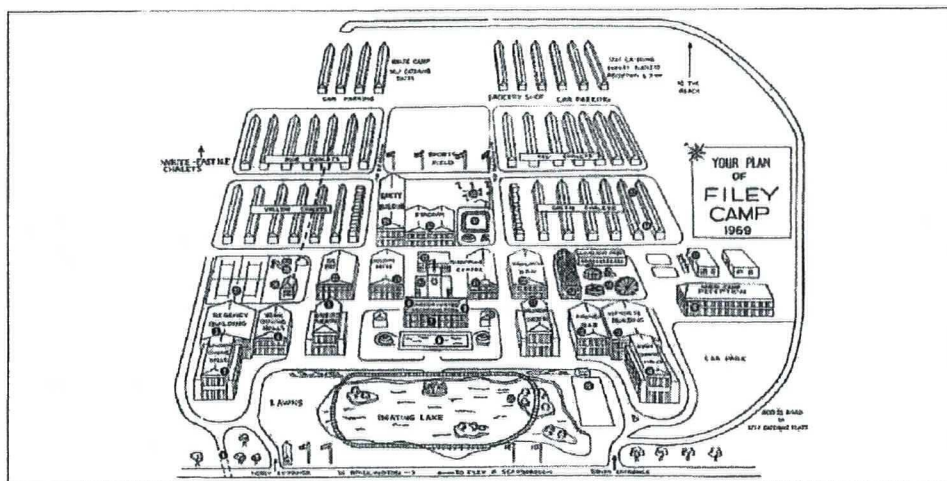


Plate 4 Aerial view of Butlins Camp in its final years, c 1986, looking north. The view dates to the period following the sale of the northern strip to Primrose Valley Caravan Park (new boundary dashed), and the demolition of buildings in that area. The straightened main road (solid line) and part of the original line curving around the south end of Fowthorpe Closes (dotted) can clearly be seen.



YOUR GUIDE TO A PERFECT BUTLIN HOLIDAY AT FILEY

- | | |
|--|---|
| <ol style="list-style-type: none"> 1. SUBWAY TO RAILWAY STATION 2. WINDSOR DINING HALL 3. REGENCY BUILDING
Theatre Bar, Discotheque. 4. GROSVENOR RESTAURANT AND YORK DINING HALL 5. EMPIRE BUILDING
includes Empire Theatre, Ladies' and Gents' Hairdressing Saloons, Newspapers and Turf Accountants. 6. OASIS COCKTAIL BAR 7. INDOOR HEATED POOL 8. AMUSEMENTS ARCADE POOL 9. OUTDOOR POOL 10. BRITISH RAIL OFFICE 11. CHILDREN'S THEATRE
including Parents' Lounge, General Post Office, Photographic Shop and Shoe Shops. 12. FRENCH BAR 13. VIENNESE BUILDING
includes Viennese Ballroom, and Viennese Coffee Bar. 14. KENT DINING HALLS 15. ROLLER SKATING RINK 16. RECEPTION 17. GARAGE AND PETROL PUMPS 18. FREE AMUSEMENTS PARK 19. AMUSEMENTS ARCADE | <ol style="list-style-type: none"> 20. BEACHCOMBER BUILDING
includes Licensed Lounge, Coffee Bar, Old Time Ballroom, Games Room, Lounge, White and Chinese Restaurant. 21. SHOPPING CENTRE
includes R.C. Chapel. 22. LAUNDERETTE, SUNDAR BAR AND IRONING ROOM 23. RESTAURANT AND GOLDEN GRILL 24. HOLIDAY PAYRE RESTAURANT
C. of E. Chapel. 25. THE FEY including FISH RESTAURANT 26. ROPE RAILWAY STATION 27. TENNIS COURTS 28. CHILDREN'S PADDLING POOL AND PLAYGROUND 29. GAILETY BUILDING
includes T.V. Rooms (B.C. and I.T.V.), Gailety Theatre, Quiet Lounge, Amusements Arcade, Shopping Centre, Table Tennis and Darts, Lost Property Office and Campers Mail Office. 30. PUTTING GREEN 31. PETER PAN RAILWAY 32. STADIUM BUILDING
includes Coffee Bar, Sports Stadium, Bingo, Billiards Hall. 33. CHILDREN'S NURSERY AND INFANTS' CENTRE 34. FIRST AID POST 35. BOATING LAKE AND MINIATURE RAILWAY |
|--|---|

Plate 5 Map of the camp, 1969

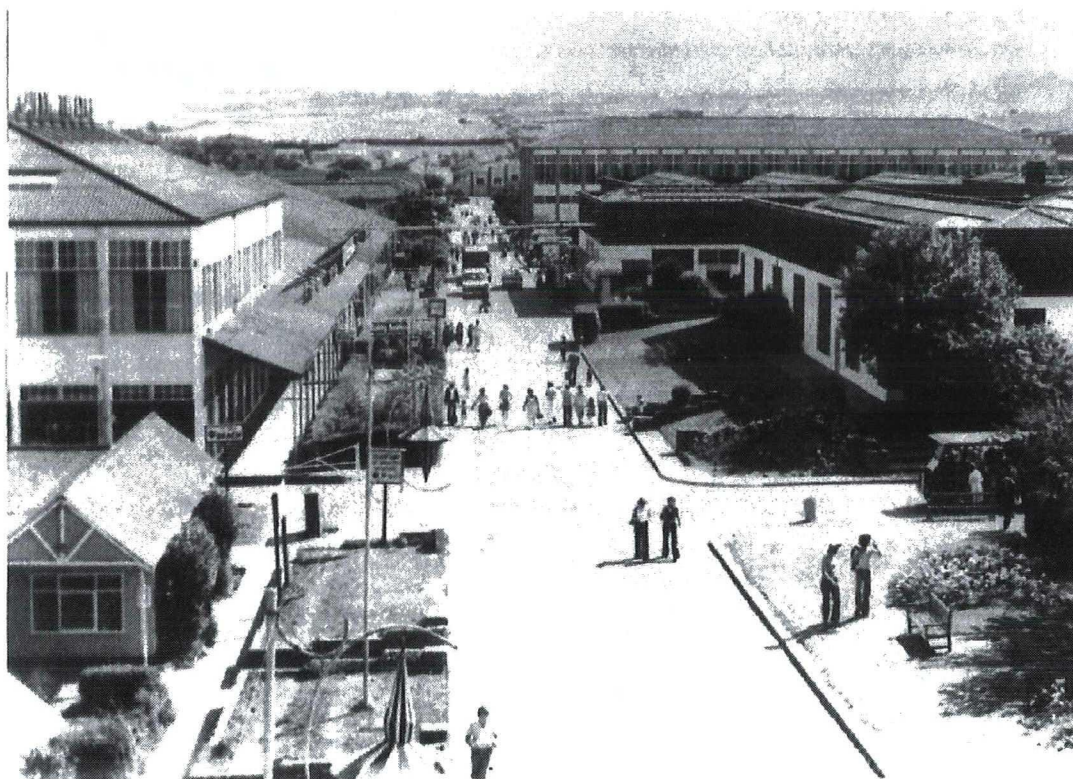


Plate 6 The main street between the entertainment blocks in the 1950s, looking south



(a)

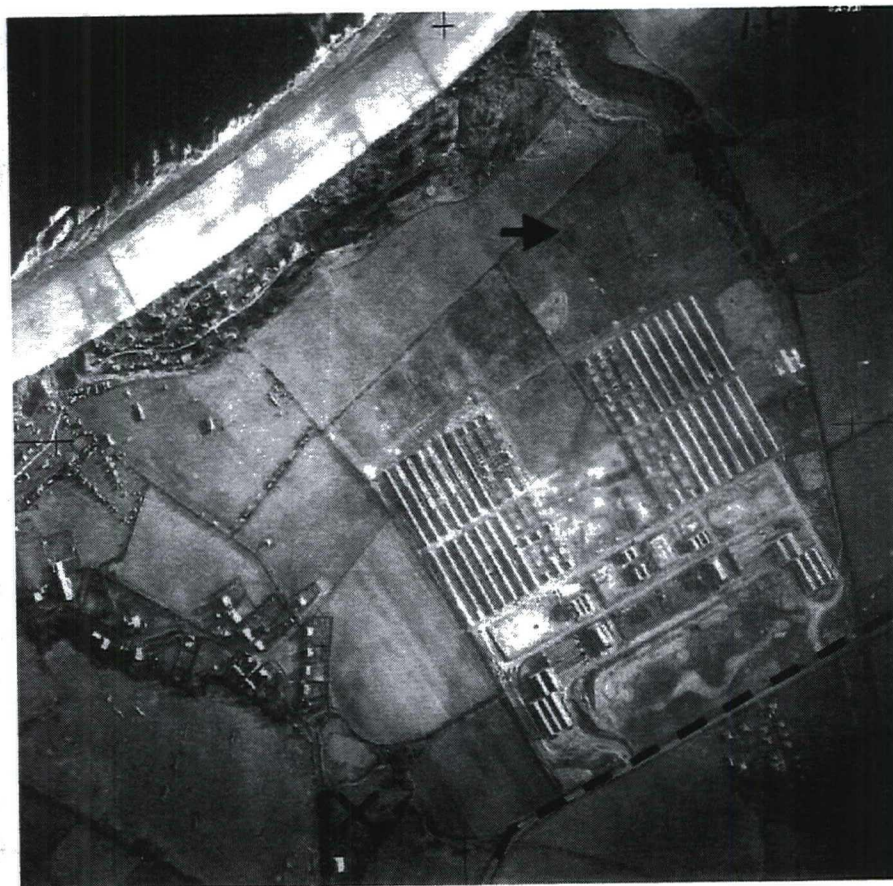


(b)

Plate 7 Aerial photographs taken to the south of the camp: (a) 1st August 1940. Enclosure period fields either side of Hunmanby Gap road to the south of RAF Hunmanby Moor (left). The small wood to the right of the road, opposite Moor Farm (arrowed) contains *Stir Heath Howe* burial mound, ploughed out by 1940, lay to the south (right) in the same field. The southern boundary of the camp is bounded by Flat Cliff Gill, leading to Butcher Haven; (b) 11th December 1940. Similar view, showing the straight main coast road (bottom), and the southern part of the camp still under construction (National Monuments Record)



(a)



(b)

Plate 8 Aerial photographs of the camp: (a) 1st August 1940. RAF Hunmanby Moor under construction. A set of cropmarks (arrowed) shows faintly as thin lines on the former *Warren Hill*, an area covered by later self-catering chalets in 1969. Post-medieval ridge-and-furrow and hedgebanks still survives in the fields between the camp buildings and the cliff. To the left of the camp are old enclosures around the medieval township of *Fowthorpe* (marked by X). The main enclosure period road, c 1809 (dashed), changes direction where it meets these pre-existing features, although has been straightened in recent years. Within the camp, enclosure period field boundaries can still be seen; (b) 11th December 1940. A similar view, with the outline of the boating lake (wartime parade ground) more clearly developed (National Monuments Record)



(a)



(b)

Plate 9 Aerial photographs to the north of the camp: (a) 1st August 1940. Mixed area of irregular old enclosures north of *Fowthorpe* township, on Fowthorpe Lane (dashed), partly replaced by fields dating to the 19th-century enclosure. The older enclosures (Fowthorpe Closes, already part of Filey golf course by 1940) show strong traces of what appear to be late medieval or early post-medieval ridge-and-furrow ploughmarks. This is the site of 'old walls' (marked X) found in the 19th century. To the south of the wooded area of Long Whin Gill (centre) is Primrose Valley Caravan Park, where late Roman pottery (arrowed) was found in the 1920s and 1930s during initial redevelopment; (b) 11th December 1940. Similar view, showing the junction of Fowthorpe Lane with the main coast road (National Monuments Record)



Plate 10 Roofless chalets in the north-east camp, with wide grassed strips surviving between, looking west



Plate 11 The north-east camp from the enclosure-period field on the clifftop, looking west



Plate 12 Enclosure-period hedgerow and fields to the east of the main camp, looking north-east towards Filey Brigg



Plate 13 The 1969 self-catering chalets in the south-east camp, with wider spacing between, looking west. This is the area of *Warren Hill*, and features identified from the 1940 aerial survey



Plate 14 Example of two-storey self-catering chalets in the south-east camp, constructed on *Warren Hill* in 1969, looking north-west



Plate 15 Excavated services in the south-east camp, showing what appears to be a considerable depth of made ground beneath the tarmac, although this could represent packing around the original service trench



Plate 16 East-west artificial embankment leading between the original south-east camp (left) and 1969 chalets (right) towards the sports ground and undeveloped field in the distance, looking north. The unsurfaced track is reached by steps leading from the main track skirting the southern edge of the camp (foreground)



Plate 17 Surfaced east-west roadway between the south-east (right) and south-west (left) camps, looking north towards the sports field (right) and putting green (behind the tree line, left).

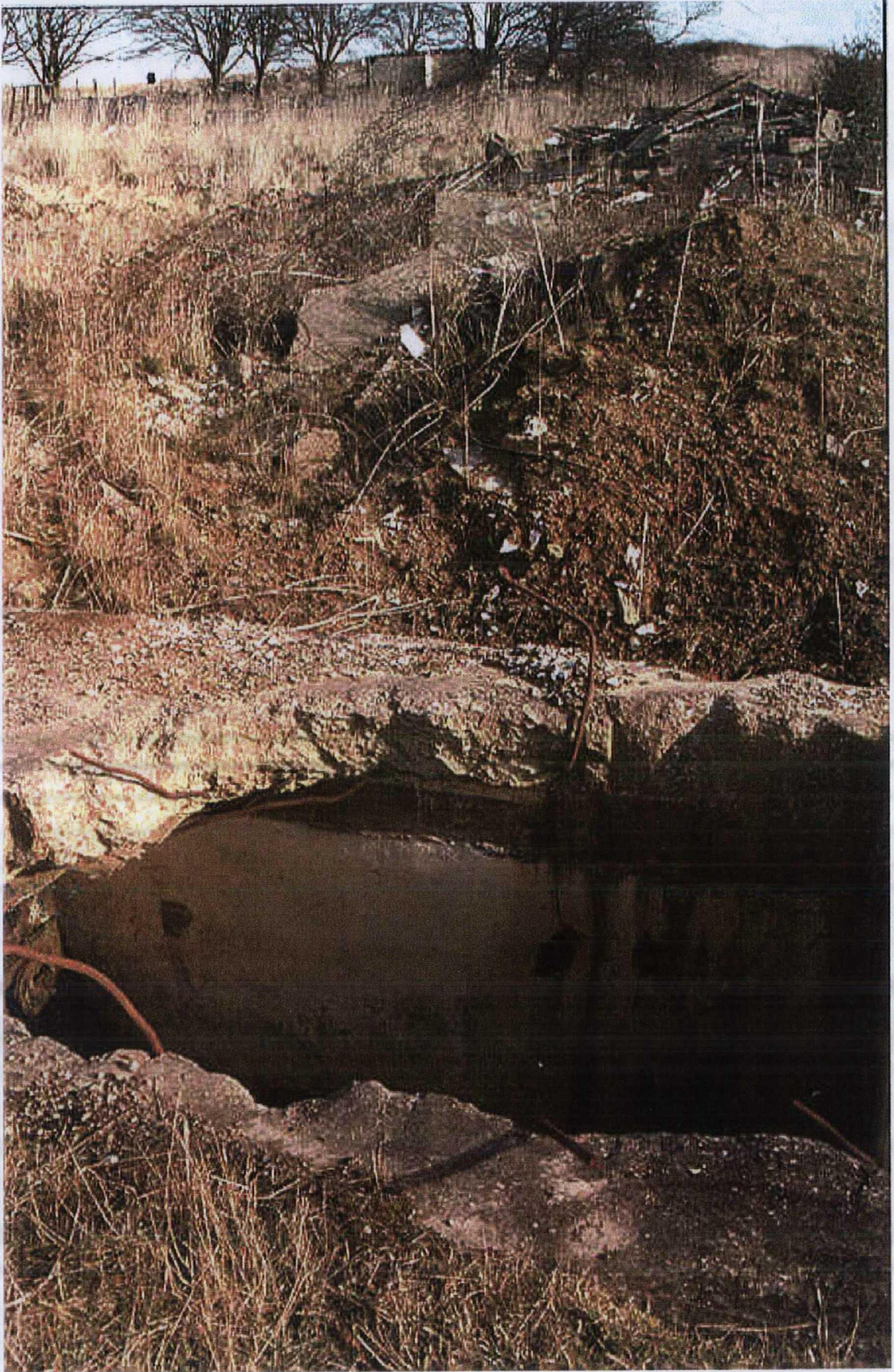


Plate 18 Detail of partly excavated services near the south-west camp

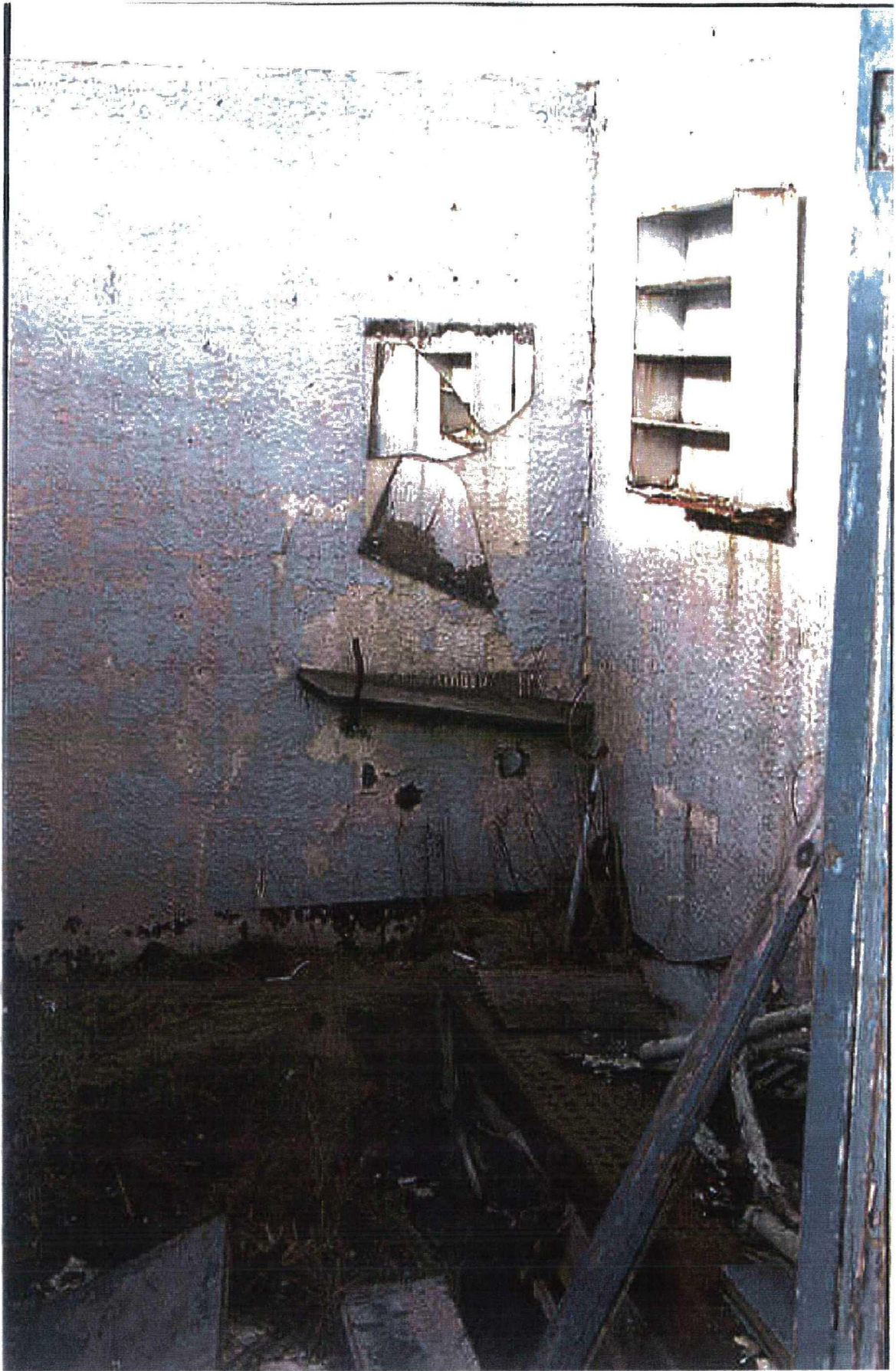


Plate 19 Detail of typical staff chalet interior, still containing most original fittings, although roofless



Plate 20 Thick rubble dumping east of the staff chalets (left), looking north. Below the rubble platform is the original hedgerow for the ploughed field behind Moor Farm (right)



Plate 21 East-west roadway between the main entertainment blocks, looking north



Plate 22 The outdoor swimming pool, looking north. The twin fountains were part of the original filtration system. The reinforced standing shell of the 1953 indoor swimming pool can be seen to the right



Plate 23 Rooftop view of the swimming pool and indoor pool during the 1950s heyday of the camp, looking north, with the Empire Theatre in the background. The boating lake is behind the roadway and tree line to the left (John Hinde Studios, Dublin)