

PROCEEDINGS

OF THE

Cambridge Antiquarian Society.

OCTOBER 20, 1890, TO MAY 27, 1891,

WITH

Communications

MADE TO THE SOCIETY.

No. XXXIII.

BEING No. 3 OF THE SEVENTH VOLUME.



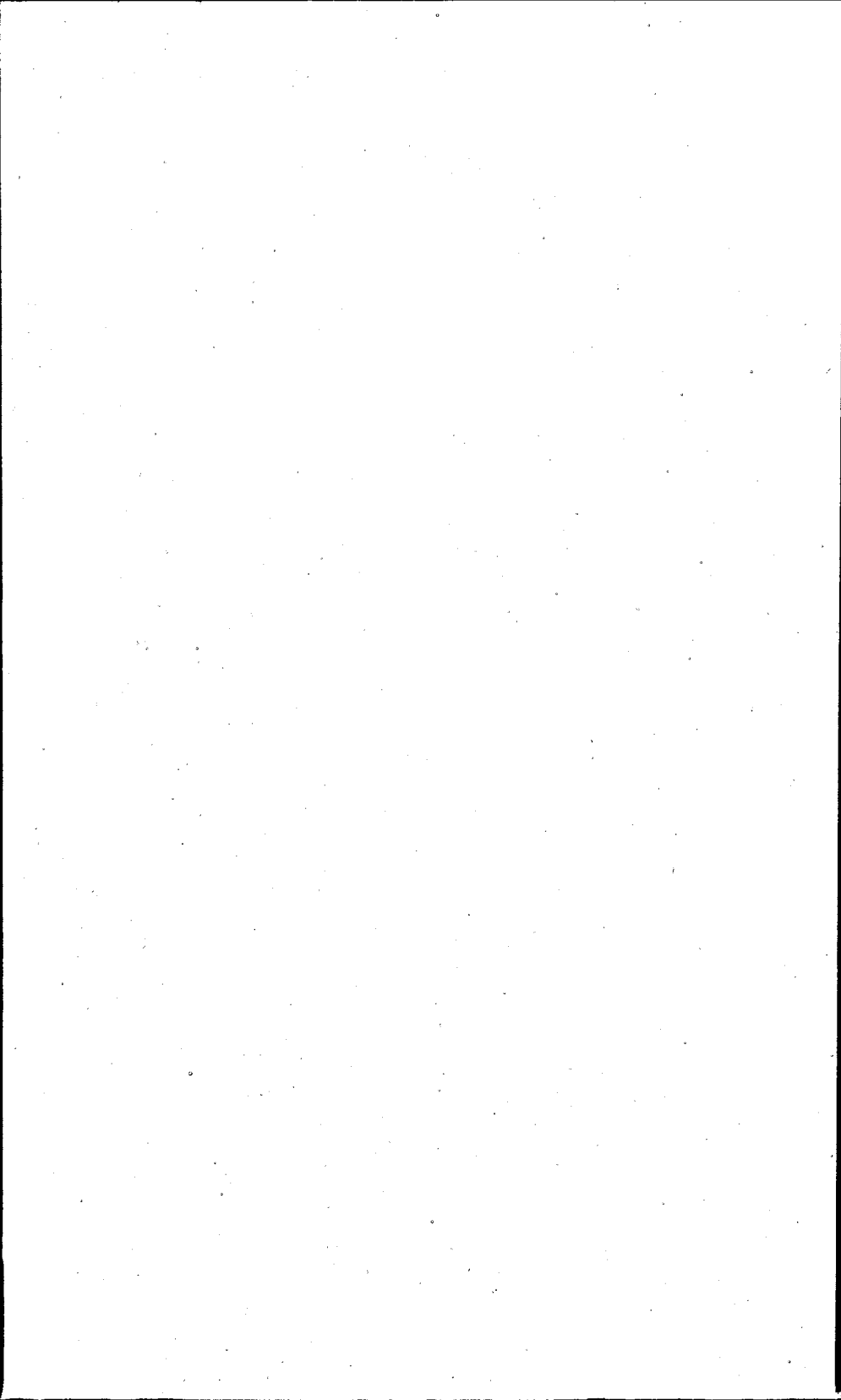
Cambridge:

DEIGHTON BELL & CO.; MACMILLAN & BOWES.

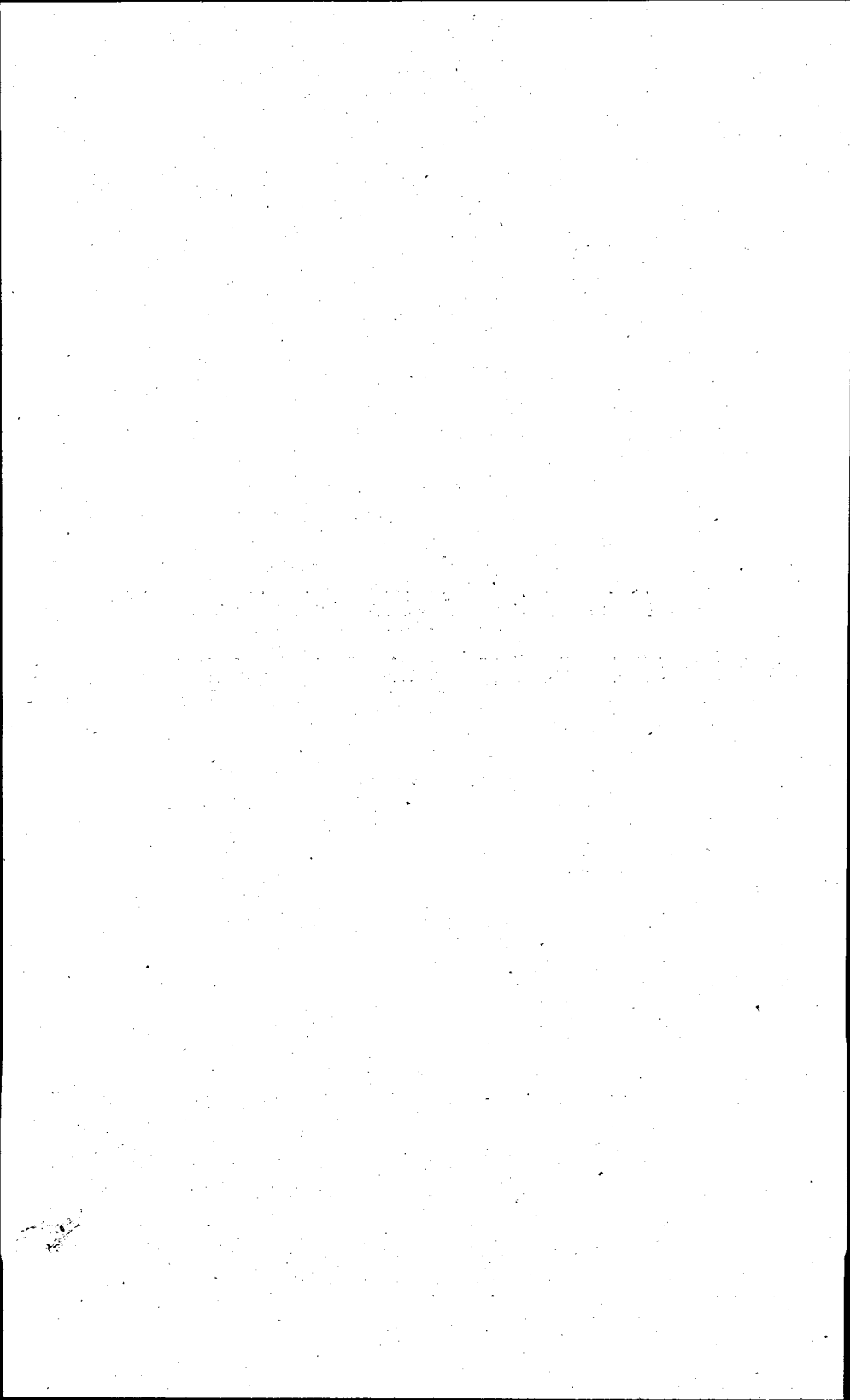
LONDON: G. BELL AND SONS,

1892.

Price 7s. 6d.



CAMBRIDGE ANTIQUARIAN
PROCEEDINGS AND COMMUNICATIONS.



PROCEEDINGS
OF THE
Cambridge Antiquarian Society,
WITH
COMMUNICATIONS
MADE TO THE SOCIETY.

VOL. VII.



NEW SERIES.

VOL. I.

1888—1891.

CAMBRIDGE:

PRINTED FOR THE CAMBRIDGE ANTIQUARIAN SOCIETY.

SOLD BY DEIGHTON, BELL & CO.; AND MACMILLAN & BOWES.
LONDON, GEORGE BELL AND SONS.

1893.

Cambridge:

PRINTED BY C. J. CLAY, M.A. AND SONS,

AT THE UNIVERSITY PRESS.

CONTENTS.

1888—1889.

	PAGE
Exhibition of Roman Pottery found near the Madingley Road. By Professor MACALISTER	1
On a skeleton of a Stag (<i>Cervus elaphus</i>) from Manea Fen. By J. W. CLARK, M.A.	2
On the University of Stamford. By E. G. DE SALIS WOOD, B.D.	2
On an Egyptian <i>Stele</i> . By Professor MACALISTER	3
Notes on an altar-cloth from Lyng Church, Norfolk. By Professor MIDDLETON	4
On an early Christian Inscription at Mertola, Portugal. By H. GADOW, M.A.	7
Exhibition of a medal of Queen Anne, dated 1704. By Miss JODRELL	9
Notes on two Chasubles from Sawston Hall. By Professor MIDDLETON	10
Exhibition of a bronze figure. By Professor HUGHES	13
Exhibition of a sheet of Hamond's plan of Cambridge, 1592. By J. W. CLARK, M.A.	13
Notes on some recent discoveries in Linton Church. By W. M. FAWCETT, M.A.	15
On a collection of Egyptian skulls of the xvith dynasty. By Professor MACALISTER	17
On a MS. copy of the <i>Scala</i> of Johannes Climacus. By F. J. H. JENKINSON, M.A.	"
On certain sculptured stones. By Professor BROWNE	"
Exhibition of the Will of General Arnold. By F. C. WACE, M.A.	18
On the stone of Jællinge. By E. MAGNÚSSON, M.A.	"
On antiquities found near Hauxton. By Professor HUGHES	24
On three choir-stalls from Brampton Church, Hunts. By Professor MIDDLETON	28
On Fine Art as applied to the illustration of the Bible, Sec. ix—xiv, exemplified chiefly by Cambridge MSS. By M. R. JAMES, M.A.	31
Annual Report (No. XLIX) for 1888—89	70

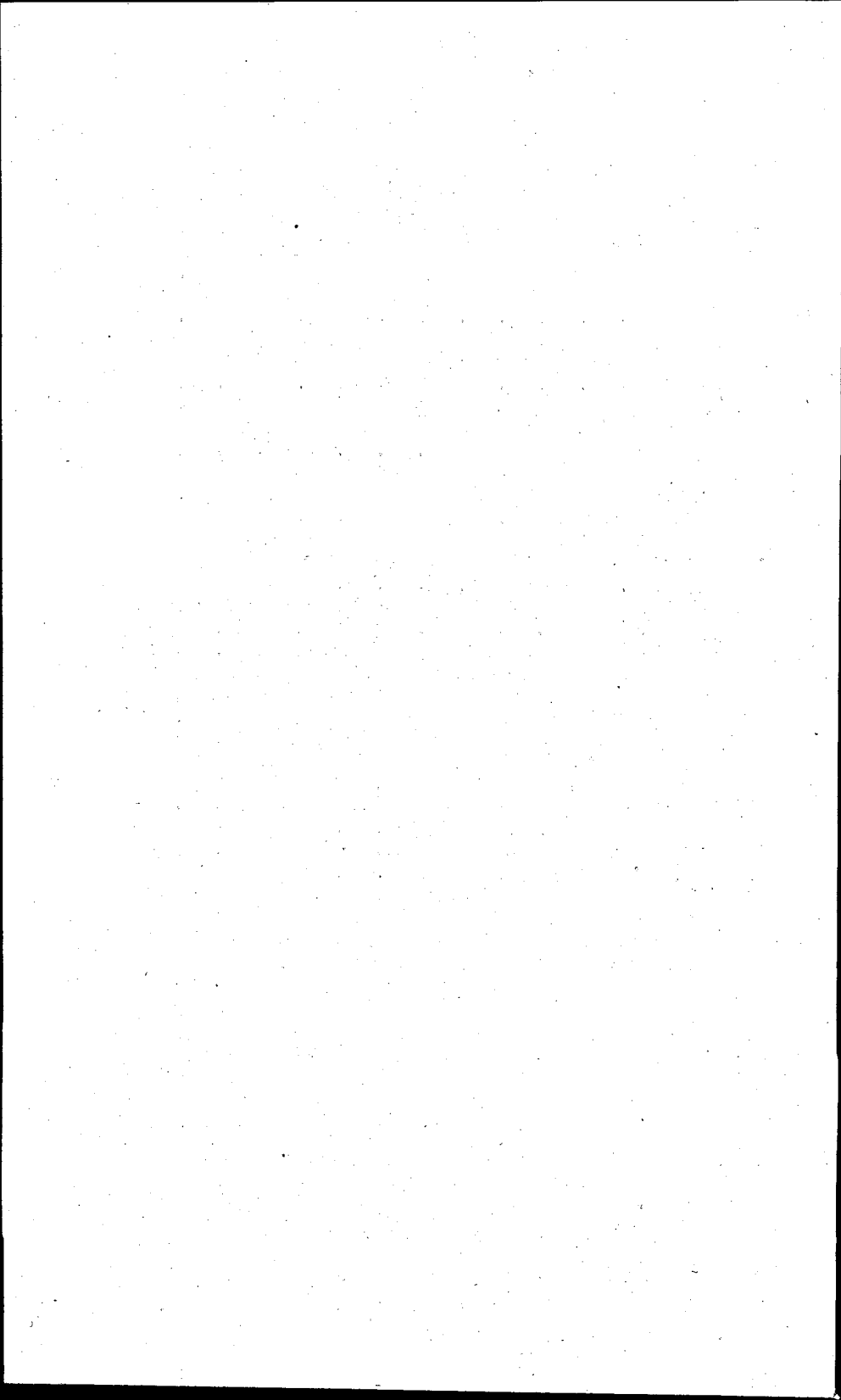
	PAGE
On a blue-glazed Oenochoe of Ptolemaic manufacture	72
List of presents, 1888—89	77
Treasurer's Report	82
List of the Council, 27 May, 1889	83

1889—1890.

On a sculptured stone with a Runic Inscription from Cheshire. By Professor BROWNE	86
On a sculptured stone with an Ogam Inscription. By the same	88
On the old altar-slab of S. Benedict's Church, Cambridge. By the same	89
On the house of the Veysy family in Cambridge. By Mr T. D. ATKINSON	93
On a book printed at Cambridge by John Siberch. By F. J. H. JENKINSON, M.A.	104
On fragments of alabaster retables from Milton and Whittlesford. By Professor MIDDLETON	106
On the Great Fen Road, and its path to the sea. By Mr E. M. BELOE	112
Exhibition of Bronze Ring-Dials: with remarks by Professor ADAMS	131
Exhibition of sundry objects by Professor and Mrs HUGHES	"
On the purchase of the manor and advowson of Mepal in the xvth century by the Prior and Convent of Ely. By Archdeacon CHAPMAN	"
On the Syriac and Coptic versions of the martyrdom of S. George of Cappadocia. By E. A. T. W. BUDGE, M.A.	133
On Shengay and its Preceptory. By Rev. W. H. SHIMIELD	136
Notes on the Cultus of S. George of Cappadocia. By E. G. DE SALIS WOOD, B.D.	"
Exhibition of a collection of British coins. By Mr F. LATCHMORE	152
On the formation of the ancient Diocese of Ely. By E. G. DE SALIS WOOD, B.D.; and Rev. E. VENABLES, M.A.	157
Annual Report (No. 1) for 1889—90	168
On a sixteenth century Cullen ware jug. By Professor MIDDLETON	169
On a Christian engraved gem in the Lewis Collection. By the same	171
On the parish registers of Abington Pigotts. By Rev. W. G. F. PIGOTT, M.A.	175
On a Roman refuse-pit in Alderney. By Baron A. VON HÜGEL, M.A.	"
List of presents, 1889—90	176
Treasurer's Report	182
List of the Council, 19 May, 1890	183

1890—1891.

	PAGE
On stakes and pottery from Loch Maree. By Professor HUGHES	185
On Roman antiquities found at Newton. By Mr HURRELL	,,
On a letter from P. Kaetz to J. Siberch. By F. J. H. JENKINSON, M.A.	186
Notes on the history of the parish of Tadlow. By Rev. H. W. STEVENS, M.A.	189
On coins and other objects found in Peterborough. By Mr J. W. BODGER	,,
On a hitherto unknown book printed by John Lettou. By Mr E. GORDON DUFF	190
On a signet-ring of the 15th century. By Professor MIDDLETON	193
On the canopy carried over Queen Elizabeth when she visited Cambridge in 1564. By J. W. CLARK, M.A.	194
On a bird's-eye view of Clare Hall, taken in 1714. By the same	197
Are the Cambridgeshire ditches referred to by Tacitus (Annals XII. 31)? By W. RIDGEWAY, M.A.	200
On the date of Ingulf's History of Croyland Abbey. By Rev. W. G. SEARLE	207
Notes on the architectural history of Horham Hall, Essex. By Mr T. D. ATRINSON	210
An attempt to trace the architectural history of Barnwell Priory. By J. W. CLARK, M.A.	222
Exhibition of a bronze medal, dated 1794. By Mr RHODES	252
On some antiquities found at Great Thurlow. By Professor HUGHES	,,
Letters of Wren and Hawksmoor on a proposed new bridge at S. John's College, 1697—98. By R. F. SCOTT, M.A.	254
Letters concerning the controversy between S. John's College and Trinity College on the enclosure of Garret Hostel Green and Trinity College Walks, 1599—1600. By the same	261
Speeches commemorative of Rev. S. S. LEWIS, Secretary	286
On Sakit Canoes. By S. J. HICKSON, M.A.	289
Annual Report (No. LI) for 1890—91	295
Address by the President, Professor HUGHES	296
Exhibition of antiquities found near Newmarket, and presented to the Museum by Mr A. C. WRIGHT	307
List of presents	308
Treasurer's Report	314
List of the Council	315



LIST OF ILLUSTRATIONS.

NOTES ON LINTON CHURCH, CAMBS.

- | | | |
|----------|---|---------------|
| Plate I. | Transverse section of Linton Church, Cambs. } | |
| — II. | Longitudinal " " " " } | To face p. 16 |

ON THE STONE OF JELLINGE.

- | | | |
|--------|--|---------|
| — III. | View of two sides of the stone | " p. 18 |
|--------|--|---------|

ON ANTIQUITIES FOUND NEAR HAUXTON, CAMBS.

- | | | |
|-------|--------------------------------------|---------|
| — IV. | Two millstones | " p. 25 |
| — V. | Three specimens of pottery | " p. 26 |
| — VI. | Group of iron objects | " p. 27 |

ON THREE CHOIR-STALLS FROM BRAMPTON, HUNTS.

- | | | |
|--------|---------------------------------------|---------|
| — VII. | Carvings on the misericords | " p. 30 |
|--------|---------------------------------------|---------|

ON FINE ART APPLIED TO THE ILLUSTRATION OF THE BIBLE.

- | | | |
|---------|--|---------|
| — VIII. | Fig. 1. Vision of Ezechieh; from Bible in Corpus Christi Coll. Library. Fig. 2. A Trial; initial letter to the Wisdom of Solomon; <i>ibid.</i> | " p. 34 |
| — IX. | S. Luke; from the Gregorian Gospels; <i>ibid.</i> | " p. 46 |
| — X. | Fig. 1. The Sacrifice of Isaac; from a MS of the Psychomachia of Prudentius; <i>ibid.</i> Fig. 2. Abraham and Melchisedek, from the same MS | " p. 56 |
| — XI. | Fig. 1. Lot carried into captivity. Fig. 2. Abraham and the three Angels. From the same MS | " p. 56 |
| — XII. | A page from the Biblia Pauperum; from Corpus Christi Coll. Library | " p. 58 |

ON AN OENOCHOE.	
Plate XIII. A blue-glazed Oenochoe of Ptolemaic manufacture	To face p. 72

ON THE ALTAR-SLAB OF S. BENEDICT'S CHURCH, CAMBRIDGE.

Fig. 1. The Altar-slab	p. 89
— 2. One of the crosses on the slab	p. 90

ON THE HOUSE OF THE VEYSY FAMILY IN CAMBRIDGE.

Plate XIV. Cellar plan, and section on line BB.	To face p. 100
— XV. Ground-floor plan	" p. 100
— XVI. First-floor plan	" p. 100
— XVII. Outside elevation of north wall	" p. 100
— XVIII. Section on AA.	" p. 100
— XIX. Details of windows, chimneys, etc.	" p. 100
— XX. " internal woodwork	" p. 100
— XXI. Elevation and details of west fire-place, Room C	" p. 100
— XXII. Part of the same fire-place, on larger scale	" p. 100
— XXIII. Elevation and details of east fire-place, Room C	" p. 100
— XXIV. " " fire-place, Room G	" p. 100
— XXV. Carvings on above fire-place	" p. 100

THE GREAT FEN ROAD.

— XXVI. Sketch plan, shewing the path of the Road	" p. 116
— XXVII. Plan to shew the position of the sections given on Pl. XXVIII.	" p. 116
— XXVIII. Sections of the Road	" p. 116
— XXIX. Roman pottery found at Eldernell	" p. 116

ON ALABASTER RETABLES FROM MILTON AND WHITTLESFORD.

— XXX. } Fragments of the retable from Whittles-	
— XXXI. } ford Church: for description see p. 110	" p. 110
— XXXII. }	
— XXXIII. }	

SHENGAY AND ITS PRECEPTORY.

Fig. 1. Rough plan of Shengay and its neighbourhood	p. 136
— 2. Site of Preceptory	p. 137
— 3. Gravestone of Robert Dalison	p. 140
— 4. Reduced copy of Cole's sketch of Shengay Chapel	p. 145

ON AN ENGRAVED GEM IN THE LEWIS COLLECTION.

— 1. The Good Shepherd, from a gem	p. 173
--	--------

ON A VIEW OF CLARE HALL, DATED 1714.

- Plate XXXIV. Bird's eye view of Clare Hall To follow p. 196
 Fig. 1. Hamond's plan of Clare Hall, dated 1592 p. 199

ARE THE CAMBRIDGESHIRE DITCHES REFERRED TO BY TACITUS?

- Plate XXXV. Map of the county described To face p. 200

NOTES ON HORHAM HALL, ESSEX.

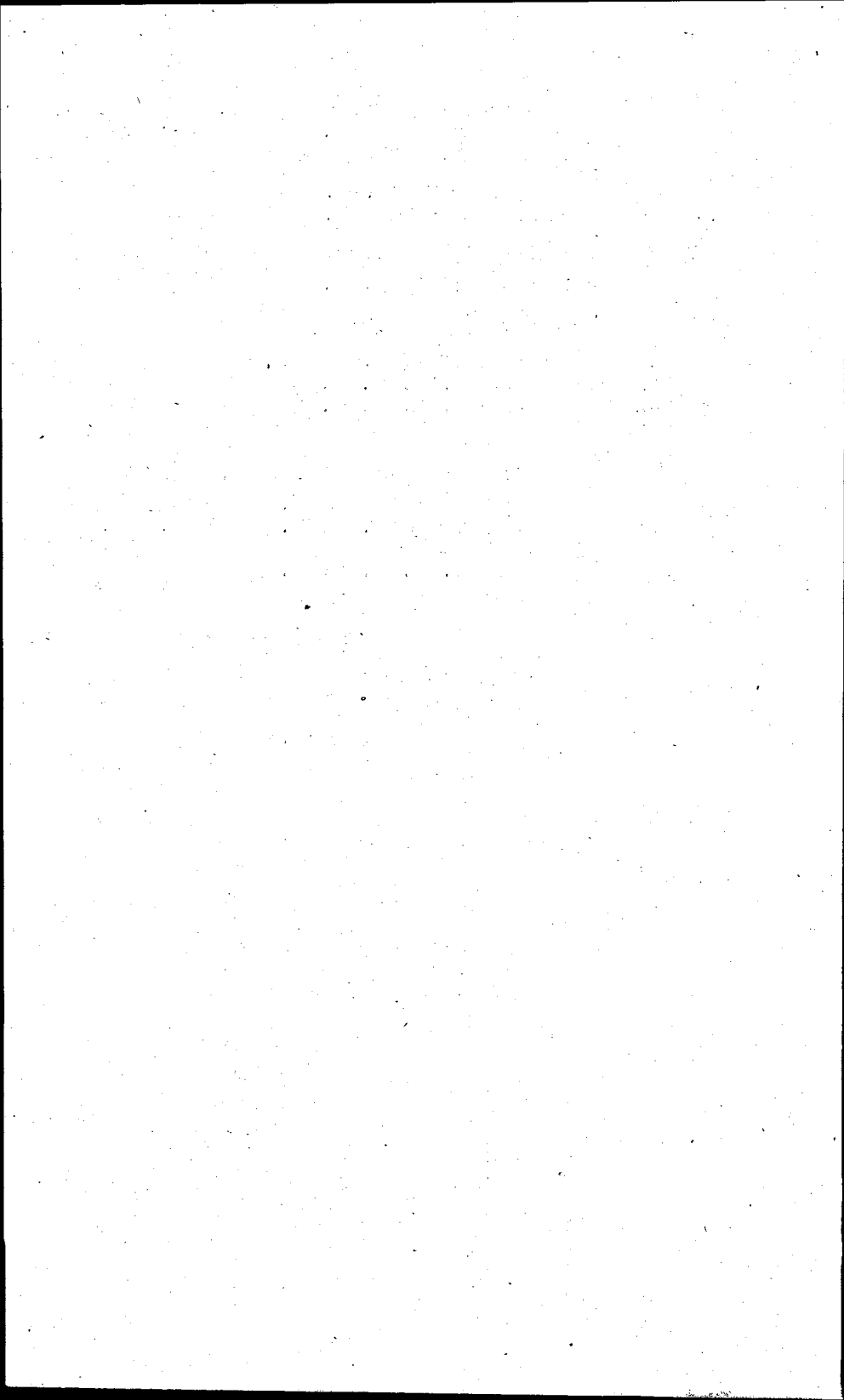
- XXXVI. Ground-plan of the Hall p. 212
 — XXXVII. Plan of the Roof p. 214
 — XXXVIII. Details of the same p. 215
 For description of these plates see pp. 220, 221.

ON THE ARCHITECTURAL HISTORY OF BARNWELL PRIORY.

- XXXIX. Ground-plan of existing remains p. 238
 — XL. Elevation of portions of the same p. 239
 — XLI. Ground-plan of the site, with suggested arrangement of the buildings p. 248

ON PROPOSED BRIDGE AT S. JOHN'S COLLEGE.

- XLII. Plan by Nicholas Hawksmoor for S. John's College Bridge, 1698 p. 255



MONDAY, *March 2nd*, 1891.

Professor BABINGTON, M.A., in the chair.

MR RHODES exhibited—and kindly presented to the Society—a small bronze medal, found last month in his garden, bearing on the obverse the legend

ERSKINE · AND · GIBBS · AND · TRIAL · BY · JURY

and on the reverse the names of Hardy, Horne Tooke, Thelwall, and the others who were tried for high treason, with the date, 1794. Sir Vicary Gibbs was elected Member for this University in 1807. He and Erskine defended the prisoners.

PROFESSOR HUGHES, in exhibiting some antiquities lately found at Great Thurlow, first gave a sketch of the line of country at the base of the Chalk Hills by Haverhill, Bartlow, and Linton, along which Roman remains were not uncommon. He shewed that the Romans had followed the valley from Haverhill to Great Thurlow, and probably on by Wood-Ditton to Newmarket, pointing out the exact positions in that valley in which other remains of Neolithic and Roman date had been found.

He owed the acquisition of the interesting collection exhibited to the courtesy and generosity of Mr Wootten of Great Thurlow, who came upon the pit in which they occurred when draining a field, and informed him of the discovery in time to enable him to see the pit open and examine the mode of occurrence of the relics.

The pit was situated on the upper part of the slope near the level of the plateau, north-west of Great Thurlow. The surface of this plateau consisted of boulder-clay with patches of gravel and a clayey wash, especially on the brow of the hill; on the eastern slope, near the top, the pit described was cut across by the drains, and was proved to a depth of some six feet or so. It was filled with earth, layers of broken pottery, bones, shells, and various household refuse, containing a good deal of organic matter.

There was black and grey pottery of well-known, and some of rarer, form and ornamentation; handles of *amphorae*, and necks of earthen flasks, *mortaria*, and so on. But the pit was remarkable for the quantity and variety of the Samian ware found in it. It was not of the best class of paste, being rather soft and porous, but the exterior appearance was very good, and the ornamentation rich: there was the usual loop-and-tassel border, and the beautiful radially marked margin, like the rim of some sea shells.

Some pieces of pottery had symmetrically twined leaves and fruit, which might be mulberry or alder; on another was a leopard, easily recognised by its slim form and spots. The potter's marks were generally obscure, as if the stamps had been worn and broken—OF ALBI was the only one which he could read, and the L of that was doubtful.

There were many large rusty nails, probably from the wood of which charred remains occurred all through the mass. Oyster-shells were common, and also bones of pig, sheep, red deer, and a small short-horned ox.

There were pieces of Niedermendig lava, of which millstones were so commonly made then as now; a plain bronze *fibula* and bits of wire, a bronze triangular embossed ornament, such as might have formed part of a short sword-scabbard, and a small brass coin on which 'Claudius Caes' were the only legible letters. The most interesting object, however, was a small stumpy figure, draped in long straight-falling robes, and holding a long knife in one hand and a bag or purse in the other. It was carved in chalk and stood about three inches high, but the head was unfortunately lost (probably a Vertumnus-Mercury).

He saw evidence of at least two more similar pits a little lower down the hill.

On making enquiries as to whether there were traces of a camp or villa known anywhere near, or suggested by local names, he could hear of none except that the small channel which ran down the hill side close by was known as 'Castle ditch.'

CONTENTS

OF PROCEEDINGS, No. XXXIII.

VOL. VII. No. III.

	PAGE.
On a letter from P. Kaetz to J. Siborch. By F. J. H. JENKINSON, M.A.	186
On a hitherto unknown book printed by John Lettou. By Mr E. GORDON DUFF	190
On a canopy carried over Queen Elizabeth on her visit to the University, 1564. By J. W. CLARK, M.A.	194
On a bird's-eye view of Clare Hall, 1714. By the same	197
Are the Cambridgeshire Ditches referred to by Tacitus? By W. RIDGEWAY, M.A.	200
On the origin and date of Ingulf's History of Croyland Abbey. By Rev. W. G. SEARLE, M.A.	207
Notes on the architectural history of Horham Hall, Essex. By Mr T. D. ATKINSON	210
On the architectural history of Barnwell Priory. By J. W. CLARK, M.A.	222
On some antiquities found at Great Thurlow. By Professor HUGHES	252
Letters of Wren and Hawksmoor on a proposed bridge at S. John's College. By R. F. SCOTT, M.A.	254
Letters on the enclosure of Trinity College Walks and Garrett Hostel Green. By the same	261
Comments on the loss of Rev. S. S. Lewis (Secretary)	286
On Sakit Canoes	289
Annual Report (presented 27 May, 1891).	295
Address by Professor HUGHES, President	296
List of Presents	308
Treasurer's Report	314