

ART. XII.—*Brasses in the Diocese of Carlisle.* By the Rev. R. BOWER, M.A., Vicar of St. Cuthbert's, Carlisle.

Read at Appleby, July 4, 1893.

THE monumental brasses of the Diocese of Carlisle having figures of some kind upon them and not mere inscriptions are fourteen in number. There are memorials to two Bishops (Bell and Robinson), one doctor of law (Dr. Whelpdale), two priests (Ouds and Blythe), the latter a palimpsest, five knights, three civilians, five ladies. Ten are in Cumberland, two in Westmorland, and one in Lancashire. At Edenhall, Crosthwaite, and Ulverston husband and wife are engraved side by side. The accompanying plates have been produced by lithography from rubbings made by the writer of the paper or by various clergymen and other friends, to whom he would now publicly give his grateful thanks. The order of the descriptions of the plates has been suggested by a book on Monumental Brasses, written by the Rev. H. W. Macklin, whose work has been freely quoted in the paper and whom the writer also thanks for very much kind help. The inscriptions on the brasses in memory of William Stapleton and John Whelpdale are printed in full.

PLATE I.—A.D. 1458.

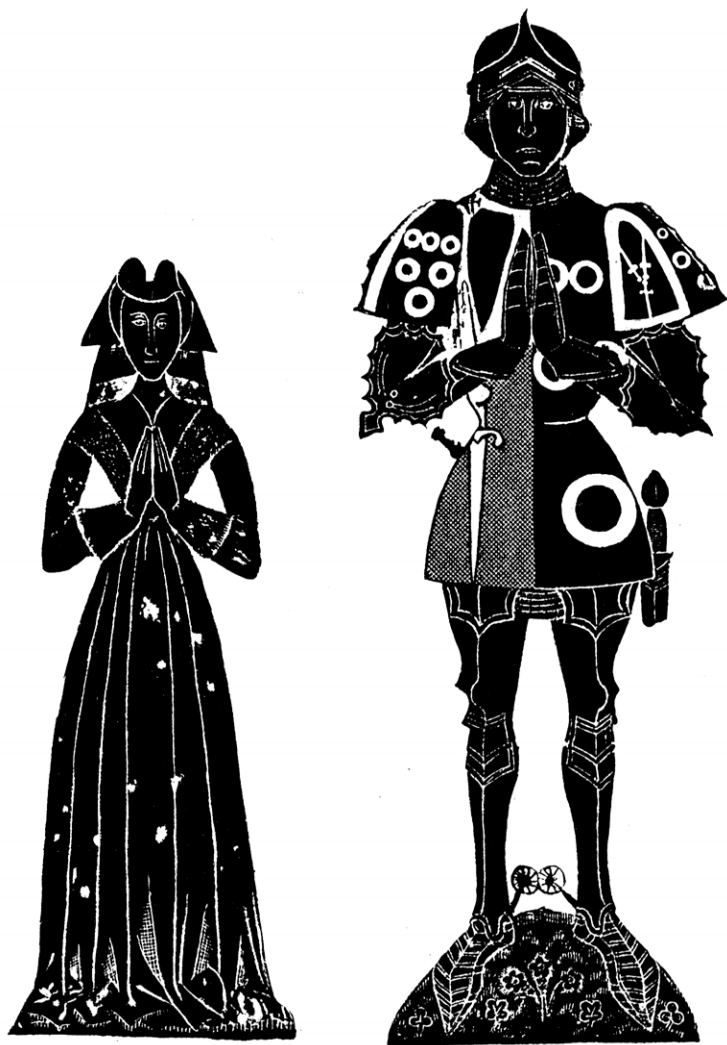
WILLIAM STAPLETON, Esq., AND HIS WIFE MARGARET,
EDENHALL, CUMBERLAND.

Position.—In the floor of chancel.

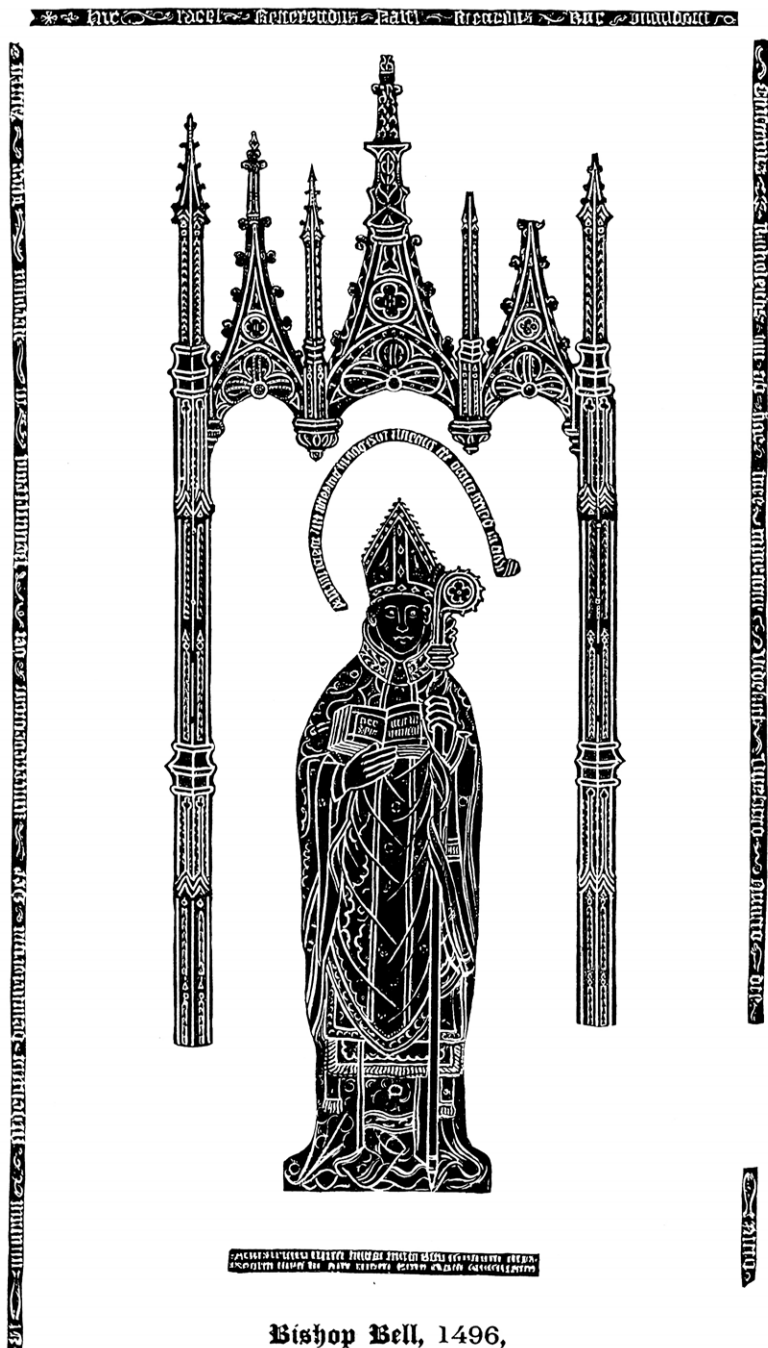
Component Parts.—Two figures; length of male 36 in., of female 27½ in. A black letter inscription of three lines.

Description.—A man in full armour with a slightly pointed helmet, a gorget or collar of mail, fluted coudières with scalloped edges. A skirt of mail with tuilles is seen below the tabard, which is charged on the body and on the sleeves with the armorial bearings of the

Sic ranc Villains Stapleton Augur quod dñs de Edenhall qui obiit xxviii die
 Augusti a dñi m̃i 1455 fuit et Margareta uxor eius que fuit filia et uxor
 quod dñs Nicholau de luti pout et dñs de Alderston aior Quor aialo minat deus



William Stapleton and Wife, 1458,
 Edenhall, Cumberland.



Bishop Bell, 1496,
Carlisle Cathedral, Cumberland.

families of Stapleton (dexter side) and Veteripont (sinister). At the knees are genouillieres small and plain, while the feet are covered with sollerets (sharp toed). The long sword is broken and the hilt of the dagger seen on the dexter side.

His wife's robe is plain, but the head dress is that called "*horned*," a development of the "*crespine*." "In the latter the hair is fastened in a net, often jewelled, on the top of the head with a bunch or knob, also netted above each ear. The whole coiffure is kept in position by a jewelled band or fillet, and partially covered with a light veil, which hangs down the shoulders. Gradually the side nets increased to a very large size, so as to form a pair of stiff horns."—Macklin, p. 73.

Inscription.—

Hic Jacet Willielmus Stapiltonus Armiger quondam dominus de Edenhall qui obiit XXVI^o die | Augusti Anno Domini M^oCCCC^oLVIII^o et Margareta uxor ejus que erat filia et heres | quondam Nicholaii de Veteriponte et domina de Aldeston mor Quorum animabus propicietur deus.

PLATE II.—A.D. 1496.

BISHOP RICHARD BELL, CARLISLE CATHEDRAL.

Position.—In the centre of the floor of the choir.

Component Parts.—Figure (4 ft. 8½ in. long), under triple rich Gothic canopy (9 ft. 5 in. long). A marginal fillet of brass with black letter inscription. Plate with four line inscription below figure.

A bishop in full eucharistic vestments with amice, alb, stole, maniple, chasuble, tunicle and dalmatic, which both reach to the knee. The tunicle richly embroidered and fringed is rather longer than the dalmatic. The stole is beneath the dalmatic and tunicle.

Other episcopal insignia are seen in the mitre, gloves, and pastoral staff. The left hand holds the staff and the right a book with this inscription, "*Hæc spes mea in sinu meo.*" A scroll at the head says: "*Credo quod redemptor meus vivit, &c.,*" under his feet, a tablet with four hexameters.

Hac Marmor Fossa Bell præsulis en tenet ossa.
Duresme dudum prior hic post pontificatum
Gessit sed reunit, Christum super omnia querit
Despiciens mundum, poscendo premia fratrum.

On

On the marginal fillet are the words :

Hic jacet Reverendus Pater Ricardus Bell quondam Episcopus
Karliolensis qui ab hac luce migravit videlicet vicesimo quarto die.
. . . . Anno Domini

omnium fidelium defunctorum per misericordiam dei requiescant
in perpetua pace. Amen.

PLATE III.—A.D. 1500.

THOMAS OUDS, PRIEST, GREAT MUSGRAVE,
WESTMORLAND.

Position.—On the south side of the floor of the chancel.

Component Parts.—A figure $13\frac{1}{2}$ in. long, and two medallions. The higher 1 ft. 9 in. above the figure; the lower 2 ft. 6 in.

A priest in eucharistic garments, viz., amice, alb, stole, maniple, and chasuble. Around the breast are the words: "Reposita est hæc spes mea in sinu meo." The medallions have emblems of St. Matthew and St. Mark. Nicolson and Burn say: "In four roundels, one at every corner an angel with the label Mercy Jesu". Bishop Nicolson, in his Visitation Notes, says: "There is at foot the following epitaph. Orate pro Aia Mri. Thomæ Ouds quondam Rector Dnorum epi et archidiaconi Carliol Official qui obiit XXII. . . ."

This has now disappeared.

PLATE IV.—A.D. 1551.

RICHARD NEWPORT, GREYSTOKE, CUMBERLAND.

Position.—On the floor of the south aisle.

Component Parts.—One figure ($11\frac{1}{4}$ in. long) with black letter inscription of four lines, upside down on the plate, but legible to the person kneeling on the figure and looking eastwards.

Description.—A civilian with long hair, and dressed in a long fur-lined gown, open in front and turned back, so as to show the fur from the neck to the feet.

Inscription.—Of your charite pray for the soule of Rychard | Newport that was buried under thys Stone | and Deptyd the vij day of August in the yere of | our Lorde God MCCCCCLI. whose soule

Jhu pdon.

PLATE IV.



Thomas Ouds, 15th Century,
Great Mausgrave, Westmorland.



Sir John Ratclif and Wife, 1547,
 Crossthwaite, Cumberland.

PLATE IV.—A.D. 1526.

JOHN WHELPDALE, GREYSTOKE, CUMBERLAND.

Position.—Figure $6\frac{3}{4}$ in. long, on the floor of the south aisle.*

Component Parts.—Half length figure ($6\frac{3}{4}$ in.), four line inscription, and two coats of arms.

Description.—Half length figure of a doctor of laws, clad in a fur tippet with long pendants (very like an almuze) over the gown. To the sinister and dexter of inscription are the arms of De Whelpdale, Arg. 3 greyhounds, current in pale, gules collared, or.

Inscription.—

Orate pro anima Johannis whelp | dall legum doctoris, magistri Collegii | de graystok, et rectoris de caldebek | qui Obiit viii^o iulii anno domini 1526.

PLATE V.—A.D. 1527.

SIR JOHN RATCLIFF AND DAME ALICE HIS WIFE,
CROSTHWAITE, CUMBERLAND.

Position.—South aisle, near east end.

Component Parts.—Two figures each about $23\frac{1}{4}$ in. in height), a black letter inscription of three lines and four coats of arms.

Description.—The knight is represented in a complete armour of plate. A gorget and cuirass cover the throat and body. Rerebraces and vambraces, with pauldrons and coudières, encase the arms, shoulders, and elbows, while taces with dependent tuilles cover the skirt of mail beneath. The shins are protected by jambs, the thighs by cuisses, and the knees by genouillières, while on the feet we find broad toed sabbatons. A strong, straight, cross-handled sword hangs behind the figure in a sloping condition, and the small misericorde or dagger on the right is slung in the opposite direction. The head is bare, and the hair flows in tresses behind. Round the gorget is a chain with a *tau* cross hanging from it, resting upon the cuirass.

The lady is Dame Alice, daughter to Sir Edmund Sutton de Dudley, Lord of Dudley in Warwickshire, by Maud, his second wife, daughter to Thomas Lord Clifford of Westmorland. On the head is the pedimental head dress worn by females in the time of Henry VII. and Henry VIII. It is very stiff and entirely hides

* "On the east side of the south transept under the floor of a seat used by the Castle servants," says the late Rev. Thomas Lees.

the

the hair. Frontlets of velvet, elaborately embroidered, meet over the forehead, making a sharp and decided angle. These hang down in lappets on either side of the head. A high close-bodied gown falls in long ample folds from the waist, where it is secured by a girdle clasped in front with an ornament composed of three roses or quatre-foils, from which suspended by a chain reaching almost to the ground is another ornament of a globular form, intended to contain a pomander or other perfume.

An under garment, with embroidered collar, is seen at the throat and at the wrists. A chain, with a *tau* cross similar to Sir John's, is round the neck, and both figures have the hands in an attitude of prayer.

Above the head of the knight is a shield charged with :—Argent, a bend engrailed, sable, the bearing of the Ratcliffes; and at his fee another :—Or, two lioncels passant, azure, the arms of the Suttons de Dudley.

Over the lady is her shield and below that of the Ratcliffes, with the additional charge of a rose or cinquefoil in the sinister chief (a due reference to the younger house from which he sprung).*

Inscription.—

Of yo^r Charite pray for the Soule of S^r John Ratclif knight
& for the state of Dame Alice his Wyfe which S^r John dyed ye
ii day of february an di m.d.xxvii O whoos Soule Jhu have mecy.

PLATE VI.—A.D. 1547.

SIR HUGH ASKEW, KNIGHT, BOOTLE, CUMBERLAND.

Position.—On an oak board on the south side of the chancel; size of figure, 16 in. high.

Component Parts.—A knight and black letter inscription of four lines.

Description.—Sir Hugh is in full armour. The pauldrons and genouillières may specially be noticed. Also skirt of mail and lamboys.† The hair is cut short, and the head rests on a helmet.

* NOTE BY THE EDITOR.—The head of the knight, and the four coats of arms are a restoration of, probably, the beginning of the 18th century.—See Proc. S.A., 2nd series, vol. II., p. 191.

† The skirt of taces has now disappeared, and instead appendages called tassets or lamboys are seen, buckled immediately to the cuirass. These are a development of the tuilles but consisted of many plates, of which the lowest were rounded off. Sometimes they reached to the knee plates.—See Kendal brass.

Inscription.



Here lieth F^r Hugh Askew knight late of the seller to
 kinge edward the 6th in which F^r Hugh was maid knight
 at wolkelbrough fild in y^r here of o^r l^ord 1547 and dyed
 y^e second day of marche In the yere of oure l^ord god 1562

Sir Hugh Askew, 1562,
 Bootle, Cumberland.



+ uograd nge amog moyon : hoga : mma q mo
omog : omnia go amoi ai ap : vnde : s alinon
moy : sup : amog ipat : salioq : moyon : pndia : s
apriamag go amog : A iog : vnde : amoi : mma : se :

**Winifrid Newport, 1547,
Greystoke, Cumberland.**



Let no knight put a foot of land to his house and
 the greatest his own soul for his house and

**James Moresby and Wife, 1540,
Grey Stoke, Cumberland.**

Inscription.—Here lyeth Sr Hughe Askew Knight late of the seller to | Kyng Edward the VJ which Sr Hugh was maid knyght | at Moskelbrough felde in y^e yere of o^r Lord 1547 and dyed | y^e second day of Marche In the yere of oure Lord God 1562.

PLATE VII.—A.D. 1547.

WINIFRID NEWPORT, GREYSTOKE, CUMBERLAND.

Position.—In south aisle.

Component Parts.—Female figure ($7\frac{3}{4}$ in.), with black letter inscription of four lines.

Description.—The lady has for a head dress the French bonnet, a close linen cap with a horse-shoe shaped front. The hair down the back shows she was unmarried. The collar of the dress is turned down so as to show the partlet or linen garment drawn together round the neck. The sleeves are puffed at the shoulders.

Inscription (upside down).—Of your charite pray for y^e soule of Wenefride | Newport whose bones lyeth under this stone | whiche deptyd the IX daye of Decemb^r Anno | dni MCCCCXLVIJ whose soule Jhu perdon.

PLATE VII.—About 1540.

JAMES MORESBY AND MARGARET HIS WIFE,
GREYSTOKE, CUMBERLAND.

Position.—Now in vestry. The matrix is in nave, not far from chancel arch.

Component Parts.—Female figure ($13\frac{3}{4}$ in.) and inscription, with black letter inscription of two lines.

Inscription.—

Of yo charite pray for y soules of James Morisby and
Margaret his wyf on whose soules Jhu have mcy ame.

Description.—The lady is attired in the dress of the time of Henry VII. The headgear is of the kind called pedimental, *ante* pp. 145, 146. The dress has tight sleeves, with fur cuffs, and is cut square at the neck. The skirt is trimmed with fur. A large embroidered belt is buckled loosely round the waist, and the end hangs down to the ground.

PLATE VIII.

PLATE VIII.—A.D. 1577.

ALAN BELLINGHAM, KENDAL, WESTMORLAND.

Position.—In Bellingham Chapel N. 1888, but formerly in an adjoining pew.

Component Parts.—Male figure (19½ in.), black letter inscription of nine lines.

Description.—A man in armour, like that of Sir Hugh Askew, Bootle. Tassets reach to the knee plates.

Inscription.—

Here lyeth the bodye of Alan Bellingh'm Esquier,
who maryed Catheryan Daughter of Anthonye
Ducket Esquier by whome he had no children
after whose decease he maryed Dorothe daughter
of Thomas Sanford Esquier of whom he had VII
sonnes & eight daughters of which 5 sonnes and 7
daughters with ye said Dorothe ar yeat lyving. he
was thre score & one yares of age & dyed ye 7 of Maye

A^o dni. 1577. (ABD).*

The following description of the Arms is taken from Mr. Bellasis' book "Monumental Inscriptions of Westmorland".

Arms.—I. : 4 ly, 1 & 4 ar. 3 bugle horns stringed sa (Bellingham); 2 & 3, ar 3 bendlets on canton gu. lion rampant of field, (Burneshead).

II.—The same impaling 4 ly, 1, per chevron sa, and erm, in chief 2 boars' heads coupé or (Sandford); 2. gu. 3 lioncels rampant ar. (English); 3 or, on chevron between 3 mullets pierced az., as many fleurs-de-lis of field (Crackenthorpe); 4. ar, 2 bars on Canton gu, lion rampant or (Lancaster).

Motto.—Ains y l' est.

The first Alan Bellingham of Levens Hall was Deputy Warden of the Marches and Treasurer of Berwick in the reign of Henry VII. This Brass is either in memory of the son or grandson of the first Alan.

PLATE IX.—A.D. 1606.

MYLES DODDING, AND MARGARET, HIS WIFE,
S. MARY'S, ULVERSTON, LANCASHIRE.

Position.—On the south wall, near the east end of the south aisle in the Braddyl Chapel.

* The exact form of this, the engraver's monogram, will be seen on Plate VIII.

Component



Here lieth the bodie of Alan Bellingham Esquier
 who married Catherine daughter of Anthoupe
 Duckett Esquier by Whome he had no Children
 after whose decease he married Dorothe daughter
 of Thomas Sanford Esquier of Whome he had vii
 sonnes & eight daughters of Whom .5. sonnes & .7.
 daughters with y^e said Dorothe in great loving he
 was thre score & one yeres of age & died y^e 7. of cōsoye
 A^dm. 1577 (A.D.)

Alan Bellingham, 1577,
 Kendal. Westmorland.



HERE BEFORE LYETH BVRIED THE BODIES OF MYLES
DODDING ESQ. & MARGARET HIS WIFE WHO DIED IN THE
YEARE OF O^R LORD 1606. AFTER THEY HAD LIVED MARIED.
43 YEARES. & HAD ISSVE TENNE CHILDREN OF WHOME
THERE ONLY SVRVIVED THEM, MYLES DODDING & HENRYE.

*Myles Dodding and Wife,
S. Mary's, Ulverston, Lancashire.*

Palimpsest.



John Blythe lived here some of this shire he by the
 heart of xxxv mers + m deys and departed this .2.
 last the xij day of January in the yere of our lord
 God mccc lxx on which soule thu haue mercy and

John Blythe, 1565,
 Morland, Westmorland.

Also part of Knight and Son on under side.
 Early 16th Century.

Component Parts.—Male and female figures (22 $\frac{3}{4}$ in.). Below is a five-line inscription in Roman capitals.

Description.—A civilian clothed in long gown, almost hiding the doublet and hose except in the sleeves and in front. The cloak has long open ornamental sleeves which sometimes hang nearly to the ground. It may be fur-lined, but the ruff round the neck is somewhat against it. The hair is cut short.

The female figure has the French cap, but considerably depressed, and the black lappet turned over upon it. The skirt of the dress is gathered up at the waist, and stuffed out by a large fartingale (the precursor of the crinoline). The sash has now been given up, and the bodice become a long waisted peaked stomacher.

Inscription.—

Here before lyeth bvried the bodies of Myles
Dodding Esq: & Margaret his wife who died in the
Yeare of o^r Lord 1606. after they had lived Married
43 yeares & had issve tenne children of whome
there only svrvived them, Myles Dodding & Henrye.

PLATE X.—A.D. 1562.

JOHN BLYTHE, VICAR, MORLAND, WESTMORLAND.

Position.—Loose in vestry. Size, 20 $\frac{1}{2}$ in. by 5 $\frac{1}{8}$ in.

Component Parts.—The only palimpsest brass in the diocese. On the one side is a four line black inscription as follows:—

John Blythe lyved here Vycar of this Church by the
space of XXXV. yeres & iiii dayes and Departyd this
lyff the XVI. day of January in the yere of our Lorde
God MCCCCCLXII. on whose soule Jhū. have mey amē.

John Blythe (says Mr. Lees) was vicar in 1538, when the Register commences. This is a fine specimen of post-Reformation use of Prayers for the departed as allowed in Queen Elizabeth's time.

But a more ancient brass has been demolished to provide Blythe with a memorial, for on the other side, cut sharp and clear, is a figure of a knight in full armour, and the shoulders, elbows, and legs of another larger knightly figure; perhaps it was executed in remembrance of a father and son. The inscription below in black letter is

Orate pro an
et Sybille ux.

This is supposed to have been cut forty or fifty years earlier.

PLATE XI.

PLATE XI.—A.D. 1661.

HENRY ROBINSON, BISHOP OF CARLISLE AND
PROVOST OF QUEEN'S COLLEGE.*Position.*—In the north wall of north aisle of Carlisle Cathedral.*Size.*—22½ in. by 16 in.

He was a native of Carlisle, and was consecrated Bishop on July 23rd, 1598. He died at Rose Castle on June 19, 1616, and was buried on the north side of the high altar, where was put over his grave by his brother, the vicar of Crosthwaite, an engraved and gilded brass plate, copied from the original in the chapel of Queen's College, Oxford. He is said to have been "a Pious Christian, Charitable to the Poor, and a great Benefactor to Queen's College. He fell a victim to the Plague which raged with great virulence in Cumberland in the summer of 1616."

PLATE XII.—A.D. 1648.

RICHARD BARWISE, WESTWARD, CUMBERLAND.

Position.—On west wall of church.*Size.*—25 in. by 21 in.

Inscription.—Four lines of Roman capitals. "A memorative epitaph for the excellently | accomplit Gentleman Richard Barwise | late of Ile Kirk Esq^{re}. He dyed the 13 of Febr. | 1648 in the 47th year of his age."

This is followed by ten lines of Roman capitals:—

Belowe good Barwise, Clos'd in bodye lyes,
Whose saintly sovele, Ioyes Crown'd above y^e Skyes
Cyties wise gvide Cowntries cheife Ornament
In grace and natvr's gifts, most eminent
Grave prvdent, piovs stord with vertves best
Exchanginge life for death by death lives blest
Of whome tis sayd none here lived more approved
None dyed more mist, none mist was more beloved
Whose vertvovs wife, in sable thoughts doth movrne
Her tvrtles loss, till layd neere to his vrne.

Beneath this, four lines in Roman small letters:—

Oh pittye great soe choyse a Couple should
without Grand ifsue be reduced to mould,
Nor can they well while here they leaue a name
fhall them furuiue till they reuiue a gaine.

Roman



HENRICO ROBINSONO CARLEOLENSI, SS. THEOL. DOCTORI, COLLEGII REGINÆ,
 OXONIÆ, PRÆPOSITO PROVIDISSIMO. TADEMQ. HVIVS ECCLESIAE. PER ANOS XVIII
 EPISCOPO VIGILANTISSIMO. XIII. CALEND. IVLII AÑO À PARTV VIRGINIS MDCXVI
 ÆTAT. SVÆ. LXIII. PIE IN DŌIO OBDORMIENTI, BERNARD⁹ ROBINSONVS FRATER
 AC HÆRES HOC QVALECVNQ. MNHMEION AMORIS TESTIMONIVM COLLOCAVIT.

*Non sibi, sed Patriæ præluxit. Lampadis instar,
 Deperdens oleum; non operam Ille suam.*

*In minimi fide Sæpe, maioribus apto
 Maxima nunc Domini gaudia adire datur.* Mat. 25

**Bishop Robinson, 1598,
 Carlisle Cathedral, Cumberland.**

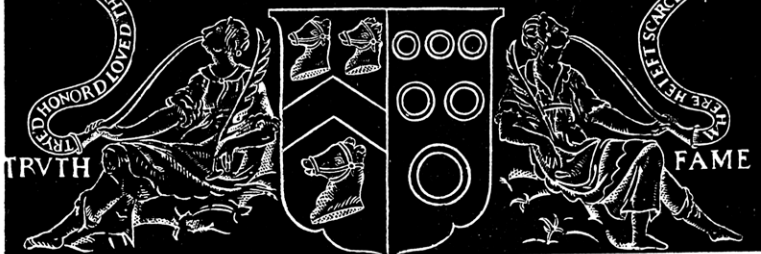
A MEMORATIVE EPITAPH FOR THE EXCELLENTLY
ACCOMPLISHT GENTLEMAN RICHARD BARWISE
LATE OF ILEKIRKE ESQ: HE DYED THE 13TH OF FEBR
1648 IN THE 47TH YEARE OF HIS AGE.

BELOWE GOOD BARWISE, CLOS'D IN BODYE LYES,
WHOSE SAINTLY SOVLE, IOYES CROWN'D ABOVE Y SKYES
CYTIES WISE GVIDE COUNTRIES CHEIFE ORNAMENT
IN GRACE AND NATVR'S GIFTS, MOST EMINENT
GRAVE PRVDENT, PIOUS STORD WITH VERTVES BEST
EXCHANGINGE LIFE FOR DEATH BY DEATH LIVES BLEST
OF WHOME TIS SAYD NONE HERE LIVED MORE APPROVED
NONE DYED MORE MIST, NONE MIST WAS MORE BELOVED
WHOSE VERTVOVS WIFE, INSABLE THOUGHTS DOTH MOVRNE
HER TVRTLES LOSS, TILL LAYD NEERE TO HIS VRNE

Oh pittye great soe choyse a Couple should
without Grand issue be reduced to mould,
Nor can they well while here they leaue a name
shall them suruue till they reuiue a gaine.

DEATH IS SWALLOWED VP IN VICTORY.

VIVIT POST FVNERA VIRTVS.



Richard Barwise, 1648,
Westward, Cumberland.

Roman capitals:—

Death is swallowed vp in victory.
Vivit post Fvnera virtvs.

Below on the dexter side is a figure emblematical of Truth, with a fillet with the words: "Tryed, honord, loved, from this world he's gone."

On sinister side a similar figure representing Fame, with the words: "Where he left scarce soe just wise good a one."

Richard Barwise was descended from Anthony Barwise, who bought the property from Thomas Dalston. He was a man of colossal stature and amazing strength. A stone is to be seen at Ilkirk called Barwise's stone, of prodigious size. It is asserted that he could throw it the length of his courtyard, but few men could raise it from the ground. He was called the Great Barwise, and his moral character held in estimation.