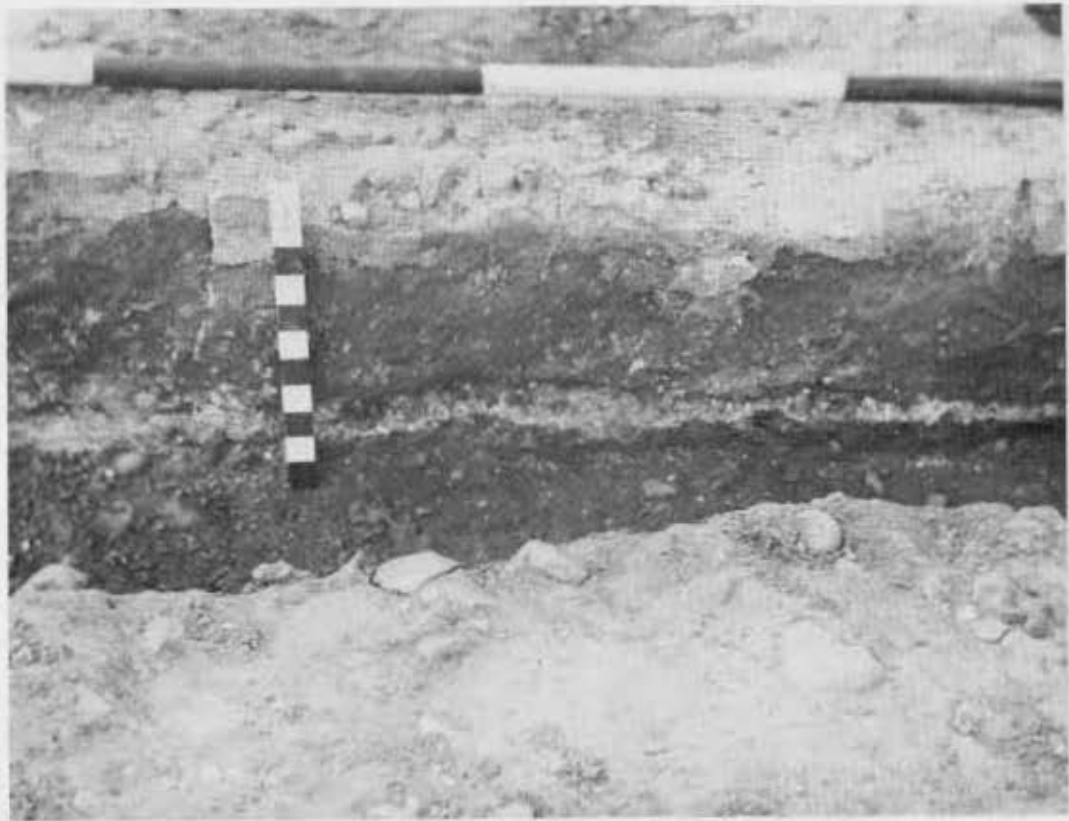




a.



b.

Plate VII a. Site 2 Period 2; central hearth and 'hob'; b. Close-up of the central hearth stone showing the bed of plaster upon which it was laid. (Scale in feet.)



Plate VIII. Site 3 Period 3a: Tile Kiln. (Scale in feet.)



Plate IX. Suggested reconstruction of French imported jug found on Site 2

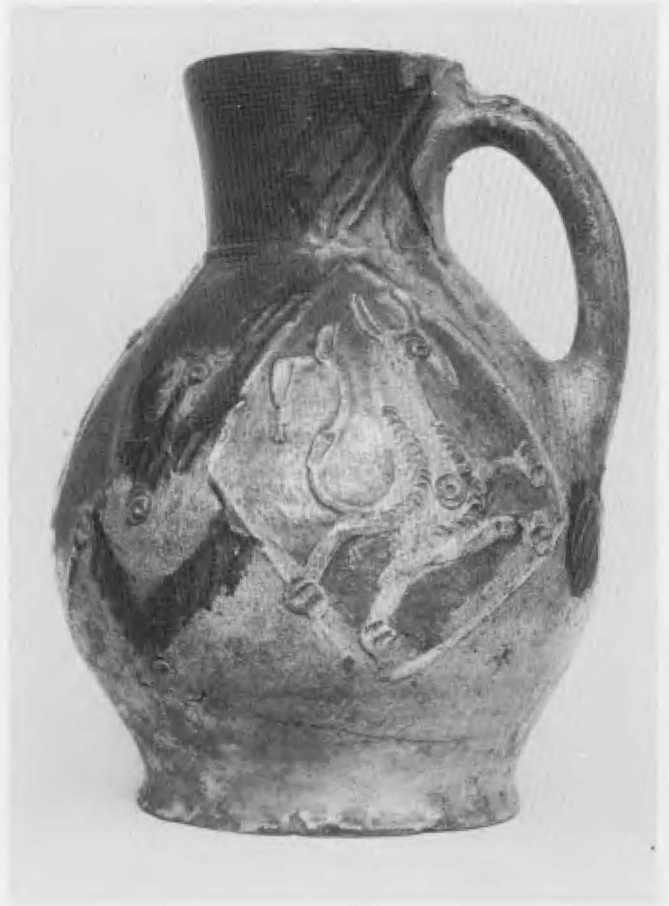


Plate X. British copy of French jug in British Museum (see p. 47) Reproduced by permission of the Trustees of the British Museum.



Plate XI. Site 2, Period 1: The Ventilator-finial. Reconstructed at the University of London, Institute of Archaeology. (Scale in inches)



Plate XII. Medieval bathing habits. A. From the Burn MS No. 345, Fol. 70  
With kind permission from the British Museum.

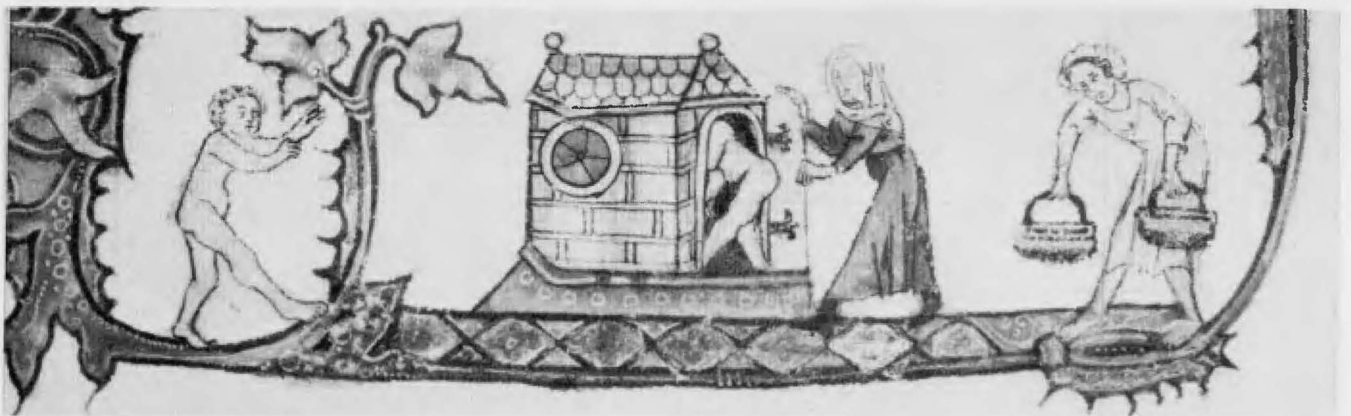


Plate XII. B. From a 14th century Psalter and Hours in the Walters Art Gallery, Baltimore, Maryland, U.S.A., by kind permission. Showing two apparent ventilators over the bath house.