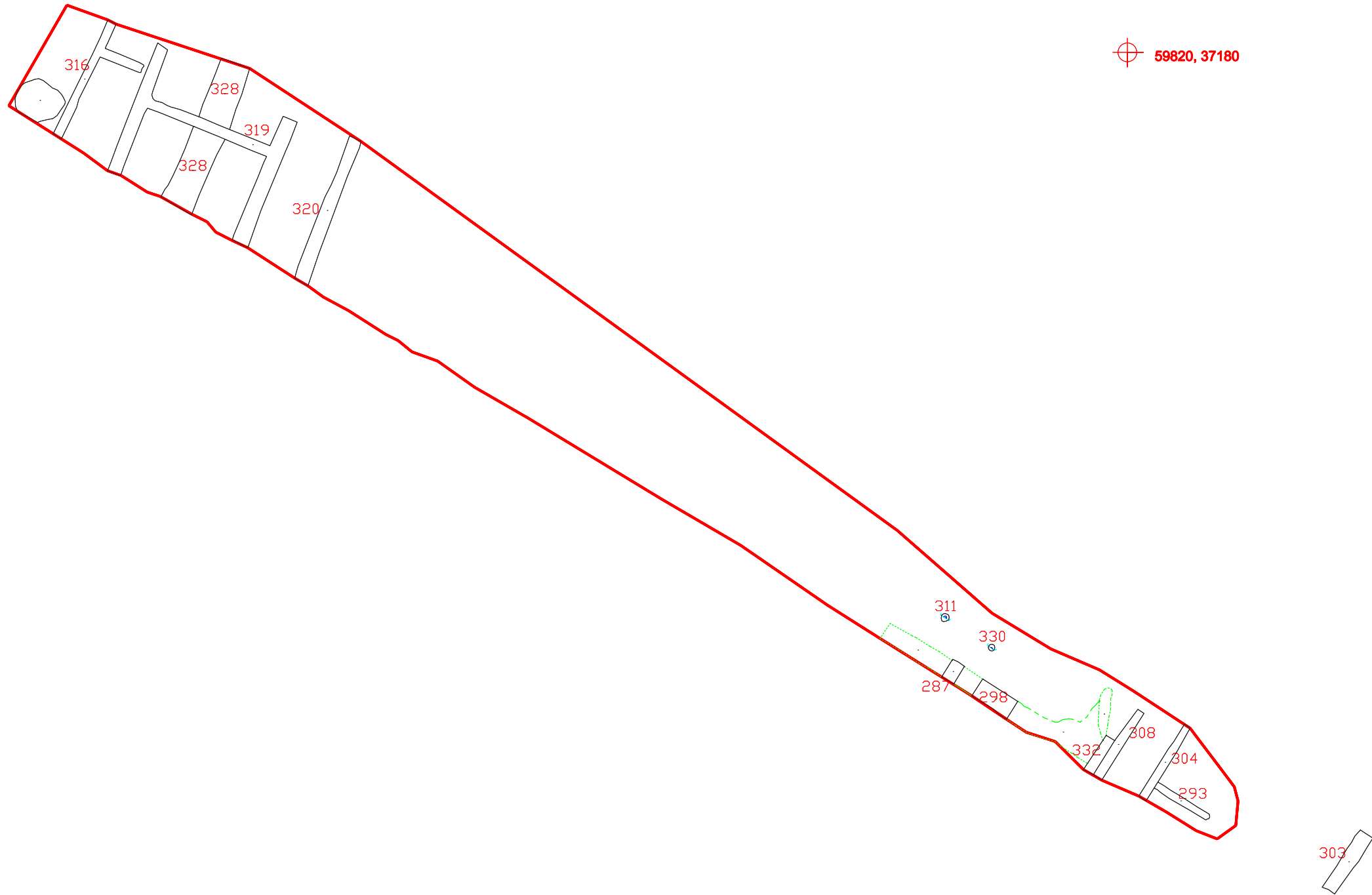


57955, 37180

59820, 37180



N
↑

Channel Tunnel Rail Link
Project Area 420
Significant Discovery Supplementary
Thurnham Roman Villa
(ARC 420/63+400 - 63+900/99)
(Watching Brief)

© Union Railways (South) Limited 2000.
Reproduced from the Ordnance Survey's 1:25,000 map of 1987
with the permission of the Controller of Her Majesty's Stationery
Office © Crown Copyright. Licence No. 854188.

SCALE 1:300

0 10m

- linear feature
- pit
- post hole
- extent of archaeological site
- Extrapolated Feature
- Truncated by Machine

Figure 14