

Database documentation for the Hayton Roman Pottery Database

Title of project:	Hayton Roman Pottery Database
Name of database file:	Hayton Roman pottery database v1.5.mdb

Name of table 1:	Tbl Context data	
Number of rows of data:	2739	
Primary key:	Site Code, Context, Subdivision	
Name of field	Full description of field and codes or terminology used	Data type and field length
Site Code	The site code designated for the project ("HAYTON")	Text (50)
Context	The context number/ code	Text (50)
Subdivision	The subdivision of a specific context, otherwise "0"	Text (50)
Category	Context Category List in Tbl KEYWORD LUT	Text (50)
Subcategory	Context type (pit, etc.)from Tbl keyword LUT	Text (50)
Interpretation	The interpretation of the context	memo
gridE	The Easting co-ordinate for the context	Double
GridN	The Northing Co-ordinate for the context	Double
Spotdate	The spot date for the context	Text (50)
Phase	The phase group the context has been placed in	Text (50)
Pottery Comments	Any comments based on the pottery assemblage from the context. E.G. "A lot of sooting"	Memo
Context key	The Context Keyword (after Booth 2000)	Text (50)
Feature	The Feature number the context is a part of, for layers the feature number is the same as the context number	Text (50)
Length	The overall length of the context in m.	Double
Width	The overall width of the context in m	Double
Diameter	The diameter, for a circular context, in m.	Double
Thickness	The average thickness of the context, in m	Double
Area	The site area in which the context is located	Text (50)
Ceramic Phase	The ceramic phase based on the pottery, if relevant	Text (50)
Soil Volume	The estimated soil volume, in cubic meters	double
Plot	The plot within which the context is located	Text (50)
Cxtcode	The Context code in Tbl Keyword LUT after Millet 2005	Text (50)
Group	The Group in which the context is located	Text (50)
Subgroup	The subgroup in which the context is located	Text (50)

Name of table 2:	Tbl Fabric Alias
-------------------------	-------------------------

Number of rows of data:	165	
Primary key:	Fabric Series, Fabric Code, Alias	
Name of field	Full description of field and codes or terminology used	Data type and field length
Fabric Series	The fabric series of which the fabric is a part	Text (50)
Fabric Code	The unique fabric code of the identified fabric within a given fabric series	Text (50)
Alias	The parallel fabric name	Text (50)
Ref	The bibliographic reference of the fabric parallel (link to Tbl Bibliography)	Text (50)
Site	The site from which the parallel comes from (Keyword LUT)	Text (50)
Fab Confidence	The confidence of the closeness of match. 1 = Certain, 2= Probably, 3 = Possibly	Text (50)

Name of table 3:	Tbl Form Series data	
Number of rows of data:	1	
Primary key:	Form series	
Name of field	Full description of field and codes or terminology used	Data type and field length
Form Series	The name of the form series defined	Text (50)
Defined By	The initials of the person who has defined the form series	Text (50)
Reference	The reference, if any, of the defined form series (link to TBL Bibliography)	Text (50)
Comments	Any further comments	memo
Drawing	The path name of the folder in which any digital images of the forms are stored	Text (255)

Name of table 4:	Tbl Fabric Series data	
Number of rows of data:	1	
Primary key:	Fabric Series	
Name of field	Full description of field and codes or terminology used	Data type and field length
Fabric Series	The name of the fabric series	Text (50)
Defined By	The initials of the person who has defined the fabric series	Text (50)
Reference	The reference, if any, of the defined form series (link to TBL Bibliography)	Text (50)
Comments	Any further comments	Memo
FabPath	The path name of the folder in which any digital images of the fabrics are stored	Text (255)

Name of table 5:	Tbl Pottery data	
Number of rows of data:	5620	

Primary key:	Pot ID (auto number)	
Name of field	Full description of field and codes or terminology used	Data type and field length
Pot ID	The unique key of each pottery record, assigned automatically	Autonumber
Site Code	The site code	Text (50)
Context	The context code	Text (50)
Subdivision	The context subdivision	Text (50)
Ware Series	The fabric series the fabrics come from	Text (50)
Fabric Code	The individual fabric	Text (50)
Typology Series	The form series the form derive from	Text (50)
Form Type	The form code	Text (50)
Form Code	Not used	Text (50)
Vessel Type	Not Used	Text (50)
Rim Type	Same as form type	Text (50)
Base	The base type, list in Tbl Keyword LUT, after Booth 2000	Text (50)
Handle	The handle type, list in Tbl Keyword LUT, after Booth 2000	Text (50)
Part	, list in Tbl Keyword LUT, after Booth 2000, e.g. "Rim" or "Base" etc	Text (50)
Retrieval	list in Tbl Keyword LUT, e.g. "Dry Sieved"	Text (50)
Spout	The spout type, list in Tbl Keyword LUT, after Booth 2000	Text (50)
NoSh	The number of sherds	Long integer
Weight	The weight of the sherds in g	Double
Min Vess	The minimum number of rims by context,	Long Integer
Rim Equivalent	The estimated rim equivalent as a percentage	Double
RD	The rim diameter in mm	Double
BD	The base diameter, in mm	Double
BVE	The estimated base equivalent as a percentage	Double
Groove	The grooved type, list in Tbl Keyword LUT, after Booth 2000	Text (50)
Cordon	The cordon type, list in Tbl Keyword LUT, after Booth 2000	Text (50)
Burn Z	The burnished zone type, list in Tbl Keyword LUT, after Booth 2000	Text (50)
Burn L	The burnished lattice, list in Tbl Keyword LUT, after Booth 2000	Text (50)
Lattice	The lattice type, list in Tbl Keyword LUT, after Booth 2000	Text (50)
Rustic	The rustic decoration type, list in Tbl Keyword LUT, after Booth 2000	Text (50)
Barbot	The barbotine decoration type, list in Tbl Keyword LUT, after Booth 2000	Text (50)
R Cast	The rough cast decoration type, list in Tbl Keyword LUT, after Booth 2000	Text (50)
Paint R	The red paint decoration type, list in Tbl Keyword LUT, after Booth 2000	Text (50)
Paint W	The white paint type, list in Tbl Keyword LUT, after Booth 2000	Text (50)
Comb	The combed decoration type, list in Tbl Keyword LUT, after Booth 2000	Text (50)
Incise	The incised decoration type, list in Tbl Keyword LUT, after Booth 2000	Text (50)
Impressed	The impressed decoration type, list in Tbl Keyword LUT, after Booth 2000	Text (50)
Stamp	The stamp type, list in Tbl Keyword LUT, after Booth 2000	Text (50)

Roulette	The rouletting type, list in Tbl Keyword LUT, after Booth 2000	Text (50)
Other	Any other decoration type, list in Tbl Keyword LUT, after Booth 2000	Text (50)
Confidence	The confidence in fabric and form identification, list in Tbl Keyword LUT, after Booth 2000	Text (50)
Joins	Any cross join(s) to other contexts	Text (50)
Wear	The wear type, list in Tbl Keyword LUT, after Booth 2000	Text (50)
Abrasion	Free text on abrasion or mortar deposits	Text (50)
Soot	The sooting type, list in Tbl Keyword LUT, after Booth 2000	Text (50)
Repair	The repair type, list in Tbl Keyword LUT, after Booth 2000	Text (50)
Reuse	The reuse type, list in Tbl Keyword LUT, after Booth 2000	Text (50)
Drawing	The drawing number assigned to a significant sherd	Long Integer
Comments	Any comments about the record	Memo
Catalogue entry	The samian catalogue entry	memo
Samian Vessel Count	Samian vessel count if calculated differently from MV or Nosh	Long Integer
Decoration	Samian decoration description	Memo
Intrusive?	Is this sherd intrusive to the assumed date of the context?	Yes/No
Sample no	The sample number from which the pottery was recovered	
Time entered	Automatically records the time the record is entered	Date/time
Day entered	Automatically records the date the record was entered	Date/ time
Draw?	Has this piece been selected for drawing?	Yes/ No
Period	What date range is this sherd linked to Tbl Keyword LUT for allowed terms	Text (50)
SF No	The registered small find number of the piece	Long Integer
Decorated Samian	Is this a decorated samian form?	Yes/no
Graffiti	Is there any graffiti on the sherd?	Yes/ no
Fabric Type	Is the sherd selected for the fabric series	Yes/ no
Form Type Sherd	Is the sherd selected for the form series	Yes/ no
Stamp Code	What is the stamp code (linking to Tbl stamp Data by site code and catalogue number) of the stamp	Long Integer
Easting	The easting of the 3D co-ordinate of the vessel/ sherd in m	Double
Northing	The northing of the sherds 3D co-ordinate in m	Double
Height	The height of the vessels 3D co-ordinate in m	Double
Finger Print	Note if there are fingerprints on the vessel	Text (50)
Catalogue no	The samian catalogue number	Long Integer

Name of table 6:	Tbl Form data	
Number of rows of data:	386	
Primary key:	Form ID	
Name of field	Full description of field and codes or terminology used	Data type and field length
Form ID	The unique form ID, assigned automatically	Autonumber
Form Series	The form series the form is part of	Text (50)
Fabric Series	The fabric series the fabric is part of	Text (50)
Fabric Code	The fabric code for the form definition	Text (50)

Form Type	The form code used in the recording stage	Text (50)
Vessel Type	List of vessel types, linked to vessel type in Tbl Keyword LUT, from Booth 2000	Text (50)
Publication Name	The final publication name of the form type	Text (50)
Common Name	The common name, if any, of the vessel type	Text (50)
Rim Description	The rim description, after Booth 2000, listed in Tbl Keyword LUT	Text (50)
Base Type	The base type after Booth 2000, listed in Tbl Keyword LUT	Text (50)
Handle Type	The Handle type after Booth 2000, listed in Tbl Keyword LUT	Text (50)
Spout Type	The Spout Type, after Booth 2000, listed in Tbl Keyword LUT	Text (50)
Provenance	Where the form comes from	Text (50)
Period	The date range of the form	Text (50)
Description	The natural language description of the form	Text (255)
Comments	Any further comments	memo
Decorated?	Is it a decorated form?	Yes/No
Rim Class	The rim class of the form, list in Tbl Keyword LUT, after Booth 2000.	Text (50)

Name of table 7:	Tbl Form alias	
Number of rows of data:	338	
Primary key:	Alias ID	
Name of field	Full description of field and codes or terminology used	Data type and field length
Alias ID	The unique identifier of the record, generated automatically	Autonumber
FormID	The form id in Tbl form data	Long Integer
Form Alias	The form parallel	Text (50)
Reference	The reference the parallel is from	Text (50)
Alias Site	The site the parallel is from	Text (50)
Comments	Any further comments	Memo
Alias Period	The date range the parallel has been given	Text (50)
ID Confidence	The confidence in the identification 2 = probable, 3 = possible	Text (50)

Name of table 8:	Tbl phase information	
Number of rows of data:	11	
Primary key:	Site code, Phase	
Name of field	Full description of field and codes or terminology used	Data type and field length
Site Code	The site code	Text (50)
Phase	The phase code	Text (50)
Phase Name	The full phase name	Text (50)
Phase Period	The date range of the phase, linked to Tbl Keyword LUT	Text (50)
Comments	Any further comments	Memo

Name of table 9:	Tbl spot dates	
Number of rows of data:	142	
Primary key:	SD ID	
Name of field	Full description of field and codes or terminology used	Data type and field length
SD ID	The automatically generated unique reference	Autonumber
Site Code	The site code	Text (50)
Context	The context number	Text (50)
Sub Division	The context subdivision	Text (50)
SF Number	The small find number	Text (50)
Find Type	The find type – e.g. ‘coin’	Text (50)
Description	The description of the find	Text (255)
Period	The date range given	Text (50)
Comments	Any further comments	Memo

Name of table 10:	Tbl Keyword LUT	
Number of rows of data:	764	
Primary key:	Keyword ID	
Name of field	Full description of field and codes or terminology used	Data type and field length
KeywordID	Automatically generated number	autonumber
Project Type	List of project types	Text (50)
Find Type	List of finds types	Text (50)
Primary Forming	List of primary forming (Orton et al 1993)	Text (50)
Secondary Forming	Orton et al 1993	Text (50)
Proximity	List of site proximities	Text (50)
Site Names	List of site names	Text (50)
Rim Group	Rim groups relating to Rim codes (below)	Text (50)
Retrieval Method	List of retrieval methods	Text (50)
Site Type	List of Site types	Text (50)
Rim Names	Booth 2000	Text (50)
Rim	Booth 2000	Text (50)
Rim Code	Booth 2000	Text (50)
Rim Mnem	Mnemonic of rim types	Text (50)
SS Mnems	Booth 2000	Text (50)
Cxt Group	Order for Cxt code (below)	Text (50)
Feel	Orton et al 1993	Text (50)
Fracture	Orton et al 1993	Text (50)
Frequency	Orton et al 1993	Text (50)
Glaze Extent	Orton et al 1993	Text (50)
VF Order	The vessel function order for table creation	Text (50)
Vessel Function	Booth 2000	Text (50)

Vessel Class	Booth 2000	Text (50)
VT Code	Booth 2000	Text (50)
VT Comments	Booth 2000	Text (50)
Vessel Type Group	Booth 2000	Text (50)
Glaze Finish	Orton et al 1993	Text (50)
Hardness	Orton et al 1993	Text (50)
Cxt Code	Booth 2000	Text (50)
Inclusion Type	Booth 2000	Text (50)
Period	A period range	Text (50)
Date From	Year from	Long Integer
Date To	Year To	Long Integer
Qualifier	List of confidence levels	Text (50)
Rounding	Orton et al 1993	Text (50)
Size	Orton et al 1993	Text (50)
Sorting	Orton et al 1993	Text (50)
Sphericity	Orton et al 1993	Text (50)
FC Letter	Booth 2000	Text (50)
Date Type	List of ways a date has been arrived at e.g. 'coins'	Text (50)
BL Code	Booth 2000	Text (50)
Fabric Class	Booth 2000	Text (50)
BL Type	Booth 2000	Text (50)
BL Men	Booth 2000	Text (50)
BZ Code	Booth 2000	Text (50)
BZ Type	Booth 2000	Text (50)
MZ men	Booth 2000	Text (50)
Base Code	Booth 2000	Text (50)
Base Type	Booth 2000	Text (50)
base type mnemonic	Booth 2000	Text (50)
Vessel Type	Booth 2000	Text (50)
Context Type	Booth 2000	Text (50)
Part	List of pottery parts. E.g. rim, base etc	Text (50)
Spout code	Booth 2000	Text (50)
Spout Name	Booth 2000	Text (50)
Spout Mnemonic	Booth 2000	Text (50)
Handle Name	Booth 2000	Text (50)
Handle Code	Booth 2000	Text (50)
Groove Type	Booth 2000	Text (50)
Cord code	Booth 2000	Text (50)
Cord men	Booth 2000	Text (50)
Cordon type	Booth 2000	Text (50)
Sooting Code	Booth 2000	Text (50)
Sooting type	Booth 2000	Text (50)
Sooting Mnemonic	Booth 2000	Text (50)
Wear Mem	Booth 2000	Text (50)
Wear Code	Booth 2000	Text (50)
Wear Type	Booth 2000	Text (50)
Lattice code	Booth 2000	Text (50)
Lat mem	Booth 2000	Text (50)
Lat type	Booth 2000	Text (50)

Rust code	Booth 2000	Text (50)
Rust type	Booth 2000	Text (50)
rust men	Booth 2000	Text (50)
Barbo code	Booth 2000	Text (50)
Barbo type	Booth 2000	Text (50)
Barbo mem	Booth 2000	Text (50)
Rcast code	Booth 2000	Text (50)
Rcast type	Booth 2000	Text (50)
Rcast mem	Booth 2000	Text (50)
Pr code	Booth 2000	Text (50)
Pr type	Booth 2000	Text (50)
Pr mem	Booth 2000	Text (50)
Incised Code	Booth 2000	Text (50)
Incised Type	Booth 2000	Text (50)
Incised Mem	Booth 2000	Text (50)
Roul code	Booth 2000	Text (50)
Roul Type	Booth 2000	Text (50)
Roul Mem	Booth 2000	Text (50)
Other Code	Booth 2000	Text (50)
Other Type	Booth 2000	Text (50)
Other Mem	Booth 2000	Text (50)
Stamp Code	Booth 2000	Text (50)
Stamp Type	Booth 2000	Text (50)
Stamp mem	Booth 2000	Text (50)
Imp code	Booth 2000	Text (50)
Imp Type	Booth 2000	Text (50)
Imp Mem	Booth 2000	Text (50)
Comb code	Booth 2000	Text (50)
Comb type	Booth 2000	Text (50)
Comb mem	Booth 2000	Text (50)
WP code	Booth 2000	Text (50)
WP type	Booth 2000	Text (50)
WP Mem	Booth 2000	Text (50)
Repair code	Booth 2000	Text (50)
Repair type	Booth 2000	Text (50)
Repair mem	Booth 2000	Text (50)
Reuse code	Booth 2000	Text (50)
Reuse type	Booth 2000	Text (50)
Reuse mem	Booth 2000	Text (50)
Confidence code	Booth 2000	Text (50)
Confidence type	Booth 2000	Text (50)
Confidence mem	Booth 2000	Text (50)
Groove code	Booth 2000	Text (50)
G m	Booth 2000	Text (50)
Domain	Type of decoration	Text (50)
Ox code	Concordance to Booth 2000 between 'dec type'	Text (50)
Dec type	Decoration type from other sources	Text (50)
Dec mnemonic	Booth 2000	Text (50)
Cxt category	Millet 2006	Text (50)

Handle Mnemonic	Booth 2000	Text (50)
-----------------	------------	-----------

Name of table 11:	Tbl Stamp Data	
Number of rows of data:	8	
Primary key:	Site code, catalogue number	
Name of field	Full description of field and codes or terminology used	Data type and field length
Site code	The site code	Text (50)
Catalogue number	The catalogue number	Long integer
Description	The description of the stamp	memo
Date	The date range of the stamp, linked to list in Tbl Keyword LUT	Text (50)
Stamp Pathway	The pathway to the folder in which stamp pictures are digitally stored	Text (255)
Comments	Any further comments	memo
Drawing no	The drawing number assigned to the stamp	Long integer

Name of table 13:	Tbl Stamp series data	
Number of rows of data:	1	
Primary key:	Site Code	
Name of field	Full description of field and codes or terminology used	Data type and field length
Site Code	The site code	Text (50)
Defined By	The initials of the person who created the stamp series	Text (50)
Reference	The bibliographic reference	Text (50)
Drawing	The pathway to the folder containing the drawings	Text (255)
Comments	Any further comments	Memo

Name of table 14:	Tbl bibliography	
Number of rows of data:	72	
Primary key:	Reference	
Name of field	Full description of field and codes or terminology used	Data type and field length
Reference	The Harvard bibliographic reference. E.g. "Booth 2000"	Text (50)
Authors	The authors full name	Text (255)
Title	The title of the publication	Text (255)
Journal	The journal title	Text (255)
Publisher	The publisher	Text (255)
Place	Place printed	Text (50)
Comments	Any further Comments	Memo

Name of table 16:	Tbl Site Details	
Number of rows of data:	1	
Primary key:	Site Code	
Name of field	Full description of field and codes or terminology used	Data type and field length
Site Code	The site code	Text (50)
Site Name	The full name of the site	Text (255)
Project Name	The full name of the project	Text (255)
Site Location	The OS grid reference of the site location	Text (50)
Site Type	The site type, from list in Tbl keyword LUT, e.g. Rural, urban etc.	Text (50)
Comments	Any further comments	memo
Accession Code	The museum accession code	Text (50)
Site Summary	A summary of the site	memo
Region	The region the site is located	Text (50)
Country	The country the site is located in	Text (50)
County	The county the site is located in	Text (50)
District	The district the site is located in	Text (50)
Parish	The parish the site is located in	Text (50)
Fabric Series	The fabric series used on this site, links to Tbl fabric series	Text (50)
Form Series	The form series used for this site, linked to Tbl Form Series	Text (50)
Recorded By	The initials of the person recording the data	Text (50)
HER Code	The HER code	Text (50)
Project Type	The type of project that was carried out. E.g. 'excavation', 'evaluation' listed in Tbl Keyword LUT	Text (50)
Method statement	The methodology used	memo

Name of table 19:	Tbl Fabric Site proximity	
Number of rows of data:	150	
Primary key:	Site code, fabric series, fabric code	
Name of field	Full description of field and codes or terminology used	Data type and field length
Site code	The site code	Text (50)
Fabric series	The fabric series	Text (50)
Fabric code	The fabric code	Text (50)
Proximity	The proximity of the fabric source to the site, list in Tbl Keyword LUT, e.g. "Local", "2Regional" etc	Text (50)

Name of table 20:	Tbl Fabric Data	
Number of rows of data:	118	
Primary key:	Fabric Series, Fabric Code	

Name of field	Full description of field and codes or terminology used	Data type and field length
Fabric Series	The fabric series	Text (50)
Fabric Code	The fabric code	Text (50)
Comments	Any further comments	Memo
Main Inclusions	The main inclusions defining the fabric	Text (50)
Description	The natural language description of the fabric	Memo
Ware Type	The ware type, after codes in Booth 2000 linked to list in Tbl Keyword LUT	Text (50)
Colour	The colour of the fabric	Text (50)
Core Colour	The core colour (in Munsell code)	Text (50)
Ext margin	The external surface colour (as a Munsell code)	Text (50)
Int Margin	The Internal Margin of the fabric, as a Munsell Code	Text (50)
Int Surface	The Internal Surface of the fabric (as a Munsell code)	Text (50)
Ext Surface	The External Surface of the fabric (as a Munsell code)	Text (50)
Hardness	The hardness of the fabric. List from Orton et al 1993, Peacock 1977	Text (50)
Feel	The feel of the fabric. List from Orton et al 1993, Peacock 1977	Text (50)
Fracture	The fracture of the fabric. List from Orton et al 1993, Peacock 1977	Text (50)
Primary Forming	The primary forming of the vessel, e.g. wheel made after Orton et al 1995	Text (50)
Secondary Forming	The secondary forming of the vessel, e.g. wheel made after Orton et al 1995	Text (50)
Slip	The slip of the vessel, e.g. wheel made after Orton et al 1993	Text (50)
Extent	The extent of the slip, e.g. wheel made after Orton et al 1993	Text (50)
Provenance	The origin of the fabric	Text (50)
Date	The date range of the fabric	Text (50)
Glaze Extent	The glaze extent on the fabric, after Orton et al 1993	Text (50)
Glaze Colour	The glaze colour	Text (50)
Common Name	The common name of the fabric, after Tomber and Dore 1999	Text (50)

Bibliography

Booth 2000 **The Oxford Archaeology pottery recording system**. Unpublished Oxford Archaeology manual.

Millet M. 2006: **Shiptonthorpe, East Yorkshire: Archaeological Studies of a Romano-British Roadside settlement**. Yeadon: Yorkshire Archaeological Report No 5

Orton, Tyers and Vince 1993 **Pottery in Archaeology** Cambridge: CUP

Peacock, D.P.S. 1977 **Pottery and early commerce: characterization and trade in Roman and later ceramics**. London: Academic press

Tomber R. and Dore S. 1998 **The National reference Fabric series** London: Molass Occasional Paper 1

Relationships

Please include an entity relationship diagram to show the relationships between your database tables

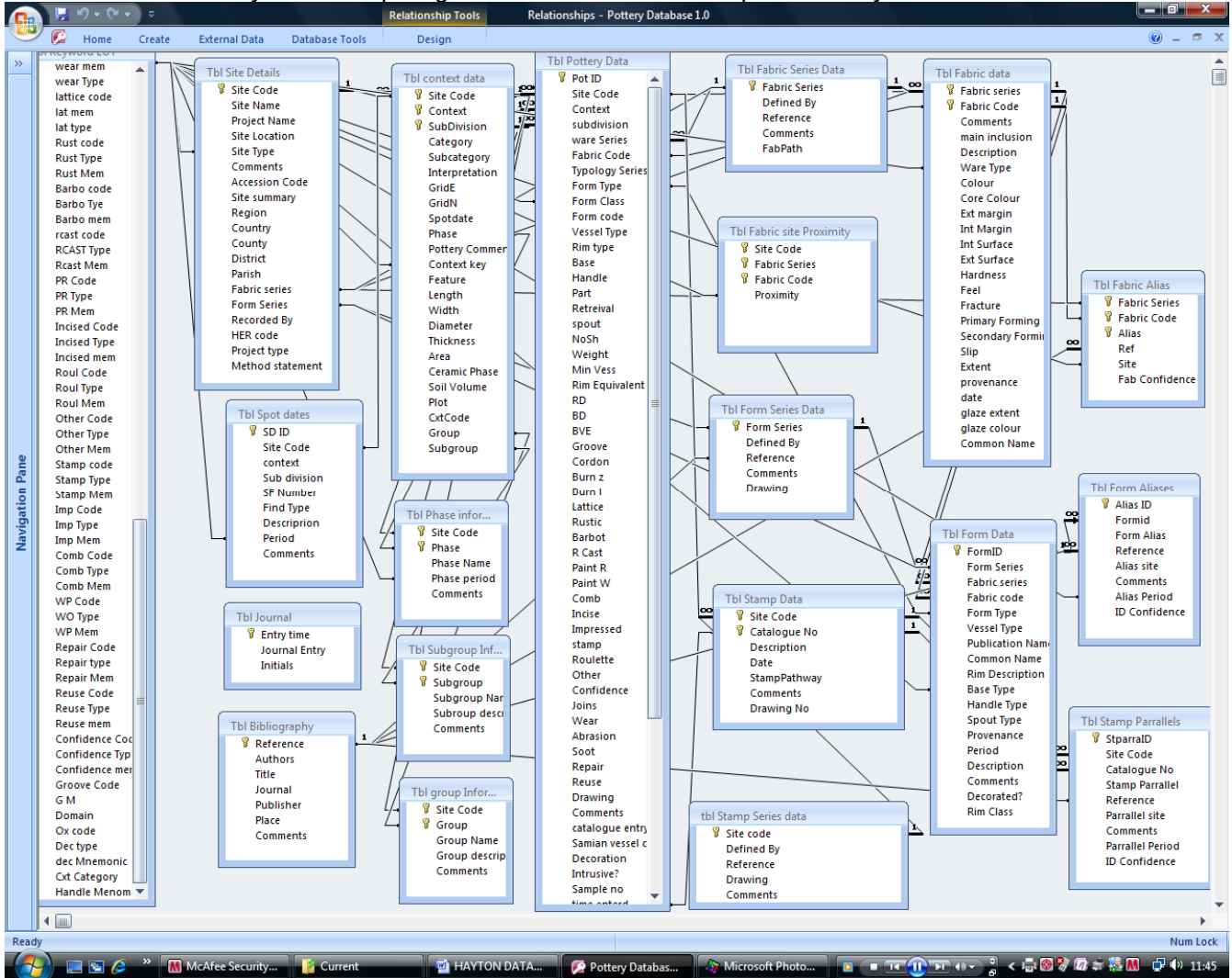


Figure 1 All Tables and their relationships

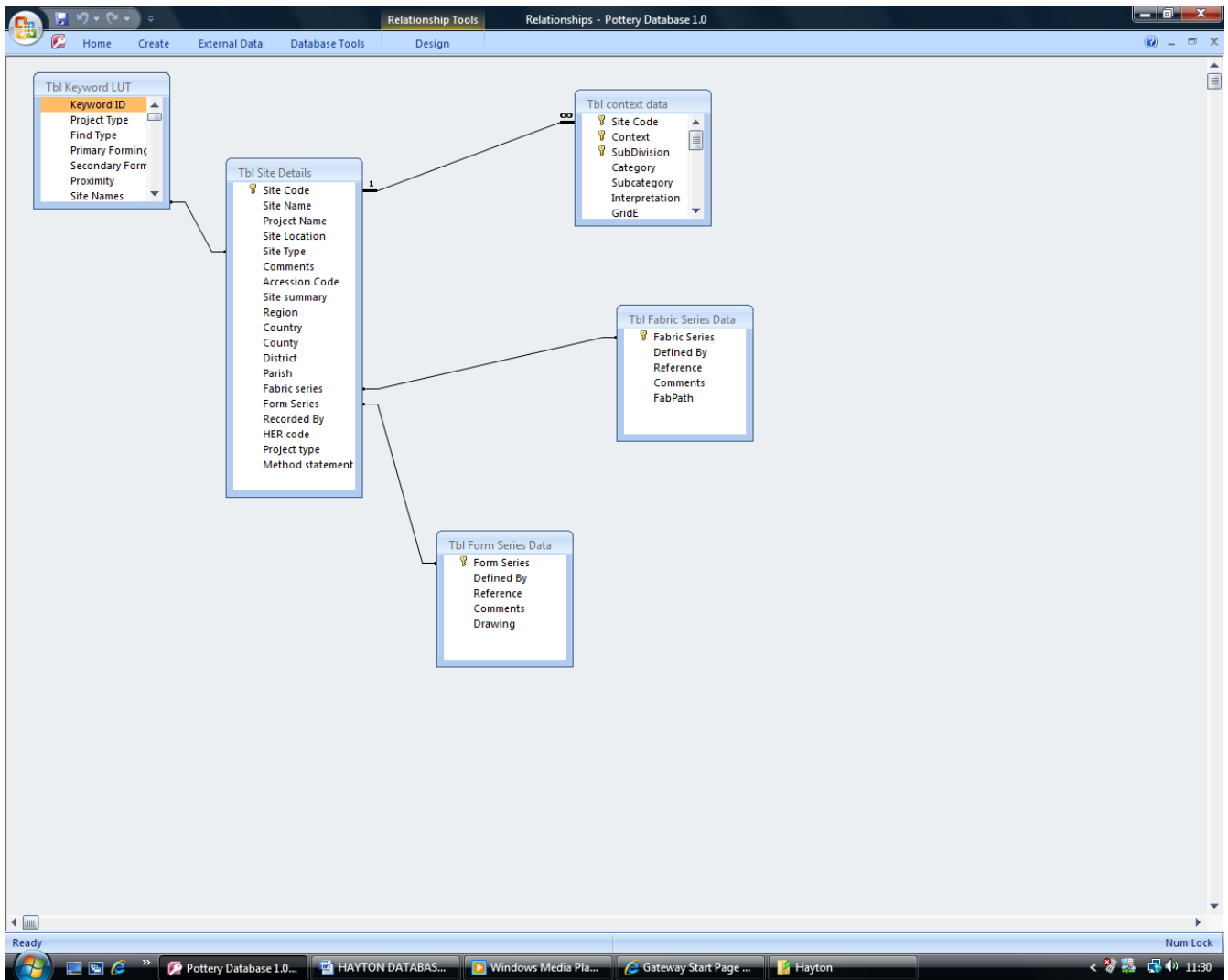


Figure 2 Links to Tbl Site Details

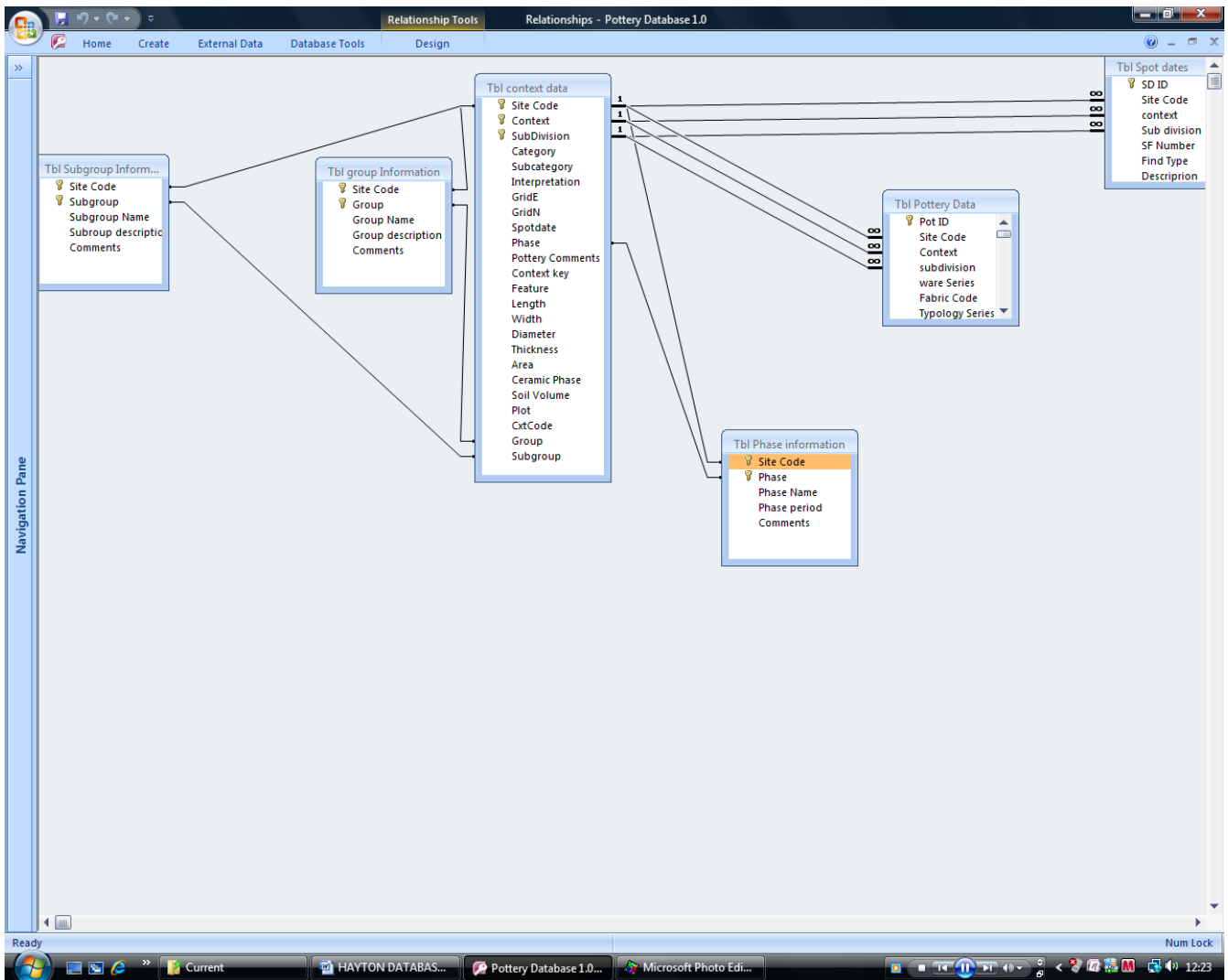


Figure 3 Links to Tbl Context Data

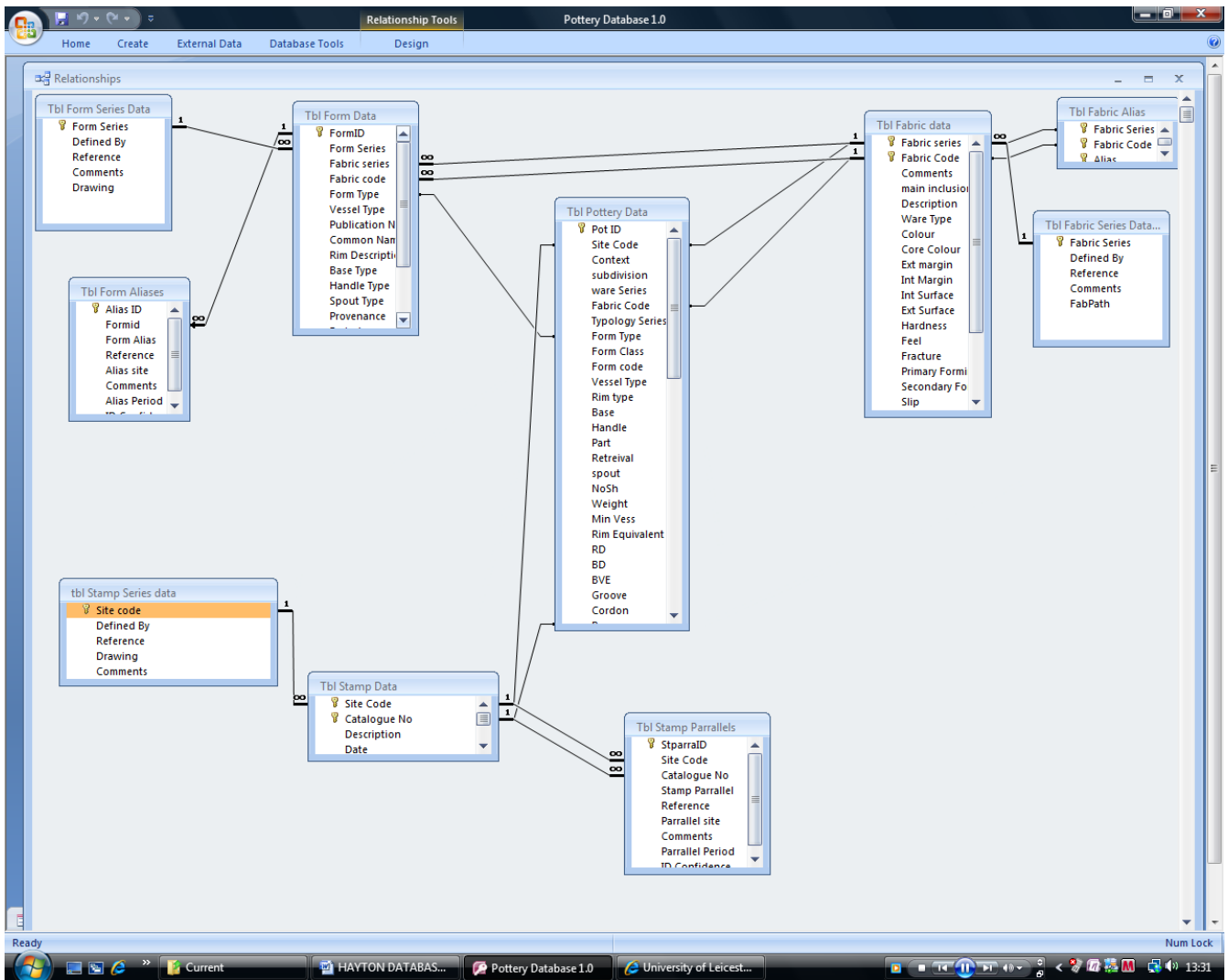


Figure 4 Links to Tbl Pottery Data