

Figure 3.1. Comparative plot of NMP mapping and excavated features at Watlington (NAU Archaeology excavation plan source: Sandrine Whitmore of NAU Archaeology).

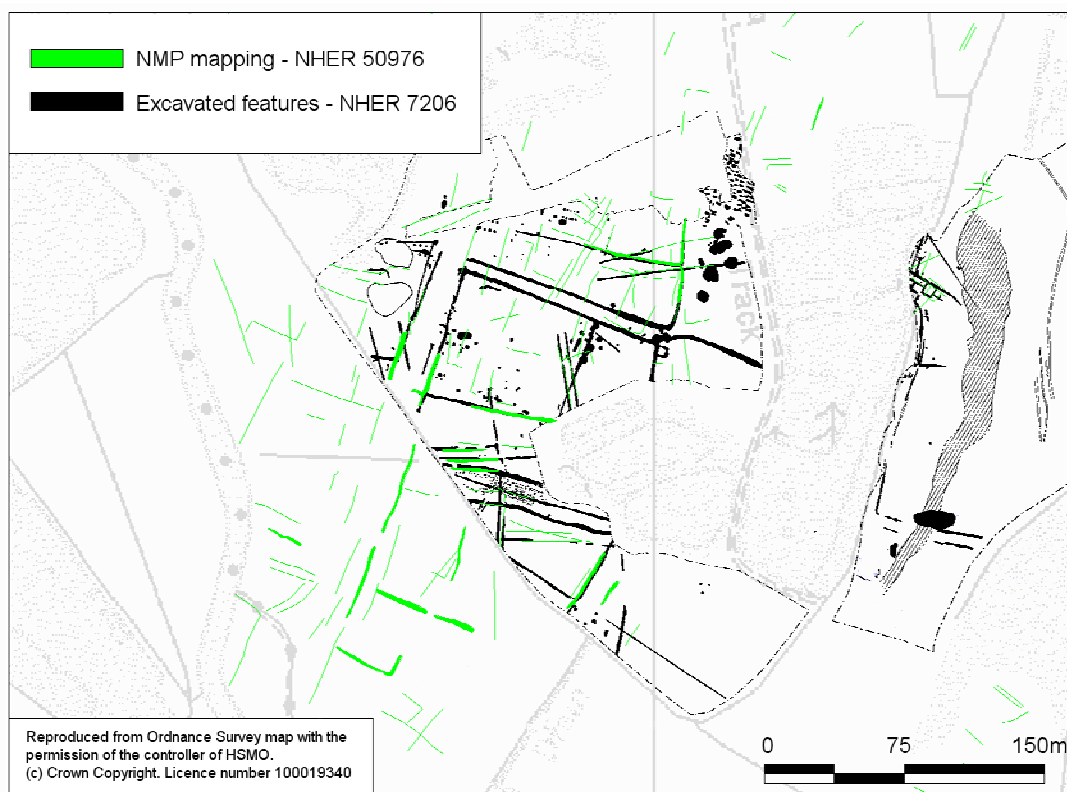


Figure 3.2. Comparative plot of NMP mapping and excavated features at Billingford. (NAU Archaeology excavation plan source: Wallis 2005, fig.5).

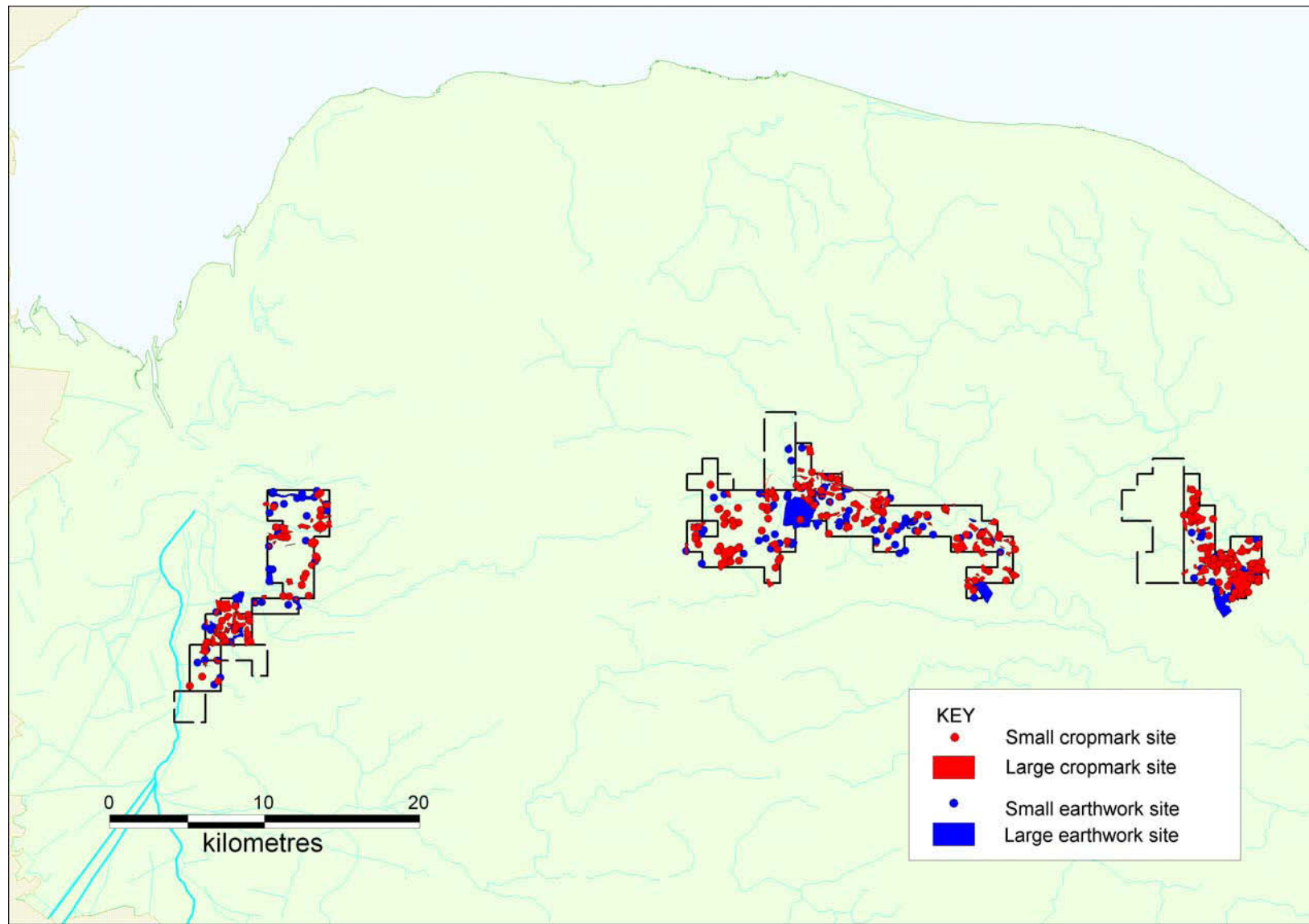


Figure 3.3. Distribution of earthwork and cropmark sites within the Sub-Units ('Large' sites are defined as those measuring over 0.025 sq km in area).