

Database / Spreadsheet documentation for the Archaeology Data Service

Please fully document and record any databases that you intend to submit to the ADS for archiving. This will help us prepare them for archiving and online dissemination and will enable future re-use of the data by others.

If you already have documentation for your database in another format and would prefer us to work with this instead, this should not be a problem as long as it accurately describes your data tables and any relationships between them.

Title of project:	South Yorkshire Historic Environment Characterisation Project
Name of database/ spreadsheet file:	ExportHLC.csv

Repeat the following section for each table within your database:

Name of table / worksheet 1:	ExportHLC.csv	
Purpose of table/worksheet:	Direct export table from HBSMR database showing current landscape character (for archive purposes, use GIS tables for a less technical view of data)	
Number of rows of data:	47	
Primary key (database only):	HLCUID	
Name of field	Full description of field and codes or terminology used	Data type and field length (database only)
HLCUID	Unique identifier (used in GIS files, documents and other csv files)	
BroadTypeCode	Coded Broad Historic Character classification	
BroadTypeDesc	Broad Historic Character classification	
HLCTypeCode	Coded more specific Historic Character classification	
HLCTypeDesc	More specific Historic Character classification	
Confidence	Confidence of the Broad and HLC Type	
FullTypeCode	Combined code using BroadTypeCode and HLCTypeCode	
Name	Name of polygon	
Summary	Summary data on historic environment	
Description	Information on the current and past historic characteristics of this polygon. Includes further information on historic legibility.	
YearFrom	Date of origin of the historic character recorded by Broad and HLC Type	
FromConf	Confidence of date of origin of the historic character recorded by Broad and HLC Type	
YearTo	Final year of the historic character recorded by Broad and	

	HLC Type	
ToConf	Confidence of final year of the historic character recorded by Broad and HLC Type	
Easting	6 figure eastern Grid Reference	
Northing	6 figure northern Grid Reference	
Area	Area of polygon in hectares	
GridRef	8 Figure Grid Reference for centre of the polygon	
MapSheet	Map Sheet polygon is on	
MinX	lowest grid reference X co-ordinate for polygon boundary	
MinY	lowest grid reference Y co-ordinate for polygon boundary	
MaxX	Highest grid reference X co-ordinate for polygon boundary	
MaxY	Highest grid reference Y co-ordinate for polygon boundary	
Attribute1TypeCode	Coded attribute name (see Final Report for scope notes of each attribute)	
Attribute1Type	Attribute name (see Final Report for scope notes of each attribute)	
Attribute1ValueCode	Coded attribute type (see Final Report for scope notes of each attribute)	
Attribute1Value	Attribute type (see Final Report for scope notes of each attribute)	
Attribute2TypeCode	Coded attribute name (see Final Report for scope notes of each attribute)	
Attribute2Type	Attribute name (see Final Report for scope notes of each attribute)	
Attribute2ValueCode	Coded attribute type (see Final Report for scope notes of each attribute)	
Attribute2Value	Attribute type (see Final Report for scope notes of each attribute)	
Attribute3TypeCode	Coded attribute name (see Final Report for scope notes of each attribute)	
Attribute3Type	Attribute name (see Final Report for scope notes of each attribute)	
Attribute3ValueCode	Coded attribute type (see Final Report for scope notes of each attribute)	
Attribute3Value	Attribute type (see Final Report for scope notes of each attribute)	
Attribute4TypeCode	Coded attribute name (see Final Report for scope notes of each attribute)	
Attribute4Type	Attribute name (see Final Report for scope notes of each attribute)	
Attribute4ValueCode	Coded attribute type (see Final Report for scope notes of each attribute)	
Attribute4Value	Attribute type (see Final Report for scope notes of each attribute)	
Attribute5TypeCode	Coded attribute name (see Final Report for scope notes of each attribute)	
Attribute5Type	Attribute name (see Final Report for scope notes of each attribute)	
Attribute5ValueCode	Coded attribute type (see Final Report for scope notes of each attribute)	
Attribute5Value	Attribute type (see Final Report for scope notes of each attribute)	
Attribute6TypeCode	Coded attribute name (see Final Report for scope notes of	

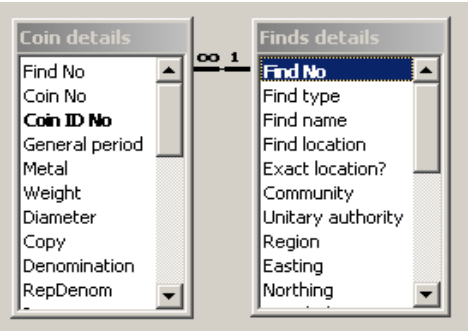
	each attribute)	
Attribute6Type	Attribute name (see Final Report for scope notes of each attribute)	
Attribute6ValueCode	Coded attribute type (see Final Report for scope notes of each attribute)	
Attribute6Value	Attribute type (see Final Report for scope notes of each attribute)	

Name of table / worksheet 2:		
Purpose of table/worksheet:		
Number of rows of data:		
Primary key (database only):		
Name of field	Full description of field and codes or terminology used	Data type and field length (database only)

Name of table / worksheet 3:		
Purpose of table/worksheet:		
Number of rows of data:		
Primary key (database only):		
Name of field	Full description of field and codes or terminology used	Data type and field length (database only)

Relationships (database only)

Please include an entity relationship diagram to show the relationships between your database tables



The completed documentation should be submitted to the ADS in **digital** form along with the deposited data that it describes, or via e-mail to Catherine Hardman at csh3@york.ac.uk