

John Samuels Archaeological Consultants

The Manor, South Street, Normanton on Trent, Newark, Nottinghamshire NG23 6RQ

Telephone 01636 821727 Fax 01636 822080



Plot 1, Poachers Lane,
Sudbrooke, Lincolnshire:

An Archaeological Watching Brief

Produced by

John Samuels Archaeological Consultants

For

Truelove Homes Ltd
Kingerby Hall
Kingerby
Market Rasen
Lincolnshire
LN8 3PF

December, 1996

Plot 1, Poachers Lane,
Sudbrooke, Lincolnshire:

An Archaeological Watching Brief.

CONTENTS:

SUMMARY

1.0 INTRODUCTION

2.0 PROCEDURE AND RESULTS OF THE WATCHING BRIEF

3.0 CONCLUSIONS

4.0 FIGURES

APPENDIX A: The Photographic Record

APPENDIX B: Copy of Specification

SUMMARY

John Samuels Archaeological Consultants was commissioned by Truelove Homes Ltd to undertake an archaeological watching brief during ground works connected with residential development on land to the south of Poachers Lane, Sudbrooke, Lincolnshire NGR TF 0355 7625.

The house foundation trenches for Plot 1 had been excavated previously but had become overgrown and had to be cleaned. Foundation trenches for a double garage were newly excavated as were drainage and service trenches. Below ground excavation was carried out under continual archaeological supervision.

No features or artifacts of archaeological interest were present.

1.0 INTRODUCTION

- 1.1 Planning permission was granted for residential development to the south of Poachers Lane, Sudbrooke, Lincolnshire. Planning permission was granted subject to a condition for an archaeological watching brief.
- 1.2 The local geology is shallow permeable calcareous fine loamy soils over limestone, some affected by ground water with some slowly permeable seasonally waterlogged clayey soils (Soil Survey of England and Wales, 1983).
- 1.3 *John Samuels Archaeological Consultants* was commissioned to carry out an archaeological watching brief during all below ground works for Plot 1. A specification was submitted to and approved by the County Archaeologist (*JSAC/165/96/01*) (see Appendix B). The watching brief was carried out with the objectives of establishing if any archaeological remains survived on the plot, and if so recording, identifying and determining their significance.
- 1.4 This watching brief was based on the requirements of *Planning Policy Guidance Note 16* (DoE 1990), selected elements from *Standards and Guidance for Archaeological Watching Briefs* (Institute of Field Archaeologists 1994) and current best archaeological practice.

2.0 PROCEDURE AND RESULTS OF THE WATCHING BRIEF

2.1 Procedure:

Ground works commenced and were completed on 20th November, 1996. The house foundation trenches had been excavated previously and become overgrown, these were cleaned out by a mechanical digger under archaeological supervision. Cleaning removed spoil that had fallen into the trenches as well as approximately 0.20m - 0.30m of natural deposits. Foundation trenches for a double garage, as well as drainage and service trenches were also excavated under archaeological supervision. The sides and bases of all excavated trenches were examined for the presence of archaeological features and the spoil removed from them was looked over for artifacts. Where potential features were observed the trench was cleaned by hand and examined.

2.2 Results:

- 2.2.1 The house foundation trenches were excavated to 0.80m in depth and 0.60m in width. Cleaning of the foundation trenches revealed 0.10m of subsoil over sub-angular limestone blocks which overlay limestone platelets. No features or artifacts of archaeological interest were present.
- 2.2.2 The foundation trenches for the double garage were excavated to a depth of 0.50m in depth, through 0.30m of topsoil and 0.10m of subsoil and 0.10m of natural limestone. No features or artifacts of archaeological interest were present.
- 2.2.3 No archaeological features were present in any of the drainage trenches, service trenches or pits for the soakaways.

3.0 CONCLUSIONS

- 3.1 Continual archaeological supervision of all ground works identified no evidence for any archaeological remains surviving on the plot.

4.0 FIGURES

1. Location of Sudbrooke, Lincolnshire.
2. Location of proposed development site.

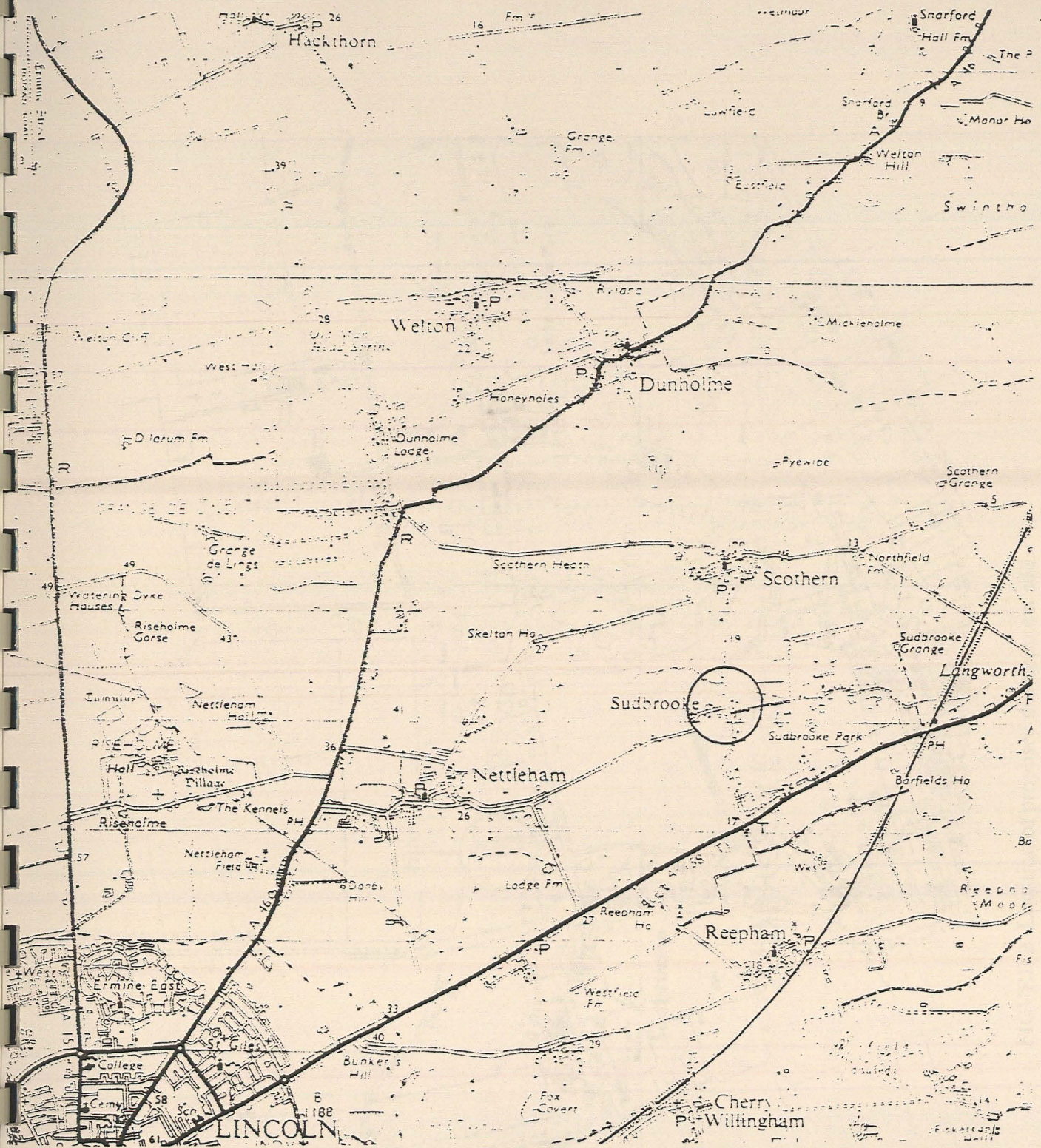


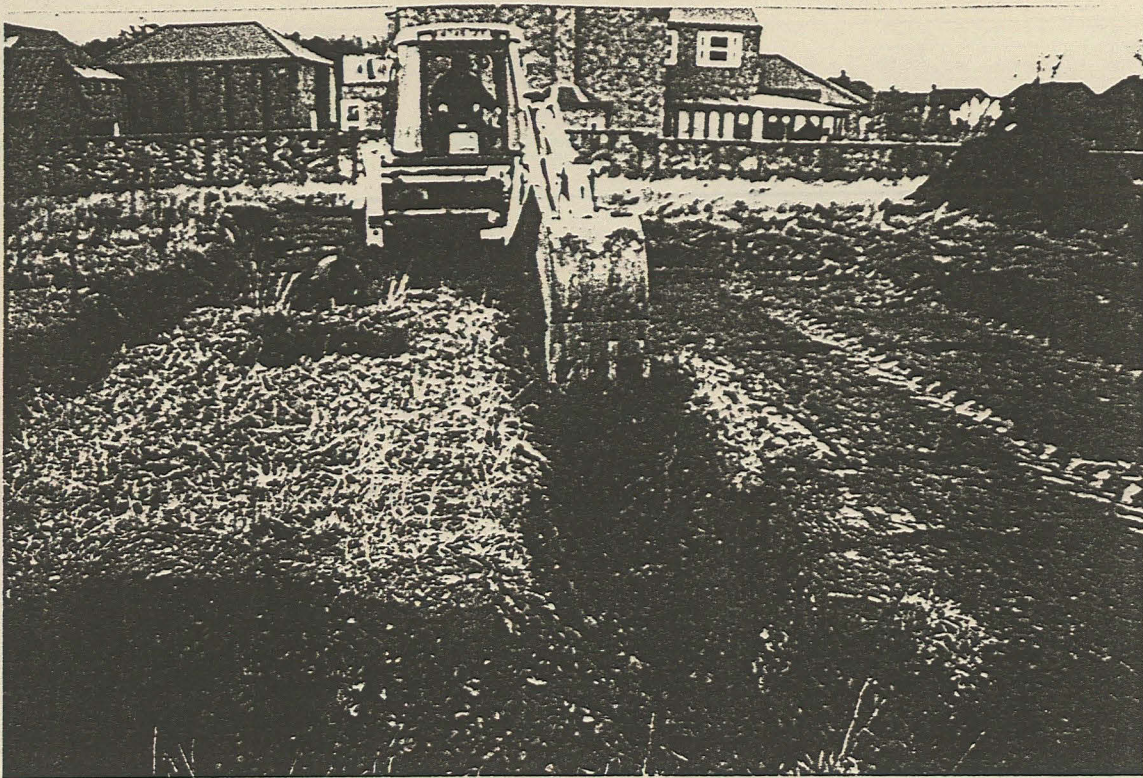
FIGURE 1: Location of Sudbrooke, Lincolnshire.

APPENDIX A: The Photographic Record

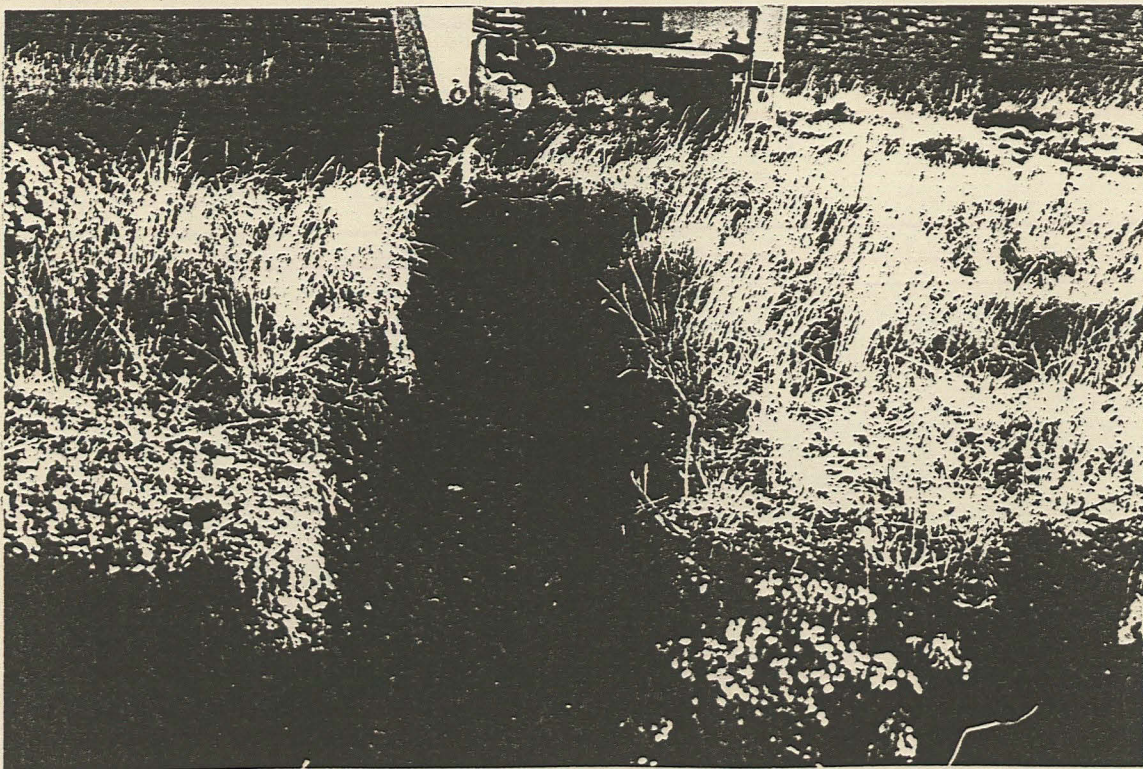
1. House foundation trenches prior to cleaning, looking south.
2. Machine cleaning of the house foundation trenches, looking east.
3. Cleaned house foundation trench, looking east.
4. Cleaned foundation trenches, looking west.
5. Cleaned foundation trenches, looking west.
6. Foundation trench for the garage, looking north.
7. Foundation trench for the garage, looking west.
8. Mechanical excavation of soakaway.
9. Soakaway, looking north west.
10. Topsoil stripping for access road



1. House foundation trenches prior to cleaning, looking south.



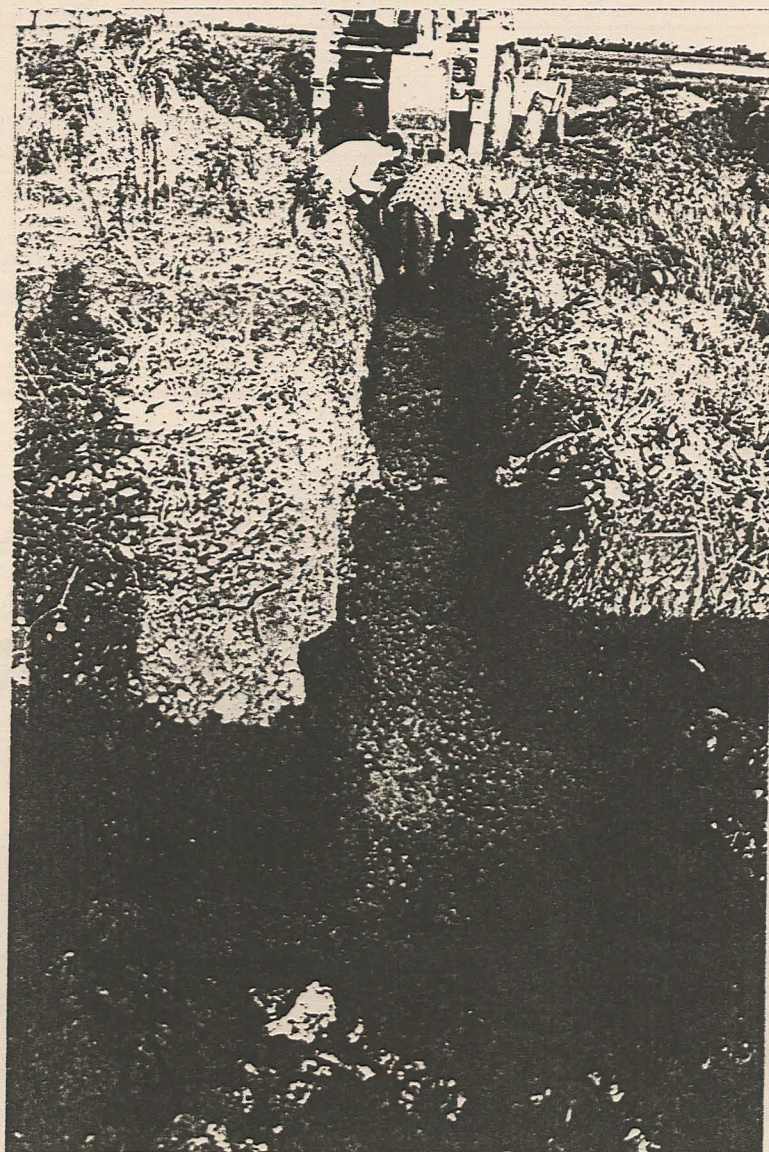
2. Machine cleaning of the house foundation trenches, looking east.



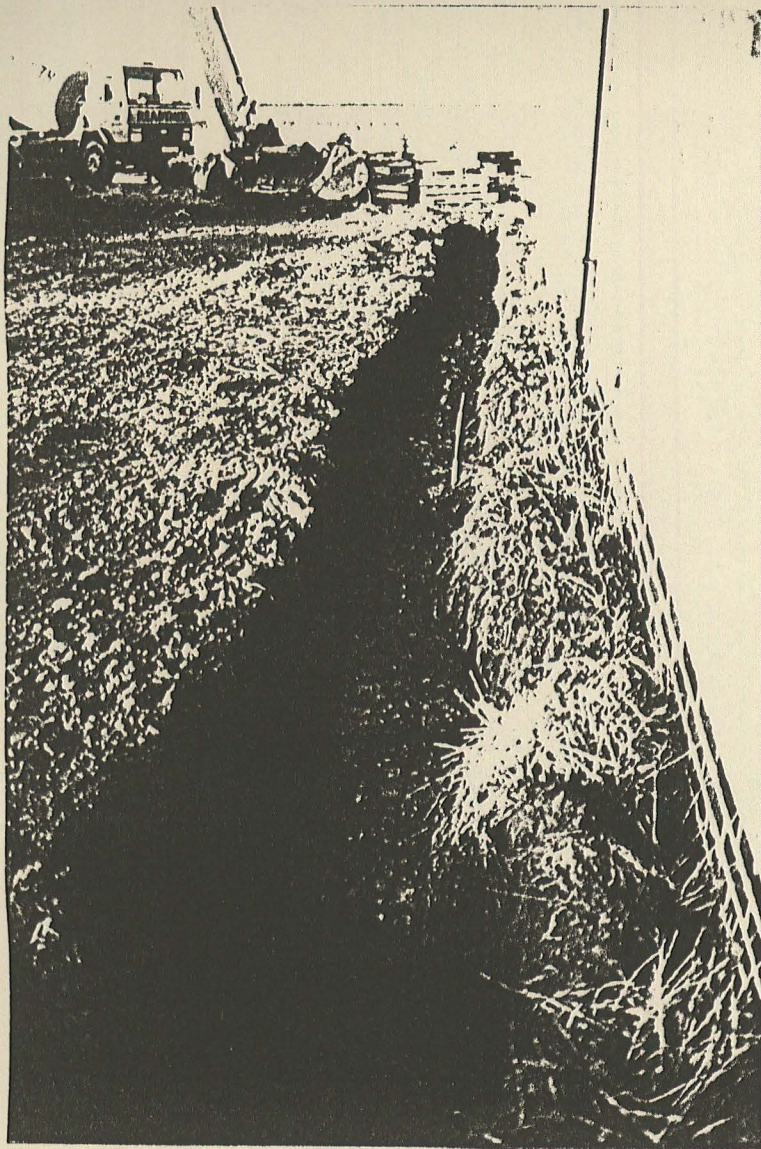
3. Cleaned house foundation trench, looking east.



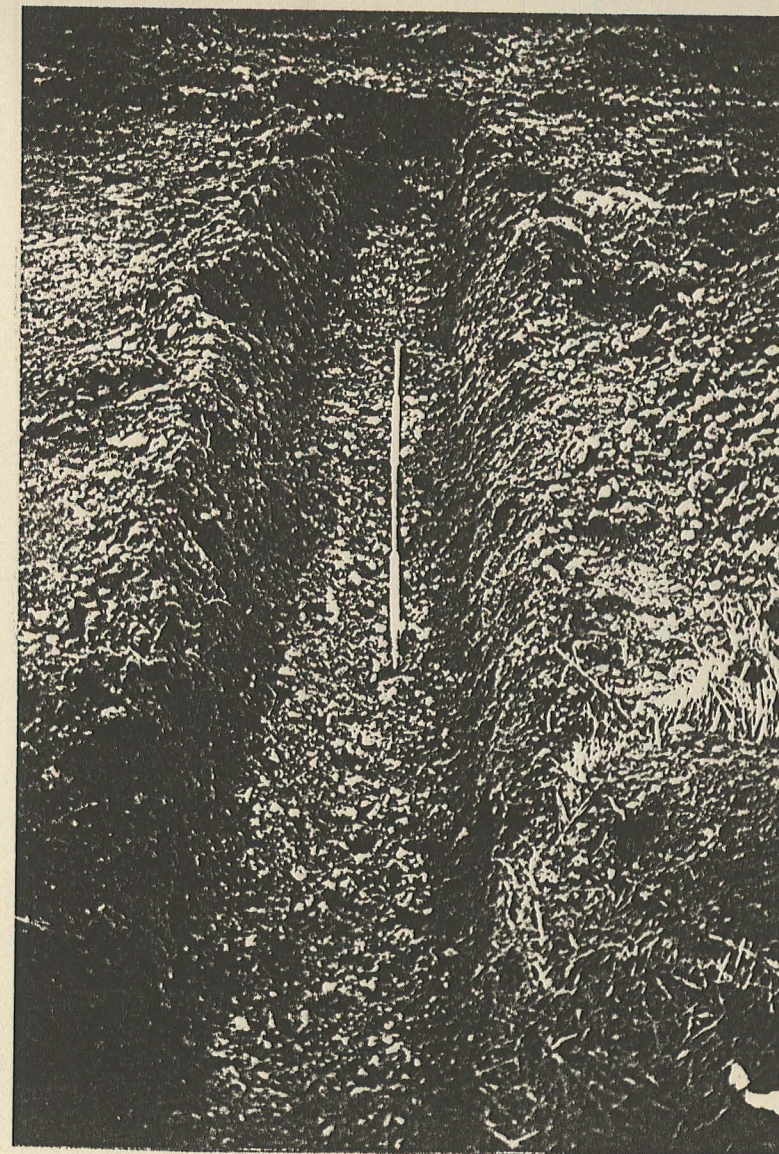
4. Cleaned foundation trenches, looking west.



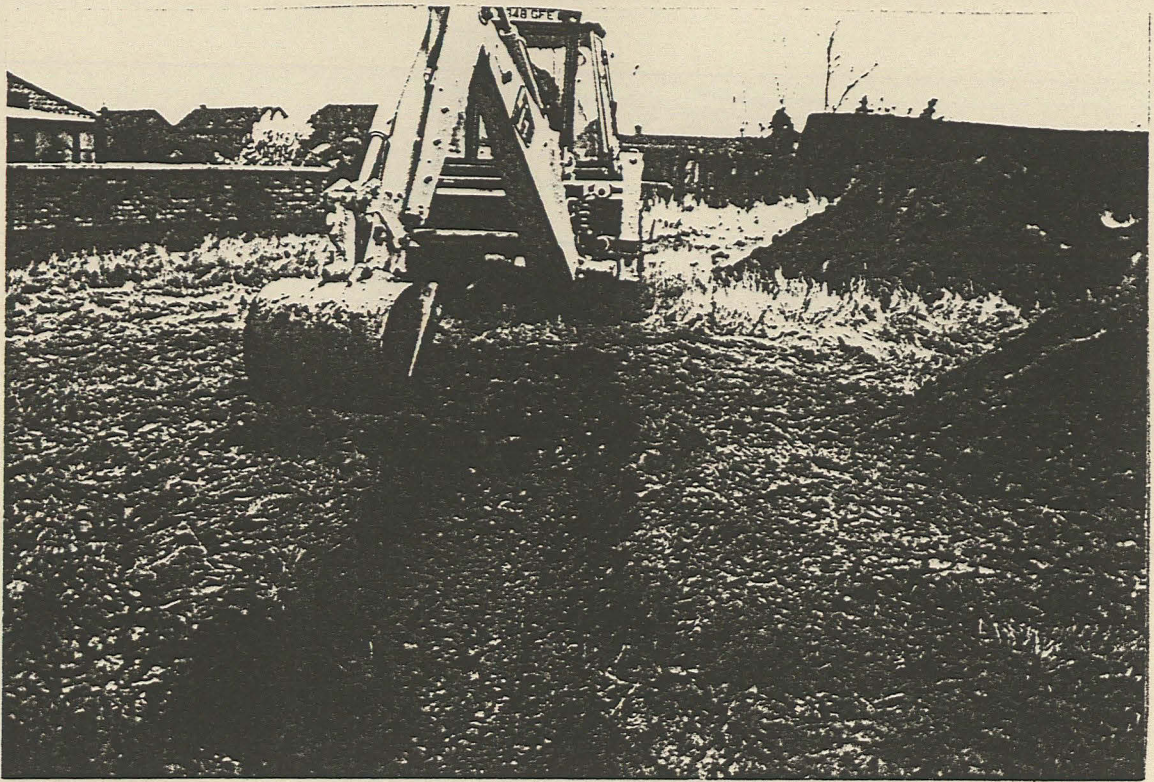
5. Cleaned foundation trenches, looking west.



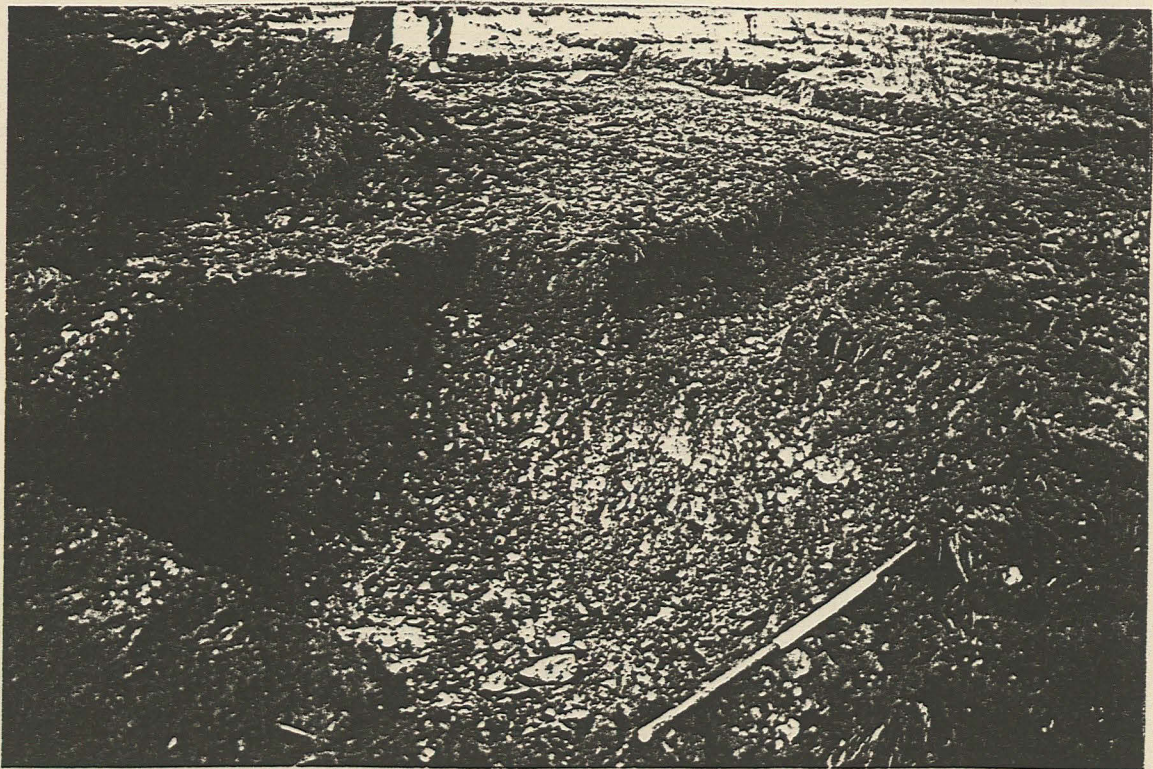
6. Foundation trench for the garage, looking north.



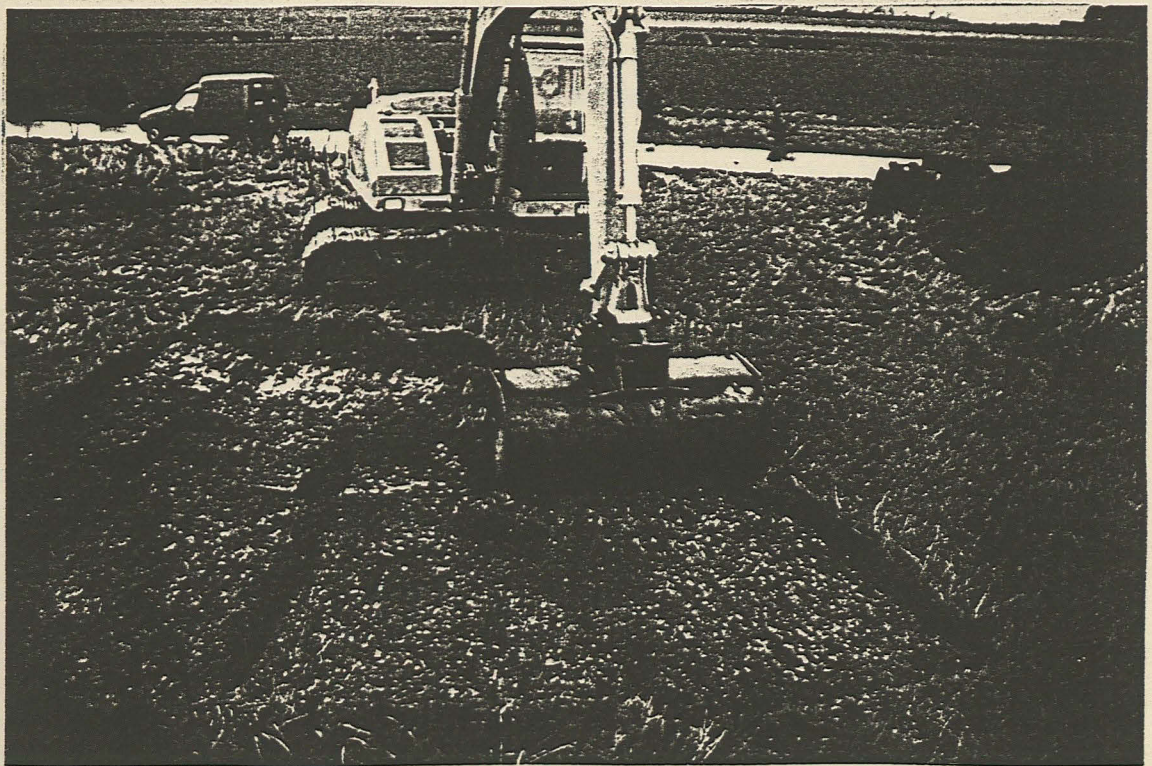
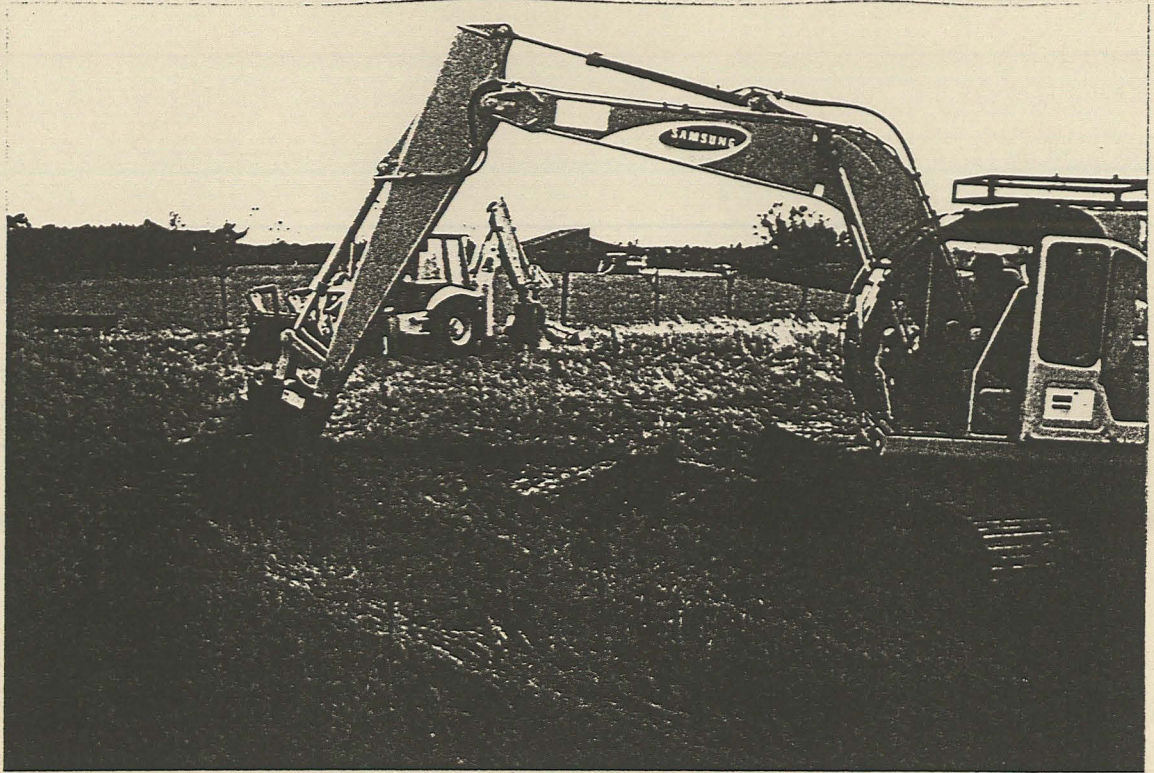
7. Foundation trench for the garage, looking west.



8. Mechanical excavation of soakaway.



9. Soakaway, looking north west.



10. Topsoil stripping for access road.

APPENDIX B: Copy of Specification

John Samuels Archaeological Consultants

*The Manor, South Street, Normanton on Trent, Newark, Nottinghamshire NG23 6RQ
Telephone 01636 821727 Fax 01636 822080*



PLOT 1, POACHERS LANE

SUDBROOKE

Near LINCOLN

LINCOLNSHIRE

SPECIFICATION

FOR AN

ARCHAEOLOGICAL WATCHING BRIEF

for

**Truelove Homes Ltd.
Kingerby Hall
Kingerby
Market Rasen
Lincolnshire
LN8 3PF**

Also at : Witham Park House, Waterside South, Lincoln LN5 7JP Telephone 01522 880050

JSAC 165/96/01

**PLOT 1, POACHERS LANE, SUDBROOKE
Near LINCOLN, LINCOLNSHIRE**

SPECIFICATION

FOR AN

ARCHAEOLOGICAL WATCHING BRIEF

CONTENTS

- 1. INTRODUCTION**
- 2. SPECIFICATION**
- 3. SITE LOCATION PLANS**

APPENDIX A: ARCHAEOLOGICAL PLANNING CONDITION

APPENDIX A: COUNTY ARCHAEOLOGISTS BRIEF

PLOT 1, POACHERS LANE, SUDBROOKE
Near LINCOLN, LINCOLNSHIRE

SPECIFICATION FOR AN
ARCHAEOLOGICAL WATCHING BRIEF

1. INTRODUCTION

- 1.1 This specification has been prepared by *John Samuels Archaeological Consultants* for Truelove Homes Ltd. It comprises a specification for an archaeological watching brief which is to be maintained during earthmoving operations for a residential development at Plot 1, Poachers Lane in the village of Sudbrooke, Lincolnshire, 7km. north east of Lincoln at National Grid Reference TF 0355 7625.
- 1.2 A planning application was submitted for residential development on the site (See figure 1 location plan).
- 1.3 The Local Planning Authority (LPA), West Linsey District Council, approved the application subject to conditions (Appendix A , below) which included, a requirement for an archaeological watching brief in accordance with a scheme to be approved by the LPA before development is commenced. In practice excavation commenced with this condition being discharged.
- 1.4 A specification for an archaeological watching brief has been supplied by the Archaeological Officer for Lincolnshire County Council (Appendix B, below).
- 1.4 Truelove Homes Ltd responded to the concern on the part of LPA for archaeological provision by commissioning *John Samuels Archaeological Consultants* to prepare a watching brief specification.
- 1.5 The specification is designed to fulfil the archaeological planning condition. It is based on the requirements of *Planning Policy Guidance 16 (DoE 1990)*, the *IFA Code of Conduct (Institute of Field Archaeologists 1985)*, and current best archaeological practice. It takes account of *Standard and Guidance for Archaeological Watching Briefs* and *Standards and Guidance for Archaeological Field Evaluations* (Institute of Field Archaeologists, 1993).

SPECIFICATION

- 2.0 The watching brief will be undertaken with the specific objectives of establishing whether archaeological remains survive on the development site, and if so, recording, identifying, and determining their significance.
- 2.1 In practice , and in liaison with the developers, the watching brief will take the form of supervision by suitably qualified professional archaeologists to monitor all groundworks as they commence and proceed.
- 2.2 Adequate facilities shall be provided for archaeological staff to observe earthmoving operations in progress; and where structures, soil features, or finds of archaeological interest are exposed or disturbed, to examine, clean, assess, and if appropriate to manually excavate, sample and record by photography and measured drawings, in accordance with the Lincolnshire County Council's Archaeological Officers watching brief specification (Appendix B below).
- 2.3 Should surviving archaeological remains be identified, it may be necessary in liaison with the Archaeological Officer for Lincolnshire County Council to formulate a strategy designed to fully establish their character, distribution, extent, condition, dating and further treatment.
- 2.4 Any artifacts of antiquity shall, after analysis and recording, be returned to the land owner. This excludes items of gold and silver which by law must be reported to Her Majesty's Coroner. A comprehensive record, including drawings and photographs, of any artifacts which the land owner retains will be compiled and provision for this record to be deposited with a suitable curatorial body, approved by the County Archaeological Officer.
- 2.5 Within three months of the completion of the excavation works, a summary report shall be submitted to the LPA and the results of the watching brief shall also be made available to the Lincolnshire County Sites and Monuments Record (SMR).
- 2.6 Every effort will be made to implement the watching brief without affecting the construction timetable.
- 2.7 Archaeological staff will respect standard Health and Safety provisions and site safety regulations.