

JB

M2/35

M & M ARCHAEOLOGICAL SERVICES

The Old Coach House, Cross Gate, Church End, Donington, Lincolnshire PE11 4SQ
Tel: 01775 822759 Fax: 01775 822025 Email: magriff@talk21.com

**A PHOTOGRAPHIC RECORDING OF THE SHIP INN, SURFLEET SEAS
END, SPALDING, LINCOLNSHIRE
NGR TF 2810 2940**

**PLANNING APPLICATION REFERENCE:
HI7/0585/02**



Commissioned by:

M. Parker & Sons.
St Johns Road,
Spalding
Lincolnshire.
PE11 1JX

**Site Code: TSIS02
Accession No.: LCNCC 2002.443**

October 2002

Conservation
Services

29 OCT 2002

Highways & Planning
Directorate

Con L17954

Mon L187121 23938
Event L15709
Source L19855 L19856

M & M ARCHAEOLOGICAL SERVICES

The Old Coach House, Cross Gate, Church End, Donington, Lincolnshire PE11 4SQ
Tel: 01775 822759 Fax: 01775 822025 Email: magriff@talk21.com

**A PHOTOGRAPHIC RECORDING OF THE SHIP INN, SURFLEET SEAS
END, SPALDING, LINCOLNSHIRE
NGR TF 2810 2940**

PLANNING APPLICATION REFERENCE:

H17/0585/02

Commissioned by:

M. Parker & Sons.
St Johns Road,
Spalding
Lincolnshire.
PE11 1JX

Site Code: TSIS02
Accession No.: LCNCC 2002.443

October 2002

A PHOTOGRAPHIC RECORDING OF THE SHIP INN, SURFLEET SEAS END, SPALDING,
LINCOLNSHIRE

CONTENTS

SUMMARY	3
2.0 SITE LOCATION AND DESCRIPTION	3
3.0 PLANNING BACKGROUND	3
4.0 HISTORICAL BACKGROUND	4
5.0 AIMS	4
6.0 METHODOLOGY & RESULTS	5
7.0 DISCUSSION	6
8.0 FIGURES	7
9.0 PLATES	8
10.0 BIBLIOGRAPHY	9

SUMMARY

- 1.1 *M. Parker & Sons have been granted planning consent to develop the Ship Inn, Surfleet Seas End, Spalding, Lincolnshire (NGR TF 2810 2940). A planning application has been submitted to South Holland District Council (Planning Application Ref. H17/0585/02).*
- 1.2 *The Conservation Services Dept. (Lincolnshire County Council) acting as advisor to South Holland District Council requested a minimal photographic record of the present building to be undertaken. This recording was undertaken using 35mm film in colour print, and supplemented by black and white and colour slide as necessary. Digital photographs were also taken.*
- 1.3 *The photographic recording was undertaken according to the specification prepared and submitted to the Local Planning Authority and within nationally recognised archaeological guidelines.*
- 1.4 *The majority of the internal features and fittings of the pub were found to be recent alterations to the building and it is unlikely that they are more than 40 years old. Use has been made of fake plastic beams covering steel RSJ's on the ground floor. Brick columns have been used to provide open space in the dining room through to the bar area. These columns support an old timber beam which is probably not in its original position. A polystyrene ceiling rose is recorded in the upstairs lounge.*
- 1.5 *The internal walls both upstairs and down have been extensively altered and either removed or replaced to resemble period designs. Most upstairs walls along the landing are of plasterboard and wooden construction in the Elizabethan manner.*

2.0 SITE LOCATION AND DESCRIPTION

- 2.1 *Surfleet Seas End is located 8km north of Spalding in the administrative district of South Holland. The site is located to the east of the village of Surfleet Seas End on Surfleet Bank. The development site is currently occupied by The Ship Inn and car park (see Figure 1).*
- 2.2 *The development area is centred on NGR TF 2810 2940 and lies at an altitude of 7m AOD. The underlying drift geology is alluvium (BGS Sheet 144 – Spalding 1:50, 000 Series 1992).*

3.0 PLANNING BACKGROUND

- 3.1 *M. Parker & Sons Ltd. have made a planning application to South Holland District Council (SHDC) for the development/renovation of The Ship Inn (Planning application reference: H17/0585/02). In response to this application, Conservation Services, LCC acting as advisor to SHDC*

requested that a photographic record was undertaken prior to partial demolition/renovation.

- 3.2 A specification detailing the methodology to be maintained during the photographic record was submitted to the Local Planning Authority. The recording was undertaken in accordance with that document and current best archaeological practices and the appropriate national standards and guidance including:

Management of Archaeological Projects (English Heritage 1991);
Code of Conduct (Institute of Field Archaeologists 1999);
The Lincolnshire Archaeological Handbook (Lincolnshire County Council 1998)

4.0 HISTORICAL BACKGROUND

- 4.1 The Ship Inn is not a Listed Building and therefore does not have statutory protection. It is however, considered to be of local historical interest. It lies at the confluence of Vernatt's Drain, the River Welland and the River Glen.
- 4.2 Vernatt's Drain is named after Philibert Vernatti, a Dutchman employed to drain the fens by the Adventurers (Elsden 2000). Local people were generally against the drainage of the fens and refused to be employed during such works. Imported labour was therefore relied upon.
- 4.3 The Ship Inn is thought to have been built around 1642 at a time when Scottish and Irish prisoners of war and Dutch labourers were working on the drainage of the fens (Collier 1998). However, a map of the Deeping Fen surveyed in 1676, does not illustrate the Ship Inn (see Figure 6).
- 4.4 The Ship Inn was owned by the Deeping Fen, Pinchbeck and Spalding Internal Drainage Board until it was sold in 1970. Watney Mann the brewers held the lease up until then. It was one of very few pubs which were owned by a drainage board.
- 4.5 Lincoln Archives were consulted for historical records including maps and deeds. However, no records relating directly to the Ship Inn were encountered.

5.0 AIMS

The aim of the recording was to:

- a) make a photographic record of the building prior to renovation or demolition;
- b) to produce a report detailing the historic background of the building and its immediate historic environs

6.0 METHODOLOGY & RESULTS

- 6.1 A photographic record was made of all external and internal elevations using 35mm format colour film with appropriate scales. Any items of particular architectural interest were also photographed in black & white and on colour slide. Use was made of digital imagery and the final report deposited in the Lincolnshire Sites and Monuments Record will include a compact disk for the archival records. Digital photographs were duplicated on film.
- 6.2 On the day of the photography the weather was fine and bright. However, lighting within the building was not good for photography and a flash gun was used for most shots. Jessops 200 ASA colour film was used for colour prints, Ilford FP4 125 ASA black & white film and Fuji Sensia 200 ASA slide film. The majority of shots were taken using a tripod. All 35mm shots were taken using Pentax K1000 SLR cameras. A Fuji 601 6 megapixel camera was used for digital shots. Due to poor lighting conditions inside the building, some digital enhancement was used to improve the digital images using Adobe Photoshop 5.5.

Exterior of the Ship Inn (Plates 1-13)

- 6.3 The Ship Inn consists of part single and part two storey brick built building. The brickwork is English Bond with a certain amount of repair work. It is impossible to establish if this construction design occurred throughout the building, as half the building is rendered or masked by modern additions. The external walls of the property on the frontage and east side are rendered. The whole of the property is painted white, most of which has weathered.
- 6.4 The roof of the original body of the building is pitched with concrete interlocking tiles. Later additions have flat felted roofs. The flat roofed extensions to the side and rear are later additions, probably constructed in the 1950-60's.
- 6.5 The pitched roof itself has been replaced in the last century. This assumption is based on the condition of the roof timbers and type of tile used. It is considered that the original roof may well have been slightly steeper and pantiled to match the barn / store at the side.

Interior of the Ship Inn (Plates 15-19 & Figures 4 & 5)

- 6.6 Clearly as is the custom in public houses, there have been many alterations and adjustments to the internal arrangements of the property to comply with Environmental Health, Fire and Licensing Acts. Consequently there is little if any evidence of historic nature left within the building. There is a re-used wooden beam running across the width of the dining area and is held in place by a brick stanchion (Plate 14). It is considered unlikely that the beam is contemporary with the original building.

- 6.7 An attempt has been made to recreate the interior in the style of the Elizabethan Era with much of the panelling on the first floor painted in black and white (Plate 15). The walls are of plasterboard construction with pine timber used for the framework. A ceiling rose in the upstairs lounge was found to be polystyrene on examination (Plate 16). Bedroom 4 shows extensive water damage from the flat roof to the west and front of the building.
- 6.8 Examination of the roof space revealed that the roof timbers had been replaced during re-roofing of the building (Plate 14). It was not possible to examine the roof space above Bedroom 4 due to the presence of a large wasps nest. Bedrooms 3 & 4 are located within the modern extensions, as are the bar lounge and toilets.
- 6.9 Many of the building windows are metal in construction and were probably replaced when the building was modernised. These are now in poor condition and badly rusted (see external shots). A bay window has been inserted on the ground floor since production of the 1903 Ordnance Survey 25 inch map.
- 6.10 All the fireplaces on the ground floor are fairly modern and again were probably replaced during the earlier renovations (Plate 18).
- 6.11 In the bar, a floor of polished stone flagstones were recorded (Plate 19). It is understood that these may be retained during the proposed refurbishment.

7.0 DISCUSSION

- 7.1 The Ship Inn is thought to have been constructed in 1642AD at a time when the Fens of Lincolnshire were being drained. However, the earliest map consulted dated to 1676 and does not show the Ship Inn.
- 7.2 The building has been extensively modernised in the 1950-1960s with external extensions. No features of architectural interest were encountered in the interior of the building. The interior has been modernised and no original fireplaces remain.
- 7.3 Due to the extensive internal alterations, it is considered that the interior of the building offers a negligible potential for the discovery of further features of architectural interest. The replacement of the roof and timbers, window frames, the modern fireplaces, the removal of original internal walls have removed any vestiges of the original internal structure and character of the building.
- 7.4 The original external body structure still exists and has been photographed fully as required. The brick construction and design is typical of buildings of this period. External additions have been made during the last century.

8.0 FIGURES

Figure 1. Site Location Plan.

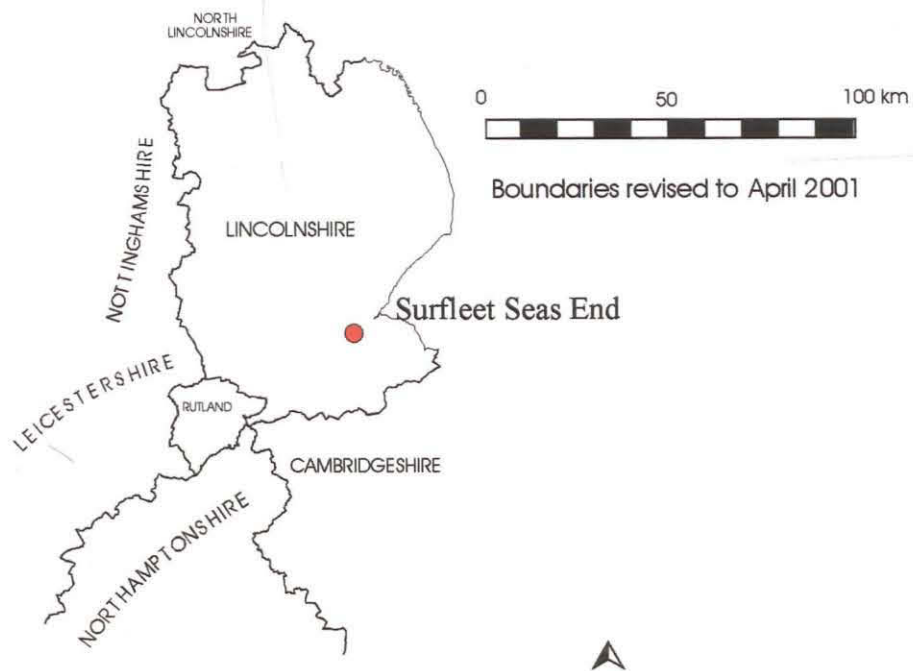
Figure 2. Site Development Plan.

Figure 3. Tracing of 1886 O.S. 25inch map (revised 1903)

Figure 4. First floor plan.

Figure 5. Ground floor plan.

Figure 6. A map of Deeping Fen surveyed 1676 -redrawn 1763 (taken from
Elsden 2000) .



Map based on Ordnance Survey with the sanction of the
 Controller of H.M. Stationary Office,
 Crown Copyright Reserved.
 Licence Number AL 100035919

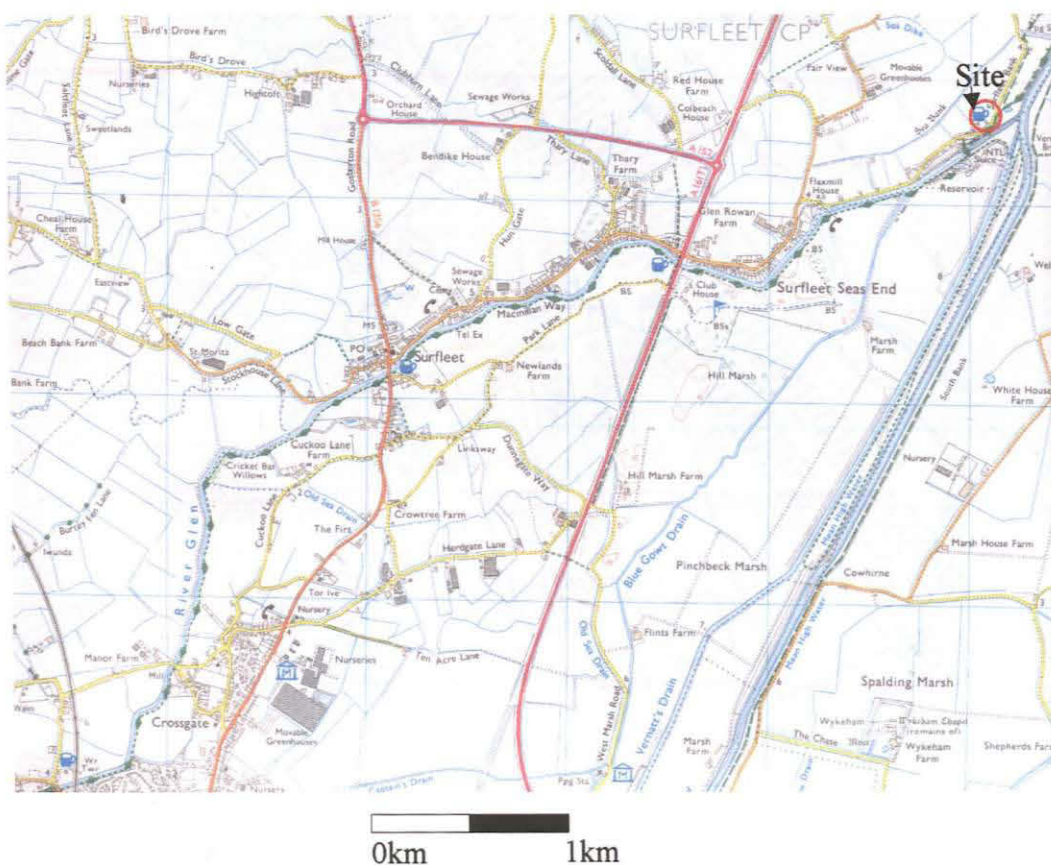


Figure 1. Site location

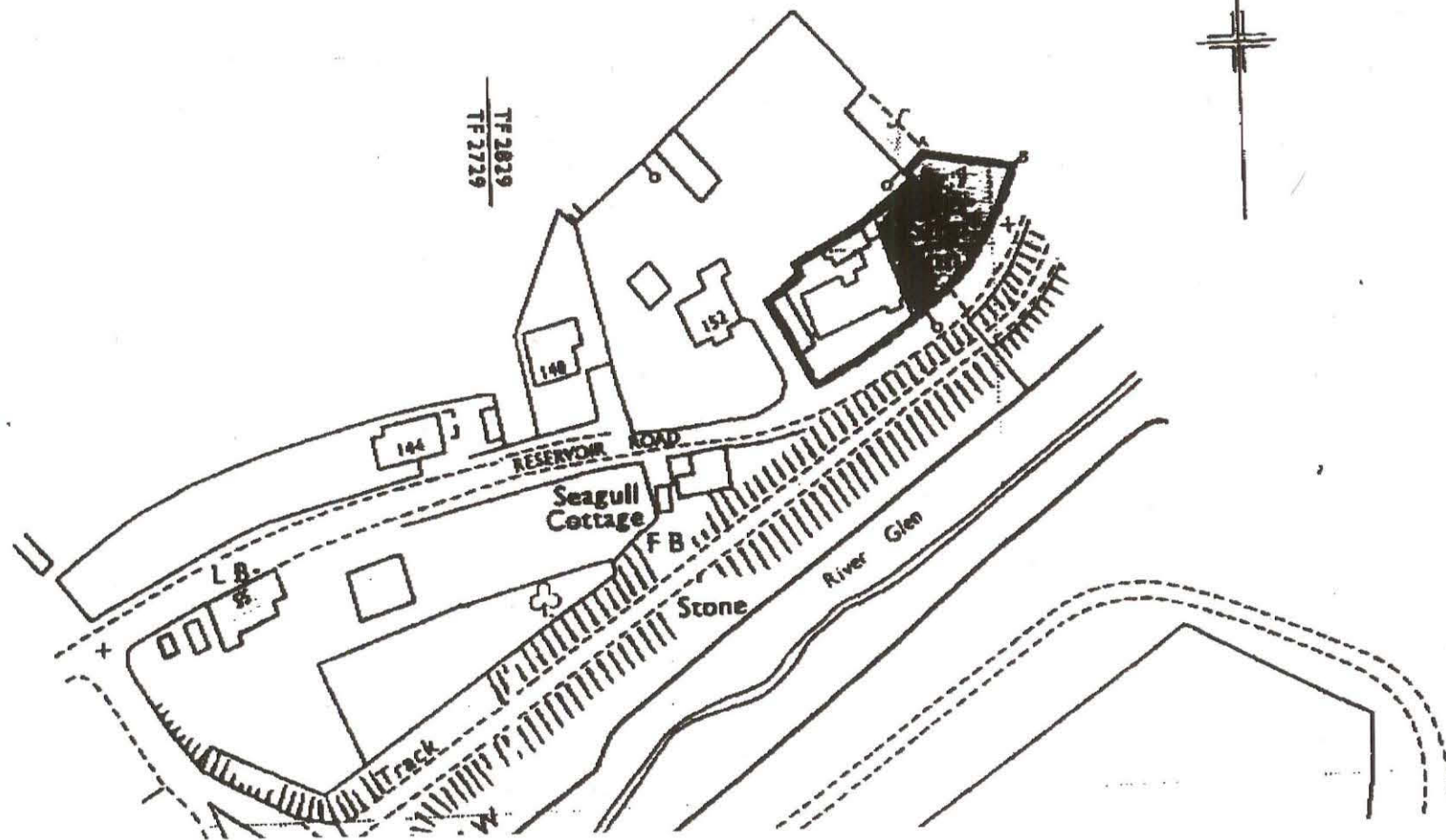
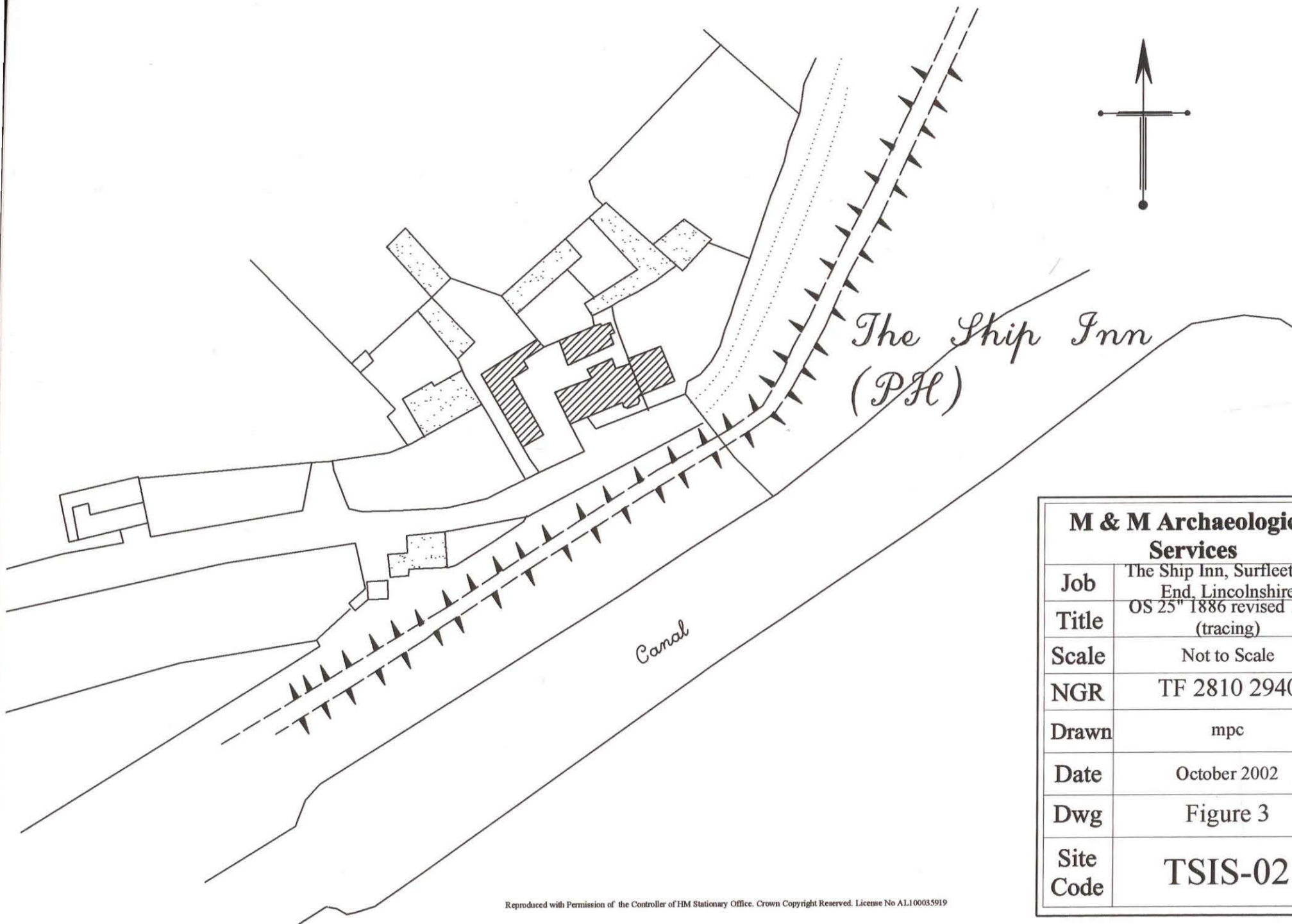


Figure 2. Site development plan



M & M Archaeological Services

Job	The Ship Inn, Surfleet Seas End, Lincolnshire
Title	OS 25" 1886 revised 1903 (tracing)
Scale	Not to Scale
NGR	TF 2810 2940
Drawn	mpc
Date	October 2002
Dwg	Figure 3
Site Code	TSIS-02



First Floor Plan



M & M Archaeological Services	
Job	The Ship Inn, Surfleet Seas End, Lincolnshire
Title	Sketch Plans Showing Photographic Plates
Scale	As Drawn (sketch)
NGR	TF 2810 2940
Drawn	mpc
Date	October 2002
Dwg	Figure 4
Site Code	TSIS-02

○▶ Plate No. & Direction of shot



M & M Archaeological Services	
Job	The Ship Inn, Surfleet Seas End, Lincolnshire
Title	Sketch Plans Showing Photographic Plates
Scale	As Drawn (sketch)
NGR	TF 2810 2940
Drawn	mpc
Date	October 2002
Dwg	Figure 5
Site Code	TSIS-02

○ ▸ Plate No. & Direction of shot

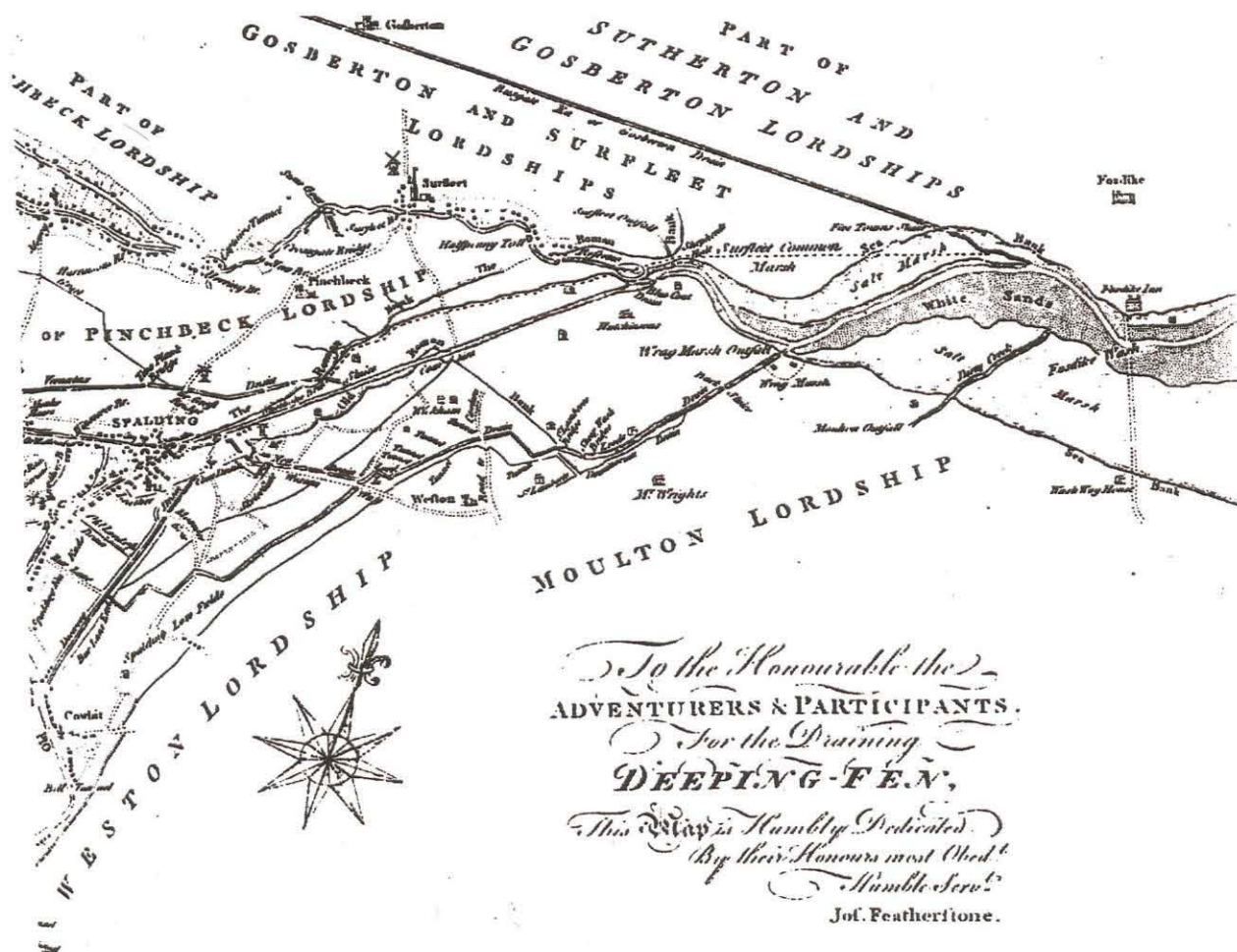


Figure 6. Map of Deeping Fen surveyed 1676 - redrawn 1763 (taken from Elsden 2000).

9.0 PLATES

Exterior shots.

Plate 1. The Ship Inn looking north.

Plate 2. Looking south east showing kitchen extension.

Plate 3. Barn looking southwest

Plate 4. Showing replaced modern roof timbers in barn

Plate 5. Showing modern extension in relation to barn looking north west.

Plate 6. Looking west showing faded Ship Inn sign painted on wall.

Plate 7. Showing upper extension for bedroom 3 and bathroom.

Plate 8. Showing modern extension to west side of building (Bedroom 4 to front).

Plate 9. Showing rear of original building looking south east, bedroom 3 to right part of new extension in 1950's.

Plate 10. Looking south east showing original rear of Ship Inn with new kitchen extension to left of picture. Bedroom 1 window above kitchen.

Plate 11. Looking south showing rear kitchen extension below bedroom 1.

Plate 12. Part of remaining wall to rear of building, all that remains of earlier out building.

Plate 13. The Ship Inn sign.

Internal shots.

Plate 14. Showing beam in dining area

Plate 15. Showing fake panelling in dining area

Plate 16. Showing polystyrene ceiling rose in upstairs lounge

Plate 17. Replaced roof timbers

Plate 18. Showing replaced fireplace in bar area

Plate 19. Showing polished flagstones in bar area



Plate 1. The Ship Inn looking north.



Plate 2. Looking south east showing kitchen extension.



Plate 3. Barn looking south west.



Plate 4. Showing replaced modern roof timbers in barn.



Plate 5. Showing modern extension in relation to barn looking north west.



Plate 6. Looking west showing faded Ship Inn sign painted on wall.



Plate 7. Showing upper extension for bedroom 3 and bathroom.



Plate 8. Showing modern extension to west side of building (Bedroom 4 to front).



Plate 9. Showing rear of original building looking south east, bedroom 3 to right part of new extension in 1950's.



Plate 10. Looking south east showing original rear of Ship Inn with new kitchen extension to left of picture. Bedroom 1 window above kitchen



Plate 11. Looking south showing rear kitchen extension below bedroom 1.



Plate 12. Part of remaining wall to rear of building, all that remains of earlier out building.



Plate 13. The Ship Inn sign.



Plate 14. Showing beam in dining area.

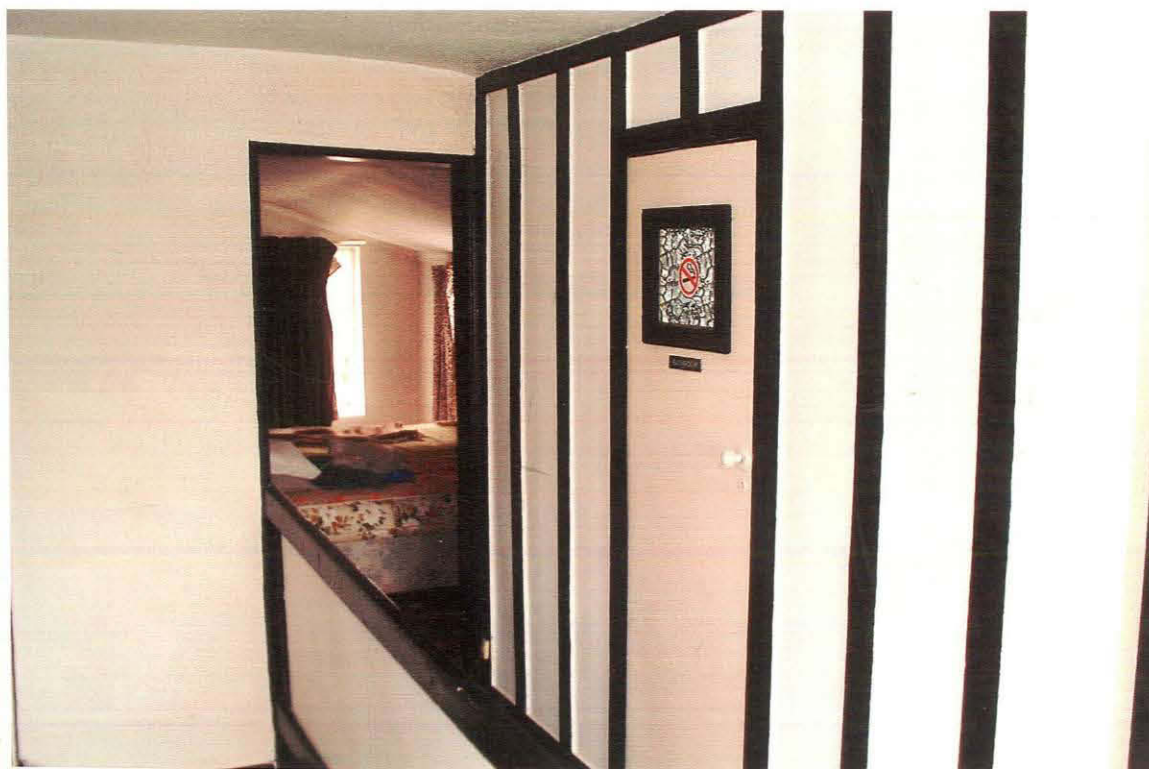


Plate 15. Showing fake panelling on 1st floor landing.



Plate 16. Showing polystyrene ceiling rose in upstairs lounge.



Plate 17. Replaced roof timbers.



Plate 18. Showing replaced fireplace in bar area.



Plate 19. Showing polished flagstones in bar area.

10.0 BIBLIOGRAPHY

- Collier, B. (1998). *Village Walks in Lincolnshire*. Countryside Books, Newbury, Berkshire.
- Elsden, M. J. (2000). *Aspects of Spalding Villages*. Bookmark, Spalding.

