

**Photographic Record of  
Louth Town Hall  
prior to formation of new  
Customer Service Centre**

02-09-2004



Conservation  
Services

07 SEP 2004

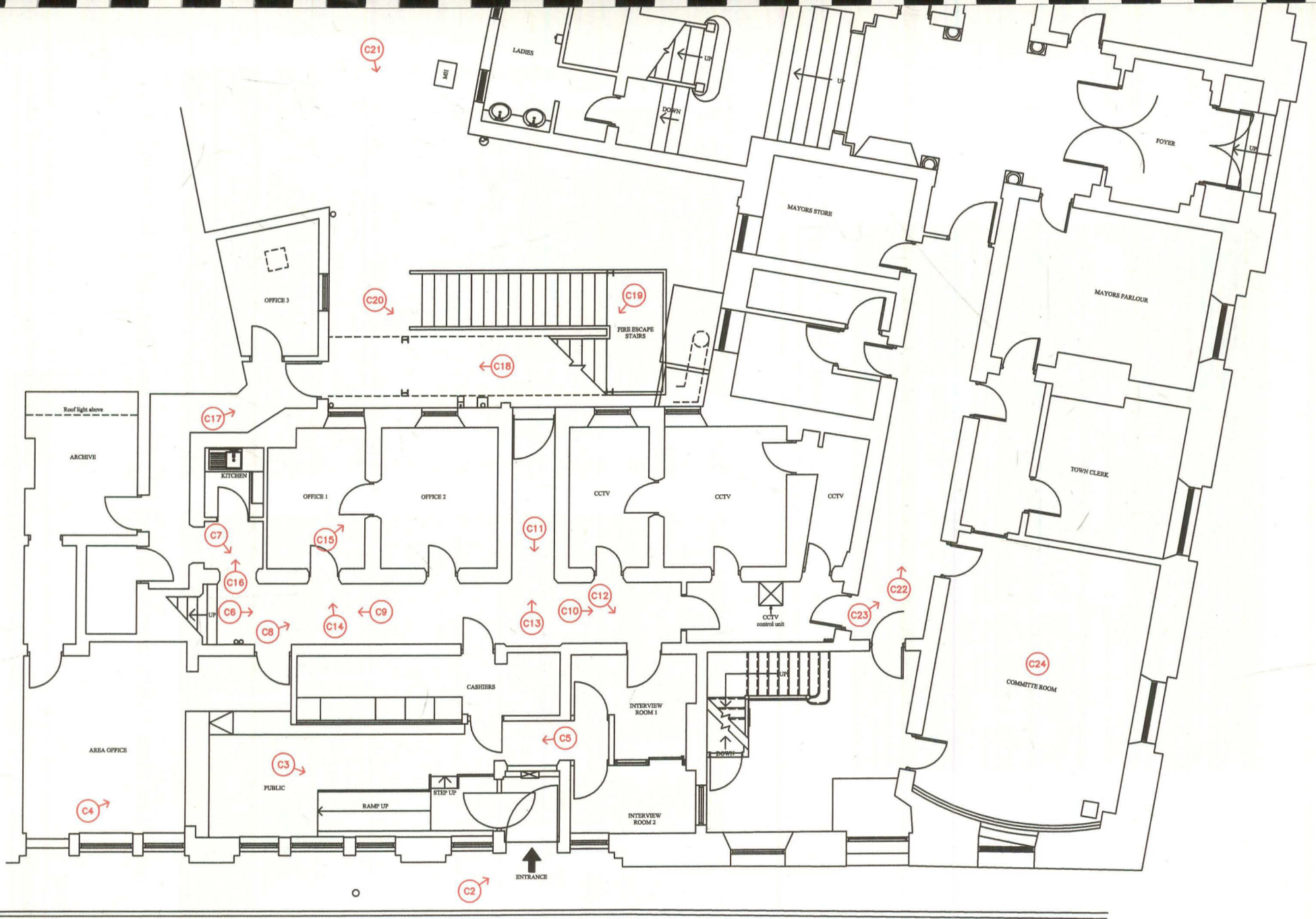
Highways & Planning  
Directorate

Event 45358

Source 419608

Mon 486707

45624

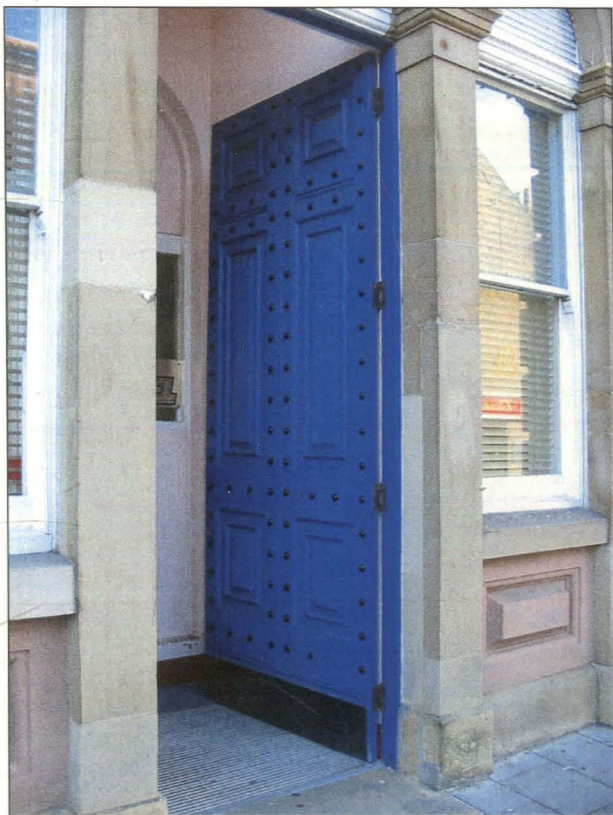


NOT TO SCALE





No. 1 - Cannon Street Entrance



No. 2 - Cannon Street Entrance Door



No. 3 - Ramped access within Area Office



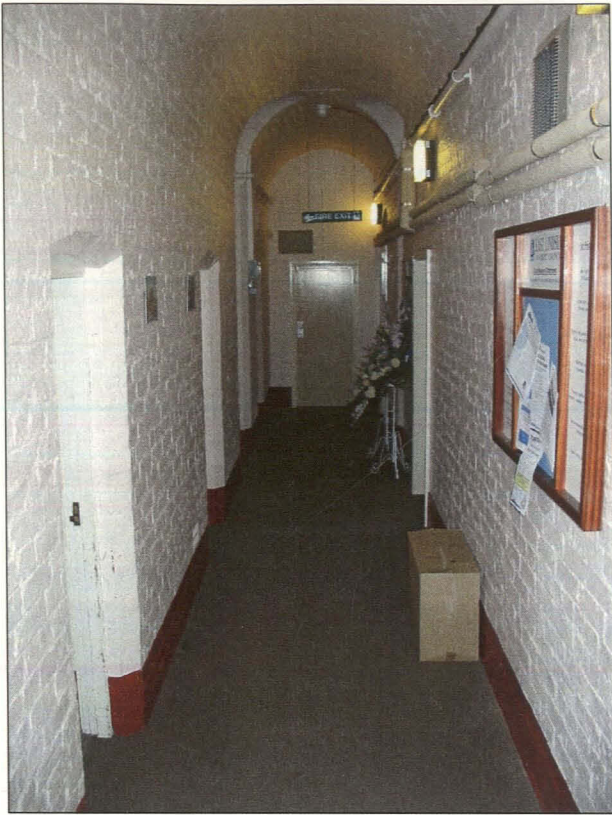


No. 4 - Area Office (viewed from staff area)

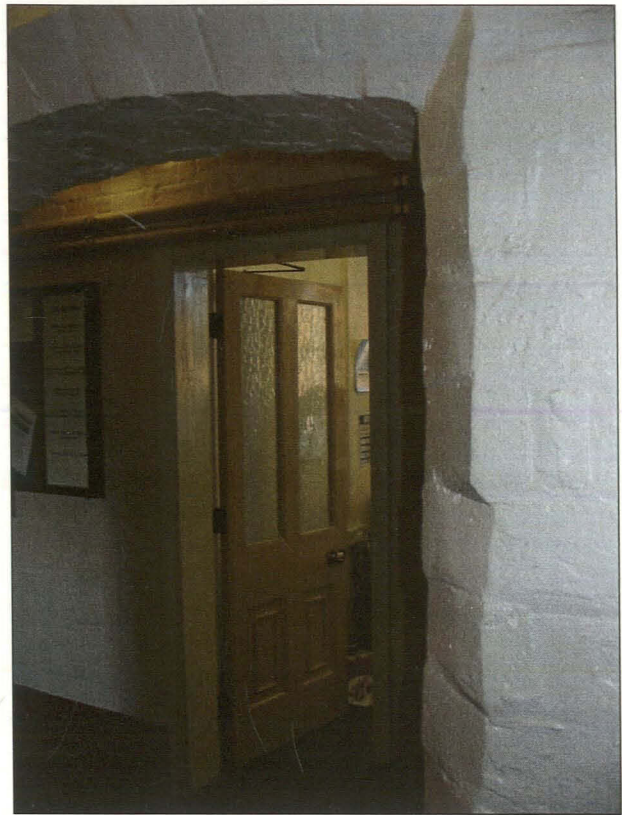


No. 5 - Area Office (viewed from cashiers counter)





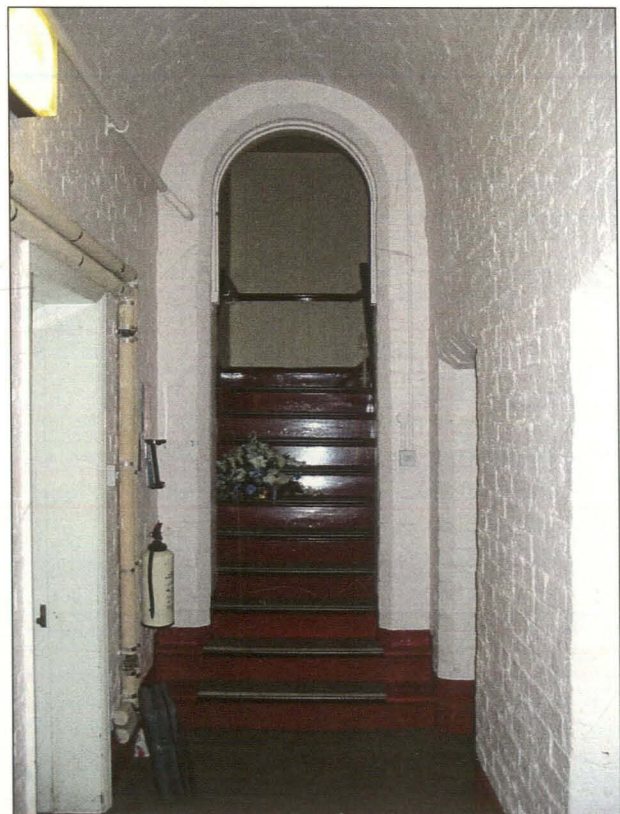
No. 6 - Corridor



No. 7 - Corridor

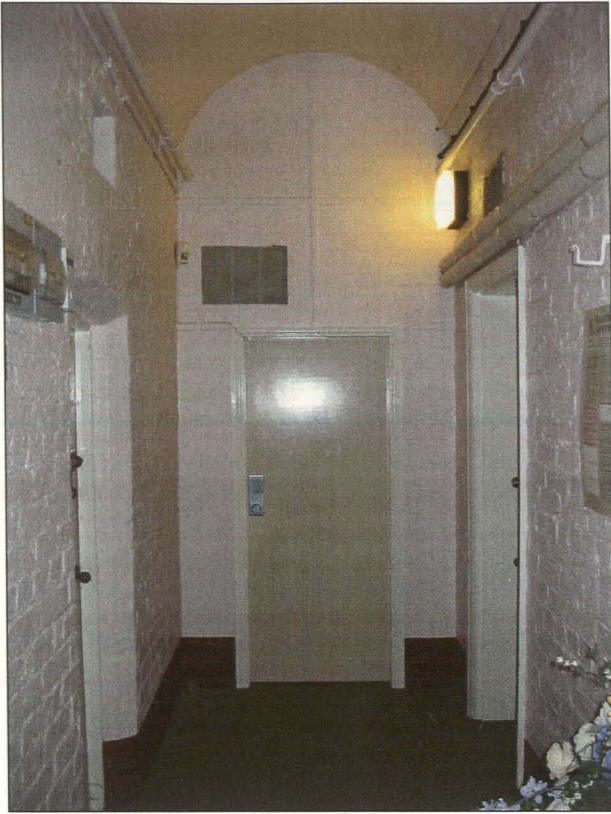


No. 8 - Corridor



No. 9 - Corridor





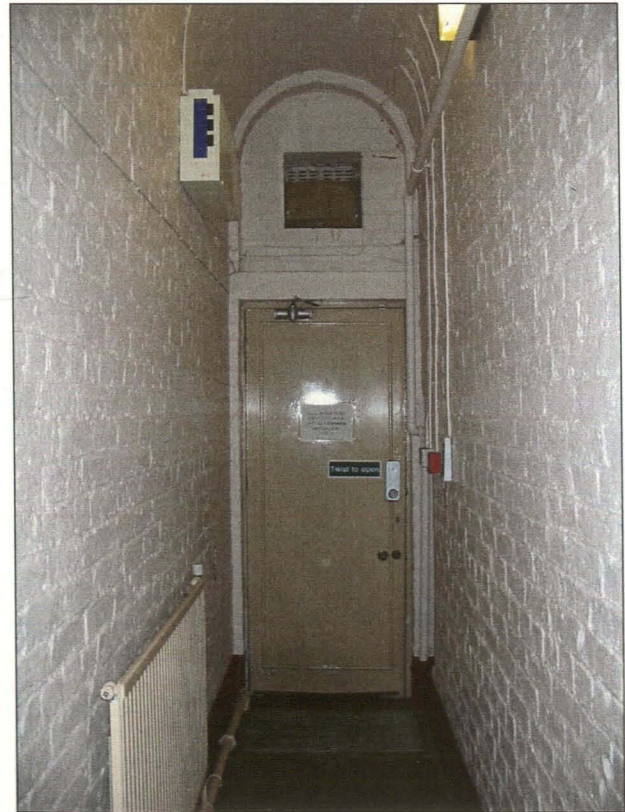
No. 10 - Corridor



No. 11 - Corridor



No. 12 - Corridor



No. 13 - Corridor

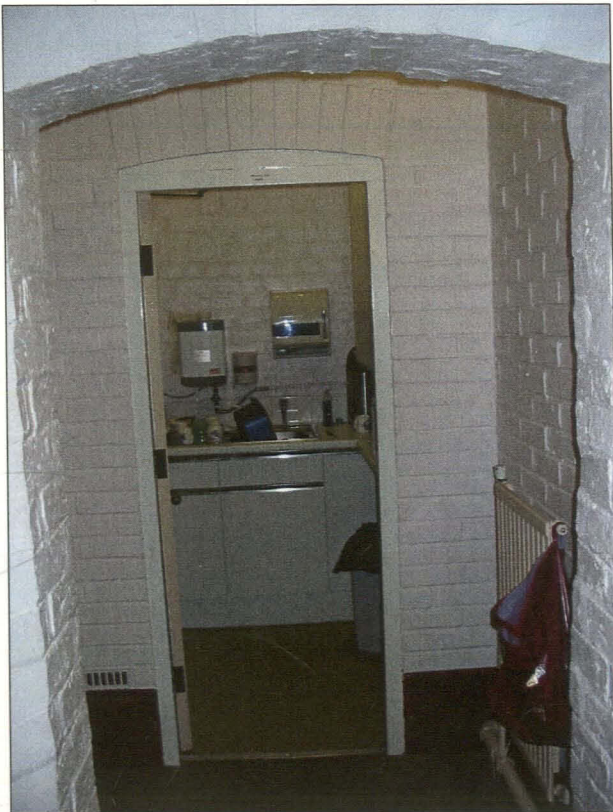




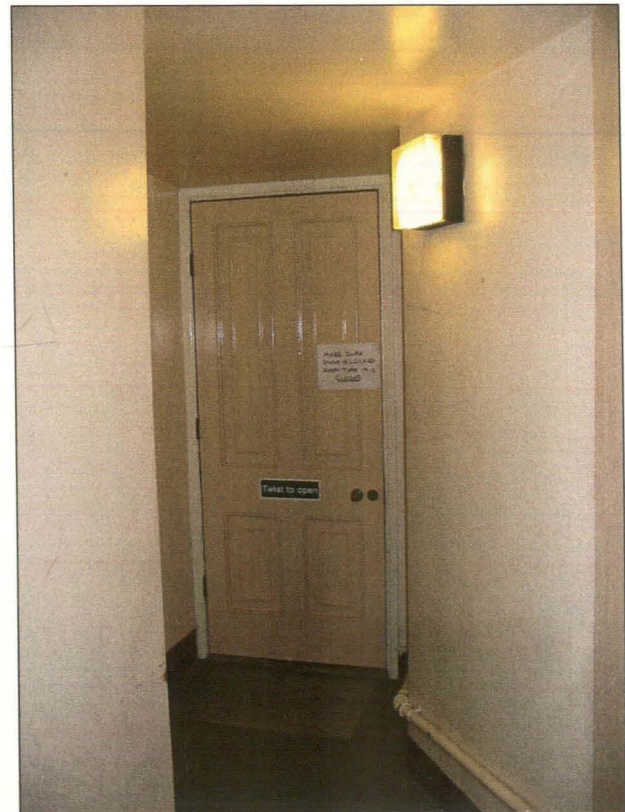
No. 14 - Corridor (cell door)



No. 15 - Link door between cells



No. 16 - Corridor (Kitchen)

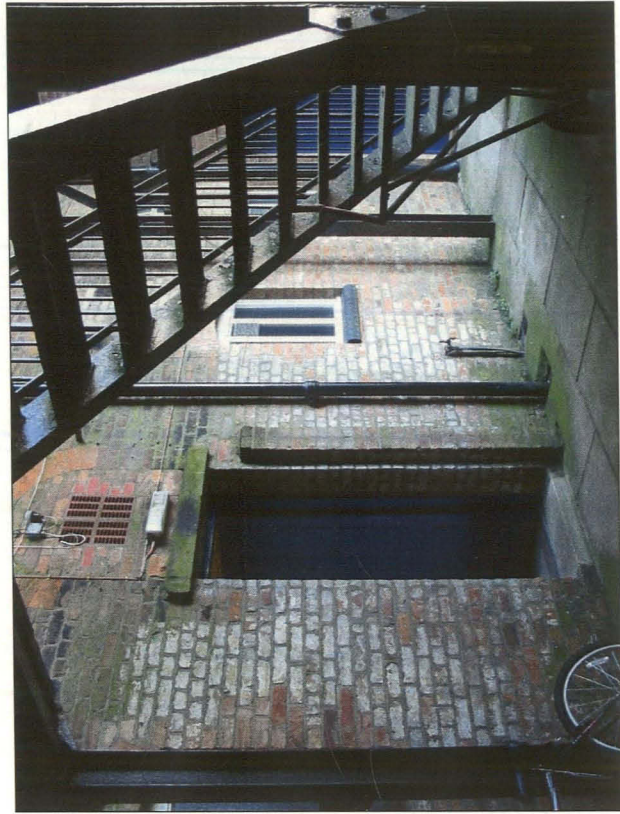


No. 17 - Corridor (back door)

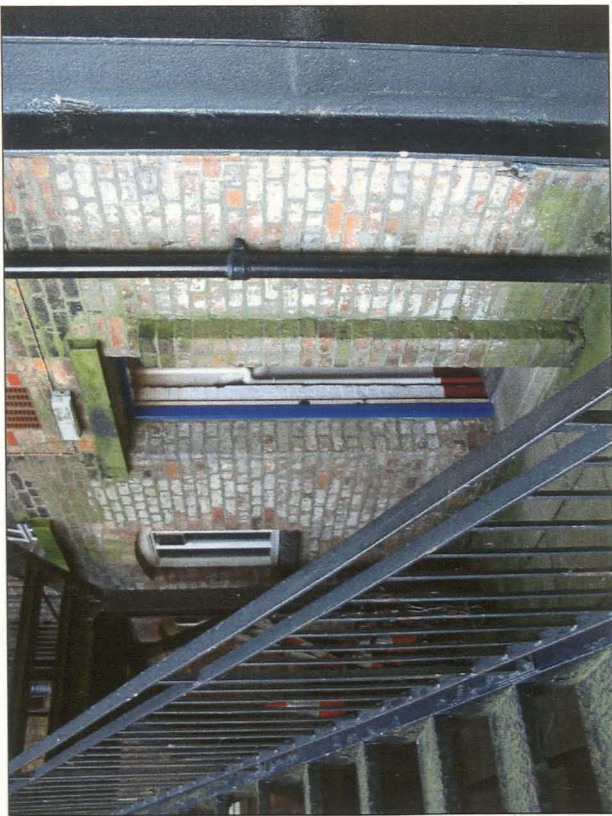




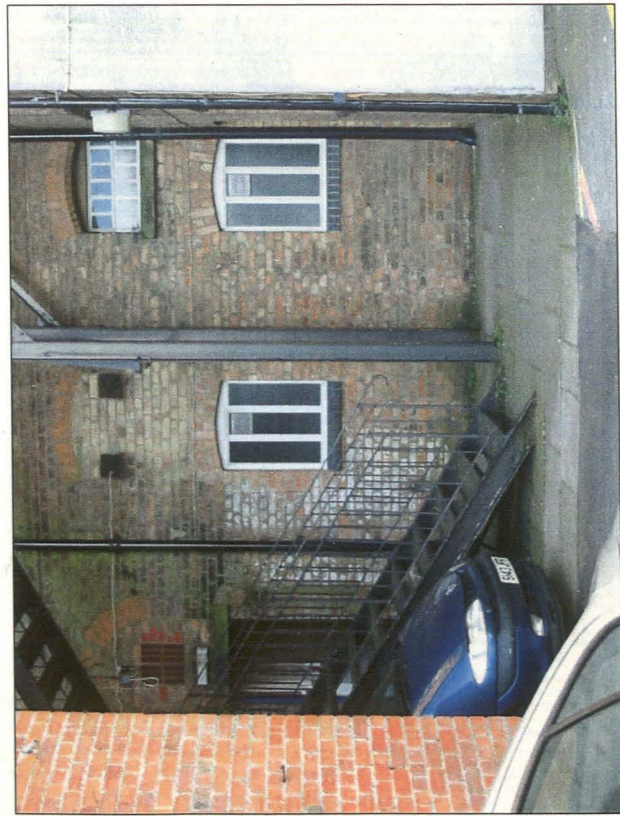
No. 18 - Rear Entrance



No. 19 - Rear Entrance



No. 20 - Rear Entrance

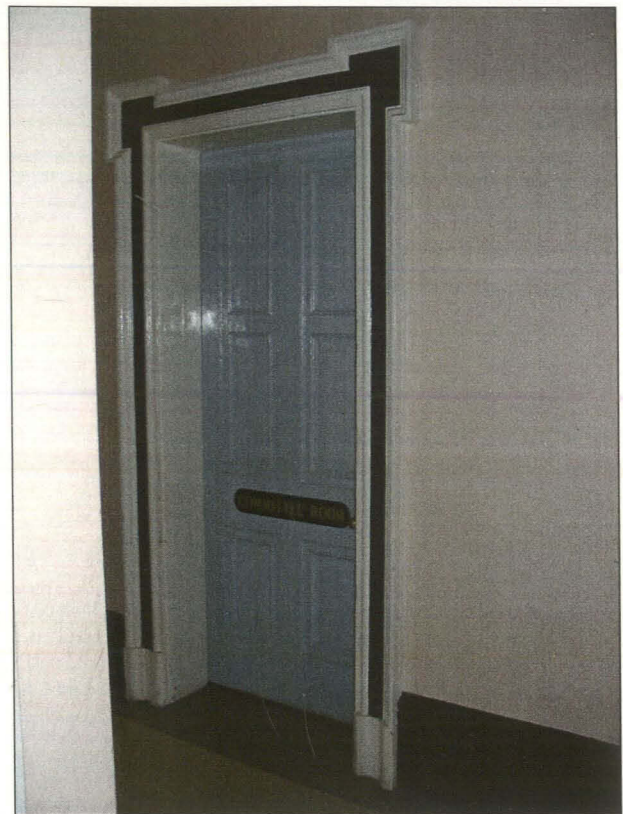


No. 21 - Rear Entrance





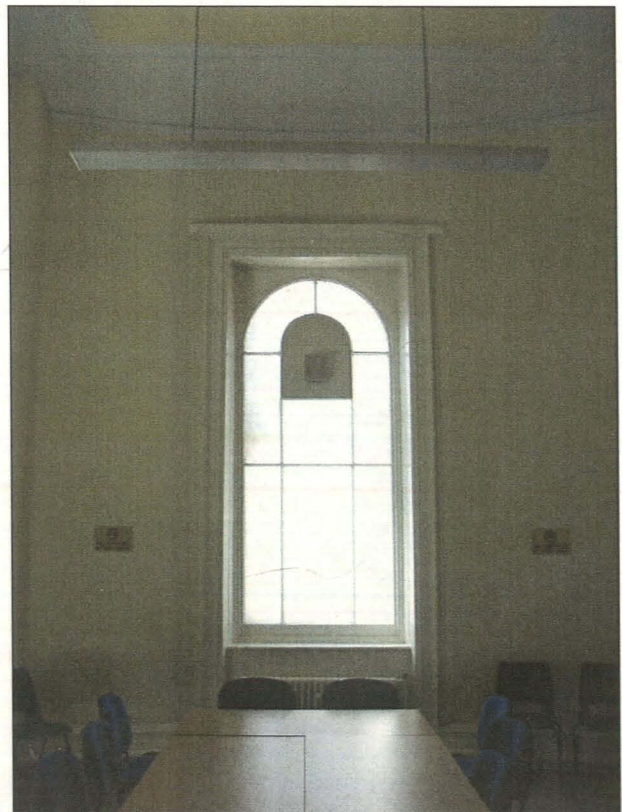
No. 22 - Corridor



No. 23 - Committee Room Entrance

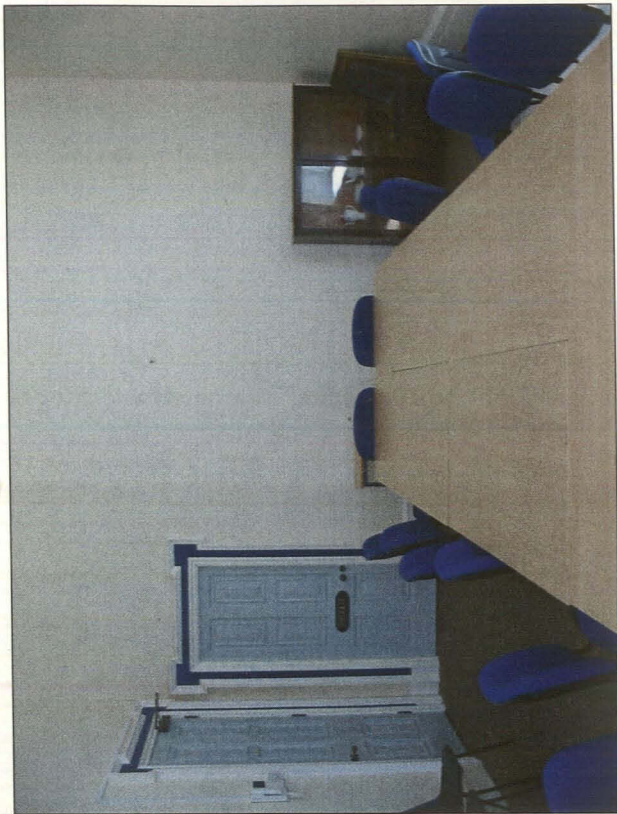


No. 24 - Committee Room



No. 24 - Committee Room

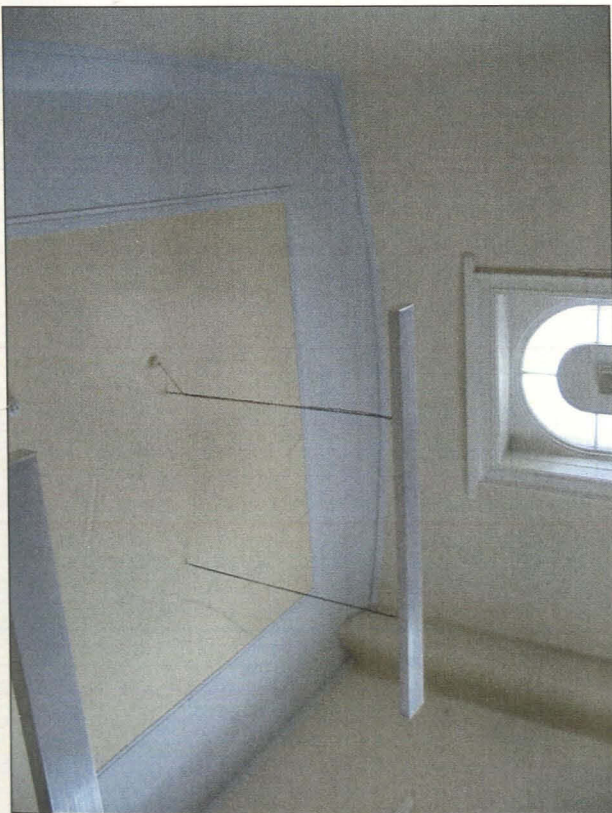




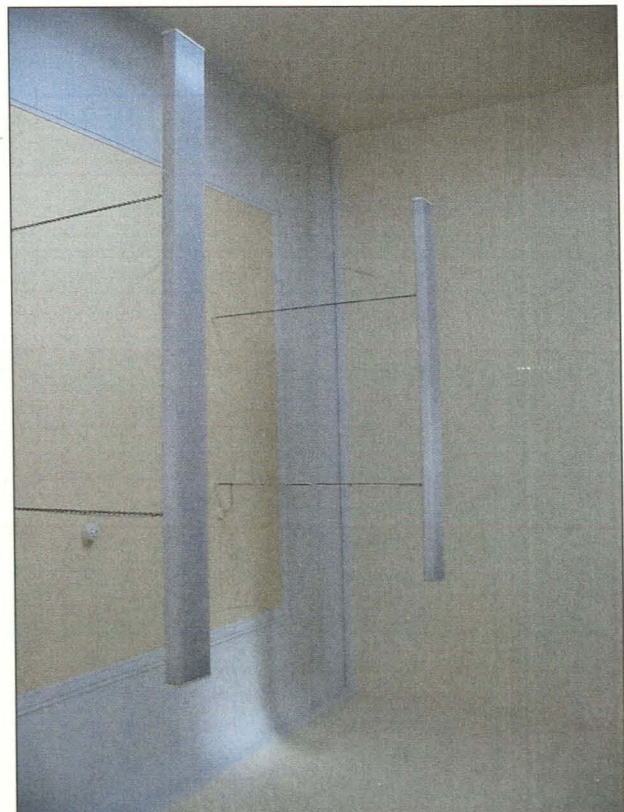
No. 24 - Committee Room



No. 24 - Committee Room



No. 24 - Committee Room Ceiling



No. 24 - Committee Room Ceiling



