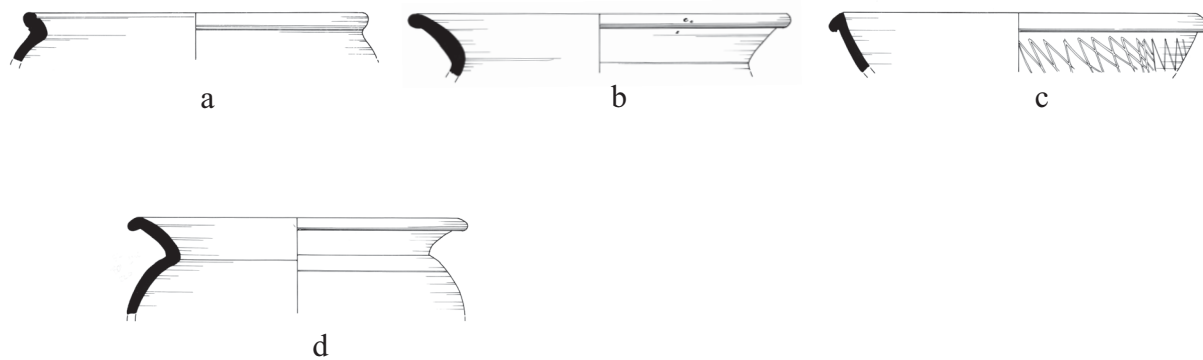




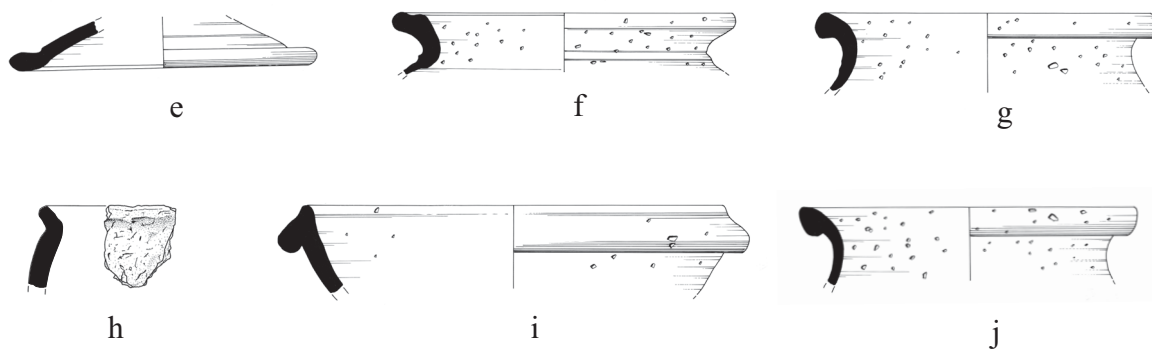
Figure A56 *Early Prehistoric pottery:*

a Vessel 1, context 283; **b** Vessel 2, 283; **c** Vessel 3, 283; **d** Vessel 4, 721; **e** Vessel 5, 722/723; **f** Vessel 6, 722

Class B



Class C



Class F

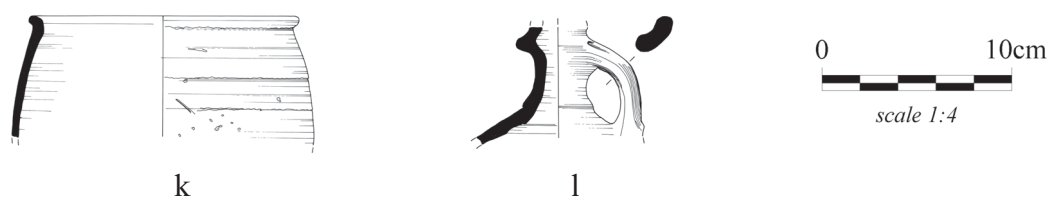


Figure A57 Roman pottery class B, C and F:
a context u/s; b 236; c 330; d 1314; e 10; f 333; g 668; h 668; i 1046; j 1416; k 145; l 669

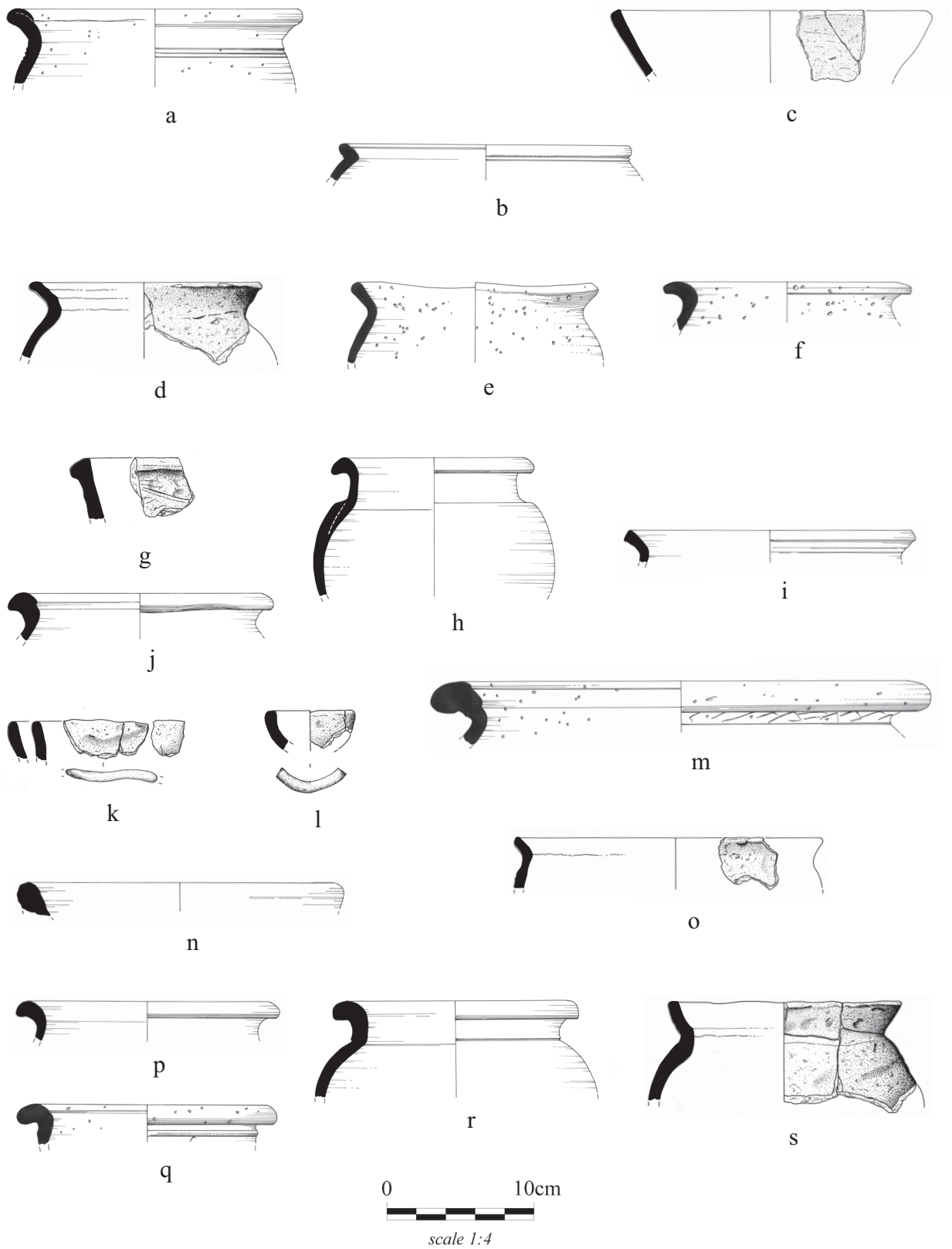


Figure A58 Roman pottery class G:
a context u/s; **b** u/s; **c** 52; **d** F120; **e** 145; **f** 185; **g** 236; **h** 271; **i** 352; **j** 264; **k** 400; **l** 400;
m 369; **n** 703; **o** 600; **p** 719; **q** 763; **r** 720; **s** 732

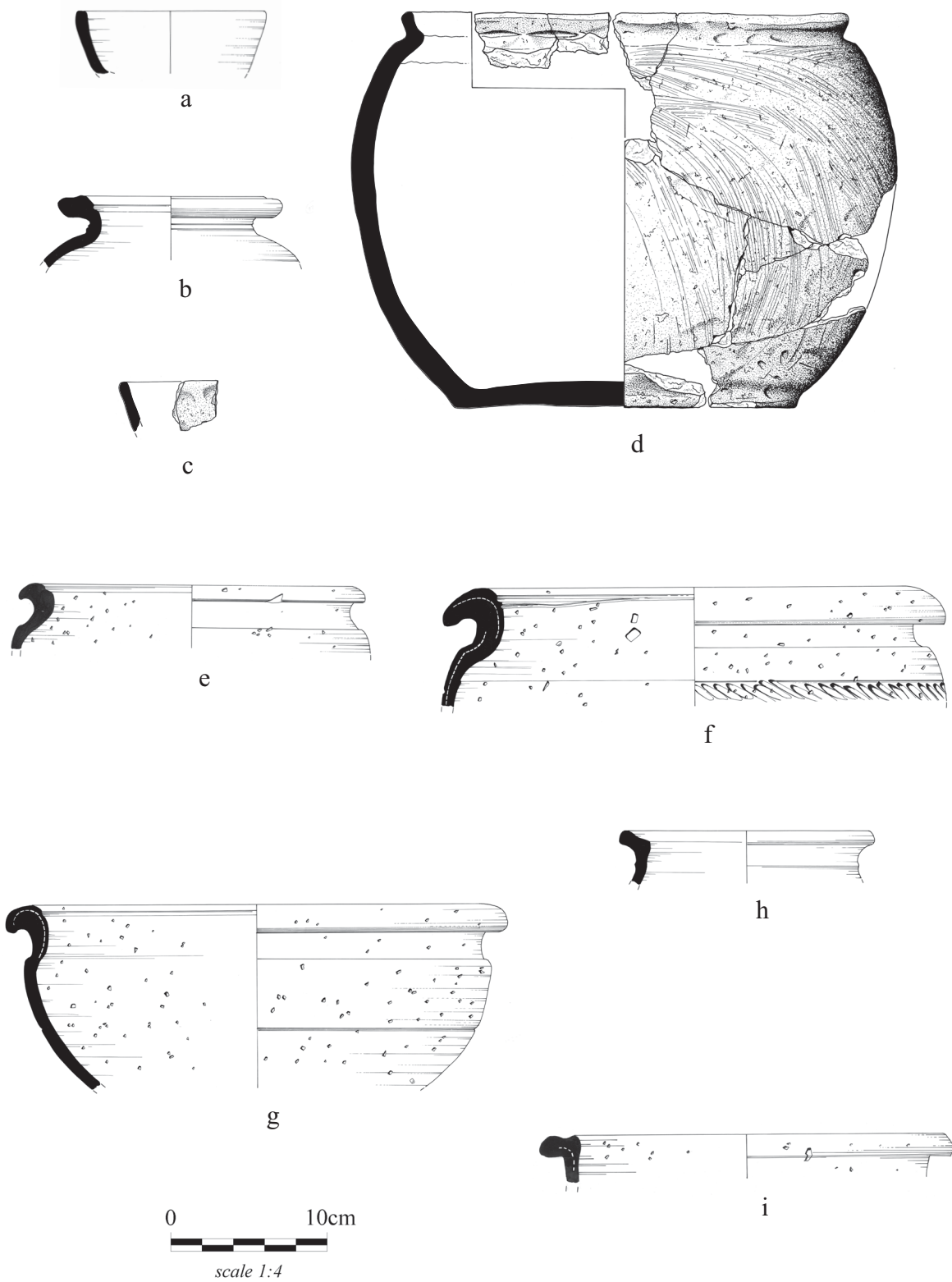
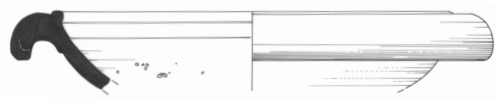
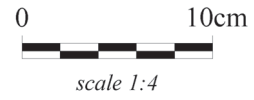
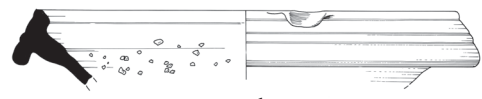


Figure A59 Roman pottery class G continued:
 a context 840; b F976; c 1007; d 882; e 1016; f 1016; g 1030; h 1416; i 1416

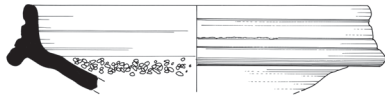
Class M



a



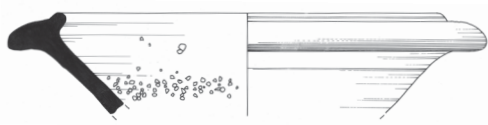
b



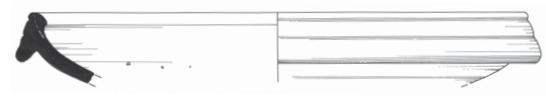
c



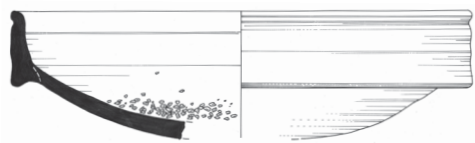
d



e



f



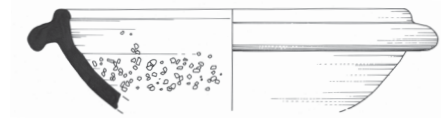
g



h



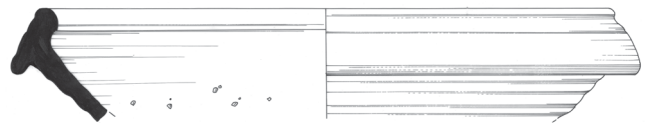
i



j



k



l

Class O



m

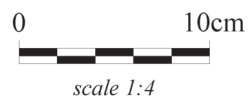


Figure A60 Roman pottery class M and O:

a context u/s; b u/s; c 148; d 323; e 232; f 236; g F241; h 492; i 668; j 1090; k 1100; l 1317; m 1201

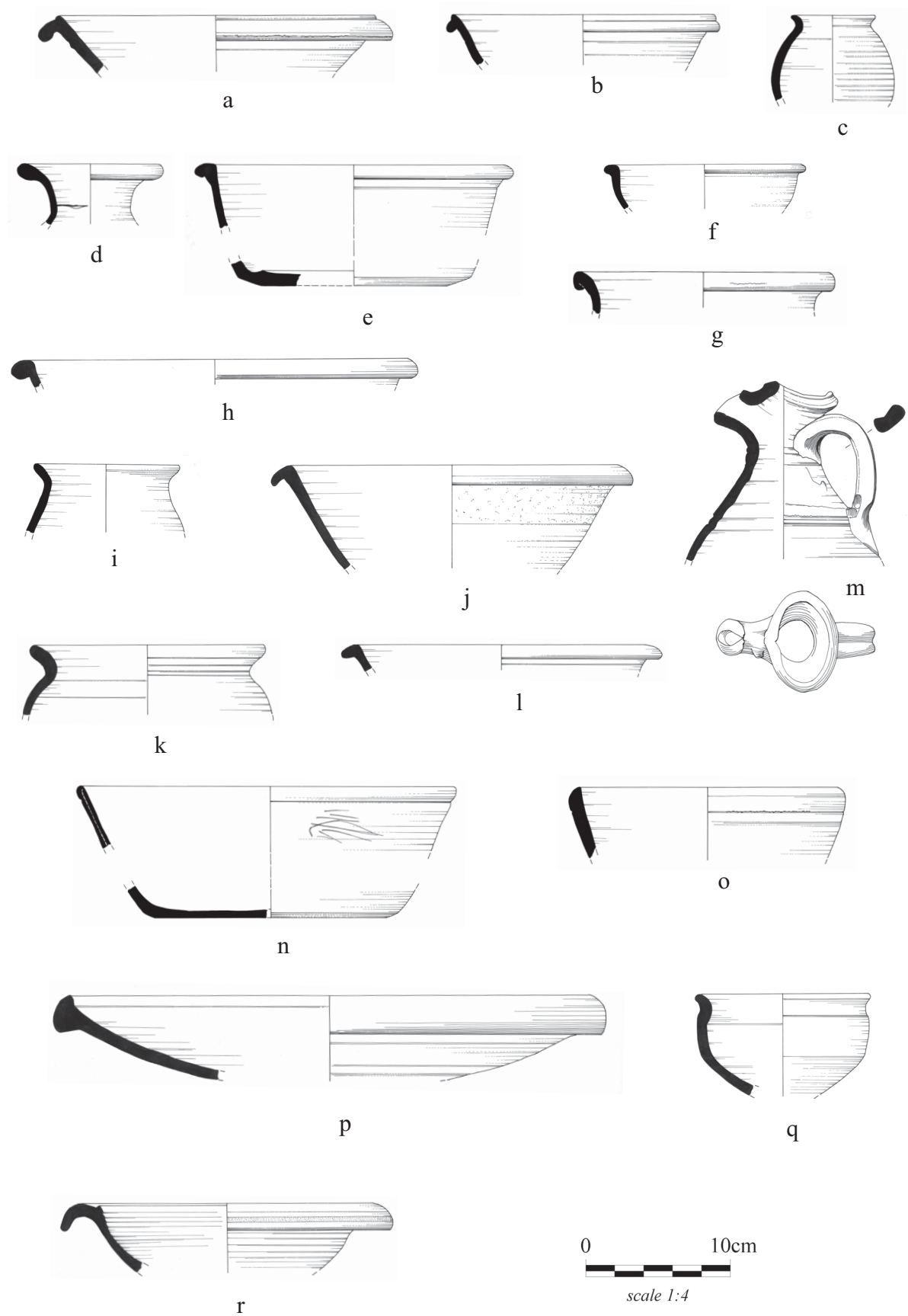


Figure A61 Roman pottery class R:

a context 52; b 63; c 91; d 127; e 145; f 233; g 233; h 236; i 236; j 236; k 287; l 312; m 236; n 337; o 586; p 671; q 668; r 703

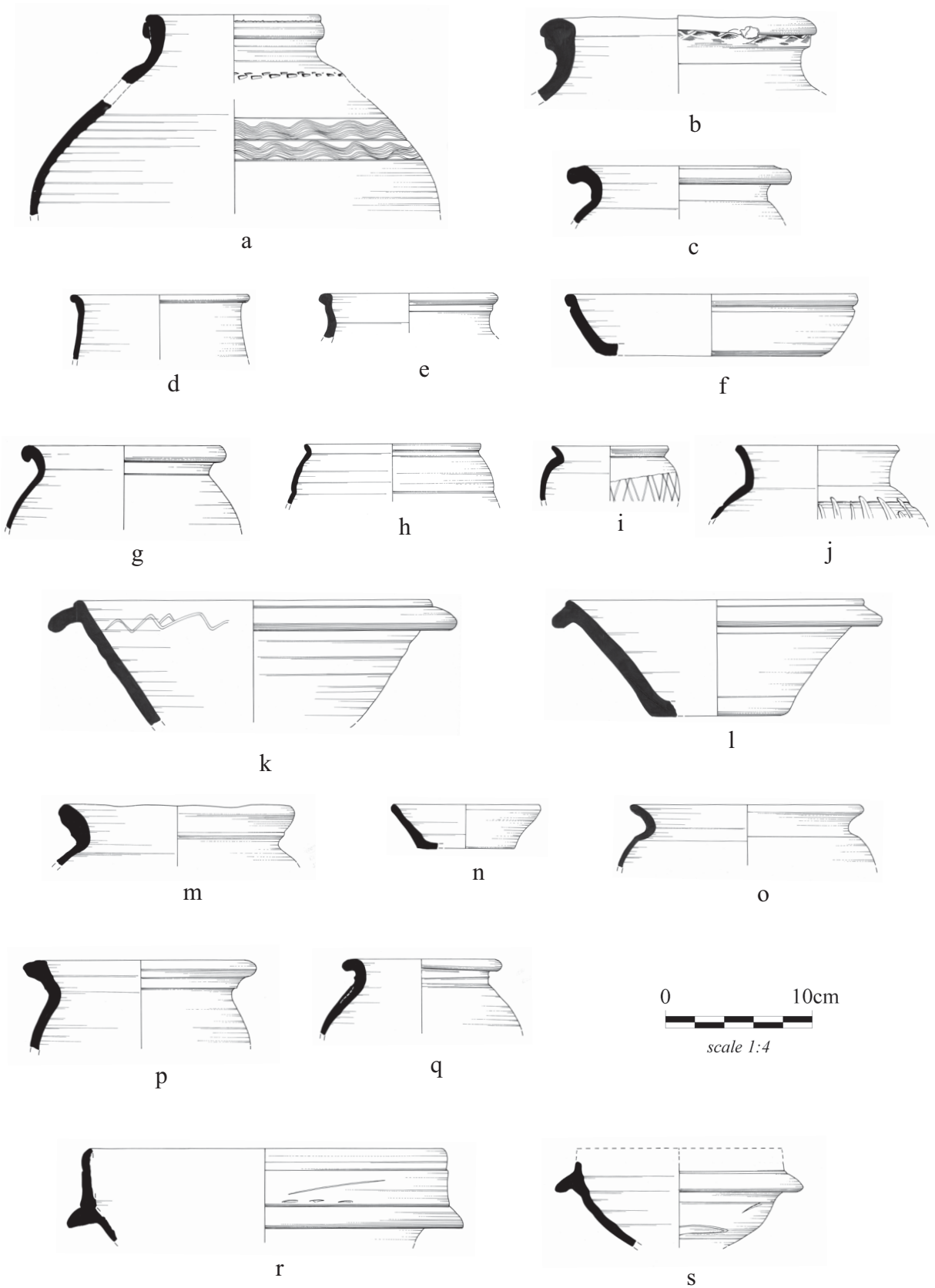
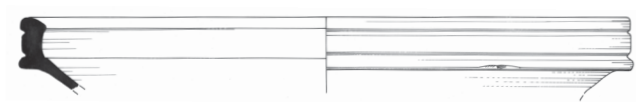
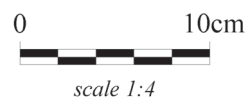


Figure A62 *Roman pottery class R continued:*
a context 719; **b** 720; **c** 720; **d** 752; **e** 762; **f** 766; **g** 848; **h** 882; **i** 882; **j** 889; **k** 889; **l** 994;
m 1007; **n** 1072; **o** 1201; **p** 1242; **q** 1286; **r** 1317; **s** 1345

Class W



a



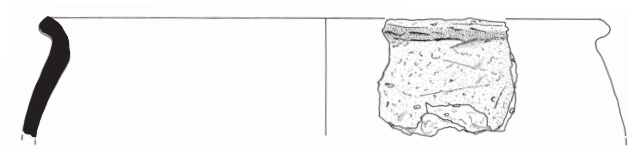
Class Z



b



c



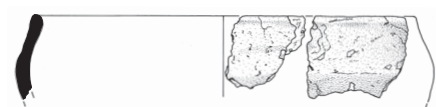
d



e



f



g



h

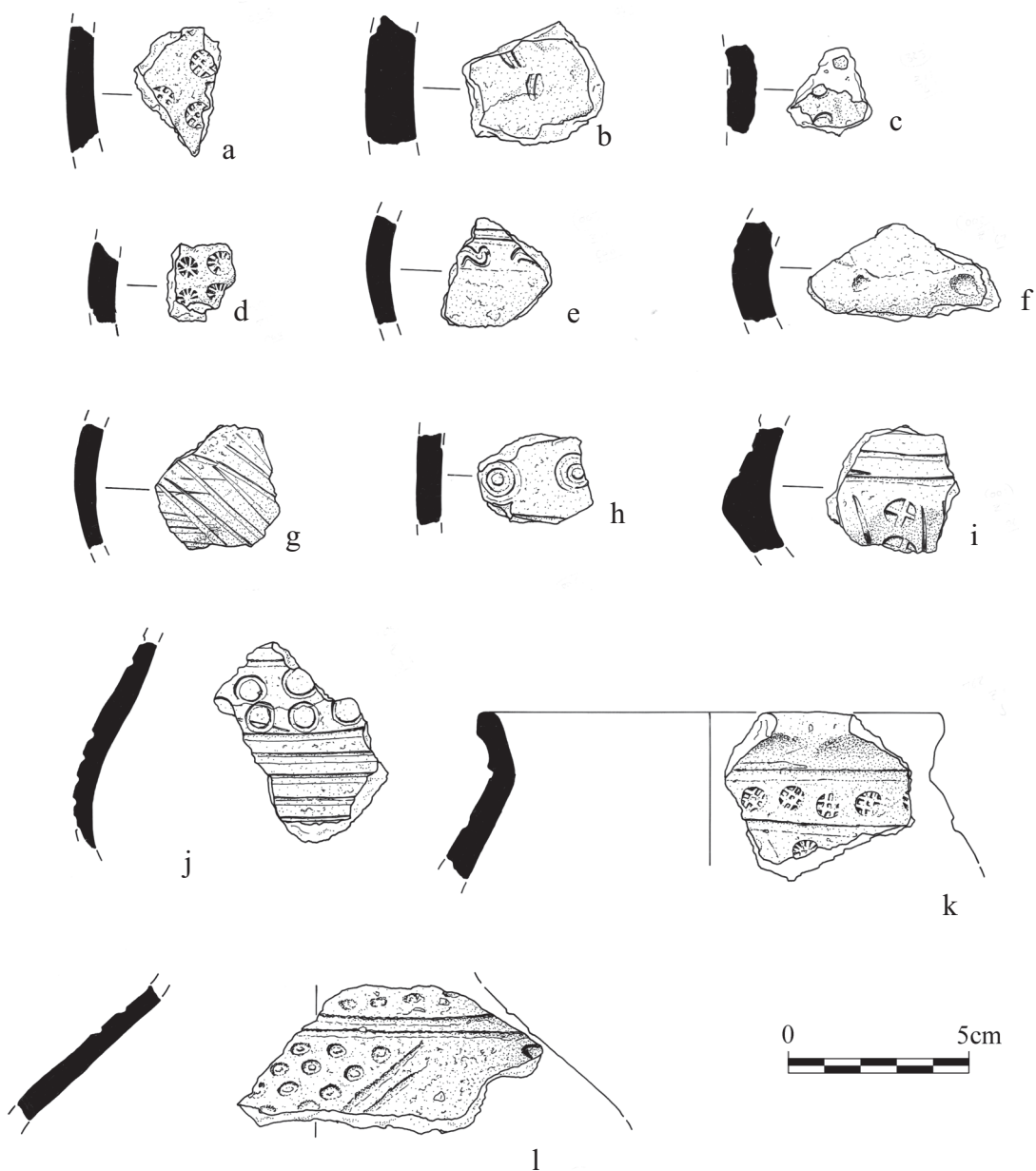


i



Figure A63 Roman pottery class W and Z:
a context 668; b u/s; c 2; d 3; e 3; f 3; g 3; h 762; i 848

Pottery stamps



Ceramic objects

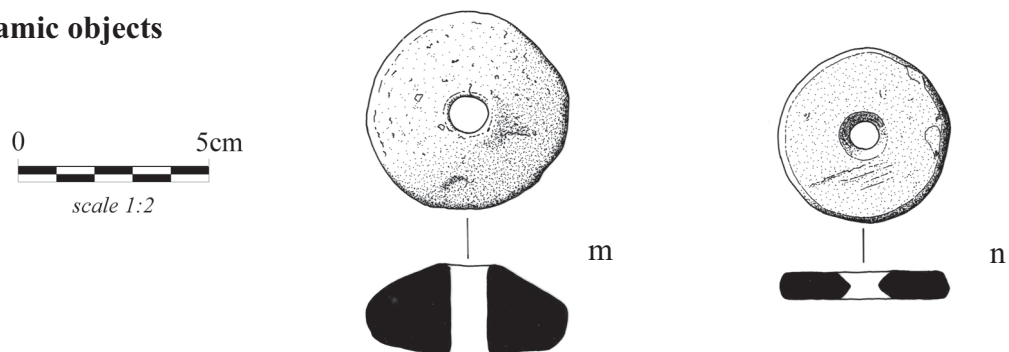


Figure A64 *Anglian pottery stamps and ceramic objects:*
a context 2; **b** 3; **c** 323; **d** 3; **e** 3; **f** 2; **g** 52; **h** 2; **i** 1; **j** 52; **k** 762; **l** 668; **m** SF225, context 977;
n SF226, u/s

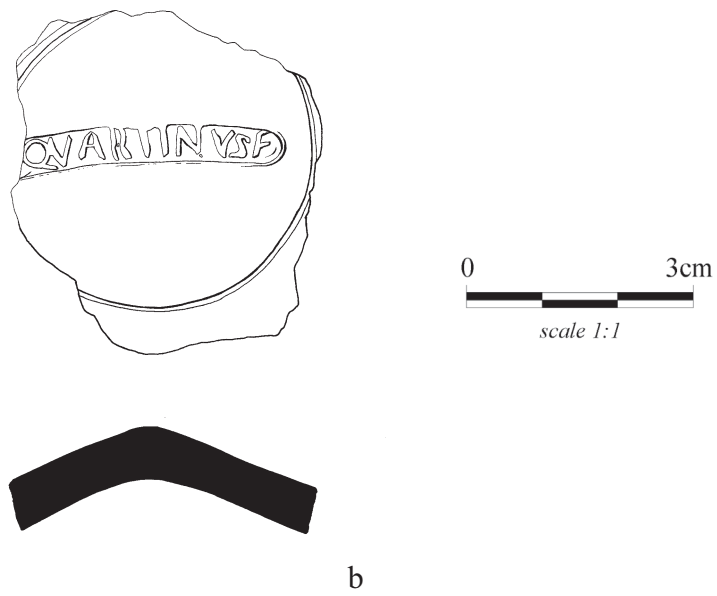
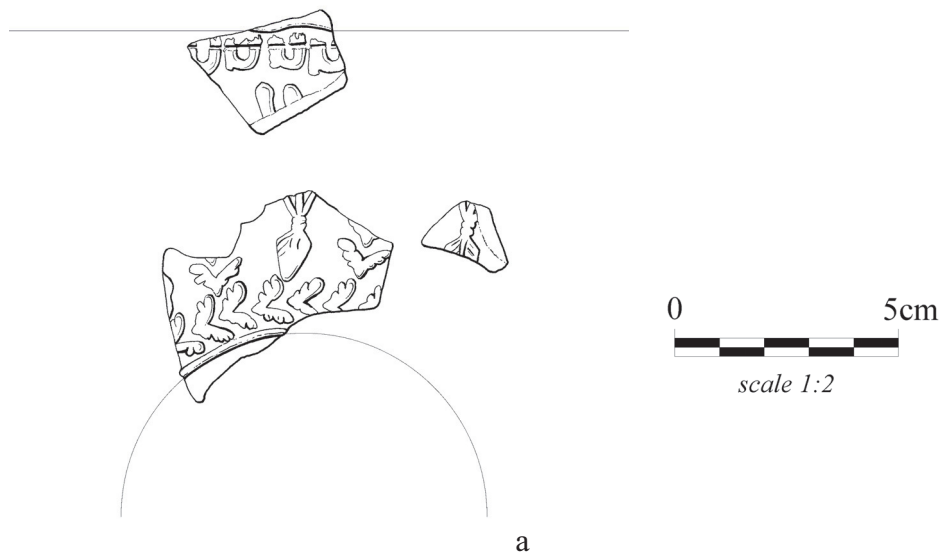


Figure A65 *Samian ware*:
a context 233/236; **b** context 2

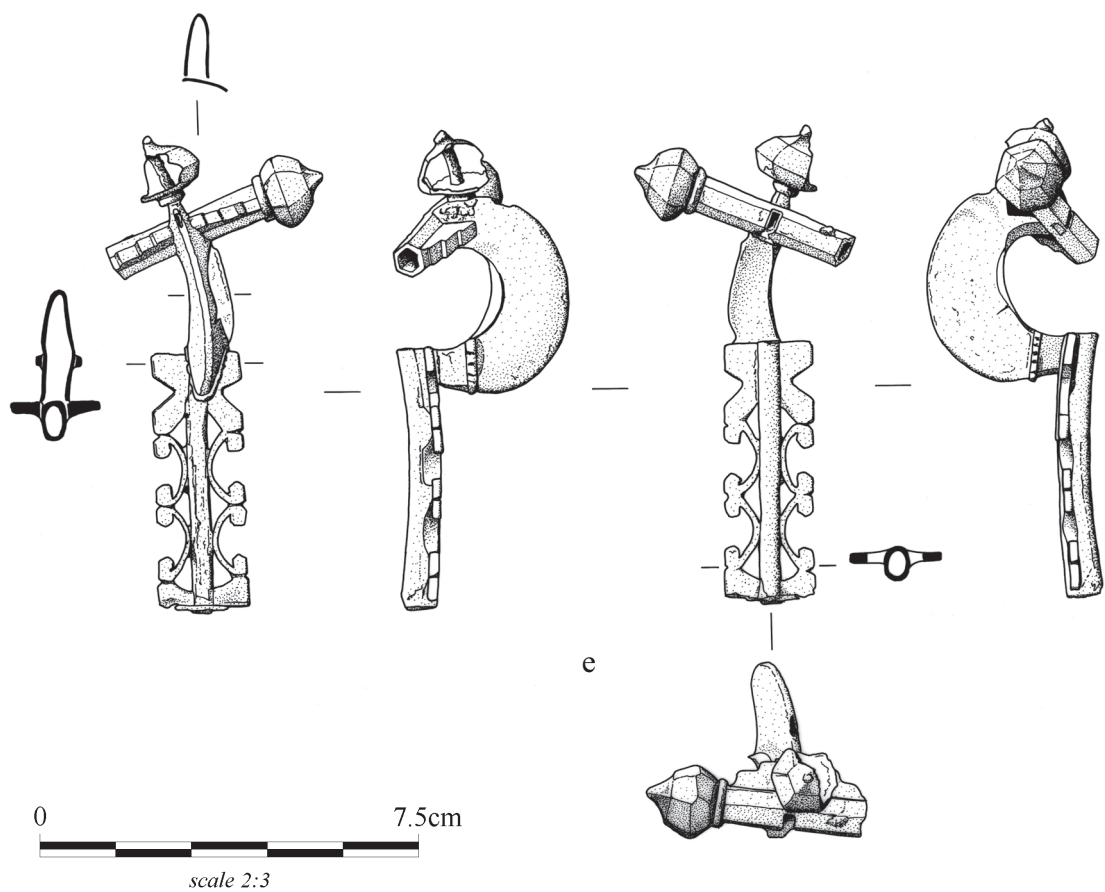
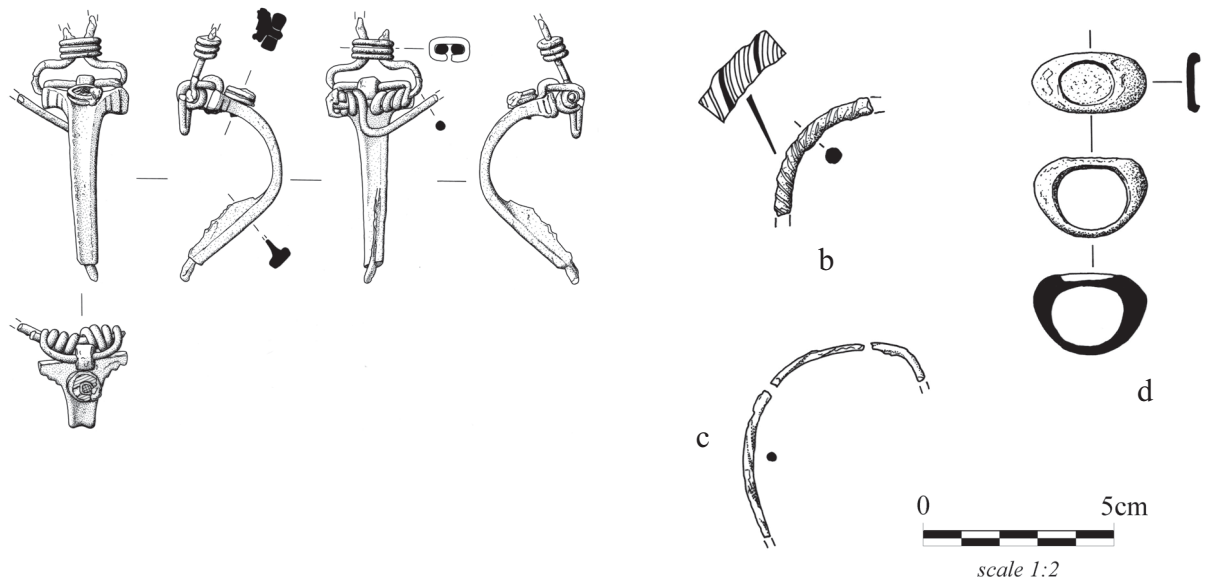


Figure A66 *Copper alloy objects:*
a SF1, context 1461/1273; **b** SF45, 361; **c** SF93, 994; **d** SF166, MDF H; **e** SF91, 763

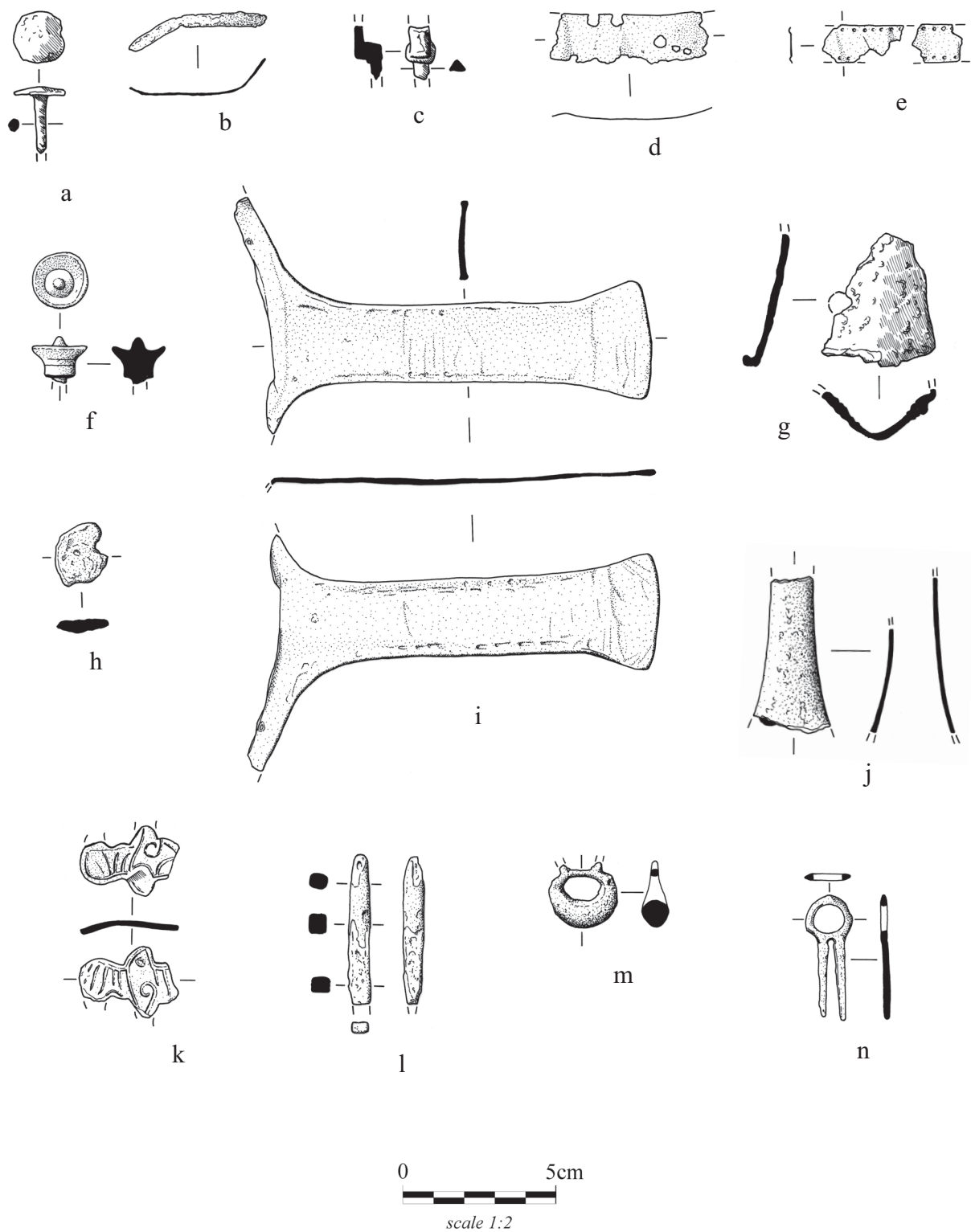
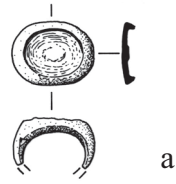


Figure A67 *Copper alloy objects continued:*

a SF47, context 242; **b** SF50, 1100; **c** SF51, 1016; **d** SF53, 1289; **e** SF92, 1083; **f** SF167, MDH H; **g** SF97, 1245; **h** SF95, 1016; **i** SF94, 1050; **j** SF114, u/s; **k** SF169, MDF A; **l** SF144, MDF AD; **m** SF170, MDF C; **n** SF171, MDF F

Silver object



Lead & Pewter objects

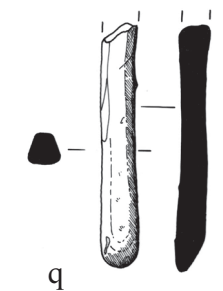
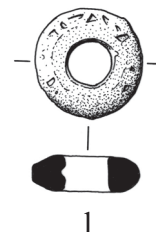
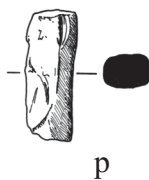
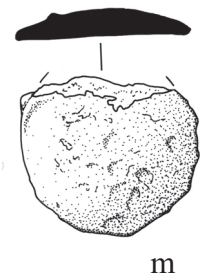
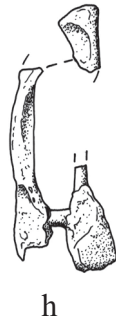
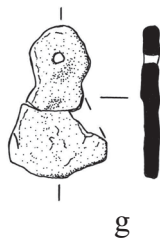
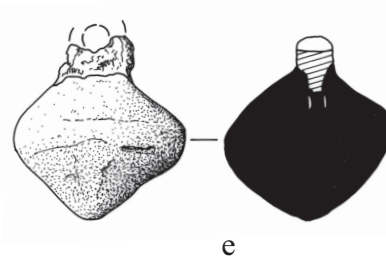
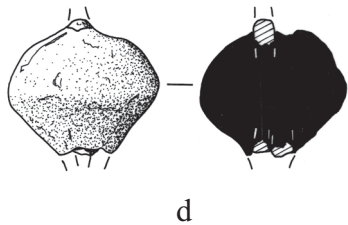
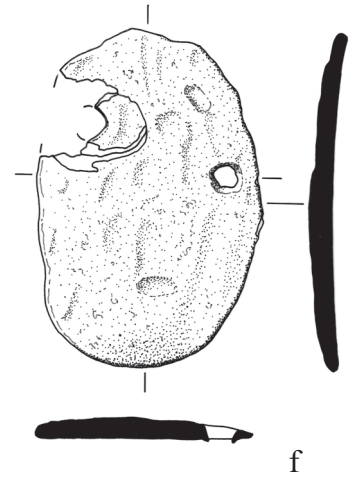
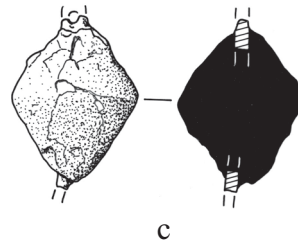
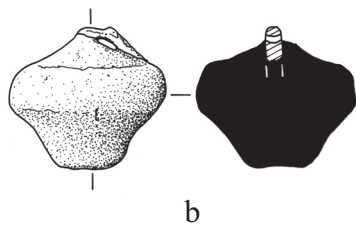


Figure A68 *Silver and lead & pewter objects:*

a SF172, context MDF I; **b** SF115, MDF AL; **c** SF116, MDF AL; **d** SF121, 719; **e** SF122, MDF AA; **f** SF118, 668; **g** SF159, MDF AD; **h** SF158, 751; **i** SF173, 273; **j** SF174, 534; **k** SF177, MDF AK; **l** SF179, MDF G; **m** SF119, 668; **n** SF182, 121; **o** SF184, 352; **p** SF185, 1168; **q** SF181, u/s

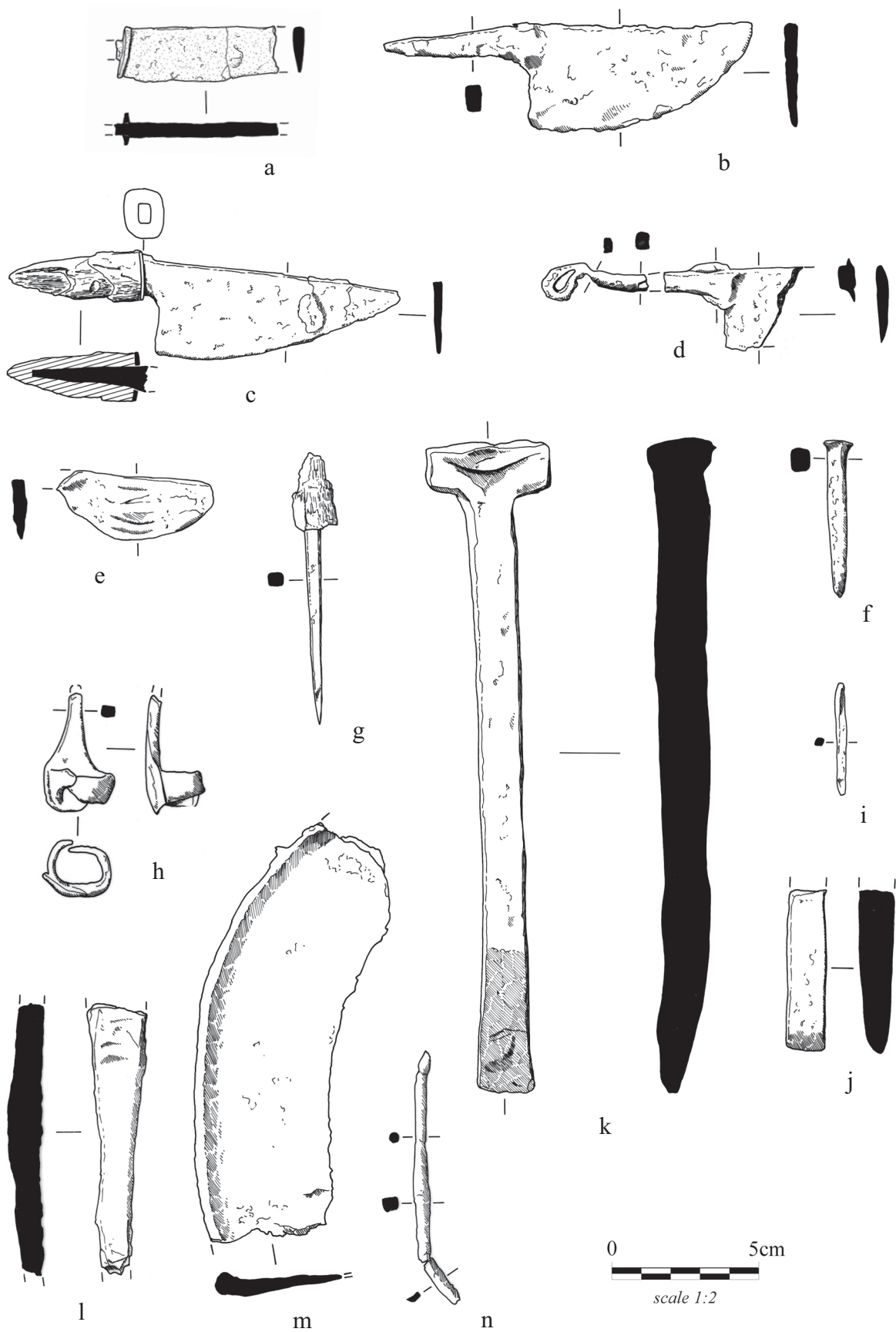


Figure A69 *Ferrous objects:*

a SF46, context 233; **b** SF104, 1242; **c** SF109, 994; **d** SF135, 660; **e** SF146, 668; **f** SF141, 3;
g SF110, 994; **h** SF99, 1245; **i** SF145, 668; **j** SF148, 747; **k** SF124, 236; **l** SF49, 747;
m SF106, 220; **n** SF105, 3

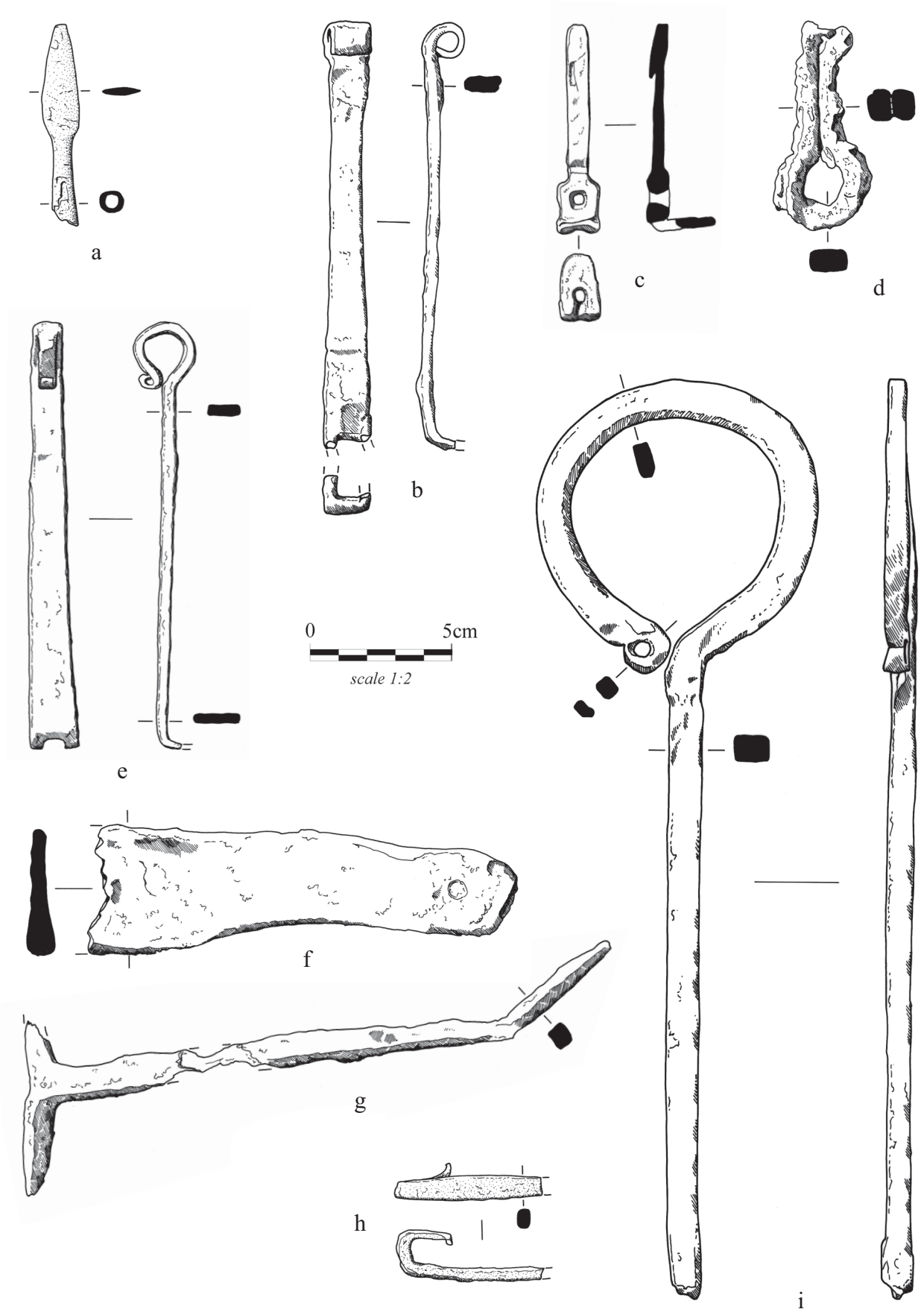


Figure A70 *Ferrous objects continued:*

a SF18, context 695; **b** SF65, 10; **c** SF113, 668; **d** SF1a, 668; **e** SF128, 1399; **f** SF7, 236; **g** SF13, 545; **h** SF17, 805; **i** SF37, 1090

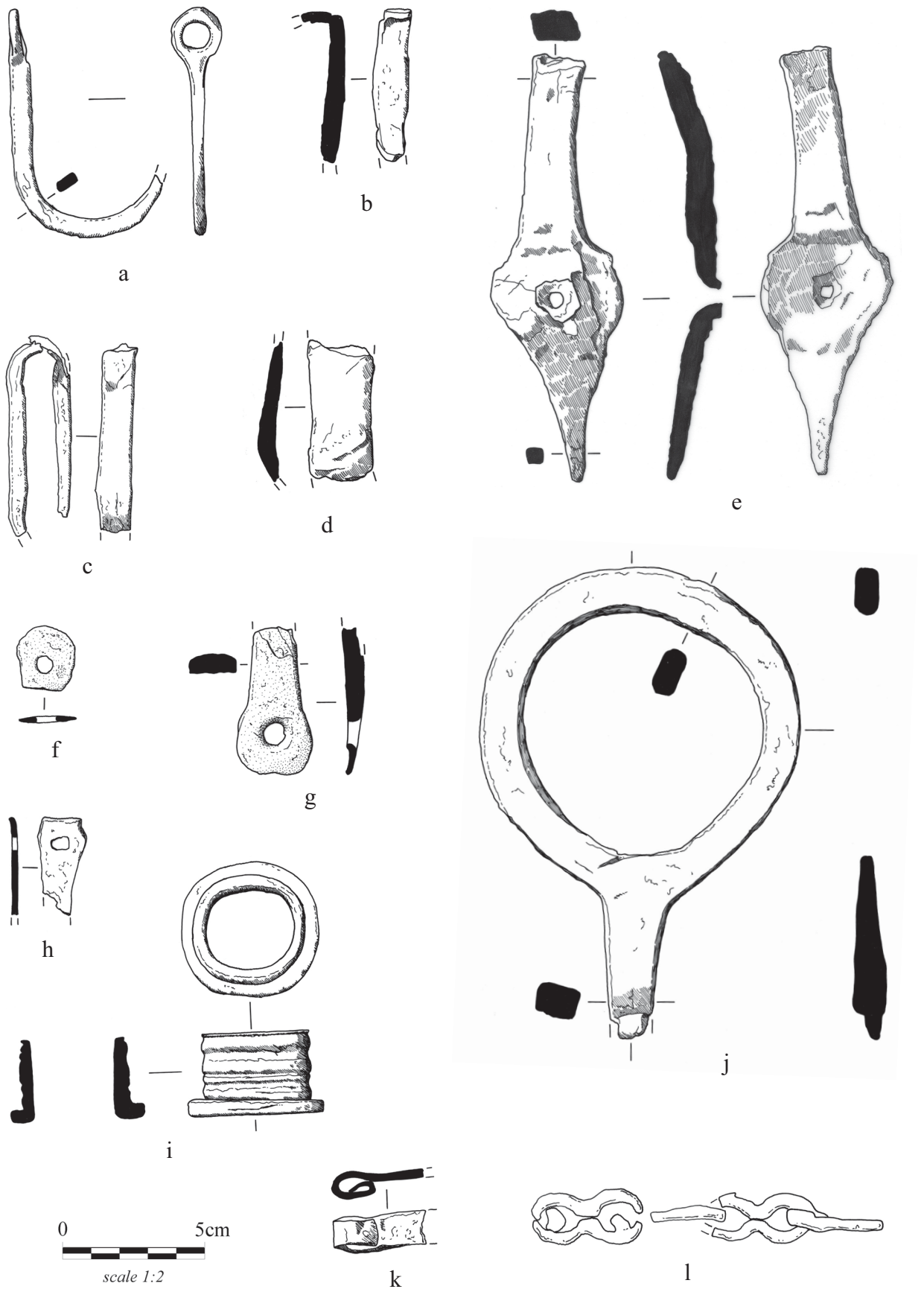


Figure A71 *Ferrous objects continued:*

a SF48, context u/s; **b** SF67, MDF 2; **c** SF70, 1083; **d** SF98, 1245; **e** SF68, 719; **f** SF103, 1245; **g** SF107, 1100; **h** SF129, 747; **i** SF130, 747; **j** SF127, 720; **k** SF164, 751; **l** SF189, 732

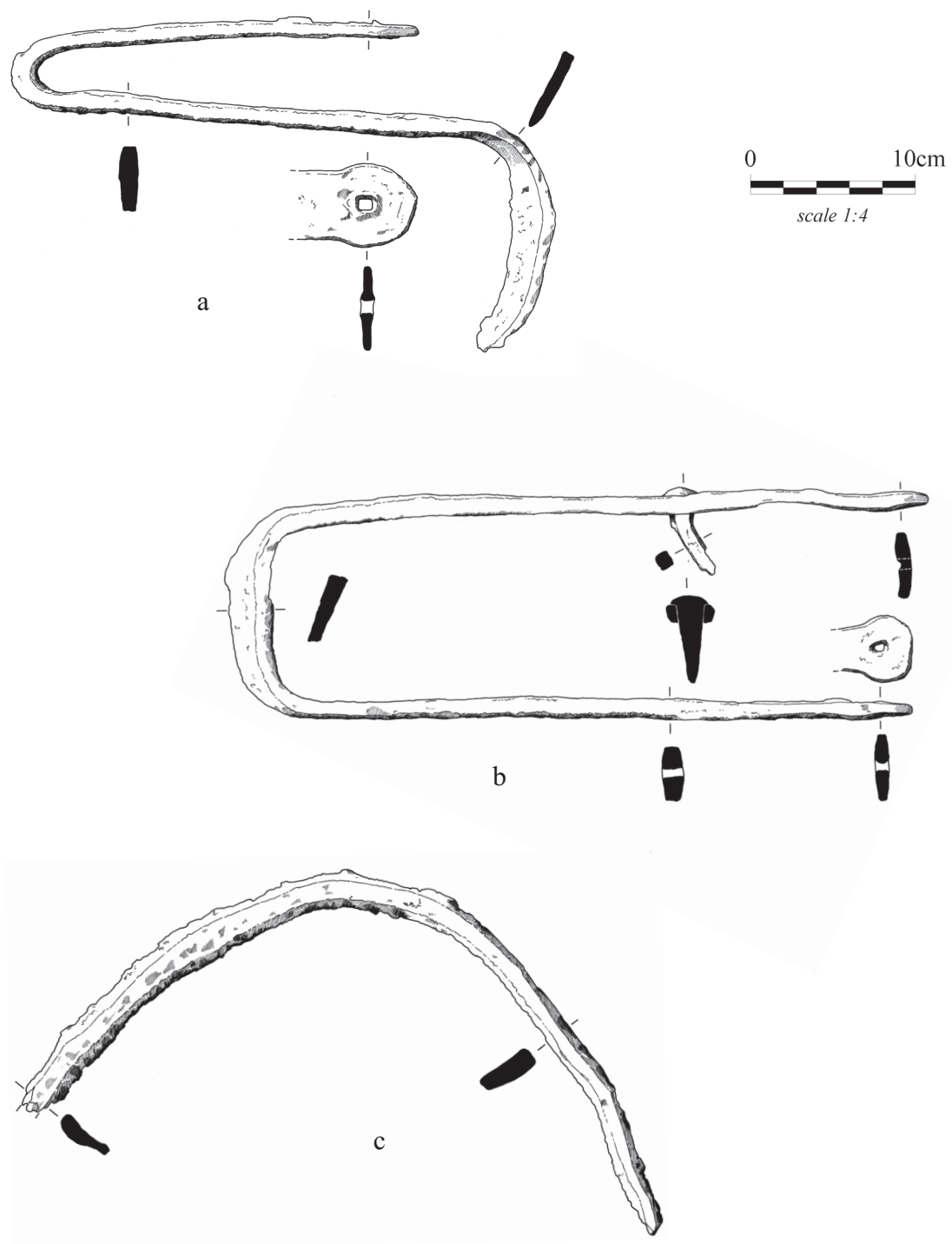


Figure A72 *Ferrous objects continued:*
a SF155, context 720; b SF156, 720; c SF157, 720

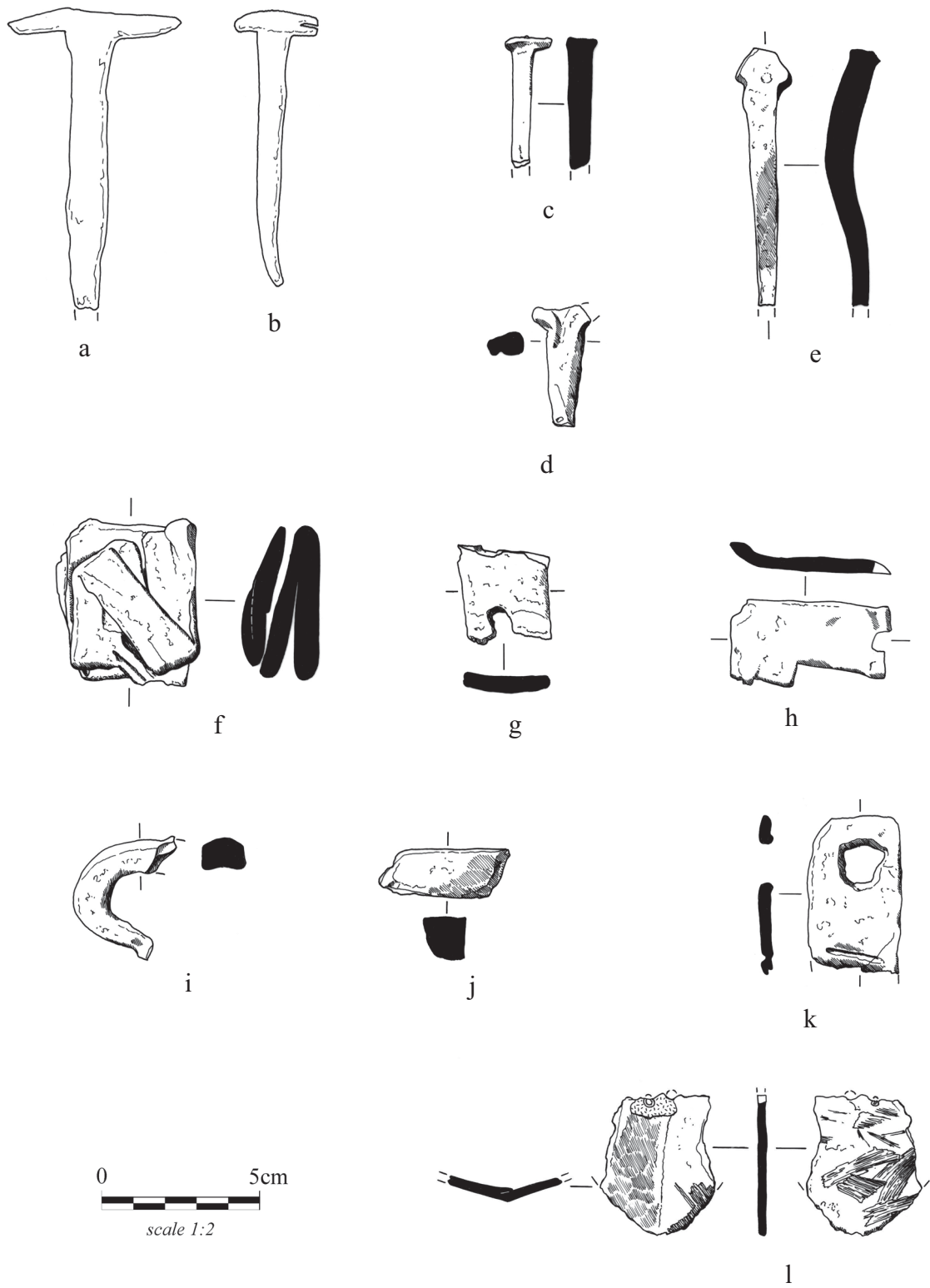


Figure A73 *Ferrous objects continued:*

a SF187, context 310; **b** SF188, 310; **c** SF111, 994; **d** SF123, 1245; **e** SF126, 1090; **f** SF125, 668; **g** SF131, 747; **h** SF132, 747; **i** SF138, 882; **j** SF149, 747; **k** SF151, 668; **l** SF140, 86

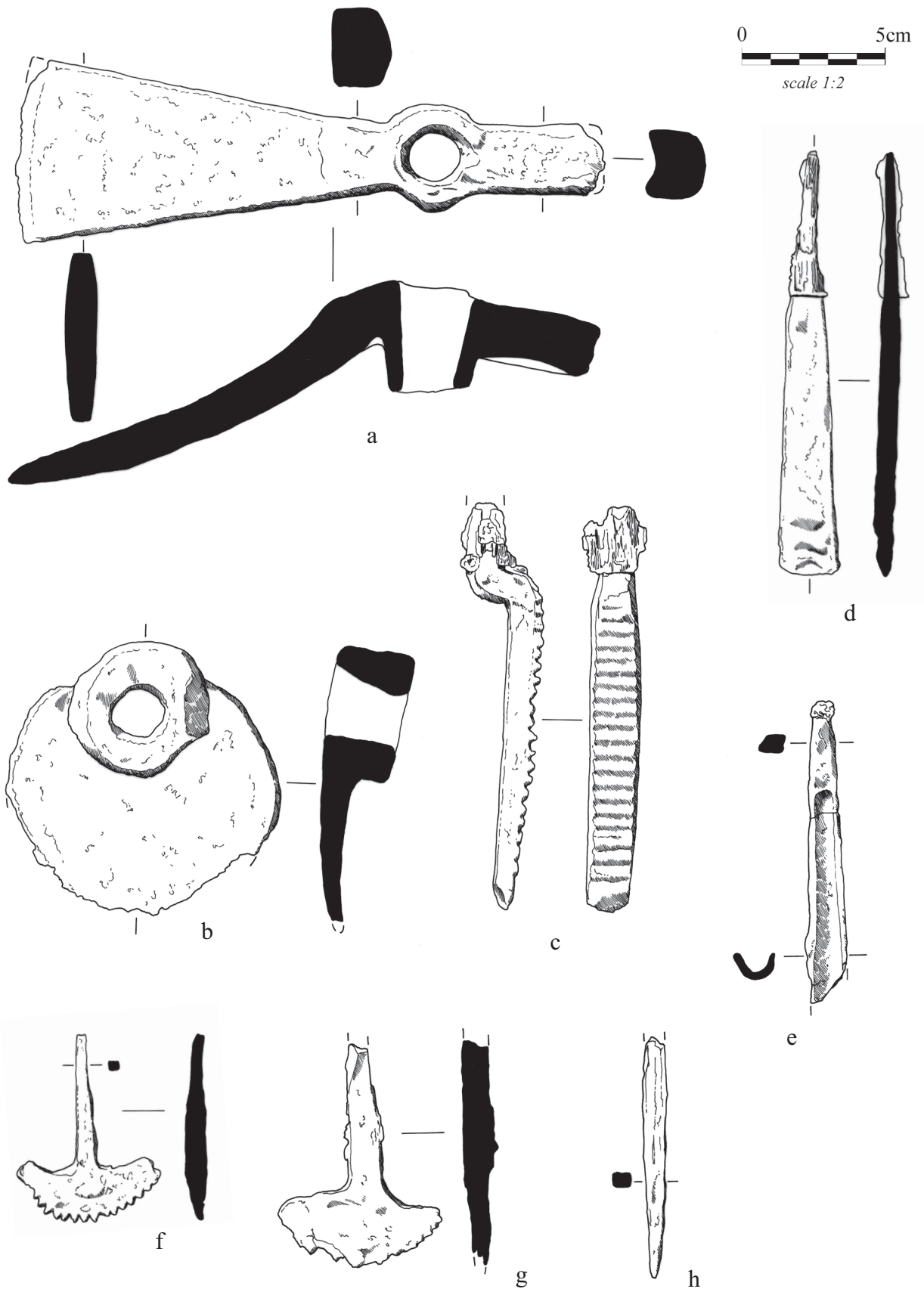


Figure A74 *Metalwork hoard (context 334):*
a SF112.1; **b** SF112.2; **c** SF112.3; **d** SF112.4; **e** SF112.5; **f** SF112.6; **g** SF112.7; **h** SF112.8

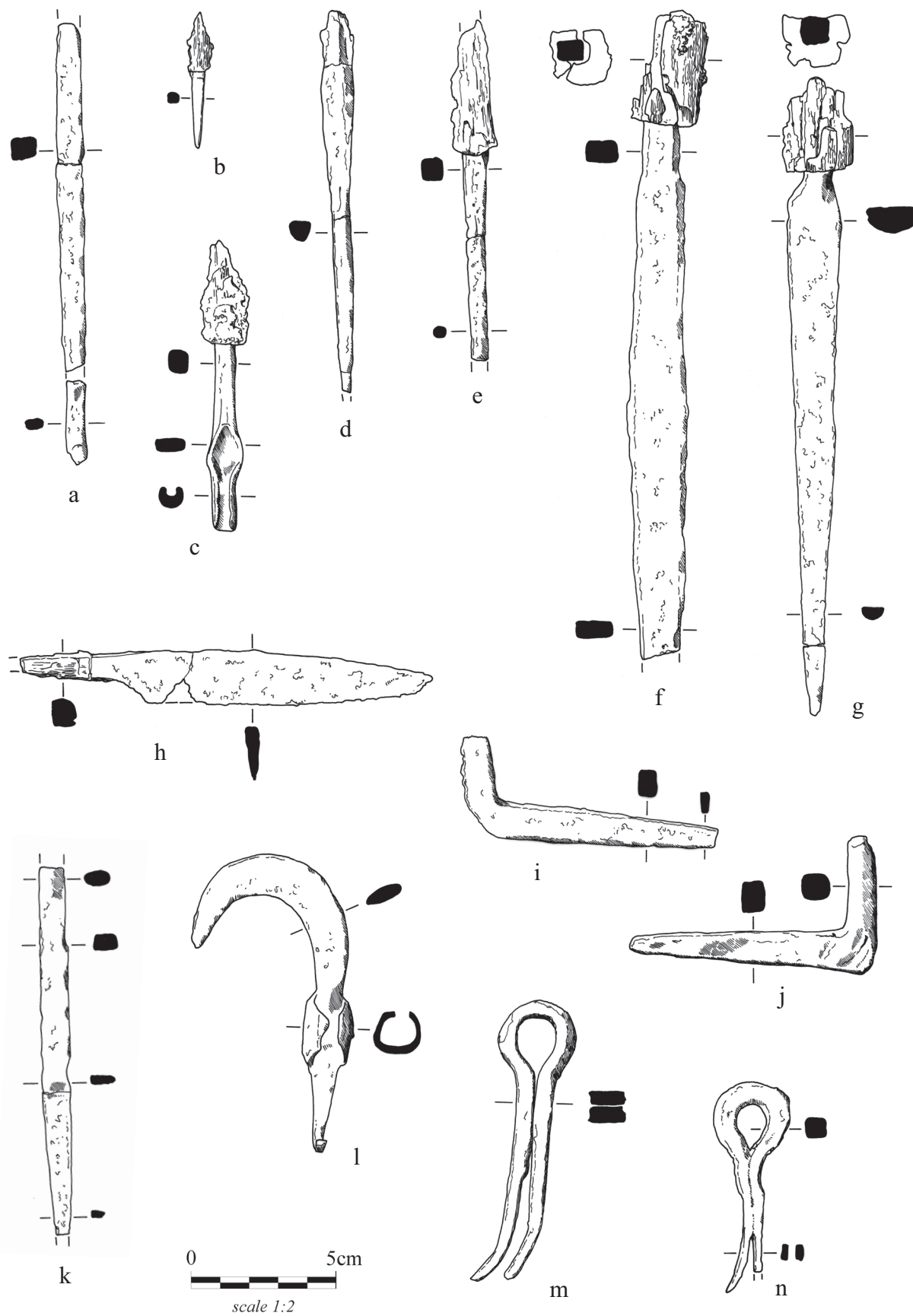


Figure A75 *Metalwork hoard continued (context 334):*
a SF112.9; **b** SF112.10; **c** SF112.11; **d** SF112.12; **e** SF112.13; **f** SF112.14; **g** SF112.15; **h** SF112.17; **i** SF112.24; **j** SF112.23; **k** SF112.16; **l** SF112.18; **m** SF112.26; **n** SF112.25

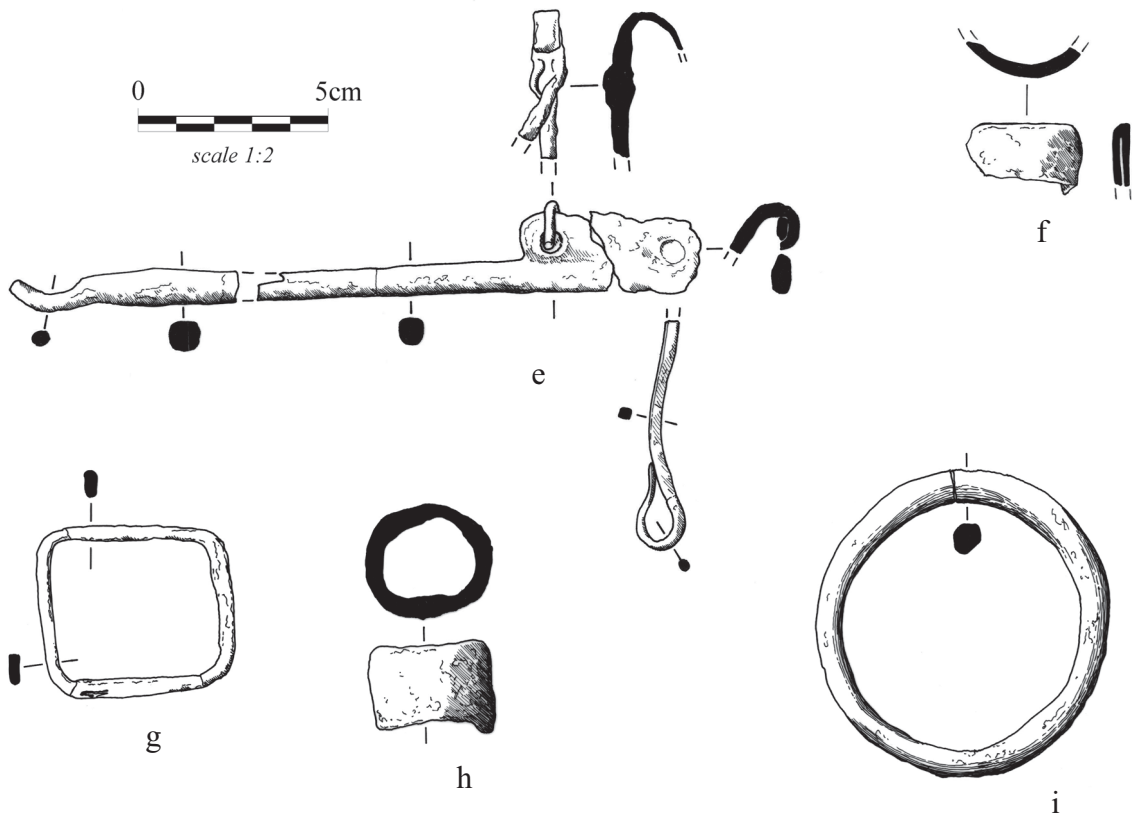
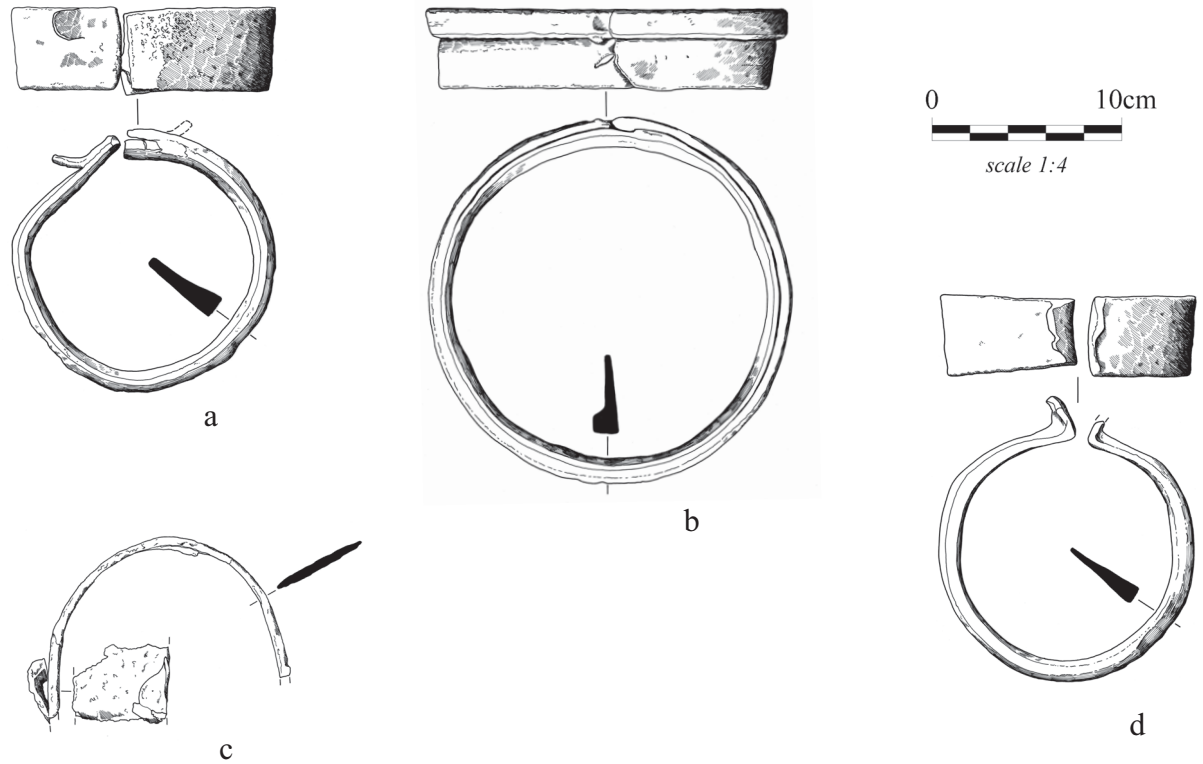


Figure A76 *Metalwork hoard continued (context 334):*
a SF112.20; **b** SF112.19; **c** SF112.22; **d** SF112.21; **e** SF112.27; **f** SF112.28; **g** SF112.29; **h** SF112.30; **i** SF112.31

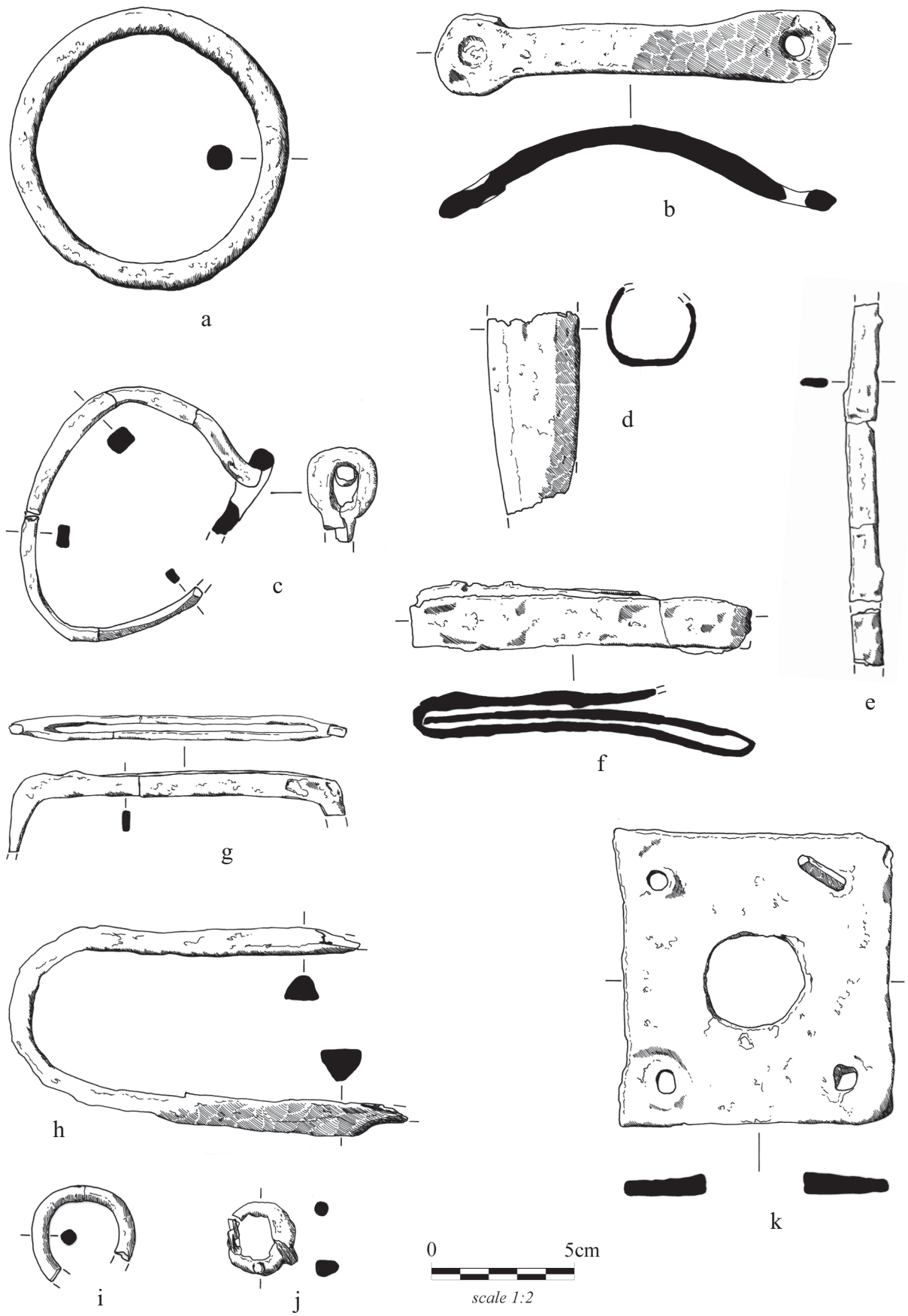


Figure A77 *Metalwork hoard continued (context 334):*

a SF112.32; **b** SF112.33; **c** SF112.34; **d** SF112.35; **e** SF112.36; **f** SF112.37; **g** SF112.38; **h** SF112.39; **i** SF112.40; **j** SF112.42; **k** SF112.41

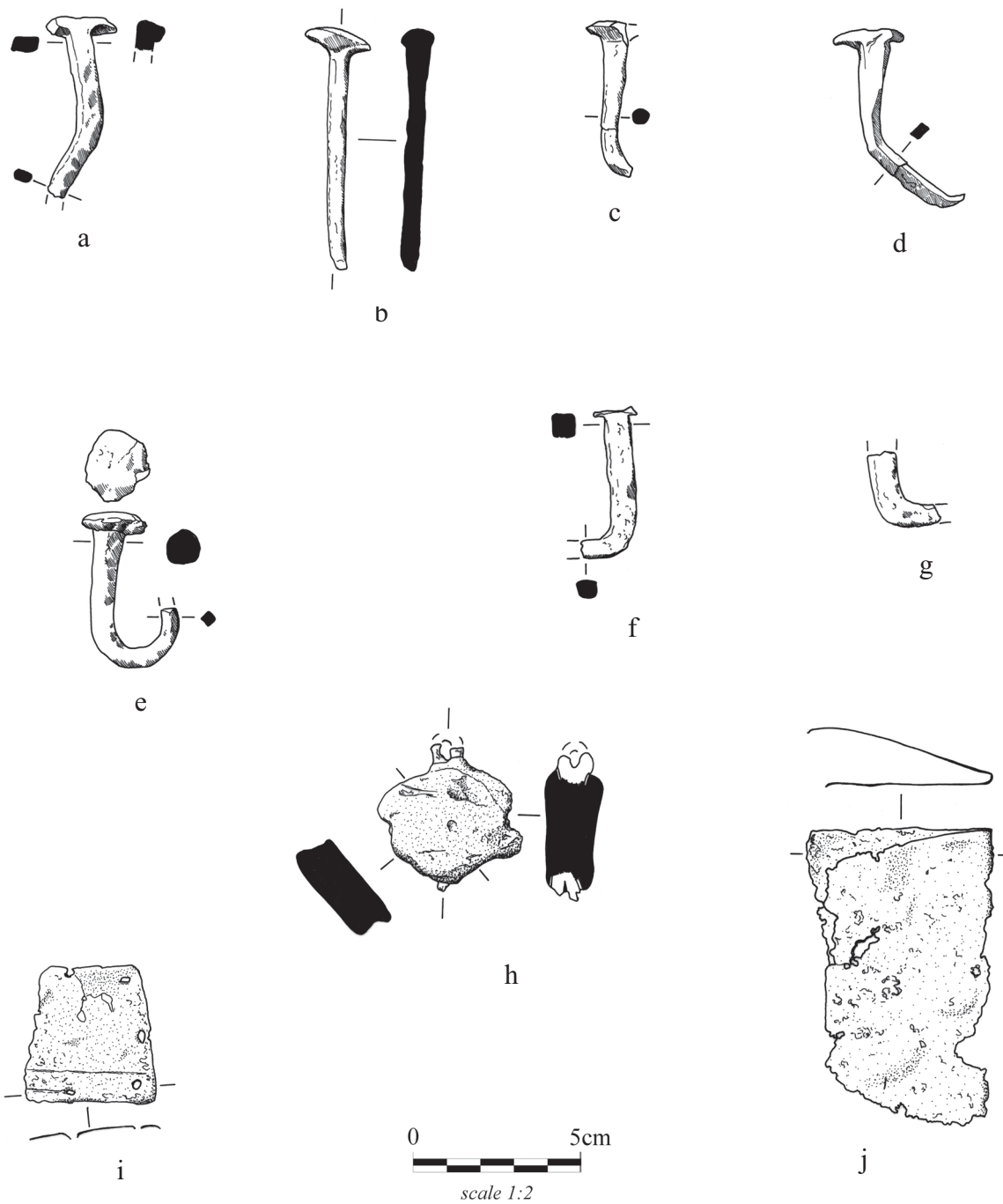


Figure A78 *Metalwork hoard continued (context 334):*
a SF112.43; **b** SF112.44; **c** SF112.45; **d** SF112.47; **e** SF112.48; **f** SF112.50; **g** SF112.51;
h SF112.55; **i** SF112.57; **j** SF112.56

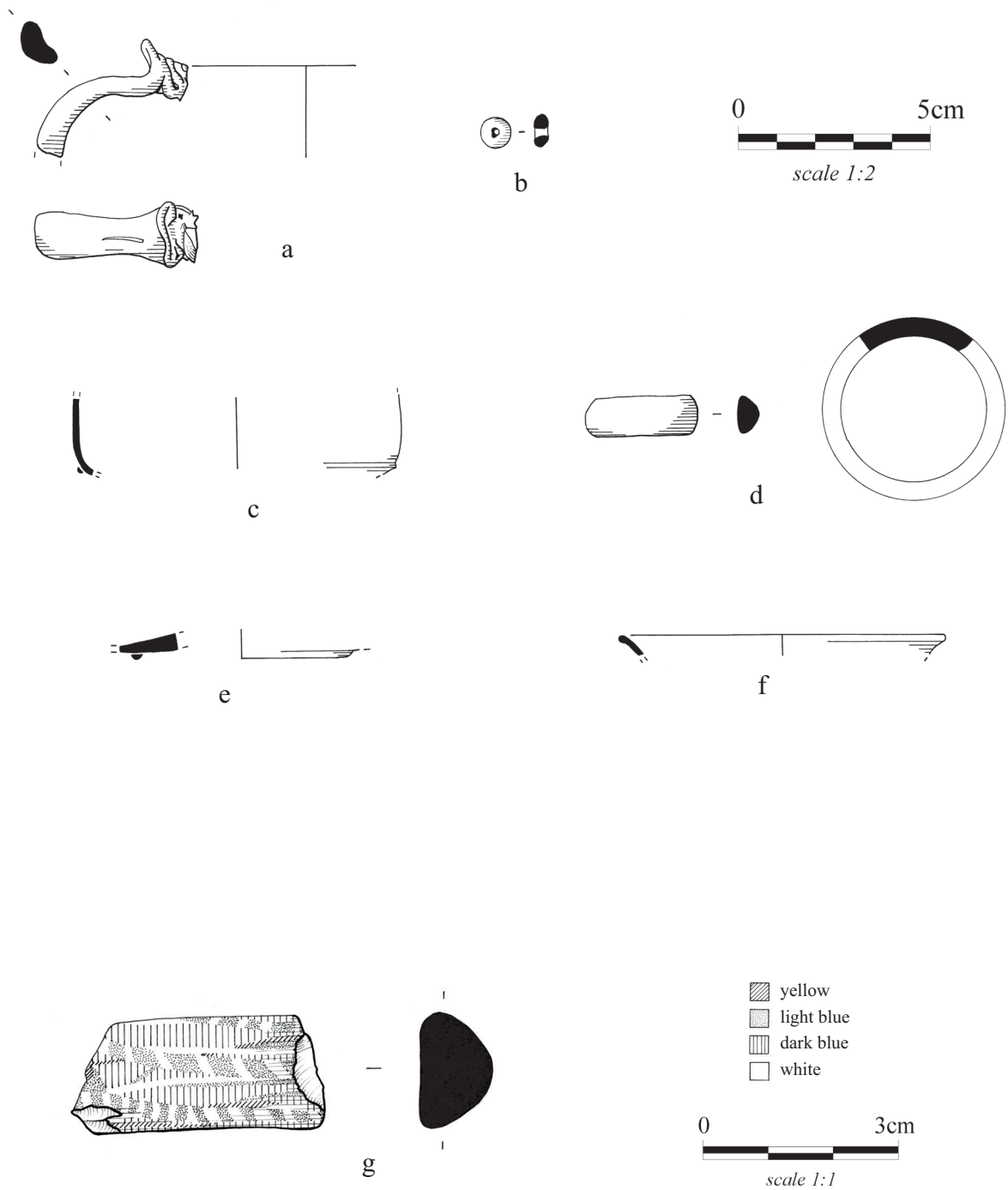


Figure A79 *Glass objects:*

a SF5, context 491; **b** SF54, 964; **c** SF63, 516; **d** SF56, 882; **e** SF60, 330; **f** SF61, 981;
g SF62, 1474

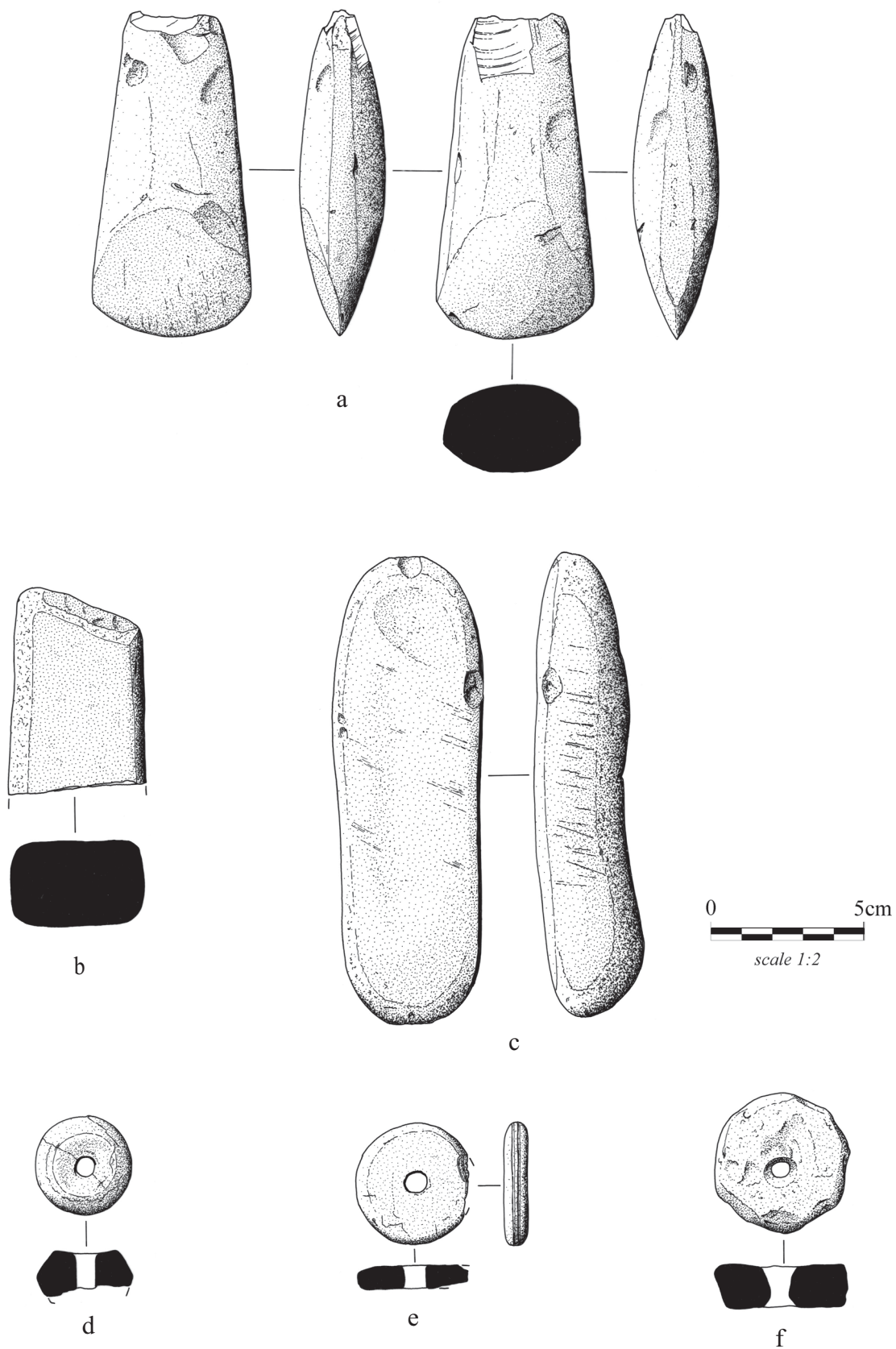


Figure A80 *Worked stone objects:*

a SF196, context 797; **b** SF197, 2; **c** SF200, 2; **d** SF202, 1242; **e** SF203, 668; **f** SF204, 1242

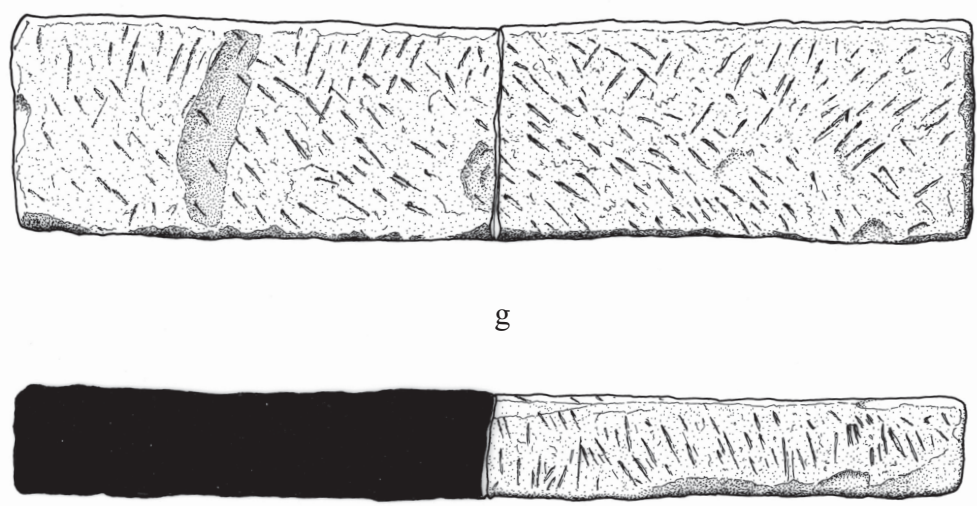
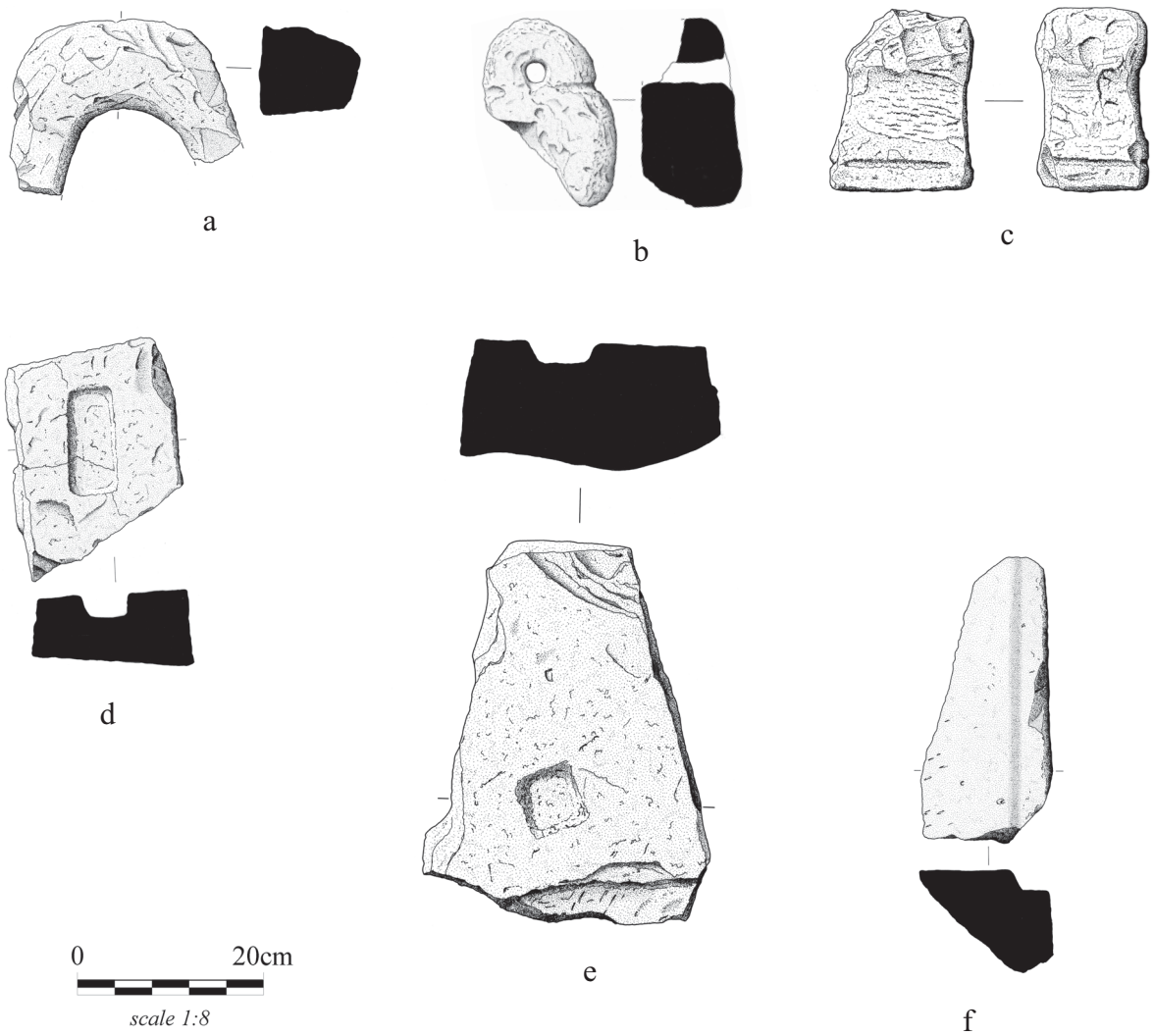


Figure A81 *Worked stone objects continued:*
a SF205, context 1278; **b** SF206, 1463; **c** SF207, 318; **d** SF208, 1337; **e** SF210, 236; **f** SF19, 856; **g** SF212, 1227

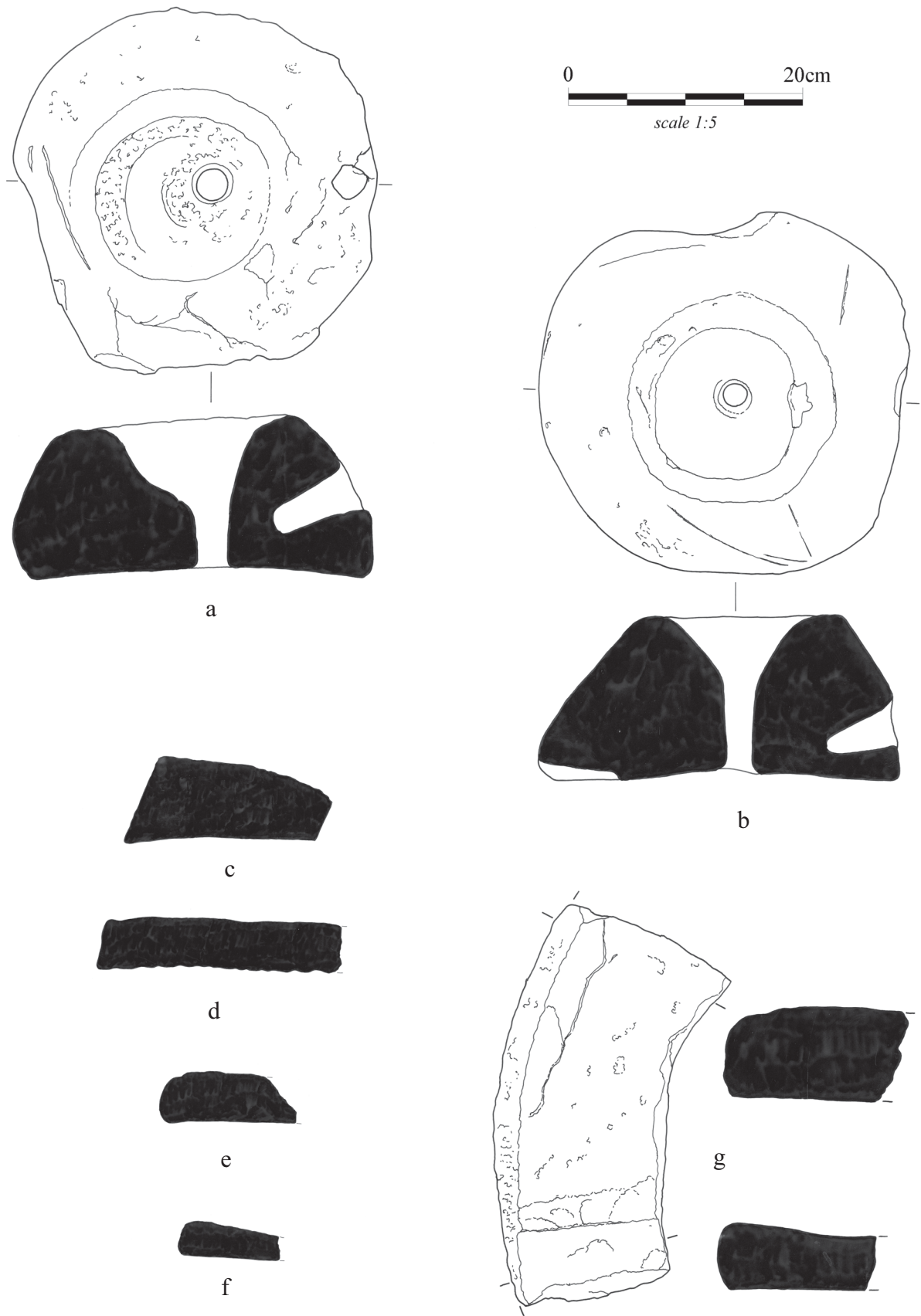


Figure A82 *Querns*:
a Quern 4, context 782; **b** Quern 5, 720; **c** Quern 6, 236; **d** Quern 7, 787; **e** Quern 11, 879;
f Quern 10, 1092; **g** Quern 8, 994

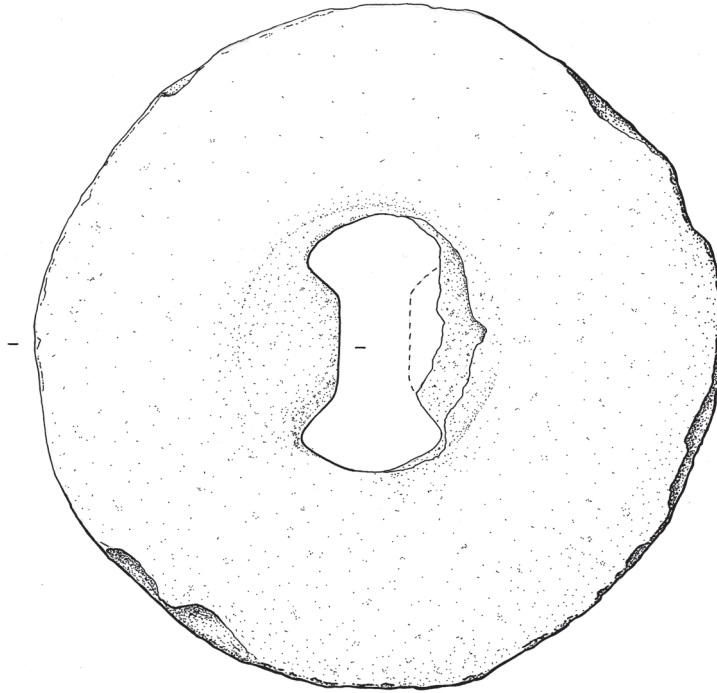


Figure A83 *Millstone:*
Quern 12, context F324