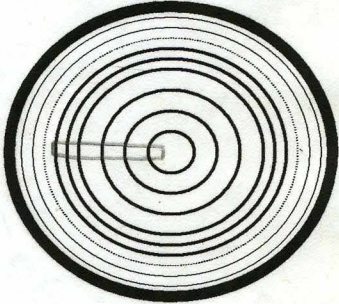


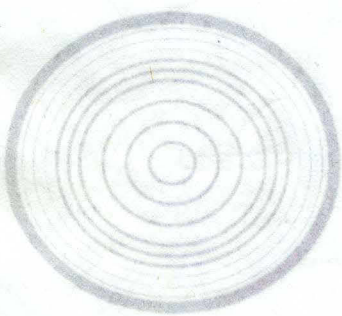
DB 11/2/18

Cow Tag <u>111</u>		Function Code <u>526.3A</u>
Brief Description: [timber element, p/s, condition, fragments] <u>NEAR COMPLETE PLANK, BROKEN AT STERN END CENTRE UPPER EDGE ALSO BROKEN</u>		
Notable Features: [tool marks, scribed lines, decoration, repairs] POINTS TO LOOK OUT FOR WHEN RECORDING ufos <u>SCRIBED LINES AT 3rd TREEMAIL FROM BOW. - SNIT 3mm PIN</u> <u>Rounded depression adjacent to treemail - failed engraving?</u> <u>- see attached diagram. Many indentations on inboard face. Why?</u> <u>See also 456 - two frags probably from aft area adjacent to pile.</u> <u>Cut into 3 pieces due to flimsiness 2803 + 2804</u> <u>see sketch on reverse</u>		
Wood Science: [rings, ARW, knots, sapwood, conversion] <u>Occasional small knots. Pith <del>at</del> at upper edge (based on age trend). Marked age trend with aw for 1st decade of 5.5mm</u> <u>At forward end c 90H aw = 202/90.</u> <u>True radial.</u>		
Recommended action: [samples, additional photos, moulding, queries and problems]		
Cleaned:	Recorded: <u>25/10/07 LBR</u>	Photos:
Checked: [corrections needed] <u>NN. Scribe aft end inboard</u>	Initials & Date: <u>1/6/5 + 23/1/7</u>	
Corrections Done [desktop, Faro Arm?]:	Initials & Date:	

CODING ISSUES!!!  
ms 17/10/7

recorded to 526.3 rather than 526.3A  
Rhino file updated

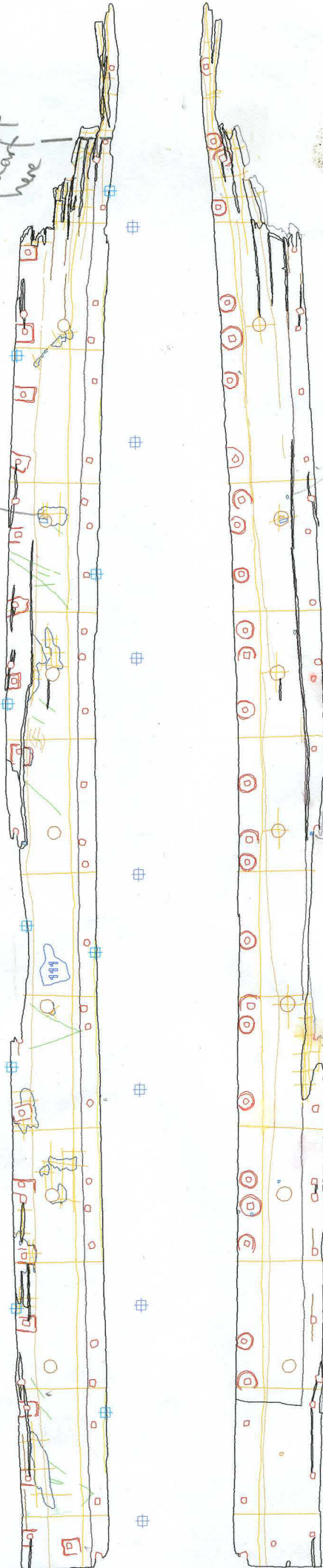
DB 11/5/12

Connections Done [desktop, Fario Amn?]		Initials & Date:
Checked: [connections needed]		Initials & Date: 11/5/12 + 11/11/12
Cleaned:	Recorded:	Photos:
		
<p>2803</p> <p>2804</p> <p>401</p>		
<p>111</p>		
<p>Forward</p>		

4562

rounded depression  
- faded auger?

Needs  
line of  
scarf  
here



COWTAG  
III

III

S263