

DB 12/2/8 P10.1

Cow Tag 169 Function Code ~~P10.1~~ ~~P10.2~~

Brief Description: [timber element, p/s, condition, fragments]

Short section of gte end - inc. scry.

Notable Features: [tool marks, scribed lines, decoration, repairs] POINTS TO LOOK OUT FOR WHEN RECORDING ufos

1.B - Possible T-1 line < 10cm gte of cow tag - out level

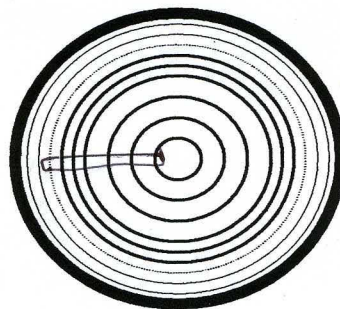
0.B -

Fits into forward scart of 210 (P10.1A)

- recode? - recoded as P10.1, and 210 -> P10.2A

Wood Science: [rings, ARW, knots, sapwood, conversion]

c 80H + 2S, P.H. beyond upper edge - Radial
ARW = 178/82



Recommended action: [samples, additional photos, moulding, queries and problems]

Recoding on this stake maybe necessary.
Please check? etc to match with B&W material ✓

Cleaned:

30/08/06 JS

Recorded:

07/09/06 JS

Photos:

Checked: [corrections needed]

✓

Initials & Date:

NN 8/9/06

Corrections Done [desktop, Faro Arm?]:

Initials & Date: