

THE METALWORK

The metal objects are catalogued first by period, Roman, medieval and post-medieval or else uncertain. They are then classified by the material out of which they were made (copper alloy, iron and lead), and then by the finds number (eg. Ae 10, Fe 3). Dimensions are shown and context numbers by trench (CAT G or H) are indicated, as is the phasing.

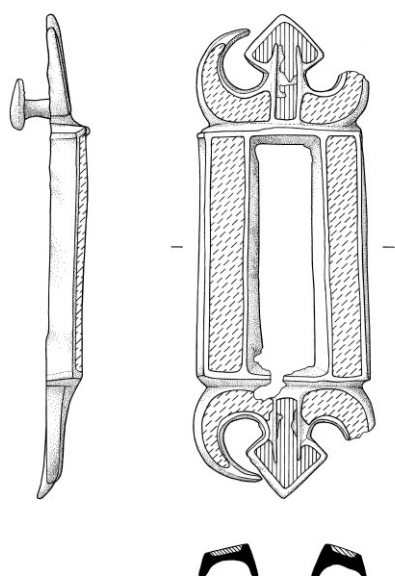
ROMAN ITEMS

The following objects are definitely or probably Roman in date. No attempt is made here to discuss these items except that many can be matched by finds from elsewhere in Carlisle, Hadrian's Wall and other northern forts and towns across Roman Britain (Summerfield 1997; Howard-Davis et al. 2000; 2009; Padley 1991; Padley et al. 2000; Allason-Jones 2009; Collins and Allason-Jones, 2010).

Copper alloy

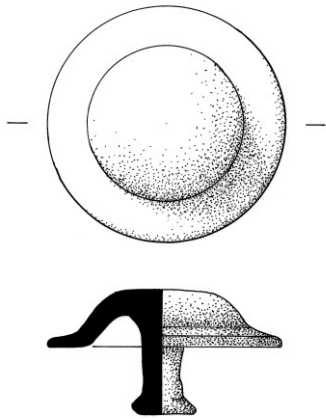
Ae 3 Belt plate (illus. below). Rectangular, open in centre and with a triangular knob projecting at each end. The knobs are flanked by horns. The sides and horns are filled with a discoloured enamel whilst the triangular knobs are inlaid with blue enamel. A single rivet for attachment to a belt survives on the back.

L. 82 mm W. 29 mm Th. 6 mm, CAT H 010 Phase Unstratified



Illus. 12. Belt plate Ae 3

Ae 7 Stud (Illus.13). Complete circular stud with narrow flat brim and a central raised dome.
The reverse has a round concave area in the middle with a central, circular, thick shaft.
Dia. 23 mm Th. 13 mm, CAT G 003 Phase 5



Illus. 13. Stud Ae 7

Ae 7 Strip. Incomplete curved strip which tapers from the wider centre to the ends which are both broken.

L. 26.5 mm W. 11 mm Th. 1 mm, CAT H 016 Phase 1

Ae 8 Object. Incomplete. The visible part consists of a curved arc of metal with a trapezoidal section, together with a second arc which has a flat rectangular section and a roughly diamond-terminal. The reverse of the object has a layer of partly crushed and corroded shiny metal.

L. 30 mm W. 21.5 mm Th. 10 mm, CAT H 016 Phase 1

Ae 10 Stud cap. Shaped fitting with a small, flat, circular base with four rectangular arms extending vertically from it. The top of each arm turns outwards at a right angle forming a cross shape.

L. 13.5 mm W. 13.5 mm Th. 8 mm, CAT G 017 Phase 5

Ae 12 Stud. Rosetta-shaped fitting with a small central hole. The stud is convex and has six flat faces, each sloping down and away from the centre, and with a semi-circular end. There is a large round hole through the centre of one of the faces. The reverse is concave.

L. 17 mm W. 15 mm Th. 6 mm, CAT G 017 Phase 5

Ae 131 Spur. Spur with both rivets, prick and part of the hook missing. The two arms are of different lengths, one being 54mm long, the other 73mm. They both have a trapezoidal section and have disc-shaped terminals with a central round rivet hole. The heel plate is roughly decorated and has a square central hole where the prick would have fitted. The hook above is slightly chipped.

L. 127 mm W. 35 mm Th. 10 mm, CAT G 036 Phase 3

It is possible that this prick spur is late Roman in date. Cool notes that such items are rare throughout the empire and they are not necessarily to be associated with military activity (Cool 2010, 4). Where they occur in Britain they tend to be associated with late Roman assemblages.

Ae 167 Stud. Six-lobed ornamental stud with a raised circular boss in the centre. Each of the six surrounding petals is raised and rounded. The reverse is hollow and concave with a slight flange around the edge and a central stem with a circular section.

L. 15 mm W. 15 mm Th. 6 mm, CAT G 147 Phase 4

Ae 186 Ring. Finger ring with angled A-shaped section. The inner surface ring is smooth and flat.

Dia. (ext) 20 mm Dia. (int) 15 mm Th. 3 mm, CAT G 082 Phase 1f

Ae 197 Stud. Six-lobed ornamental stud with a raised circular boss in the centre. Each of the six surrounding petals is raised and rounded. The reverse is hollow and concave.

L. 15 mm W. 14 mm Th. 5 mm. CAT G 001 Phase 6/Unstratified. Possibly Roman.

Ae 201 Disc. Irregular disc, probably a Roman coin but with no visible legend or decoration.

Dia. 15 mm Th. 2 mm, CAT G 213 Phase 1i

Ae 225 Split pin. Pin broken into two pieces made from a rectangular-sectioned strip bent double and the fold opened up to form a tear-shaped loop. The ends then close again and run parallel to the broken end.

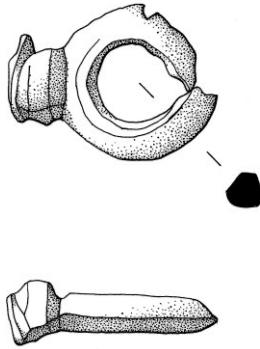
L. 19 mm W. 12 mm Th. 8 mm, CAT G 213 Phase 1i

Ae 258 Possible stud. Very corroded hemispherical object with a white powdery substance coating the flat surface.

Dia. 16 mm Th. 10 mm, CAT G 265 Phase 1f

Ae 263 Fitting (Illus. 14). Incomplete fitting consisting of a circular loop with a hexagonal section and a small semi-cylindrical knob which protrudes from it. The loop is broken in one place and split in another, and the end of the knob is broken.

L. 21 mm W. 16 mm Th. 7 mm, CAT G 082 Phase 1f



Illus. 14. Fitting Ae 263

Ae 265 Seal box. No details recorded.

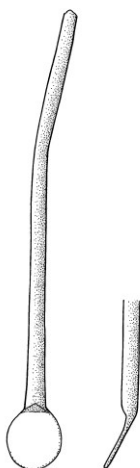
L. 31 mm W. 19 mm Th. 6 mm, CAT G 281 Phase 1

Ae 266 Spoon/probe. Complete toilet implement with an octagonal-sectioned shank widening to an elongated bulbous probe at one end, and to a long, narrow, deep bow at the other. The whole is bent into a rough O-shape. There are two small flanges dividing the plain shaft from each decorative end.

L. 177 mm W. 10 mm Dia. (of shank) 3 mm, CAT G 301 Phase 1

Ae 267 Ointment scoop (Illus. 15). Fragment of a toilet implement with a flat, circular head set at an angle to a plain, circular-sectioned shank. The shank is very slightly bent.

L. 53 mm W. 6 mm Th. (of shaft) 2 mm, CAT G 301 Phase 1



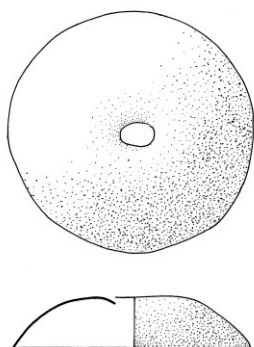
Illus. 15. Ointment scoop Ae 267

Ae 268 Possible brooch.

L. 19 mm W. 17 mm Th. 9 mm L. (of pin) 26 mm, CAT G 301 Phase 1

Ae 271 Possible stud (Illus. 16). Circular object, domed and hollow, which has a slightly flattened top with a small rectangular hole punched through the metal from above. This may have held some kind of shaft.

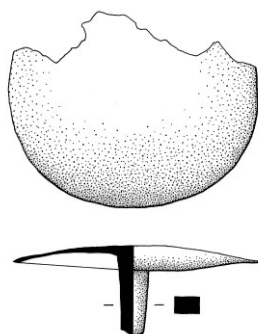
Dia. 26 mm Th. 6 mm, CAT G 321 Phase 1a



Illus. 16. Possible stud Ae 271

Ae 272 Stud (Illus. 17). Originally circular, approximately two thirds survives. The remainder is slightly convex and hollow with a central square-sectioned shaft.

L. 31 mm W. 25 mm Th. 10 mm, CAT G 301 Phase 1



Illus. 17. Stud Ae 272

Ae 273 Brooch. Incomplete trumpet-headed brooch: Collingwood type Sii. The foot, part of the cast head-loop, and the pin are missing. The spring is separate and has five coils and an internal chord. It is housed in a cowl, and is held in position by a separate axial bar. The ends of the bar can be seen in the sides of the head. The bow rises from the rear of

the head, and has a solid flattened oval section. The central ornament is pelta-shaped, and damaged on one side. The rear of the bow is roughly pentagonal in section, and the junction with the catchplate is visible on the underside, starting behind the central ornament.

L. 24 mm W. 19 mm Th. 5 mm, CAT G 301 Phase 1

Ae 274 Spatula/probe. Complete toilet implement with an octagonal-sectioned shank widening to an elongated bulbous probe at one end and to a flat leaf-shaped spatula at the other. To form the spatula shape, the shank of the object widens from the central octagonal section to become rectangular. The blade itself is separated by a complex shoulder which is initially almost at right angles to the edge of the shank. It then flares out in a concave curve which is set at a sharp angle to the initial shoulder and finished with a second concave curve which flows into the base of the blade proper.

L. 165 mm W. (of spatula) 13 mm Dia. (of shank) 3 mm, CAT G 320 Phase 1a

Ae 275 Clasp. Roughly rectangular clasp. One side is plain and the reverse has two fittings attached. One is a small loop at one end of the clasp. The other is a loop formed by a narrow strip attached to the clasp and running down the centre of it for about half its length. It loops upwards then down again to lie parallel and adjacent to the clasp.

L. 53 mm W. 21 mm Th. 4 mm, CAT G 302 Phase 1c

Ae 276 Possible strigil handle. Complete handle, bent into a rough U-shape. The object is constructed from two strips held connected by means three ribs, one at each end, and one in the middle. Both sides are slightly waisted. At one end there is a small oval hollow in what must be the upper strip where the handle merges into the blade of the strigil.

L. 122 mm W. 16 mm Th. 10 mm, CAT G 301 Phase 1

Ae 279 Possible stud. Made from two domed and hollow halves joined together to form a lens shape. A short length of square-sectioned shaft links the two halves.

L. 15 mm W. 8 mm Th. 6 mm, CAT G 285 Phase 1e

Ae 280 Object formed from a length of A-sectioned strip, round to form a hook shape. The end of the shorter of the two arms is flattened and narrows to a slight waist, and is flared on both sides and narrows again to form a point. The longer arm is broken, but flares and flattens from the D-section.

L. 23 mm W. 10 mm Th. 6 mm, CAT G 301 Phase 1

Ae 283 Possible ferrule. Thick, slightly tapering, cylindrical object, broken at its wider end.

The object is hollow, with a clear circular section at the broken end, tapering to a rectangular section at the opposite end.

L. 29 mm W. 10 mm Th. 7 mm, CAT G 284 Phase 1f

Ae 285 Possible buckle pin. Slightly tapered strip. The widest end is pointed, the opposite is almost semi-circular. In profile the object is curved at the wide end into a loose S-shape.

L. 32 mm W. 4 mm Th. 2 mm, CAT G 281 Phase 1

Ae 286 Stud. Large circular stud with a central square-sectioned shaft. The upper surface is very slightly concave.

L. 27 mm W. 25 mm Th. 12 mm, CAT G 001 Phase 6/Unstratified

Ae 289 Object, possible brooch. Roughly rectangular tapering gently from one end to the other. The upper side of the object has a central longitudinal ridge and two horizontal lines of decoration at the end. The reverse is flat with a raised central rib running along the length.

L. 32 mm W. 15 mm Th. 8 mm, CAT G 001 Phase 6/Unstratified

Ae 292 Stud. Irregularly-shaped fragment of a circular stud. The upper surface is very slightly convex with a small lump of corrosion attached. The reverse is slightly concave and has a rectangular-sectioned shaft to one side. One edge is original, being curved, while the others are broken.

L. 25 mm W. 24 mm Th. 16 mm, CAT G 001 Phase 6/Unstratified

Ae 294 Knob. Circular flat base with an outward bevel around its edge. The body of the knob then narrows diminished to form a narrow circular waist and then flares to form a circular slightly convex top. The base has a central short iron pin protruding.

L. 28 mm Dia. (base) 17 mm Dia. (top) 10 mm, CAT G 001 Phase 6/Unstratified

Iron

Fe 1 Stud. Incomplete stud with a large domed round head. Square-sectioned shaft.

Dia. 30 mm L. 30 mm, CAT G 013 Phase 3

Fe 101 Dagger. Rectangular dagger fragment with both ends broken. The fragment tapers from one end to the other, both ends having a lentoid section. The wider end flares slightly before the break.

L. 80 mm W. 30 mm Th. 12 mm, CAT G 063 Phase 5

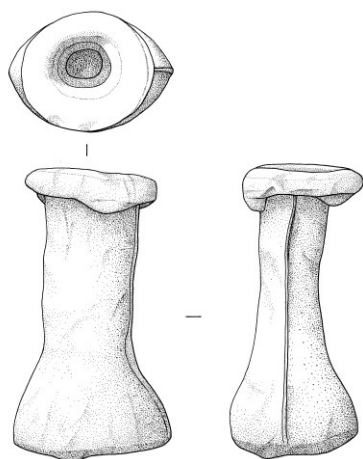
Fe 295 Roman hobnails. At least eleven hobnails found together. One survives intact and has a domed round head and a square-sectioned shaft.

D. 10 mm L. 16 mm, CAT G 284 Phase 1f

Lead

Pb 26 Object (Illus. 18). Cylindrical object hollow at one end and solid at the other. The open end is oval and flares out from a central roughly circular hole to form a rim. Shaft of object and solid end are cymbiform. The whole appears to have been moulded as there is a line round the edge of the object dividing it in half lengthways.

L. 50 mm W. 26 mm Th. 22 mm Dia. (of open end) 21 mm Dia of hole in middle 12 mm, CAT G 320 Phase 1a



Illus. 18. Object Pb 2

MEDIEVAL OR POST-MEDIEVAL ITEMS

The following objects are regarded as definitely or probably medieval or post-medieval in date. As the post-Roman levels were generally badly disturbed through grave digging activities, and as few of the objects lack diagnostic features, close dating is not possible.

Most of the items are coffin furnishings and are eighteenth or nineteenth century in date. This was a time when the most of the nave had been demolished and had reverted to being a churchyard. Coffin handles are relatively well preserved, but the condition of the coffin plates is generally poor. There was little evidence for elaborate coffin plates, breast plates or escutcheons, and where plates and handles (grips) survived they were of simple form. Many of the copper alloy buttons and some of the iron studs are also probably related

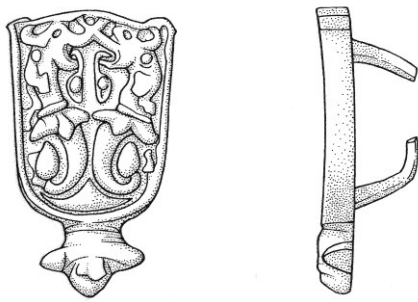
to post-medieval burials, the studs doubtless originally for affixing internal coffin linings. Much of this material was found in brick-lined graves few of which could be related to named individuals. No attempt has been made to investigate local undertaking businesses in Carlisle, as has been done, for example, at Smithfield, London and (Reeve and Adams 1993). Survival of textile linings and grave clothes was generally poor to non-existent.

Gilded brass strap mount by Caroline Paterson

Ae 203 (Illus. 19) It is parallel sided with a rounded lower end from which develops a short trilobite extension. The upper end is convex with small pointed extensions at its junction with the sides. Inside a narrow plain frame, the front face is decorated with a pair of identical confronted stylised animals. These seahorse-like creatures are “S” shaped with prominent ear lappets and extended upper jaws that cross in the centre. Extended tongues drop down in front of the animals to end in a pointed leaf-shapes. Each animal's body tapers towards the tail which also terminates ends in a pointed upturned single-lobed “leaf”. Around the waist of each animal is a trilobed collar or ruff. On the front face two rivets are concealed in the decoration, one just under the ear of each animal. On the back these are not visible, but there are two attachment spikes angling towards the centre. These are partially concealed in corrosion products.

L. 26.7 mm, W. 15.4 mm, T.9.3 mm, CAT G Unstratified

The decoration on this exotic mount is unfamiliar within the corpus of Anglo-Scandinavian metalwork, although certain elements, such as symmetrically confronted paired beasts with various lappets and foliate extensions are found in Anglo-Saxon and Anglo-Scandinavian metalwork. However, the form of this brass mount, with its trilobate extension, together with the “fleshy” appearance of its confronted beasts with their unusual neck ruffs, suggests that it may be mid to late twelfth century. Confronted “sea-horses” with foliate elements feature on a late twelfth-century leather book cover (Zarnecki 1984, 346-7), and the robust three-dimensional form of this brass mount would fit with such a date.



Illus. 19. Gilded mount Ae 203

Ae 1 Button. Round, hollow button with a convex upper side decorated with an engraved circle around its edge. The reverse is slightly crushed, and has a central fastening loop. There is also an off-centre oval puncture on the reverse.

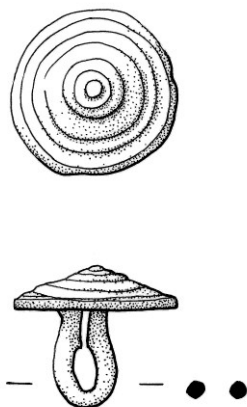
Dia. 17 mm Th. 9 mm, CAT G 001 Phase 6/Unstratified

Ae 4 Button. Complete circular button with a slightly convex surface. The reverse is flat with a central circular loop.

Dia. 18 mm Th. 10 mm, CAT H 001 Phase 6

Ae 6 Button (Illus. 20). Roughly circular object; pyramidal shape, flat on underside.

Dia. 17 mm Th. 4mm, CAT H 001 Phase 6



Illus. 20. Button Ae 6 (CAT H)

Ae 6 Button. Complete button with solid, circular, domed head decorated on the upper surface with a pattern of ridged concentric circles and a central raised boss. The reverse is very slightly concave and has a central iron fastening loop.

- Dia.13.5 mm Th. 5 mm, CAT G 003 Phase 5
- Ae 8 Button cover. Circular button cover, convex with a hollow, concave reverse.
Dia. 16 mm Th. 3 mm, CAT G 003 Phase 5
- Ae 11 Button. Circular button fragment with a flat circular top and sloping sides. The reverse is concave and corroded.
L. 9 mm W. 8 mm Th. 4 mm, CAT G 017 Phase 5
- Ae 26 Button. Small circular object, domed and hollow, probably a button fragment. The reverse has a coating of white powder, possibly a corrosion product.
Dia.15 mm Th. 5 mm, CAT G 003 Phase 5
- Ae 28 Button. No further details.
Dia. 12 mm Th. 3 mm, CAT G 001 Phase 6/Unstratified
- Ae 29 Button. Small circular button cover, slightly domed and hollow. The convex surface has a slight central dimple and the reverse has the stump of a central shaft.
Dia. 12 mm Th. 1.5 mm, CAT G 001 Phase 6/Unstratified
- Ae 30 Button. Circular button with one slightly concave side and the reverse has a central flat area and an outer flange. There are three circular holes through the middle arranged in a triangle.
Dia. 12 mm Th. 1.5 mm, CAT G 001 Phase 6/Unstratified
- Ae 80 Possible lace end. Two fragments of lace end made from a piece of thin sheeting rolled into a tube which has subsequently been crushed and broken.
L. 15 mm W. 3 mm Th. 1.5 mm, CAT G 063 Phase 5
- Ae 86 Button. Complete flat, circular button with a bevelled edge. The reverse has a central oval fastening loop. The surface of both sides of the button, and to some extent the loop, appears to be gilded.
Dia. 21 mm Th. 7 mm, CAT G 036 Phase 3
- Ae 157 Button. Complete, flat, circular button with a central oval fastening loop on the reverse. The front of the button is plain, but the back has a pattern of two concentric circles around the loop, with the inscription "DOUBLA GILT" written within.
Dia. 15 mm Th. 7 mm, CAT G 118 Phase 6
- Ae 164 Lace end. Small lace end made from a fragment of sheeting rolled into a tube. The tube tapers from one end to the other and is open at both ends.
L. 16 mm Dia. 1.5 mm, CAT G 144 Phase 4

Ae 182 Lace end. Slightly crushed lace end made from a fragment of sheeting rolled into a tube. One end is open, with the opposite end closed. The tube tapers slightly from the open end.

L. 21.5 mm Dia. 2 mm, CAT G Phase unstratified

Ae 200 Possible lace end. Short, thick length of copper alloy with a rounded and square-sectioned shaft.

L. 23 mm W. 4 mm Th. 4 mm, CAT G 130 Phase 3

Ae 267 Button. A small, complete, circular button with a central circular loop on the reverse. The front of the button is plain and convex. The reverse is slightly convex and has a bevelled edge, but is otherwise plain.

Dia. 11 mm Th. 9.5 mm, CAT G 001 Phase 6/Unstratified

Iron

Fe 1 Arrowhead. Plain triangular blade and short barbs. The tang tapers and thickens to become square-sectioned and is longer than the blade.

L. 70 mm W. 17 mm Th. 3 mm, CAT H 016 Phase 1

Fe 2 Coffin handle. A wide-angled U-shape with a circular section. The sides of the U turn inwards. The handle flares from each end towards the centre which is the thickest point. Each terminal turns outwards at a right angle and slots into a tubular fitting, thus joining the handle to the coffin. Type 1.

L. 190 mm W. 40 mm Th. 35 mm, CAT G 013 Phase 3

Fe 3 Coffin handle. As Fe 2.

L. 230 mm W. 45 mm Th. 22 mm, CAT G 013 Phase 3

Fe 5 Barrel-padlock fragment. Flat, circular padlock end-plate perforated by a sub-rectangular central key-hole.

Dia. (Ext) 24 mm Th. 2 mm Perforation: L. 15 mm W. 13 mm, CAT G 016 Phase 5

Fe 10 Coffin handle. As Fe 2 except that the central thickening in the handle has a slight peak. Grave 20. Type 2.

L. 134 mm W. 10 mm Th. 10 mm, CAT G 027 Phase 5

Fe 13 Coffin handle. As Fe 10. Grave 20.

L. 134 mm W. 18 mm Th. 13 mm, CAT G 027 Phase 5

Fe 20 Coffin handle. As Fe 10. Grave F32. Type 2.

L. 124 mm W. 17 mm Th. 12 mm, CAT G 035 Phase 5

- Fe 21 Coffin handle. As Fe 10. Grave F32. Type 2.
L. 147 mm W. 15 mm Th. 8 mm, CAT G 035 Phase 5
- Fe 22 Coffin handle. As Fe 10. Grave F32. Type 2.
L. 125 mm W. 20 mm Th. 11 mm, CAT G 035 Phase 5
- Fe 23 Coffin handle. As Fe 10. Grave F32. Type 2.
L. 124 mm W. 19 mm Th. 11 mm, CAT G 035 Phase 5
- Fe 24 Coffin handle. As Fe 10. Grave F32. Type 2.
L. 125 mm W. 20 mm Th. 10 mm, CAT G 035 Phase 5
- Fe 25 Coffin handle. As Fe 10. Grave F 32. Type 2.
L. 140 mm W. 62 mm Th. 20 mm, CAT G 035 Phase 5
- Fe 26 Coffin handle. As Fe 10. Grave F32. Type 2.
L. 123 mm W. 17 mm Th. 12mm, CAT G 035 Phase 5
- Fe 26 Coffin plate. Two large fragments of a shield-shaped plate. No design visible. Grave F 20. The largest piece measures L. 240 mm W. 170 mm Th. 6 mm, CAT G 022 Phase 5
- Fe 27 Coffin plate. Fragmentary coffin plate with stamped design of at least two angels with wings and flowing robes. Observation during excavation showed that the plate was in the shape of a heraldic shield. Grave F32.
The largest piece is L. 140 mm W. 123 mm Th. 2 mm, CAT G 035 Phase 5
- Fe 30 Coffin plate. Three fragments of a metal plate with the remains of a raised geometric design.
The largest piece measures L. 36 mm W. 24 mm Th. 2 mm, CAT G 017 Phase 5
- Fe 35 Possible coffin plate. Fragments of a decorative plating with a raised design of curved lines.
The largest piece measures L. 73 mm W. 59 mm Th. 4 mm, CAT G 017 Phase 5
- Fe 41 Coffin handle. As Fe 10. Includes fragments of a possible escutcheon plate for the handle and traces of textile. Grave F6. Type 2.
L. 125 mm W. 15 mm Th. 15mm, CAT G 006 Phase 5
- Fe 44 Fragments. Many fragments of an iron strip in a sandwich of metal on the outside with a curvilinear design, textile and wood. Grave 6.
L. 47 mm W. 27 mm Th. 5 mm, CAT G 006 Phase 5
- Fe 46 Coffin plate. Approximately seven fragments of a thin plating. No apparent decoration. Grave F6.
The largest piece is L. 52 mm W. 35 mm Th. 8 mm, CAT G 006 Phase 5

Fe 47 Coffin handle. As Fe 10. Grave F6. Type 2.

L. 122 mm W. 15 mm Th. 15 mm, CAT G 006 Phase 5

Fe 58 Coffin plate. Forty one fragments of plating, many of which are less than 10mm square. There are traces of stamped decoration, probably in the form of scrolls, on at least two of the larger fragments. Grave F50.

The largest piece is L. 50 mm W. 39 mm Th. 2 mm, CAT G 051 Phase 5

Fe 60 Possible coffin plate. Roughly rectangular fragment of thin plating with a grey coating and a raised design, probably a stamped scroll. Associated with F17(r) Grave F50.

L. 82 mm W. 35 mm Th. 6 mm, CAT G 051 Phase 5

Fe 73 Coffin handle. As Fe 10. Grave F58. Type 2.

L. 127 mm W. 17 mm Th. 15 mm, CAT G 059 Phase 5

Fe 77 Possible coffin plate. Small, roughly rectangular fragment of sheeting with a corrugated surface formed by stamped geometric/linear decoration. Grave F37.

L. 34 mm W. 29 mm Th. 2 mm, CAT G 060 Phase 5

Fe 79 Sheet or coffin plate. Seven thin, curved fragments of undecorated sheeting. Grave F 55.

L. 28 mm W. 10 mm Th. 1 mm, CAT G 056 Phase 5

Fe 80 Sheet or coffin plate. Fifteen fragments of thin, strip sheet metal. There are traces of stamped decoration visible on X-ray. Grave F 55.

The largest piece is L. 58 mm W. 51 mm Th. 1 mm, CAT G 056 Phase 5

Fe 85 Coffin plate. Twenty-four fragments of coffin plate, some with a stamped design which appears to include a double-line border with adjacent scroll. Grave F58.

The largest piece measures L. 63 mm W. 57 mm Th. 2 mm, CAT G 059 Phase 5

Fe 94 Sheet or coffin plate. Two fragments of undecorated thin, strip sheet metal. Grave F 55.

The largest piece is L. 29 mm W. 16 mm Th. 1 mm, CAT G 056 Phase 5

Fe 98 Possible coffin plate. Three fragments of metal sheet with an impressed geometric design.

The largest piece is L. 57 mm W. 31 mm Th. 5 mm, CAT G 017 Phase 5

Fe118 Coffin plate. Twelve fragments of a coffin plate bearing a stamped design consisting of a border and exterior scroll. The border consists of four broadly parallel lines. The outer three, although slightly irregular, are spaced at an average of 13 mm intervals while the inner line is inset by 30 mm. The external scroll is continuous. The field within the border was reserved for the name and other details, applied with gold paint.

The christian name, Mary, is all that can be read with certainty. The plate was shield-shaped. Grave F65.

The largest piece is L. 230 mm W. 180 mm Th. 6 mm, CAT G 066 Phase 5
Fe 124 Coffin plate. Twenty-four fragments of a decorated coffin plate, made from thin iron stamped with a design which appears to consist of scrolls. Grave F72.

The largest piece is L. 95 mm W. 55 mm Th. 2 mm, CATG 073 Phase 5
Fe 134 Coffin binding. A rectangular strip, possibly patterned, bent into a right-angle and with two small rivets. Grave 32.

L. 21 mm W. 20 mm Th. 10 mm, CAT G 035 Phase 5
Fe 151 Coffin plate. Twenty-four fragments of a coffin plate with a stamped design and traces of lettering on one piece. The letters are uncertain but may read 'CLO...'. One fragment is pierced by a screw.

The largest fragment measures L. 94 mm W. 71 mm Th. 4mm, CAT G Phase Unstratified
Fe 160 Coffin plate. Many fragments of a coffin plate with a stamped pattern of scrolls visible on some pieces. The edge of the plate is present apparently consisting of a foliate band.

The largest piece is L. 87 mm W. 58 mm Th. 2 mm, CAT G 017 Phase 5
Fe 221 Coffin handle. As Fe 2. Type 1.

L. 200 mm W. 70 mm Th. 14 mm, CAT G Phase unstratified
Fe 242 Coffin handle. Type 2.

L. 223 mm W. 17 mm Th. 17 mm, CAT G 001 Phase 6/Unstratified
Fe 246 Coffin plate. Twenty four fragments of a coffin plate showing traces of a stamped design, although indecipherable. Grave F39.

The largest piece measures L. 95 mm W. 87 mm Th. 2 mm, G 039 Phase 5
Fe 255 Coffin plate. Thirty nine fragments of a decorated coffin plate. The X-ray shows traces of a design too fragmentary to identify. Grave F14.

The largest piece measures L. 26 mm W. 22 mm Th. 5 mm, CAT G 015 Phase 5
Fe 257 Coffin handle. As Fe 262. Type 3.

L. 204 mm W. 28 mm Th. 48 mm, CAT G 258 Phase 5
Fe 262 Coffin handle. Complete handle decorated on one side with a pattern of curls and dots. Otherwise similar to Types 1 and 2. Grave F257. Type 3.

L. 205 mm W. 25 mm Th. 48 mm, CAT G 258 Phase 5
Fe 264 Coffin handle. As Fe 262. Grave F257. Type 3.

L. 190 mm W. 28 mm Th. 15 mm, CAT G 258 Phase 5
 Fe 265 Coffin handle. As Fe 262. Grave F257. Type 3.

L. 216 mm W. 28 mm Th. 52 mm, CAT G 258 Phase 5
 Fe 266 Coffin handle. As Fe 262. Grave F257. Type 3.

L. 204 mm W. 32 mm Th. 47 mm, CAT G 258 Phase 5
 Fe 267 Coffin handle. Grave 257. Type 3 but with a central decorative knob protruding from the centre of the handle.

L. 206 mm W. 26 mm Th. 29 mm, CAT G 258 Phase 5
 Fe 297 Knife blade. Back straight to a point 40 mm from the shoulder, then curves down to the tip which is at half the blade width cutting edge straight before curving up at the tip.

L. 63 mm W. 11 mm Th. 3 mm, CAT G 001 Phase 6/Unstratified

Lead

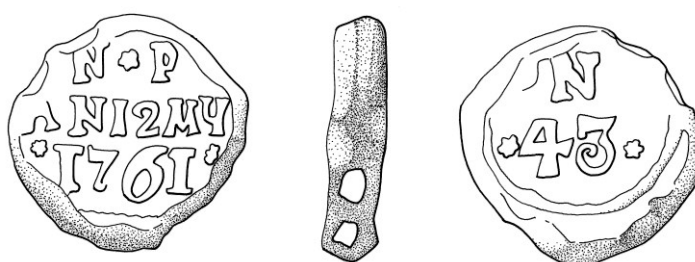
Pb 1 Seal (Illus. 21). Roughly circular seal with indented area on upper and lower surface with raised inscription within:-

Obv.: N.P. / N12MY / 1761

Rev.: N. / .43.

There are four holes in the side of the seal, two on one side and two diagonally opposite, but it is unclear whether they join or are merely shallow hollows. They were used to attach the seal in some way.

L. 27 mm W. 26 mm Th. 7 mm, Wt: 24.3g, CAT G 017 Phase 5



Illus. 21. Seal Pb 1

Pb 7 Window lead. Small hook-shaped strip fragment.

L. 48 mm W. 8 mm Th. 6 mm, CAT G 063 Phase 5

Pb 12 Possible window strip. Rectangular-sectioned strip doubled over with the two ends splayed apart.

L. 66 mm W. 7 mm Th. 5mm, CAT G 074 Phase 5

Pb 16 Window lead. L-shaped lead fragment with trapezoidal section.

L. 38 mm W. 13 mm Th. 5 mm, CAT G 074 Phase Unstratified

Pb 18 Slightly grooved rectangular sectioned strip bent into an acute angle.

L. 53 mm W. 5 mm Th. 3 mm, CAT G 261 Phase 5

Pb 24 Came. Curved, grooved fragment of window came with a small extension protruding from the concave side.

L. 47 mm W. 6 mm Th. 3 mm, CAT G 261 Phase 5

ITEMS OF UNCERTAIN DATE

Copper alloy

Ae 3 Ring. Small, circular-sectioned ring with a rough, corroded interior; polished outside.

Dia. (Ext) 15 mm Dia. (Int) 12 mm Th. 2mm, CAT G 001 Phase 6/Unstratified

Ae 4 Ring. Roughly circular flattened ring with two slight bulges on one side.

L. 27 mm W. 26 mm Th. 2 mm Dia. (Int) 19 mm, CAT G 003 Phase 5

Ae 9 Ring. Large, wide, flat ring with approximately a third of its circumference missing. It has a slightly irregular circular central hole and is smooth on one side, rough on the other.

Dia. (Ext) 42 mm Dia. (Int) 12 mm Th. 3.5 mm, CAT H 016 Phase 5

Ae 9 Fitting. An angular fitting with a basic square A-shaped back plate bearing a narrow central strip extending from the top of the A. This strip is bent over until almost parallel with the base-plate. It then flares to form a crescent-shape with its concave side attached to the strip.

L. 22 mm W. 20 mm Th. 4 mm, CAT G 017 Phase 5

Ae 10 Ring. Complete ring with a circular section. The ring is hollow, having been made from a rolled strip shaped into a circle.

Dia. (Ext) 16.5 mm Dia. (Int) 14.5 mm Th. 1.75 mm, CAT H 001 Phase 6/Unstratified

Ae 32 Strip. A roughly rectangular strip fragment, with one semi-circular end, pierced by one rivet with holes for at least four more. The whole is polished and is etched with circles and curves is a design which is symmetrical along the long axis of the object. The

design incorporates the rivet and rivet holes. A quarter of the length of the strip has been folded back on itself causing a tear across most of the width of the object.

L. 43 mm W. 21 mm Th. 1 mm, CAT G 047 Phase 5

Ae 64 Ring. Small penannular ring with very small break in the circle. It appears to have a corrosion pattern of cloth/thread spiralling round the loop. Found in grave F37.

Dia. (Ext) 16 mm Dia. (Int) 13 mm Th. 1.5 mm, CAT G 060 Phase 5

Ae 76 Fitting. Hole re-inforcer, probably from a belt, made from two rings. One ring is smaller and thicker and lies within the other. The inner ring moves freely but is not so loose as to fall out.

Dia. 10 mm Th. 2 mm, CAT G 001 Phase 6/Unstratified

Ae 79 Possible coffin fitting. One small penannular ring with two fragments of a second ring, both of which appear to have traces of textile or similar material in a spiral pattern round them.

Dia. 10 mm Th. 1 mm, CAT G 015 Phase 5

Ae 113 Strip. A flat, tapering strip with a rectangular section tapering almost to a point. Possible buckle pin.

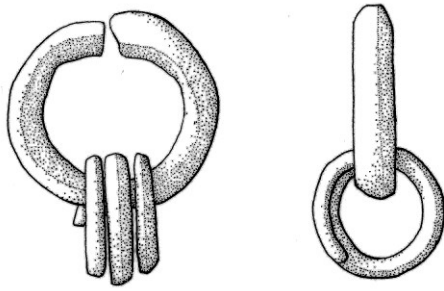
L. 30 mm W. 4 mm Th. 1 mm, CAT G 036 Phase 3

Ae 132 Knob. Decorative knob broken at one end. It is basically cylindrical with variations in diameter as the object has deeply incised grooves at irregular intervals. Only the central part of the object is exposed, both ends being covered by a mass of soil and corrosion-replaced wood.

L. 37 mm Dia. 17 mm, CAT G 036 Phase 3

Ae 168 Ring (Illus. 22). Small penannular ring with second ring made from a circular-sectioned length of metal wound round to form a spiral. This moves freely round the larger, oval-sectioned ring.

Dia. of ring (ext.) 19 mm (Int.) 12 mm Th. 4 mm; Dia. of spiral (Ext.) 12 mm Dia. (Int.) 6 mm Th. 7 mm, CAT G 128 Phase 4



Illus. 22 Ae 168

Ae 170 Decorated strap runner made from one roughly rectangular strip bent to form an incomplete rectangle. One long side forms the decorated upper side of the runner and the opposite side to this is made from the two ends of the strip bent inwards leaving a central gap. Each of these ends is punctured by a small circular hole. The complete long side is basically semi-cylindrical in shape, tapering on each side away from a central round boss and then flaring to an oval boss on each. The central boss is decorated with two parallel lines and a raised design or square dots in a rectangular grid pattern.

L. 30 mm W. 21 mm Th. 10 mm, CAT G 128 Phase 4

Ae 190 Ring. Half a circular sectioned ring, broken in antiquity.

L. 36 mm W. 2 mm Th. 2 mm, CAT G 003 Phase 5

Ae 198 Rolled tubular object with a large corroded lump attached to one end. Possibly L-shaped under the corrosion.

L. 24 mm W. 16 mm Th. 11 mm, CAT G 130 Phase 3

Ae 203 Strap end.

L. 27 mm W. 15 mm Th. 8 mm, CAT G 001 Phase 6/Unstratified

Ae 213 Hook. The object is flat, and is the shape of an isosceles triangle, with the apex extended and curled over to form the hook. There are two circular holes through the opposite end of the plate, and three evenly-spaced notches cut into the shortest side of the triangle. All three sides are bevelled.

L. 30 mm W. 15 mm Th. 1.5 mm, CAT G 001 Phase 6/Unstratified

Ae 244 Buckle fragment with remains of a D-shaped loop and part of crossbar. The oval-sectioned loop has a stepped groove along its curve.

L. 31 mm W. 30 mm Th. 2.5 mm, CAT G 261 Phase 5

Ae 247 Ring. Thick finger ring with oval section. The ring is of varying thickness with one side being much narrower with a D shaped section.

Dia. (ext) 25 mm Dia. (int) 18 mm Th. 4 mm, CAT G 177 Phase 3

Ae 251 Ring. A small oval ring with a circular section. The ring has two small bulges in one, opposite to each other, which indicate that the ring is a fitting.

L. 17 mm W. 16 mm Th. 2.5 mm, CAT G 001 Phase 6/Unstratified

Ae 262 Ring. Complete ring with thick rounded square section.

Dia. (ext) 24 mm Dia. (Int) 19 mm Th. 2 mm, CAT G Phase unstratified.

Ae 287 Possible buckle pin. A rectangular rod with an A-shaped section, tapering and slightly flattened at one end.

L. 32 mm W. 5 mm Th. 3 mm, CAT G 001 Phase 6/Unstratified

Ae 291 Hilt guard. Crown-shaped hilt guard with an elongated oval section and central oval slot. There are two tapered grooves, one at each end of the slot on the underside of the object. Around the lower edge of the guard are two narrow parallel raised lines but no other form of decoration.

L. 46 mm W. 21 mm Th. 15 mm, CAT G 001 Phase 6/Unstratified

Ae 295 Ring. Complete ring with a circular section. The ring is hollow, having been made from a rolled strip shaped into a circle.

Dia. (ext) 23 mm Dia. (Int) 18.5 mm Th. 2 mm, CAT G 001 Phase 6/Unstratified

Pins Some 174 pins out of 295 recorded copper alloy objects, or 58.99% were recovered from the trench G, and none from trench CAT H. A small number were embedded in textile and unavailable for study, or else have been lost. Some 167 pins remain (55.6% of all copper alloy small finds) and are listed in the site archive. The pins were classified according to completeness, length, shaft diameter, head form, textile associations and contextual/phase data. Seven head forms were identified:- round, spiral, coil, rounded, spiral coil, flat, oblate, oval, and disc. Further details can be found in the site archive.

In addition to the copper alloy items listed above there are a number of fragments of ‘fittings’, discs, wire loops, sheeting mostly, but not entirely, from phases 5 and 6, or else were unstratified. In all cases the nature of the object is unknown. The finds numbers are recorded below and further information is available in the site archive.

Trench G: Ae numbers 2, 23, 37, 81, 85, 103, 114, 135, 156, 161, 180, 184, 193, 195, 196, 205, 206, 210, 211, 231, 242, 248, 250, 256, 261, 281, 290, 293

Trench H: Ae numbers 1, 5, 11

Iron

Fe 50 Horseshoe. Wide horseshoe fragment with a rectangular section, and four evenly-spaced rectangular holes along the outside edge.

L. 173 mm W. 36 mm Th. 10 mm, CAT G 001 Phase 6/Unstratified

Fe 87 Screws. Three screws in a collection of fifty five nails found surrounding the skeleton in grave 37. Three other screws found in graves 65 and 72.

CAT G 060 Phase 5

Fe 99 Hook. Square-sectioned rod tapering to a point at each end. The object is bent into a right angle about a fifth of the way along it, and from the bend the short arm curves back towards itself to form a hook.

L. 175 mm W. 12 mm Th. 11 mm, CAT G 063 Phase 5

Fe 108 Possible adze. Tapered trapezoidal object thicker at one end than the other. Ends broken.

L. 51 mm W. 29 mm Th. 11 mm, CAT G 063 Phase 5

Fe 116 Possible horseshoe fragment. Narrow, curved object with a rectangular section. An X-ray seems to show central holes along its length.

L. 65 mm W. 25 mm Th. 17 mm, CAT G 066 Phase 5

Fe 219 Tack. Complete tack with round head and square-sectioned shaft.

Dia. (head) 10 mm L. 19 mm, CAT G 130 Phase 3

Fe 227 Possible hinge. A rectangular-sectioned thick strip bent over into an acute angle.

L. 73 mm W. 17 mm Th. 12 mm, CAT G Phase Unstratified.

Fe 278 Hook. Square-sectioned object tapering to a point at each end. The object is bent into a right angle at about a third of the way along.

L. 112 mm W. 17 mm Th. 12 mm, CAT G 213 Phase 1i

Fe 294 Possible hinge. Rectangular-sectioned strip bent into a right angle.

L. 10 mm W. 25 mm Th. 20 mm, G 284 Phase 1f

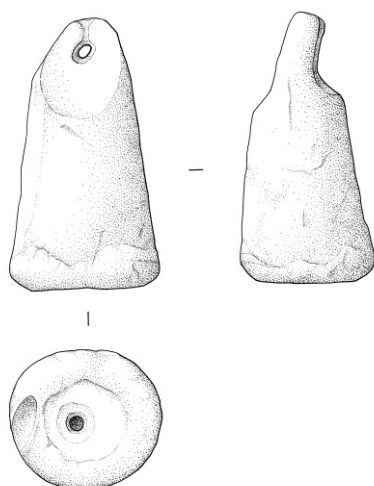
Other iron objects only identifiable to lumps, objects or fittings were recorded from various phases. They include Fe numbers 9, 11, 19, 52, 84, 109, 148, 195, 204, 238, 239, 243, 268, 269, 271, 279, 280, 281, 282. Some are stratigraphically Roman in date including Fe 268, 269, 281, 282.

Nails

One hundred and ninety-six nails were individually recorded. The nails are listed in the site archive. The nails were mostly complete with a typical length of 43 mm and a section 3 mm square. They had flat, square heads. Five types of head were defined, oval, rectangular, round, rounded square and square. Fiddle-key-headed nails typically used with horseshoes were conspicuous by their absence. Most of the nails were associated with coffins but those associated with phases 1 and 3 are probably Roman and related to structural timberwork.

Lead

Pb 1 Plumb bob (Illus. 23). Oval object with hole punched through one end. The opposite end is crumpled as if heavy pressure has been applied or the object dropped. One side of the object is decorated with a pattern of diagonal crosses arranged in horizontal lines. L. 28 mm W. 21 mm Th. 11 mm, CAT H 001 Phase 6



Illus.23. Plumb bob Pb 1 (CAT H)

Pb 2 Plumb bob or weight. Roughly conical, the point of the cone has been flattened and a hole punched through. There is evidence of the object having been suspended from this hole as there are worn grooves above it. The base of the cone has a central deep indentation.

H. 46 mm Dia. 25 mm, Wt: 122.1 gr., CAT G 017 Phase 5

- Pb 3 Possible weight. Flat object shaped as an irregular hexagonal prism with a central perforation. One side is flat and plain while the other is decorated with a 'pie crust' pattern formed by radiating raised spokes.
L. 20 mm W. 20 mm Th. 9 mm, Wt: 22 gr., CAT G 017 Phase 5
- Pb 3 Disc. Small disc with raised edges making the centre of each side slightly concave.
Dia. 12 mm Th. 1.5 mm, Wt: 1.4 gr., CAT H 001 Phase 6
- Pb 6 Possible weight. Rectangular object with a rounded square section. Each rectangular face has an oval concave area in the centre.
L. 20 mm W. 13 mm Th. 13 mm, Wt: 28 gr., CAT G 001 Phase 6/Unstratified
- Pb 11 Object. Crumpled object made from shaped sheeting of varied thickness giving some areas of thick solid lead. The oval base of the object is hollow from which a small glass bead was recovered.
L. 90 mm W. 75 mm Th. 45 mm, CAT G 036 Phase 3
- Pb 17 Object. Folded square fragment of sheet lead.
L. 54 mm W. 34 mm Th. 13 mm, CAT G 17 Phase unstratified
- Pb 21 Object. Roughly circular, flat object with slightly off-centre hole. Rougher on one side than the other.
L. 14 mm W. 12 mm Th. 3 mm, CAT G 121 Phase 4
- Pb 25 Object. Large folded flat lump of lead, possibly originally square.
L. 73 mm W. 54 mm Th. 15 mm, CAT G Phase unstratified
- Pb 27 Object made from a rectangular strip tightly rolled into a tube.
L. 27 mm W. 15 mm Th. 13 mm, CAT G 001 Phase 6/Unstratified
- Pb 28 Object. Rectangular fragment of sheet lead with a tapered, square-shafted nail through the centre and one end of the sheet folded over the nail head. Possibly modern.
L. 30 mm W. 19 mm Th. 27 mm, CAT G 001 Phase 6/Unstratified

BIBLIOGRAPHY

- ALLASON-JONES, L. 2009. The Small Finds, in A.Rushworth, *Housesteads Roman Fort – The Grandest Station: Volume 2 The Material Assemblages*, 430-87, Swindon: English Heritage Archaeol. Reps.
- COLLINS, R. AND ALLASON-JONES, L. 2010. *Finds from the Frontier: Material Culture in the 4th and 5th centuries*, York: Counc. Brit. Archaeol. Res.Rep **162**
- COOL, H.E.M. 2010. A Different Life, in R. Collins and L. Allason-Jones (eds.) *Finds from the Frontier: Material Culture in the 4th–5th Centuries*, 1-9, York: Counc. Brit. Archaeol. Res. Rep. **162**.
- HOWARD-DAVIS, C., OLIVIER, A., SHOOTER, D AND WHITWORTH, A. 2000. Metalwork, in K.Buxton and C.Howard Davis (eds.) *Bremetanacum: Excavations at Roman Ribchester 1980, 1989-90*, Dorchester: Lancaster Imprints **9**, 227-78
- HOWARD-DAVIS, C. L. E. 2009. *The Carlisle Millennium Project: Excavations in Carlisle, 1998-2001. Volume 2: Finds*, Lancaster: Lancaster Imprints **15**
- PADLEY, T.G. 1991. *Fascicule 2: The Metalwork, Glass and Stone Objects from Castle Street, Carlisle: Excavations 1981-2*. Kendal: Cumberland Westmorland Antiq. Archaeol. Soc. Res. Rep **5**.
- PADLEY, T.G. 2000. The Finds, in M.R.McCarthy, *Roman and Medieval Carlisle: the Southern Lanes*, 93-121, Kendal: Carlisle Archaeology Ltd/University of Bradford
- POTTER, T. 1979. *Romans in North-West England: Excavations in the Roman Forts of Ravenglass, Watercrook and Bowness on Solway*, Kendal: Cumberland Westmorland Antig. Archaeol. Soc. Res. Ser., **1**.
- SUMMERFIELD, J. 1997. The small finds, in T.Wilmott, *Birdoswald: excavations of a Roman fort on Hadrian's Wall and its successor settlements, 1987-92*, 269-320, London: English Heritage Archaeol. Rep. **14**.
- REEVE, J. AND ADAMS, M. 1993. *The Spitalfields Project: Volume 1: the archaeology. Across the Styx*. York: Counc. Brit. Archaeol. Res. Rep. **85**
- ZARNECKI, G. 1984. Metalwork, in *English Romanesque Art 1066-1200: Hayward Gallery, London 1984*, London: Arts Council for Great Britain