

# CHESHIRE HISTORIC TOWNS SURVEY

## Knutsford

### Archaeological Strategy



2003



CHESHIRE HISTORIC TOWNS SURVEY



# **Knutsford**

## **Archaeological Strategy**

2003

Environmental Planning  
Cheshire County Council  
Backford Hall  
Backford  
Chester  
CH1 6PZ

*These reports are the copyright of Cheshire County Council and English Heritage. We would like to acknowledge the assistance of Dr Chris Lewis, University of Liverpool; Mr R E Birkett of the Macclesfield Historical Society and Mr J T Bever, G P Walker and Mrs N Morton of the Wilmslow Historical Society, in the preparation of these reports. The archive is held by the Cheshire County Sites and Monuments Record.*

*The Ordnance Survey mapping within this document is provided by Cheshire County Council under licence from the Ordnance Survey, in order to fulfil its public function to make available Council held public domain information. The mapping is intended to illustrate the spatial changes that have occurred during the historical development of Cheshire towns. Persons viewing this mapping should contact Ordnance Survey copyright for advice where they wish to licence Ordnance Survey mapping/map data for their own use. The OS web site can be found at [www.ordsvy.gov.uk](http://www.ordsvy.gov.uk).*

# Knutsford: Area of Archaeological Potential

## 1. Introduction

- 1.1 An Area of Archaeological Potential (AAP) was defined in 1997 and included in the Adopted Macclesfield Borough Local Plan, 1997. This AAP has now been redefined, and three Archaeological Character Zones (ACZs) have been identified within it. Each Zone is identified by its defining archaeological or historical characteristics, or *Primary Characteristics*. For example, in the Lower Knutsford Historic Core (Archaeological Character Zone 3), the defining characteristics include the medieval borough, medieval market place, and the site of a medieval Chapel of Ease and a Grammar School.
- 1.2 Each Archaeological Character Zone may also include sites and features which are not characteristic of the Zone but are nonetheless of archaeological and historical importance, and these are identified as *Secondary Characteristics*. For example, Archaeological Character Zone 3 includes a number of buildings that date from the 17th century onwards, including the church of St John the Baptist built in 1744, that have been identified as a Secondary Characteristics.
- 1.3 The list of characteristics is not exhaustive, and it is possible that other types of important archaeological remains and features exist within each Archaeological Character Zone. The boundaries of the AAP and the Archaeological Character Zones, and the list of Primary and Secondary Characteristics are intended as a guide for planners and developers. They are based on current knowledge, and are therefore subject to change as new information is revealed.

## 2. Existing Designations (Figure 1)

<b>Scheduled Ancient Monuments</b>	Two – Former church of St John (or St Helena's Chapel) and burial ground (SAM 25728) and Norbury Booths Hall, moated manor house (SAM 13449).
<b>Listed Buildings</b>	Grade I – One: Unitarian Chapel, King Street Grade II* – Seven: Sessions House, St John's Church, St Cross's Church, Bexton Croft House, 98 and 125 King Street, Former King's Coffee House and Gaskell Memorial Tower. Grade II – 68
<b>Conservation Areas</b>	Two – Knutsford town centre and Legh Road.
<b>Registered Parks and Gardens</b>	One- Tatton Park (Number 1477; Grade II*).

## 3. The Archaeological Character Zones (Figure 2)

### Zone 1: Cross Town

Primary Characteristics	
<b>Medieval Settlement?</b>	Cross Town is the possible location of medieval settlement, prior to the creation of the borough of Lower Knutsford c 1292.
<b>Medieval Market?</b>	The discovery of a cross base has led to the suggestion that Cross Town was the site of a medieval market.

Secondary Characteristics	
Post Medieval Settlement	In 1858, population pressure led to the creation of the separate parish of St Cross. The church of St Cross was built in 1880-1.

### Zone 2: Nether Knutsford Historic Core

Primary Characteristics	

<b>Medieval Settlement</b>	A borough charter was granted to Nether Knutsford in 1292, and King Street in particular is lined with numerous long, narrow property plots, typical of medieval burgages.
<b>Medieval Market Place</b>	A market charter was granted to Lower Knutsford in 1292. The triangular market place was located to the west of the town, widening out into the Heath. A second medieval market place may have been located on King Street.
<b>Medieval Chapel of Ease and Grammar School</b>	A medieval Chapel of Ease is recorded on King Street, with an adjoining school house.

Secondary Characteristics	
Post Medieval Settlement	A large number of post medieval buildings survive in this Zone, many of which are Listed. On King Street there are buildings that date back to the 16th and 17th centuries.
Church of St John the Baptist	The church of St John was built in 1744.

### **Zone 3: Over Knutsford**

Primary Characteristic	
<b>Post Medieval</b>	A number of late 19th, early 20th century large houses are located along Legh Road, a high proportion of which are Listed Grade II.

Secondary Characteristic	
Medieval Settlement?	This Zone possibly contains medieval settlement and a market place. A borough charter was awarded to Over Knutsford in 1292 and a market charter was granted in 1335.



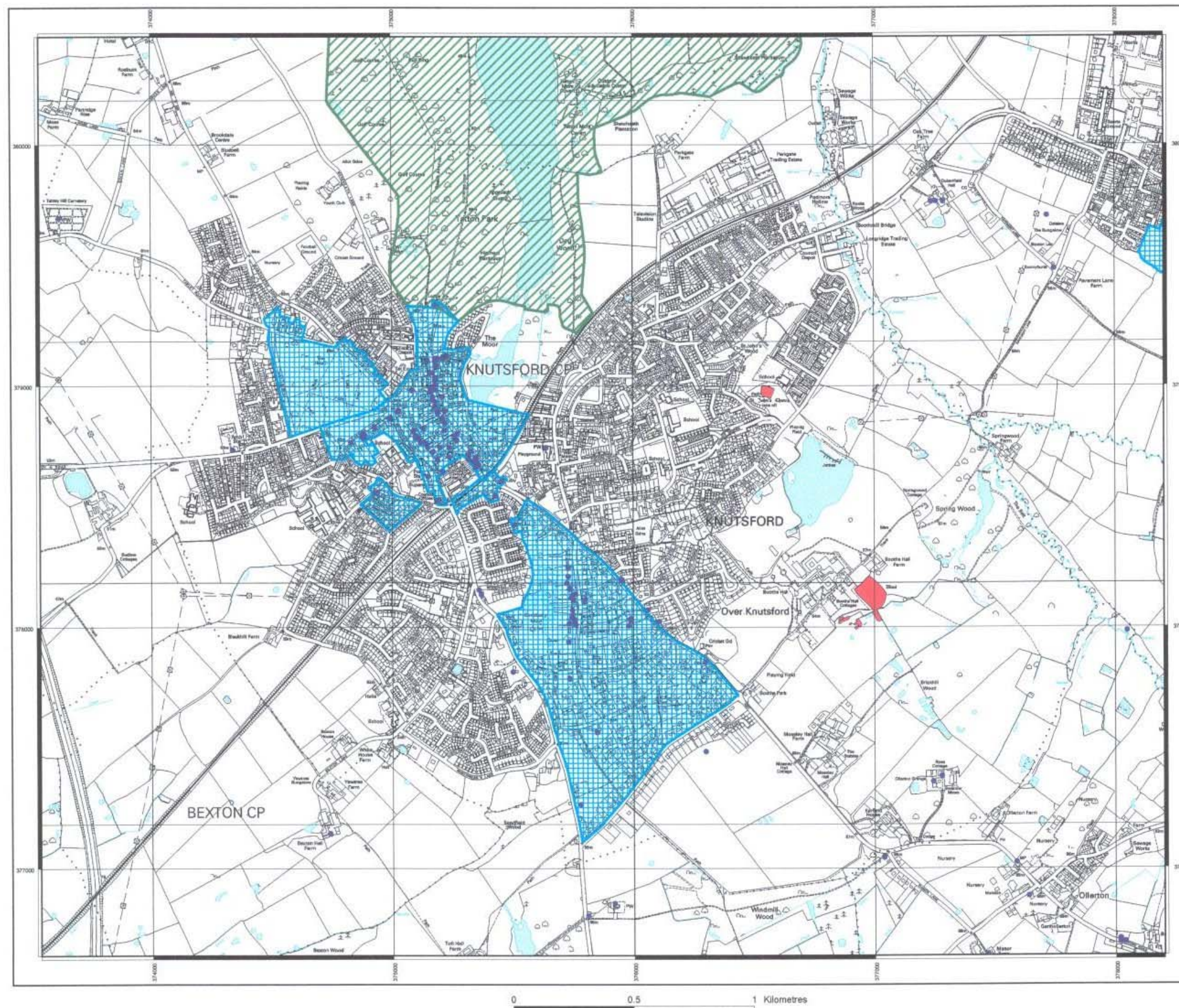






Figure 1: Knutsford  
Existing Designations

-  Scheduled Ancient Monument
-  Listed Building
-  Conservation Area
-  Registered Park and Garden

1:20000

This map is reproduced from Ordnance Survey material with the permission of Ordnance Survey on behalf of Her Majesty's Stationer © Crown Copyright. Unauthorised reproduction infringes Crown Copyright and may lead to prosecution or civil proceedings. Cheshire County Council. Environmental Planning. LA076503. 2002



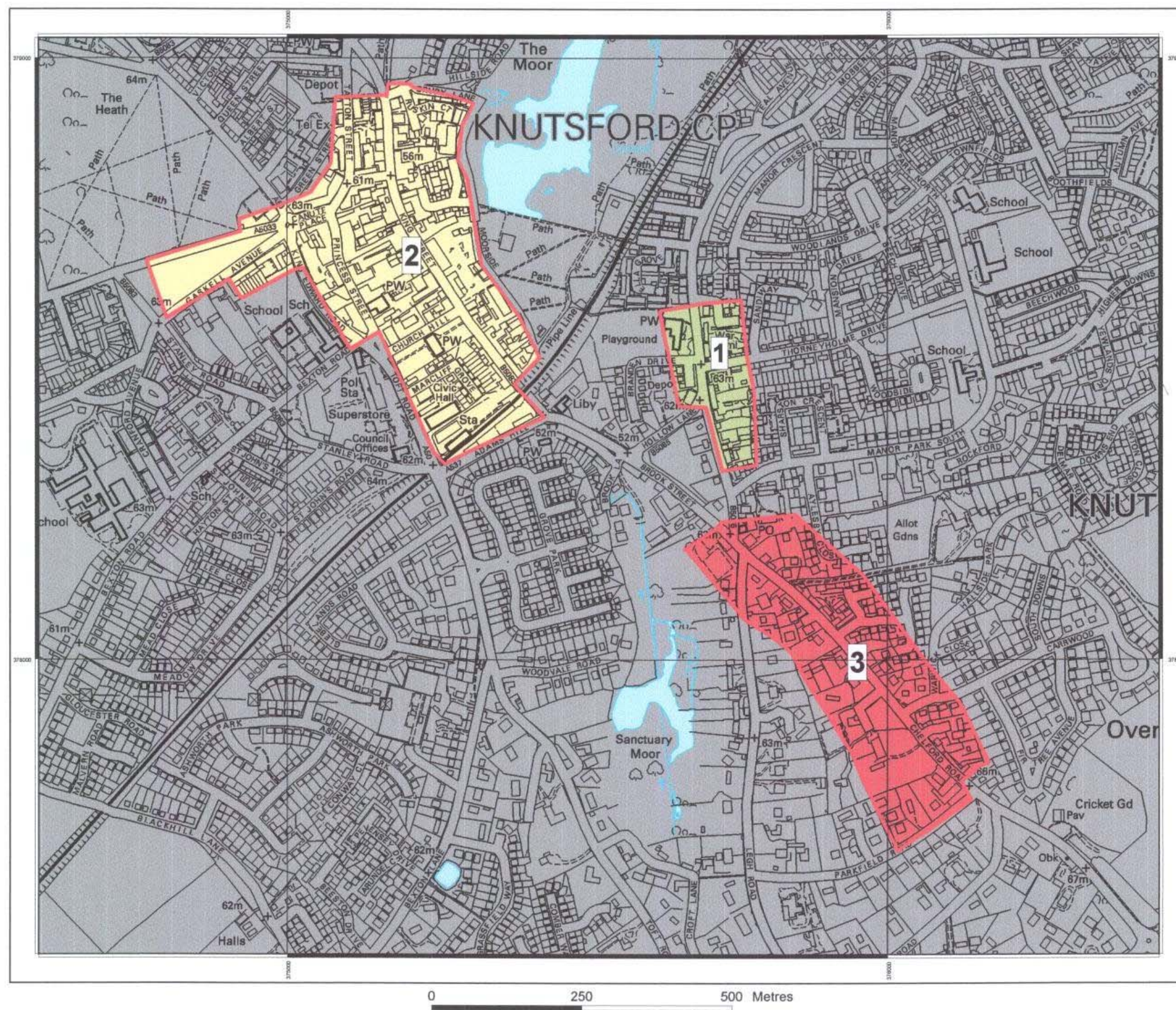


Figure 2: Knutsford Area of Archaeological Potential and Archaeological Character Zones

- Area of Archaeological Potential
- ACZ 1: Cross Town
- ACZ 2: Nether Knutsford Historic Core
- ACZ 3: Over Knutsford
- Area Outside the Historic Core

1:6000

This map is reproduced from Ordnance Survey material with the permission of Ordnance Survey on behalf of Her Majesty's Stationer © Crown Copyright. Unauthorised reproduction infringes Crown Copyright and may lead to prosecution or civil proceedings. Cheshire County Council. Environmental Planning. LA076503. 2002