

**The Cumbria**  
**Historic Landscape Characterisation**  
**THE LAKE DISTRICT NATIONAL PARK**

Caron Newman and Caroline Hardie

With

John Hodgson, Miles Johnson and Richard Newman

October 2007

© Lake District National Park Authority, Cumbria County Council & English Heritage

Front cover: Aerial view of Derwentwater © LDNPA  
& Lower Falls, Rydal by Thomas Allom

Copyright Lake District National Park Authority, Cumbria County Council and  
English Heritage

First published 2007

All rights reserved. No part of this publication may be reproduced, in any form or  
by any means, without permission from the Lake District National Park Authority  
or English Heritage

Typesetting and design by Egerton Lea Consultancy Ltd

Published by the Historic Environment Service, Cumbria County Council, Kendal

On behalf of

The Lake District National Park Authority, Murley Moss, Oxenholme Road,  
Kendal, Cumbria, LA9 7RL

ISBN 978-0-9557938-0-6

## ACKNOWLEDGEMENTS

This project was commissioned and funded by English Heritage and considerable support has been received from Graham Fairclough. The project has drawn upon the methods and ideas from a wide range of previous and in-progress Historic Landscape Characterisation (HLC) projects. Our grateful thanks go to Rob Edwards of Cheshire County Council and Steven Towse of North Yorkshire County Council for discussing HLC issues. The project development was undertaken by John Hodgson of the Lake District National Park Authority, and Helena Smith and Philip Holdsworth of Cumbria County Council. The project design was written by John Hodgson of the Lake District National Park Authority, who also wrote the project methodology. The methodology for the mapping and interpretation was refined by Miles Johnson. The initial stages of the project were undertaken by Miles Johnson, before moving to the Yorkshire Dales National Park Authority. Miles has continued to provide advice and has contributed to this report, and thanks must also go to Rob White of the Yorkshire Dales National Park Authority, for allowing Miles time to continue his involvement. The later stages of the project were carried out by Archaeo-Environment Ltd and Egerton Lea Consultancy Ltd. Mapping was completed by Caron Newman and Bette Hopkins following the departure of Miles. Research and case studies were undertaken by Caroline Hardie and Caron Newman. The project was managed by John Hodgson of the Lake District National Park Authority, and Richard Newman of Cumbria County Council, both of whom have lent much of their time to supporting the project and stimulating discussion. Mick Donn of the Lake District National Park Authority has provided much needed guidance on GIS and given data on land use and the World Heritage Site bid.

Others who have assisted with information and advice have been Eleanor Kingston of the Lake District National Park Authority, Helena Smith and Mike Smith, both formerly of Cumbria County Council. The authors are also grateful to Robert Maxwell, formerly of the National Trust, and Jamie Lund of the National Trust North West Region, for advice with the case study in Langdale, and, Luke Steer, formerly of the Lake District National Park Authority, and the staff at Rydal Hall, for help with the Rydal case study. As part of our research for the more detailed case studies, we have spent some time in the Local Studies Library and the County Records Office in Kendal. We are grateful to the staff who have been patient with our many requests.

### **Ordnance Survey maps**

The maps reproduced from Historic Ordnance Survey material within this document, are done so with the permission of the Landmark Information Group and are © Crown Copyright and Landmark Information Group. Modern mapping included in this report is provided by the LDNPA under licence from the Ordnance Survey in order to make information available about the LDNPA. Modern mapping is © Crown Copyright LDNPA 100021698 2006

### **Copyright of historic images**

All historic images have been taken from publications for which copyright has expired. Copyright for the scanned images rests with Archaeo-Environment Ltd and Egerton Lea Consultancy Ltd, but permission has been given to the Lake District National Park Authority, Cumbria County Council and English Heritage to reproduce them as paper and digital copy.

**Abbreviations used in the report**

ADS	Archaeology Data Service
AONB	Area of Outstanding Natural Beauty
CBA	Council for British Archaeology
DEFRA	Department of Environment, Food and Rural Affairs
DOE	Department of the Environment
DNH	Department of National Heritage
ESA	Environmentally Sensitive Area
GIS	Geographical Information System
GONW	Government Office of the North West
HER	Historic Environment Record
HLC	Historic Landscape Characterisation
HMSO	Her Majesty's Stationery Office
LDNPA	Lake District National Park Authority
LUAU	Lancaster University Archaeological Unit
MAFF	Ministry of Agriculture, Food and Fisheries (now DEFRA)
MAGIC	Multi-Agency Geographic Information for the Countryside
NMR	National Monuments Record
OAN	Oxford Archaeology North
ODPM	Office of the Deputy Prime Minister
OS	Ordnance Survey
RCHME	Royal Commission for Historic Monuments in England
SAC	Special Area of Conservation
SMP	Shoreline Management Plan
SSSI	Sites of Special Scientific Interest

## Contents

Chapter	Page
Acknowledgements .....	i
<b>PART 1: The Main Report</b>	
1 Introduction .....	3
2 Methodology .....	12
3 Historical Background .....	18
4 Ancient enclosures.....	30
5 Planned enclosures .....	56
6 Unenclosed land .....	77
7 Woodland and water .....	96
8 Settlement.....	118
9 Ornamental parks and recreation .....	130
10 Communications .....	139
11 Industry .....	150
12 Character areas .....	159
<b>PART 2: Case Studies and Discussion</b>	
13 Great Langdale .....	201
14 Crook and Underbarrow, enhancing historic landscape characterisation.....	219
15 Rydal Hall and Park .....	235
16 The Lakes ‘through a glass darkly’ .....	258
17 Discussion .....	299
Bibliography .....	311
Appendix 1. Database structure.....	320
Appendix 2. Morphology .....	323

## Figures

Figure	Page
1 The Lake District National Park and the county of Cumbria .....	ix
2 Simplified geological map of the Lake District .....	11
3 Polygons mapped by morphology.....	14
4 Polygons mapped by date .....	15
5 Polygons mapped by boundary change.....	15
6 Polygons mapped by interpretation .....	16
7 Distribution of ancient enclosure landscape types.....	31
8 Proportion of anciently enclosed landscape types.....	32
9 The distribution of discrete ancient farms .....	33
10 The distribution of former common fields.....	35
11 The distribution of intakes .....	38
12 The distribution of monastic holdings, deer parks and vaccaries .....	41
13 Comparison of types of ancient enclosure field shapes.....	45
14 Field shapes of ancient enclosures according to enclosure type.....	46
15 Average boundary change in all types of ancient enclosure.....	47
16 Boundary change in ancient enclosures according to enclosure type .....	48
17 Planned enclosure by type.....	58
18 The distribution of planned enclosures .....	60
19 Areas of lowland landscape types covered by planned enclosure .....	62
20 The proportion of field shapes for all types of planned enclosure.....	64
21 The proportion of field shapes by planned enclosure type .....	65
22 Comparison of boundary change, relating to all planned enclosure .....	66
23 Comparison of boundary change, different types of planned enclosure.....	67
24 Unenclosed land .....	77
25 The distribution of ancient woodland and plantation woodland .....	97
26 The main rivers, lakes and reservoirs .....	112
27 Distribution of nucleated and dispersed settlements .....	118
28 The development of the settlement of Staveley.....	121
29 The proportion of dispersed settlement by date.....	122
30 Conservation areas within the Lake District National Park .....	126
31 Ornamental parkland, public open spaces, caravan and camping sites.....	131
32 The distribution of public roads and railways .....	139
33 The distribution of industrial sites.....	150
34 Character areas in the Lake District National Park.....	159
35 Key to the landscape types.....	160
36 Crosthwaite and Underbarrow Low Fells character area.....	162
37 Allithwaite and Witherslack Low Fells character area.....	164
38 Furness Fells character area .....	166
39 Grizedale Forest character area .....	168
40 Windermere, and the Rothay and Brathay Valleys character area.....	170
41 Dunnerdale and Broughton Low Fells character area .....	172
42 West Cumbria Coastal Plain character area.....	174
43 Gosforth and Muncaster Lowlands character area .....	176
44 Western Fell Edge character area .....	178
45 Ennerdale character area .....	180
46 North Western Lowlands character area .....	182
47 Wythop and Thornthwaite Forest character area.....	184
48 Caldbeck, Uldale and Ireby Lowlands character area .....	185
49 Skiddaw Range character area.....	187
50 Keswick and Derwentwater character area .....	189
51 Thirlmere character area.....	191

52	North Eastern Lowlands character area .....	193
53	Eastern Fells character area.....	195
54	Central Fells character area.....	197
55	The Great Langdale survey area .....	201
56	The medieval period, Great Langdale.....	205
57	Single ancient farms, Great Langdale.....	205
58	Former commonfield land, Great Langdale .....	206
59	The Tudor landscape, Great Langdale .....	208
60	Intakes from the 17-18 <sup>th</sup> centuries, Great Langdale.....	208
61	Intakes enclosed in the 18 <sup>th</sup> -19 <sup>th</sup> centuries, Great Langdale.....	209
62	Intaking as defined by HLC.....	209
63	Enclosure associated with the Age of Improvement, Great Langdale .....	210
64	Planned enclosure, Great Langdale .....	211
65	Woodland mapped by HLC, Great Langdale.....	214
66	The Ordnance Survey 1 <sup>st</sup> edition map, Great Langdale.....	214
67	The Ordnance survey 2nd edition map, Great Langdale .....	215
68	HLC boundary change, Great Langdale .....	216
69	HLC landscape types, Great Langdale .....	217
70	Crook and Underbarrow study area.....	219
71	Low Lindeth, on the OS 1 <sup>st</sup> edition 6" map of 1863.....	220
72	Areas of parliamentary enclosure in Crook and Underbarrow .....	221
73	Pre-1863 and post-1863 settlements in part of Crook Parish .....	222
74	Knott Farm, Underbarrow and Bradleyfield.....	225
75	Enclosure field pattern morphology in Crook and Underbarrow .....	230
76	Current surface type in Crook and Underbarrow .....	231
77	Surface type shown on 1 <sup>st</sup> edition OS map in Crook and Underbarrow.....	232
78	Boundary change since 1 <sup>st</sup> edition OS map in Crook and Underbarrow.....	233
79	First layer of interpretation in Crook and Underbarrow .....	234
80	The Rydal study area.....	236
81	The proportions of historic landscape types in Rydal. ....	250
82	Unenclosed land and intakes in Rydal.....	253
83	Rydal as shown on the OS 1 <sup>st</sup> edition map .....	254
84	The distribution of woodland in present-day Rydal.....	255
85	The area of registered park and garden for Rydal Hall.....	256
86	Areas of ancient enclosures at Rydal .....	257
87	Ancient closes, discrete farms, open fields and meadows .....	264
88	The sites of West's eight Picturesque viewing stations .....	266
89	Boundary change near Cockshutt Hill.....	267
90	Planned enclosure around Cockshutt Hill and Keswick.....	268
91	Intakes in the Derwentwater area .....	276
92	Woodland Cover around Derwentwater.....	278
93	Boundary change south of Derwentwater.....	282
94	Fawe park on the OS 1 <sup>st</sup> edition map.....	288
95	Parkland identified by HLC .....	289
96	Boundary change around the north side of Derwentwater.....	291
97	Ancient farms, closes and meadows, northern half of Derwentwater .....	292

## Plates

Plate		Page
1	The central Lake District from High Street .....	4
2	An aerial view of Coniston .....	10
3	Neolithic stone axes.....	18
4	Castlerigg stone circle.....	20
5	Aerial view of Hardknott Roman fort .....	21
6	The Gosforth Cross.....	22
7	Borrowdale, with ancient enclosures on the valley bottom .....	25
8	Calder Abbey .....	26
9	Rydal Park .....	28
10	A discrete ancient farm at Hallow Bank, Kentmere.....	34
11	Great Langdale Valley .....	36
12	Intakes on at Green Quarter in the Kentmere Valley .....	39
13	Later intakes on the western side of the Kentmere valley .....	40
14	The upper end of Wetsleddale.....	42
15	Calder Abbey cloister.....	43
16	A poorly maintained hedgerow .....	50
17	A well maintained hedgerow .....	50
18	The deer park wall at Wharton.....	51
19	Planned enclosure wall .....	51
20	Shard fencing.....	52
21	Hog holes.....	52
22	Field wall buttresses .....	52
23	Lynchets, holloway and veteran oak tree.....	53
24	Relict intake boundary .....	54
25	Improved pasture land within parliamentary enclosures near Crook .....	59
26	Parliamentary enclosure field systems in the Lyth Valley, near Levens .....	61
27	Distant view of Bruntt Knott, Over Staveley .....	63
28	The parliamentary enclosure of the Lyth valley .....	68
29	Lime kiln, typical of the many built following planned enclosure .....	69
30	Parliamentary enclosure road .....	69
31	Stone enclosure wall, built to a minimum specification.....	70
32	Poorly maintained field boundaries.....	71
33	Ruined sheep fold and planned enclosure wall on Green Quarter Fell .....	72
34	Redundant hog hole in a planned enclosure wall on Cocklaw Fell.....	73
35	Stone wall with iron railings in Langdale .....	74
36	A well maintained planned enclosure wall on Cocklaw Fell.....	75
37	The coastal section of the Lake District National Park.....	80
38	Young bracken growth on Foul Scrow moorland above Coniston .....	85
39	Pike of Stickle, Langdale.....	86
40	Clearance cairn on Burnmoor, above Eskdale .....	88
41	The stone foundations of a shieling, in the Troutbeck valley .....	90
42	A sheep fold on unenclosed moorland.....	92
43	Intakes in the early stages of moorland reversion .....	94
44	Pollarded tree .....	99
45	Woodland pasture in Rydal Park .....	100
46	Duddon Furnace .....	102
47	Coppiced woodland .....	103
48	Large-scale coniferous plantation at Matterdale .....	106
49	Large-scale coniferous plantations around Thirlmere.....	110
50	Buttermere and Crummock Water .....	113
51	Leathes Water and Wythburn Water, dammed to create Thirlmere .....	114



52	Derwentwater from the north shore .....	116
53	The village of Coniston .....	120
54	Settlement in the Great Langdale valley, 1786 .....	123
55	Farmhouse in the Kentmere valley .....	124
56	Kentmere Hall, .....	127
57	Belle Isle .....	132
58	The Parkland at Rydal Mount. ....	133
59	A view across the park at Dalemmain from the garden wall walk .....	134
60	Parkland entrance on the edge of Derwentwater .....	135
61	Veteran parkland trees .....	136
62	Parkland trees .....	136
63	A designed landscape near Derwentwater .....	137
64	The Roman road between the forts at Ambleside and Ravenglass .....	140
65	The main roads north from Ambleside .....	141
66	Ashness Bridge, a packhorse bridge overlooking Derwentwater .....	142
67	A66 bypass around Keswick .....	144
68	Greta Bridge which carries the A66 bypass around Keswick .....	145
69	The old railway station at Coniston .....	146
70	Road signage and street furniture .....	148
71	Stott Park Bobbin Mill .....	151
72	Lead mine and ore works at Greenhead Gill, Grasmere .....	153
73	A mine adit at Coniston copper mines .....	154
74	The Honister slate quarries .....	156
75	Industrial worker' housing in Staveley .....	157
76	The ring garth, Great Langdale .....	203
77	Etching of Stool End Farm by W Green, 1810 .....	212
78	Enclosures and intakes, Great Langdale .....	213
79	Crook End Farm .....	223
80	Knott Farm Underbarrow on the Corn Rent map of 1836 .....	224
81	Detail from the 1836 Underbarrow Corn Rent Map .....	226
82	A late enclosure wall in Crook .....	226
83	A possibly ancient enclosure wall in Underbarrow and Bradleyfield parish ..	226
84	Cumulative piecemeal changes within the inbye .....	227
85	Ridge and furrow at Help Pot farm Underbarrow .....	228
86	A rare 'actively managed' Ash pollard, just north of Crook .....	229
87	Rydal Park looking north towards Rydal Water and Grasmere .....	237
88	The boundary wall between the townships of Rydal and Ambleside .....	239
89	Old Hall Hill, Rydal .....	240
90	An old coppiced alder on the hillside above Rydal Hall .....	242
91	Rydal Park from the north .....	243
92	Map of Rydal Hall estate, dated 1770 .....	244
93	A veteran Ash tree in Rydal Park .....	245
94	The ha-ha style ditch, Old Orchard field, Rydal Old Hall .....	246
95	The game larder in the grounds of Rydal Hall .....	247
96	Sir Daniel Fleming's grotto, Rydal Hall .....	248
97	Map of Derwentwater, 1784 .....	262
98	The views from Cockshutt Hill .....	268
99	The sale of oaks at Crow Park .....	269
100	A view of Derwentwater, towards Borrodale' by William Bellers, 1752 .....	270
101	'A view of Darwentwater &c. from Crow-Park' by Thomas Smith, 1761 .....	270
102	View south from Station II .....	271
103	View across to Lord's Island from Station III .....	272
104	Pocklington's Island (Derwent Isle) .....	272
105	Derwent Isle today .....	273
106	Redundant enclosure on the west bank of Derwentwater .....	275

107	View south to Castle Crag from Station III .....	279
108	Partially obscured views from Station IV.....	280
109	Unobstructed view north from Station IV .....	281
110	Borrowdale and Rosthwaite from Station IV .....	283
111	<i>"Here rock riots over rock..."</i> .....	285
112	<i>"...the last beams of the sun rest on the purple summit of Skiddaw,..."</i> .....	286
113	Skiddaw by William Westall 1820 .....	287
114	Surely the squirrels are departing from Station VI? .....	290
115	Ornamental parkland around Derwentwater at 'The Park' .....	290
116	Enclosures above Applethwaite, seen from Station VI .....	291
117	View from Latrigg 1906 .....	293
118	View south from Latrigg in 2005 .....	293
119	A plan of Keswick in 1787 .....	294
120	Ruler straight enclosures north east of Keswick .....	295
121	A66 and the redundant railway line.....	295
122	Dry-stone walls and planned enclosures with improved pastures .....	302
123	Lowther Park in the early nineteenth century.....	305
124	Stone cairn on Bleaberry Haws .....	307

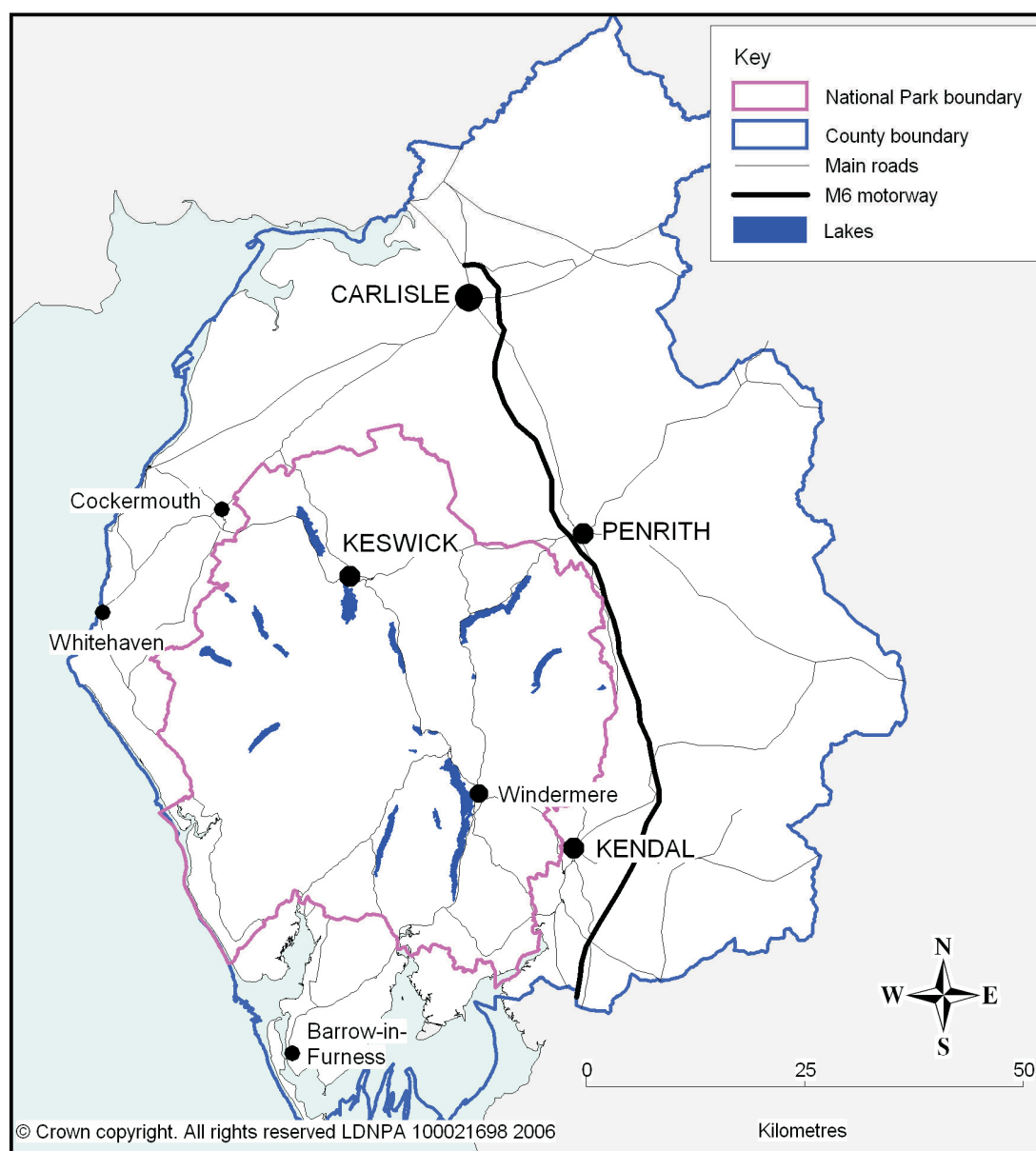


Figure 1: The Lake District National Park and the county of Cumbria

