

2861
983ha
2 43

3658
765ha
1 89

3454
789ha
1 95

Stockhill
Garage

Transport
Depot

Seamer

6652
0 755ha
125 42

Se Martin's Church
(C of E)

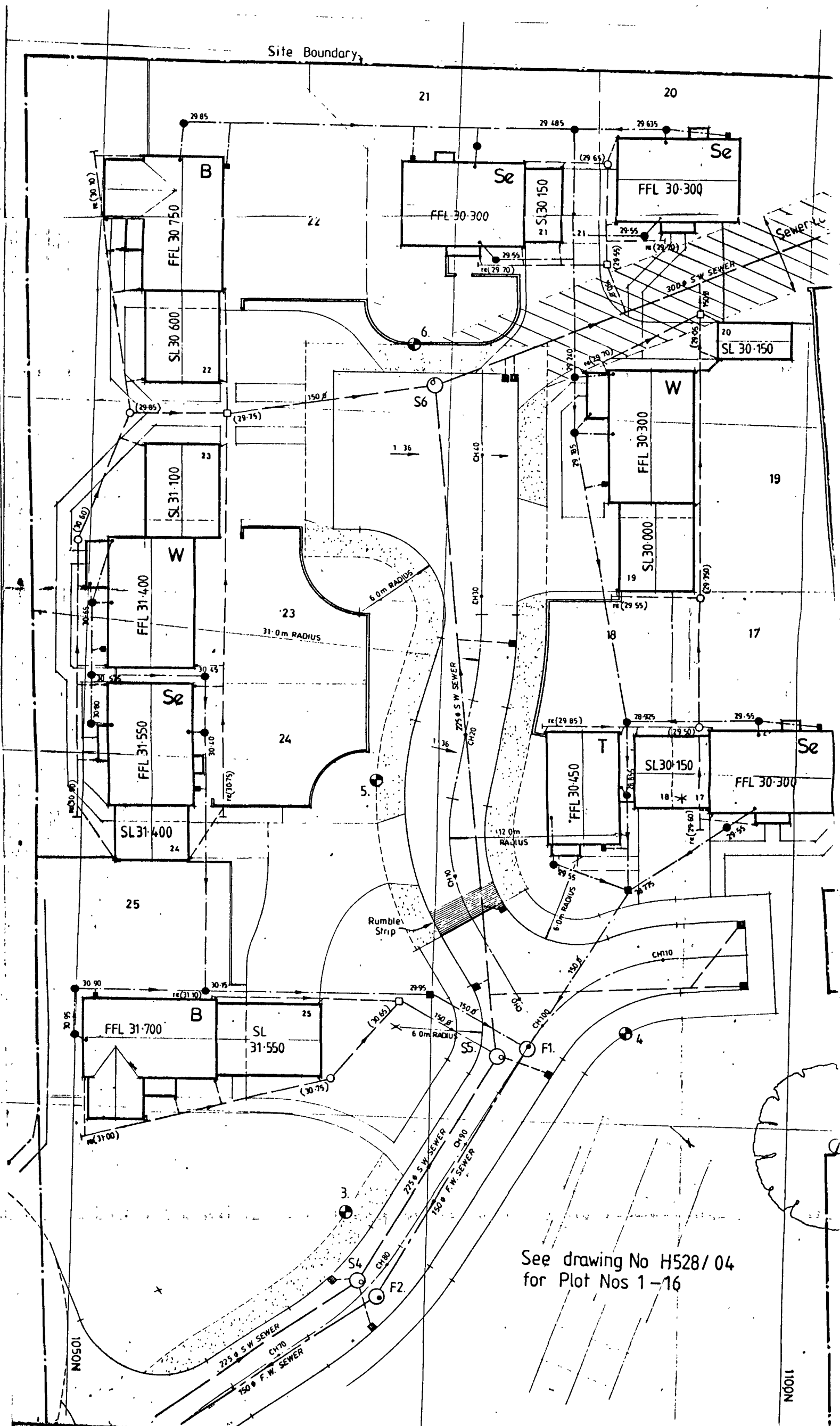
WILCON HOMES

scale 1:2500

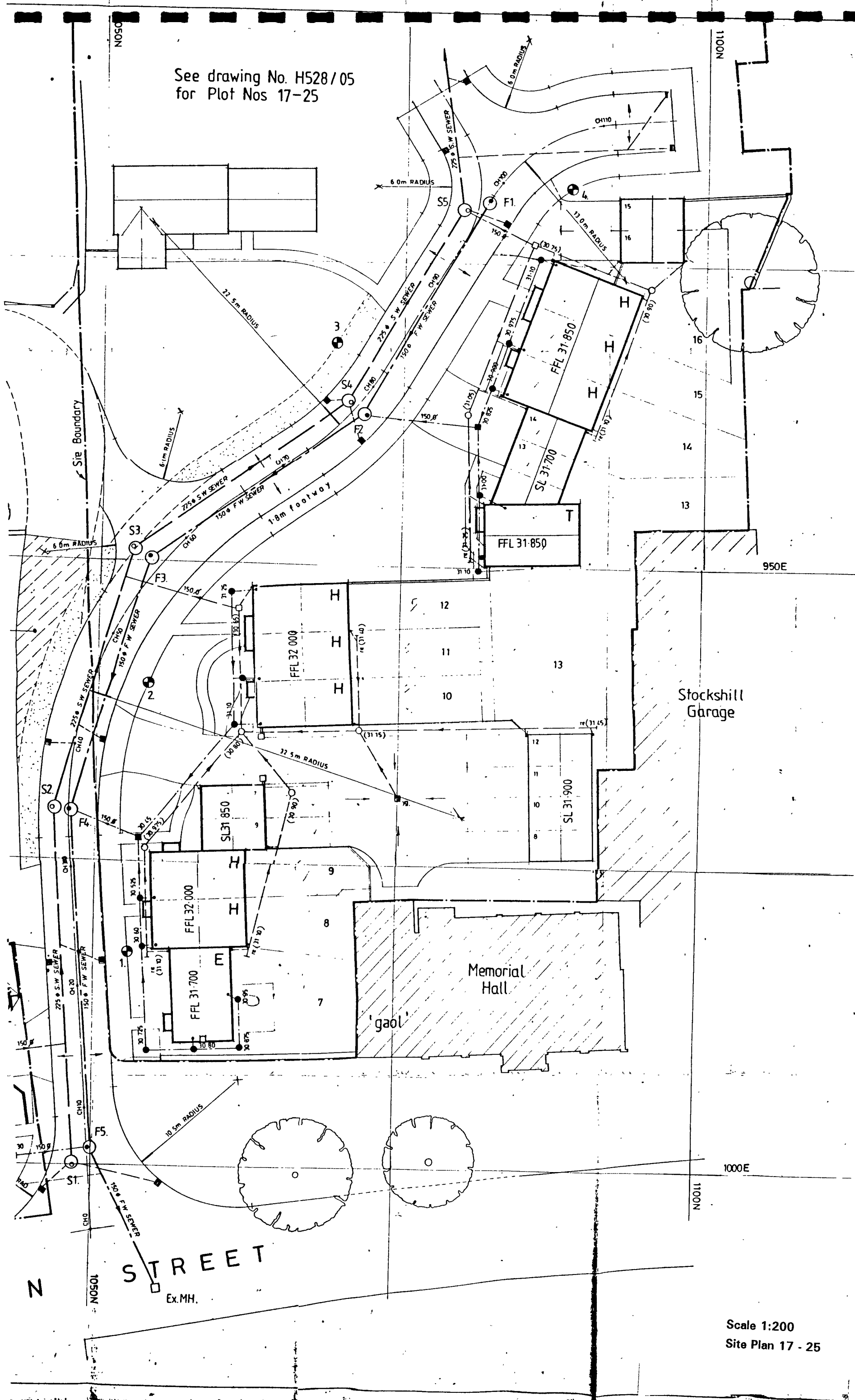
dwg no A528.1A

Proposed Development at Seamer LOCATION PLAN

REV A. Boundary Revises. Dec 93



See drawing No. H528/05
for Plot Nos 17-25



LIST OF PHOTOGRAPHS

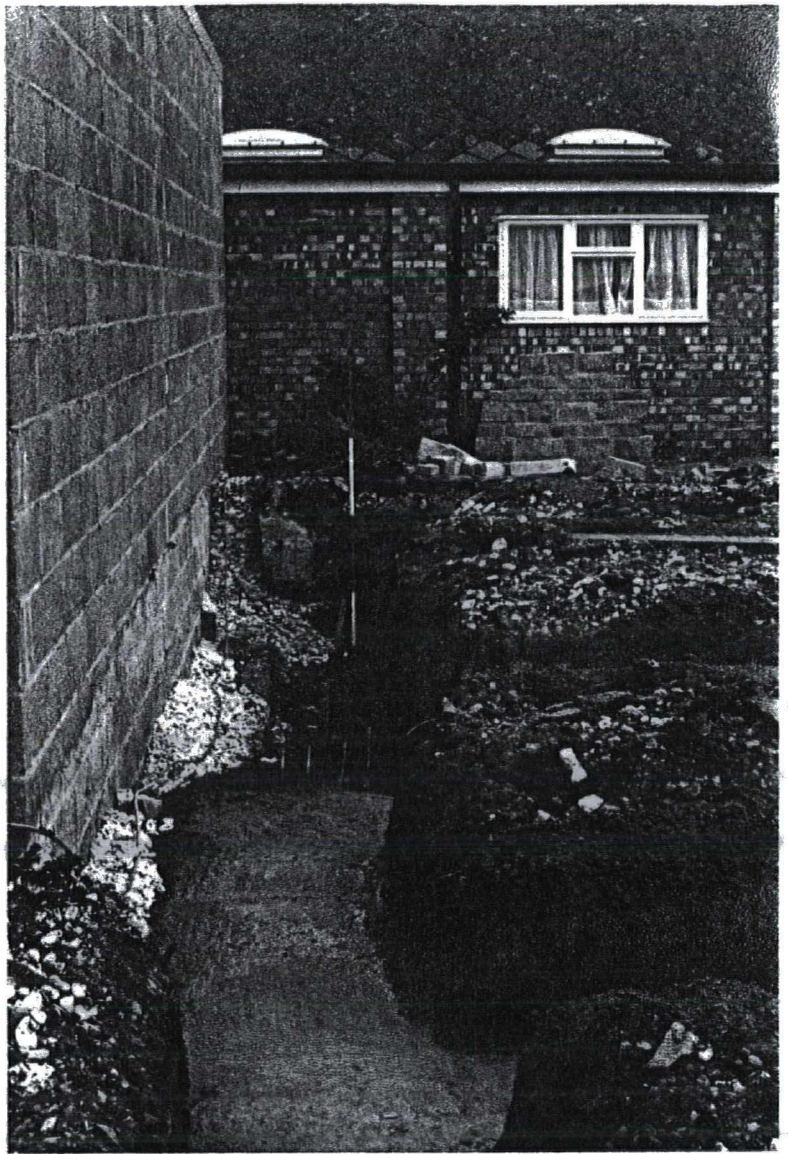
1. Seamer looking north-west towards the Manor Garth
2. Seamer looking north-west towards the Manor Garth
3. Plot 9 (garage)
4. Plot 13 looking east
5. Plot 13 looking south
6. Plot 14 looking west
7. Plot 14 looking west
8. Plot 19 looking east
9. Plot 19 looking east
10. Plot 20 looking west
11. Plot 21 looking west
12. Plot 23 looking north-west
13. Plot 23 looking south
14. Plot 24 looking south
15. Plot 24 looking south-east
16. Plot 24 looking south
17. Plot 24 looking east
18. Plot 24 looking east
19. Plot 25 looking east
20. Plot 25 looking east
21. Plot 25 looking east
22. Plot 25 looking east



1. Seamer looking north-west towards the Manor Garth



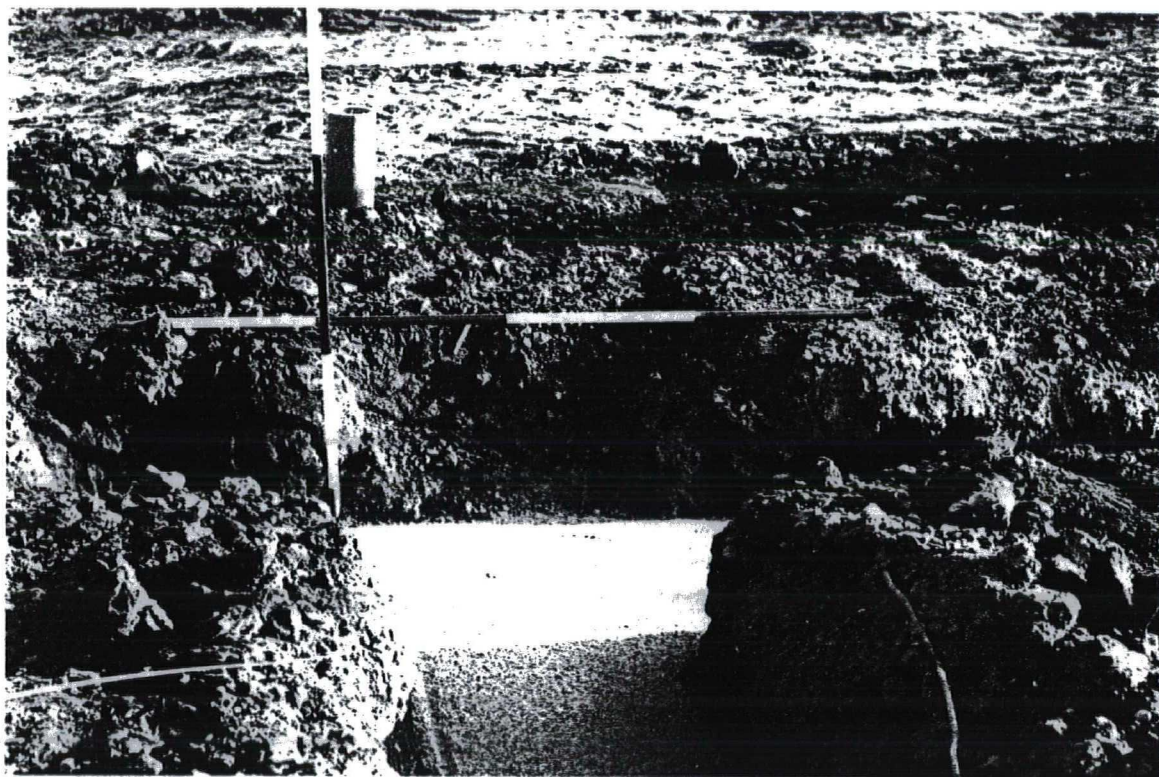
2. Seamer looking north-west towards the Manor Garth



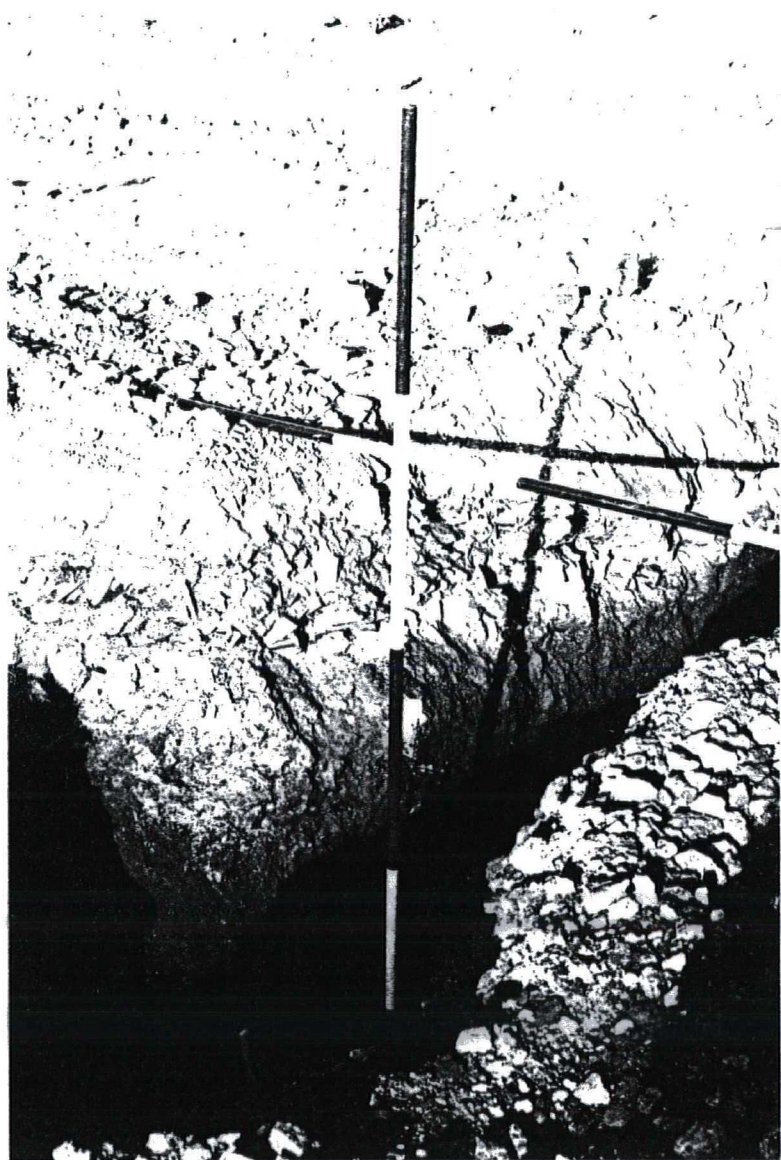
3. Plot 9 (garage)



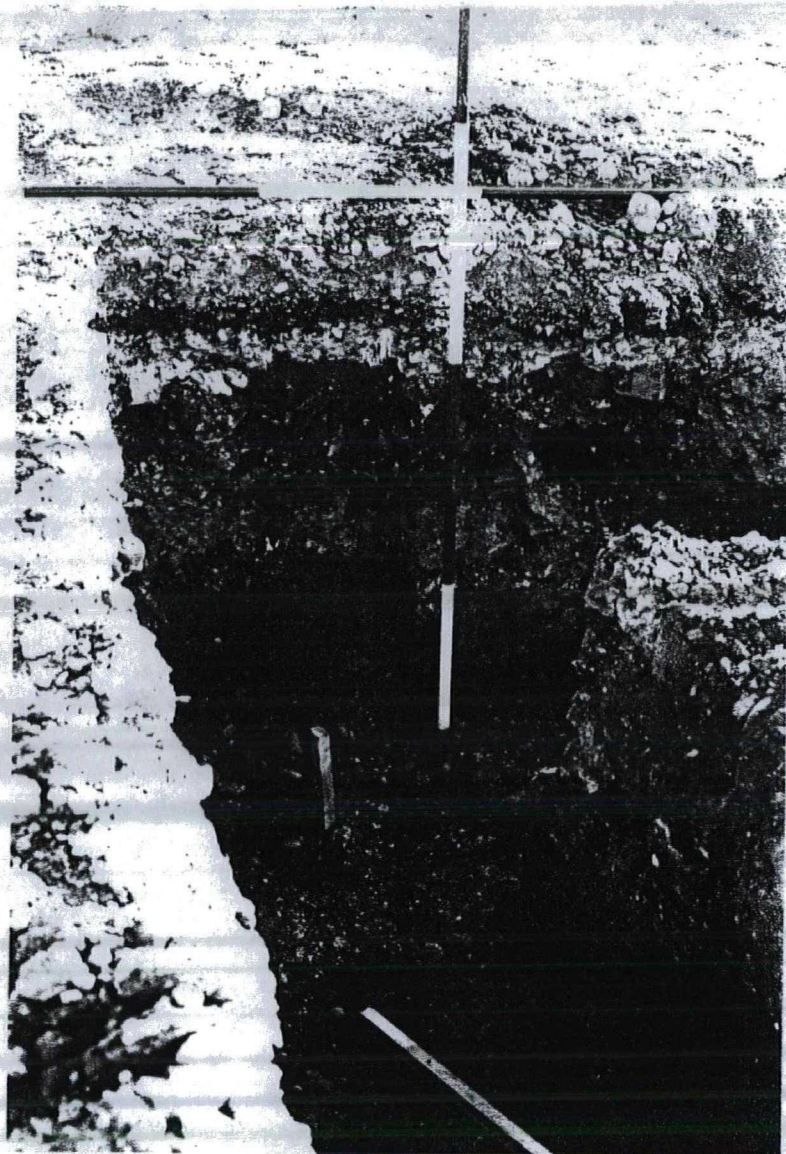
4. Plot 13 looking east



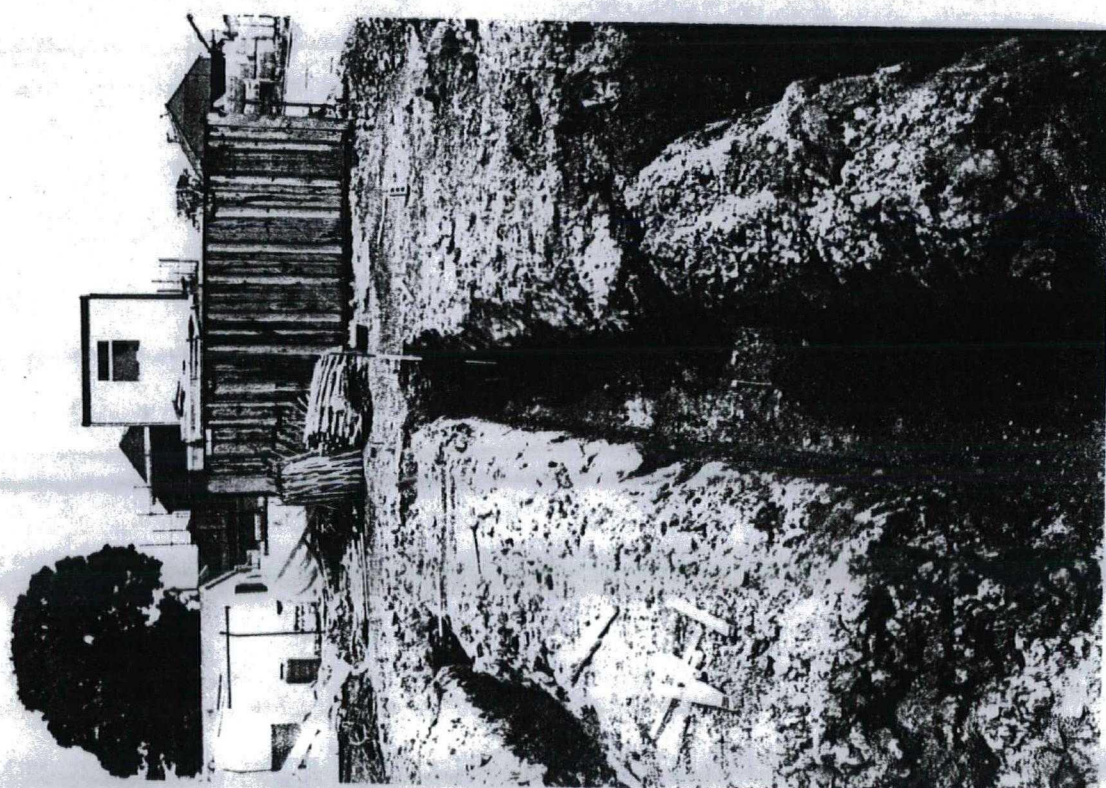
5. Plot 13 looking south



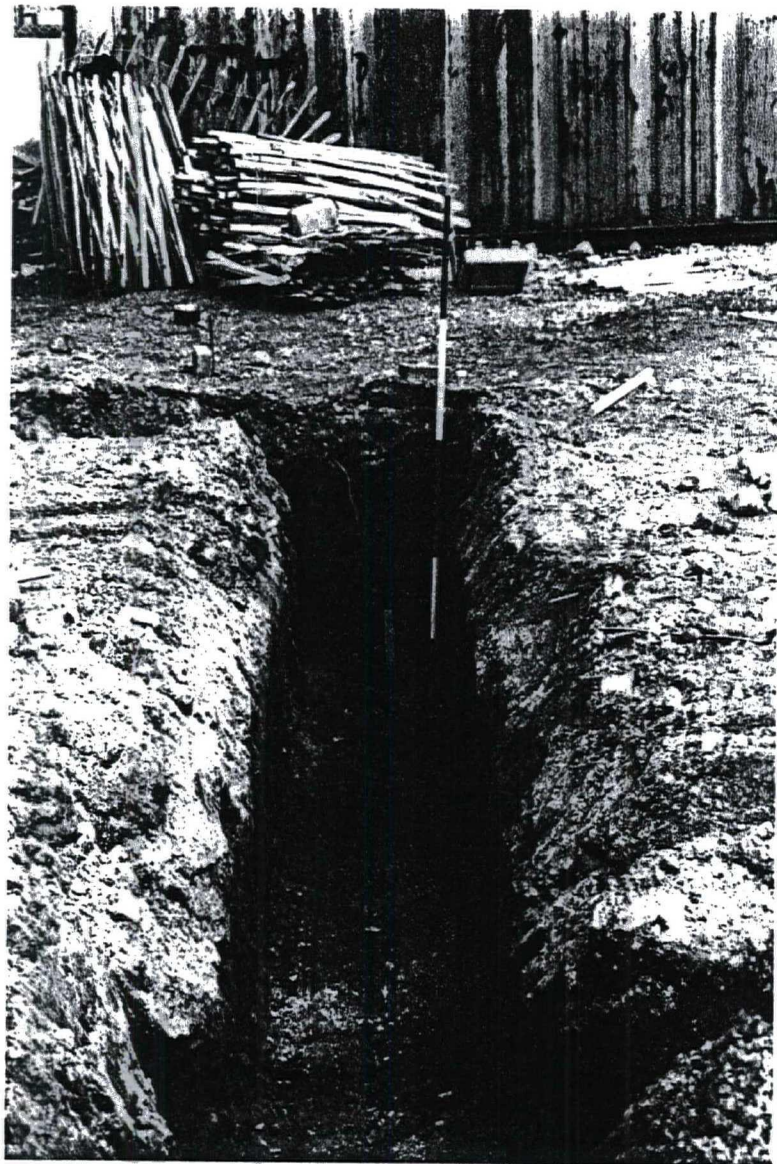
6. Plot 14 looking west



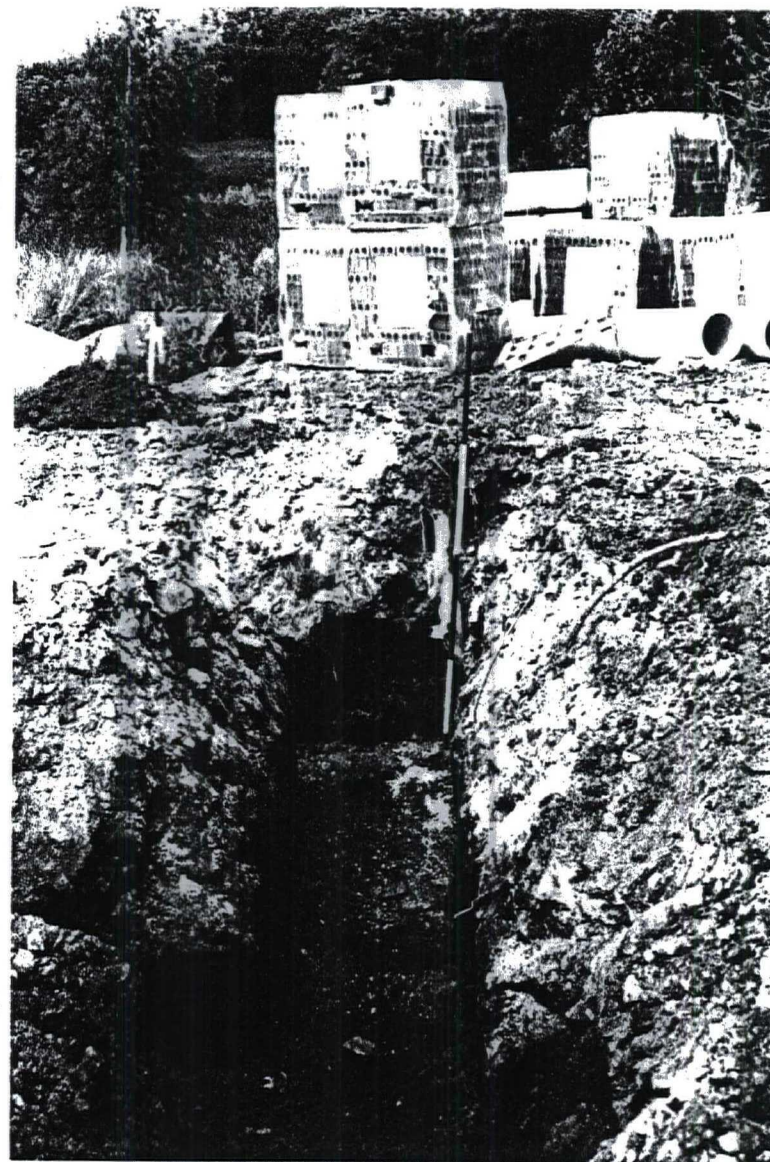
7. Plot 14 looking west



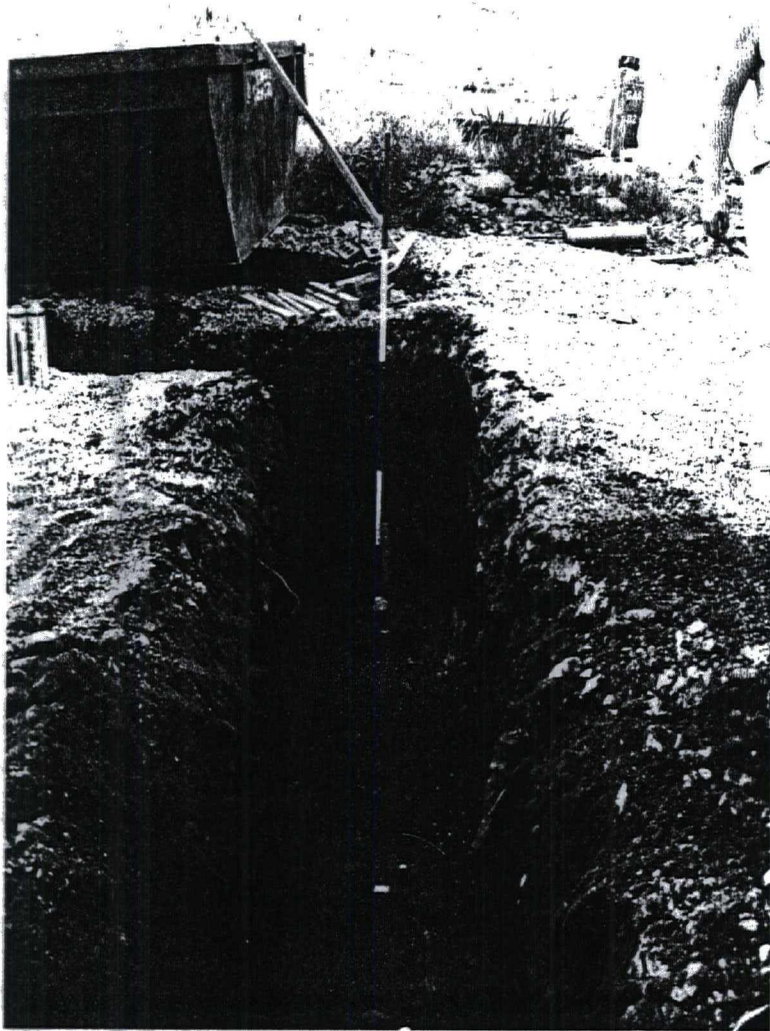
8. Plot 19 looking east



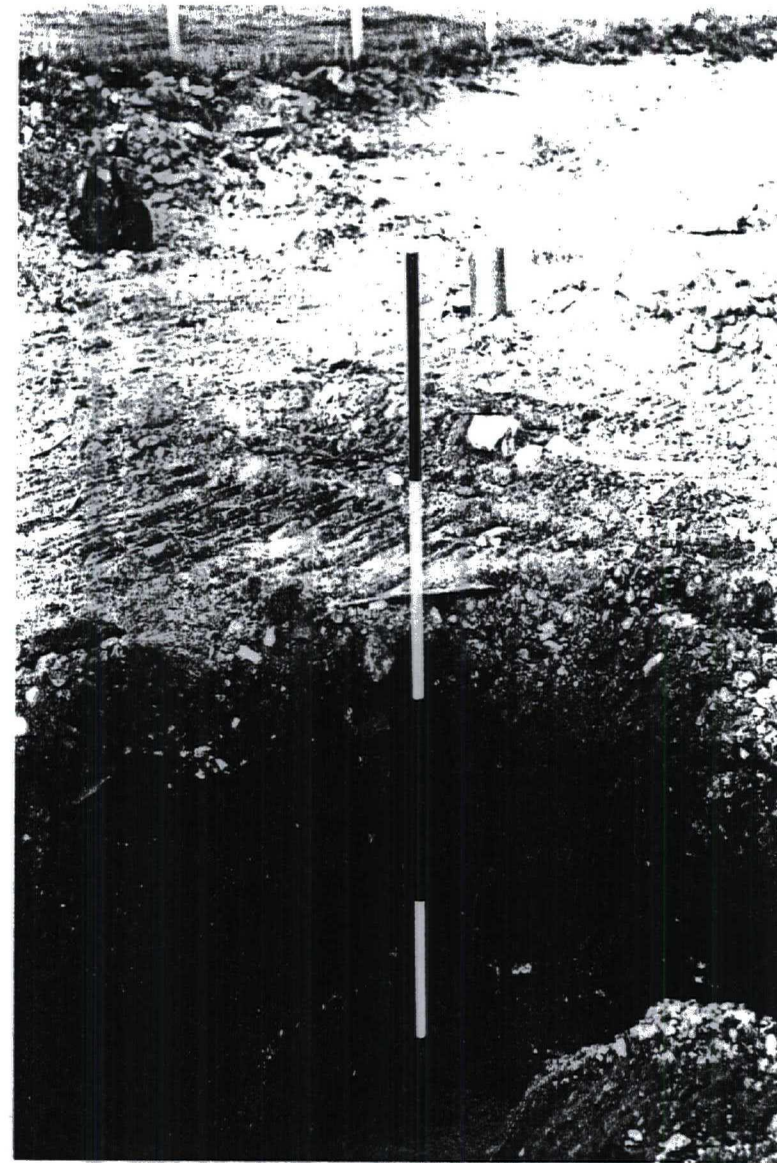
9. Plot 19 looking east



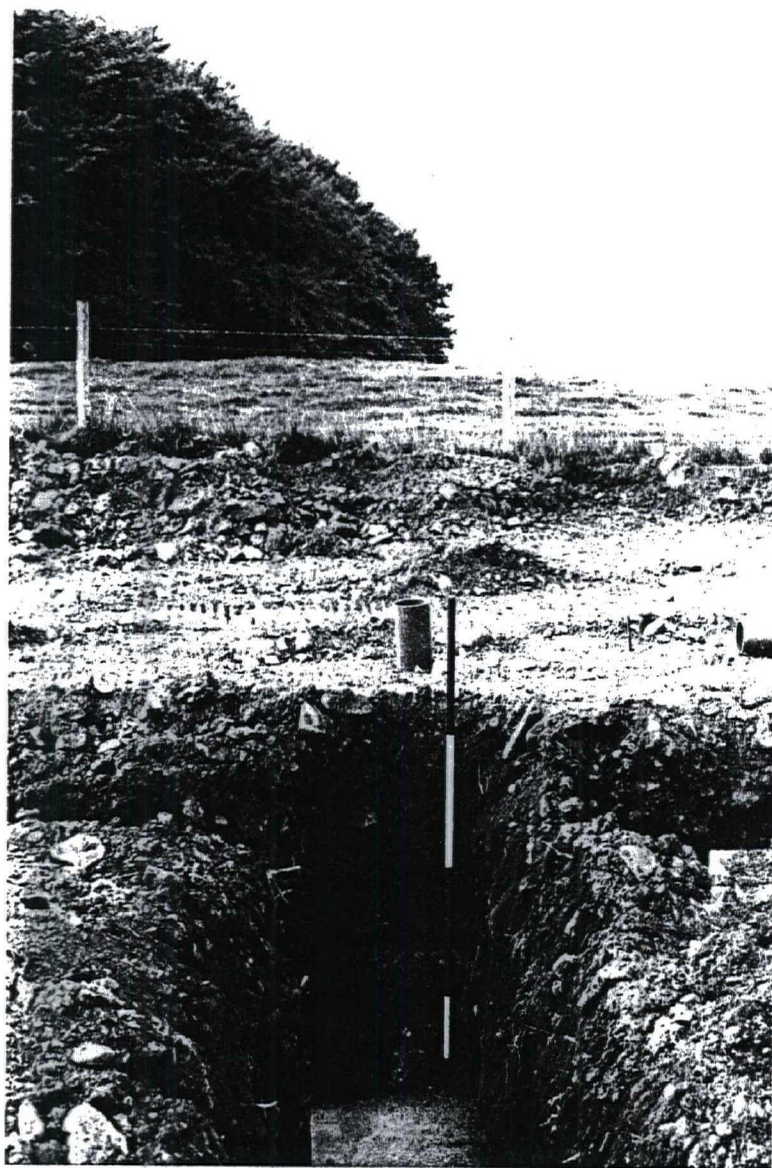
10. Plot 20 looking west



11. Plot 21 looking west



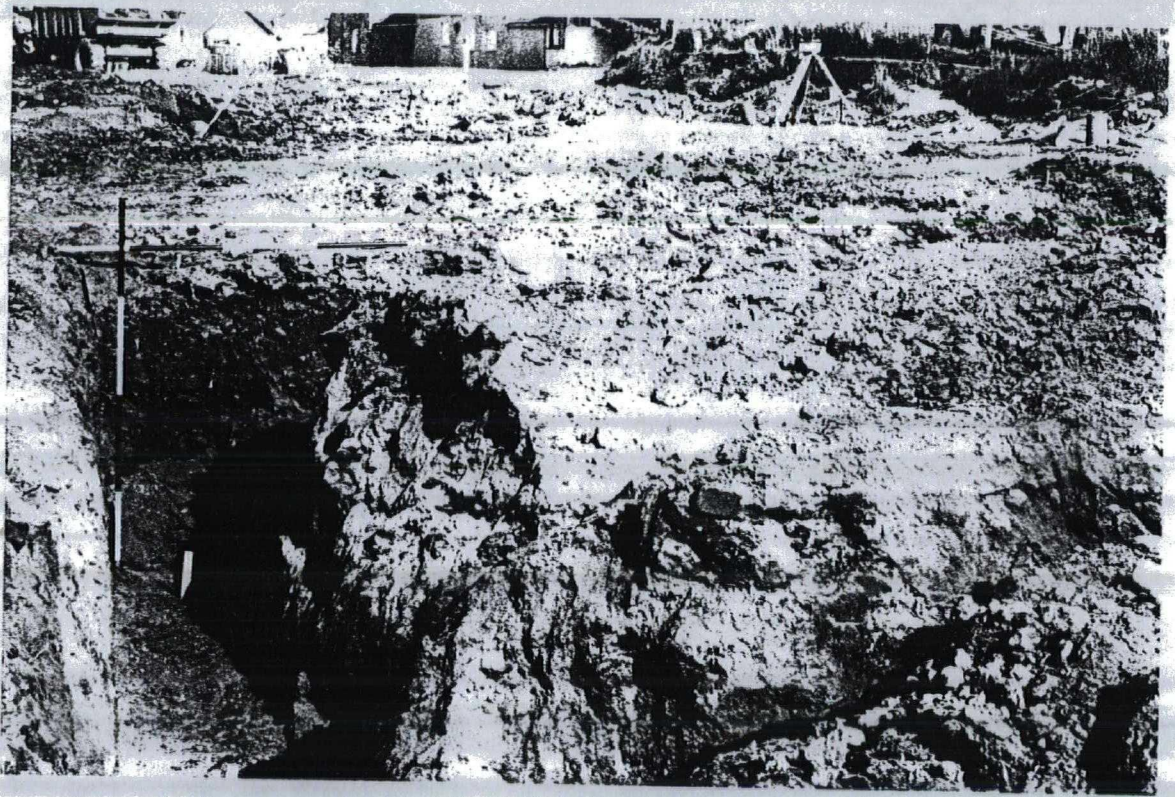
12. Plot 23 looking north-west



13. Plot 23 looking south



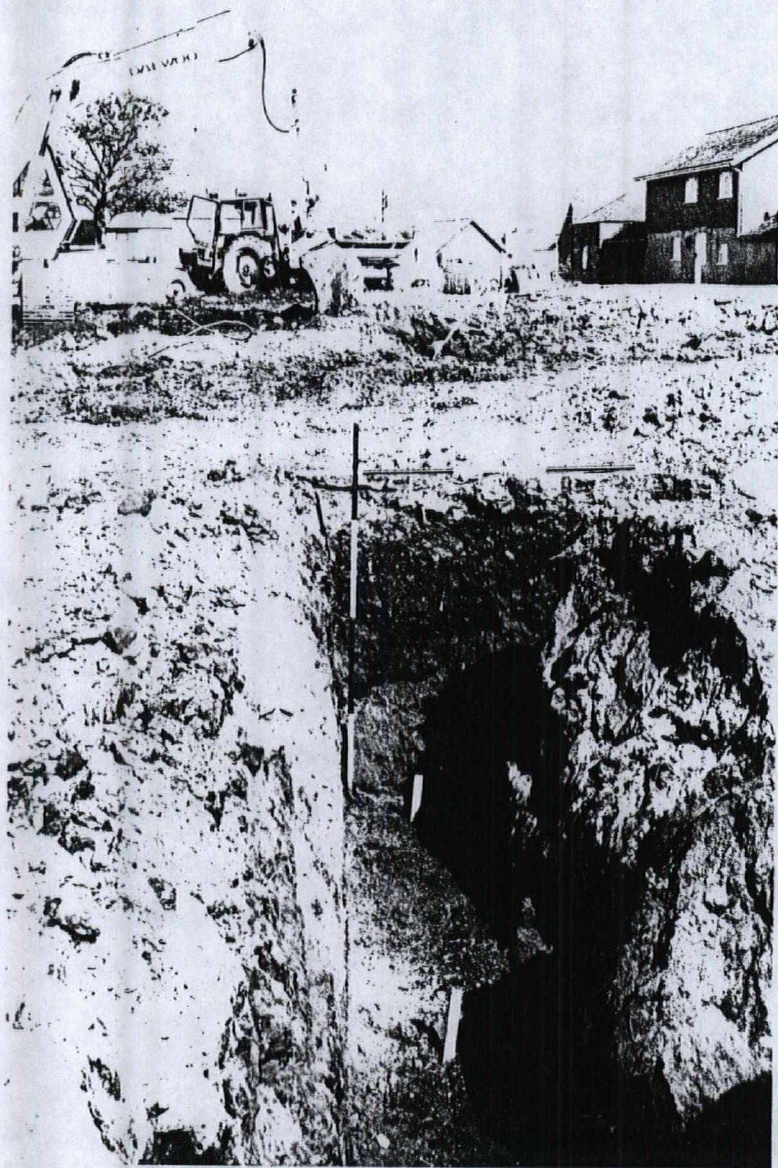
14. Plot 24 looking south



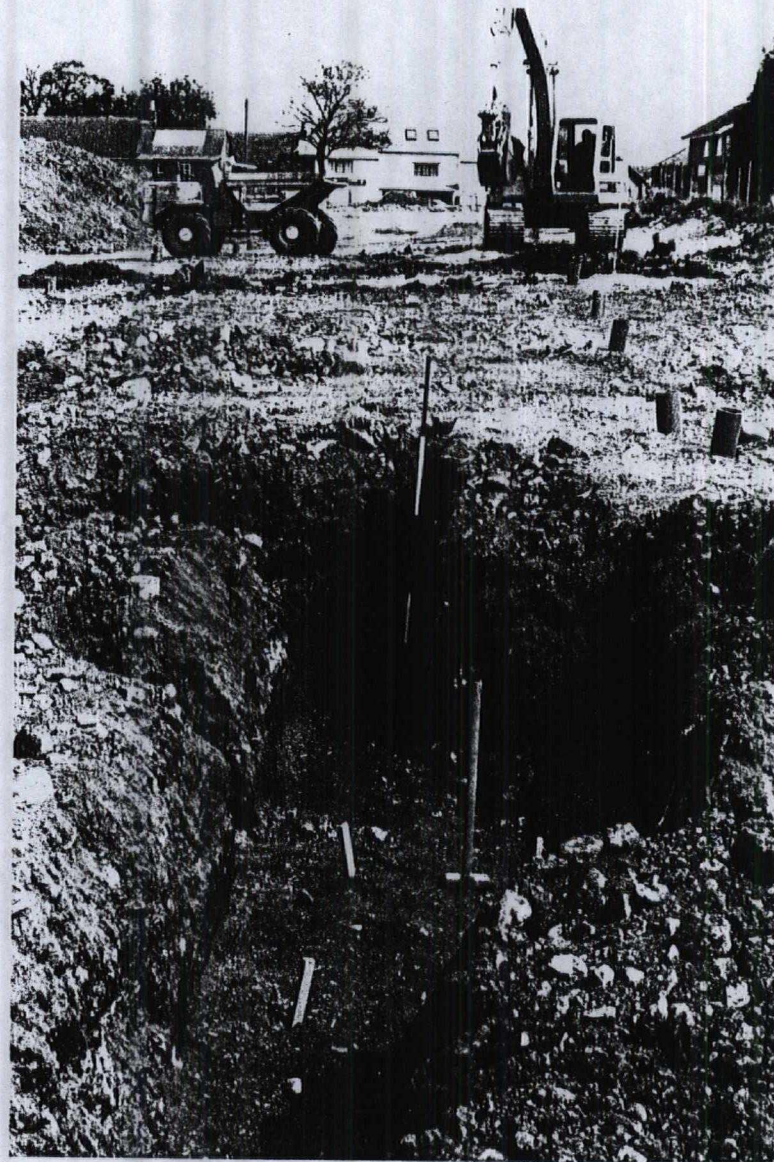
15. Plot 24 looking south-east



16. Plot 24 looking south



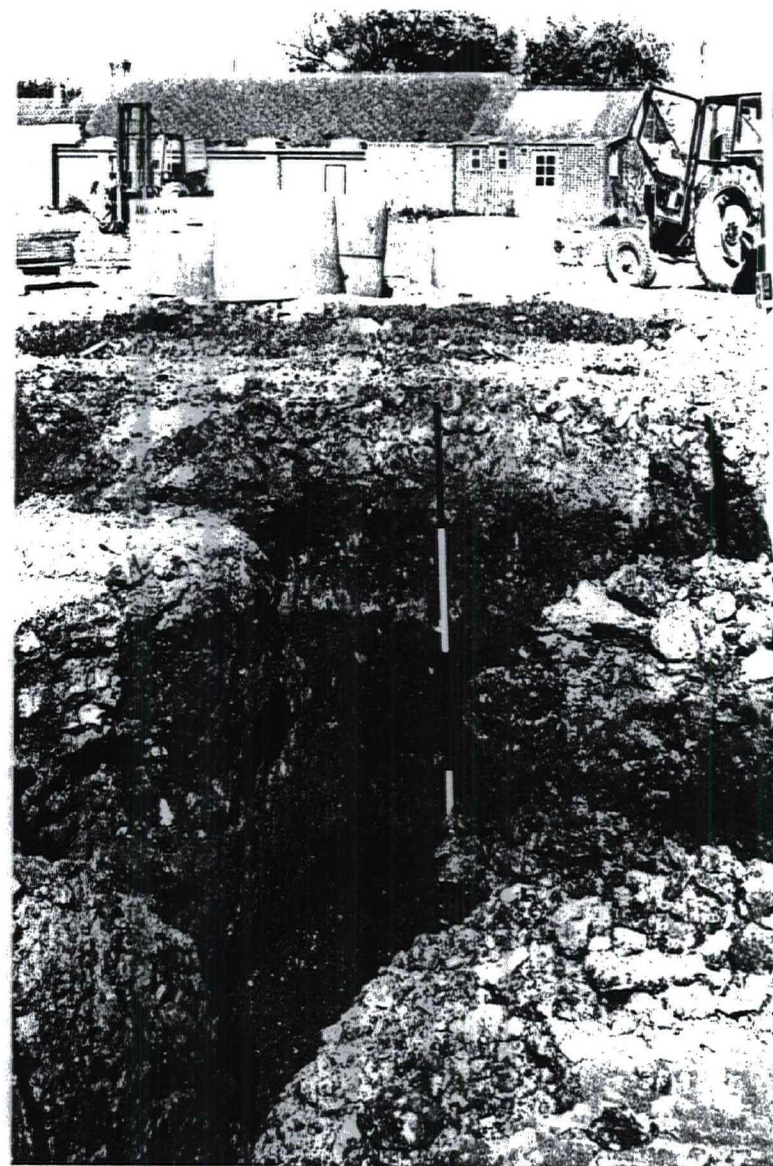
17. Plot 24 looking east



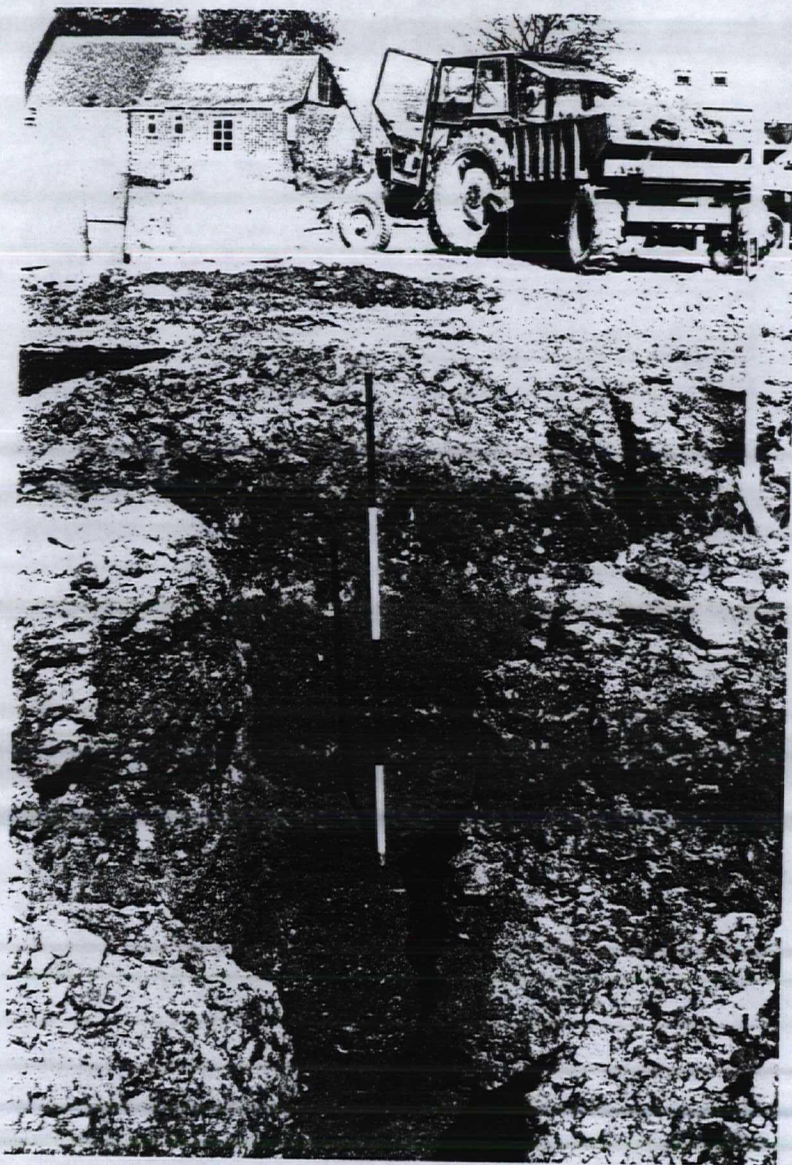
18. Plot 24 looking east



19. Plot 25 looking east



20. Plot 25 looking east



21. Plot 25 looking east



22. Plot 25 looking east

APPENDIX: SITE OBSERVATIONS

4th - 10th May 1994

Access road: The roadway into the northern part of the area had already been excavated through made-up ground to a depth of 0.5m. The plant was a Daewoo DH 130-2 tracked excavator with 0.6m, 0.9m and 1.6m-wide buckets.

Building foundations: The deposits revealed within each plot in turn, working downwards from ground level, are recorded below.

PLOT No.	DEPOSITS
7	Compacted brick rubble, concrete, timber, stone & soil, disturbed: 0.3m thick Dark brown soil containing brick rubble & stone, disturbed: 0.7m thick Red/brown sandy soil with gravel: 0.2m thick Overall depth of excavation: 1.2m
7 (garage)	Compacted brick rubble, concrete, timber, stone & soil, disturbed: 0.3m thick Dark brown soil containing brick rubble & stone, disturbed: 0.7m thick Overall depth of excavation: 1.0m
8	Compacted brick rubble, concrete, timber, stone & soil, disturbed: 1.0m thick (The greater depth of disturbance on Plot 8 is due to the presence of several drain interceptor chambers.) Dark brown soil containing brick rubble & stone, disturbed: 0.2m thick Overall depth of excavation: 1.2m
8 (garage)	Compacted brick rubble, concrete, timber, stone & soil, disturbed: 0.2m thick Dark brown soil containing brick rubble & stone, disturbed: 0.7m thick Overall depth of excavation: 0.9m
9	Compacted brick rubble, concrete, timber, stone & soil, disturbed: 0.2m thick Dark brown soil containing brick rubble & stone, disturbed: 0.3m thick Dark red/brown soil with stone fragments and random sandstone & limestone blocks, disturbed: 0.4m thick Overall depth of excavation: 0.9m

<i>PLOT NO.</i>	<i>DEPOSITS</i>
9 (garage)	Compacted brick rubble, concrete, timber, stone & soil, disturbed: 0.3m thick Dark brown soil containing brick rubble & stone, disturbed: 0.7m thick Overall depth of excavation: 1.0m
10	Compacted brick rubble, concrete, timber, stone & soil, disturbed: 0.5m thick Dark brown soil containing brick rubble & stone, disturbed: 0.25m thick Red/brown sandy soil with gravel: 0.25m thick Overall depth of excavation: 1.0m
10 (garage)	Compacted brick rubble, concrete, timber, stone & soil, disturbed: 0.2m thick Dark brown soil containing brick rubble & stone, disturbed: 0.7m thick Overall depth of excavation: 0.9m
11	Compacted brick rubble, concrete, timber, stone & soil, disturbed: 0.5m thick Dark brown soil containing brick rubble & stone, disturbed: 0.25m thick Red/brown sandy soil with gravel: 0.25m thick Overall depth of excavation: 1.0m
11 (garage)	Compacted brick rubble, concrete, timber, stone & soil, disturbed: 0.2m thick Dark brown soil containing brick rubble & stone, disturbed: 0.7m thick Overall depth of excavation: 0.9m
12	Compacted brick rubble, concrete, timber, stone & soil, disturbed: 0.5m thick Dark brown soil containing brick rubble & stone, disturbed: 0.25m thick Red/brown sandy soil with gravel: 0.25m thick Overall depth of excavation: 1.0m
12 (garage)	Compacted brick rubble, concrete, timber, stone & soil, disturbed: 0.2m thick Dark brown soil containing brick rubble & stone, disturbed: 0.7m thick Overall depth of excavation: 0.9m
13	Compacted brick rubble, concrete, timber, stone & soil, disturbed: 0.5m thick Dark brown soil containing brick rubble & stone, disturbed: 0.3m thick Overall depth of excavation: 0.8m
13 (garage)	Compacted brick rubble, concrete, timber, stone & soil, disturbed: 0.5m thick Dark brown soil containing brick rubble & stone, disturbed: 0.3m thick Overall depth of excavation: 0.8m

<i>PLOT No.</i>	<i>DEPOSITS</i>
14	Compacted brick rubble, concrete, timber, stone & soil, disturbed: 0.6m thick Dark brown soil containing brick rubble & stone, disturbed: 0.5m thick Overall depth of excavation: 1.1m
14 (garage)	Compacted brick rubble, concrete, timber, stone & soil, disturbed: 0.55m thick Dark brown soil containing brick rubble & stone, disturbed: 0.45m thick Overall depth of excavation: 1.0m
15	Compacted brick rubble, concrete, timber, stone & soil, disturbed: 0.6m thick Dark brown soil containing brick rubble & stone, disturbed: 0.5m thick Overall depth of excavation: 1.1m
16	Compacted brick rubble, concrete, timber, stone & soil, disturbed: 0.6m thick Dark brown soil containing brick rubble & stone, disturbed: 0.5m thick Overall depth of excavation: 1.1m
(17 - 21 incl.	Unexcavated at 10th May 1994)
22	Compacted brick rubble, concrete, timber, stone & soil, disturbed: 1.2m thick Dark brown soil containing brick rubble & stone, disturbed: 0.2m thick Dark red/brown soil containing stone fragments and random sandstone & limestone blocks, disturbed: 0.1m thick Overall depth of excavation: 1.5m
22 (garage)	Compacted brick rubble, concrete, timber, stone & soil, disturbed: 0.9m thick Dark brown soil containing brick rubble & stone, disturbed: 0.6m thick Dark red/brown soil containing stone fragments and random sandstone & limestone blocks, disturbed: 0.1m thick Overall depth of excavation: 1.6m
23	Compacted brick rubble, concrete, timber, stone & soil, disturbed: 0.25m thick Dark brown soil containing brick rubble & stone, disturbed: 1.1m thick Dark red/brown soil containing stone fragments and random sandstone & limestone blocks, disturbed: 0.15m thick (In the west corner of Plot 23 this layer was excavated to a thickness of 1.25m because of the degree of unconsolidation. Modern lorry parts were found at 2.45m below ground level.) Overall depth of excavation: 1.5m (2.6m in the west corner)

PLOT No. DEPOSITS

- 23 (garage) Compacted brick rubble, concrete, timber, stone & soil, disturbed: 0.15m thick
Dark brown soil containing brick rubble & stone, disturbed: 1.35m thick
Dark red/brown soil containing stone fragments and random sandstone & limestone blocks, disturbed: 0.15m thick
Overall depth of excavation: 1.65m
- 24 Compacted brick rubble, concrete, timber, stone & soil, disturbed: 0.15m thick
Dark brown soil containing brick rubble & stone, disturbed: 1.5m thick
Dark red/brown soil containing stone fragments & random sandstone and limestone blocks, disturbed: 0.4m thick
Clean moist yellow sand & gravel, natural: 0.15m exposed
Overall depth of excavation: 2.2m
- 24 (garage) Compacted brick rubble, concrete, timber, stone & soil, disturbed: 0.15m thick
Dark brown soil containing brick rubble & stone, disturbed: 1.5m thick
Dark red/brown soil containing stone fragments and random sandstone & limestone blocks, disturbed: 0.4m thick
Clean moist yellow sand & gravel, natural: 0.15m exposed
Overall depth of excavation: 2.2m
- 25 Compacted brick rubble, concrete, timber, stone & soil, disturbed: 0.25m thick
Dark brown soil containing brick rubble & stone, disturbed: 1.0m thick
Dark red/brown soil containing stone fragments and random sandstone & limestone blocks, disturbed: 0.65m thick
(In the southern side of Plot 25 there was an area of unconsolidated large irregular sandstone and limestone rocks mixed with smaller fragments.)
Overall depth of excavation: 1.9m
- 25 (garage) Compacted brick rubble, concrete, timber, stone & soil, disturbed: 0.25m thick
Dark brown soil containing brick rubble & stone, disturbed: 1.0m thick
Dark red/brown soil containing stone fragments and random sandstone & limestone blocks, disturbed: 0.65m thick
Overall depth of excavation: 1.9m

13th June 1994

Service trenches: The plant was an Akerman H10B LC tracked excavator with 0.4m and 0.6m-wide buckets.

TRENCH No. DEPOSITS

- 1 (14m in length, for foul water sewer from site boundary to chamber F3, including F3.)

Compacted brick rubble, concrete, stone & soil, disturbed: 0.4m thick
Dark red/brown soil containing random sandstone & limestone blocks, disturbed:
0.7m thick
Red/brown sandy soil with gravel, undisturbed: 3.4m thick
Sand with sub-rounded cobbles >0.15m, natural: 0.2m exposed
Overall depth of excavation: 4.7m

- 2 (26m in length, for foul water sewer from chamber F3 to chamber F2, including F2.)

Dark brown soil containing building rubble & scrap metal, disturbed: 0.3m
Red/brown sandy soil with gravel, undisturbed: 3.4m thick
Sand with sub-rounded cobbles >0.15m, natural: 0.2m exposed
Overall depth of excavation: 3.9m

- 3 (20m in length, for foul water sewer from chamber F2 to chamber F1.

The excavation for chamber F1 was not completed during the inspection.)

Dark brown soil containing building rubble & scrap metal, disturbed: 0.2m
Red/brown sandy soil with gravel, undisturbed: 3.2m thick
Sand with sub-rounded cobbles >0.15m, natural: 0.2m exposed
Overall depth of excavation: 3.6m

25th July 1994

House foundations: Excavation was by a Daewoo DH 130-2 tracked excavator with a 0.9m-wide bucket.

PLOT No. DEPOSITS

- 19 Compacted brick rubble, concrete, timber, stone & soil, disturbed: 0.4m thick
Dark red/brown sandy soil containing some brick rubble & stone, disturbed:
0.3m thick
Clean moist yellow sand & gravel, natural: 0.4m exposed
Overall depth of excavation: 1.1m
- 20 Compacted brick rubble, concrete, timber, stone & soil, disturbed: 0.35m thick
Dark red/brown sandy soil containing stone & brick fragments, disturbed:
0.65m thick
Red/brown sandy soil containing well-rounded stones & gravel: 0.2m thick
Clean moist yellow sand & gravel, natural: 0.2m exposed
Overall depth of excavation: 1.4m
- 21 Compacted brick rubble, concrete, timber, stone & soil, disturbed: 0.8m thick
Red/brown sandy soil containing well-rounded stones & gravel: 0.2m thick
Clean moist yellow sand & gravel, natural
Overall depth of excavation: 1.0m

December 1994

Building foundations:

PLOT No. DEPOSITS

- 17 Compacted brick rubble, concrete, timber, stone & soil, disturbed: 0.4m thick
(& garage) Dark red/brown sandy soil with brick rubble & stone, disturbed: 0.3m thick
Clean moist yellow sand and gravel, natural: 0.2m exposed
Overall depth of excavation: 0.9m
- 18 Compacted brick rubble, concrete, timber, stone & soil, disturbed: 0.4m thick
(& garage) Dark red/brown sandy soil with brick rubble & stone, disturbed: 0.3m thick
Clean moist yellow sand and gravel, natural: 0.2m exposed
Overall depth of excavation: 0.9m