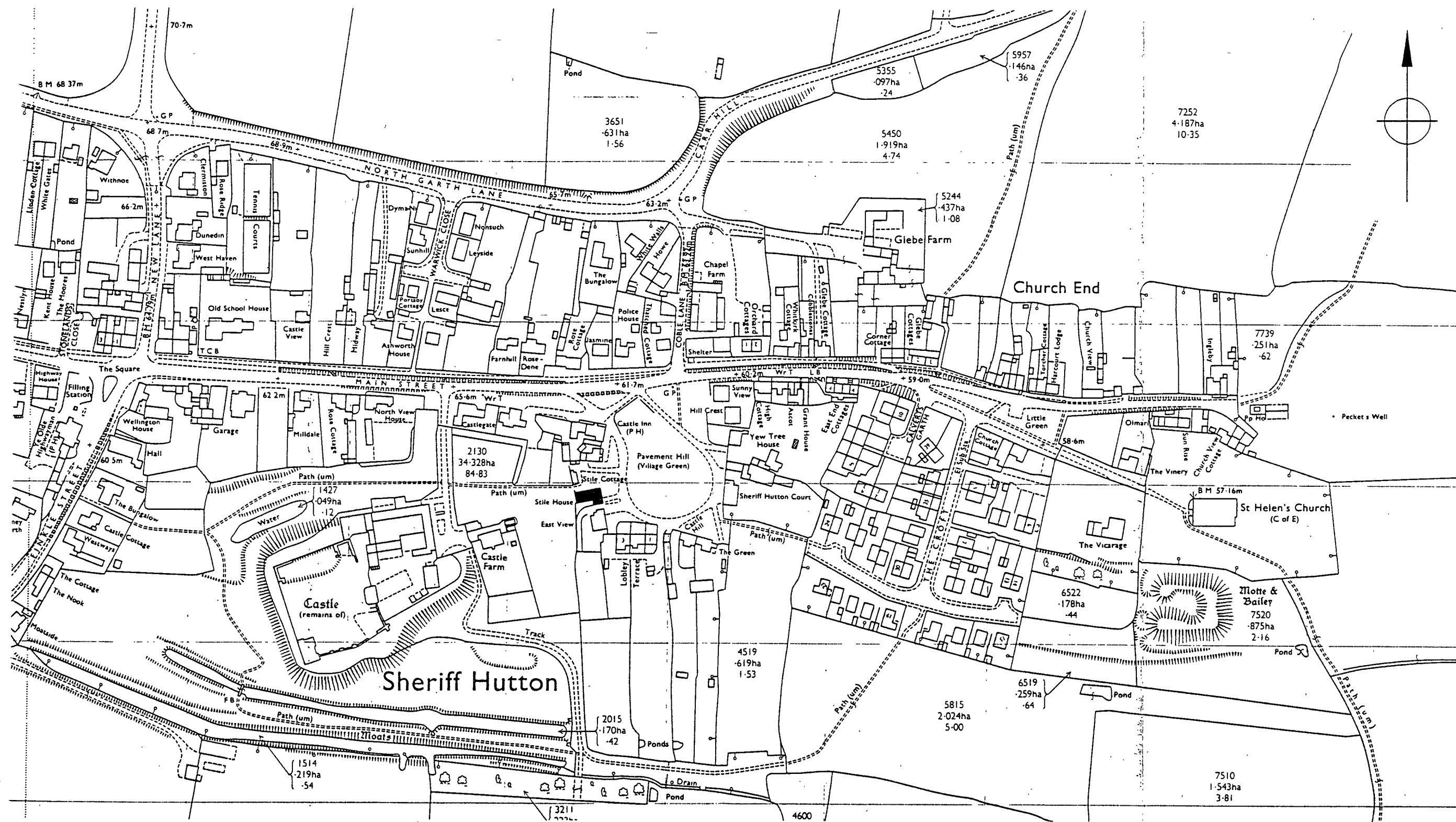


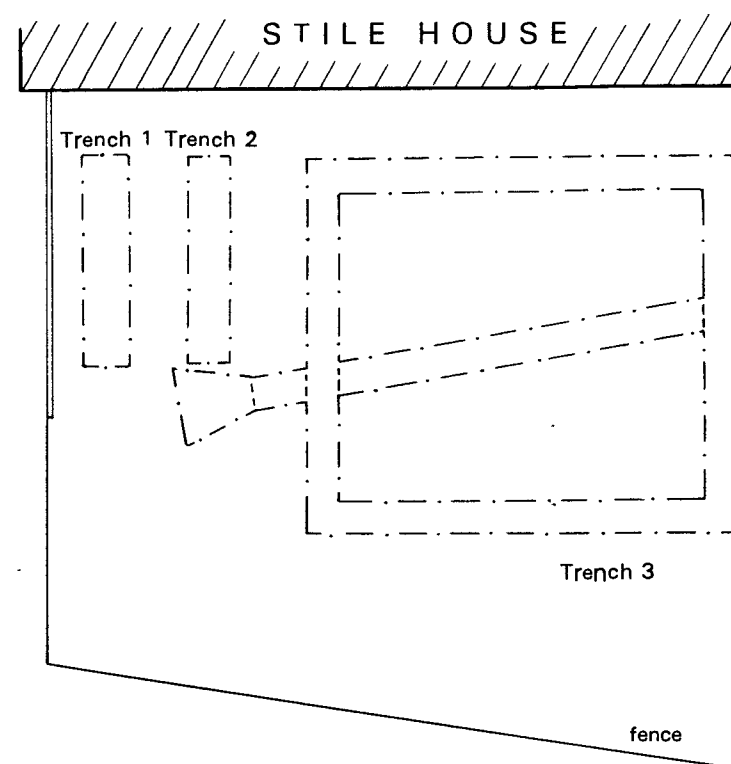
Reproduced from the 1985 Ordnance Survey 1:25,000 map with permission of The Controller of Her Majesty's Stationary Office, © Crown copyright. EDAS Licence A50780A0001

	SCALE 1:25,000	PROJECT STILE HOUSE, SHERIFF HUTTON	EDAS
	DATE DEC 1999	TITLE GENERAL LOCATION PLAN	FIGURE 1



Reproduced from the 1979 Ordnance Survey 1:2,500 map
with permission of The Controller of Her Majesty's Stationary
Office, © Crown copyright. EDAS Licence A50760A0001

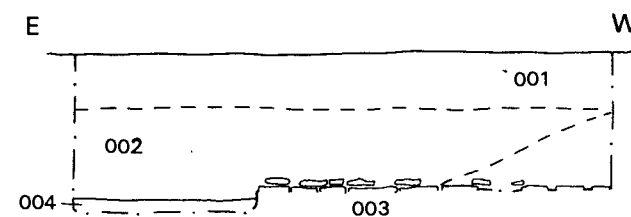
PROJECT STILE HOUSE, SHERIFF HUTTON	
TITLE VILLAGE PLAN	
SCALE 1:2,500	DATE DEC 1999
EDAS	FIGURE 2



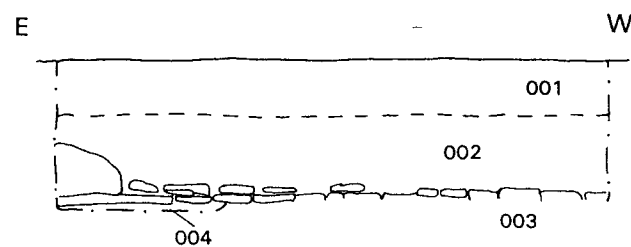
SITE PLAN

0 5m

TRENCH 1 SECTION

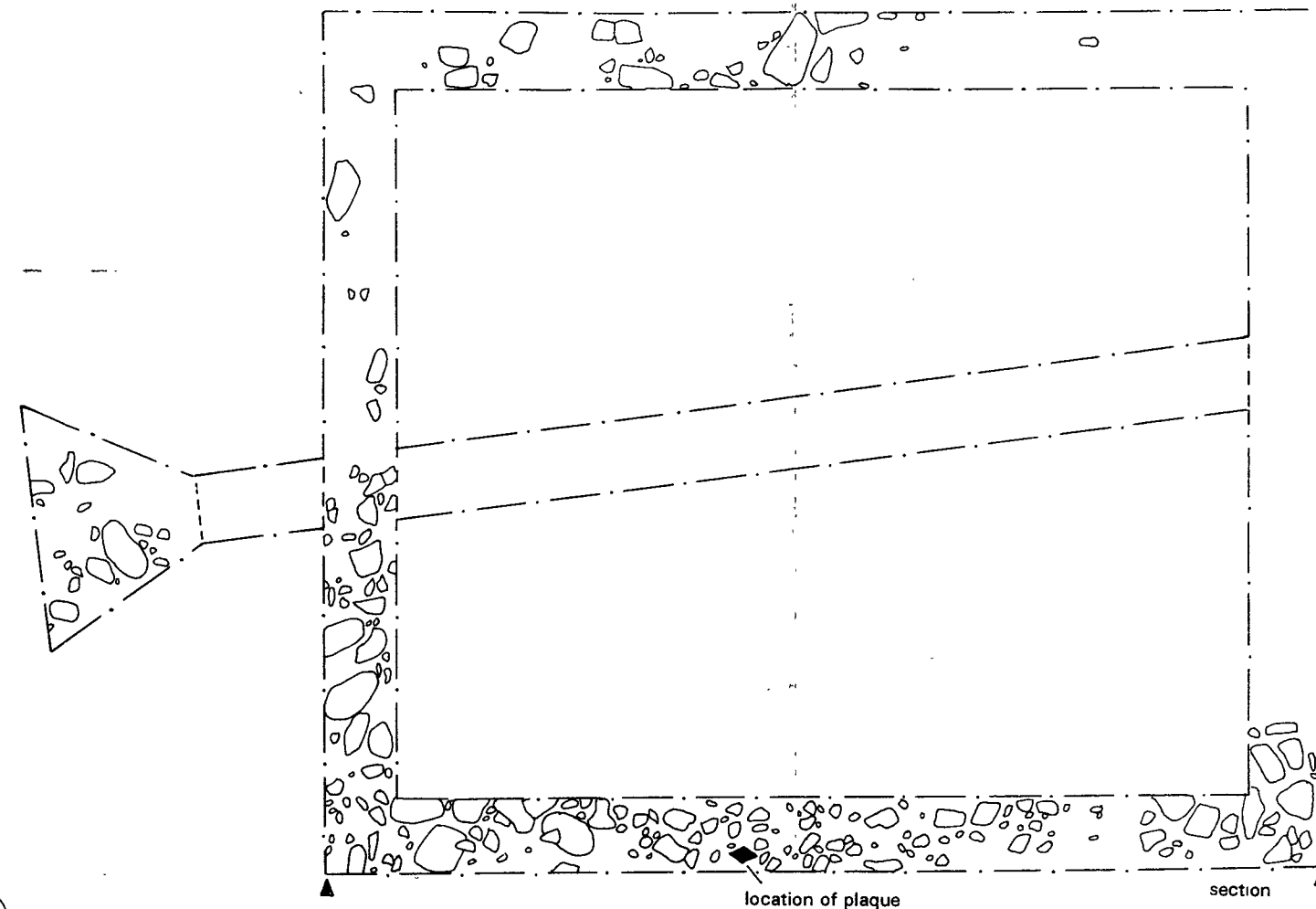


TRENCH 2 SECTION



- 001 Medium brown clay topsoil
- 002 Dark brown/black clay loam
- 003 Consolidated layer of stones and cobbles
- 004 Dark brown orange clay (natural)

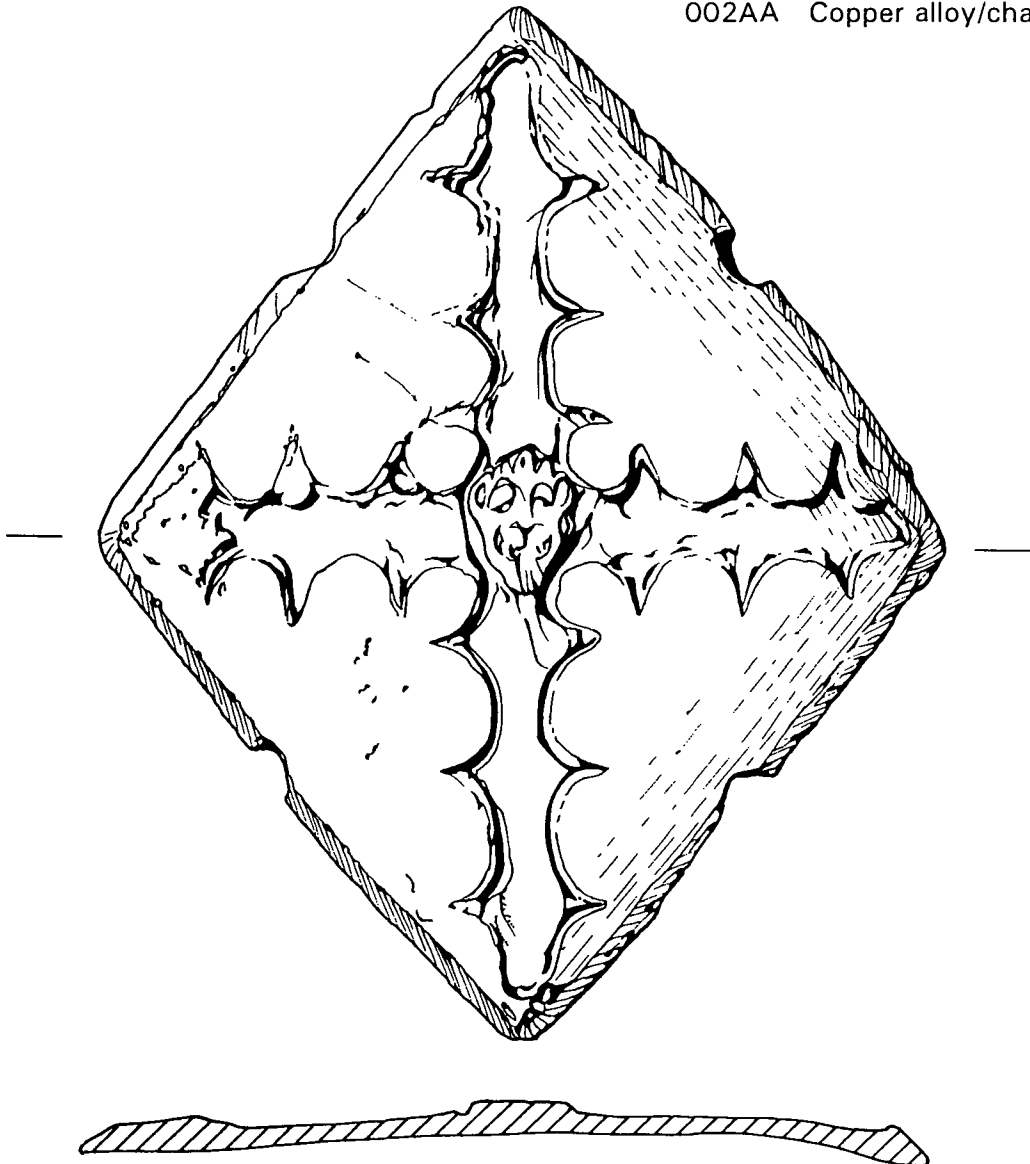
0 3m



TRENCH 3 PLAN AND SECTION

PROJECT STILE HOUSE, SHERIFF HUTTON	
TITLE EXCAVATED FEATURES	
SCALE AS SHOWN	DATE DEC 1999
EDAS	FIGURE 3

Mount or plaque
002AA Copper alloy/champlevé enamel



Stag's head button
001AA. Copper alloy/iron

PROJECT		STILE HOUSE, SHERIFF HUTTON	
TITLE		ILLUSTRATED FINDS	
SCALE	2 1	DATE	DEC 1999
EDAS		FIGURE	4



Plate 1: Site after excavation of Trench 3, looking north

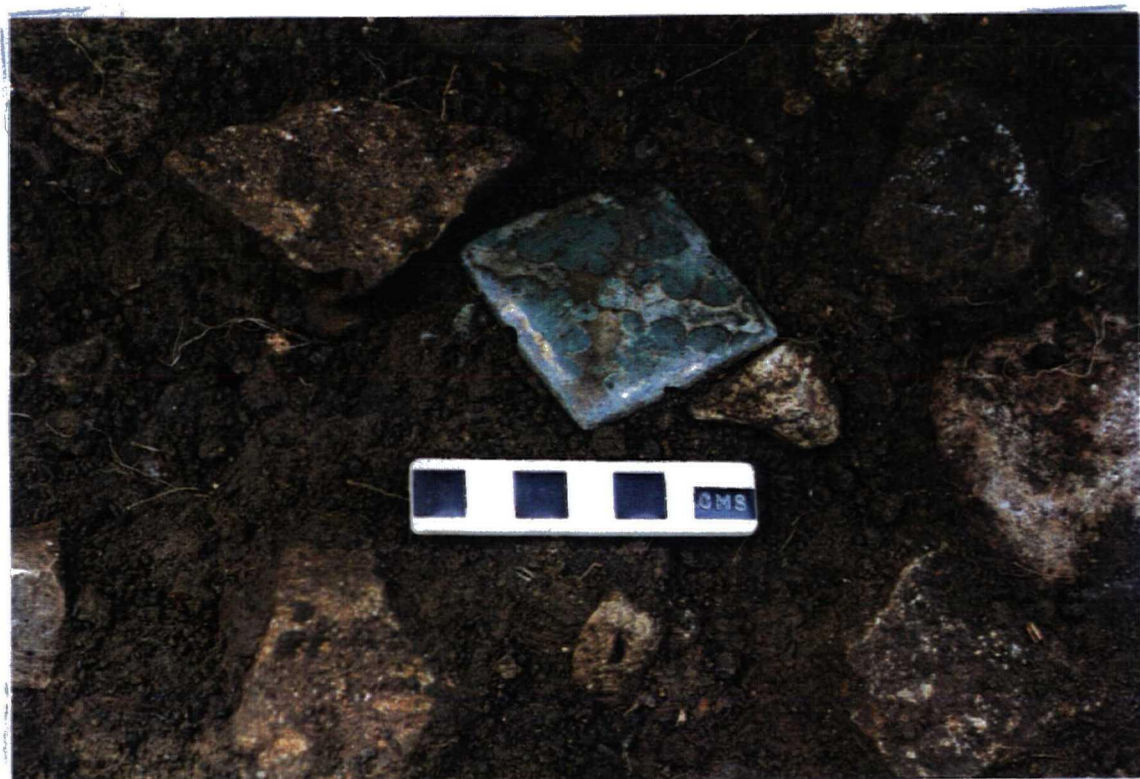


Plate 2: View of plaque *in situ*



Plate 3: Stag's head button, after conservation



Plate 4: Plaque, after conservation