

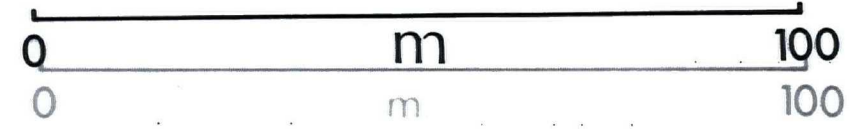
# Nosterfield - Tilcon Quarry

## Nosterfield - Tilcon Quarry Location Plan

Topographical Survey

Scale 1:990

Bandwidth 25nT, 250 Shades Greyscale



Limit of Survey

PHASE ONE

MOOR LANE

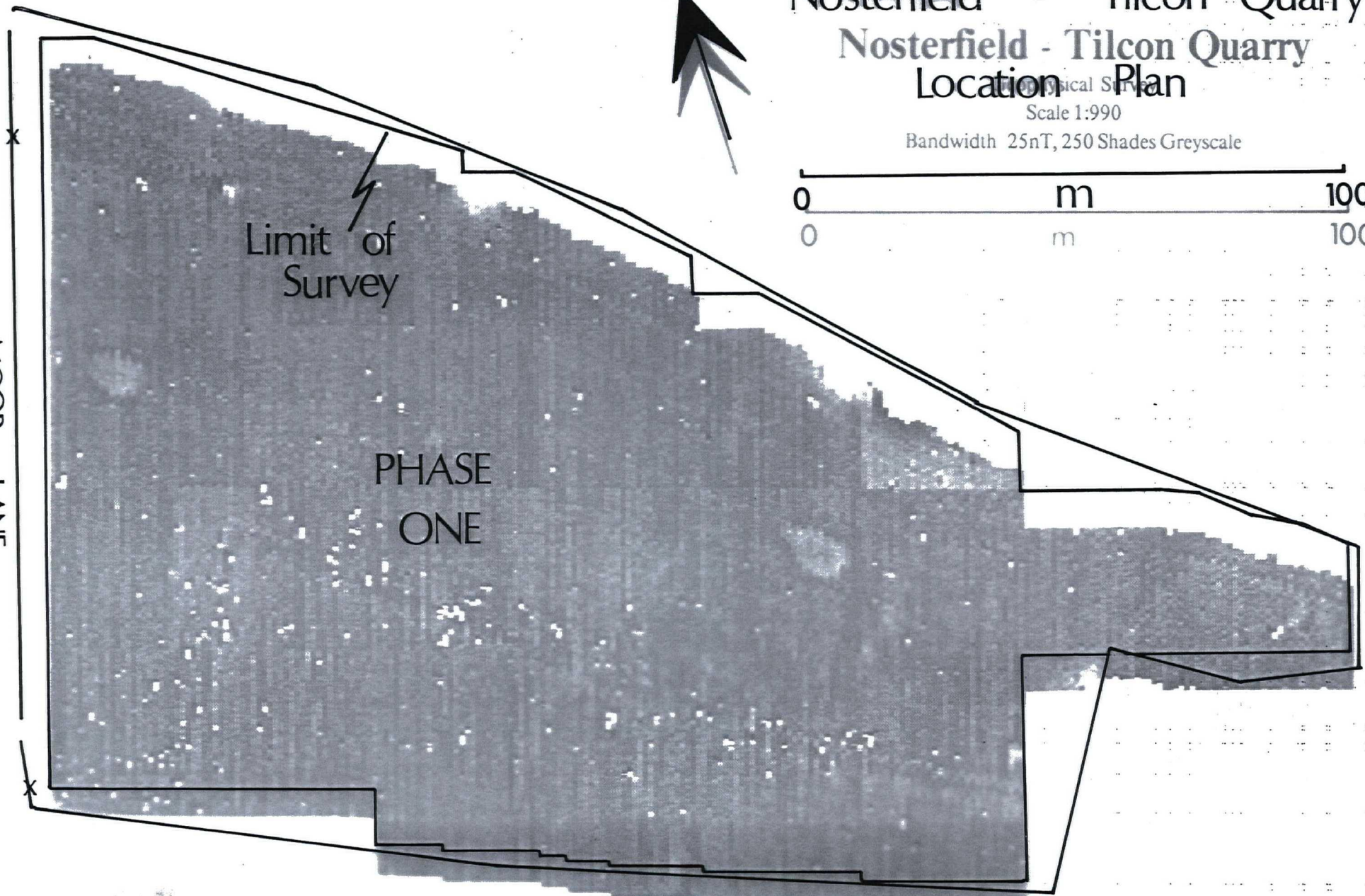


figure 1



Nosterfield - Tilcon Quarry

Location Plan

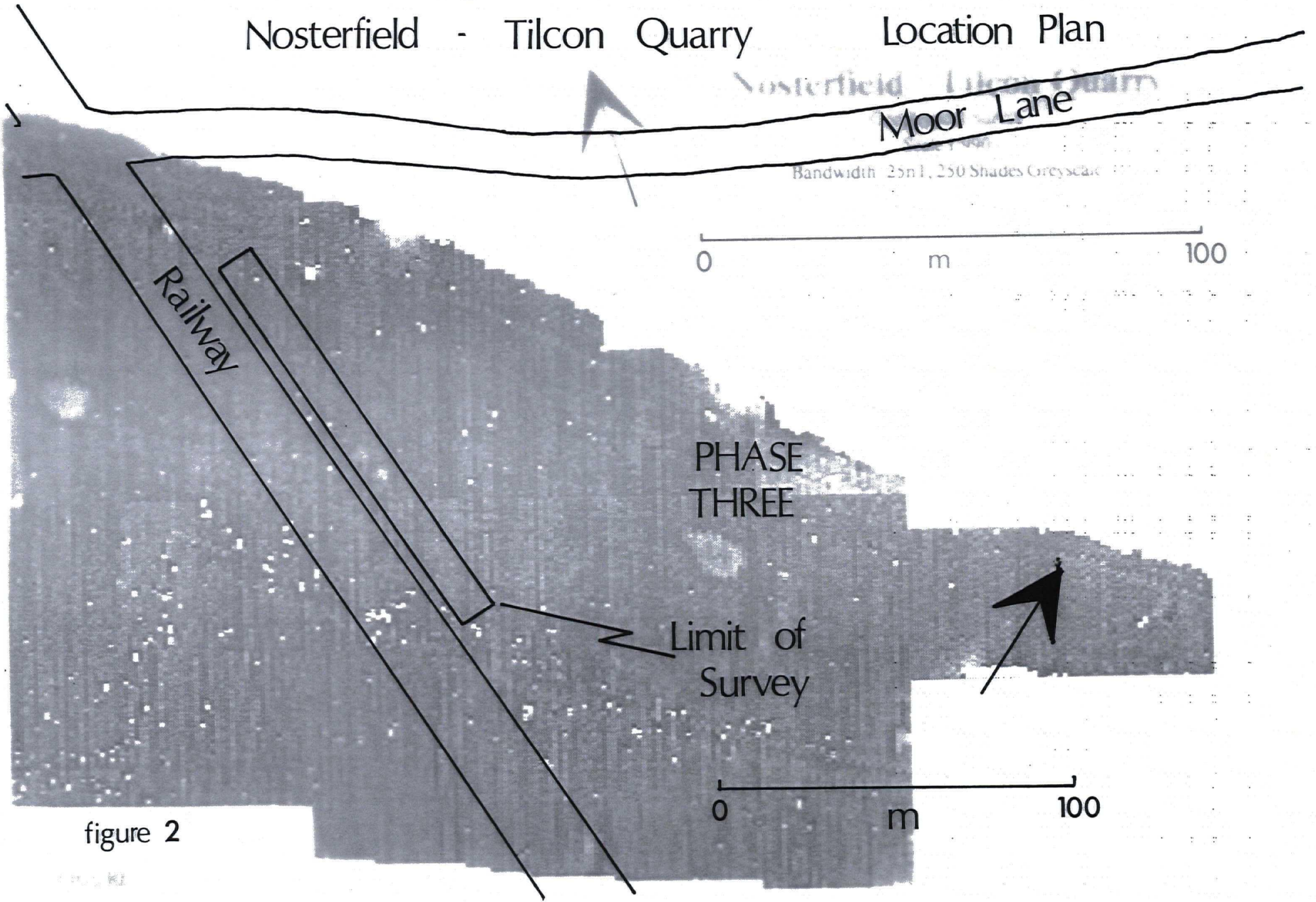


figure 2



# Nosterfield - Tilcon Quarry

Geophysical Survey

Scale 1:990

Bandwidth 25nT, 250 Shades-Greyscale

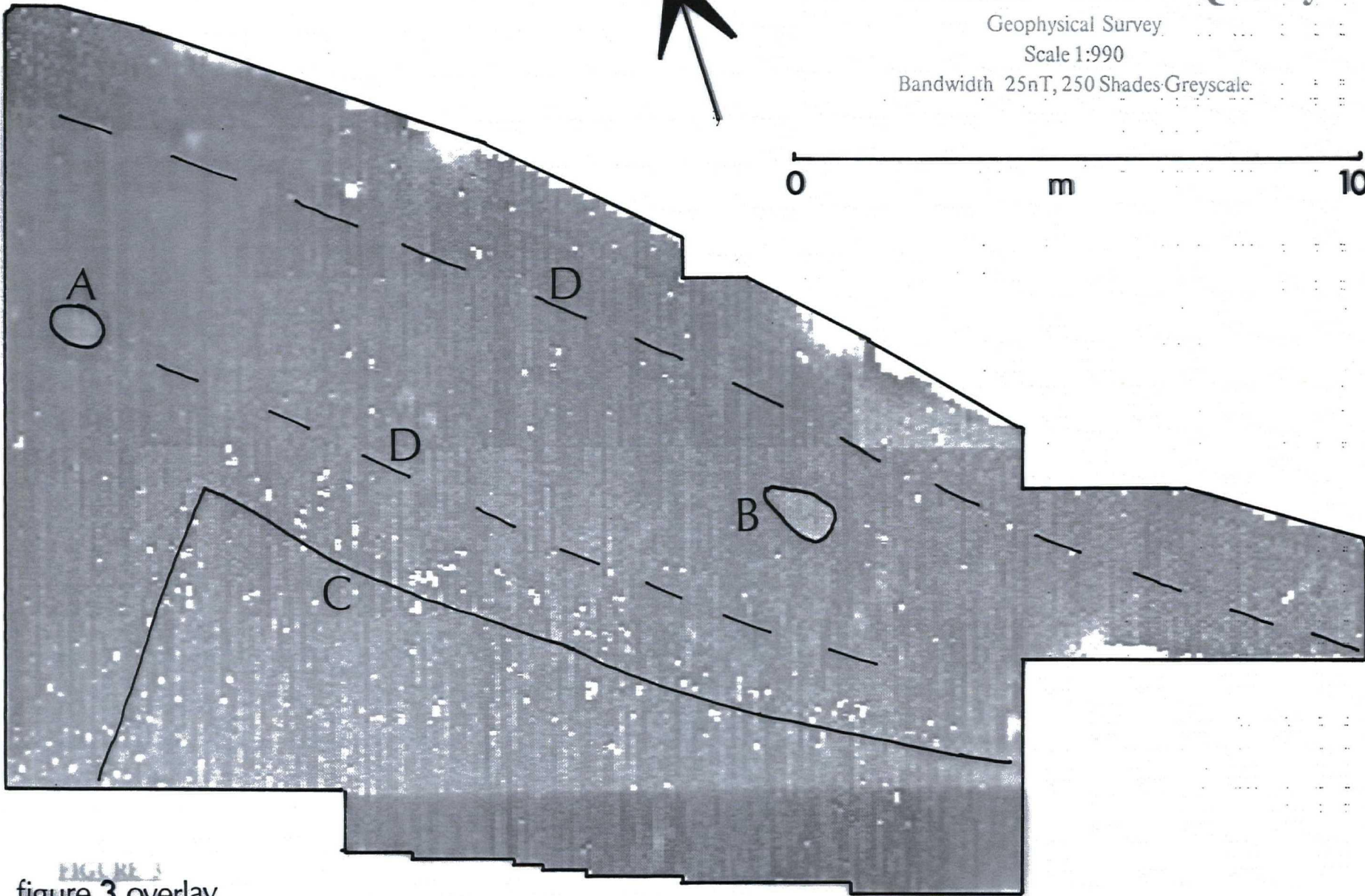


FIGURE 3  
figure 3 overlay



# Nosterfield - Tilcon Quarry

Geophysical Survey

Scale 1:990

Bandwidth 10nT, 250 Shades Greyscale

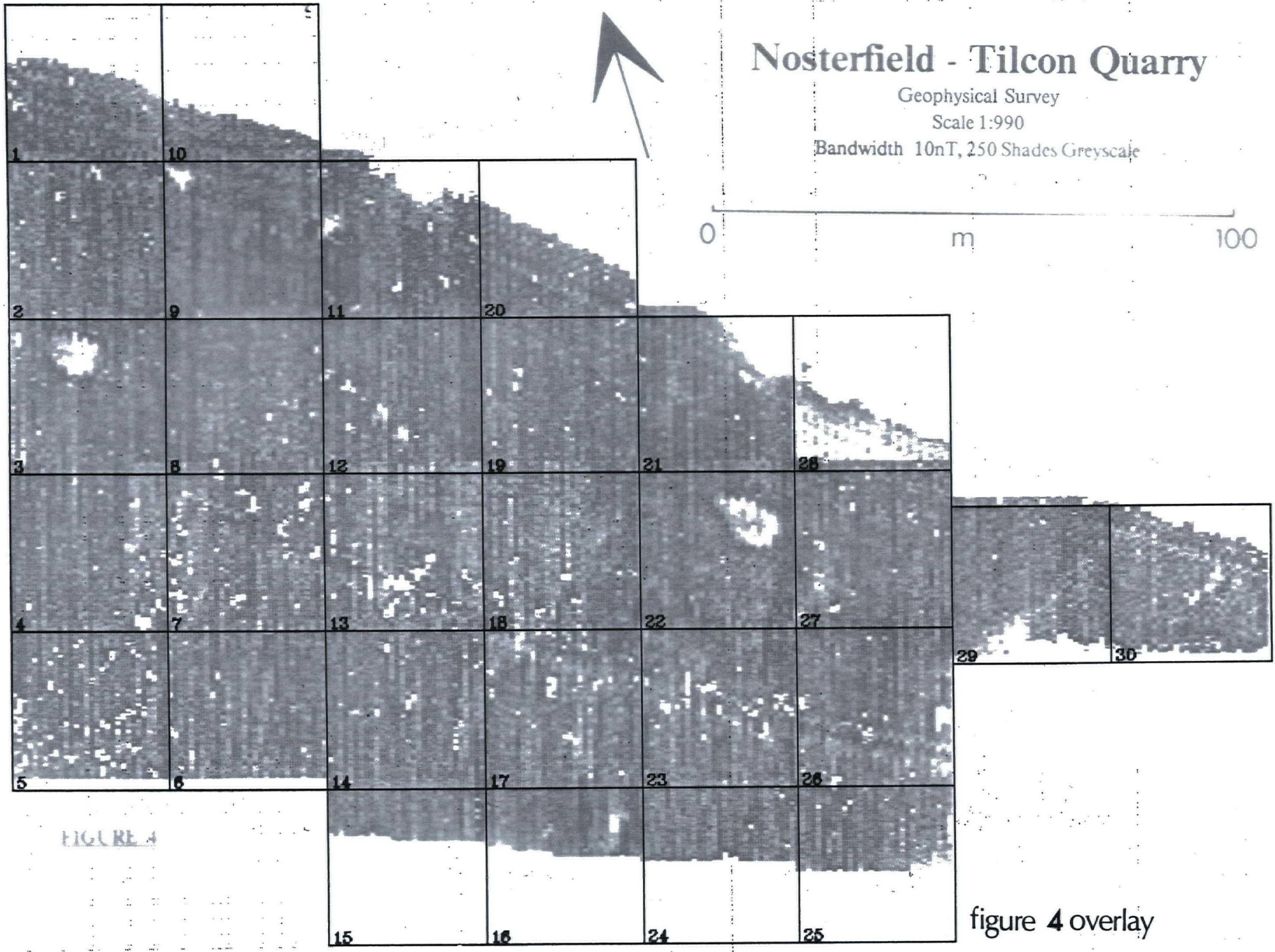
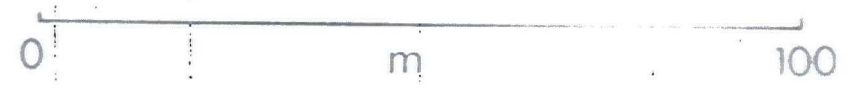


FIGURE 4

figure 4 overlay

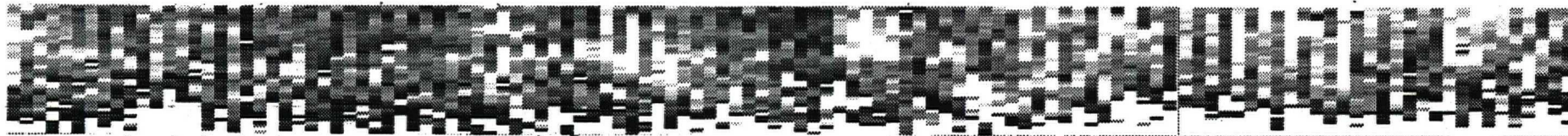
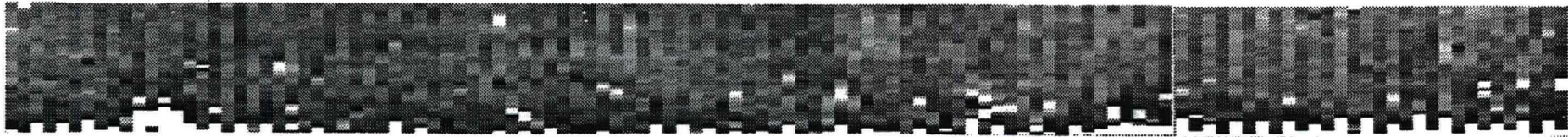
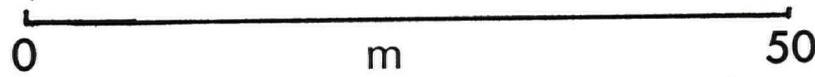


# Nosterfield - Tilcon Quarry

Geophysical Survey

Scale 1:495

Bandwidth 25nT (above) and 10nT (below), 250 Shades Greyscale



**FIGURE 5**

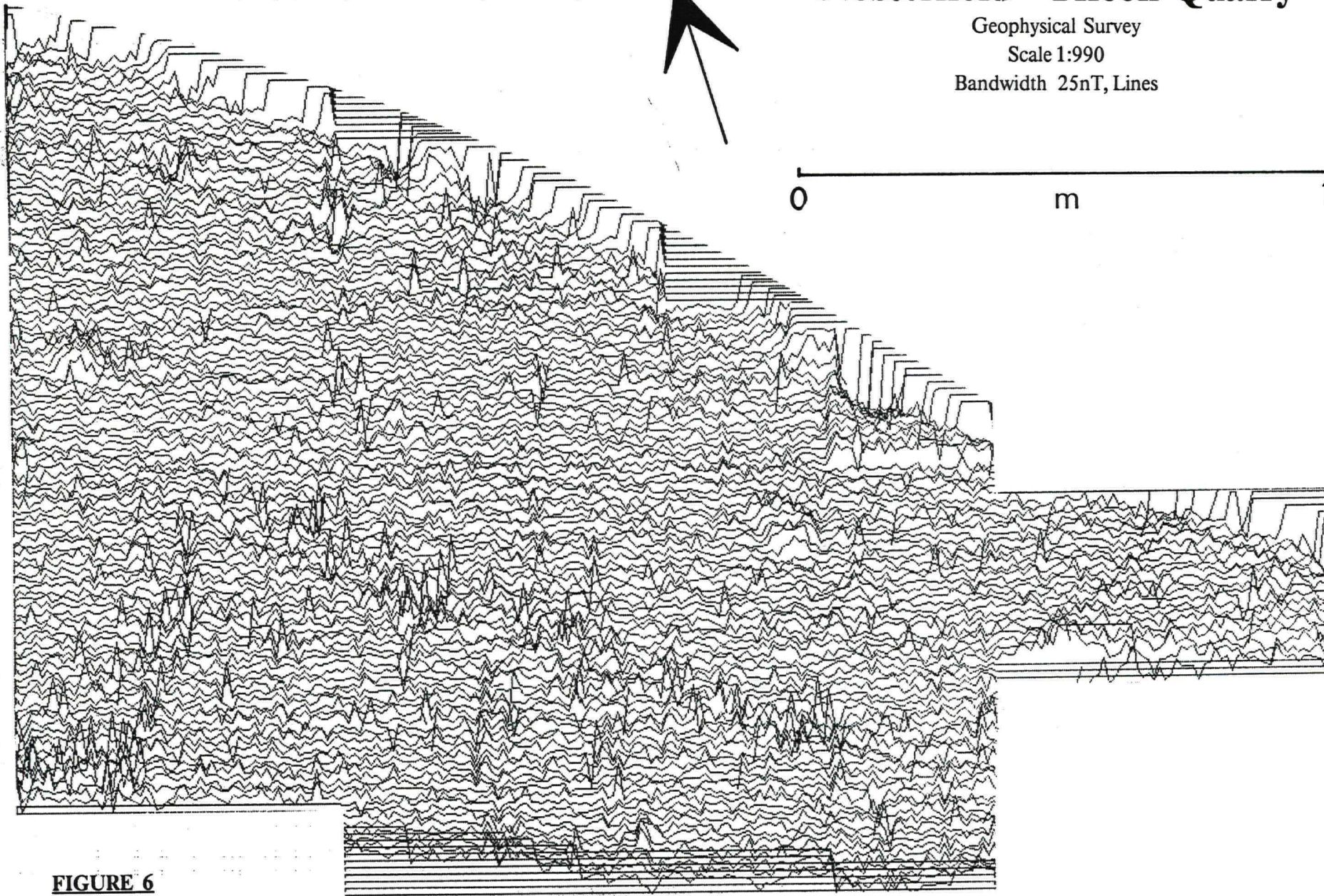
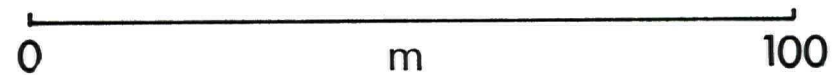


# Nosterfield - Tilcon Quarry

Geophysical Survey

Scale 1:990

Bandwidth 25nT, Lines



**FIGURE 6**

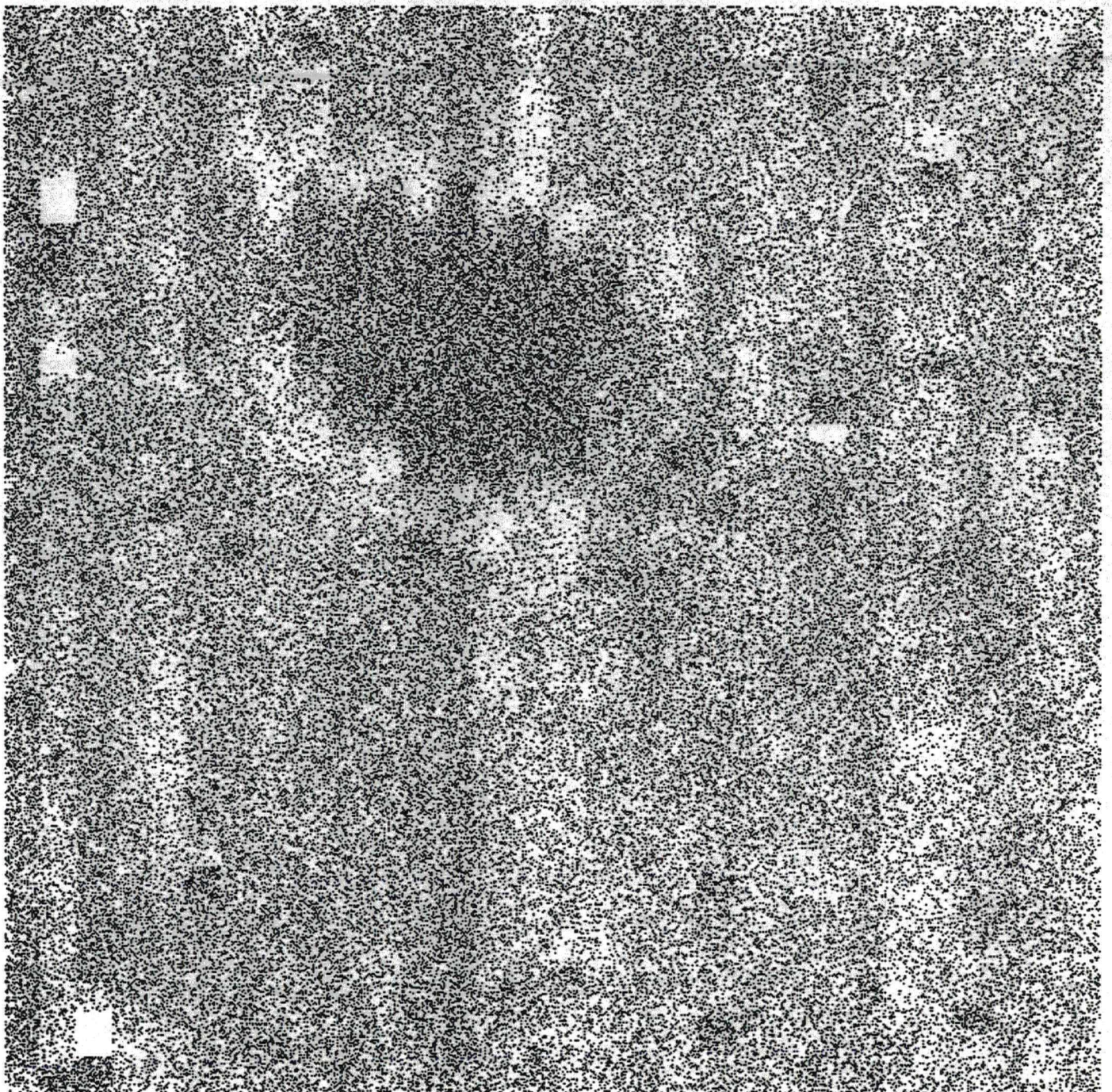
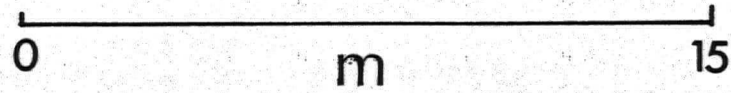


# Nosterfield - Tilcon Quarry

Geophysical Survey

Scale 1:165

Bandwidth 10nT, Dot Density Grid3



**FIGURE 7**

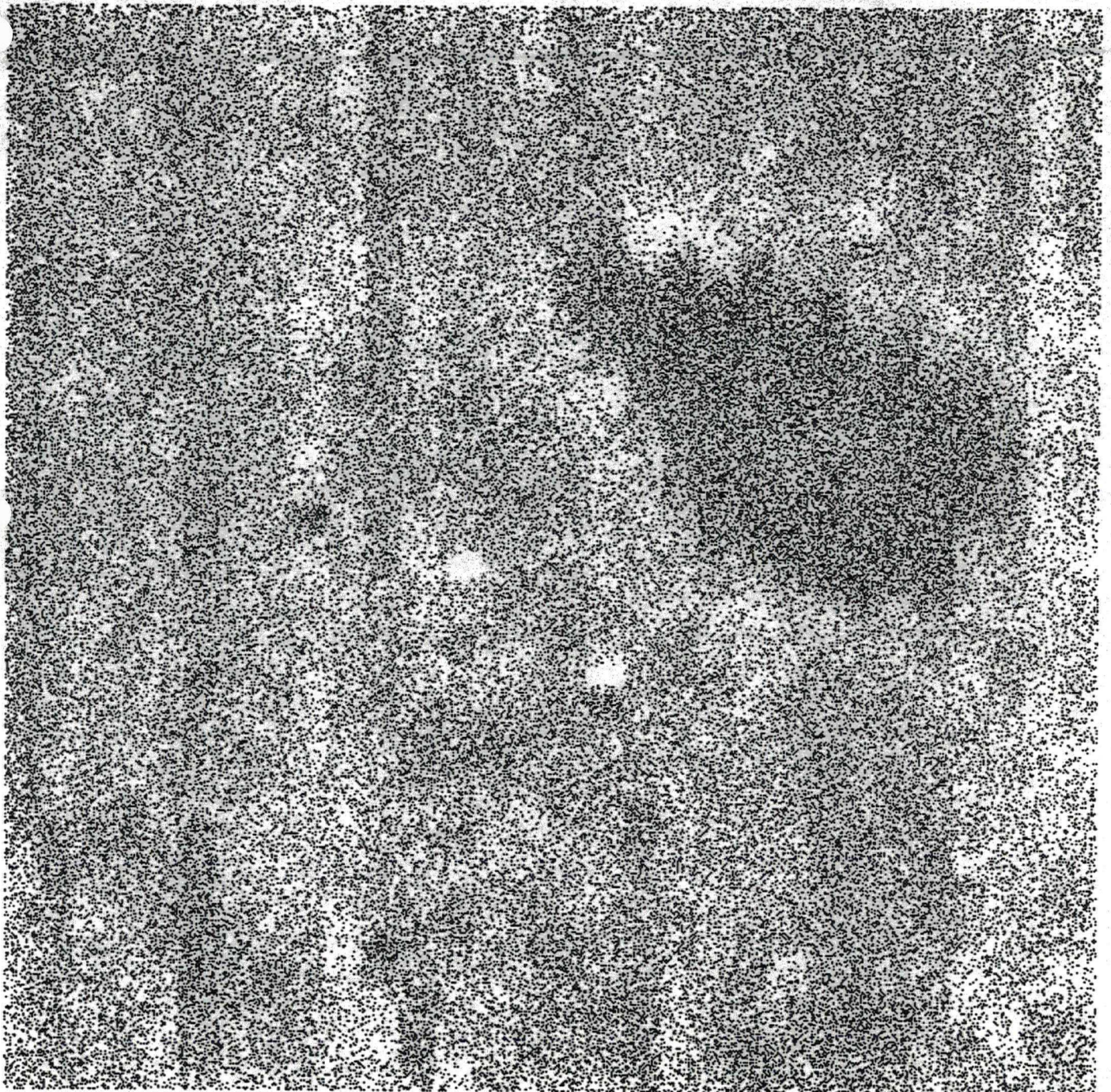
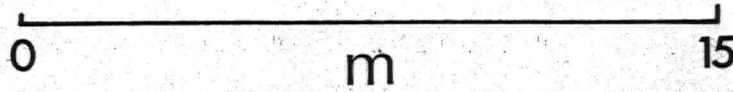


# Nosterfield - Tilcon Quarry

Geophysical Survey

Scale 1:165

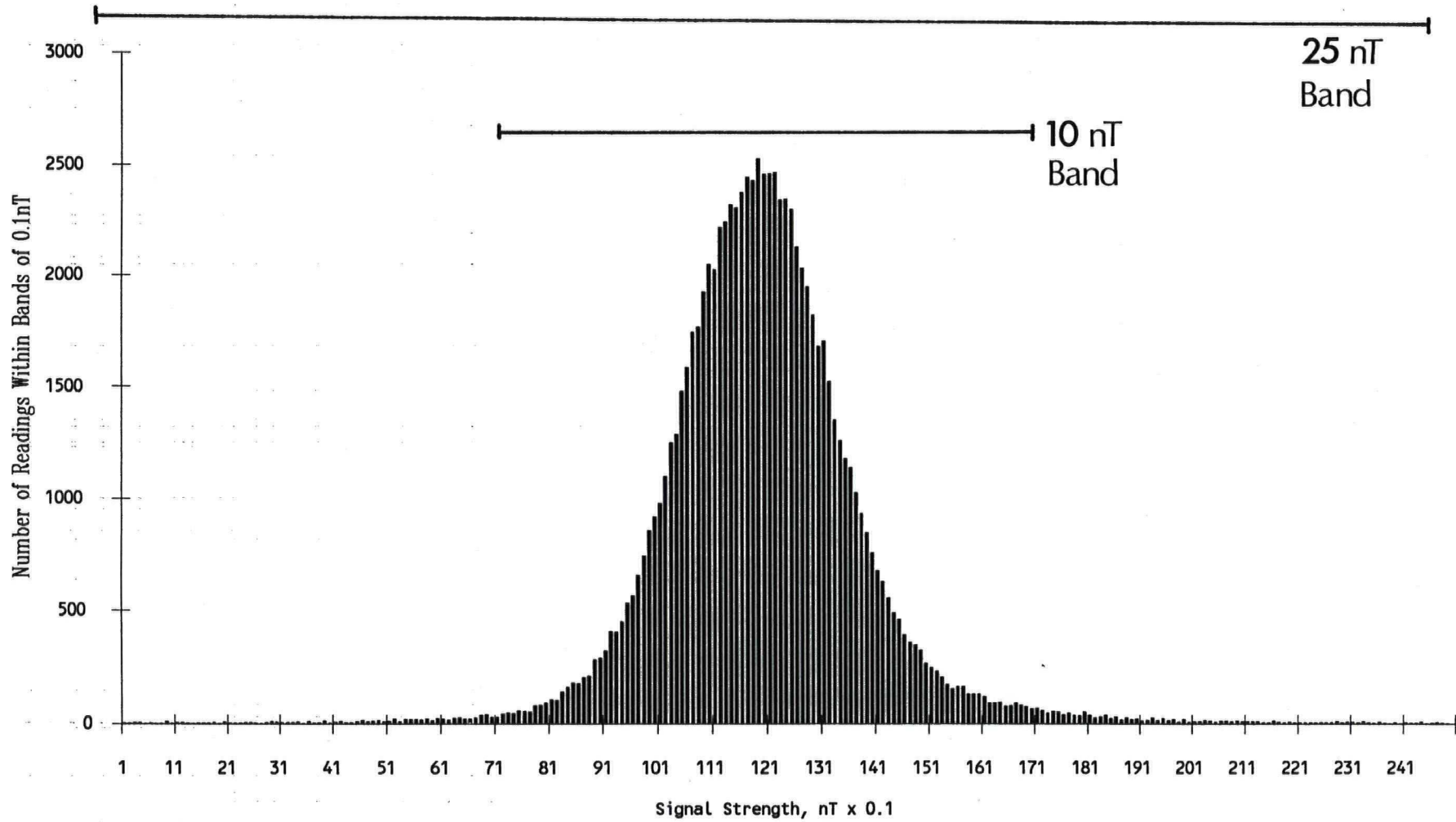
Bandwidth 10nT, Dot Density Grid22



**FIGURE 8**



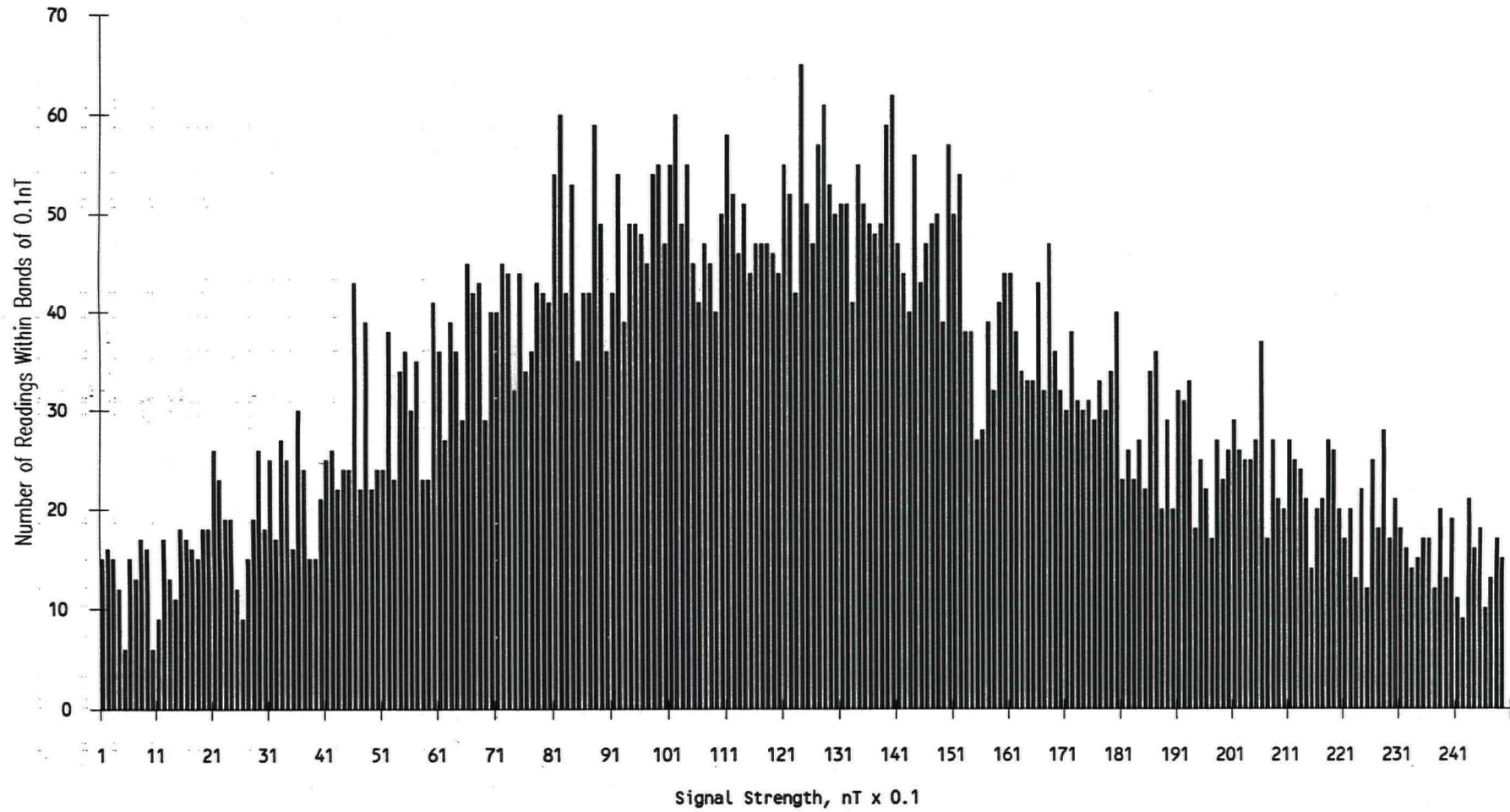
Nosterfield - Tilcon Quarry, Geophysical Survey. Distribution of Reading Values



**FIGURE 9**



West Heselton, North Yorkshire. Distribution of Reading Values



**FIGURE 10**

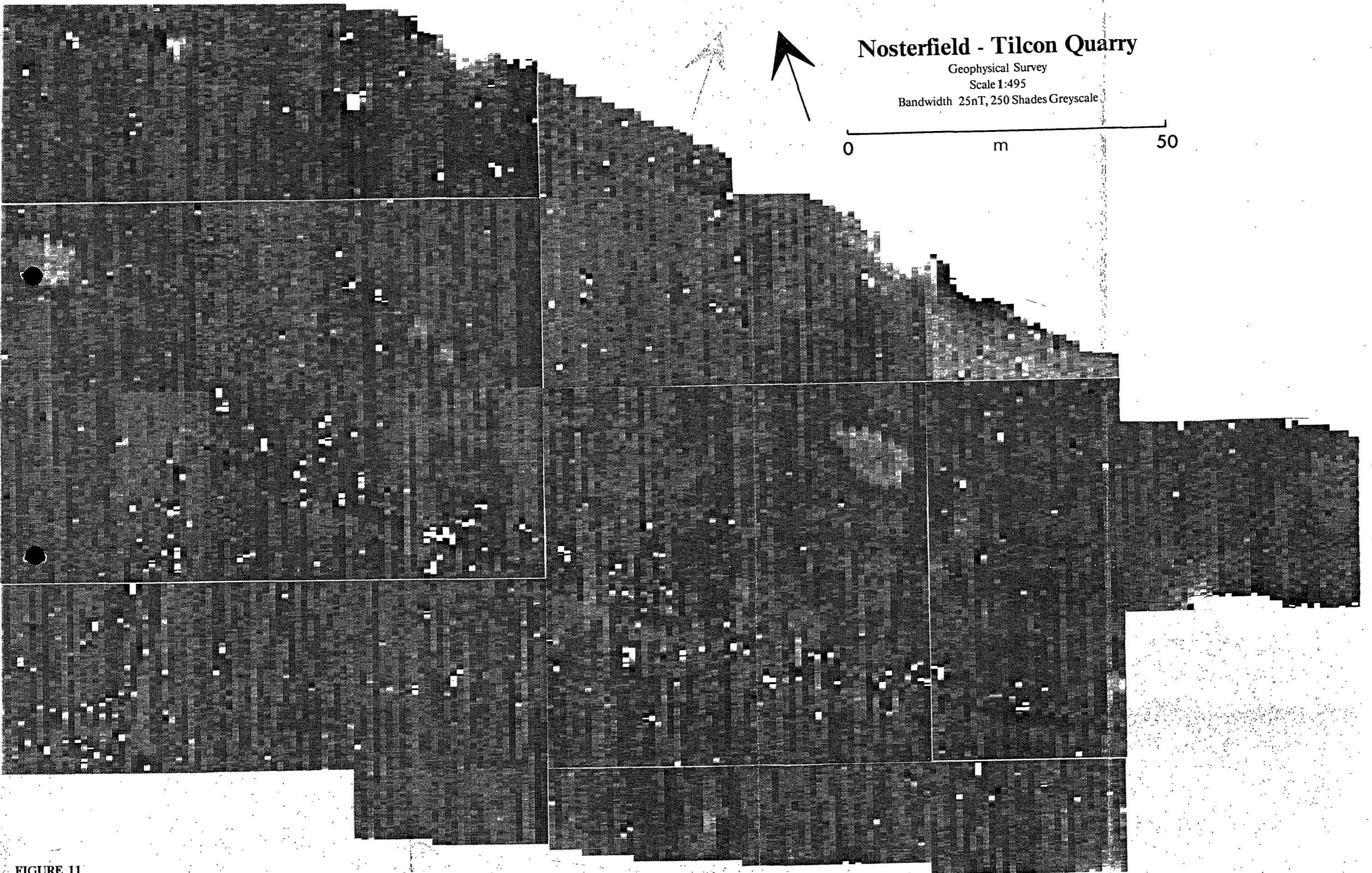
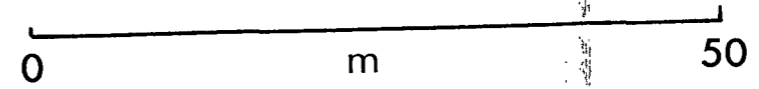


# Nosterfield - Tilcon Quarry

Geophysical Survey

Scale 1:495

Bandwidth 25nT, 250 Shades Greyscale



**FIGURE 11**

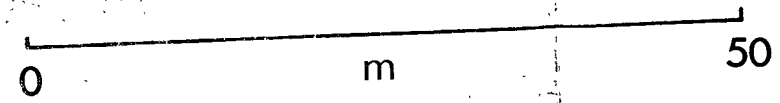


# Nosterfield - Tilcon Quarry

Geophysical Survey

Scale 1:495

Bandwidth 10nT, 250 Shades Greyscale



**FIGURE 12**



10:50 No. 003 P. 04  
22 Apr 91

TOPSOIL MOUNDS ALONG MOOR LANE  
TO BE SHAPED AND SEDED PROVIDING  
A EARTH SCREEN TO WORKINGS

142  
24874  
308

ROAD CROSSING

MOOR LANE

HAUL ROAD (Ph 2 & 3)

MOUND (A) TOPSOIL +3m

MOUND (E) TOPSOIL

MOUND (C)

Ph 3

Ph 2

Ph 1

MOUND (D) +5m

CLAY

MAXIMUM WORKING DEPTH TO 39.5m. AOD

1 IN 2 BATTER  
AT 5m STAND OFF

1 IN 2 BA  
AT 5m ST

WORKING OF COMMON BOUNDARY

03

