



Plate 1: High Farm complex from the north-west (photo 6/10)



Plate 2: Garage and coal houses (Building 2), looking east (photo 6/9)



Plate 3: Farm building (Building 1), looking north-east



Plate 4: Farm building (Building 5), looking north-west



Plate 5: Farmhouse (Building 7), looking north



Plate 6: Farmhouse (Building 7), looking south-east



Plate 7: North elevation of barn (Building 8), looking south (photo 4/17)

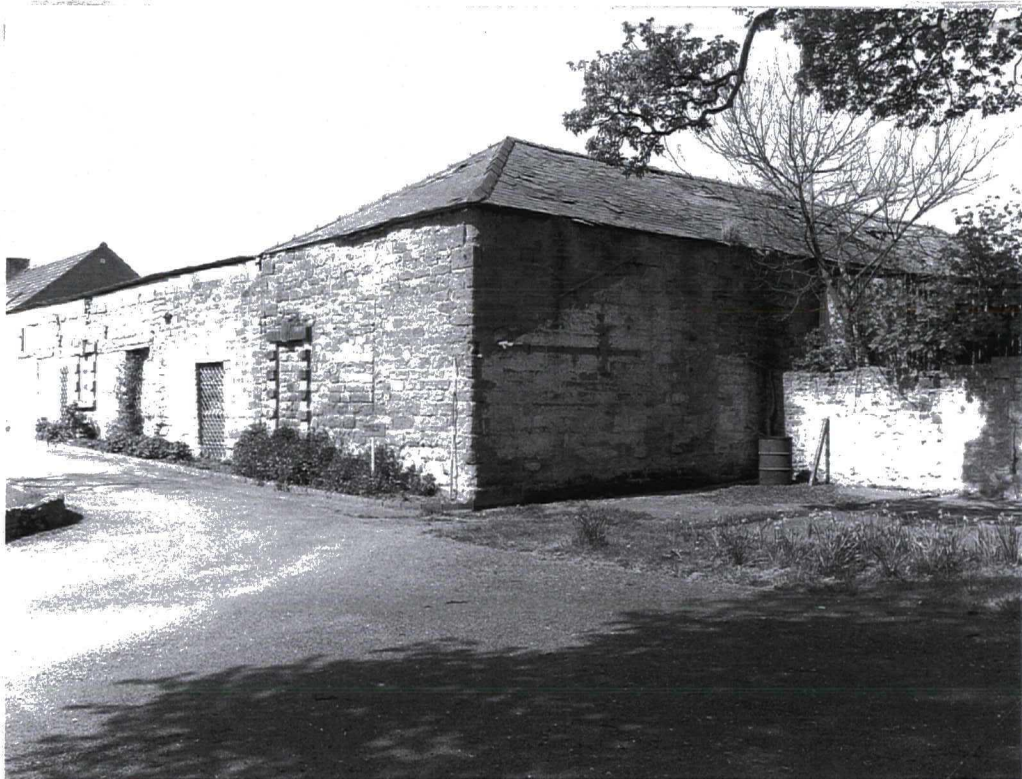


Plate 8: South-east corner of barn (Building 8), looking north-west (photo 4/14)



Plate 9: Interior of barn (Building 8), looking south (photo 5/7)



Plate 10: Interior of stables (Building 9), looking west (photo 5/12)



Plate 11: South elevations of barn and stables (Buildings 8 & 9), looking north-west



Plate 12: South elevations of Buildings 11 & 12, looking north-west

TOP

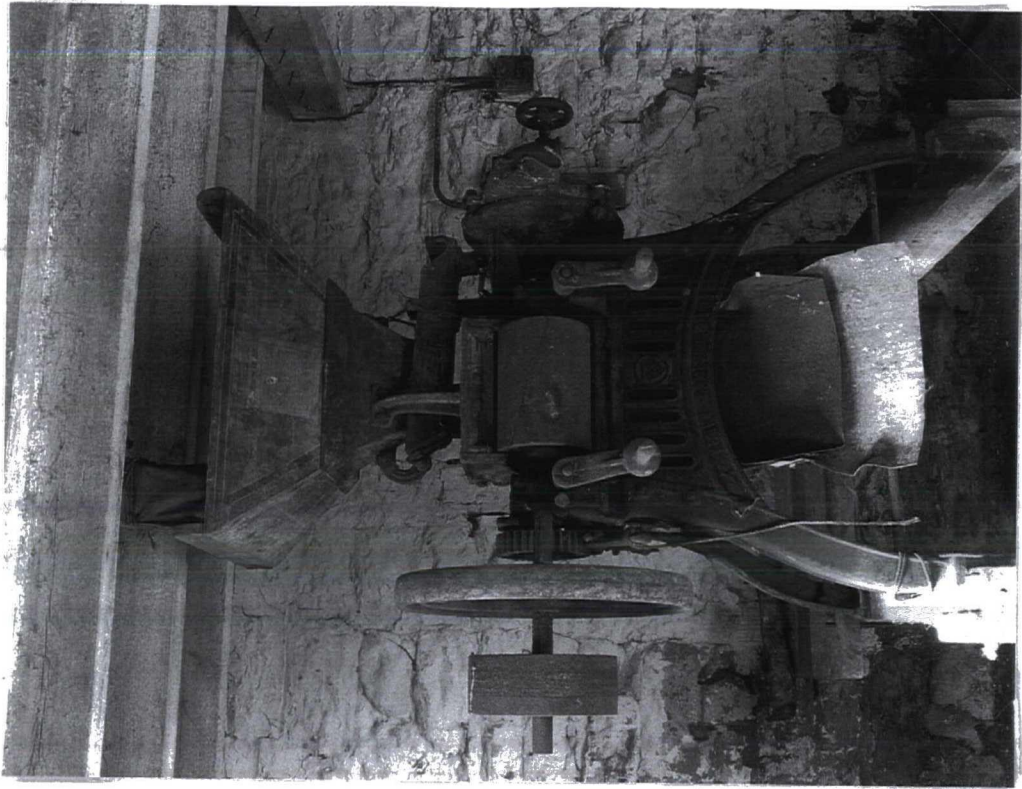


Plate 13: Roller mill in Building 11, looking west (photo 3/7)



Plate 14: Typical roof truss in Building 11, looking east (photo 3/17)

APPENDIX 1

APPENDIX 1: PHOTOGRAPHIC REGISTER

Films 3 to 6: Medium format black and white prints taken 25th April 2002

Film 7: 35mm colour prints taken 25th April 2002

Film	Frame	Subject	Scale
3	1	Interior of Building 5, looking N	2m
3	2	E elevation of Building 5, looking NW	2m
3	4	E elevation of Building 5, looking W	2m
3	5	Vented window in Building 10	2m
3	6	Roller mill in Building 11, looking W	2m
3	7	Detail of roller mill in Building 11, looking W	-
3	9	Hopper of roller mill in Building 11, looking W	-
3	10	S elevation of Buildings 10 to 12, looking NE	2m
3	11	N elevation of Buildings 10 to 12, looking SE	2m
3	12	W gable of Building 12, looking E	2m
3	14	N elevation of Building 10, looking SE	2m
3	15	N elevation of Building 11, looking S	2m
3	16	N elevation of Building 10, looking SW	2m
3	17	Typical roof truss, 1F of Building 11, looking E	-
3	18	Typical roof truss, Building 12, looking W	2m
4	1	S elevation of Building 11, looking N	2m
4	3	1F vent in S elevation of Building 11, looking NE	-
4	4	S elevation of Building 10, looking N	2m
4	5	Building 13 following demolition, looking W	2m
4	6	Lean-to on W side of Building 8, looking E	2m
4	7	N elevation of Building 9, looking SE	2m
4	9	Interior of Building 10, looking W	2m
4	10	Interior of Building 10, looking E	2m
4	11	S elevation of Building 8, looking N	2m
4	12	S elevation of Buildings 8 and 9, looking NE	2m
4	14	S elevation of Buildings 8 and 9, looking NW	2m
4	15	E elevation of Building 8, looking W	2m
4	16	E elevation of Building 8, looking SW	2m
4	17	N elevation of Building 8, looking S	2m
4	18	E gable of Building 10, looking W	2m

Film	Frame	Subject	Scale
5	1	W elevation of Building 8, looking SE	2m
5	3	Detail of doorway Gibbs surround in W elevation of Building 8, looking E	2m
5	4	Detail of doorway Gibbs surround in W elevation of Building 8, looking E	2m
5	5	Space between S end of Buildings 8 and 9, looking S	2m
5	6	Interior of Building 8, looking N	2m
5	7	Interior of Building 8, looking S	2m
5	9	Latch to stable doors, Building 8	-
5	10	Detail of stable doors, Building 8	-
5	11	Typical window in N elevation of Building 9, looking S	2m
5	12	Interior of Building 9, looking W	2m
5	13	Interior of Building 9, looking E	2m
5	15	Typical stall, Building 9, looking S	1m
5	16	Typical stall partitions, Building 9, looking SW	1m
5	17	W elevation of Building 5, looking E	2m
5	18	S elevation of Building 7 (part A), looking N	2m
6	1	S elevation of Building 7 (part A), looking NE	2m
6	3	W elevation of Building 7 (parts A & B), looking E	2m
6	4	Building 7 from NW, looking SE	2m
6	5	E elevation of Building 7 (parts C & A), looking SW	2m
6	6	E elevation of Building 7 (parts A & C), looking NW	2m
6	7	E gable of Building 2, looking W	2m
6	9	W gable of Building 2, looking E	2m
6	10	High Farm complex from NW, looking SE	2m
6	11	High Farm complex from NW, looking SE	2m
6	12	Blocked gateway in Building 3, looking S	2 x 1m
6	14	Sliding sash window, Building 7 (part B), looking S	1m
6	15	Sash window, Building 7 (part A), north elevation, looking N	-
7	17	South gable of Building 8, looking N	2m
7	18	South elevations of Buildings 8 and 9, looking NW	2m
7	19	Throxenby Hall (main, east elevation), looking W	-
7	20	South gable of Building 8, looking NW	2m
7	21	South elevations of Buildings 8 and 9, looking NW	2m