

PHOTOGRAPHIC RECORD

Bassett House, Southampton: Elevations

1M - 17M (MAIN HOUSE)

1N - 7N (NORTH WING)

Bassett House, Southampton: General views



General views - from south-east (top) and south-west (bottom)

Bassett House, Southampton: Elevations: 1M
MAIN HOUSE



East Elevation of House
Top - from north-east
Bottom - from south-east

Bassett House, Southampton: Elevations: 2M



East Elevation of Entrance Front
(details to follow)

Bassett House, Southampton: Elevations: 3M



East Elevation - Entrance Front - Details
Ground Floor

Top left - window to small Kitchen - formerly Porch
(note stone entrance step at bottom course from vent pipe to gully)
Top right - 1950's entrance door and screen- replacing former window to Hall
Bottom - two windows at north end - left window pre-1950, right window post-1950

Bassett House, Southampton: Elevations: 4M



East Elevation - Entrance Front - First Floor - Details
Northwards sequence from top left to bottom right
Continued next page

Bassett House, Southampton: Elevations - 5M



East Elevation - Entrance Elevation - First Floor - Details
Continued from sequence on previous page

Bassett House, Southampton: Elevations - 6M



South end of East Elevation with South return
Top left - east elevation - window certainly pre-1950,
probably C19

Top right - door at ground floor probably only round arch in
original position, formerly window

Bottom left - detail of window, raised pre 1950, at first floor
Bottom right - detail of probably original arch

Bassett House, Southampton: Elevations - 7M



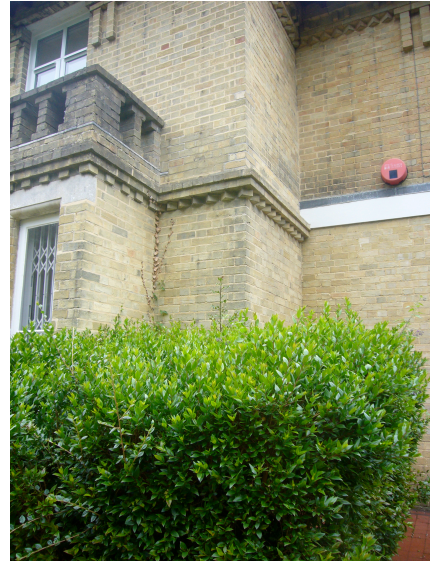
South elevation of 'main block' of house
South-east Balcony structure missing - removed
post-1966?

Bassett House, Southampton: Elevations - 8M



Left - bay window (probably structure later than 1855-65)
Right - first floor french window without balcony

Bassett House, Southampton: Elevations - 9M



Details of bay to South Elevation ('main block') and former Balcony support wall

Bassett House, Southampton: Elevations - 10M



West Elevation of 'main block 'and South Elevation of
'west wing" from south-west

Bassett House, Southampton: Elevations - 11M



West Elevation of 'main block' of House
(details to follow)

Bassett House, Southampton: Elevations - 12M



Details of West Elevation of 'main block'
Top - ground floor windows - left hand window right of bay
inserted c 1950; first floor - first two windows to right of bay
inserted c 1950
Bottom left - window to left of bay inserted c. 1950; bay
(with timber dentil details and pebble-dash finished
spandrel) inserted pre-1950

Bassett House, Southampton: Elevations - 13M



South Elevation of 'west wing'

First floor brickwork almost totally rebuilt (except 1.5 to 2m at extreme western end) - possibly in 1950's alterations (thickening of wall shown on 1947 plans no longer existing)

Bay - similar to bay to south Elevation of 'main block' - added pre-1950; west window at first floor added c.1950, other window added pre-1950

(Note - no dentilled cornice or brackets)

Bassett House, Southampton: Elevations - 14M



Detail of bay to South Elevation of 'west wing'
(Note absence of dog-tooth detailing)

Bassett House, Southampton: Elevations - 15M



West Elevation of 'west wing'

Top left - from south-west

Top right - from north-west

Bottom detail of french doors and top light breaking through
dog-tooth string course - note short brackets - inserted
pre-1950

First floor window may be c.1865, cp. with window on north
elevation of 'west wing'

Bassett House, Southampton: Elevations - 16M



North Elevation of 'west wing'

First floor windows - left hand window - widened in c. 1950;
right hand window almost certainly from c.1865
construction of 'west wing'

Note marked brickwork towards right - location of former
Boiler House - also covers to coal chute and former cellar
entrance (see 1947 plans)

Bassett House, Southampton: Elevations - 17M



Top: North elevation of
Main House
Bottom: North elevation
of former Cloakroom
(now Office 14 - see Main
House Photographic
Record) showing two
bricked-up windows

**Bassett House, Southampton: Elevations - 1N
NORTH WING**



West Elevation of 'north wing'
Constructed after (c. 1865) 'west wing' - probably later
C19

Top - south section
Bottom north section with added former WC
accommodation at north end

Bassett House, Southampton: Elevations - 2N



North Elevation of former WC accommodation and north entrance door to 'north wing'
Note 'mouchette' brackets (timber) to canopy and leaded lights - later C19 detailing

Bassett House, Southampton: Elevations - 3N



North Elevation to 'mews block' section of 'north wing'
Much altered c. 1950 - roof jacked up 600mm, garage
doorway and doors and entrance door and windows
inserted, all windows at first floor inserted

Bassett House, Southampton: Elevations - 4N



Windows to North Elevation of 'mews block' of 'north wing'

Top - typical window inserted at first floor C. 1950

Bottom - segmental arched window at ground floor level -
probably original to building (later C19?)

Bassett House, Southampton: Elevations - 5N



East Elevation - 'mews block' - 'north wing'
Garage doors - pre-1950 but into double garage - divided in
c1950 alterations
First floor window inserted c. 1950

Bassett House, Southampton: Elevations - 6N



South Elevation of 'mews block' and Yard Wall
Top - South Elevation of 'mews block' of 'north wing' -
ground floor window pre-1950;
first floor windows inserted c.1950
Bottom - Yard Wall - differing positions shown on historic
OS sheets

Bassett House, Southampton: Elevations - 7N



Top - South Elevation of 'mews block' of 'north wing'
Ground floor window (right hand window - bottom left)
inserted c.1950 in place of former doorway; window further
to right bricked up c.1950; first floor windows inserted c.
1950

Bottom left - left hand window pre-1950, right hand window
c. 1950

Bottom right - detail of Yard door