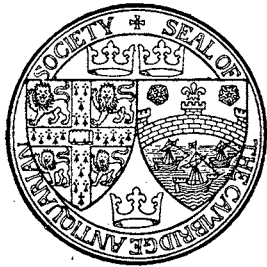


PROCEEDINGS  
OF THE  
**Cambridge Antiquarian Society,**

OCTOBER 1933—OCTOBER 1934



VOLUME XXXV

Edited by E. A. B. BARNARD, M.A., F.S.A., F.R.Hist.S.



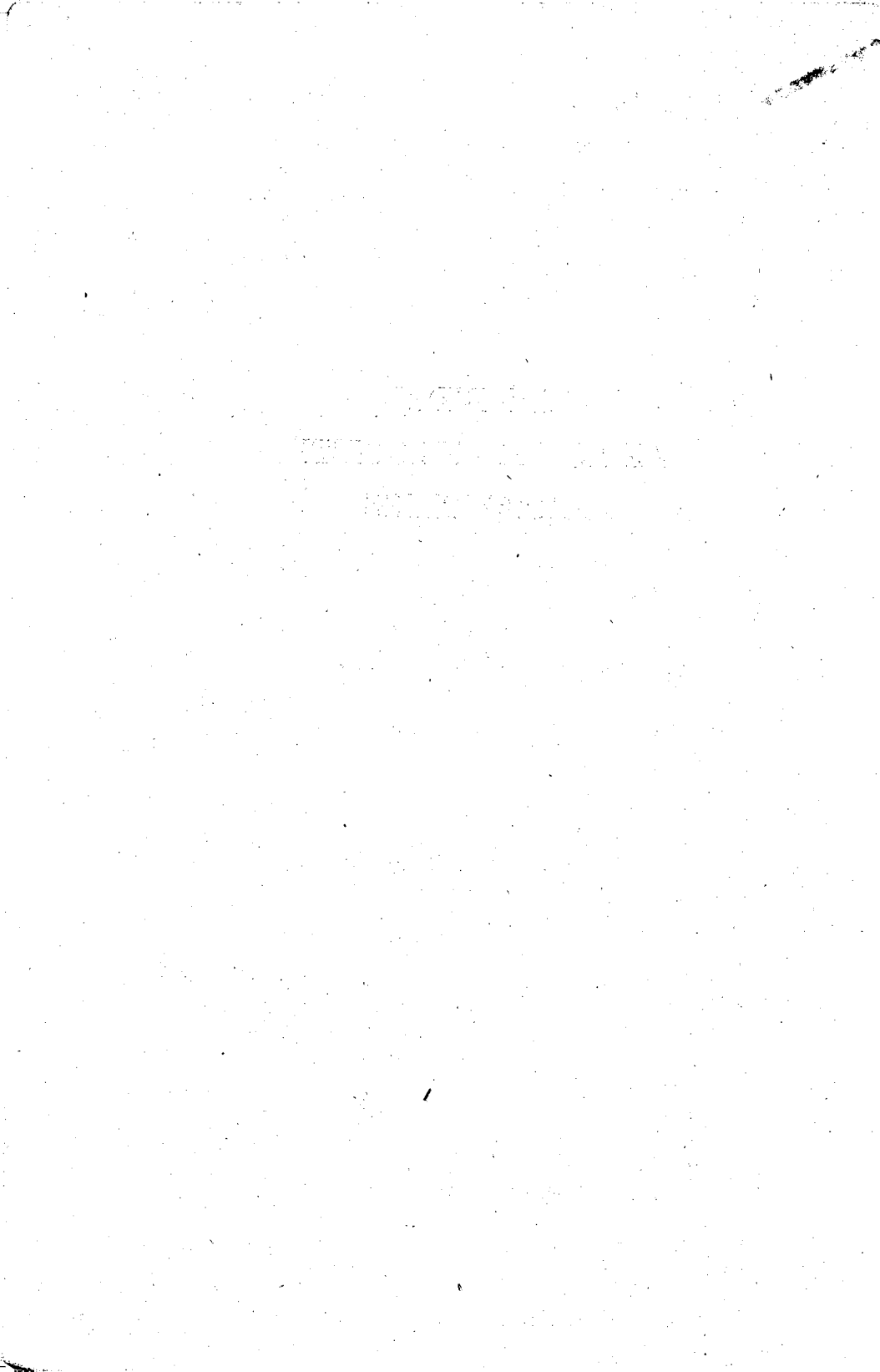
**Cambridge:**

Published for the Cambridge Antiquarian Society  
By BOWES & BOWES.

1935

*Price Twenty-five Shillings net*

CAMBRIDGE  
ANTIQUARIAN SOCIETY  
PROCEEDINGS



PROCEEDINGS  
OF THE  
**Cambridge Antiquarian Society**

OCTOBER 1933—OCTOBER 1934



VOL. XXXV

Edited by E. A. B. BARNARD, M.A., F.S.A., F.R.Hist.S.

CAMBRIDGE

PUBLISHED FOR THE CAMBRIDGE ANTIQUARIAN SOCIETY

BY BOWES & BOWES

1935

PRINTED IN GREAT BRITAIN

## CONTENTS

	PAGE
List of Presidents . . . . .	xi
List of Members of the Society . . . . .	xiii
Report of the Council and Summary of Accounts for 1934 . . . . .	xxv
The Foliage, Flowers and Fruit of Southwell Chapter House. By A. C. SEWARD, Sc.D., LL.D., F.R.S. . . . .	1
The Origin of the Borough of Cambridge: a Consideration of Pro- fessor Carl Stephenson's Theories. By Miss H. M. CAM, M.A. . . . .	33
The Faculty Books of the Diocese of Ely, 1724-1875. By W. M. PALMER, M.D., F.S.A. . . . .	54
Investigation of the Ancient Causeway in the Fen between Fordy and Little Thetford, Cambridgeshire. By T. C. LETHBRIDGE, B.A., F.S.A. . . . .	86
The Car Dyke, the Cambridgeshire Ditches, and the Anglo-Saxons. By T. C. LETHBRIDGE, B.A., F.S.A. . . . .	90
Ancient Lime-kilns at Great Paxton, Hunts., their relation to the Anglo-Saxon Church at Great Paxton, and a Tentative Scheme for dating Pottery of the Late Saxon Period. By T. C. LETH- BRIDGE, B.A., F.S.A., and C. F. TEBBUTT. . . . .	97
Report on the Excavation of Two Sites in Mildenhall Fen. By C. S. LEAF, B.A., F.S.A., with note by T. C. LETHBRIDGE, B.A., F.S.A. . . . .	106
Cambridgeshire Inclosure Documents in the University Library. By B. F. C. ATKINSON, Ph.D. . . . .	128
Hoard of Roman Coins from Linwood Farm, March. By L. C. G. CLARKE, M.A., F.S.A. . . . .	130
John Warkworth (c. 1425-1500) and his Chapel in St Mary's-the- Less, Cambridge. By E. A. B. BARNARD, M.A., F.S.A., F.R.Hist.S. . . . .	131
Recent Demolitions on Peas Hill, Cambridge. . . . .	136
A Clay Lamp of the First Century A.D. in the Museum of Archaeology and Ethnology, Cambridge. By DR PHIL. FRITZ HEICHELHEIM . . . . .	139
Archaeological Notes. By T. C. LETHBRIDGE, B.A., F.S.A., M. O'REILLY, B.A., and C. S. LEAF, B.A., F.S.A. . . . .	141
Index . . . . .	147



## LIST OF ILLUSTRATIONS

<i>Foliage, Flowers and Fruit of Southwell Chapter House:</i>	PAGE
Diagrammatic plan . . . . .	4
"    "    . . . . .	5
Chapter House . . . . .	6
"    "    Capitals . . . . .	facing 8
"    "    Capital 5 . . . . .	" 23
"    "    Capitals 9 and 22 . . . . .	" 27
<i>Origin of the Borough of Cambridge:</i>	
Map . . . . .	40
"    . . . . .	42
<i>Faculty Books of the Diocese of Ely:</i>	
Plan of Foxton Church . . . . .	56
"    "    . . . . .	57
<i>Ancient Causeway in the Fen:</i>	
Site of chapel . . . . .	facing 86
Section of causeway, etc. . . . .	88
<i>Car Dyke, Cambridgeshire Ditches:</i>	
Plan . . . . .	91
Anglo-Saxon swords from Waterbeach . . . . .	facing 93
<i>Ancient Lime-kilns at Great Paxton:</i>	
Views of the site . . . . .	facing 97
Plan . . . . .	98
Small objects . . . . .	99
Potsherds . . . . .	102
"    Meldreth . . . . .	103
Rim sections, St Neots . . . . .	104
<i>Two Sites in Mildenhall Fen:</i>	
Plan . . . . .	107
Neolithic bowl . . . . .	facing 108
Plan . . . . .	109
Potsherds, Hayland House . . . . .	110
Flint implements, Hayland House . . . . .	112
"    "    "    "    . . . . .	113



	PAGE
<i>Two Sites in Mildenhall Fen (cont.):</i>	
Potsherds, etc. . . . .	116
Beaker, Fifty Farm . . . . .	facing 118
Flint scrapers, Fifty Farm . . . . .	120
implements ,, . . . . .	121
Beaker fragments, Fifty Farm . . . . .	123
Potsherds, etc.   "   " . . . . .	124
"Thumb-nail" ware, Fifty Farm . . . . .	facing 126
<i>John Warkworth (c. 1425-1500) and his Chapel:</i>	
The Peterhouse portrait; the excavation in August, 1926 . . . . .	facing 134
<i>A Clay Lamp of the First Century A.D.:</i>	
Front view; back view . . . . .	facing 140
<i>Archaeological Notes:</i>	
Objects in the Griffith collection (Plates I-VIII, and Plate XI) facing 146	
Beaker, etc.: Little Downham (Plates IX and X) . . . . .	,, 146

## INDEX

- Abington, Little, 81  
 Addey, John, 64  
 Alcock, John, Bishop of Ely, 133  
 Alderson, John, 67  
 Alianor, Queen, 3  
*Ancient Lime-kilns at Great Paxton*,  
 by T. C. Lethbridge and C. F.  
 Tebbutt, 97-105  
 Anderson, Miss M. D., 31  
 Ansty, Christopher, 61  
*Archaeological Notes*, by T. C. Leth-  
 bridge, M. O'Reilly and C. S.  
 Leaf, 141-6  
 Archer, Thomas, 62  
 Arms:  
   Castile, 2  
   Southwell Diocese, 1  
 Ashley, 71  
 Askham, Dingley, 62, 63  
 Aston, Christopher, 77  
 Atkinson, B. F. C., *Cambridgeshire*  
*Inclosure Documents in the*  
*University Library*, 128-9  
   T. D., 36, 45, 51  
 Attenborough, F. L., 30, 32  
 Auger, Thomas, 77  
 Austin, Thomas, 61  
 Aylesbury, 96
- Babington, C. C., 33, 36  
 Babraham, 68, 72  
 Bagge, Charles, 59, 64  
 Balsham, 71  
 Barnard, E. A. B., *John Warkworth*  
*(c. 1425-1500) and his Chapel in*  
*St Mary's-the-Less, Cambridge*,  
 131-5, 80  
 Barrington, 69, 141, 143, 144  
 Barton, 81, 128  
 Barway, 86  
 Barwell, John, 62  
 Bassingbourn, 60, 128  
 Bede, Venerable, 37  
 Bedford, 80  
 Bellamy, John, 63  
 Bendish, Richard, 69  
 Berrier, Thomas, 67  
 Beverley Minster, 2, 22, 26  
 Bond, F., 31  
 Bottisham, 71, 81, 128  
 Bourn, 71, 81  
 Bowtell, J., 37  
 Boyden, Mr, 61  
 Braham Dock, 86  
 Bran Ditch, 90, 91, 94, 95  
 Bridge, Robert, 78  
 Brinkley, 61, 71, 81  
 Bristol, 35  
   Cathedral, 8  
 Brooke, Zachariah, 66  
 Brown, Baldwin, 41  
   Charles, 108*n.*, 116  
 Buck, Walter, 86, 89  
 Bull, Henry, 61  
 Bullock, J. H., 80  
 Burwell, 71, 81, 128, 129  
 Bushe-Fox, J. P., 100
- Cam, Miss H. M., *Origin of the Borough*  
*of Cambridge*, 32-53  
 Cam, River, 37, 38, 90, 92, 93  
 Cambridge, 35, 36, 37, 92, 93, 95  
   Anglo-Saxon, 37, 52  
   Archaeology and Ethnology Museum  
   of, 52*n.*, 87, 108, 130, 139, 141-6  
 Armeswerk, 39, 46  
 Barnwell, 38, 43, 128  
   Gate, 51  
 Bells, 55  
 Botany School, 30  
 Bridge, 38, 41  
   Street, 37  
 Bridgeward, 46  
 Castle, 37, 39, 45, 46  
   End, 44  
   Hill, 36, 37, 38, 45, 46, 47, 49  
 Cemeteries, Early, 38, 41  
 Chesterton, 128  
   Lane, 44  
 Christ's College, 51, 52  
 Churches:  
   All Saints, 39, 44, 61, 71, 81  
   St Andrew, Chesterton, 55  
   St Andrew the Great, 39, 43, 44,  
   62, 63, 71, 75, 81  
   St Benet, 41, 44, 53, 62, 81  
   St Botolph, 43, 44, 50, 81  
   St Clement, 43, 44, 46, 61, 82  
   St Edward, 43, 44, 66, 67, 69, 82  
   Parishioners, 68  
   St George, 43, 44  
   St Giles, 44, 70, 82, 128  
   Holy Trinity, 39, 61, 70, 81  
   St Mary the Great, 63, 66, 67, 69,  
   76, 79, 82, 133  
   St Mary the Less, 44, 63, 131-5  
   St Michael, 55, 66, 70, 75, 76  
   St Paul, 82

- Cambridge, Churches (*cont.*): St Peter  
(St Mary the Less), 44, 47, 50, 132  
St Sepulchre, 37, 38, 43, 61, 82  
Clare Hall, 66  
Custom, 44  
Danish occupation, 43  
Decuman gate, 37  
Domesday Borough, 35, 36, 45, 46  
Dues, 47, 48  
Early trade, 41  
Emmanuel College, 63  
Excavations, 51, 52  
Fitzwilliam Museum, 28, 30  
Granta, 37, 39  
Grantchester, 37  
Grantebrigg, 37, 41, 46  
Hills Road, 37  
Histon Road, 37  
Hobson St., 51  
Holm, 43  
Hunnybun's, 51, 52  
Huntingdon Road, 37  
Jesus College, 50, 70  
Green, 51  
Lane, 38  
King's College, 137  
Ditches, 35, 39, 49, 50, 51, 101  
Parade, 38  
Magdalene College, 37, 39  
Maps, 41, 49  
Market Hill, 38, 49, 52  
Mill Lane (Milne Lane), 47, 51, 52  
Pool, 51  
Mills, 46, 47  
Mint, 43  
Moots, 41  
Newnham Croft, 38, 143  
Open Fields, 44  
Origin, 38, 39, 44, 53  
Parishes, 48, 49, 51  
Peas Hill, 38  
Peterhouse (St Peter's College), 63,  
131, 132, 133, 134  
Pottery, 51, 52*n.*  
Queens' College, 46  
Ridley Hall, 38  
River, 37, 39, 41  
Roman, 37, 44  
Road, 37, 38  
Romano-British, 38  
Rose Crescent, 38  
St Andrew's St., 52  
St Edward's Passage, 137  
St John's College, 38  
Ditch, 44  
Hospital, 44  
St Radegund, 39, 50  
Shoemaker Row, 63  
Silver St., 51  
Survey of 1279, 48
- Cambridge, Tennis Court Road, 52*n.*  
Town Ditches, 41  
Trinity Hall, 76  
Trumpington Gate, 44, 132  
Union Society, 38  
Watercourses, 39, 51  
*Cambridge, Origin of the Borough of,*  
by Miss H. M. Cam, 33-53  
*Cambridge, Recent Demolitions on Peas  
Hill,* 136-8  
Cambridgeshire, Church Bells, 64, 65,  
75, 76, 77  
*Cambridgeshire Inclosure Documents  
in the University Library,* by  
B. F. C. Atkinson, 128-9  
Cardell, H., 97  
*Car Dyke, the Cambridgeshire Ditches,  
and the Anglo-Saxons,* by T. C.  
Lethbridge, 90-6  
Carlton, 82  
Carr, J. W., 31  
Castile, Castle of, 2  
Castle Camps, 70  
Cave, C. J. P., 2, 30, 31  
Cavendish, James, 63  
Caxton, 71, 82  
Chatteris, 67, 69, 82  
Cherryhinton, 61, 82  
Cheveley, 71, 82  
Chippenham, co. Cambridge, 145  
Clark, Grahame, 145  
J. W., 33, 51, 133  
Clarke, L. C. G., *Hoard of Roman Coins  
from Linwood Farm, March,*  
130  
T. H., 7, 31  
*Clay Lamp of the First Century A.D.,*  
by Dr Heichelheim, 139-40  
Coates, 83  
Cockerell, Sir Sydney, 22  
Colborn, Thomas, 64  
Cole, William, 69, 79  
Colling, J. K., 9, 28, 31  
Colville Family, 71  
Comberton, 77, 128  
Conder, Alderman J. S., 95  
Conington, 58, 60, 62, 63, 128  
Conybeare, W. J., 21, 22, 27, 30, 31  
Copenhagen Museum, 101  
Cornish and Gaymer, 21  
Cottenham, 61, 70, 77, 78, 128, 132  
Cotton, John, 72, 73, 74  
Sir John, 72  
Sir J. H., 65  
Coulton, Dr G. G., 8, 31  
Coveney, 83  
Cox, J. C., 30, 31, 32  
Crete, 8  
Crusaders, 27  
Custance, William, 61

- Danes, the, 35  
 Davyes, Richard, 72, 73, 74  
     Robert, 74  
 Devil's Ditch, 90, 95  
 Dimock, A., 7, 31  
 Docwra, Abel, 60  
 Domesday, 35  
 Downham, Little, 144, 145  
 Dry Drayton, 62, 67, 72  
 Duport, Dr, 75  
 Durham, 132  
 Duxford St Peter, 82
- Eadwig, King, 1  
 East Hatley, 71, 83  
 Eden, Charles, 76  
     Thomas, 76, 78  
 Edward I, 2; 27.  
     IV, 132  
 Edward the Confessor, 43  
 Edward the Martyr, 43  
 Egbert, D. D., 28, 31  
 Ellis, G. H., 79  
 Elm, Tithe Barn, 60, 70  
 Elsworth, 65, 82  
 Eltisley, 65  
 Ely, Abbot, 46  
     Bell Inn, 78  
     Bishops, 43, 58, 63, 65; 76, 78, 80,  
         132, 133, 135  
     Bishop's Advisory Committee, 80  
         Muniment Room, 54, 58, 60, 75,  
         79  
     Cathedral, 31, 75  
     Chancellor, 75  
     Consistory Court Registers, etc.,  
         55; 58  
     Dean, 75  
     Dean and Chapter, 75  
     *Episcopal Records*, 54  
     Faculty Books, 54-80  
     Holy Trinity, 70, 83  
     Inquest, 46  
     Isle, 86, 87  
     Monastery, 43, 46, 47  
     Parishioners, 61  
     St Mary's, 61, 83  
     Vicar General, 76, 78  
*Ely, Faculty Books of the Diocese of,*  
     1724-1875, by W. M. Palmer,  
     54-85  
 Emneth, 71  
 Eraclius, 21  
 Etheldreda, St, 37, 39, 133  
 Evans, Joan, 8, 31  
 Eversden, Great and Little, 128  
 Exeter Cathedral, 25
- Fen Ditton, 71, 83  
     Stanton, 77  
 Fleam Ditch, 90, 95, 96  
 Fordham, 71, 83, 128, 129  
 Fordy, 86, 89  
 "Seven Stars," 86, 87, 88  
 Foster, W. K., 141  
 Fowler, Major, 86, 90, 92  
 Fox, C. F., 33, 37, 38, 41, 52, 92, 95,  
     97, 114, 142, 143  
 Foxton, 56-7, 83  
 Freeman, E. A., 36  
 Frohock, Thomas, 67  
 Fulbourn, 67, 128, 146  
 Fuller, Robert, 62
- Gairdner, John, 132  
 Gamlingay, 72, 83  
 Gardner, A., 30, 32  
     John, 67  
     Samuel, 10, 11, 31  
 Gibbons, A., 54  
 Gibson, John, 66  
 Gillam, Mr, 68  
 Girton, 76, 77, 94, 128, 143, 144  
 Glastonbury, 25  
 Gloucester Cathedral, 2, 31  
 Godolphin, Francis, Earl of, 65  
 Gooch, Sir Thomas, 58  
 Gransden, Little, 62, 71, 83, 128  
 Granta, River, 90, 92  
 Graveley, 62, 65, 70  
 Gray, Arthur, 33, 36, 37, 38, 39, 41,  
     47, 49  
     Walter de, 2  
 Green, Edward, 68  
 Grey, William, Bishop of Ely, 132, 134  
 Griffith, A. F., 141  
     Collection, 141-4  
 Guilden Morden, 128, 139, 140  
 Gyrwas, 94
- Hackney, co. Middlesex, 72  
 Haddenham, 71, 84, 129  
 Hallifax, S., 68  
 Hammond, Thomas, 68  
 Hankey, Rev. C. P., 131  
 Hardwick, 128  
 Hardwicke, Baron, 59, 66,  
     MSS., 65  
 Hardy, Daniel, 61  
 Harrimere drain, 86  
 Harston, 70, 128  
 Haslingfield, 71  
 Hauxton, 128  
 Headly, Henry, 61  
 Heichelheim, Dr, *A Clay Lamp of the*  
     *First Century A.D.*, 139-40  
 Henry I, 1  
     II, 1

- Henry III, 27, 50  
 Heraclius, 21  
 Hereby, 89  
 Herriby, 86  
 Hetherington, William, 62  
 Higgins, Thomas, 63  
 Hills, Dr, 75  
 Histon, 62, 71, 84  
*Hoard of Roman Coins from Linwood Farm, March*, by L. C. G. Clarke, 130  
 Holland, Mrs, 62  
 Holy Land, 27  
 Holywell Row, 142, 143  
 Horseheath, 71, 84  
 Howes, John, 76  
 Huddleston Documents, 55  
 Sir Edmund, 72, 73, 74  
 Family, 73  
 Hughes, T. McK., 33, 38, 51, 97, 101, 105  
 Humbletoft, John, 76  
 Huntingford, Mr, 95, 96  
 Hutton, John, 72, 73, 74  
 Hynde, Sir Francis, 72, 73  
  
 Ickleton, 66, 70, 128, 129  
 Icknield Way, 96  
 Ile de France, 29  
*Investigation of the Ancient Causeway in the Fen between Fordy and Little Thetford, Cambridgeshire*, by T. C. Lethbridge, 86-9  
 Ipswich, 43  
  
 Jackson, Sir T. G., 3, 25, 30  
 James, Carrington, 66  
 W. A., 2n.  
 Jenyns, R., 63  
 Soame, 63  
 John, King, 47  
  
 Kendrick, T. D., 142  
 Keynes, Mrs Alderman, 136  
 Killpack, W. B., 7, 31  
 Kilner, George, 64  
 King's Lynn, 64, 93  
 Kingston, 128  
 Knapwell, 69, 71  
 Knight, Samuel, 69  
 Knuts Delf, 92  
  
 Lachlan, Robert, 131, 135  
 Lamb, John, 69  
 Lambin, E., 32  
 Landbeach, 84, 128  
 Tithe Barn, 60  
 Landwade, 72  
 Lane, Thomas, 132  
 Lark, River, 92, 93, 95, 106, 117  
  
 Leach, A. F., 5, 32  
 Leaf, C. S., 125, 126, 127, 140-6  
 Leaf, C. S., *Report on the Excavation of Two Sites in Mildenhall Fen*, 106-25  
 Note by T. C. Lethbridge, 125-7  
 Leheup, Peter, 65  
 Lethaby, W. R., 29, 32  
 Lethbridge, T. C., 122, 125-7, 140-6  
 Lethbridge, T. C., *Investigation of the Ancient Causeway between Fordy and Little Thetford*, 86-9  
*The Car Dyke, the Cambridgeshire Ditches, and the Anglo-Saxons*, 90-6  
 and C. F. Tebbutt, *Ancient Limekilns at Great Paxton*, 97-105  
 Leverington, 60, 67, 132  
 Lillie, Rev. W. W., 22  
 Lincoln, 35, 36, 92  
 Ling, Mr, 77  
 Linton, 71, 79, 80, 128  
 Lisle, Denis, 58, 60  
 Little, Rev. W. W., 32  
 Littleport, 71, 84, 90, 92  
 Livett, G. M., 32  
 Lloyd, A. H., 30, 136  
 Lolworth, 61, 84  
 Lombe, Margaret, 69  
 Thomas, 69  
 London, British Museum, 130, 139, 140  
 Bishop of, 66  
 Somerset House, 134  
 Westminster Abbey, 3, 22, 32  
 Long Stanton, All Saints, 77, 128  
 Longstow, 71, 128  
 Longton, Mr, 30  
 Loomes, James, 68  
 Lord, Simon, 66  
 Lorkyn, Thomas, 55  
 Lucas, Charles, 93  
 Lyon, T. H., 135  
  
 Madingley, 65, 73  
 Maitland, F. W., 33, 36, 41, 44, 47, 48, 49  
 Manchell, John, 72, 73, 74  
 Ursula, 74  
 Manea, 71  
 Mansfield, Quarries, 7  
 March, 68, 70, 71, 84, 130  
 Martin, James, 63  
 May Day customs, 25, 32  
 McMiken, Mr, 30  
 Melbourn, 71, 84  
 Meldreth, Flambard's Manor, 101, 103  
 Mepal, 69, 84  
 Merrifield, Mrs, 21

- Mildenhall Fen, Report on the Excavation of Two Sites in*, by C. S. Leaf, 106-25  
 Note by T. C. Lethbridge, 125-7  
 Mildenhall, Beacon Hill, 114  
 Cook's Drove, 106  
 Fifty Farm, 117, 120, 121, 123, 124, 126  
 Hayland Drove, 106  
 House, 106, 110, 112, 113, 116  
 Isleham Sluice, 106  
 Milton, 68  
 Moore, C. H., 2, 32  
 Morley, Mr, 146  
 Musgrave, Ellis, 61  
 James, 62  
 Mutlow Hill, 96  
 Negus, G., 65  
 Newmarket, 71, 84  
 Newton in the Isle, 71, 84, 128, 129  
 Colville Chapel, 71  
 New York, 28  
 Northampton, 35  
 North Walsham, 21  
 Norwich, 35, 36, 43, 64  
 Nottingham, 35  
 Archdeacon of, 1  
 Nuce, Mr, 75  
 Nuthall, Thomas, 68  
 Nutting, Thomas, 59, 61  
 Oakington, 94, 128  
 Offa, 37, 39  
 O'Reilly, Miss, 52, 140-6  
 Orlingbury, 63  
 Ormesby Psalter, 22  
 Orton, Thomas, 70  
 Orwell, 128  
 Oskytel, Archbishop of York, 1  
 Ouse, Little, 87, 90, 92, 93, 95, 146  
 Oxford, 132  
 Merton College, 132  
 Palavicini, 72  
 Palmer, W. M., 39, 46, 101  
*Faculty Books of the Diocese of Ely*, 1724-1875, by W. M. Palmer, 54-85  
 Papworth Agnes, 64  
 Everard, 65  
 Parson Drove, 67  
 Pattiswick, co. Essex, 73  
 Paxton, Great, 80, 84, 97-105  
 Peach, Samuel, 69  
 Peachey, Mr, 106, 117  
 Peck, Wharton, 64  
 Peterborough wares, 122  
 Phelps, Charles, 64  
 Picot, 46, 47  
 Pigg, Thomas, 64  
 Pigott, Stuart, 108  
 Pirenne, —, 34, 43  
 Pottery, early, 51, 52, 87, 90, 91, 92, 96, 97-105, 108-14, 122  
 Preston, J. P., 87  
 Pretlove, Alderman, 63  
 Princeton University, 28  
 Prior, E. S., 30, 32, 79  
 Provence, 27  
 Eleanor of, 27  
 Provins, 27  
 Rampton, 128  
 Ramsey Abbey, 28  
 Randall, Mr, 86, 87  
 Rastall, W. D., 7, 32  
 Reach Lode, Old, 93, 95  
 Redwald, 39  
 Retrospectors' Club, 89, 97  
 Richard I, 1  
 III, 47  
 Richardson, Dr, 63  
 Richborough, 100  
 Richmond, Surrey, 63  
 Ripon Cathedral, 2  
 Robertson, Miss Anne, 130  
 Rocliff, John, 132  
 Romaine, Archbishop John de, 3  
 Roman coins found at March, 130  
 Royston, 95  
 St Ives, 77  
 St Neots, 97, 101, 104  
 Saltmarsh, John, 137, 138  
 Sandes, Sir Miles, 78  
 Saunderson, Professor, 63  
 Sawston, 128  
 Church, 55, 72  
 Hall, 72  
 Huntington's manor, 72, 73, 74  
 Pew in 1590, 72-4  
 Pyrots, 72  
 Sayce, R. U., 25, 32, 114  
 Scott, Sir G. G., 134*n*.  
 Searle, Edward, 61  
 Selve, Mr, 76  
 Seracold, Mr, 61  
 Seward, A. C., *Foliage, Flowers and Fruit of Southwell Chapter House*, 1-32  
 Seward, Mrs, 31  
 Sheffield, Edmund, 72  
 Shelford, Great, 75, 78, 128  
 Little, 128  
 Shepreth, 68  
 Sherwood Forest, 1  
 Shudy Camps, 73, 79  
 Simeon, Charles, 70  
 Simpson, C. H., 21

- Sizer, Jonathan, 62  
 Smith, F. H., 118-19, 125  
 Soliam, 84, 142  
 Southal, Edward, 66  
     Henry, 66, 67  
 Southery Ferry, 90, 93  
 Southwell, 1  
     Chapter, 1, 3  
     Chapter House, 2-32  
     Choir, 2, 4, 29  
     Choir screen, 3, 22  
     Chorister stalls, 21  
     Collegiate Church, 1  
     Diocese, 1  
     Grammar School, 29, 31  
     Manor, 1  
     Masons, 11, 21, 26, 28  
     Minster, 1, 2, 27, 31, 32  
     Provost, 21, 22, 27, 30, 31  
     See, Arms of, 1  
     Song School, 31  
     Verger, 30  
     Vestibule, 12, 25, 26  
     Vestry, 4, 12, 13  
*Southwell Chapter House, Foliage,  
 Flowers and Fruit of*, by A. C.  
     Seward, 1-32  
 Sparke, J. H., 70  
 Squire, Wright, 69  
 Stapleford, 65, 128  
 Statham, H. H., 31  
 Steel, A. B., 87  
 Steeple Morden Church, 59, 65, 128  
 Stenton, F. M., 1, 35, 43  
 Stephenson, Carl, 33, 34, 35, 36, 39,  
     41, 45, 49, 53  
 Sterne, Mr, 77  
 Stetchworth, 128  
 Stewart, J. R. B., 130  
 Stewkins, Alice, 61  
 Stirrop, William, 76, 78  
 Stokes, H. P., 33, 46, 47  
 Stonehenge, 125  
 Stow-cum-Quy, 63, 84, 128  
 Stretham, 60, 68, 69, 70, 71, 75, 78, 85  
     Sandys Chapel, 60, 68  
 Stukely, William, 37, 92  
 Stuntney, 71  
 Sturges, Thomas, 63  
     Charles, 63  
 Sutton, 61, 62, 71  
     Vicarage, 69  
 Swaffham Bulbeck, 70  
     Prior, 70, 85, 129  
 Swaine, John, 67, 69  
 Swale's Fen, 117  
 Swavesey, 71, 85, 129  
  
 Tait, Professor, 35, 47  
 Taylor, Dr, 75  
  
 Tebbutt, C. F., 89, 97-105  
 Teversham, 85, 129  
 Tharp, Mrs, 146  
 Thetford, 43  
     Little, 86, 89  
 Thomas, Hamshaw, 30  
 Thompson, A. Hamilton, 7, 32  
     D. V., 21  
 Thorndike, Herbert, 62  
 Thornham Parva, 22, 32  
 Thriplow, 85  
 Tickill Psalter, 28, 31  
 Tinley, Dr, 75  
 Tomson, James, 77  
 Topping, W., 68  
 Trotter, Henry, 62  
 Trumpington, 62, 77, 129, 144  
 Tydd St Giles, 59, 64, 71, 85  
     Parishioners, 64  
 Tyndall, Humphrey, 75  
  
 Upware, 92  
  
 Vavasour, Charles, 61, 66  
 Venn, J. A., 136  
 Ventris, Edward, 78  
     Mrs, 78  
 Violet-le-Duc, 9, 32  
  
 Waite, David, 66  
 Walker, R., 65  
     R. G., 37  
     T. A., 134  
 Walpole, 64  
 Ward, T. W., 59, 66  
*Warkworth, John (c. 1425-1500), and  
 his Chapel in St Mary's-the-  
 Less, Cambridge*, by E. A. B.  
     Barnard, 131-5  
 Waterbeach, 71, 90, 92, 93, 95  
 Wendy, 62  
 Wensley, Robert, 67  
 West Water, 94  
     Wickham, 129  
     Wrattling, 129  
 Whaddon, 129  
 White-Thomson, Dr L. J., 135  
 Whittlesey St Andrew, 59, 60, 68, 69,  
     70, 71, 85  
     St Mary, 60, 65, 67, 68  
 Wilbraham, Great and Little, 59, 85,  
     142, 143  
 Wilkinson, Mr, 71  
 Willingham, 67, 129  
 Willis, Professor, 131  
 William I, 87, 89  
 Williams, Edward, 60  
 Wilton Bridge, 146  
 Wimpole, 59, 65, 66, 85  
 Wisbech, 60, 61, 66, 93

- Wisbech, St Mary, 61, 85  
St Peter, 61, 63, 64, 65, 66, 67, 69,  
70, 71, 85, 132  
Wissey, River, 93  
Wood Ditton, 85  
Wood, Elizabeth, 63  
Worksop Priory, 28
- Worsted Street, 96  
Wright, Alice, 69
- York, 35  
Archbishop of, 1, 2, 3  
Chapter House, 3, 6  
Minster, 1, 2





# CONTENTS

## OF PROCEEDINGS,

VOL. XXXV, OCTOBER, 1933-34.

	PAGE
List of Presidents . . . . .	xi
List of Members of the Society . . . . .	xiii
Report of the Council and Summary of Accounts for 1934 . . . . .	xxv
The Foliage, Flowers and Fruit of Southwell Chapter House. By A. C. SEWARD, Sc.D., LL.D., F.R.S. . . . .	I
The Origin of the Borough of Cambridge: a Consideration of Pro- fessor Carl Stephenson's Theories. By MISS H. M. CAM, M.A..	33
The Faculty Books of the Diocese of Ely, 1724-1875. By W. M. PALMER, M.D., F.S.A. . . . .	54
Investigation of the Ancient Causeway in the Fen between Fordy and Little Thetford, Cambridgeshire. By T. C. LETHBRIDGE, B.A., F.S.A. . . . .	86
The Car Dyke, the Cambridgeshire Ditches, and the Anglo-Saxons. By T. C. LETHBRIDGE, B.A., F.S.A. . . . .	90
Ancient Lime-kilns at Great Paxton, Hunts., their relation to the Anglo-Saxon Church at Great Paxton, and a Tentative Scheme for dating Pottery of the Late Saxon Period. By T. C. LETH- BRIDGE, B.A., F.S.A., and C. F. TEBBUTT. . . . .	97
Report on the Excavation of Two Sites in Mildenhall Fen. By C. S. LEAF, B.A., F.S.A, with note by T. C. LETHBRIDGE, B.A., F.S.A. . . . .	106
Cambridgeshire Inclosure Documents in the University Library. By B. F. C. ATKINSON, Ph.D. . . . .	128
Hoard of Roman Coins from Linwood Farm, March. By L. C. G. CLARKE, M.A., F.S.A. . . . .	130
John Warkworth (c. 1425-1500) and his Chapel in St Mary's-the- Less, Cambridge. By E. A. B. BARNARD, M.A., F.S.A., F.R.Hist.S. . . . .	131
Recent Demolitions on Peas Hill, Cambridge. . . . .	136
A Clay Lamp of the First Century A.D. in the Museum of Archaeology and Ethnology, Cambridge. By DR PHIL. FRITZ HEICHELHEIM.	139
Archaeological Notes. By T. C. LETHBRIDGE, B.A., F.S.A., M. O'REILLY, B.A., and C. S. LEAF, B.A., F.S.A. . . . .	141
Index . . . . .	147