

---

**Proceedings of the  
Cambridge Antiquarian Society**  
(incorporating the Cambs and Hunts Archaeological Society)  
**Volume LXXXVIII**  
for 1999

---

**Roman Cambridge**

**Excavations on Castle Hill 1956–1988**

John Alexander and Joyce Pullinger



*This volume is dedicated to more than 400 volunteers who worked in their free time on the excavations and post excavation work, and to those contributors to the final work who did not live to see the results: Don Allen, Bernard Denston, Ray Farrar, Chris Godfrey, Rex Hull, Joan Liversidge and John Scott.*

---

# **Roman Cambridge: Excavations on Castle Hill 1956–1988**

**John Alexander and Joyce Pullinger**

With contributions by: D Allen, G Allen, G Bailey, M Blackburn, B C Burnham, P Croft, C B Denston, P de Jersey, B Dickinson, C Evans, R A H Farrar, R Flood, F Gardiner, D Haigh, B Hartley, K Hartley, M H C Hassall, M Henig, M R Hull, J Liversidge, A Rotherham, M F Sekulla, A Taylor, G R Thoday, F Weatherhead, P White, M Woudhuysen

Illustrations by Anne Rotherham, Andrew Boyle, Cecily Hargreaves, Linda Meadows, Joyce Pullinger, John Alexander, M R Hull, Christopher Godfrey, Keith Underwood, Sarah Wroot

Photography by John Scott, the authors, the editor and others

---

## **Proceedings of the Cambridge Antiquarian Society** (incorporating the Cambs and Hunts Archaeological Society)

### **Volume LXXXVIII** **for 1999**

Editor: Alison Taylor

**Published by the Cambridge Antiquarian Society 2000**

ISSN 0309-3606

---

## Officers & Council, 1999–2000

---

*President*

P Warner PhD

*Vice-Presidents*

C C Taylor FBA, FSA

A Meaney MA, PhD, FSHA

Professor M B Hesse MSc, PhD, FBA

*Disney Professor of Archaeology*

Professor Lord Renfrew MA, ScD, FSA, FBA

*Curator of the University Museum of Archaeology and Anthropology*

D W Phillipson MA, PhD, FSA, FRGS

*Ordinary Members of Council*

D Banham MA, PhD, DipEA

C Chippindale PhD

D Cozens

E M Davis

R Desmond

S R Edgington PhD

N James DipEA, MA, PhD

T Malim BA, MIFA

C Pritchett MA

P Saunders PhD

M E Shepherd MA, PhD

M E Stazicker MA

*Secretary*

S M Oosthuizen MA, PGCE

Board of Continuing Education

Cambridge CB3 8AQ

*Treasurer*

J Shepherd MB, ChB, PhD

28 Barton Road

Cambridge CB3 9LF

*Editor*

A Taylor BA, MIFA, FSA

40 Hertford Street

Cambridge CB4 3AG

Tel: 01223 500431

*Registrar*

D Fage MA

178 Fishpool Street

St Albans AL3 4SB

Tel: 01727 847562

*Hon. Librarian and Assistant Editor*

J D Pickles MA, PhD, FSA

The Old Schools

Cambridge CB2 1TN

*Excursions Officer*

C Butler Dip. Rur. Est. Man.

10 Huntingdon Road

Cambridge CB3 0HH

*Editor of Conduit*

T Reynolds PhD

Archaeology Section, Cambridgeshire County Council

Castle Court, Shire Hall, Cambridge

*Representative of the Cambridgeshire Local History Society*

J M Farrar MA

*Hon. Auditor*

R E Seaton CIPFA, IIA

---

## Contents

---

<b>Prefaces</b>	4
<b>Editorial</b>	6
<b>Acknowledgements</b>	7
<b>Summary</b>	8
<b>Chapters</b>	
1. Introduction	9
2. The Iron Age Settlement	17
3. First Century Settlement and a Possible Roman Fort	27
4. Civil Settlement of the 2nd Century	35
5. The Third and Early Fourth Centuries	49
6. The Fourth Century Walled Town	59
7. Discussion and Conclusions. A Taylor	75
 <b>Appendices</b>	
I. The Small Finds. F Gardiner, M Henig and J Pullinger	85
II. The Glass. J Liversidge	107
III. The Coins. M F Sekulla, G R Thoday and P de Jersey	109
IV. The Amphorae. J Pullinger	113
V. The Iron Age pottery. R A H Farrar and M R Hull, J Pullinger	117
VI. Samian Ware. B Dickinson	131
VII. The Roman Pottery. M R Hull and J Pullinger	141
VIII Roman Pottery Illustrations. J Pullinger, B C Burnham, A Rotherham and P White	145
IX The Mortaria. K Hartley	201
X. Roman pottery. M R Hull	209
XI. Building materials. J Pullinger and F Weatherhead	251
XII. Summary of excavations post-1988. C Evans	255
<b>Bibliography</b>	
<b>Index</b>	

---

## I. The Small Finds

F Gardiner, M Henig and J Pullinger

---

### Brooches

Fiona Gardiner

All but one of the brooches belong to the 1st century AD. It is probable that one or two may predate the Roman conquest and belong with Iron Age features.

#### Plate I

- 1 RGS IIC 36 Langton Down type. The bow is straight coming to a point at end of the catchplate. Length 42mm: Early to mid 1st century AD.
- 2 SH 84 407 Unclassified. An extremely corroded brooch showing some Belgic features similar to trumpet-headed and allied brooches found at Colchester. Spring badly corroded and only small butt of pin remains. Narrow neck features below head of brooch and vestiges of decoration remain on head. Two small buttons remain. Very shallow curve to bow. Catchplate badly corroded. Length 5.65cm. In production c. 30–50 AD.
- 3 RGS Ib 191 Colchester type: Camulodunum III. Coiled spring, chord of spring passing over top. 8 turn spring. Pin intact but no bow remaining. Length approx 3cm, very bent: Date Sub-Belgic/pre-Roman.
- 4 CP IV 28 807 Colchester type. Very badly corroded, only bow, head and small part of catch plate remains. Bow broken and piece missing. Small side wings at head. Bow distorted and tapers to foot. Length 8.2cm. c. 45 AD.
- 5 GT Bb2 63 Similar to but smaller than Colchester brooch, a one piece brooch with simple shallow curved bow and forward hook?/loop? to secure external chord. Pin and catchplate missing. Bow almost round in section except for fairly pronounced flattening at back. Length 5.4cm. Tiberius–Nero.
- 6 RGS IIb 54b Bow of a probable Langton Down type. It is straight coming to a point at the end of the catchplate. Early–mid 1st century.
- 7 RGS IIb 54b ?Nauheim derivative. The bow is wide and leaf-shaped with marginal grooves, echoed in the flattened four-turn spring. The brooch is complete with pin and catchplate and has a small rivet mid-way on catchplate. Length 5.1cm: Pre-Roman to pre-Flavian.
- 8 RGS IV 1 505 Colchester type. Corroded and missing pin, catchplate and spring. Plain, small side-wings and small loop at head to take chord. Small part of pin/spring survives. Bow is flat, undecorated and broad, rounded off at foot without tapering. Shows five areas of encrustation or ?rivets. Length 9.2cm.



I.1(SF 31)

#### Plate II

- 9 CR 74 E4 22 149 Collingwood type B. Simple coil spring brooch with ridging on lower part of head. Head showing twist damage. Complete. Length 3.75cm: Claudian.
- 10 RGS IIb 6 814 Colchester type; spring brooch, very corroded. No hook or eyelet identifiable on head. Pin corroded into catchplate. Length 4cm: c. 45 AD.
- 11 RGS IIb 11 Nauheim derivative. Badly broken and corroded brooch with rearward facing curl which is part of broken spring. Bow is slim and appears to be an inverted type with catchplate curve at foot of bow. Length 3.9cm. Early 1st century AD.
- 12 RGS 1 108 Colchester type. Almost complete bronze brooch with six-coil spring, with faceted wings and bow. Hook hammered down over chord of spring. Catchplate and part of pin missing. Length 4.9cm. 40–50 AD.
- 13 RGS IV 2g 574 Colchester type. Badly corroded, spring has been sprung backwards. Hook still in evidence, Bow very badly corroded, especially below mid-point. Catchplate and pin missing. Length 3.75cm. 1st century AD (possibly first half).
- 14 RGS IIb 37 48 Colchester, Belgic or sub-Belgic type. Well preserved bow with upward-standing rearward-facing short hook for chord of spring. Bow faceted, catchplate complete and pierced with three rectangles. Spring and pin missing. Length 5.4cm. Pre-Roman down to end of 1st century AD.
- 15 SH 84 Colchester derivative type B. The plain wings curve

to seat the spring which is held by a projecting plate; the lower hole is the axis bar which runs through the coils. The bow has a step down each side. The catchplate is pierced in three places and is complete with pin groove. Only a short length remaining. Length 6.3cm. Date range not certain but may be c. 35–40 to c. 60–70 AD.

### Plate III

- 16 RGS III 4 112 Fowler's type C. Penannular type brooch, with curved round ends. Pin broken short at mid-point. Diameter 3cm, approx. 1st century BC to 1st century AD.
- 17 RGS III 4a Fowler's type C; penannular brooch (curled ends). Pin missing completely. Diameter 2.6cm: 1st century BC to 1st century AD.
- 18 SH VI 74 153 Fowler's type C- penannular brooch with curled ends. Pin survives intact. No ornamentation. Diameter 2cm/ pin Length 2cm: 1st century BC to 1st century AD.
- 19 RGS Ib 118 34 Badly corroded fragment. Probably part of a Camulodunum type IV. Claudio-Neronian.
- 20 RGS VI 30 745 Possibly early Colchester. Catchplate pierced with seven round holes. Length 2.8cm: ??Tiberius–Nero.
- 21 RGS VI 11 526 Nauheim derivative. Curled end part of simple spring. Flattened foot widened to catchplate (which is missing) Length 3.6cm: c. 75 AD.
- 22 RGS IIb 50 70 A development from an early Colchester type but not a fully developed Aucissa brooch. Length 32mm. 50–65 AD.
- 23 RGS Ia 61 32 Colchester derivative type A. Heavily corroded. Rearward facing hook missing as is pin. Catchplate solid and intact. May be fluting down back of bow which appears to have been bent into a tight more angular curve. Length 3.6cm: 40–50 AD, out of use by 65 AD.
- 24 RGS IIb 54b 72 Camulodunum type IV, lacking pin. Three cordons on each side wing and a knurled cordon runs down the bow. The catchplate is incomplete. Length 40mm. Claudio-Neronian.
- 25 Northampton Street. Colchester type B. Two piece brooch. Well preserved brooch but pin missing. Each wing has two grooves at the end. Central ridge over head extending down onto bow and tapering to a point. Near spring there is a raised pierced ridge – possibly derivation from skeuomorph hook for holding spring return. Well defined rope engraving down either side of spine of bow. Catchplate intact and pierced by a single large hole. Length 3.85cm. Earliest type of Colchester, c. 40–50 AD.

### Plate IV

- 26 RGS III 4a 138 Aucissa brooch. A well preserved brooch although pin missing. Zigzag design down the outside edges of the bow. Solid catchplate. Length 52.5mm. Augustus–Nero.
- 27 CP VII 109 813 Aucissa brooch (early hinged brooch). Broad flat bow arched to semi-circle with longitudinal mouldings. Head (complete) is rolled over axial bar on which pin is hinged, with terminal knobs, large knobbed foot, junction of which with bow marked with a transverse moulding. Well preserved apart from tip of pin. Mouldings on bow well preserved. Length 4.7cm. Type generally dated Augustus–Nero, probably introduced to Britain by conquering army (standard wear).

28 PH 83 F51 1 Hod Hill type. Corroded and very little remains of this brooch – merely part of the decorated upper panel of the bow down to the transverse marking before the foot (which was often a separately made feature.) Part of the broad catchplate also remains. Length 3.45cm: c. 50 AD.

29 CR 74 D2 & Fi 1a 35 Hod Hill type, showing pronounced fluting. Head broad, plain and rounded for spring. Fragment of pin survives. Only upper part of bow remains. Length 2.1cm: approx 75 AD.

30 SP H 5 27 Probably early spring brooch. Bow markedly arched with pronounced button. Broad head narrows to a neck before widening. Loop for alternative uses as pendant; loop fixed into spring. Decorative ring on loop. Length 5.8cm: c. 43 to end 1st century AD.

### Plate V

- 31 RGS VI on top 747 Hod Hill type with lateral lugs set in middle of each side of the bow. A complete brooch. Upper panel ridged and separated from head by cross moulding and fluted rise. Head rectangular, concave and houses the pin. The concave surfaces at the bottom of the upright widen towards the middle and taper off towards the end. Lugs protrude from each side of the upper bow and show delicate moulding. Length 4.65cm: c. 75–c. 100 AD.
- 32 SH 83 VI 61 195 Hod Hill type; winged bow type with lateral lugs set in the middle of each side of bow. Almost complete with well preserved lateral lugs. Pin and part of catchplate missing. Axe head ?cross section of bow. Ridged mouldings on head and bow. The lugs have rounded terminal knobs. Button foot. Length 3.5cm: Period 3.
- 33 HM A35 36 72 Dolphin type brooch of the hinged kind. Catchplate missing, pin broken (1.25cm long). Notched design on wings which seem to thicken towards the ends. Grooved spine towards top of outside face of bow. Length 2.45cm.
- 34 RGS VI 306 772 Hinged brooch. Pin Missing. Bow comma shaped with thick rounded head and side-ways cylindrical. Solid catchplate. Bow semi-circular in section (D-section) and has double ridge decoration at mid-point. Length 4cm: Period 5 or 6.
- 35 PG J2 12 Two piece dolphin brooch – sprung type. Bow is comma shaped and of D-section. It does not taper and ends in a waisted knob which may have been made separately. The pin is missing and the rounded decorated head has a small loop to take a chord. The catchplate has small pierced triangle. Length 5.8cm: Period 2.
- 36 CR 74 D513 89 Plate brooch, probably crescent shaped although top section and catchplate missing. Simple hinged pin remains intact. Rim has circular terminals and plate shows possible seating for enamelled ornamentation Length 2.25cm: (apparently half length). Pin length 2.25cm. Claudio-Neronian.

### Plate VI

- 37 SH VI F42 53 147 Dolphin type fibula, Collingwood type H. The side wings are plain but show evidence of ending in a notched stud. The bow is plain but has a raised knurled central ridge from above mid-way up to and over shoulder ridge. The catchplate is solid and complete. Pin broken and missing from below hinged part.

Length 4.5cm: 1st century to first half 2nd century.

- 38 CR Crossbow type with heavy terminal knobs, knobs showing incised decoration at their base and remnants of pattern on back of spine of curved portion of bow. Straight leg section with three repeats of Celtic type semi-circular curls. The pin-holder is very curved incorporated in the straight leg of brooch. Length 6.8cm: mid-late 4th century.

- 39 SH 84 Spring of bronze fibula.

## Pins

### Bone

#### *J Pullinger*

Over 60 bone pins were found. Five main groups were represented. All appear to be hand carved. Bones in various stages of working through to the finished pin were found together in a well (Plate XXII).

#### *Plate VII*

Group 1. Pins with plain conical head. Nos. 40 to 49 This type of pin has a plain tapering shaft, the thicker end being shaped to form a short point. 18.1cm to 19.6cm.

- 40 CP VIII 5e 369 Shrine. length 9.05cm.  
41 CP VIII 11dg 555 Shrine. length 8.8cm.  
42 CP VIII 5d 348 Shrine. incomplete.

Group 2. Pins with 1–4 transverse grooves beneath a conical head. Nos. 43–48. Similar to Group 1. Several broken, those complete show a marked bend towards the point of the pin.

- 43 CP VIII 5g 378 Shrine. length 11.5cm.  
44 CP VIII 5e 368 Shrine. length 10.9cm.  
45 RGS V 12 609 Pit, late 1st to early 2nd century. Tip missing.  
46 RGS IV 11k 579 Shrine. Tip missing.  
47 RGS IV Shrine. incomplete.  
48 CP VIII 4 301 Shrine. incomplete.

Group 3. Pins with a near hemispherical head. Nos. 49–63. The heads in this group vary in shape slightly. Most of these pins have a swelling part way down the shaft. There are more in this group than any other group.

#### *Plate VIII*

- 49 RGS IV 11a 536 Shrine. Length 8.5cm.  
50 RGS IV 11a 535 Shrine. Length 8.8cm.  
51 CP VIII 5b 311 over shrine. Length approx 11.4cm.  
52 CP VIII 5b over shrine. Length 12.75cm.  
53 CP V 14 Incomplete.  
54 RGS VI 11683 Shaft. Incomplete. Length 6.8cm.  
55 RGN II 16635 Early pit. Incomplete.  
56 SH 83 VI 64145 Incomplete.  
57 RGS IV 11e 551 Shrine. Incomplete.  
58 RGS VI 11b 551 Shrine. Incomplete.  
59 RGS VI 5a 659 Shaft. Incomplete.  
60 RGS VI 1 642 Top RB spread. Incomplete.

- 61 SH 83 VI F14 95 Incomplete. Length 5.5cm.  
62 566 Incomplete.  
63 RGS IV 11520 Incomplete. Length 7.3cm.

#### *Plate IX*

Group 4. Pins with faceted sides, conical and flat. Nos. 64–69. All have a swelling on the shaft.

- 64 RGN II 10627 Incomplete.  
65 CP VIII 32a 358 3rd–4th century Pit. Incomplete.  
66 RGS VI 19a 705 Incomplete.  
67 RGS VI 11 3rd–4th century. Length 7.5cm.  
68 CP VIII 5d 350 Shrine. Incomplete.  
69 RGN 1a 630 Top layer. Length 6.3cm.

Group 5. Pins with one or more reels below a conical or ovoid head. Nos. 72–76. The shaft either straight or with a swelling.

- 72 RGS VI 11676 3rd–4th century shaft. length 8.85cm (complete).  
73 RGS IV 32a 587 Pit, 3rd–4th century; incomplete.  
74 RGS V 19626 Incomplete.  
75 RGS VI 5a 658 General spread 3rd–4th century; incomplete.  
76 RGS VI 11686 Shaft, 3rd–4th century; incomplete.

Miscellaneous pins Nos. 77 to 79.

Two of these have round flat heads, shafts having a swelling towards lower half. The third is entirely different from the others having a vertical circular head with a hole in the centre, small notches in the outside edge and marked swelling on the shaft.

- 77 unstratified 339, incomplete.  
78 RGS VI 1 643 Top RB spread; incomplete.  
79 RGS IV 32548 Pit; incomplete.

### Copper alloy

Group Nos. 71, 72, 80, 81, 99 & 102.

These vary from one with a conical head, a domed head with two reels below and a flattened half dome with a groove on the top.

#### *Plate IX*

- 70 RGS VI 5 644 Bronze pin; lost head, bent.  
71 RGN II 4c 648 Conical; length c. 9cm.

#### *Plate X*

- 80 RGN II unstratified.  
81 CP VIII 19325 Flattened bead head.  
158 Bead and reel headed; incomplete.

#### *Plate XI*

- 99 RGS IV 17518 Pit; incomplete.  
102 539 Incomplete.

### Jet

#### *Plate X*

- 82 CP VIII 5d 357 Shrine; pointed end, head missing.



**Bracelets, rings and beads.***Plate X*

- 83 RGS III3a 127 4th century pit; part shale bracelet with chevron patterning.  
 84 RGS IV 11528 Shale, plain; others similar. Over Shrine  
 85 SH 84 H1 Ditch under 2nd–3rd century side street. Snake headed, in bronze.  
 86 RGS V 4 611 AE fragments.  
 88 SH 83 II F8+ 33AE, incised decoration between crenellations. 8.5cm long.  
 89 SH VI F4+ 82AE, Incised pattern on bangle, multiple motif. 4th century type. 9.05cm long.  
 90 RGS IV 11527 Jet fragment, with grooves round. Over Shrine.  
 97 RGS III 30517 Incised pattern. incomplete. (see SH 83 II F8).  
 98 RGS IV 17518 AE; three strand twisted fragment.

*Plate X*

- 87 RGN II 4 606 AE finger ring with setting for intaglio. Late 2nd century house foundation trench.

*Plate XI*

- 96 SH 83 unstratified. Silvered AE finger ring – broken with small part missing, ?worn away.

*Plate X*

- 91 RGS IIB6 57 Blue glass.  
 92 RGS IIC 52 Glass bead; in 1st century cobbling.  
 93 RGS VI 11672 Pottery bead from 2nd century shaft.

*Plate XI*

- 94 SH 130 Glass bead.  
 95 SH 155 Bone bead.

**Amulets***Plate XI*

- 100 RGS Ib 3024 Pig's tusk.  
 101 CP VI 803 Pig's tusk  
 103 AE ring; ?small penannular brooch.  
 103a RGS IV 11505 ?Part of child's bangle.

**Toilet, surgical or pharmaceutical instruments***Plate XII*

- 104 RGS Ia 109 45 Pit, AE end-loop cosmetic mortar.  
 105 RGS Ib 239 99 Fort ditch; nail cleaner.  
 106 SH 83 AE tweezers.  
 107 512 Bone comb; decorated with incised circles and ring and dot motif; 5 iron rivets.  
 108 SH83 4 Oculist's stamp. Grey marble. Engraved in reverse: 'MARINI CAES L IVL. SALUTARIS PENICILLUM AD LIPPITUM', which can be translated as 'L. Julius' wholesome (remedy) to be applied with a small brush for sore/runny eyes'. (Fig. I.2)

*Plate XIII***Needles***All bone, except 115.*

- 109 SH VI 58109.  
 110 SH Fragment.  
 111 CP VIII 5e 360 Shrine.  
 112 CP VIII 5e 361 Shrine.  
 113 RGS IV 12b 570 Unstratified in later feature.  
 114 CP VIII 32a 371 3rd–4th century pit.  
 115 RGS IV 32 597 AE needle.  
 116 CP VIII 5e 362 Shrine.

**Spindle whorl**

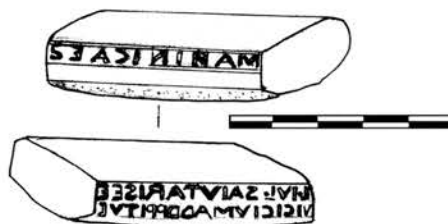
- 117 RGS IV 2 165 Pottery.

**Utensils and fittings***Plate XIV*

- 118 RGS IIc 591 Shrine; AE spoon bowl.  
 119 810 Shrine; AE spoon bowl.  
 120 RGS VI 3a656 Shaft; Bone spoon bowl.  
 121 RGS IV 11a? 525 Shrine; AE door handle on iron shaft.  
 122 804 Corer.  
 123 RGS VI 1 641 Escutcheon for bowl, ?Antonine.  
 124 RGS IV 11519 Antler knife handle.  
 125 802 AE stud from furniture.  
 126 SH83 IV +5 Olive fork?

**Bone inlay***Plate XV*

- 127 RGS IV 11509 Over Shrine; curved decorative inlay.



I.2 108 SH 83 4 Oculist's stamp



Photo: Gwil Owen, Copyright Cambridge Museum of Archaeology and Anthropology

- 128 800 Flat inlay, ring and dot in cross.  
 129 RGS III 3 116 Flat inlay, holes for rivets.  
 130 PG A1 8 Inlay on thick base.  
 131 GT Af 9 Worked bone.  
 132 GT Af 9 Worked bone.  
 133 HM A 25 16 Worked bone.

### Bronze fittings

#### Plate XV

- 134 PG 7 221 Strapping on corner of box.

### Shale

- 135 RGS I 545 110 Decorated shale fragment.

### Iron objects

Metal objects used in buildings included nails, bolts, hinges, brackets, keys etc. The largest quantity of these objects were in the fill of the shrine.

#### Nails

These square headed, square shank nails were found in many features. They varied in length from 2 to 10cm, the longer ones having thicker shanks. The greatest number of nails was in the ash layers of the burnt down shrine. A total of 2090 nails was recorded, but this figure would be considerably larger if nails that had become headless were to be added. The cellar of the house in SH 83 VI also had nails in the debris. Mostly square headed. With the addition of headless ones 61 were recorded.

#### Bolts

Though not numerous, bolts were recorded in several features. A bolt 8.5cm long was found in SH 83 VI (84) with daub, plaster and wood adhering to it and in the same trench, layer (24) were two more, 11.5cm and 9.5cm in length.

#### Hinges

Few of these were found in Roman features, but corroded ones were recorded in the fill of the shrine. Here 45 hinges and brackets were recorded.

#### Studs

Most shoe studs were found in the infant burial shafts, some with leather attached. All were *in situ*, shoes having been placed in the shaft for the child's future use. In RGS VI (11b, d & e) one pair of shoes had approximately 50 studs in each shoe. The shoes would have fitted a child of 5–6 years old; also 50 from another shoe and 30 + 26 from another pair of shoes. In Shaft RGS IV (35), 57 studs from a pair of child's shoes were found, whilst in another shaft (RGS IV (45)) a large quantity from one shoe (corroded together) with leather still attached was recovered. Over 40 studs from a child's pair of shoes was found in Shaft RGS VI (23) and 70 shoe studs were in Shaft RGS V (17). 133 shoe studs were in the rectangular pit in which a falcon was buried.

In the shrine fill 310 studs were found of which a few may have been from shoes. Most were probably associated with leather fittings, 31 were attached to

leather. The shaft in which a horse was buried (RGS VI (19c, f & h) contained 26 studs, 7 of which had leather with them. In Pit SH 83 IV F1, a triangular iron fitting had two studs attached.

### Brackets

Most were fragmentary, with the majority being found in the RG. They probably came from furniture

### Keys

The best sample came from the ash of the burnt shrine. It was badly corroded and drawn from the X-ray.

#### Plate XVI

- 136 CP VIII 5d Shrine. Iron key.  
 137 MP I 7 Fragment of lock.

### Bone counters/gaming pieces

Some of which have numerals carved into the outside edge. Many have a countersunk upper surface and all but four show an indentation from the lathe centre.

#### Plate XVI

- 138 RGS IV 7x508  
 139 RGS IV 11b 542 Shrine  
 140 CP VIII 5e 303 Shrine  
 141 RGS Ia 1213  
 142 RGS IV 7x508  
 143 CP VIII 5f 339 Shrine.  
 144 CP VIII 5e 363 Shrine. Inscribed on side IIII for IV, presumably for numeral '4'.  
 145 RGS IV 11c 571 Shrine. Inscribed on side IIIVIII, perhaps a series of numerals as III, VIII, X, or III, VII, IX. They were conceivably cut at different times, replacing each other. Parallels are known from several Roman towns (see RIB II, nos. 2440.1–2440.381). (*Mark Hassall*)  
 146 CP VIII 5d 359 Shrine.  
 147 RGS III5c 154 Palisade fill.  
 148 RGN II 6b632.  
 149 RGS Ib 185 65

#### Plate XVII

- 150 RGS IV 11g 544 Musical pipe, played like a flute, which produces at least four notes. Similar pipes were found in temples in the Rhineland (J Liversidge, pers comm). Length 10.9cm

#### Plate XVII

- 151 SH 83 IV F156 Calthrop, iron.  
 152 801 Iron ring, 2.3cm diameter.

### Measurement and writing

#### Plate XVII

- 153 SH 83? Part of bronze scale.  
 154 RGS Ib 545 106 ?Bronze stylus; length 8.7cm  
 155 SH 83 146 Top of seal-box; length 2.4cm;.

### Hones, knives etc

#### Plate XVIII

- 156 CP VIII 5c Lead rivet through potsherd.  
 157 RGS IIC 6 Hone stone.

- 158 RGS IV 11e 543 Hone stone, shrine.  
 159 CP VIII 5k 663 Hone stone, shrine.  
 160 SH 83 IV F1 5149 Hone stone.  
 161 RGS IV 14x Iron knife; late 1st century. Tip missing.  
 162 SP K 5 Iron blade.  
 163 RGS IIC 36 Antler knife handle.  
 164 RGS IV 11519 Antler knife handle; over shrine.  
 164a CR E2 4 Worked bone, hole drilled through wider part.  
     From 1st century feature.  
 165 RGS IIC 2b Iron blade on shaft.

### Harness.

#### Plate XIX

- 166 SH 83 IV F1 1025 Two bridle bits, iron.  
 167 SH 83 IV F1 5 Antler cheek bit.

### Further house and furniture fittings

#### Plate XX

- 168 CP 73 V 2 Bronze sheet, rolled, ring and dot pattern;  
 169 SH 83 IV F1 5 Fragments of iron with wood still visible.  
 170 RG H 18 Iron staple.  
 171& 172 SP J 6 Two iron cleats; length 17.8 & 18.5cm. Square  
     shanks.  
 173 CR E2 2183 Sheet Bronze, rolled.  
 174 RGS IV 11L 558 Bronze stud.

#### Plate XXI

- 175 SH 83 156 Iron hinge?  
 176 SH 83 303 Iron object(broken)  
 177& MP C 27B Large iron object  
 178 CP B3 8 circular shanks.

### Industry

#### Plate XXII

- 179 CP VIII 7b Bones in various stages of being worked to the  
     finished bone pin; from well fill.

#### Plate XXIII

- 180 CR 74 C3 2 67 Worked bone.  
 181 RGS IIC6 Horn core tip, sawn off.  
 182 CP VIII 7b Worked bone.

### Miscellaneous

#### Plate XXIV

- 183 SH 83 VI Cellar, lead object covered in bronze with five  
     ribs, on shaft, plumb-bob?  
 184-5 Bone pegs.  
 186 RGS VI 19a Worked bone.  
 187 SH 83 IV F1 5 19 Worked long bone, three prongs of comb  
     for pottery patterns?

#### Plate XXV

- 188 RGS IV 11d 556 Shrine; Bronze peg/hook.  
 189 SH 59 Perforated bronze disc  
 190 RGS IV 11b 530 Curved bronze with rivet.  
 191 SH 83 191 Bronze handle  
 192 CP 73 VI 12 Bronze buckle?  
 193 RGS II 126 Fragment of pipe-clay figurine.

- 194 SH 83 II F8 34 Fragment of bronze object ?fibula.

#### Plate XXVI

- 195 RGS V 2 811 Part of comb, criss-cross carving along top  
     and riveted on. Saxo-Norman?  
 196 805 Bone needle, long, coarse, flattish shaft. Notches  
     above eye. used for weaving?  
 197 70 Antler with riveted attachment. Ring and dot pattern  
     on outside.  
 198 CP V 2 806 Domed worked bone with central hole.  
 199 SH 83 168 Bone ring.

#### Plate XXVII

- 200 RGS Ib 253a 111 Clay loom weight from Iron Age levels.  
 201 RGS VI 19k Iron objects, drawn from an X-ray, found at  
     the bottom of the shaft with decaying wooden objects in-  
     cluding ?wheel and remains of articulated horse. Late  
     2nd century to early 3rd century.  
 202 RGS VI 19k An iron object, drawn from an X-ray, found  
     with above objects.

#### Plate XXVIII

- 203 CH 86 A X6 Iron 'fitting' from *mansio*.  
 204 CH 84 F23 Timber lined well, late 1st century. Stone  
     bowl.

### Quern Stones

Fragments were found in all sites. In the Iron Age querns were of Hertfordshire pudding stone, domed upper stone with a groove round the side. Pudding stone is also used in the first two centuries AD. Lava from Neidermendig and millstone grit was used throughout the Roman period. Fragments were found in the following levels: RGS IV (11c), RGS IV (11a), RGS IV (11), RGS IV (11, RGS V (8), RGS VI (4), RGS VI (11), RGS VI (3xx), CP VIII (32d), CP VIII (32a), CP VIII (24), CP VIII (5gh), CP VIII (5b), CP VIII (7), RGN II (9), RGN II (16g), RGS III (14a), RGS III (16a).

### The Bacchus gem

#### Martin Henig

A red jasper gem stone ovoid in shape and with a flat upper surface measuring 16mm by 12mm (Henig 1978, 35 fig 1 shape F1) was excavated within the shrine in a late Antonine or Severan context. Apart from a chip on the side which extends to the intaglio itself (and is thus not quite complete), the gem is in excellent condition and the cut areas retain the original high polish. The device is a very full bust of Bacchus (the Greek Dionysos), in profile to the left though this would be reversed in impression. He is depicted as a youth with effeminate features and long 'corkscrew' locks one of which hangs down the nape of his neck and the other in front of his left shoulder. His right shoulder and chest are covered with drapery, probably a *nebris* (garment made from an animal-skin). His upper left arm is encircled by an armlet and in his right hand, which is shown, he holds his *thyrsus*.

Ever since it was found this gem has excited admiration as one of the best representations of Bacchus

from Roman Britain and it has been published several times (Henig 1977, 366 and Plate 15; 1978, 298 and Plate XXVII, no. App. 99; Hutchinson 1986a, 437 no. Ge-3; 1986b, 140, fig 4). The intaglio is quite closely paralleled by another red jasper intaglio in the Dutch Royal collection, formerly in the Hague but now in Leiden, dated by Professor Kleibrink to the same period as the Cambridge gem (M Maaskant-Kleibrink 1978, 371 no. 1168, Plate 185). There are earlier versions cut on cornelian, perhaps of the late 1st century BC or early 1st century AD, in the gem collection at Vienna, where the god is leaning back in a relaxed manner as though inebriated (E Zwierlein-Diehl 1973 147 nos. 465 and 466). The non-masculine features sometimes make it almost impossible to distinguish between Bacchus and his female votaries, the maenads, who identified themselves with him. A 2nd century jasper from Vindolanda showing a youthful head with long tresses is the closest parallel to the type on a gem from Britain and has been taken to show a maenad (Henig 1978, 220 no. 287, Plate IX) as has an amethyst intaglio in the Fitzwilliam Museum, Cambridge (Henig 1994 141 no. 284) but they may well be Bacchus. The wine-coloured amethyst of the Fitzwilliam intaglio certainly evokes the god himself. The prominence of the *thyrsus* and the lack of breasts leave little doubt about our gem.

The conception of Dionysus as a youth with soft and androgynous features must have originated in the 4th century BC, possible with the work of Kephisotodos or Praxiteles (Lawrence 1972) and it continued to be popular throughout Antiquity in such well-known images as the swooning Bacchus in the Villa of the Mysteries at Pompeii (Lehmann 1962) or the drunken Bacchus leaning on a satyr on a mosaic in Cologne (Dorigo 1971), more or less contemporary with the Cambridge gem.

The archaeological context in which the stone was found coupled with its very fresh condition, patterned style of cutting and the material on which it was cut, allow us to date the intaglio with unusual precision. It can indeed be seen as one of the best specimens of the patterned style to have come down to us (Henig 1988). The wider significance of representations of Bacchus in Roman Britain is discussed by Valerie Hutchinson (1986a and b) but it is highly likely that whoever wore this stone as a signet regarded the god not simply as the god of the feast but as a mighty saviour, powerful in this world and the next.



I.3 The Bacchus gem

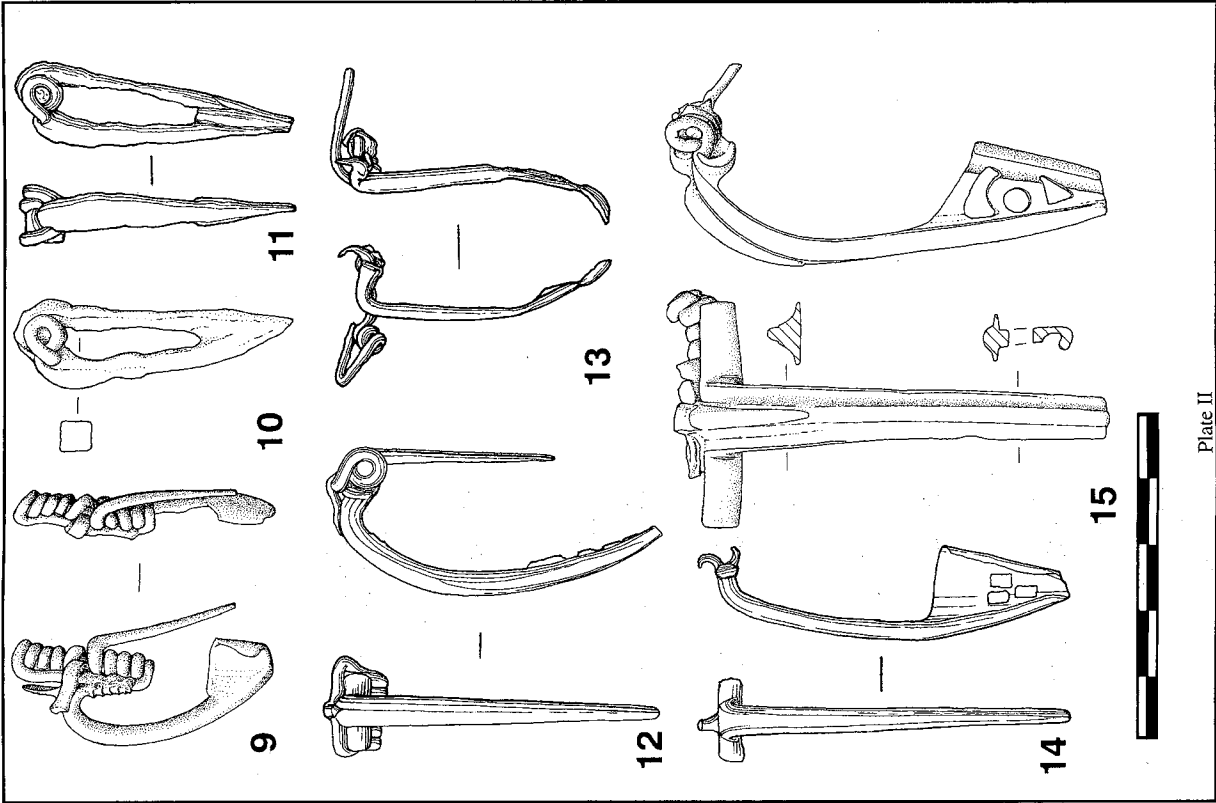


Plate II

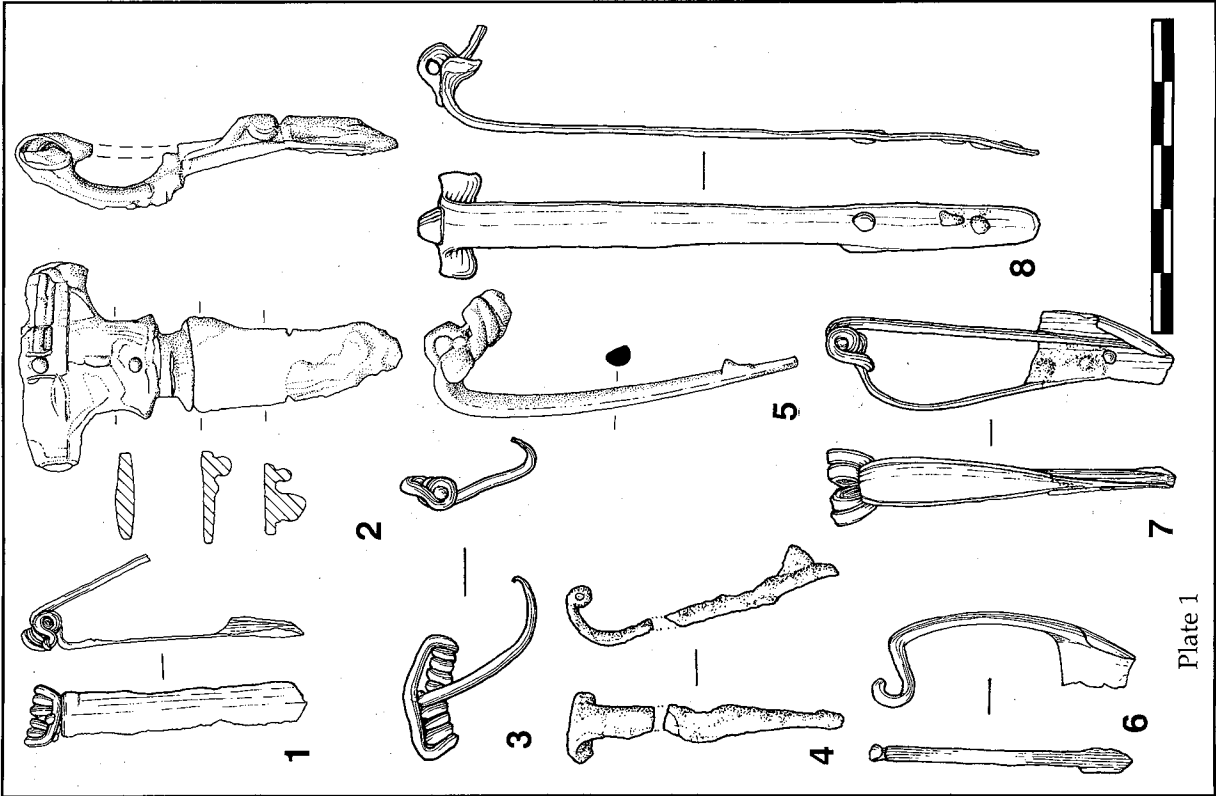


Plate I

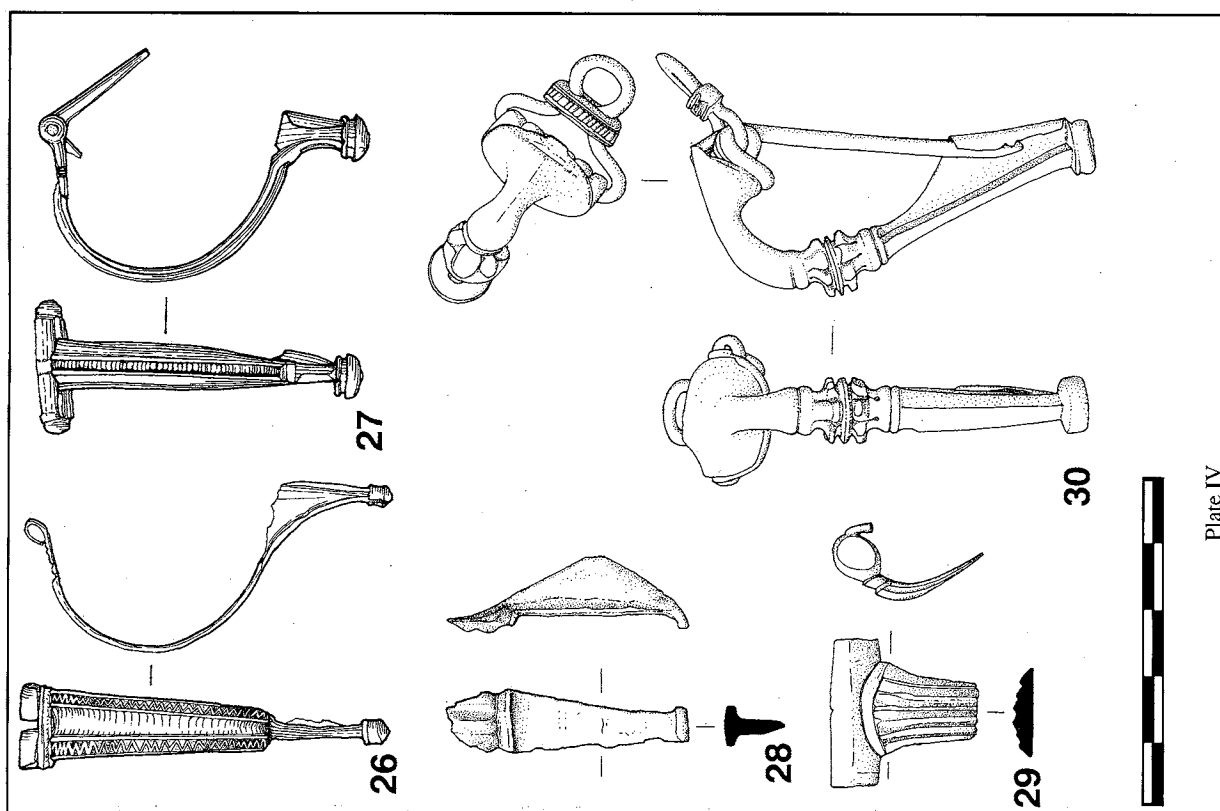


Plate IV

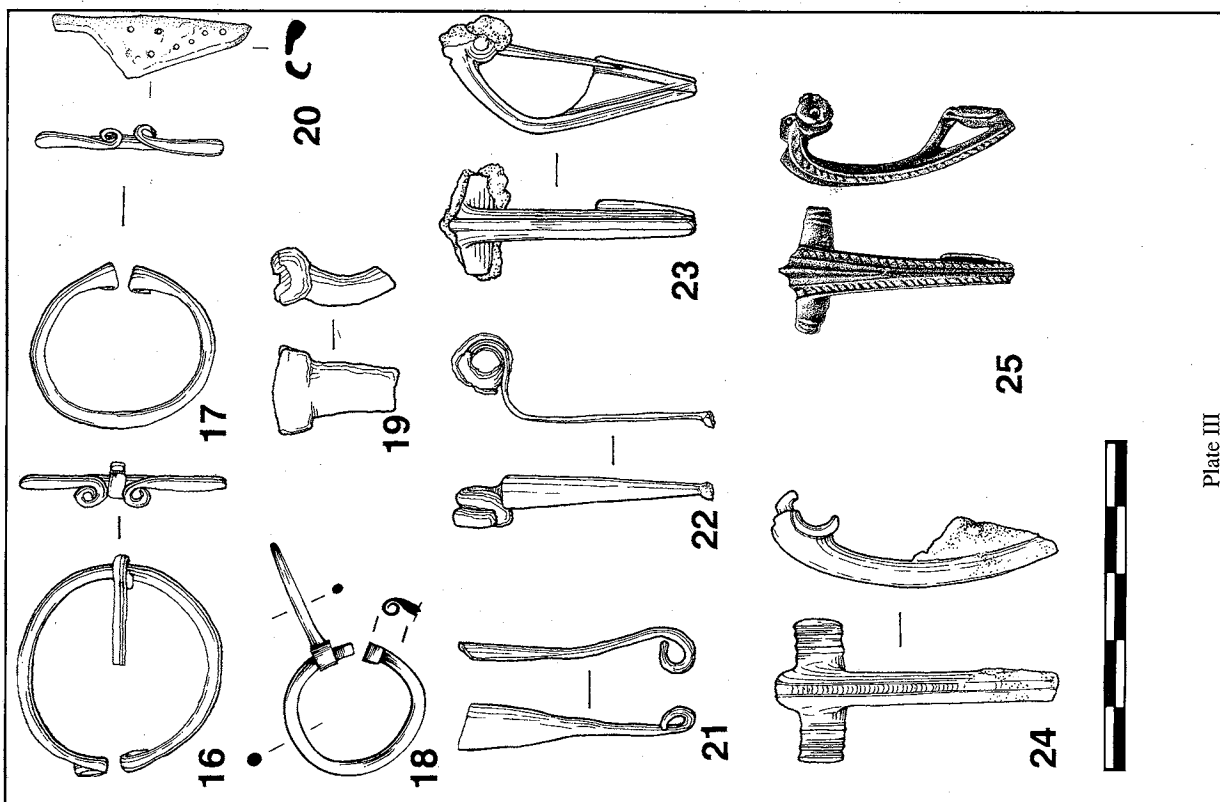


Plate III

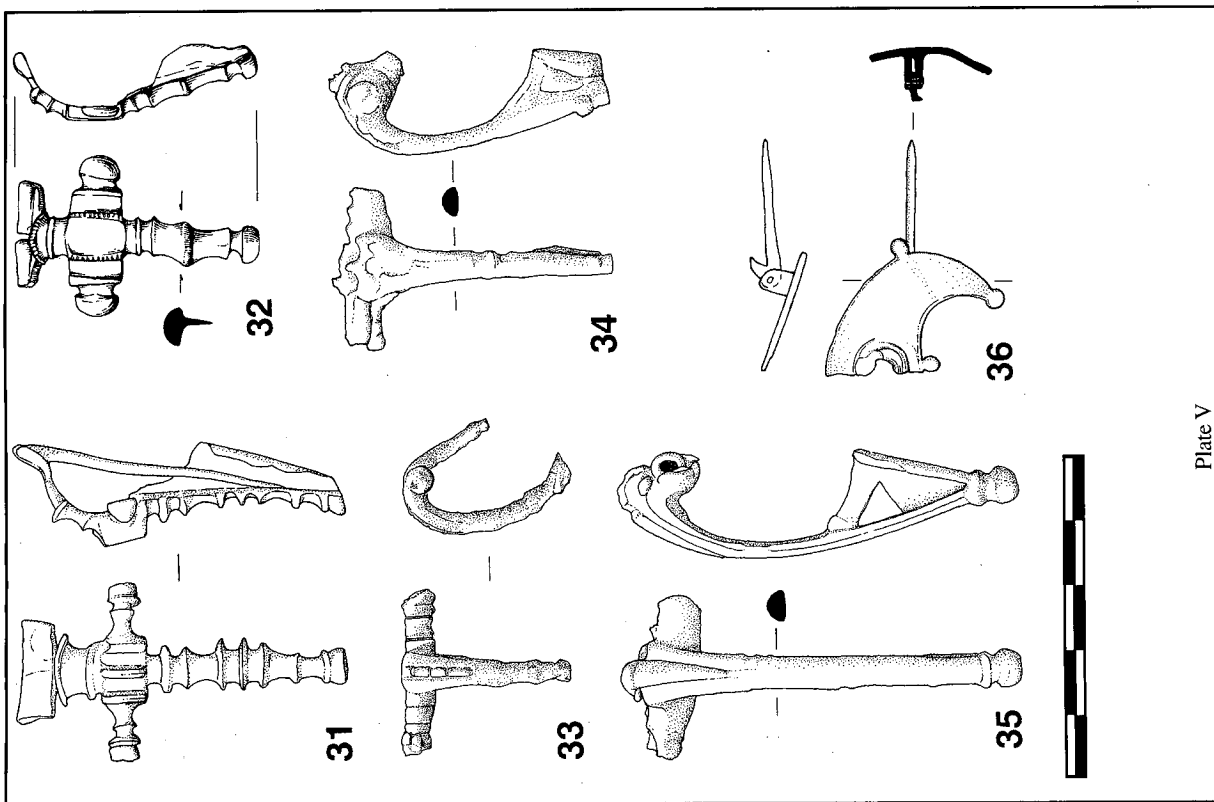


Plate V

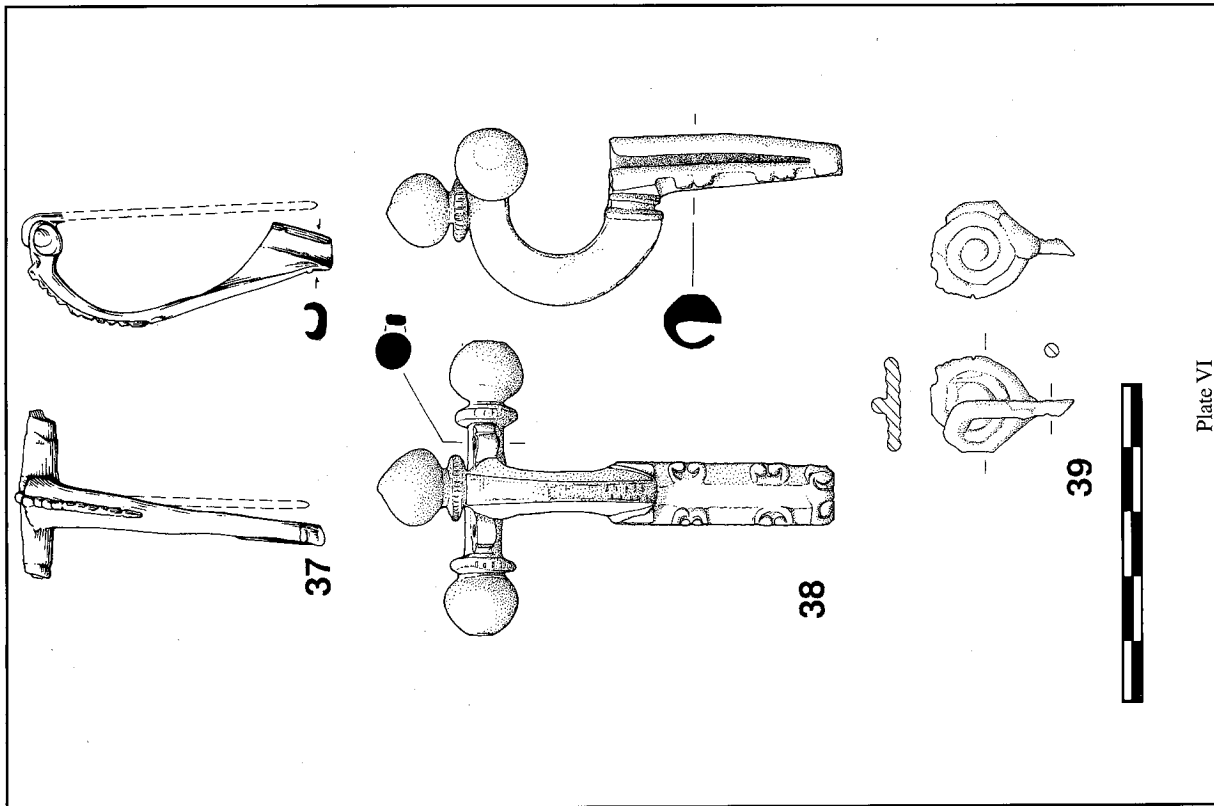
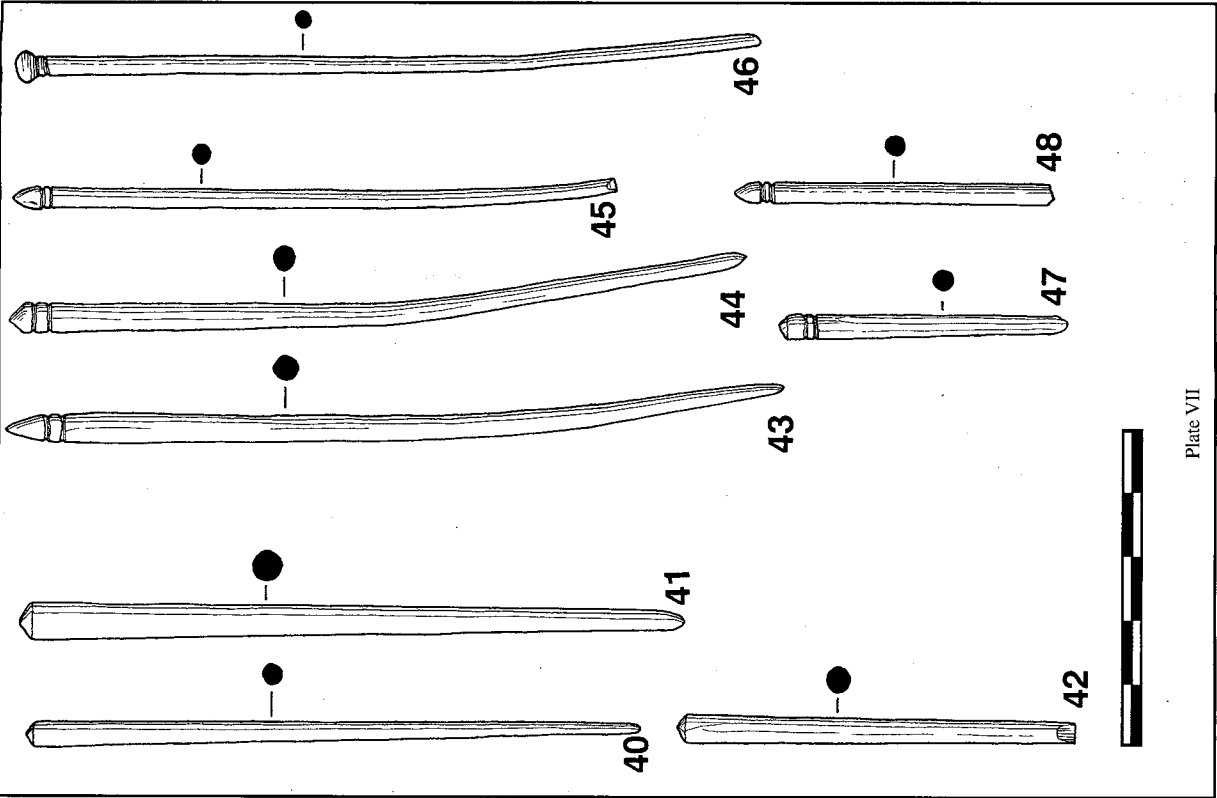
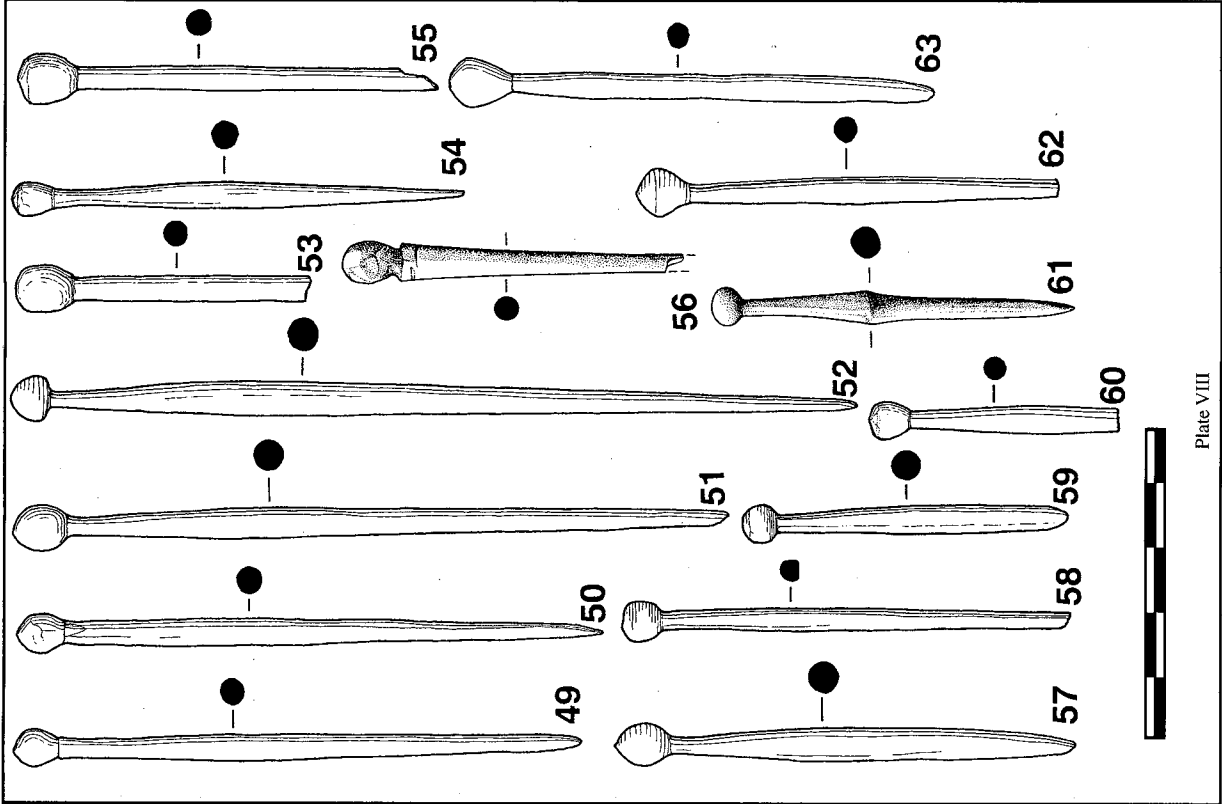


Plate VI





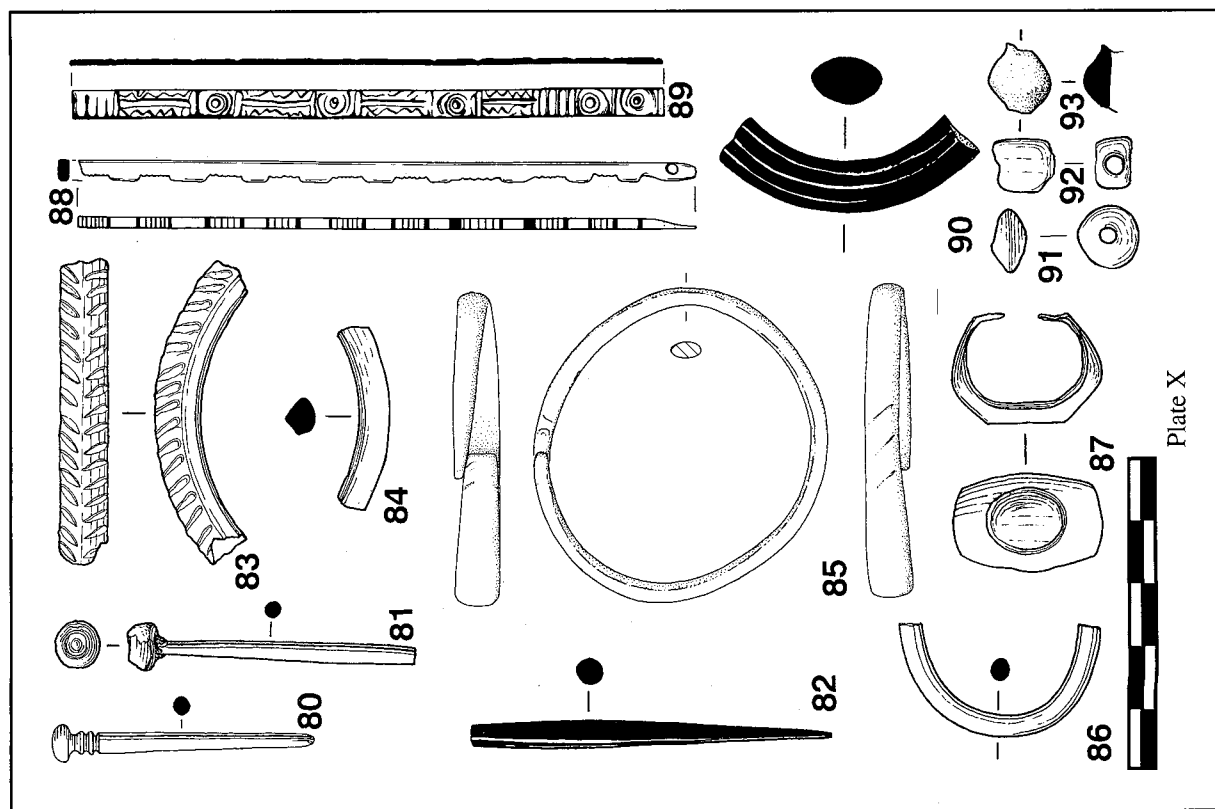


Plate X

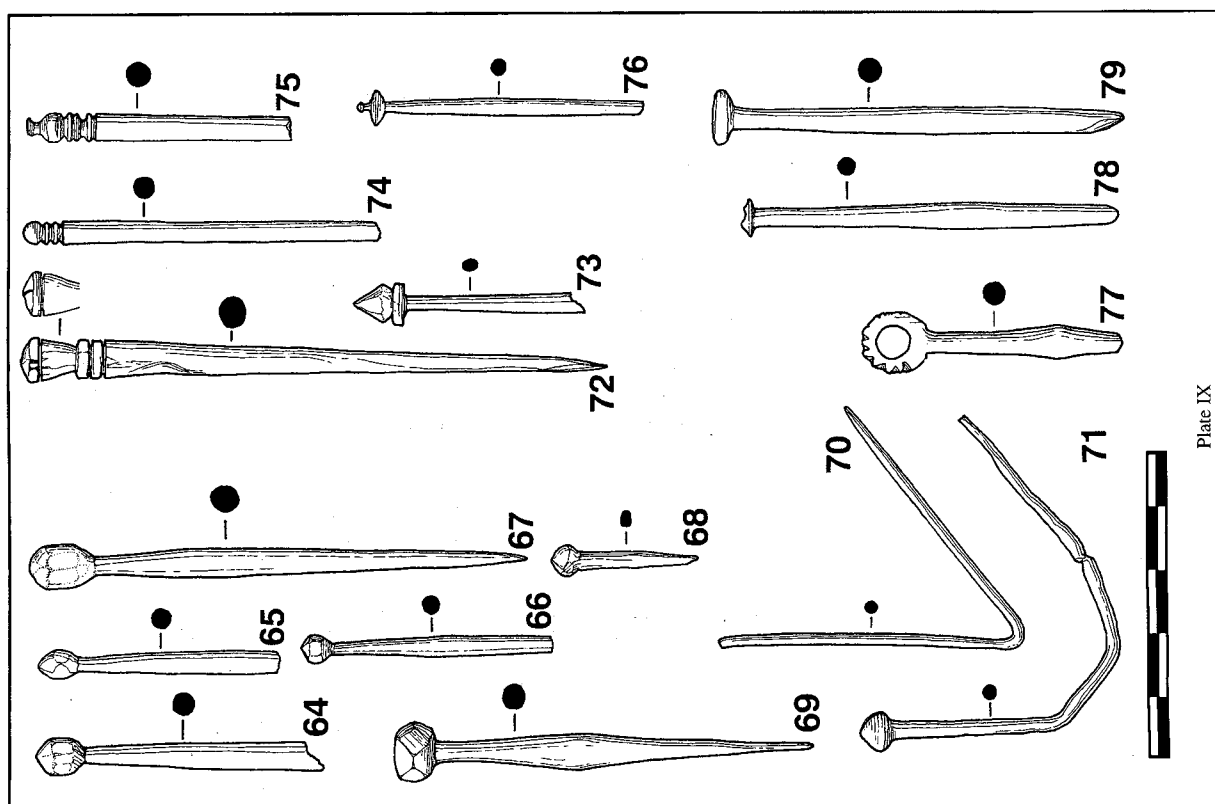


Plate IX

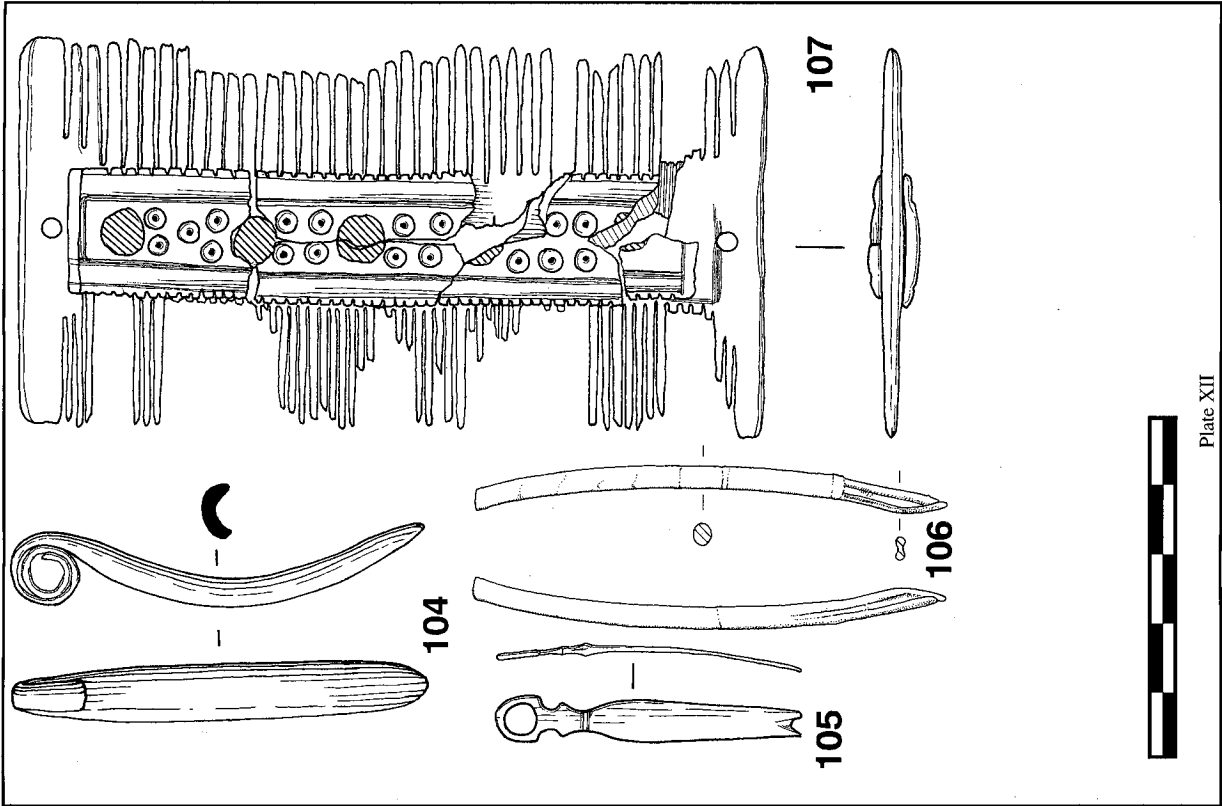


Plate XII

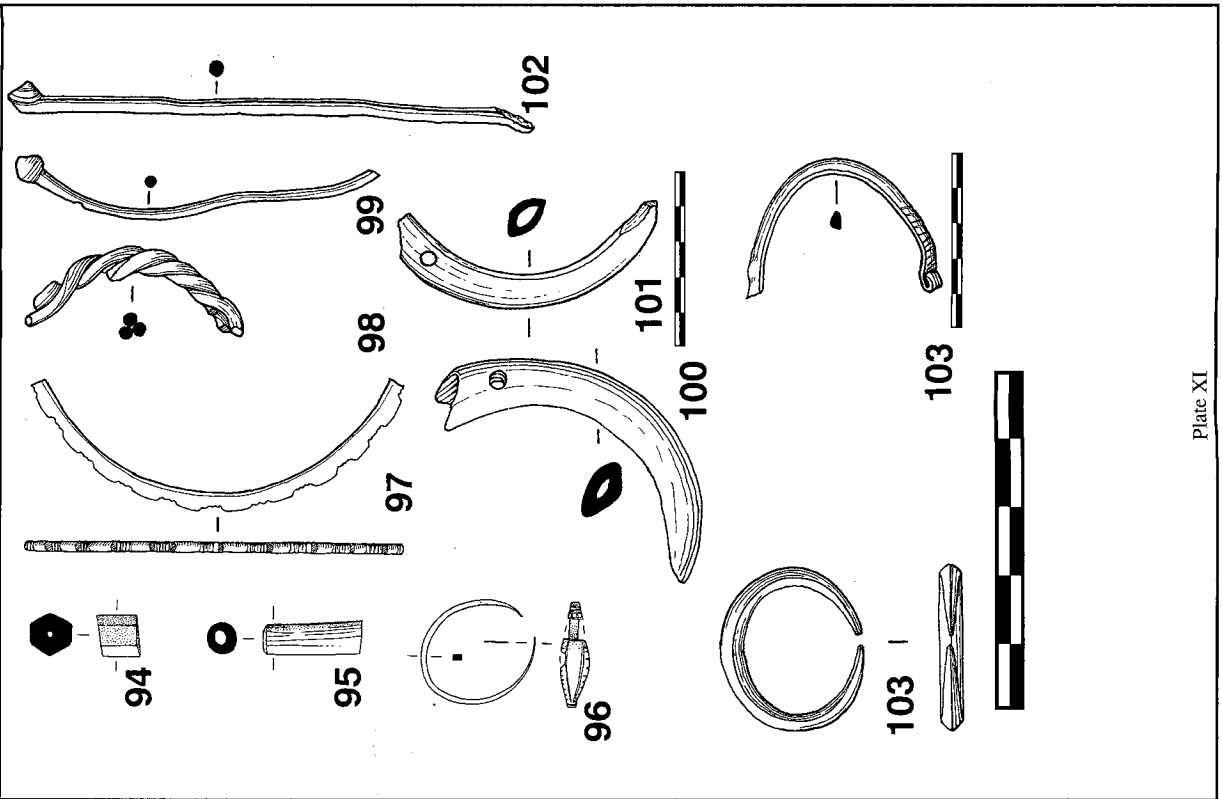


Plate XI

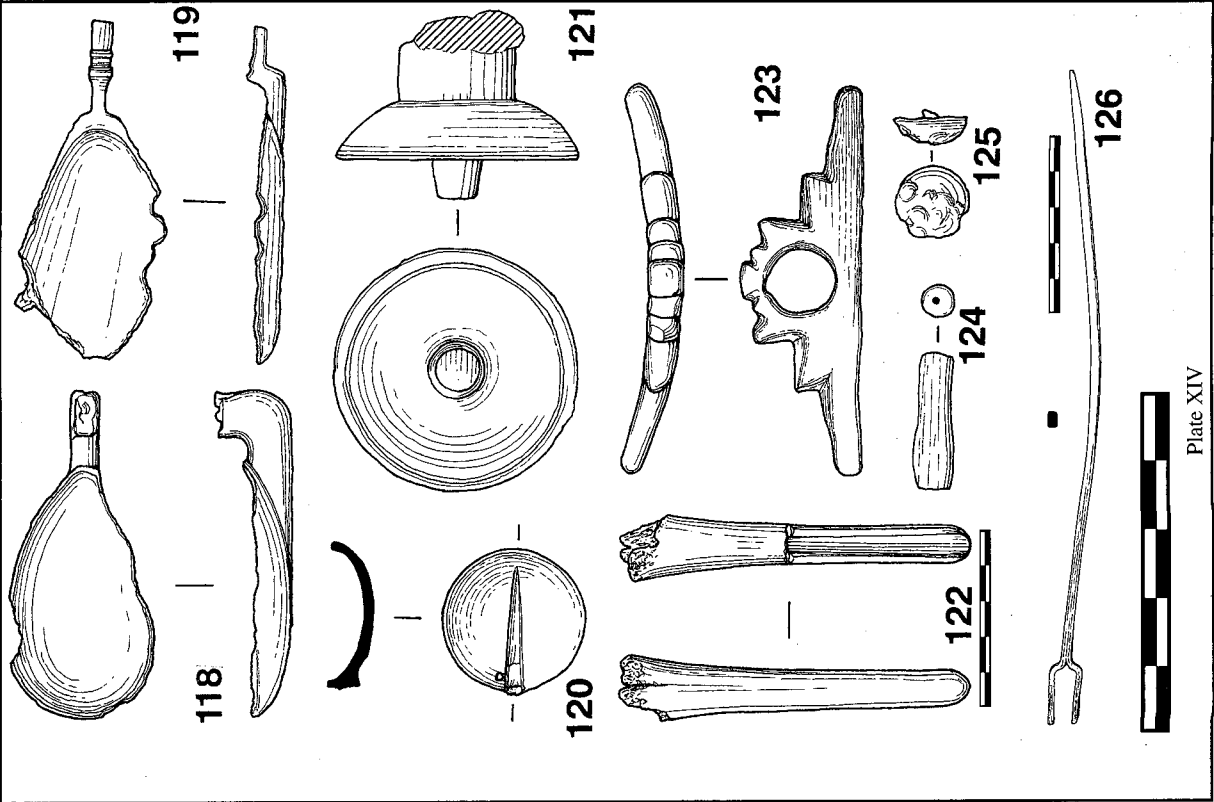


Plate XIV

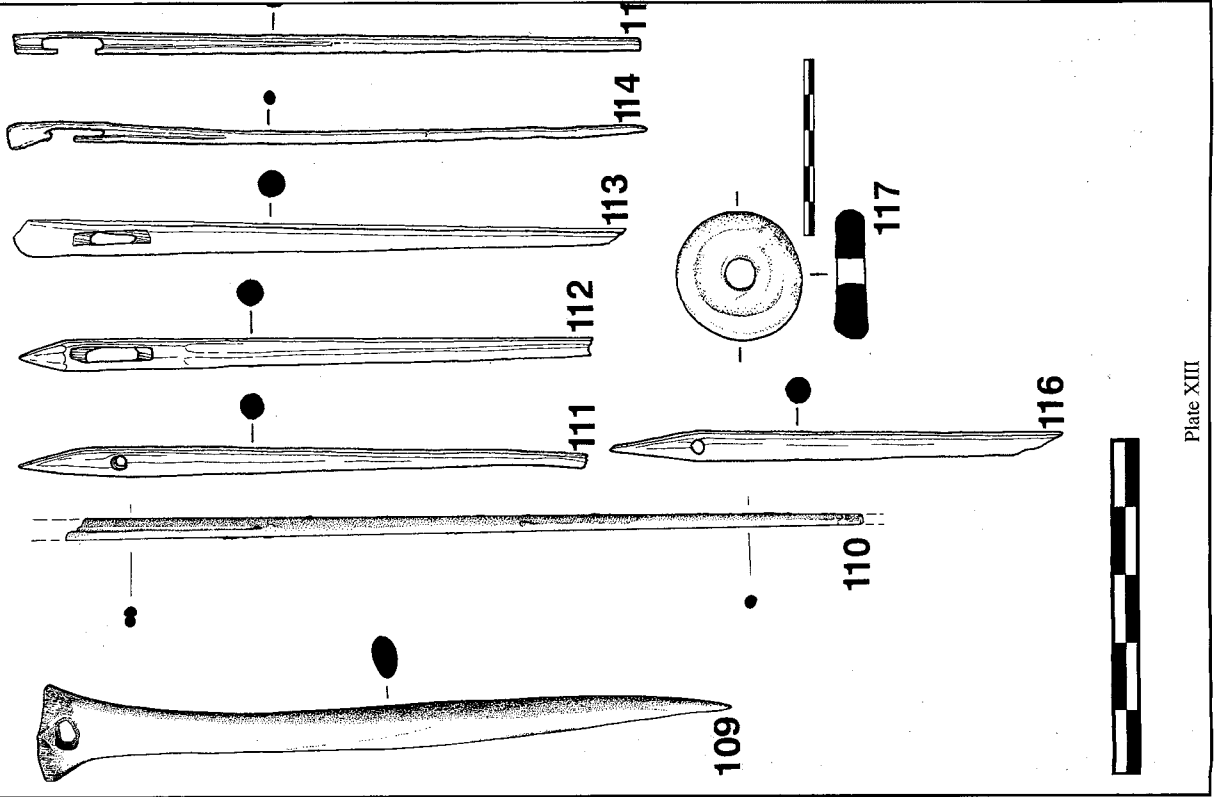


Plate XIII

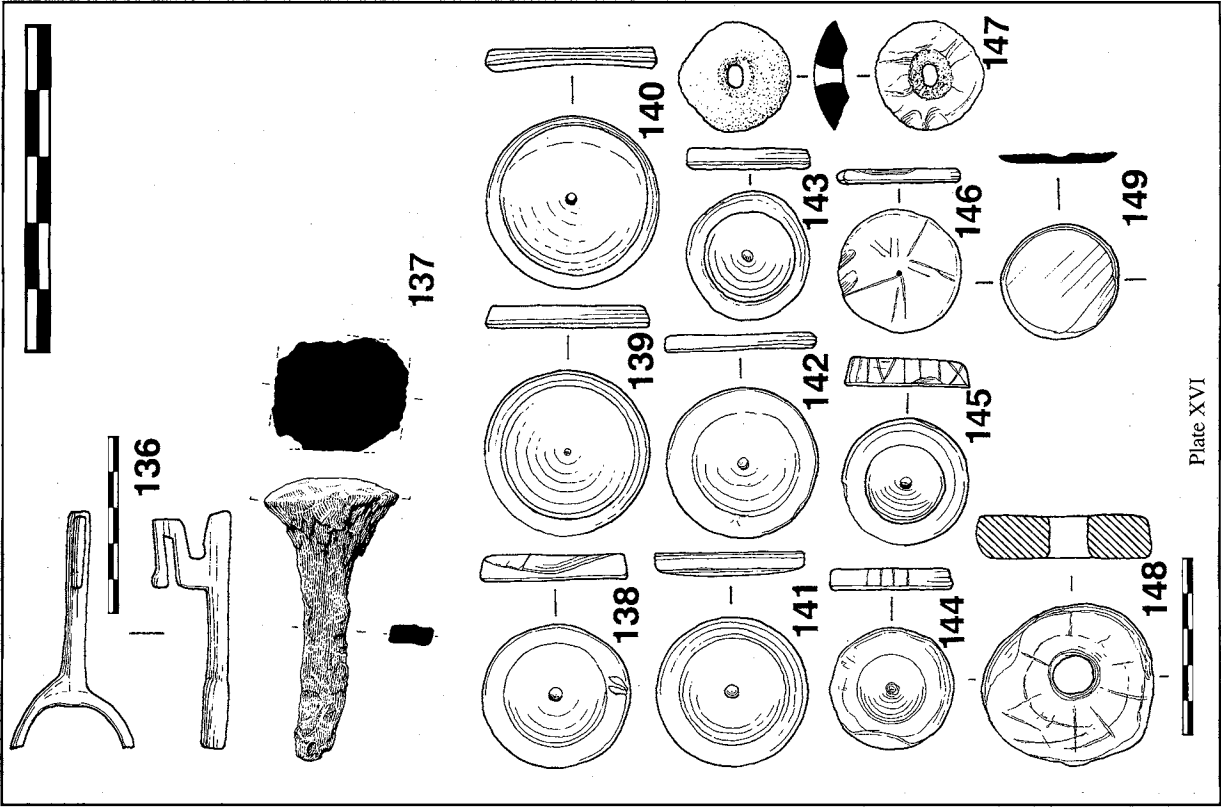


Plate XVI

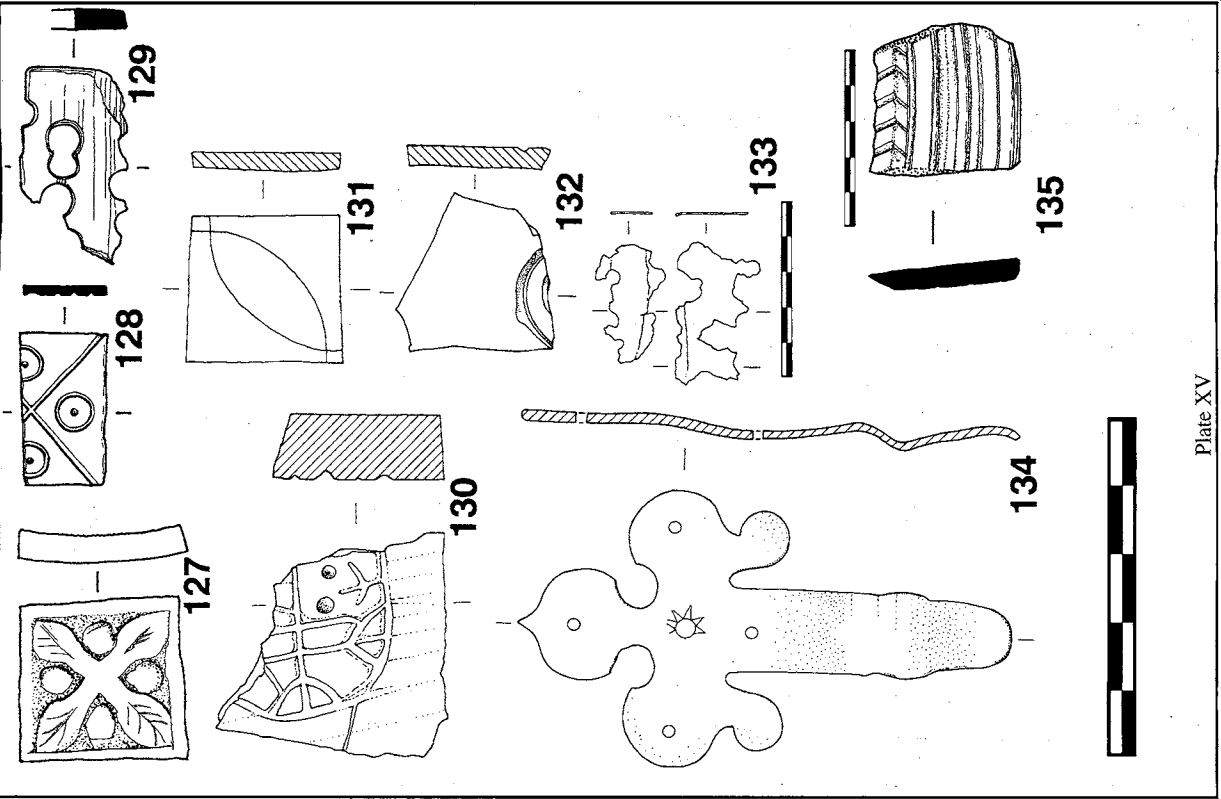
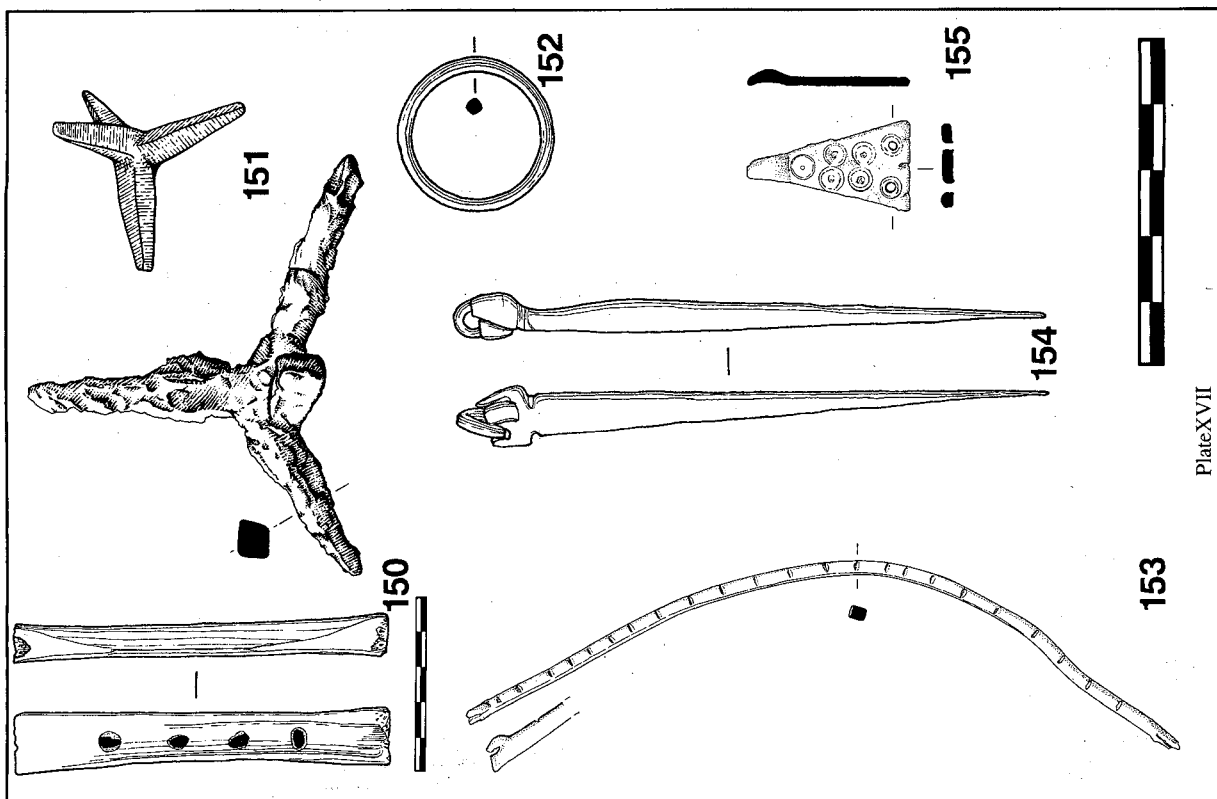
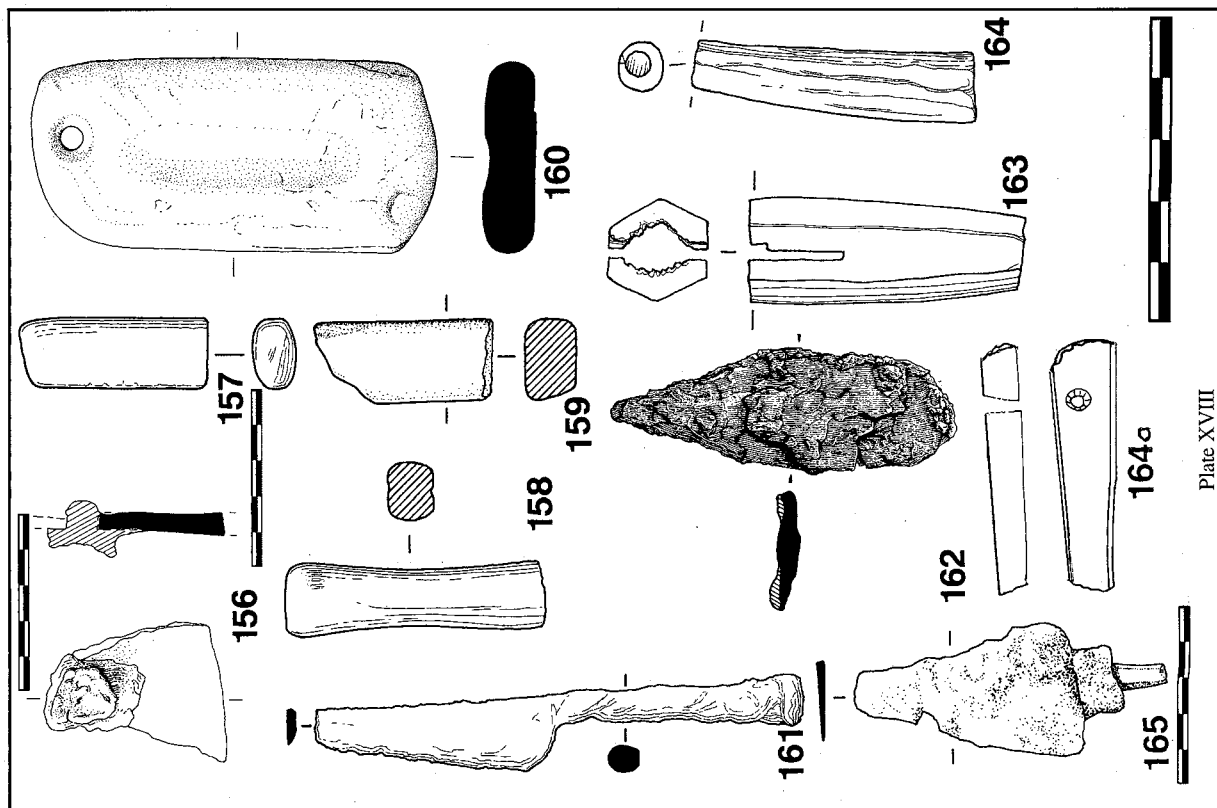
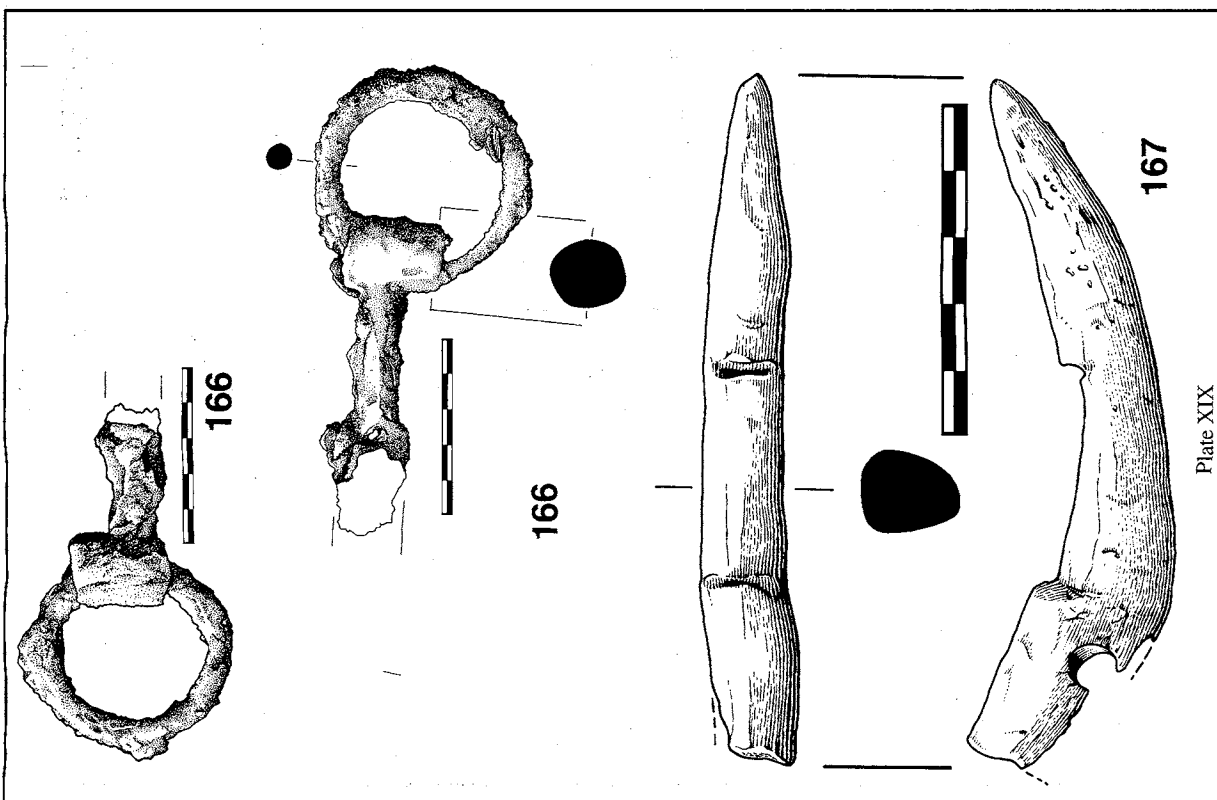
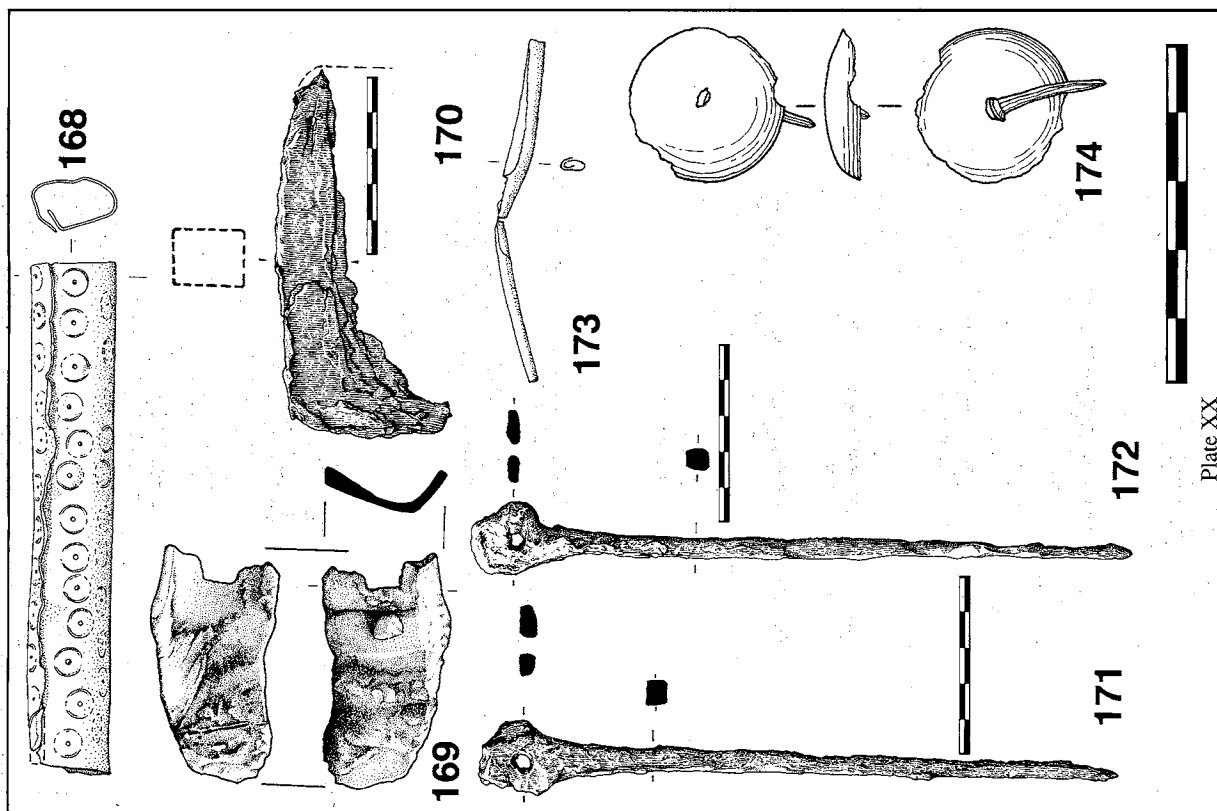
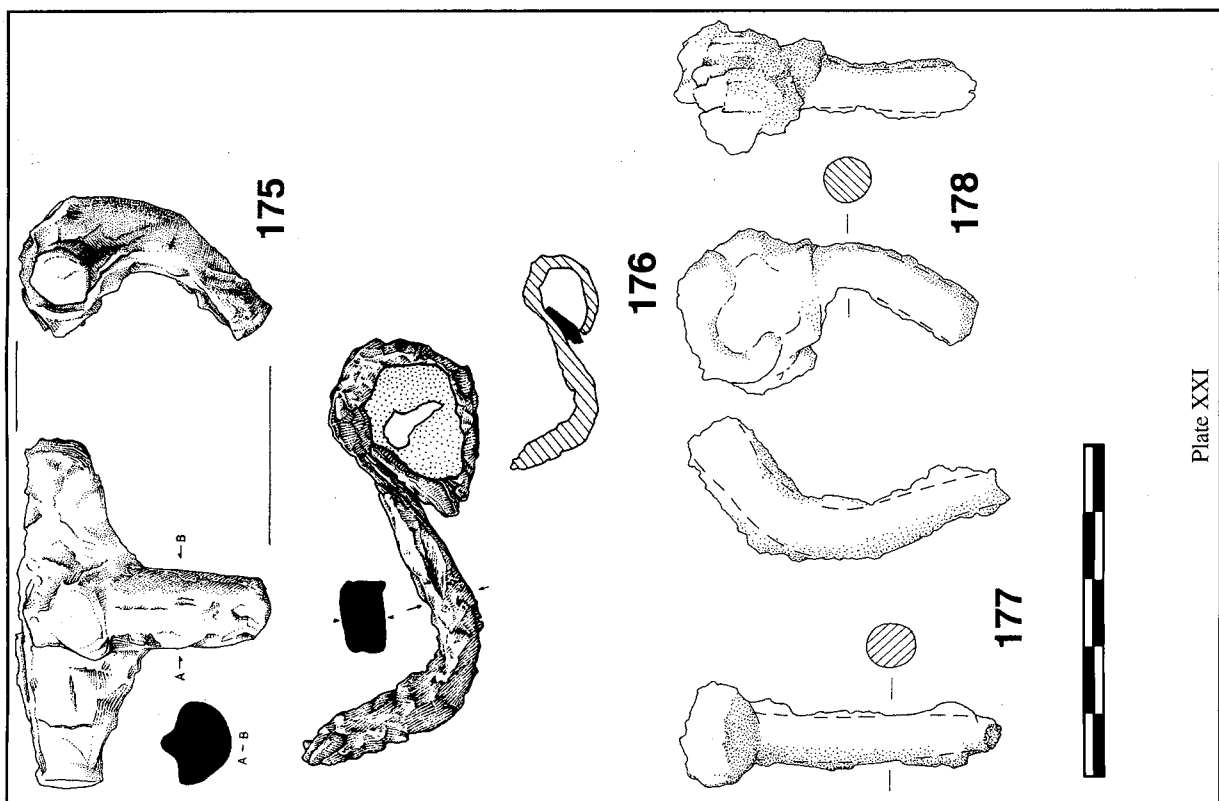
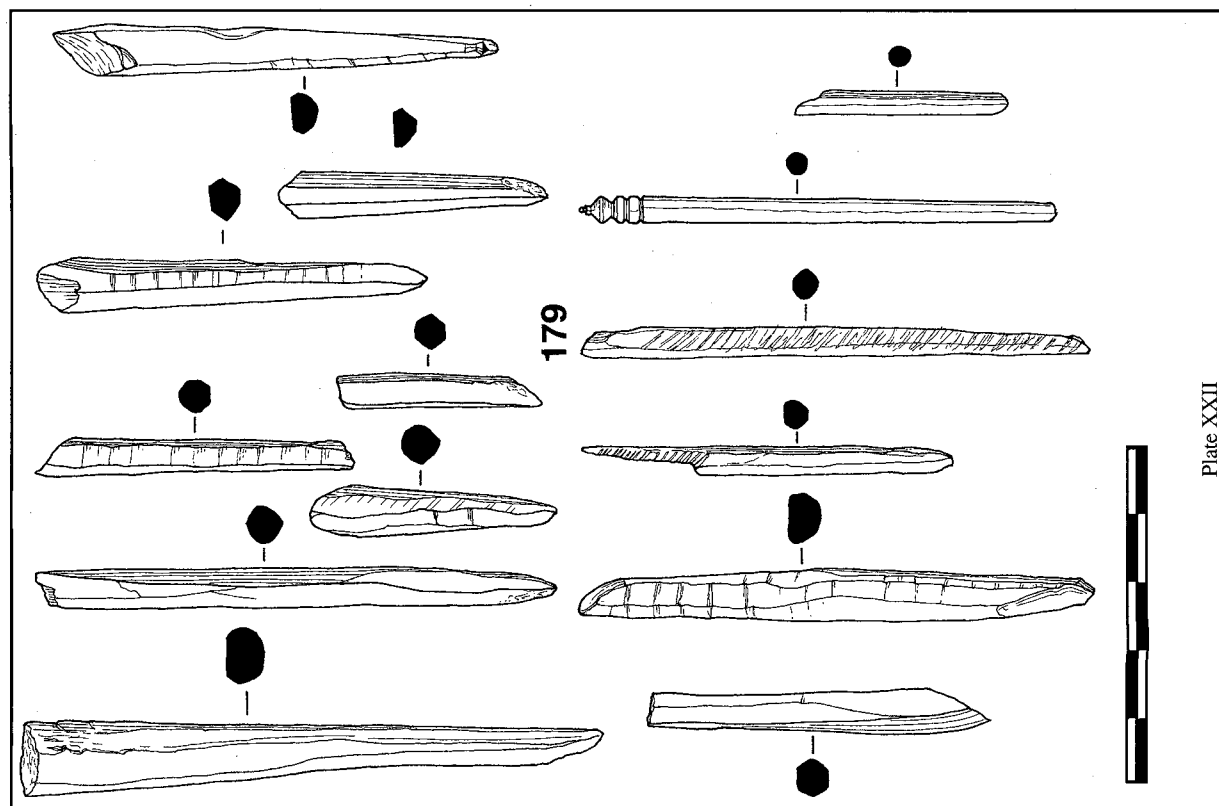
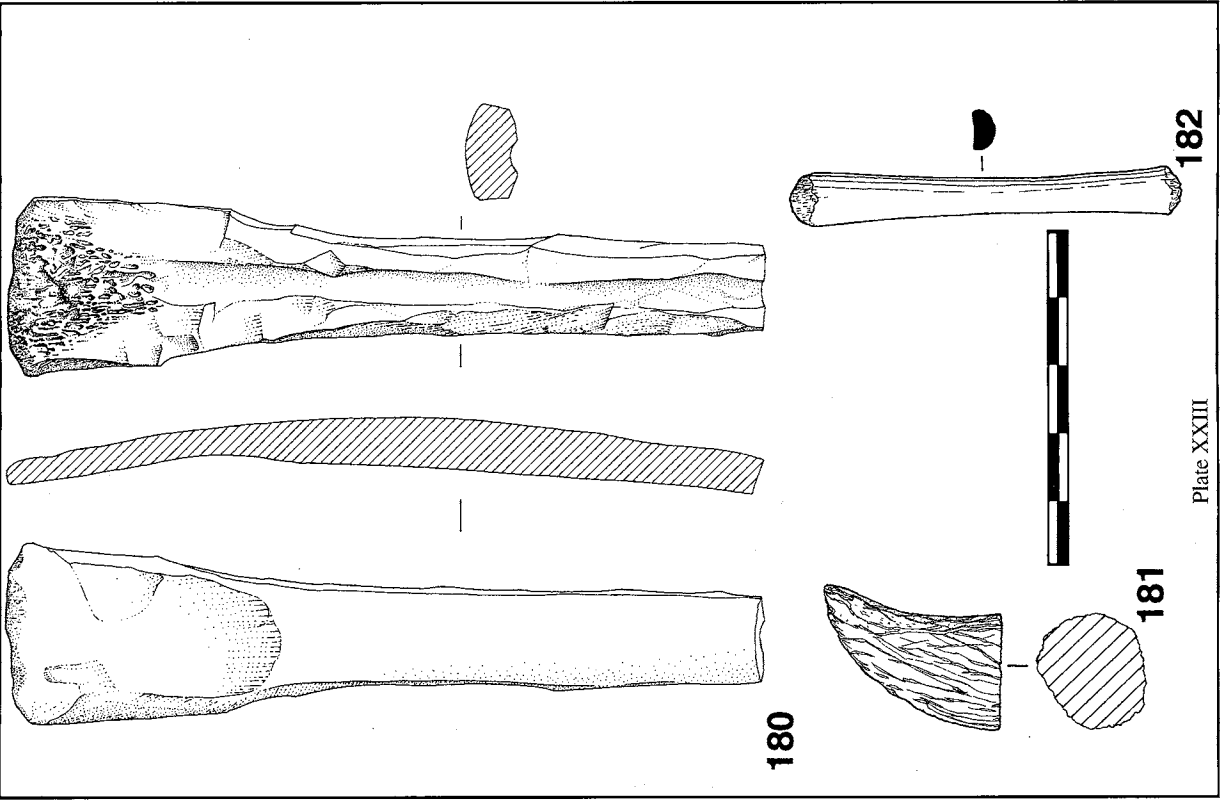
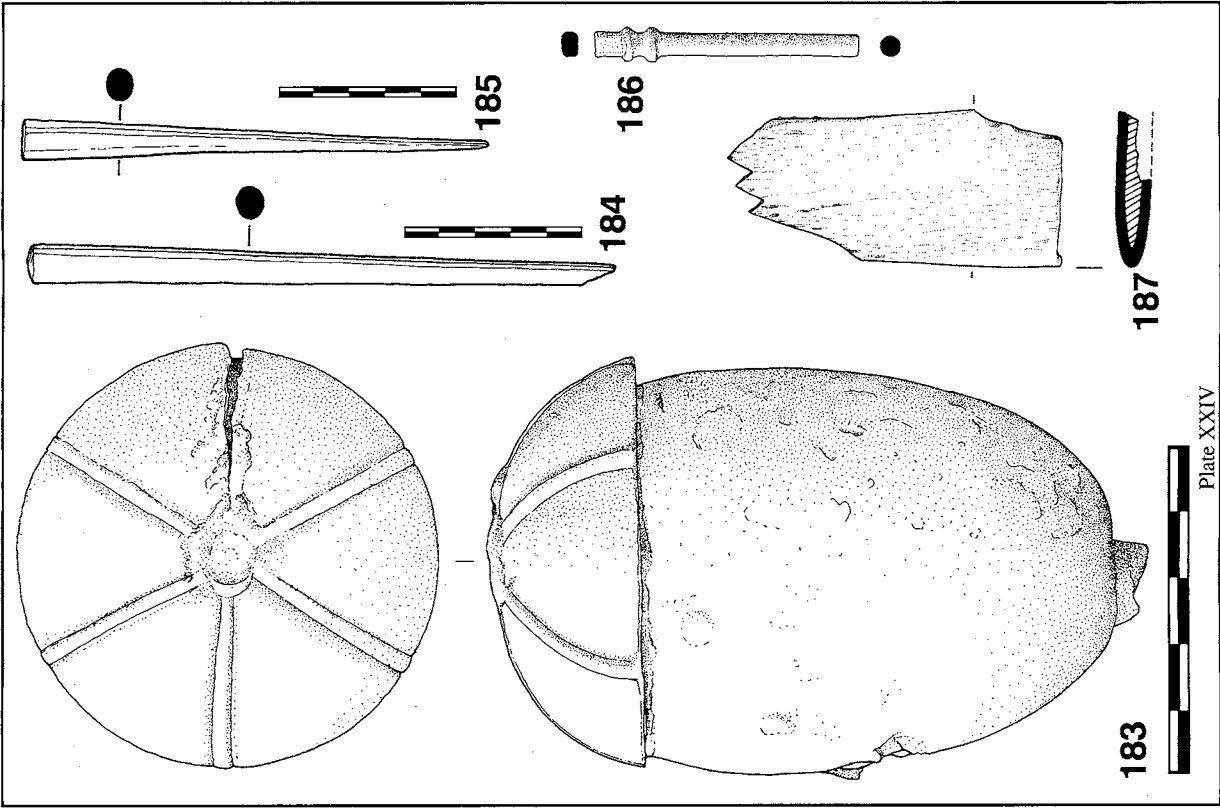


Plate XV











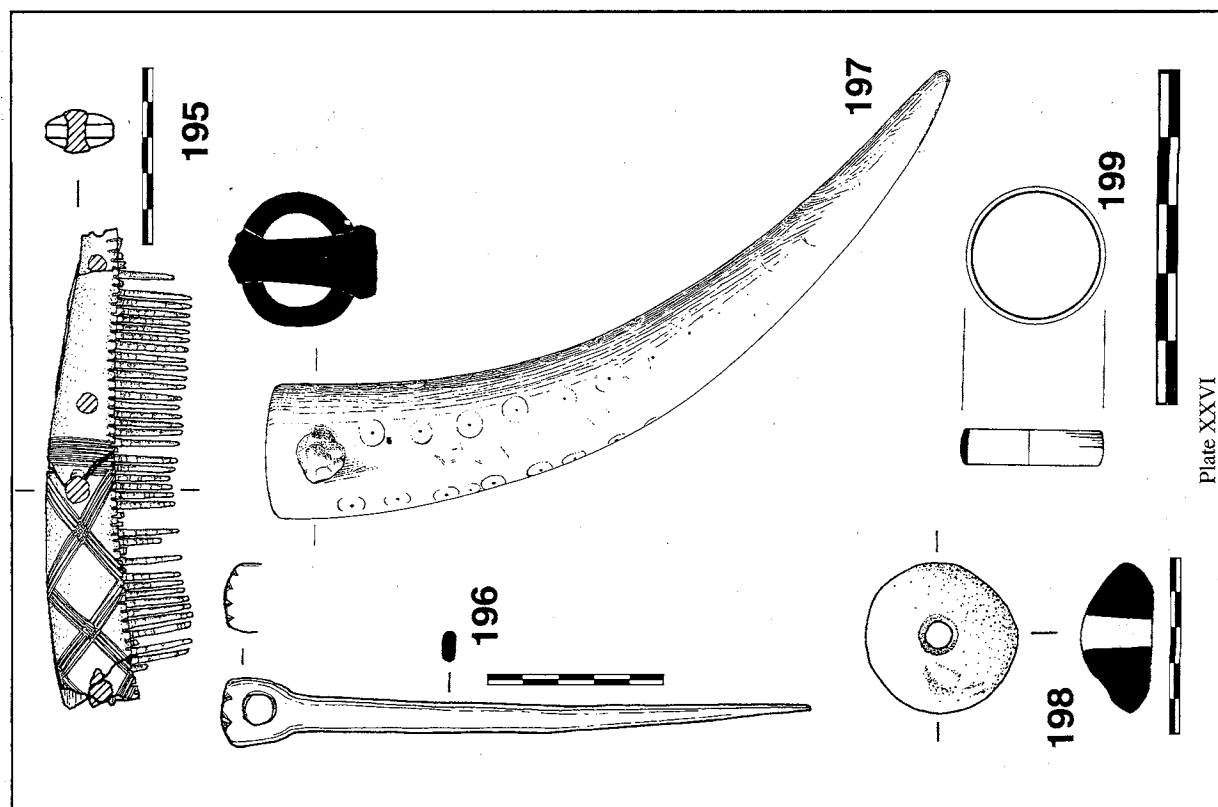


Plate XXVI

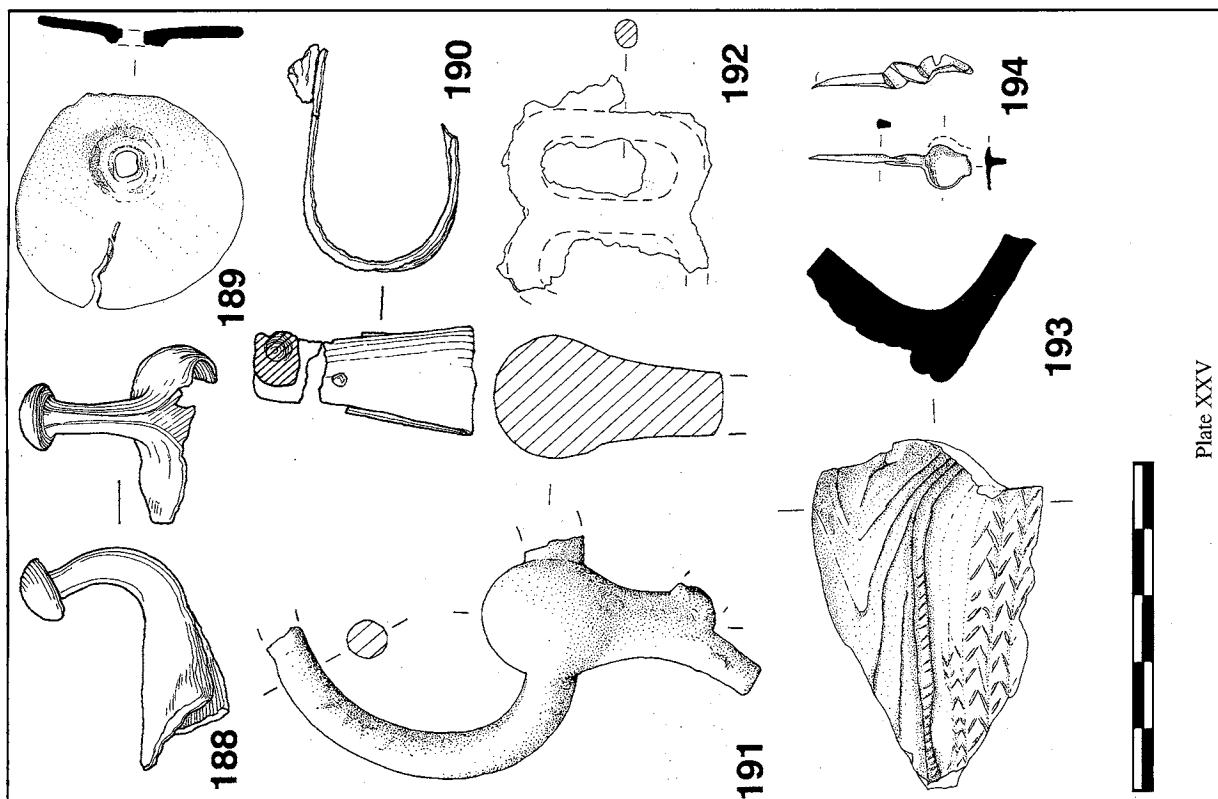


Plate XXV

Plate XXVIII

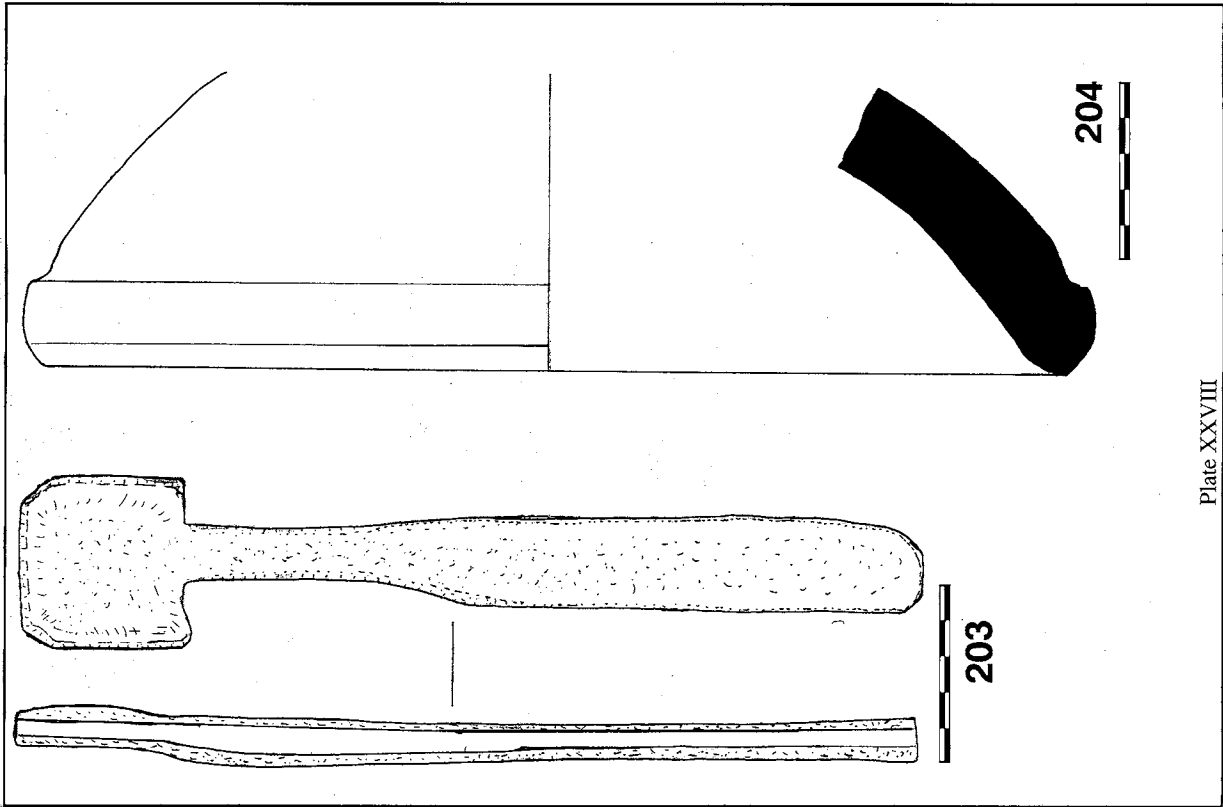
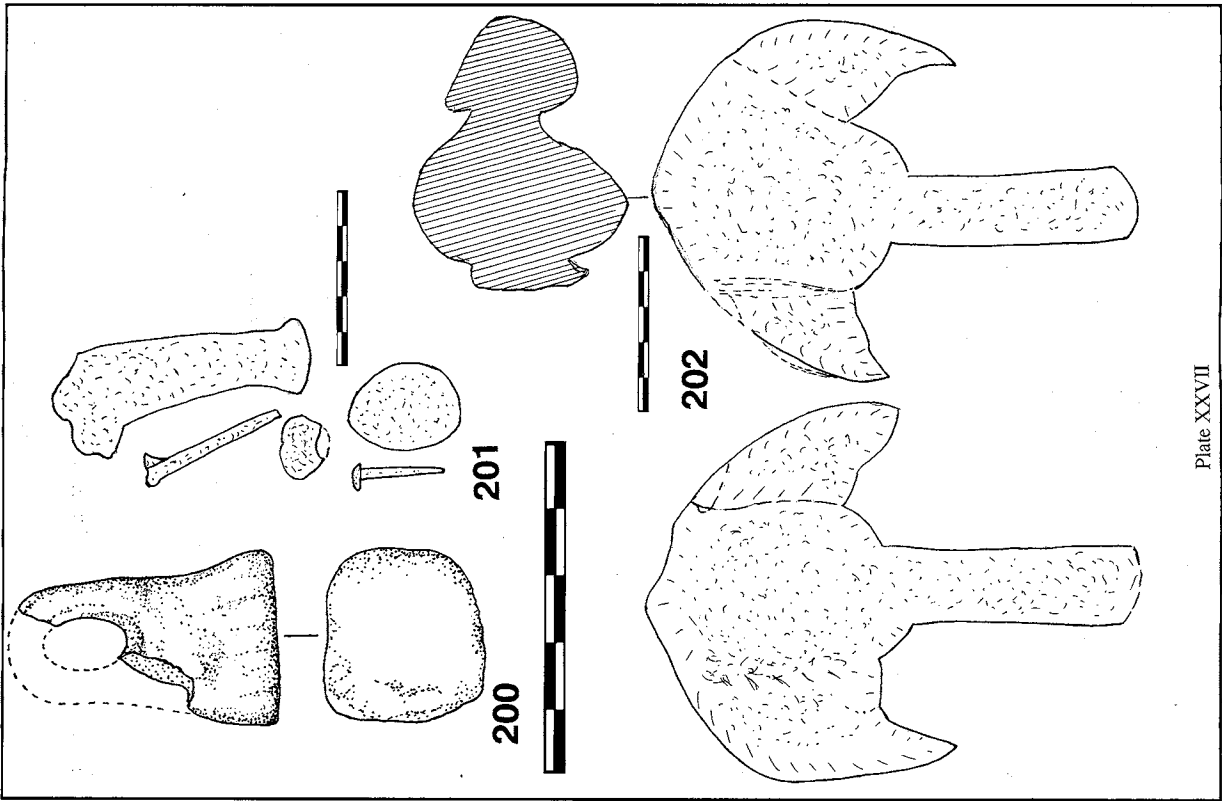


Plate XXVII





---

## Proceedings Volume LXXXVIII, 1999

Price £12.50 for members, £14.50 for non-members

---

### Contents

Preface	4
Editorial	6
Acknowledgements	7
Summary	8
Chapters	
1. Introduction	9
2. The Iron Age Settlement	17
3. First Century Settlement and a Possible Roman Fort	27
4. Civil Settlement of the 2nd Century	35
5. The Third and Early Fourth Centuries	49
6. The Fourth Century Walled Town	59
7. Discussion and Conclusions. A Taylor	75
Appendices	
I. The Small Finds. F Gardiner, M Henig and J Pullinger	85
II. The Glass. J Liversidge	107
III. The Coins. M F Sekulla, G R Thoday and P de Jersey	109
IV. The Amphorae. J Pullinger	113
V. The Iron Age pottery. R A H Farrar and M R Hull, J Pullinger	117
VI. Samian Ware. B Dickinson	131
VII. The Roman Pottery. M R Hull and J Pullinger	141
VIII Roman Pottery Illustrations. J Pullinger, B C Burnham, A Rotherham and P White	145
IX The Mortaria. K Hartley	201
X. Roman pottery. M R Hull	209
XI. Building materials. J Pullinger and F Weatherhead	251
XII. Summary of excavations post-1988. C Evans	255
Bibliography	
Index	