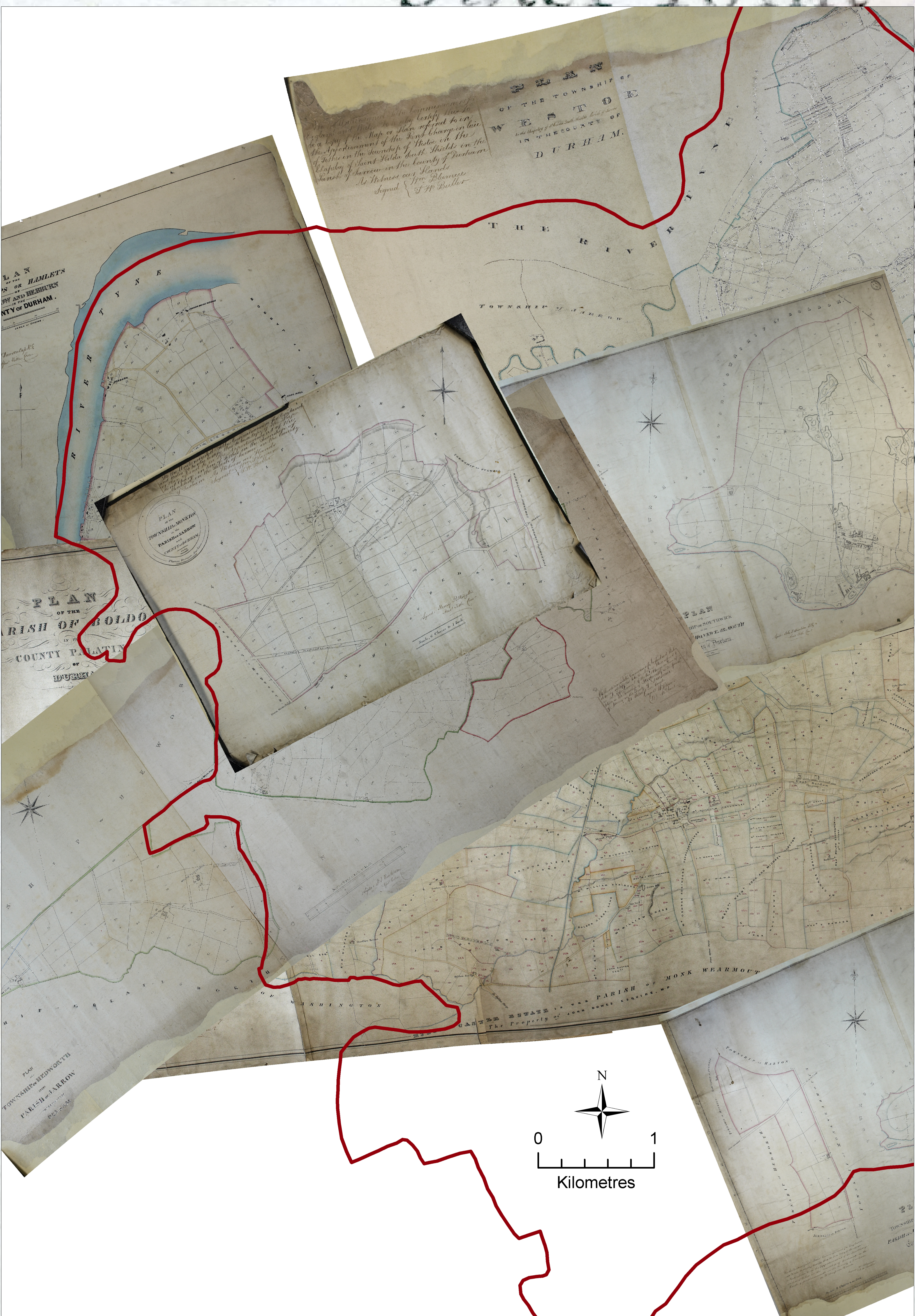


*‘exploring the wider landscape and hinterland of these extraordinary sites.’*

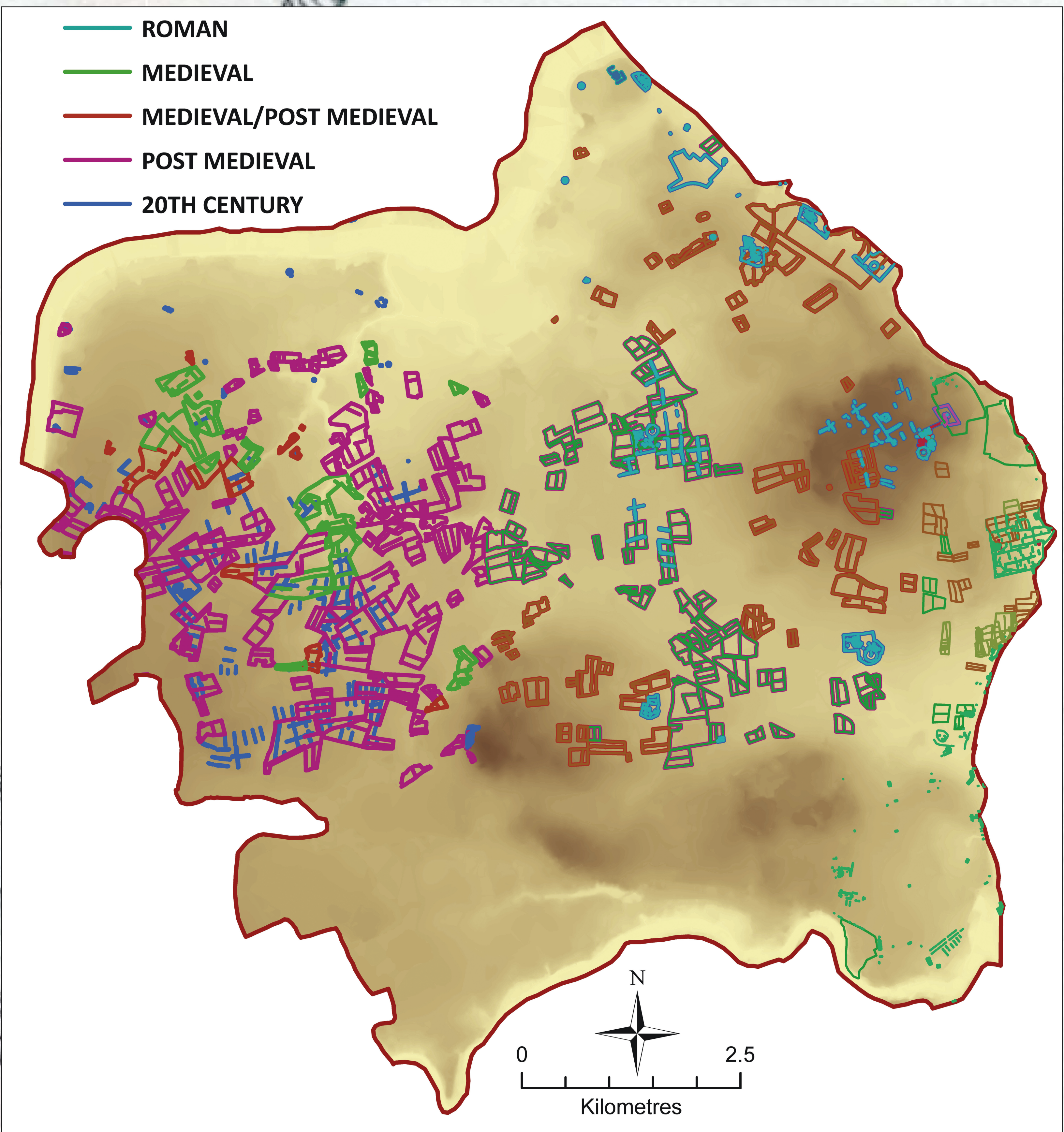
The current project, funded by English Heritage, is designed to explore the wider landscape and hinterland of these extraordinary sites and to explore the impact of the Anglo-Saxon monastic foundation and its archaeological legacy across time. At a regional level (between the Rivers Tyne and Wear) we are integrating relevant sources including documents, place-names and analysis of historic maps with evidence from aerial photographs and archaeological databases. In the environs of the monasteries we have undertaken combined geo-prospection using a full range of geophysical techniques and we are complementing this fieldwork with geoarchaeological and palaeoenvironmental surveys. At the most detailed level we are creating new surveys of the two churches with surviving early medieval fabric. By placing the monasteries in the context of their local landscape, we hope to view in close detail the changes wrought by their impact and thus at a much wider level understand more fully, the important role and value of these types of settlement in the dramatic changes and political dynamics of this period across North West Europe



composite view of tithe maps from zone 1



rectified RAF aerial photographs from 1947 with modern roads overlaid



Hadrian's Wall National Mapping Program and Rapid Coastal Zone Survey data

