

ART. XIV.—*A Tumulus in Mecklin Park, Santon Bridge.*

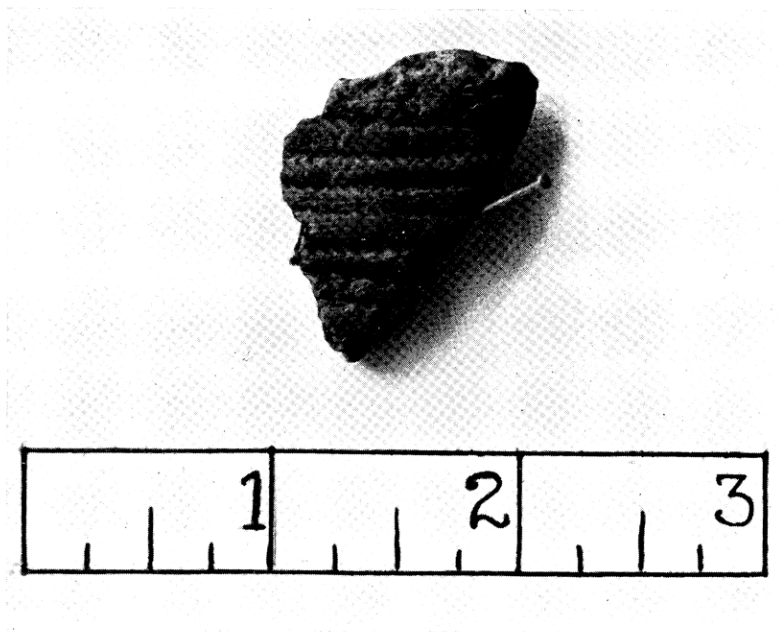
By J. E. SPENCE, M.B., D.P.H.

*Read at Harrogate, September 16th, 1936.*

IN July 1936 a tumulus situated on the ridge of the col between the Wastwater Screes and Irton Pike was explored. The tumulus, which is almost circular with an overall diameter of 30 to 32 feet, is situated on the sky-line and its centre is three feet above the level of the surrounding ground. A trench four feet wide was cut through the mound from the South-West to the North-East. Round the mound was a ring of large granite boulders forming a kerb with a diameter of 27 feet. The outer part of the tumulus was constructed of granite boulders irregularly laid, but the centre was more carefully and solidly constructed and over an area about eight feet in diameter it consisted of three courses of carefully pitched boulders of granite with a few of Borrowdale stone.

The stones forming the kerb had been placed on the natural surface of the ground, but towards the centre of the tumulus the ground had been excavated to a maximum depth of nine inches before the mound had been built.

Four feet from the centre on the North-East side, at a depth of two feet from the surface, a small shard of red pottery one and a quarter inches long, one inch wide and one-fifth of an inch thick, was found. It was lying between two stones just outside the more compact central area, and, as no other fragment of pottery was found, it may possibly have been dropped on the surface and later worked its way between the stones. The fragment, which shows six rows of fine cord impressions, has been examined by Mr. G. C. Dunning, F.S.A., to whom I am indebted for the drawing of it. As the fragment is so small a definite opinion could not be expressed as to its form. It might



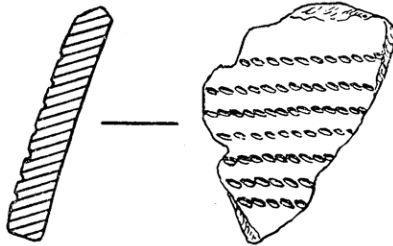
Beaker Shard, from tumulus in Mecklin Park.

*Photo. by J. E. Spence.*

*Facing p. 104.*

belong to either the "A-C" group or to the "B" group of beakers, although the fine corded lines are more likely to occur on the latter. It was also examined by Mr. W. F. Grimes, M.A., F.S.A., who also thought that the corded lines suggest the "B" type of beaker.

During the excavation of the central portion of the tumulus charcoal was found in small quantities from eighteen inches below the surface down to the level of undisturbed soil. It was spread over a wide area about seven feet in diameter, but in no part of the excavation was it found in any quantity, nor did the total amount appear to be sufficient for the cremation of a human being.



Beaker Shard found in tumulus in Mecklin Park, Irton Pike, opened 1936.

The charcoal was small, apparently derived from brushwood, and along with it part of a charred hazel nut was found. There was no trace of calcined bones with the charcoal but four quartz pebbles were found in the central part of the mound. A flint chip measuring three-quarters of an inch by nine-sixteenths and one quarter of an inch thick was found in the outer part of the central area.

Owing to lack of time the tumulus was not completely excavated and it is hoped that its exploration will be completed next year.

I am indebted to Miss Walker for permission to explore the site, to Miss M. C. Fair for her assistance in arranging for its exploration and to the Hon. Marjorie and Kathleen Cross and Mr. and Mrs. Warriner for their assistance in the excavation.