

PROJECT <b>WP13</b>	TRENCH <b>3</b>	CONTEXT RECORD FORM The Whitworth Park Community Archaeology and History Project	INITIAL + DATE <b>KF 5/7/13</b>	CONTEXT <b>3022</b>
EXCAVATOR	SUPERVISOR	*** CUT ***	SECTION	PLAN

FIELD INTERPRETATION		PROVISIONAL DATE
CONTEXT DESCRIPTION		CONTINUES
PLAN		CLARITY OF HORIZON <b>sharp</b>
SIDES		ORIENTATION <del>SW</del> <b>N</b>
BASE		AXIS <b>EW</b>
LENGTH		RECUT
WIDTH/DIAM. <b>.58</b>		PHOTO (Slide) <b>BW 1.6-8 ; G1 1.7-9</b>
DEPTH/HEIGHT <b>Unknown</b>		PHOTO (Digital) <b>11-13</b>
CONTEXT FORMATION (Taphonomy)	CONTEXT FORMATION (Anthropogenic) <b>Ditch/Foundation fill, change of materials</b>	HOW WAS THE CONTEXT FORMED? (Intentional? The process/procedure) <b>Context forms the interface between two different fill materials.</b>
Stratigraphical relationships	Physical relationships	WHY IS THE DEPOSIT LIKE THIS? (Look up from the cut and consider why here, why now. What process made it happen)
	Overlies	<b>3019</b> is solid clayey material so horizon between <b>3019</b> and <b>3007</b> (friable black ashey layer) is clear + sharp.
	Underlies <b>3003</b>	
	Fill of	
This context <b>3022</b>	Cuts <b>3007; 3019</b>	
	Cut by	
	Continues	
	Same as	
COORDINATES	Within	
	Abuts <b>3007; 3012</b>	
GRID REF	Abutted by	

WHAT WAS THIS CUT? (context narrative- what kinds of practice does it relate to? look out from the cut and consider the story)

**This cut was formed when the foundation of the bandstand **3009** was being filled. The cut represents the point at which 2 different materials were dumped together.**

CONFIDENCE IN EXCAVATION 1 ↔ 5 <b>5</b>	CONFIDENCE IN INTERPRETATION 1 ↔ 5 <b>5</b>
---	---

PRE-EX: initial thoughts, notes and relevant discussion. (complete following pre-ex plan).

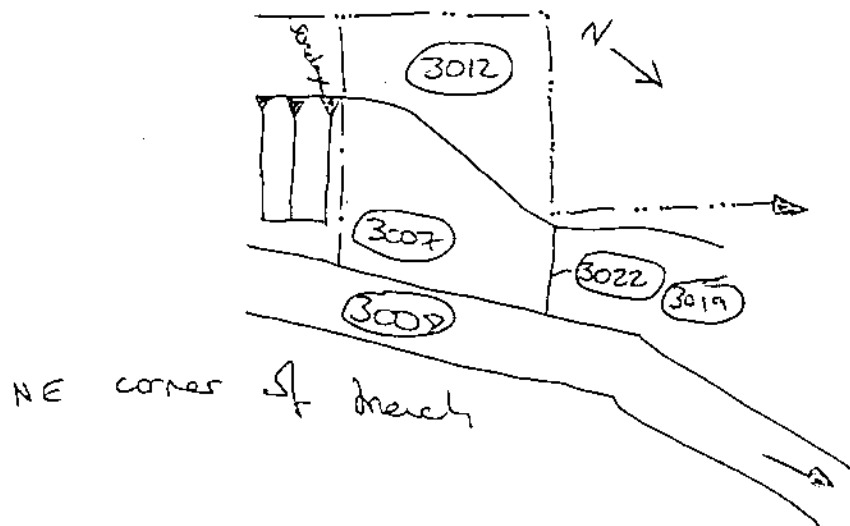
Interface between 2 deposits is clear and indicates that the builders were using different materials at the same time to fill the foundation ditch.

HALF SECTION: consideration at this stage. (complete following section drawing).

POST-EX: concluding thoughts. (complete following post-ex plan).

Shop separation btw middle way - black and yellow of 2019.

SKETCH AND ANY FURTHER DISCUSSION



PROJECT <b>WP13</b>	TRENCH <b>3</b>	CONTEXT RECORD FORM The Whitworth Park Community Archaeology and History Project	INITIAL + DATE <b>12/7/13</b>	CONTEXT <b>3025</b>
EXCAVATOR <b>KF</b>	SUPERVISOR <b>KF</b>	*** CUT ***	SECTION	PLAN

## FIELD INTERPRETATION

## PROVISIONAL DATE

CONTEXT DESCRIPTION		CONTINUES
PLAN		CLARITY OF HORIZON <i>under at first</i>
SIDES		ORIENTATION <i>W → E</i>
BASE		AXIS <i>NS</i>
LENGTH <i>68cm</i>		RECUT
WIDTH/DIAM. <i>Sharp</i>		PHOTO (Slide)
DEPTH/HEIGHT		PHOTO (Digital)
CONTEXT FORMATION (Taphonomy)	CONTEXT FORMATION (Anthropogenic) <i>foundation fill</i>	HOW WAS THE CONTEXT FORMED? (Intentional? The process/procedure) <i>Context forms the cut line between the yellow <b>3019</b> fill and a grey <b>3024</b></i>
Stratigraphical relationships	Physical relationships	WHY IS THE DEPOSIT LIKE THIS? (Look up from the cut and consider why here, why now. What process made it happen)
	Overlies	<i>Dep cut is like this due to filling of foundation trench → deposits <b>3019</b> and <b>3024</b> were dumped side by side.</i>
	Underlies	
	Fill of	
This context	Cuts <i>3019 3024</i>	
	Cut by	
	Continues	
	Same as <i>3022, 3033</i>	
COORDINATES	Within	
	Abuts	
GRID REF	Abutted by	

WHAT WAS THIS CUT (context narrative- what kinds of practice does it relate to? look out from the cut and consider the story)

*Cut relates to practice of filling bandstand foundation by dumping.*

CONFIDENCE IN EXCAVATION

1 ↔ 5

4

CONFIDENCE IN INTERPRETATION

1 ↔ 5

5

PRE-EX: initial thoughts, notes and relevant discussion. (complete following pre-ex plan).

3024 is different to 3019, so 3025 marks cut.

HALF SECTION: consideration at this stage. (complete following section drawing).

POST-EX: concluding thoughts. (complete following post-ex plan).

SKETCH AND ANY FURTHER DISCUSSION

PROJECT <b>WP13</b>	TRENCH <b>3</b>	CONTEXT RECORD FORM The Whitworth Park Community Archaeology and History Project	INITIAL + DATE <b>KF 12/7</b>	CONTEXT <b>3033</b>
EXCAVATOR <b>KF, AB</b>	SUPERVISOR <b>KF</b>	<b>*** CUT ***</b>	SECTION	PLAN <b>51</b>

## FIELD INTERPRETATION

## PROVISIONAL DATE

CONTEXT DESCRIPTION		CONTINUES
PLAN <b>51</b>		CLARITY OF HORIZON <b>unclear (at points)</b>
SIDES		ORIENTATION
BASE		AXIS <b>E-W</b>
LENGTH <b>0.36</b>		RECUT
WIDTH/DIAM. <b>-</b>		PHOTO (Slide)
DEPTH/HEIGHT		PHOTO (Digital)
CONTEXT FORMATION (Taphonomy) <b>foundation R11</b>	CONTEXT FORMATION (Anthropogenic) <b>Roundabout R11/5</b>	HOW WAS THE CONTEXT FORMED? (Intentional? The process/procedure) <b>Formed as horizon between (3007) + (3029)</b>
Stratigraphical relationships	Physical relationships	WHY IS THE DEPOSIT LIKE THIS? (Look up from the cut and consider why here, why now. What process made it happen)
	Overlies	<b>Deposit forms the horizon between two of the bandstands' Roundabout R11/5 (exterior)</b>
	Underlies	
	Fill of	
This context <b>3033</b>	Cuts <b>3007 3029</b>	
	Cut by	
	Continues	
	Same as	
COORDINATES	Within	
	Abuts	
GRID REF	Abutted by	

WHAT WAS THIS CUT (context narrative- what kinds of practice does it relate to? look out from the cut and consider the story)

**horizon, bandstand Roundabout (exterior)**

CONFIDENCE IN EXCAVATION 1 ↔ 5 <b>4</b>	CONFIDENCE IN INTERPRETATION 1 ↔ 5 <b>4</b>
---	---

PRE-EX: initial thoughts, notes and relevant discussion. (complete following pre-ex plan).

HALF SECTION: consideration at this stage. (complete following section drawing).

POST-EX: concluding thoughts. (complete following post-ex plan).

SKETCH AND ANY FURTHER DISCUSSION

PROJECT <b>WP13</b>	TRENCH <b>3</b>	CONTEXT RECORD FORM The Whitworth Park Community Archaeology and History Project	INITIAL + DATE <b>12/7</b>	CONTEXT <b>3035</b>
EXCAVATOR	SUPERVISOR	*** CUT ***	SECTION	PLAN <b>51</b>

FIELD INTERPRETATION PROVISIONAL DATE

CONTEXT DESCRIPTION		CONTINUES
PLAN <b>51</b>		CLARITY OF HORIZON
SIDES		ORIENTATION
BASE		AXIS <b>NE - SW</b>
LENGTH <b>0.64</b>		RECUT
WIDTH/DIAM. <b>8</b>		PHOTO (Slide)
DEPTH/HEIGHT		PHOTO (Digital)
CONTEXT FORMATION (Taphonomy)	CONTEXT FORMATION (Anthropogenic) <b>Foundation</b>	HOW WAS THE CONTEXT FORMED? (Intentional? The process/procedure) <b>Change of materials</b>
Stratigraphical relationships	Physical relationships	WHY IS THE DEPOSIT LIKE THIS? (Look up from the cut and consider why here, why now. What process made it happen)
	Overlies	<b>Deposit forms horizon between two different interior Foundation walls.</b>
	Underlies <b>3003</b>	
	Fill of	
This context <b>3035</b>	Cuts <b>3031, 3017</b>	
	Cut by	
	Continues	
	Same as	
COORDINATES	Within	
	Abuts	
GRID REF	Abutted by	

WHAT WAS THIS CUT (context narrative- what kinds of practice does it relate to? look out from the cut and consider the story)

**Cut is horizon between two Foundation materials  
(same not damage)**

CONFIDENCE IN EXCAVATION	1 ↔ 5 <b>4</b>	CONFIDENCE IN INTERPRETATION	1 ↔ 5 <b>5</b>
--------------------------	----------------	------------------------------	----------------

PRE-EX: initial thoughts, notes and relevant discussion. (complete following pre-ex plan).

HALF SECTION: consideration at this stage. (complete following section drawing).

POST-EX: concluding thoughts. (complete following post-ex plan).

SKETCH AND ANY FURTHER DISCUSSION



PROJECT <b>WP13</b>	TRENCH <b>3</b>	CONTEXT RECORD FORM The Whitworth Park Community Archaeology and History Project	INITIAL + DATE <b>12/7</b>	CONTEXT <b>3034</b>
EXCAVATOR <b>KF, SJ</b>	SUPERVISOR <b>KF</b>	*** CUT ***	SECTION	PLAN <b>51'</b>

## FIELD INTERPRETATION

## PROVISIONAL DATE

CONTEXT DESCRIPTION		CONTINUES
PLAN <b>51</b>		CLARITY OF HORIZON
SIDES		ORIENTATION
BASE		AXIS <b>N-S</b>
LENGTH <b>1.9</b>		RECUT
WIDTH/DIAM.		PHOTO (Slide)
DEPTH/HEIGHT <b>/</b>		PHOTO (Digital)
CONTEXT FORMATION (Taphonomy)	CONTEXT FORMATION (Anthropogenic) <b>foundation fill</b>	HOW WAS THE CONTEXT FORMED? (Intentional? The process/procedure) <b>Foundation fill, inter- change of materials</b>
Stratigraphical relationships	Physical relationships	WHY IS THE DEPOSIT LIKE THIS? (Look up from the cut and consider why here, why now. What process made it happen)
	Overlies	<b>Deposit forms horizon between two different fills.</b>
	Underlies	
	Fill of	
This context <b>3034</b>	Cuts <b>3023, 3032</b>	
	Cut by	
	Continues	
	Same as	
	Within	
COORDINATES	Abuts	
GRID REF	Abutted by	

WHAT WAS THIS CUT (context narrative- what kinds of practice does it relate to? look out from the cut and consider the story)

**Cut forms horizon between two foundation fill materials.**

CONFIDENCE IN EXCAVATION 1 ↔ 5 **5**CONFIDENCE IN INTERPRETATION 1 ↔ 5 **5**

PRE-EX: initial thoughts, notes and relevant discussion. (complete following pre-ex plan).

HALF SECTION: consideration at this stage. (complete following section drawing).

POST-EX: concluding thoughts. (complete following post-ex plan).

SKETCH AND ANY FURTHER DISCUSSION