

PROJECT WP13	TRENCH 3	CONTEXT RECORD FORM The Whitworth Park Community Archaeology and History Project	INITIAL + DATE KF 3/7/13	CONTEXT 3017
EXCAVATOR SJ, HA	SUPERVISOR KF	*** DEPOSIT ***	SECTION	PLAN

FIELD INTERPRETATION		PROVISIONAL DATE		
CONTEXT DESCRIPTION		CONTINUES	FINDS Ceramic ; glass	
COLOUR Grey Brown		CLARITY OF HORIZON Blind Sharp.	SAMPLES mortar	
COMPOSITION Silty clay		Stone size + shape 3-M Pebbles	% of context 5% 5%	
COMPACTION Compacted		Stone % + sorting >10 %	Reason Mortar Inclusions	
LENGTH 1.65		Charcoal %	Sieved? NO	
WIDTH/DIAM. 79		Roots 5% small tree roots	PHOTO (Slide) 1.1-1.3 B&W / 1.7-9 col.	
DEPTH/HEIGHT		Other inclusions >20 % Brick/mortar.	PHOTO (Digital) 11-13	
CONTEXT FORMATION (Taphonomy) Packing / fill		CONTEXT FORMATION (Anthropogenic) Bairdstand base	HOW WAS THE CONTEXT FORMED? (Intentional? The process/procedure) Context forms upper layer of interior packing of bairdstand. Intentional	
Stratigraphical relationships		Physical relationships	WHY IS THE DEPOSIT LIKE THIS? (Look up from the deposit and consider why here, why now. What process made it happen)	
		Overlies 3016	Deposit overlies 3016, and pulls off clearly by layer. Deposit is part of man-made fill of trench. Some charcoal scatter 3007 away layer.	
		Underlies 3011		
		Fill of		
This context 3017		Cuts		
		Cut by		
		Continues		
		Same as 3016 in parts		
COORDINATES		Within		
		Abuts 3014		
GRID REF		Abutted by		
WHAT WAS THIS DEPOSIT (context narrative- what kinds of practice does it relate to? look out from the deposit and consider the story)				
<p>This context forms part of the surface / fill that was laid down over the bairdstand's interior foundation trench. It possibly forms part of the fill of a circular cut. Some clay lump inclusions similar to 3016</p>				
CONFIDENCE IN EXCAVATION 1 → 5 4			CONFIDENCE IN INTERPRETATION 1 → 5 3	

PRE-EX: initial thoughts, notes and relevant discussion. (complete following pre-ex plan).

Loose brown soil was clearly overlaying a yellow-brown plastic type layer ³⁰¹⁶ covering ~~the~~ a black ~~discreetly~~ layer. Decided to clear back overlying layers to clear area to E of wall.

HALF SECTION: consideration at this stage. (complete following section drawing).

POST-EX: concluding thoughts. (complete following post-ex plan).

Contact forms thick layer to the interior of bandstand, immediately abutting upper courses of foundation wall

SKETCH AND ANY FURTHER DISCUSSION



PROJECT WP13	TRENCH 3	CONTEXT RECORD FORM The Whitworth Park Community Archaeology and History Project	INITIAL + DATE 3/7/13	CONTEXT 3018
EXCAVATOR RS, AS	SUPERVISOR KF	*** DEPOSIT ***	SECTION	PLAN

FIELD INTERPRETATION PROVISIONAL DATE

CONTEXT DESCRIPTION	CONTINUES N-S	FINDS Wood, ceramic, bone
COLOUR Black-Grey	CLARITY OF HORIZON Sharp	SAMPLES
COMPOSITION friable sand	Stone size + shape Medium regular	% of context
COMPACTION loose	Stone % + sorting Medium regular, <10%	Reason
LENGTH 1.55	Charcoal % 90%	Sieved?
WIDTH/DIAM. 0.69	Roots	PHOTO (Slide)
DEPTH/HEIGHT	Other inclusions Ferrous, slate	PHOTO (Digital)

CONTEXT FORMATION (Taphonomy) Ferrous, post-industrial Waste	CONTEXT FORMATION / (Anthropogenic) Interior fill of bandstand Bandstand	HOW WAS THE CONTEXT FORMED? (Intentional? The process/procedure) Fill of bandstand - packed in with interior fill
---	--	---

Stratigraphical relationships	Physical relationships	WHY IS THE DEPOSIT LIKE THIS? (Look up from the deposit and consider why here, why now. What process made it happen) Deposit is reused, burnt material, innocuous across the site. Deposit forms part of the bandstand fill.
	Overlies 3026	
	Underlies 3016	
	Fill of	
This context	Cuts	
	Cut by 3014	
	Continues	
	Same as (3007) (3023)	
COORDINATES	Within	
	Abuts (3008)	
GRID REF	Abutted by	

WHAT WAS THIS DEPOSIT (context narrative- what kinds of practice does it relate to? look out from the deposit and consider the story)
This deposit formed the interior fill of the bandstand Bandstand

CONFIDENCE IN EXCAVATION 1 ↔ 5 5	CONFIDENCE IN INTERPRETATION 1 ↔ 5 5
---	---

PRE-EX: initial thoughts, notes and relevant discussion. (complete following pre-ex plan).

layer looks as though it forms a clear layer underlying 3016 and is clearly visible in section.

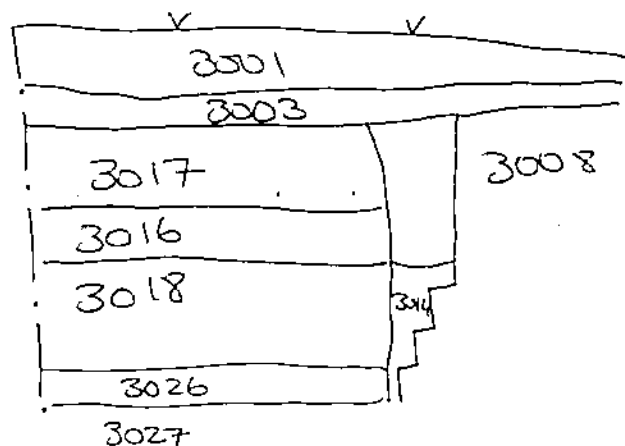
HALF SECTION: consideration at this stage. (complete following section drawing).

Context is hard to dig, and messy because it is so loose. It's difficult to see how far it goes down. More stores to the S, than N.

POST-EX: concluding thoughts. (complete following post-ex plan).

Context forms most substantial layer of bandaged interior fill. Very easy to dig.

SKETCH AND ANY FURTHER DISCUSSION



PROJECT WP13	TRENCH 3	CONTEXT RECORD FORM The Whitworth Park Community Archaeology and History Project	INITIAL + DATE KF 5/7	CONTEXT 3019
EXCAVATOR No; SP	SUPERVISOR KF	*** DEPOSIT ***	SECTION	PLAN

FIELD INTERPRETATION PROVISIONAL DATE

CONTEXT DESCRIPTION	CONTINUES	FINDS
COLOUR Yellow - Brown	CLARITY OF HORIZON Sharp	SAMPLES
COMPOSITION Clay	Stone size + shape large, square	% of context
COMPACTION Compacted (plasticine)	Stone % + sorting 30%	Reason
LENGTH 2.53	Charcoal % < 5%	Sieved?
WIDTH/DIAM. 69	Roots 20%	PHOTO (Slide) 1.7-9 (col.); 1.6-8 B+W
DEPTH/HEIGHT	Other inclusions brick, slate	PHOTO (Digital) 11-13

CONTEXT FORMATION (Taphonomy) Redeposited natural clay	CONTEXT FORMATION (Anthropogenic) Ditch / foundation fill	HOW WAS THE CONTEXT FORMED? (Intentional? The process/procedure) Context was formed as part of exterior foundation cut for bandstand (3009).
---	--	--

Stratigraphical relationships	Physical relationships	WHY IS THE DEPOSIT LIKE THIS? (Look up from the deposit and consider why here, why now. What process made it happen)
	Overlies	Fill is compacted and damp, of the consistency of plasticine. Is cut by roots and compacted by <u>3003</u>.
	Underlies 3003	
	Fill of 3009, 3022	
This context	Cuts	
	Cut by 3025	
	Continues	
	Same as 3016	
COORDINATES	Within	
	Abuts 3007; 3012	
GRID REF	Abutted by	

WHAT WAS THIS DEPOSIT (context narrative- what kinds of practice does it relate to? look out from the deposit and consider the story)

This layer forms part of the WPI of 3009. Deposit was dumped in ditch next to friable black natural 3007.

CONFIDENCE IN EXCAVATION: 1 ↔ 5 5	CONFIDENCE IN INTERPRETATION 1 ↔ 5 3
--	---

PRE-EX: initial thoughts, notes and relevant discussion. (complete following pre-ex plan).

Yellow plasticine-type layer forms a clear break from the black (3007) fill. Difficult to dig. similar in consistency to (3016).

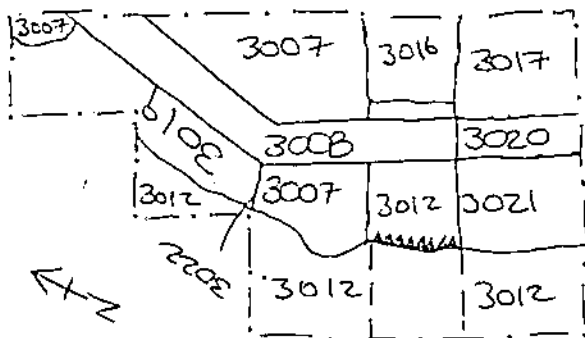
HALF SECTION: consideration at this stage. (complete following section drawing).

Soil is full of inclusions - brick, ceramic, stone.

POST-EX: concluding thoughts. (complete following post-ex plan).

Soil is probably redeposited natural mixed with construction material.

SKETCH AND ANY FURTHER DISCUSSION



PROJECT WP13	TRENCH 3	CONTEXT RECORD FORM The Whitworth Park Community Archaeology and History Project	INITIAL + DATE KF 8/7	CONTEXT 3020
EXCAVATOR RS	SUPERVISOR KF	*** DEPOSIT ***	SECTION	PLAN

FIELD INTERPRETATION PROVISIONAL DATE

CONTEXT DESCRIPTION	CONTINUES	FINDS
COLOUR Red-brown clayey silt	CLARITY OF HORIZON Sharp-medium	SAMPLES
COMPOSITION Clayey-silt	Stone size + shape	% of context
COMPACTION Loose	Stone % + sorting	Reason
LENGTH	Charcoal %	Sieved?
WIDTH/DIAM.	Roots	PHOTO (Slide)
DEPTH/HEIGHT	Other inclusions	PHOTO (Digital)

CONTEXT FORMATION (Taphonomy) Compacted fill of top-course (ruddy) of 3003	CONTEXT FORMATION (Anthropogenic) /	HOW WAS THE CONTEXT FORMED? (Intentional? The process/procedure) Context comprises the soil on top of 3008/3010 in place of top course of bricks.
---	--	---

Stratigraphical relationships	Physical relationships	WHY IS THE DEPOSIT LIKE THIS? (Look up from the deposit and consider why here, why now. What process made it happen) Deposit formed over destroyed, missing upper course of foundation wall.
	Overlies 3008	
	Underlies 3003	
	Fill of	
This context 3020	Cuts	
	Cut by	
	Continues 3008	
	Same as	
COORDINATES	Within	
	Abuts 3007, 3017	
GRID REF	Abutted by	

WHAT WAS THIS DEPOSIT (context narrative- what kinds of practice does it relate to? look out from the deposit and consider the story)
This deposit was the soil that formed between the topsoil and the wall.

CONFIDENCE IN EXCAVATION: 1 ↔ 5 5	CONFIDENCE IN INTERPRETATION: 1 ↔ 5 5
--	--

PRE-EX: initial thoughts, notes and relevant discussion. (complete following pre-ex plan).

Soil forms a distinct layer over the wall in the rising top course of bricks from the wall.

HALF SECTION: consideration at this stage. (complete following section drawing).

Wall appearing beneath contact, crushed brick in soil accounts for lack of upper course.

POST-EX: concluding thoughts. (complete following post-ex plan).

Soil lifted easily from top of wall.

SKETCH AND ANY FURTHER DISCUSSION

PROJECT WP13	TRENCH 3	CONTEXT RECORD FORM The Whitworth Park Community Archaeology and History Project	INITIAL + DATE KE 8/7.	CONTEXT 3021
EXCAVATOR	SUPERVISOR	*** DEPOSIT ***	SECTION	PLAN

FIELD INTERPRETATION PROVISIONAL DATE

CONTEXT DESCRIPTION	CONTINUES	FINDS
COLOUR Ashy-grey	CLARITY OF HORIZON sharp	SAMPLES
COMPOSITION friable	Stone size + shape small, irregular	% of context
COMPACTION loose	Stone % + sorting 30%, widespread	Reason
LENGTH 2.2	Charcoal % 40%	Sieved?
WIDTH/DIAM. 0.73	Roots	PHOTO (Slide)
DEPTH/HEIGHT	Other inclusions brick.	PHOTO (Digital)

CONTEXT FORMATION (Taphonomy) Same as 3007	CONTEXT FORMATION (Anthropogenic) Fill of foundation trench	HOW WAS THE CONTEXT FORMED? (Intentional? The process/procedure) Fill of foundation trench 3009
---	--	---

Stratigraphical relationships	Physical relationships	WHY IS THE DEPOSIT LIKE THIS? (Look up from the deposit and consider why here, why now. What process made it happen) Same as 3007
	Overlies	
	Underlies 3003	
	Fill of 3009	
This context 3021	Cuts	
	Cut by 3009	
	Continues	
	Same as 3007	
COORDINATES	Within	
	Abuts 3008	
GRID REF	Abutted by	

WHAT WAS THIS DEPOSIT (context narrative- what kinds of practice does it relate to? look out from the deposit and consider the story)

This deposit forms the s. fill of 3009 on s side of sondage. Hereafter referred to as 3007 on location of s extent of wall beyond sondage.

CONFIDENCE IN EXCAVATION: 1 ↔ 5 3.4	CONFIDENCE IN INTERPRETATION 1 ↔ 5 5
--	---

PRE-EX: initial thoughts, notes and relevant discussion. (complete following pre-ex plan).

Soil changing to s of sudge but no clear cut
or surface.

HALF SECTION: consideration at this stage. (complete following section drawing).

Clear cut emerging on surface. Same line as (3007)

POST-EX: concluding thoughts. (complete following post-ex plan).

Referred to as continuation of (3007) when located.

SKETCH AND ANY FURTHER DISCUSSION

PROJECT WP13	TRENCH 3	CONTEXT RECORD FORM The Whitworth Park Community Archaeology and History Project	INITIAL + DATE KF 8/7/13	CONTEXT 3023
EXCAVATORS SJ	SUPERVISOR KF	*** DEPOSIT ***	SECTION	PLAN

FIELD INTERPRETATION		PROVISIONAL DATE	
CONTEXT DESCRIPTION		CONTINUES	FINDS Ceramic, Glass
COLOUR Ashey grey-black		CLARITY OF HORIZON sharp	SAMPLES
COMPOSITION friable silt		Stone size + shape pebbles irregular	% of context
COMPACTION loose		Stone % + sorting 75% throughout	Reason
LENGTH 1.76 2.08		Charcoal % 50%	Sieved?
WIDTH/DIAM. 2.29 0.58		Roots small, grass roots	PHOTO (Slide)
DEPTH/HEIGHT 0.14		Other inclusions slate, brick	PHOTO (Digital)
CONTEXT FORMATION (Taphonomy) Coke + ash	CONTEXT FORMATION (Anthropogenic) bandstand interior fill	HOW WAS THE CONTEXT FORMED? (Intentional? The process/procedure) This material was piled into the centre of the bandstand as foundation.	
Stratigraphical relationships	Physical relationships	WHY IS THE DEPOSIT LIKE THIS? (Look up from the deposit and consider why here, why now. What process made it happen)	
	Overlies	Deposit forms the upper fill of bandstand interior, possibly as a level surface on which the upper structure could be built upon.	
	Underlies 3003		
	Fill of 3010		
This context	Cuts		
	Cut by 3010		
	Continues		
	Same as		
COORDINATES	Within		
	Abuts 3008; 3017		
GRID REF	Abutted by		

WHAT WAS THIS DEPOSIT (context narrative- what kinds of practice does it relate to? look out from the deposit and consider the story)

This deposit forms the upper fill of the bandstand interior. It is a mix of soil, burnt material (coke + charcoal), brick and slate.

CONFIDENCE IN EXCAVATION 1 ↔ 5 3	CONFIDENCE IN INTERPRETATION 1 ↔ 5 5
---	---

PRE-EX: initial thoughts, notes and relevant discussion. (complete following pre-ex plan).

Ashy black seams to fill interior.

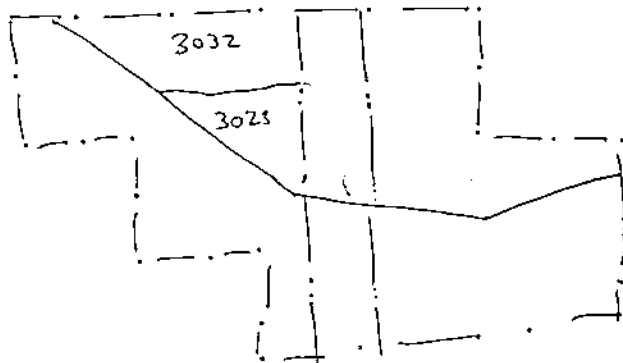
HALF SECTION: consideration at this stage. (complete following section drawing).

Possible grey-brown soil to E of contact.

POST-EX: concluding thoughts. (complete following post-ex plan).

Original extent of 3023 modified to account for 3032, into which this contact is cut.
3023 now accounts for just the ashy black closest to the wall.
New $l \times w = 2.08 \times 0.58$

SKETCH AND ANY FURTHER DISCUSSION



PROJECT WP13	TRENCH 3	CONTEXT RECORD FORM The Whitworth Park Community Archaeology and History Project	INITIAL + DATE KF 8/7/13	CONTEXT 3024
EXCAVATOR KF	SUPERVISOR KF	*** DEPOSIT ***	SECTION	PLAN

FIELD INTERPRETATION	PROVISIONAL DATE
----------------------	------------------

CONTEXT DESCRIPTION	CONTINUES	FINDS
COLOUR Grey-black	CLARITY OF HORIZON	SAMPLES
COMPOSITION fine silty sand	Stone size + shape small, irregular	% of context
COMPACTION loose	Stone % + sorting 20%, all over	Reason
LENGTH 0.5L	Charcoal % 40%	Sieved?
WIDTH/DIAM. 0.6L	Roots	PHOTO (Slide)
DEPTH/HEIGHT	Other inclusions slate, coke, slag	PHOTO (Digital)

CONTEXT FORMATION (Taphonomy) Burning and industrial activity	CONTEXT FORMATION (Anthropogenic) recycled material or ditch fill.	HOW WAS THE CONTEXT FORMED? (Intentional? The process/procedure) Bandstand, outside foundation fill.
--	---	--

Stratigraphical relationships	Physical relationships	WHY IS THE DEPOSIT LIKE THIS? (Look up from the deposit and consider why here, why now. What process made it happen)
	Overlies	Deposit forms another dump of shag Hack (gone as 2007) in after Bandstand fill. Was dumped in after or before 2019.
	Underlies	
	Fill of 3009	
This context 3024	Cuts	
	Cut by 3008, 3009	
	Continues N	
	Same as 3007, 3021	
COORDINATES	Within	
	Abuts 3019	
GRID REF	Abutted by 3008	

WHAT WAS THIS DEPOSIT (context narrative- what kinds of practice does it relate to? look out from the deposit and consider the story)

Foundation trench fill to N of wall.

CONFIDENCE IN EXCAVATION 1 ↔ 5 5	CONFIDENCE IN INTERPRETATION 1 ↔ 5 4
---	---

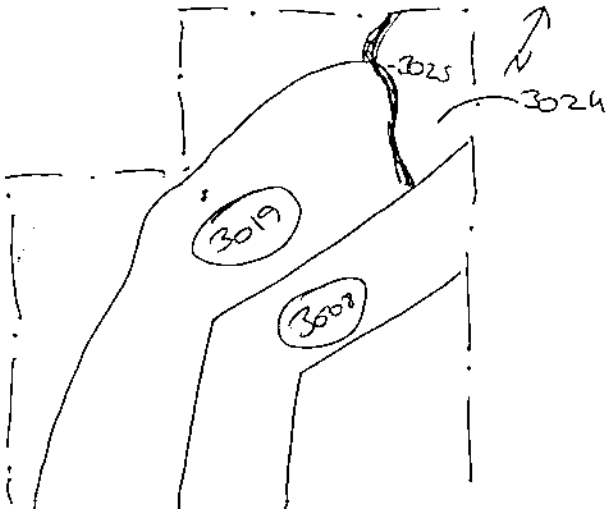
PRE-EX: initial thoughts, notes and relevant discussion. (complete following pre-ex plan).

Loose friable soil abutting 3008 to N, after excavation.

HALF SECTION: consideration at this stage. (complete following section drawing).

POST-EX: concluding thoughts. (complete following post-ex plan).

SKETCH AND ANY FURTHER DISCUSSION



PROJECT WP13	TRENCH 3	CONTEXT RECORD FORM The Whitworth Park Community Archaeology and History Project	INITIAL + DATE JF 10/7/13	CONTEXT 3028
EXCAVATOR	SUPERVISOR	*** DEPOSIT ***	SECTION	PLAN

FIELD INTERPRETATION PROVISIONAL DATE

CONTEXT DESCRIPTION	CONTINUES	FINDS <i>Ceramic, glass, ferrous</i>
COLOUR <i>Reddish Brown</i>	CLARITY OF HORIZON <i>Sharp</i>	SAMPLES
COMPOSITION <i>Silty clay</i>	Stone size + shape <i>Small pebbles + irregular</i>	% of context
COMPACTION <i>loose</i>	Stone % + sorting <i>> 30%</i>	Reason
LENGTH	Charcoal % <i>> 40%</i>	Sieved? <i>/</i>
WIDTH/DIAM.	Roots <i>5%</i>	PHOTO (Slide)
DEPTH/HEIGHT	Other inclusions <i>Slate, brick, charcoal</i>	PHOTO (Digital)

CONTEXT FORMATION (Taphonomy) <i>Redeposited Redeposit</i>	CONTEXT FORMATION (Anthropogenic) <i>Foundation</i>	HOW WAS THE CONTEXT FORMED? (Intentional? The process/procedure) <i>Dug a hole for foundation, fill with redeposited material put foundation trench into it</i>
--	---	--

Stratigraphical relationships	Physical relationships	WHY IS THE DEPOSIT LIKE THIS? (Look up from the deposit and consider why here, why now. What process made it happen) <i>Deposit forms the builder's layer, prefinished bandstand.</i>
	Overlies	
	Underlies <i>3030, 3012</i>	
	Fill of 3028	
This context <i>3028</i>	Cuts	
	Cut by	
	Continues	
	Same as	
COORDINATES	Within	
	Abuts <i>3008</i>	
GRID REF	Abutted by	

WHAT WAS THIS DEPOSIT (context narrative- what kinds of practice does it relate to? look out from the deposit and consider the story)
*This was the layer hid down ~~to~~ during the construction of the wall, artefact scatter not densest under **3030***

CONFIDENCE IN EXCAVATION: 1 ↔ 5 4	CONFIDENCE IN INTERPRETATION: 1 ↔ 5 4
--	--

PRE-EX: initial thoughts, notes and relevant discussion. (complete following pre-ex plan).

Ⓐ Quick soil change around 3030

HALF SECTION: consideration at this stage. (complete following section drawing).

Getting softer as going down find concentration under 3030

POST-EX: concluding thoughts. (complete following post-ex plan).

SKETCH AND ANY FURTHER DISCUSSION

PROJECT WP13	TRENCH 3	CONTEXT RECORD FORM The Whitworth Park Community Archaeology and History Project	INITIAL + DATE KF 12/7	CONTEXT 3026
EXCAVATOR KF	SUPERVISOR KF	*** DEPOSIT ***	SECTION	PLAN

FIELD INTERPRETATION

PROVISIONAL DATE

CONTEXT DESCRIPTION	CONTINUES	FINDS
COLOUR light brown	CLARITY OF HORIZON faint - sharp	SAMPLES
COMPOSITION sandy silt	Stone size + shape pebbles	% of context
COMPACTION loose	Stone % + sorting <5%	Reason
LENGTH 1.74	Charcoal %	Sieved?
WIDTH/DIAM. 2.5	Roots Large tree root	PHOTO (Slide)
DEPTH/HEIGHT 0.12	Other inclusions	PHOTO (Digital)

CONTEXT FORMATION
(Taphonomy)CONTEXT FORMATION
(Anthropogenic)

HOW WAS THE CONTEXT FORMED? (Intentional? The process/procedure)

Redeposit**Baulstad Fill****Context was formed pos. by
accidental fill over natural**

Stratigraphical relationships

Physical relationships

WHY IS THE DEPOSIT LIKE THIS?

(Look up from the deposit and consider why here, why now. What process made it happen)

3017Overlies **3027 (natural)****Deposit was first fill of
baulstad, and possibly formed
while redeposit of soil to fill
baulstad.****3026**Underlies **3017**This context **3026**Fill of **Baulstad****3027**

Cuts

3027

Cut by

Continues

COORDINATES

Same as

Within

GRID REF

Abuts **3008**

Abutted by

WHAT WAS THIS DEPOSIT (context narrative- what kinds of practice does it relate to? look out from the deposit and consider the story)

Redeposit forms soil barrier between **3017 and black
natural and natural **3027**.**CONFIDENCE IN EXCAVATION 1 → 5 **5**CONFIDENCE IN INTERPRETATION 1 → 5 **3**

PRE-EX: initial thoughts, notes and relevant discussion. (complete following pre-ex plan).

Soil changes beneath (3027), becoming more brown and clayey.

HALF SECTION: consideration at this stage. (complete following section drawing).

Soil clears back to yellow, poss. natural.

POST-EX: concluding thoughts. (complete following post-ex plan).

Soil (3026) overlays natural (3027).

SKETCH AND ANY FURTHER DISCUSSION

PROJECT WP13	TRENCH 3	CONTEXT RECORD FORM The Whitworth Park Community Archaeology and History Project	INITIAL + DATE KF 12/7	CONTEXT 3027
EXCAVATOR RS	SUPERVISOR KF	*** DEPOSIT ***	SECTION	PLAN

FIELD INTERPRETATION

PROVISIONAL DATE

CONTEXT DESCRIPTION	CONTINUES	FINDS /
COLOUR Yellow-Grey	CLARITY OF HORIZON	SAMPLES
COMPOSITION Clay	Stone size + shape	% of context
COMPACTION solid	Stone % + sorting	Reason
LENGTH 1.75 4m	Charcoal %	Sieved?
WIDTH/DIAM. 2.0 1.75	Roots	PHOTO (Slide) /
DEPTH/HEIGHT	Other inclusions	PHOTO (Digital)

CONTEXT FORMATION
(Taphonomy)CONTEXT FORMATION
(Anthropogenic)

HOW WAS THE CONTEXT FORMED? (Intentional? The process/procedure)

Natural

Natural

Natural (or Foundation layer)

Stratigraphical relationships

Physical relationships

WHY IS THE DEPOSIT LIKE THIS?

(Look up from the deposit and consider why here, why now. What process made it happen)

3026	3027	3008
------	------	------

Overlies /
Underlies 3026, 3028

Natural, compacted

This context

3027

Fill of

Cuts

Cut by

Continues

Same as

COORDINATES

Within

Abuts

GRID REF

Abutted by

WHAT WAS THIS DEPOSIT? (context narrative- what kinds of practice does it relate to? look out from the deposit and consider the story)

Natural

CONFIDENCE IN EXCAVATION 1 ↔ 5 5

CONFIDENCE IN INTERPRETATION 1 ↔ 5 5

PRE-EX: initial thoughts, notes and relevant discussion. (complete following pre-ex plan).

(3026) coming down onto yellow-grey. similar to natural in
TR - A.

HALF SECTION: consideration at this stage. (complete following section drawing).

(3028) and (3008) coming down on same surface.

POST-EX: concluding thoughts. (complete following post-ex plan).

(3027) is natural

SKETCH AND ANY FURTHER DISCUSSION

PROJECT WP13	TRENCH 3	CONTEXT RECORD FORM The Whitworth Park Community Archaeology and History Project	INITIAL + DATE KF 12/7/13	CONTEXT 3028
EXCAVATOR KF	SUPERVISOR KF	*** DEPOSIT ***	SECTION	PLAN

FIELD INTERPRETATION

PROVISIONAL DATE

CONTEXT DESCRIPTION	CONTINUES	FINDS Ceramic, glass.
COLOUR Red-brown	CLARITY OF HORIZON	SAMPLES oil
COMPOSITION silly-clay	Stone size + shape	% of context < 10%
COMPACTION compacted, but loose	Stone % + sorting	Reason
LENGTH 0.74	Charcoal %	Sieved?
WIDTH/DIAM. 0.45	Roots	PHOTO (Slide) 194
DEPTH/HEIGHT	Other inclusions	PHOTO (Digital)

CONTEXT FORMATION (Taphonomy)	CONTEXT FORMATION (Anthropogenic) Fill of trench / Construction mat.	HOW WAS THE CONTEXT FORMED? (Intentional? The process/procedure) Context was compacted by 3030
----------------------------------	---	---

Stratigraphical relationships	Physical relationships	WHY IS THE DEPOSIT LIKE THIS? (Look up from the deposit and consider why here, why now. What process made it happen) Compacted by 3030, and filling 3009 foundation cut.
	Overlies	
3030 3012 3009	Underlies	
	Fill of 3009	
This context 3028	Cuts	
	Cut by	
3009	Continues N-S	
	Same as	
COORDINATES	Within	
	Abuts	
GRID REF	Abutted by	

WHAT WAS THIS DEPOSIT (context narrative- what kinds of practice does it relate to? look out from the deposit and consider the story)

This deposit was construction layer, supporting **3030
and filling **3009**. **3028** poss. predates **3008****

CONFIDENCE IN EXCAVATION 1 ↔ 5 5	CONFIDENCE IN INTERPRETATION 1 ↔ 5 4
---	---

PRE-EX: initial thoughts, notes and relevant discussion. (complete following pre-ex plan).

Large amount of ceramic + glass underlying 3030 on top of
.. Contact.

HALF SECTION: consideration at this stage. (complete following section drawing).

3028 D, compacted by boxes on excavation.

POST-EX: concluding thoughts. (complete following post-ex plan).

3028 probably laid down to facilitate construction of
3008.

SKETCH AND ANY FURTHER DISCUSSION

PROJECT WP13	TRENCH 3	CONTEXT RECORD FORM The Whitworth Park Community Archaeology and History Project	INITIAL + DATE KF 12/7	CONTEXT 3029
EXCAVATOR KF, AB	SUPERVISOR KF	*** DEPOSIT ***	SECTION	PLAN

FIELD INTERPRETATION PROVISIONAL DATE

CONTEXT DESCRIPTION	CONTINUES 5	FINDS Ceramic
COLOUR Grey-brown	CLARITY OF HORIZON	SAMPLES
COMPOSITION Clayey silt	Stone size + shape Small, irregular	% of context
COMPACTION friable	Stone % + sorting c. 20%	Reason
LENGTH 0.85	Charcoal % 0.5%	Sieved?
WIDTH/DIAM. 0.38	Roots	PHOTO (Slide)
DEPTH/HEIGHT	Other inclusions Ceramic	PHOTO (Digital)

CONTEXT FORMATION (Taphonomy) Loose fill	CONTEXT FORMATION (Anthropogenic) Bandstand foundation fill	HOW WAS THE CONTEXT FORMED? (Intentional? The process/procedure) Dumping of materials into <u>3009</u>
---	--	--

Stratigraphical relationships	Physical relationships	WHY IS THE DEPOSIT LIKE THIS? (Look up from the deposit and consider why here, why now. What process made it happen) Deposit forms part of foundation all of 3009.
	Overlies	
	Underlies	
	Fill of 3009	
This context 3029	Cuts	
	Cut by 3033	
	Continues	
	Same as	
COORDINATES	Within	
	Abuts 3007	
GRID REF	Abutted by	

WHAT WAS THIS DEPOSIT (context narrative- what kinds of practice does it relate to? look out from the deposit and consider the story)
Deposit was foundation fill outside bandstand.

CONFIDENCE IN EXCAVATION 1 ↔ 5 4	CONFIDENCE IN INTERPRETATION 1 ↔ 5 5
---	---

PRE-EX: initial thoughts, notes and relevant discussion. (complete following pre-ex plan).

foundations all continues south. (3029) not excavated,
only cleared.

HALF SECTION: consideration at this stage. (complete following section drawing).

POST-EX: concluding thoughts. (complete following post-ex plan).

SKETCH AND ANY FURTHER DISCUSSION

PROJECT WP13	TRENCH 3	CONTEXT RECORD FORM The Whitworth Park Community Archaeology and History Project	INITIAL + DATE 12/7	CONTEXT 3031
EXCAVATOR KF	SUPERVISOR KF	*** DEPOSIT ***	SECTION	PLAN

FIELD INTERPRETATION

PROVISIONAL DATE

CONTEXT DESCRIPTION	CONTINUES E.	FINDS
COLOUR Grey-black	CLARITY OF HORIZON Gradual	SAMPLES
COMPOSITION fine, ashy	Stone size + shape	% of context
COMPACTION loose	Stone % + sorting	Reason
LENGTH 0.31	Charcoal % c. 70%	Sieved?
WIDTH/DIAM. 0.24	Roots 20%	PHOTO (Slide)
DEPTH/HEIGHT	Other inclusions	PHOTO (Digital)

CONTEXT FORMATION (Taphonomy) slag + industrial	CONTEXT FORMATION (Anthropogenic) bandstand fill.	HOW WAS THE CONTEXT FORMED? (Intentional? The process/procedure) Deposited inside bandstand.
--	--	--

Stratigraphical relationships	Physical relationships	WHY IS THE DEPOSIT LIKE THIS? (Look up from the deposit and consider why here, why now. What process made it happen) Interior fill of bandstand
	Overlies	
	Underlies 3003	
	Fill of 3035	
This context 3031	Cuts 3035	
	Cut by	
	Continues	
	Same as	
COORDINATES	Within	
	Abuts 3017	
GRID REF	Abutted by	

WHAT WAS THIS DEPOSIT (context narrative- what kinds of practice does it relate to? look out from the deposit and consider the story)

Interior fill of bandstand

CONFIDENCE IN EXCAVATION 1 ↔ 5

4

CONFIDENCE IN INTERPRETATION 1 ↔ 5

5

PRE-EX: initial thoughts, notes and relevant discussion. (complete following pre-ex plan).

HALF SECTION: consideration at this stage. (complete following section drawing).

POST-EX: concluding thoughts. (complete following post-ex plan).

SKETCH AND ANY FURTHER DISCUSSION

PROJECT WP13	TRENCH 3	CONTEXT RECORD FORM The Whitworth Park Community Archaeology and History Project	INITIAL + DATE 12/7	CONTEXT 3032
EXCAVATOR KF	SUPERVISOR KF	*** DEPOSIT ***	SECTION	PLAN

FIELD INTERPRETATION		PROVISIONAL DATE
CONTEXT DESCRIPTION	CONTINUES	FINDS
COLOUR Grey brown	CLARITY OF HORIZON Sharp	SAMPLES
COMPOSITION silty clay	Stone size + shape irregular, pebbles	% of context
COMPACTION loose	Stone % + sorting	Reason
LENGTH 1.1	Charcoal % 70%	Sieved?
WIDTH/DIAM. 1.9	Roots	PHOTO (Slide)
DEPTH/HEIGHT	Other inclusions	PHOTO (Digital)

CONTEXT FORMATION (Taphonomy)	CONTEXT FORMATION (Anthropogenic) Bandstand fill	HOW WAS THE CONTEXT FORMED? (Intentional? The process/procedure) Intero fill of bandstand.
----------------------------------	---	--

Stratigraphical relationships	Physical relationships	WHY IS THE DEPOSIT LIKE THIS? (Look up from the deposit and consider why here, why now. What process made it happen) fill material was dumped in bandstand.
	Overlies	
	Underlies	
	Fill of	
This context 3032	Cuts	
	Cut by 2008	
	Continues	
	Same as	
COORDINATES	Within	
	Abuts 3023, 2008	
GRID REF	Abutted by	

WHAT WAS THIS DEPOSIT (context narrative- what kinds of practice does it relate to? look out from the deposit and consider the story)

Intero fill of bandstand.

PRE-EX: initial thoughts, notes and relevant discussion. (complete following pre-ex plan).

HALF SECTION: consideration at this stage. (complete following section drawing).

POST-EX: concluding thoughts. (complete following post-ex plan).

SKETCH AND ANY FURTHER DISCUSSION