

WHITWORTH PARK ARCHAEOLOGY & HISTORY
PROJECT 2011.

5th September 2011.

A day of mixed weather - rain showers, breeze and sun but the team did well. Initial talk by SJ about the historic significance and social context of parks, followed by specific description of historic features and history of Whitworth by me. HC did H&S induction and excavation talk and we introduced the project staff.

Site Manager - Nick Overton

Site Supervisors - Ellen

Kat Fenelly

Stephanie

Research Assistant - Ruth Colton

Good to have Ken Stone with us as well: Ken to show off my gardening skills! A good start made today on all 3 trenches, now deturfed, shovel scraped and fenced with notices.

Tr. ① Pavilion, path & lake edge

Tr. ② & ③ Bandstand

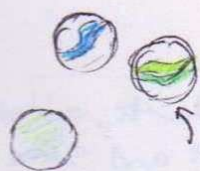
Tr. ④ Mound

Worked very well with students, aided by quite a few level 2 students and some recent graduates as well as our community volunteers (not as broad a cross section as we'd hoped... mostly white, out of work with 2-3 recent graduates but this is interesting in itself).

A beautiful turf stack built by one of the Friends volunteers made Tr. 1 very impressive! Well-sorted, earthworm rich turf; soon down on to the interface with rubble / destruction layer, rich in glass, tile and slate as well as small finds. Some favourites... a blue child's belt with cut-out daisies (plastic), an old fountain pen, several marbles, coins, a broken cracker toy yellow aeroplane, a stamped clay pipe stem, a complete glass vial. More than I was expecting to be honest!

Some lovely visitors as well; a mother and child who 'liked soil', a group of young teens from the Academy who wanted to get stuck in, and 3 gentlemen of the park (eager to clean up the coins!!). They were particularly keen and also charming. A good start but bad weather forecast for tomorrow.

SJ and I stay late to work on the conference paper for Urban Cultures and Public Space: long day & feet hurt in steel toe-cap boots!!



↑ marbles

↑ plain 'soda' bottle stoppers: re-used as marbles?



↑ child's plastic blue belt with star/daisy design



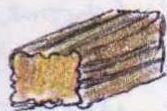
broken bicycle bell

6th September 2011.

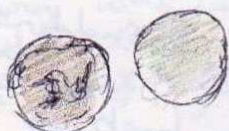
Another downpour in the morning but reasonable on site during the day. Clearing back began in earnest, revealing a brick-red rubblely surface, tarmac (disturbed) and suspected edge of lake deposits in Tr. ①. In Tr. ② and ③, disturbed footings may be coming to light around the bondstand, with iron and slag / charcoal deposits in disturbed features. In Tr. ④, culture rich layers are mixed up with clay. Some more lovely finds - lots of brick, tile and glass, marbles, coins and a commemorative medallion I am told! Also, a curious ribbed block which somehow struck a memory, and I suddenly remembered Kate's little pack of "knuckle bones" (throw one up from the back of your hand, pick one up, catch the flyer on the back of your hand: now try with two, three...). Radio Manchester came, so we recorded interviews, also did the first site tours, met the Community Police Officer, did impromptu chats with Academy children and a french visitor. Inbetween, caught up on planned school activities with Reeth, talked with Carole Anne King and Clare Pyle about the YAC visit, finished the conference paper with Siân, checked the cameras over, spoke to several students with problems - returning to study, and did a PhD supervision in the cafe.

our lunchtime! Ate my sandwich on the way home (met a nice museum café chef, Kev, who has promised to come and visit us later on for a tour).

Some interesting oral history beginning to emerge: one fellow, Dan, reported anecdotally the use of the mound by 'hippies', congregating there, and also spoke briefly of the racial tensions between the 'Irish' and the 'Blacks' when the ethnic make-up of the area began to change. We'll hope he comes back to speak to us again but he was rushing off to the bookies!



'Knuckle bone'
or 'Flintstones'



↑ 'Jenny Wren'

2x EDWARD VI
1939 coins
(NB 'The King's
Speech')

Sian a little worried we are proceeding on too fast, without pause for recording or teaching. We are, after all, a research excavation, and our main aim is to educate about the process not complete the dig as soon as possible. SS to speak with HC about this tonight, so I may end up on site tomorrow whilst she does the conference paper.

7th September 2011.

I was mostly off site today - first at the CRESC organised 'framing the city' conference, doing a joint paper with SS. Quite basic but Sian had some nice historical research on the Parks Select Committee and I put in some images and thoughts on materiality. We do work well together I think. Funny to get back into our dig gear in the polished foyer of the Royal Northern College of Music, and head back to site. Some bad rain this morning and lunchtime but a better afternoon.

Didn't have time to catch up on the trenches well but sorted some finds out: a ? lead commemorative medallion of George Edward VII - the same as our statue!! Will get soon crystal boxes for small finds sorted out.

Nick Merriman and other museum staff visited the site so HC in charge, and pace going well. I feel even if we find nothing else, we have the ability to discover some interesting things and tell fascinating stories about the past.

Wonder what the radio broadcast was like and hope we can get a copy.

Spent the afternoon on UG business with the Special Circumstances Board and student cases to review (some of whom are out on site). Looking forward to being back in dig gear tomorrow, before the first of the school visits.

30 September 2011.

Work on site today (Bibi's first day at school) but came bearing bin bags, and antiseptic hand wash. The trenches proceed apace.

Tr. 1 has the lake fill (clay and rubble) on top of a nicely sloping tarmac/concrete surface, on which is perched one of the decorative boulders or stones seen in some of the photos. The layers leading up to the pavilion are a real mix of red brick crushed up with other rubble (perhaps a levelling layer of the pavilion?) and other destruction layers, suggesting a pretty comprehensive demolition. Perhaps we'll find foundation layers or trenches beneath? We'll target this for clearing and excavation with the 11th formers tomorrow.

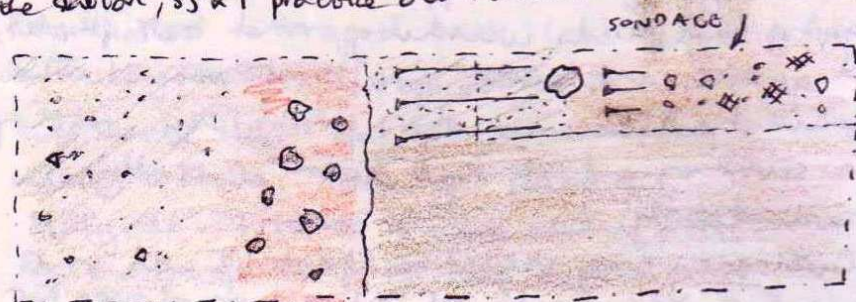
Tr. 2 and 3 are slowly revealing iron settings or lumps which may / may not be in situ remains of the bandstand railings. (We know that those who paid got to sit closer whilst others were 'excluded' perhaps by means of a planted or structured barrier. Tr. 2 however is a root nightmare, in amongst the trees.

Tr. 4, the mound, has a brown / fawn mottled clay layer make-up, covered by a grey compact lens, overlain by a loose brown silt. There is good evidence for a path, flanked by a brick lined edge (part decorative, part drain).

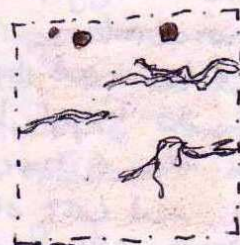
New finds: ironwork and some lead, coins, another fragmentary flintstone, buttons, a delicate bronze loop with eyelets (role unknown), possible part of a railing, some bone.

Plans for both the school visits and the open

Day in hand. Ruth's workshops look very good, and she has prepared lots of resources. Will split the 11th formers between digging and finds washing tomorrow, with lots of activities in reserve if need be, for wet weather, on the way to the station, 35 x 1 practice on First Aid skills!!

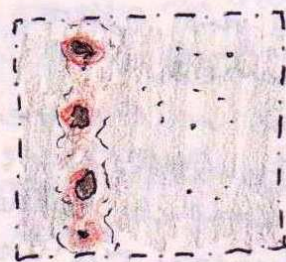


Tr. ① Pavilion & Lake

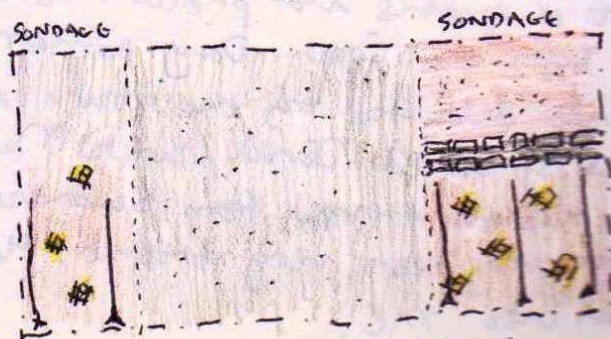


Tr. ② Bandstand

(NB, not in continuous relation)

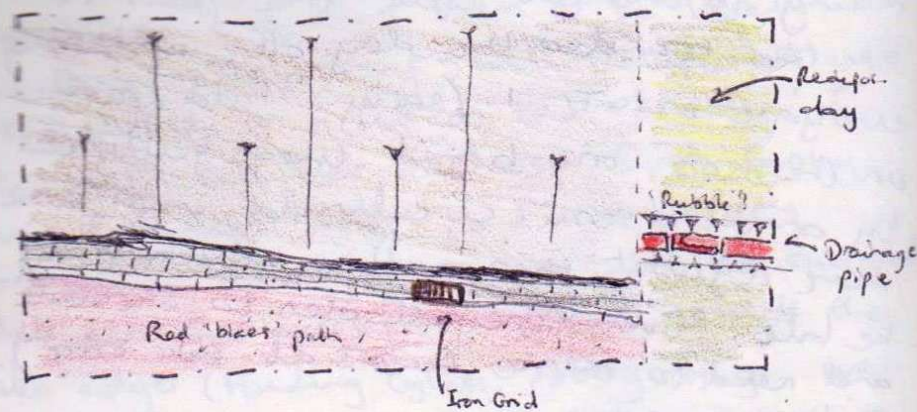


Tr. ③ Bandstand



Tr. 4 Mound

In Tr. 2, meanwhile, the crushed red brick 'blaze' path is showing nicely, edged to the north with 3 longitudinal rows of grey, red brick and edged with tiles, with an iron grid plate mid-way along. The mound of clay is capped by a more orange rubble layer, but underneath is brick-rich rubble and an earlier drain pipe.



Some interesting visitors: Mike Amesbury, the Culture and Leisure Councillor, who seemed delighted with the project and stayed for a long while. Also, a short film, made for the University about its cultural partners. A lunchtime tour, and visits today from Karina Croucher, and Stephen (Siân's new PhD student).

We plan to go for a drink tomorrow night, all being well - a good time to reflect on things and plan the last two busy days.

Travelling home on the train, I find myself thinking of Pom-Pom (Grandpa) - Fred Comperthwaite: clerk to the Parish Council of Audenshaw. What would he make of this? What stories could he tell me?

14th September 2011.

A busy day - trying to resolve the major questions on each trench, before recording tomorrow and then backfill. The first day for a while with no large groups of visitors, and we had rather miserable weather for most of the day.

In Tr. 1, we find more gullies or slot drains, cut into the area near the lake. Most of the small potholes or features resolve themselves into iron pan around lumps of slag, and prove to be nothing. We clear off a larger area of the tarmac leading to the lake, which looks lovely.

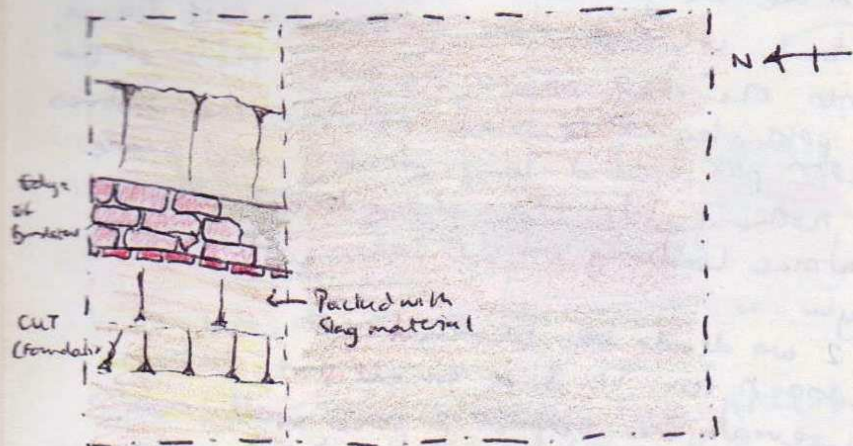
Tr. 2 we decide to backfill and will not come back to. Tr. 3, a small slot taken down reveals the top of a low wall, and cuts for its foundation. Could this be a wall of the bandstand, or around it?

Tr. 4, the clearing leaves path, brick & tile edge and grate looking beautiful. A sondage on the eastern side reveals earlier redeposited clay (still not the original land surface), and a disturbed corner, which turns out to be modern (with hazard tape in it!) from the construction of the play park.

The weather improves towards the end of the day and we finish with some site photos before a drink in the KRO Bar, where we see our new Head of School (who recognises our high-vis vests!) A good chance to relax and chat - I talk mostly to Nick and Ellen. Hate (ish) home!

15th September 2011.

We finished backfilling Tr. 2 but Tr. 3 has come into its own today. We seem to have found one of the return sides towards the back of one barrow, in a neatly cut trench, infilled with metal slag rubble. In this fill we have found fragments of textiles and leather (possibly

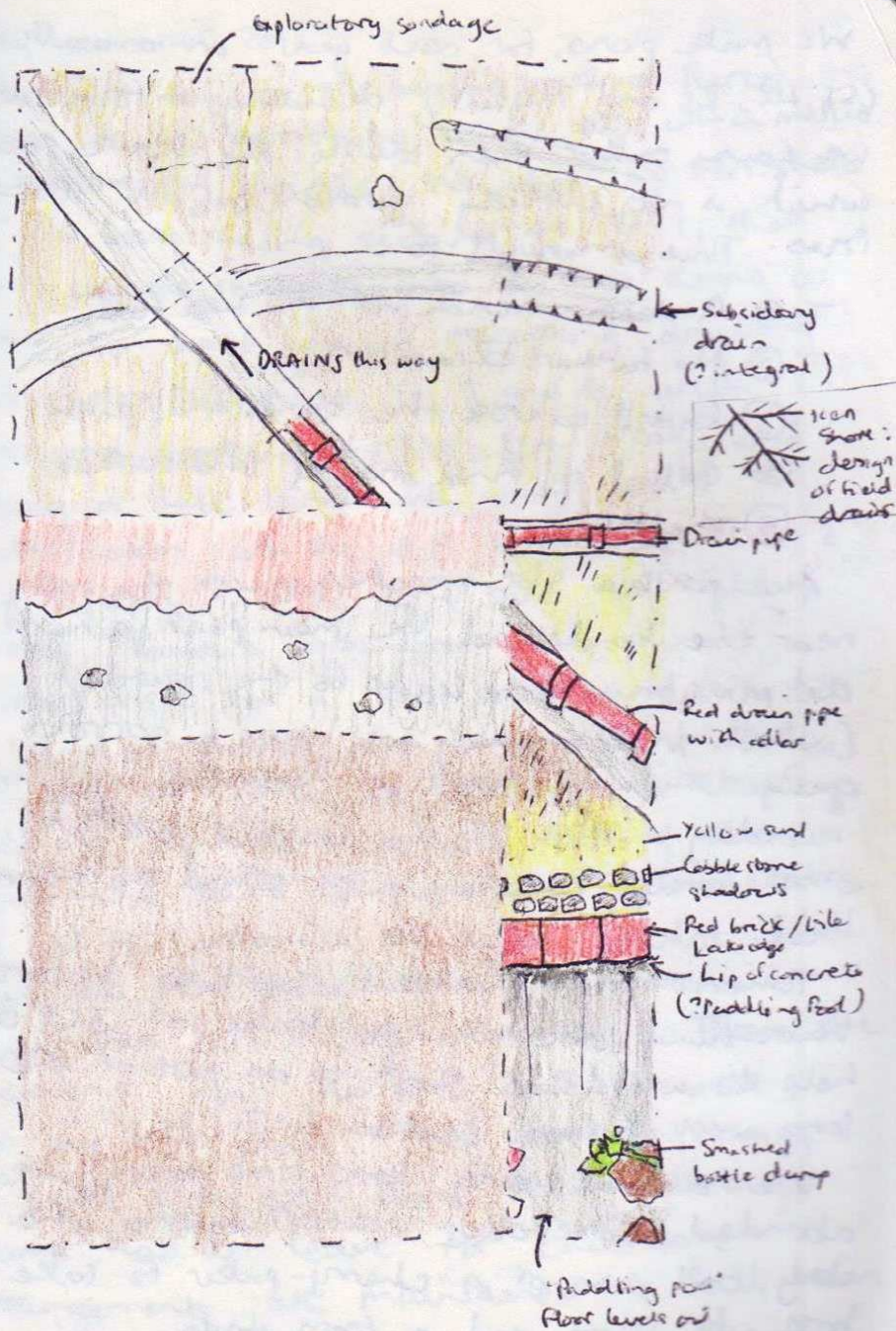


Tr. 3

part of a shoe?). A 3 course wide brick wall is set on a slightly wider plinth. Now we have a side, we can chase the rest of the structure next year perhaps.

In Tr. 4, the drain revealed a lonely clay pipe, which probably intersects further up with the metal drain at the path edge.

In Tr. 1, the cut drains also have larger, necked/lipped drains, drawing towards the NW. We are trying to resolve the relationship between the diagonal drain and the "wing" drain and see if they are part of the same integrated system. A sondage into the clay suggests it is natural. Meanwhile, at the far end we have the levelling-out of the



concrete "padding pool" under which must lie the original lake - something to explore next year.

We make plans for next year on a walk round (St. HC, KS and myself), deciding to focus on what we have rather than tackle the house (basilica) which is not directly germane to our story or trees. This amounts to:

- Tr. ① A deeper trench into the lake hill
- ② No further excavation
- ③ Extend or cross the bandstand/path
- ④ Extend to find original land surface
- ⑤ shelter

Also possible slot trenches across the path near the bandstand, the main path behind the pavilion which leads to the roundel (which may or may not have a narrow gauge railway track or ? tramline underneath, according to one of the council workers), or the outer circular path round the flower bed.

Tomorrow is all about recording before backfilling but we now have a JCB to help us with this. Hope to do part of the long west-facing section in Tr. 1.

We have a strong lunchtime town, well attended, some other visitors during the day, and use of a cherry-picker to take both side shots and a team photo.

16th September 2011.

Our last day on site begins with a fierce clean of the section by HC and NC, which makes it look really glorious. We clean up then photo all the west facing section of Tr. 1, then break up the students into 2-man teams to draw it. Last bits of recording, drawing and photography on Tr. 3 and 4, with everyone working through tea break and taking a late lunch. We watch with satisfaction as the JCB backfills Tr. 4, 2 and finally 1, after some last high site photos. Various groundsmen and council workers visit for a last time, and we do a round of thanks and comments before the hwy of final backfilling and rebaring, clearing the site huts and taking the equipment back to the lock-up and labs. SJ and HC organize the latter whilst (and Nick set the pace on site and Ken supervises but relying on Tr. 1. Then, the heavens open. No-one backed out, no-one left site. They worked through it until they were done, and although some had to leave for childcare arrangements, we maintained a full team on site until around 6pm.

Ken however, was distressed by both the students' attitude (they were in a rather festive atmosphere during the final throes of it all) and the state of the ground.

It did not a mess in the rain but we are very hopeful it will recover well, but this did not mollify him. At 75, with a heart attack behind him, this greatly worried me. He also thought the directors should all have remained on site (impossible, during such a clear-up) and resented being asked to supervise. I felt bad (it brought back memories of PLW's anger at Whamam over the funds) and did my best to listen and mollify him. We can do things differently next year on the main part, using a turf cutter etc. but SJ did talk this through and tried to prepare everyone beforehand.

Anyway, we did a last fool run, packing Mohsin off to AXE with a bite glass cut, for a tetanus injection. Finds in the lab, records in the office. Steph, Ellen and I ended up in the ladies, washing the mud from our faces, before a pint at KRO. Sat with both Ken and his wife Diana, and did my best to entertain and listen... I have lots of links with both, so that was easy. Diana has worked with Ian Stead and Barry Cumliffe, and knew Tony Pacitto, and Ken lived in Sheffield but would have been an architect on the Oxford Road Corridor when Ted was finishing his degree and then teaching at Burnage.

So, it was a pleasure really. Just a few students left with us - Julija and Mo (jabbed & plastered up from AXE), Rob, as well as Kat, Ellen, Steph, Nick, Hannah (having put Lya to bed), and Stuart who joined us from ADS, York. I couldn't stay for supper but it was lovely to leave Manchester as dark fell: the rain on Oxford Road, the early autumn coming on of light, leaving good company behind in the pub.

A most rewarding and unexpectedly satisfying dig: so good to work with Siward Hannah. I hope I pulled my weight and did what I could. More will be needed over the next year. I am sure... starting with a handling and image session at the Manchester Academy on Thursday, for the Deaf children.

BLOG images: Pick + dog
Skin on tow
Hannah + Mo record
Fill
Bucket
Digger
Lya
Arborslygh
Manchester shed

WHITWORTH PARK 2013.

1st July 2013.

A day of great activity, after our year's hiatus for maternity leave for Hannah (Lobb - Wilf, b. 01/07/12) and myself (Giles - Rosie, b. 14/07/12). A day of even cloud/sun, with a light shower or two. Greatly assisted by the Manchester City Council, the mini-digger made short work of emptying out Trench ①, and although there is a lot of clearing to do, the basic features are once more visible. Trench ③ and ④ had to be de-buried by hand, as the turf cutter (requested by the Friends of the Park) really did not work on these more subtly, uneven surfaces. Again, much of the backfill removed from both of these by the end of the day. Sterling work.

We have a very small student team - only 5 or so first years, but a fair few 2nd and 3rd year volunteers, which is lovely. Trying to promote dissertation topics amongst them! Also, a good group of community volunteers, two of whom (Jed and Tony), have considerable excavation experience, being discharged diggers, eager to try their hand again. In terms of staff, we have Cat and Steph as supervisors once more, with Nic Overton as Site Manager and Tr. ① supervisor. Each has a dedicated site supervisor assistant.

Monday 7th July 2013.

We were slightly surprised this morning to be greeted by 60 pupils (+ 15 or so staff!) from Medlake Primary. The classes were supposed to be split into 2 groups (one morning, one afternoon) but all came at once. Quite a challenge but we rose to the occasion, doing 3 tasks: DIG, FINDS, DRAMA WORKSHOP. An excellent session on site, with discoveries of a marble, graphite/slate pencil, coal bottle fragment, window glass, stone, drainage pipe, tiles, stone blocks and slates. Traces of the pavilion, children's toys, fragments of china, and finally, lumps of slag - speaking of the wider city and the processes of manufacture and use of the byproducts.

The finds went well but I have yet to catch up with Ruth on the drama, yet Gill said she had managed to channel one disaffected child who said he wanted to be swimming, into acting out falling out of the boat and swimming to the shore!

A relief to see them all off, in a way! Half middle of the day, and chatted to Tim Selby who has come from Durham to use us as a case study for his thesis on archaeology in the curriculum.

Then caught up with Frank Collins, our volunteer who trained as a fine artist, and is producing beautiful sketches of the benches and the finds.

And what finds! We have hit the interface between the sandy infill of the lake and its black, waterlogged silt. Ruth and Siân were digging alongside Nick, and peeling back the silt, they began to reveal a treasure trove of artefacts!

- complete glass bottle with stamps/names
- a miniature china plate from a doll's tea service
- a lead soldier with blue trousers and a gold jacket
- parts of a shoe
- rubber heads of balls
- coconut shells - a wooden whistle
- mussels
- marbles
- a porcelain soldier's head

I shamelessly asked if I could dig for just a bit and found a doll's blue eye, and a wooden bead! Ruth is delighted - ch. ③ of her thesis sorted!





China doll's plate



Porcelain soldier's head



Wooden whistle



Lead soldier

Amazing pipes too:

- 'Auld lang Syne' with clasped hands



- 'Erin' Harp & Heart.



Tuesday 8th July 2013.

Manderley Academy on site today, just a small group of 7 with Parbinder Dillon - lovely to see her again. They braved temperatures of 28°C to dig. (finding a lovely clay seal or stamp with whorled pattern), as well as glass, brick, ceramic and slugs. We took it to a leisurely pace, with a map/photo workshop, frequent breaks in the shade and then finds washing. They were a lovely group with one or two really bright ones amongst them.

Site hours for the team on Wednesday afternoon: Tr. ④ nearly complete - just the section drawing to go. Tr. ③ has revealed the hardboard walls at two corners. Tr. ⑤ (over the shelter) is a big mass of concrete - the disturbed remains of the shelter. And in Tr. ①, it is a question of planning and photographs, before lifting and cracking through the silts. Lots of other relationships to sort out then a large section drawing!

The clay 'seal'?



Another glazed 'sach' / 5 (one from the late)

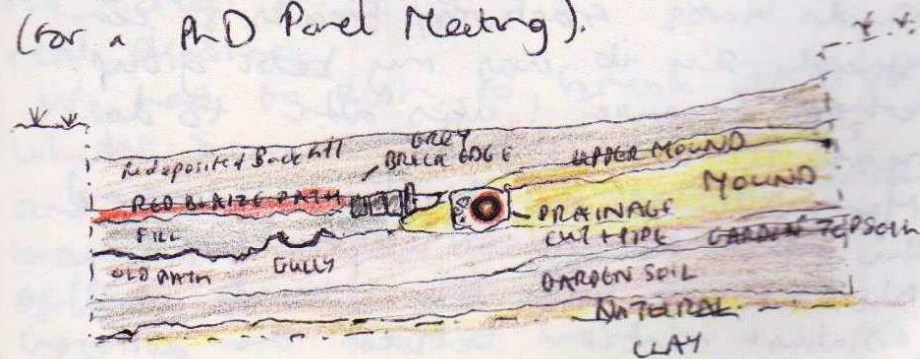
Wednesday 9th July 2013.

A visit from Alan Somers, Security Supervisor UoM, who has shown great interest in our dig, and brought down a couple of postcards to show us, that he had purchased on eBay. Two images we had not seen before - or at least, not with the same hand-tinting, and so he kindly allowed me to take photos of these for our archive. Lovely to have such interest from staff... Betty-Ann Boston visited later, with some of her colleagues as well.

Meanwhile, a school visit from Sale High School, who turned up for a bit of a longer day than planned! Anyway, we coped with an extended archive & finds session, trench bow and brick sculpture workshop. The pupils were really good, and the teachers lovely. We chose 3 to feature in the filming for a SARC video about the dig, and Ruth took them past the obelisk on the way out. She has been a complete star all through. Sale would like to dig next year, which we will try to arrange, and they have the follow up Creative Arts workshop next week which should be great.

Alex Burns also proved herself a star, organising well whenever she lays a hand. Kindly took charge of the finds washers, when Mandy was inundated with well preserved materials from the lake cists. These are now out, with a fine crop of old shoes (with brass tacks), string of twine, some folded paper, and various sticks & twigs (boat hooks?). Made the mistake of washing these a bit, to see what on earth they were... Sian rightly read me the riot act, as the conservators had visited this morning and asked for things to be left in the fill so they could remove them. Fair enough!

The trenches are coming along well. Tr. ① needs quite a bit of sorting out (and a lot of recording) before Friday. Tr. ③ bottomed out to day in the centre. Tr. ④ nearly complete, with some good sections drawn. Really enjoyed puzzling it all out with them, in Steph's absence (for a PhD Panel Meeting).



Hannah also off for a funeral (that of her grandfather), so not on site. Coping with a school group, filming, a discussion with the publisher from "PEN + SWORD" (Eloic), PhD students, 3 benches, first Aid incidents... quite a lot to juggle!

Thursday 11th July 2013.

I wasn't sure if our last group of schoolchildren would show up, but they did - and what a fantastic group they were too! Southern Cross, near Southern Cemetery, just brought out 4 children, from a school which I think specialises in behavioural issues/needs.

These lads were amazing - one had a tendency to wander off, but he had a chaperone, whilst the others were bright, articulate, thoughtful and made some leaps of logic which were impressive.

They couldn't dig this year but we had an extended site tour, ponds handling and ponds washing, and they pieced together a lovely clay pipe and noticed conjoining sheds across fractures/breaks. I can honestly say it was my best group... perhaps because I was able to do nearly 1:1 with them.

Meanwhile, all the digging is done and the bench recording well underway. Nick let loose with the concrete drill to establish relations between the different

layers, and we watched in awe as he demolished the padding pool and lattice concrete to leave really neat sections. Admirable.

Helped out in Tr. 3 with a section drawing, and will most likely finish off the other one tomorrow. Frank (our artist!) has produced some amazing images for us, but dislikes the accuracy required of a section drawing. Strange!

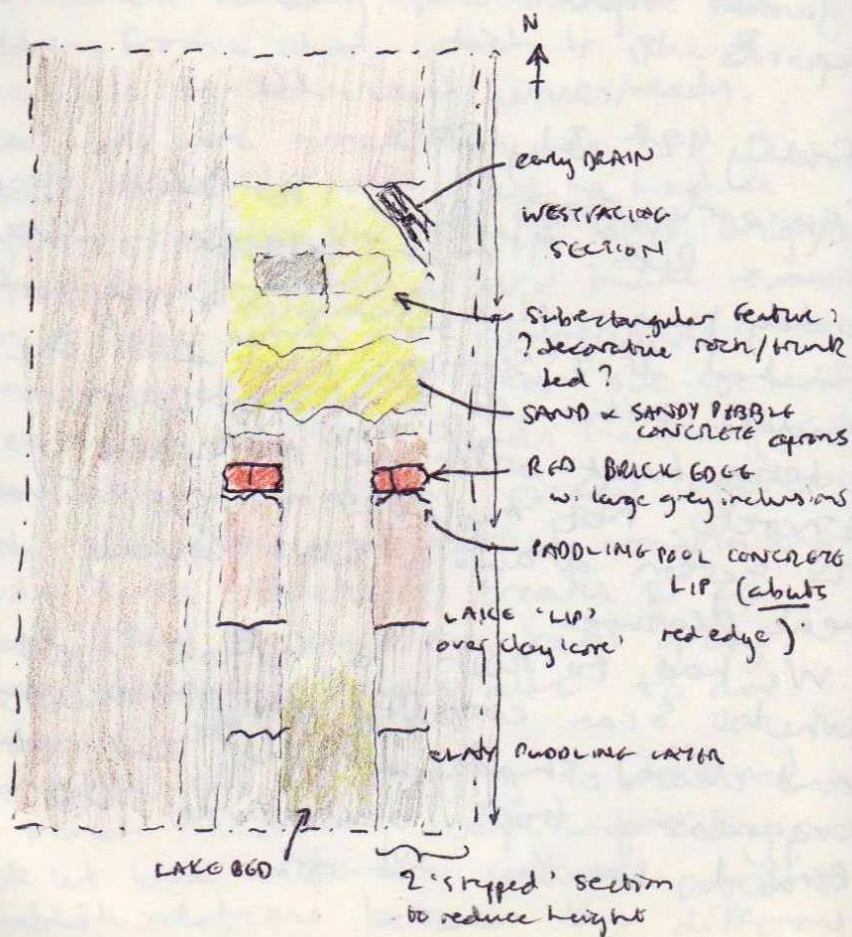
Samples now being taken of the key layers eg. pre-park land surface and "garden" soil in Tr. 4, or lake deposits Tr. 1.

Friday 12th July 2013.

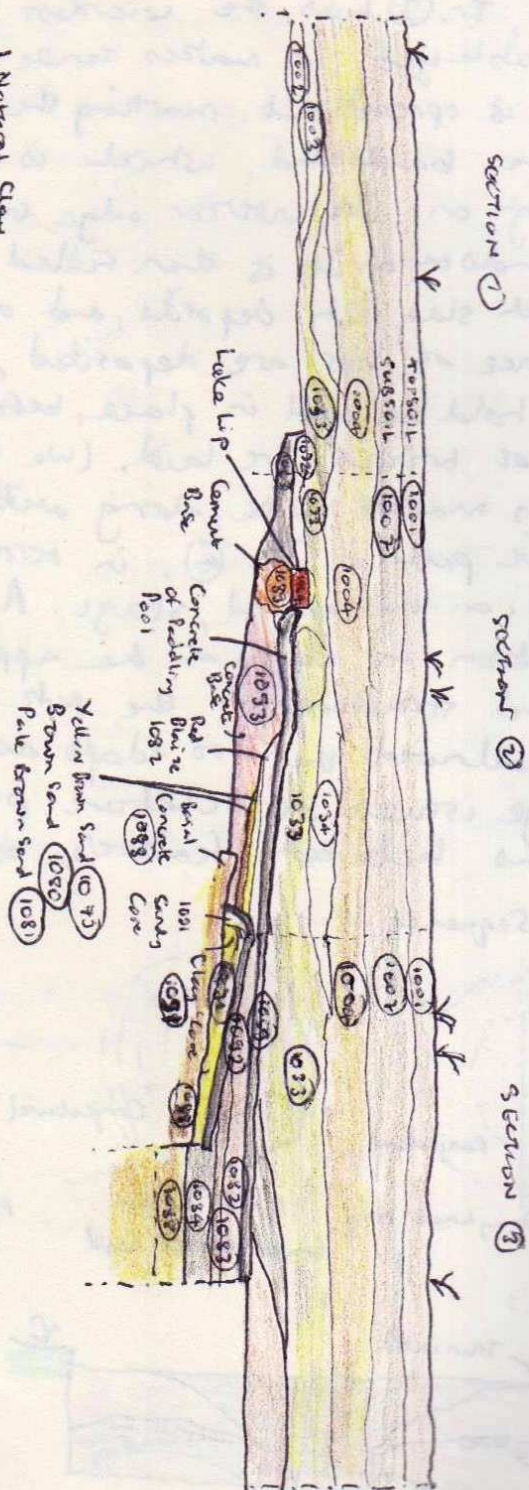
An early start in Tr. 1 for Nick, Hannah, Sian & Ruth. 9^{am} or section to draw today, plus a plan, samples & registers. Finished Tr. 3 section and did the middle section of Tr. 1, working in interse heat with the reflective concrete. Not my idea of fun! Though the section drawing was lovely - a real pleasure.

We had to rush to finish it all off, whilst Sian corralled the students and cleared sheds of tools and records, organising trips backwards and forwards to the school.

Machine watched as the school emptied out -- to little avail! They removed some of spoil from the side but didn't prioritize the concrete rubble, saying that they would take this away in the truck. But by the end, the retaining was too low (and will subside of course) whilst there was a mound of soil left - so they spread this over the trench... it looks awful! so much for the but cutting and rolling...! Lord knows what Ken will say....



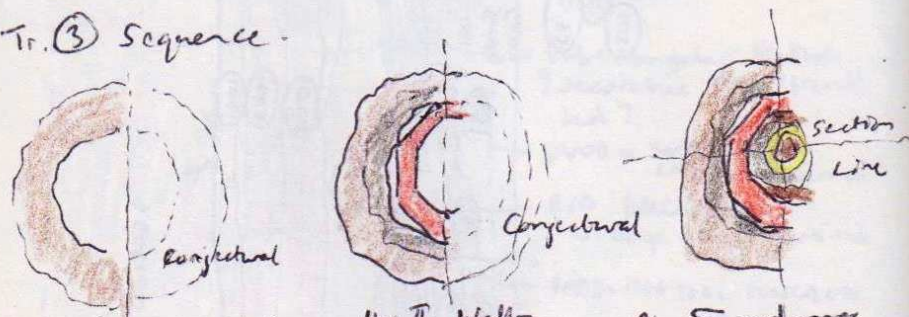
1. Natural Clay
2. concrete tipped lake w red brick lip edge
3. Lake Fill
4. Puddling pool cap, abutting old red rim edge of lake
5. Infill of pool
6. levelling layers
7. Subsoil/capsoil



Finally, Tr. ③ has the widest sequence imaginable yet it makes sense! A 'doughnut' of clay is spread out, marking the approximate area of the bandstand, which is then slightly cut through on its interior edge to construct the bandstand. It is then filled in around the edge with slag rich deposits, and on the interior, a sequence of tips are deposited, 'mounding up' to hold the wall in place, before the upper courses of bricks are laid, (we think!).

Yet this makes sense, along with the tentative path in Tr. ④, in terms of a planning, on-the-ground, stage. A rough demarcation in clay, of the approximate place and structure of the park features, which allowed them to adapt as initial drainage issues or relative positions/relations between features, became clear.

Tr. ③ Sequence.

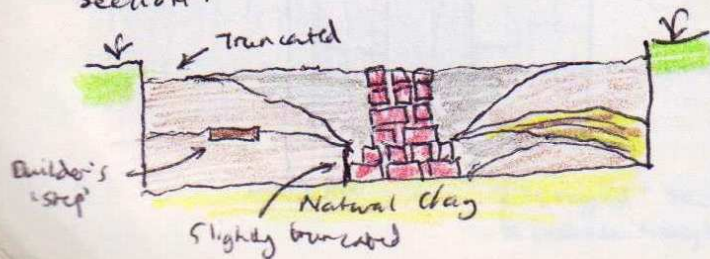


Ph. I: 'Doughnut' ring of spoil

Ph. II: Wall - lower courses laid

Ph. III - dumps into interior

SECTION:



EDUCATIONAL ACTIVITIES SUMMARY.

FRIDAY 9th SEPTEMBER

VIIth Form visits

Dig/Finds Washing

15-30

(+ wet weather Music/Sculpture activity)

SATURDAY 10th SEPTEMBER

YAC

10.30-12.30pm YAC

2 hrs digging
of tower

MONDAY 12th SEPTEMBER

PRIMARY SCHOOLS

10-12pm Tower } Dig/Finds Wash
+HKS } Drama Workshop

Madlock } 2x 30
Heald Place }

12.30-2.30pm

TUESDAY 13th SEPTEMBER

MANCHESTER ACADEMY

30 total

i) Bandstand: music in parks, costs/considerations
↳ programme design

ii) Sculpture activity

Resources:

Laminated photocopies.

Activity Packs

VIE 6am: 1/2 hr Trench
Tr. 1 Trowel-back over lake + Tr. 4 trowel back
(+ move into position side after lunch)
then after lunch 1/2 hr finds processing

YAC:
Tr. 1 Trowel back to follow lake edge & reveal
strat. .

SATURDAY 'OPEN DAY' 10-4pm
HC, MG, SJ, Ellen, Kat, Steph, Ruth
(3pm)
Ken show on friends Stell / Diana
Roger, Tom, (2pm)
Florence, Andrew, Mohsin, James
(3pm) (2-4pm).

Museum Volunteer: Patricia

Mo Tom Fri.
Andrew / Mo / Tom

10:30 / 11:30 / 12:30 pm

DAILY TOURS: Florence Roger James
1:30 / 2:30 / 3:30 pm
Roger Steve Andrew

MG on YAC + Ellen + Steph

Ruth & SJ on Memory / Artefacts } + set up
+ museum } tours

HC ? ~

COMMUNITY VOLUNTEERS.

"interesting... and enjoyable: more so than you'd think. I like going through the different contexts.

... I can go on to more volunteering with the museum. Looking to work with me another in a year."

Michael Frodsham

FRIENDS.

'Inspirational. Amazing that so many people are involved. A wonderful educ. exper.

Part of something important

Aged 70 I can spend all day on my knees and it's fine!

Change in dynamics; great activity and painstaking work!

Gill Hoad-Reddick

"Actively working on finding the history and lots of people are asking what we're doing. And that's good." Ken Shore.

BLOG - Xavierian College:

Julian Carty

Dream Aid: hidden burial chamber
A-levels; Hist, Bio, Arch, Drama
Archaeologist

Three pence coin.

"It didn't occur to me to expect but I really enjoyed it. I learned how to use the trowel and"

"hard work but enjoyable"

Tad Davidson.

"that rush of excitement to find something old" Lizziwe Fembo.

"I liked finding out what the bit was used for"

Samrawit Gebru

"pleasantly surprising - large scale"

Thomas Johnson

"- surprised there is no one with a head!"

Matt Thompson

"I preferred the hands washing... seeing things come to light" Poppy Bramwell

"Super - an rare opportunity, for active learning: much appreciated"

Mike Wilson - teacher

"Building on experience"

Lucy Johnson

"Grateful for the opportunity"

Rachel Moore

~~Jess~~ Jess Dixon

Dream find: bone!

A levels: German, Hist, Arch, Engl Lit.

Don't know what I want to be!

Pottery stud.

"Learning differently rather than set in the classroom"

"Excellent progress, set to be very interesting & exciting second week." Nick Orelton.

BLOG: Primary schools. Diggers - Und.

Rugaiya

Dream find: Roman jewellery

A-levels: Hist, Class Civ, Engl. Lang, Geogr.

Ancient Hist & Archaeol.

"Really interest. to explore social contexts behind events of the past and the social activities that took place in it."

Mohsin.

Dream find: Roman weaponry.

A levels: Anc. Hist, Law, Engl. Lit.

Ancient Hist & Archaeol.

"Best thing - range of finds: anything from pottery to clay pipes... broad and interesting. Closeness to modern day is very intriguing."

PRIMARY SCHOOLS

Medlock Primary.

- "Fun and educating"
- "Amazing"
- "Great" "Awesome" "Fantastic"
- "I learned a lot" "The games and drama were fun"
- "Time of a lifetime"
- "I enjoyed digging - getting my hands dirty and finding stuff"
- "Some things can be found in unexpected places."

Heald Place

- "I enjoyed learning about how things were in the past"
- "Finding out how the past used to look"
- "I liked the objects best"
- "I liked seeing the archaeologist digging"
- "Exciting" "Wonderful" "Thrilling" "Fun"
- "Amazing"
- "I liked learning about different tools"
- "I've learned about the things that were here and when the park was built"
- "I liked learning about the materials they used"

- "The drama was fun"
- "The drama made the past realistic"

"I liked the Textile Trail best"

Robert Day (father)
Andrew Day - Ruth Day. (grand mother)
1784 ~~70~~ Thornton Road,
Manchester, Fallow Fields.
M14 7NS



ORAL HISTORY CONTACT.

MANCHESTER ACADEMY.

- 'Awesome' 'Intriguing' 'Marvellous'
- 'Interest' 'Helpful - diff. rooms and layers'
- 'Engaged Knowledge' 'Factual'
- 'Interesting' 'Want to do it again'
- 'Really enjoyed it again'
- 'I was happy I was picked to go'
- 'Got used to find objects'
- 'Excited to dig' 'Great'
- 'Educational'

learned 'brainwork'

'how to be successful.'

'getting along w. adults'

'we were given the independence
to do our own work, and when
we found things we felt
incredibly proud'.

Teacher - Sarah Gasky

'It was almost as if they were
competing. a challenge they enjoyed'

WORD CLOUD.

✓ 'the quiet car' - Ellen

✓ AAC trench coat - pink shirt forefront

Sukhvinder Kaur

Khadra Abdullah Somali

- ceramic seal decorative

confused, didn't know what it was,
ecstatic!

Thoroughly: check not part of allergic
reaction to latex. Also heat rash on
arms/wrists - check condition.

RISK ASSESSMENT ADDITIONS.

High Wind / Tree fall risk : X work

Asbestos risk : gloves / bag ... disturb.

Industrial debris / dust : gloves

Glass splinters & ~~dust~~ gloves

SITE RECORDS

- Have pictures of the site in the Trench folder
to help visualize / interpret it.

FIRST AID 2013

Adele - twisted / sprained ankle ; Thurs. 4th
July : taken to A & E, strapped up / painkillers
+ rest for 3 days / light duties.

Ellic / Anthony - heat exhaustion
(Mon 8th / Wed 10th July) : ^{phoned to check status} advised to go
home, drink lots, rehydrate & rest.

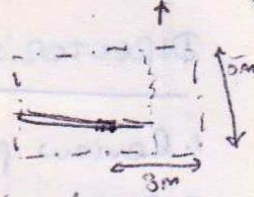
Manchester Academy pupil - dust in eye :
sterile eye wash + cold compress to
remove dirt + rest eye.

Sale High School pupil - cut finger from
coat hooks in site hut : cleaned w. sterile
wipe + plaster.

Ruth Colton - parallel grazes (?), cleaned

PLANS FOR 2012

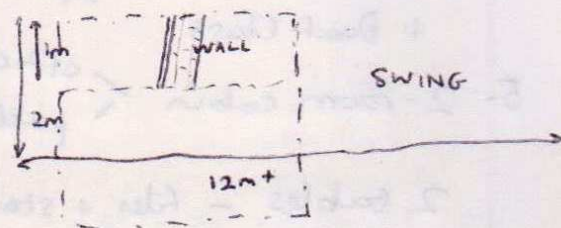
Tr. 4 : 'Mound' = redeposited clay
- need to bottom out to find old land
surface. Keep to W of E' edge ; c. 3m x 5m



? Test pit around slide to examine higher
level of mc

Tr. 3 Get E? extension under swing to catch
whole handstand

2m x ? check
on maps
at least 12m



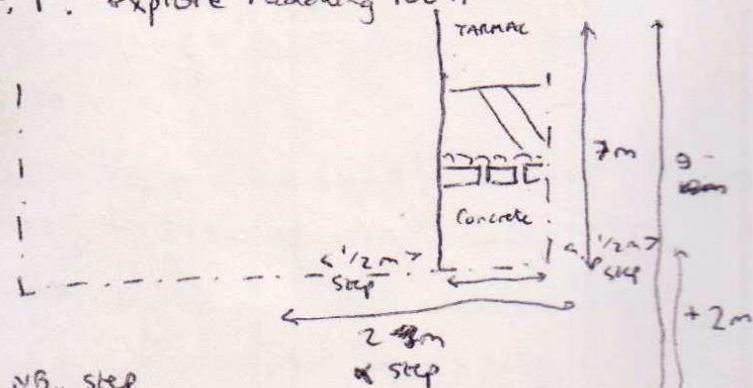
? Shelter Tr. 5

? Slot across path w. rail line

Slot across outer circular path round
roundel

Slot across path round handstand.

Tr. 1. Explore Paddling Pool / Lake : need to shore?
> 1.2m



NB, step

+ larger +2m zone for trailering

DIRECTOR'S BRAINSTORM

1. Review policies
2. Staffing - Nick as Manager
Richard Tuffin (Supervisor) Kat Fennelly → Finds?
Ellon Souter
→ delegation, forward planning,
TSR, cameras etc.
+ advance training for supervisors.
3. Review management of volunteers.
4. Schools ✓
+ Deaf Class
5. 2-room cabin

/	office
	public area

2 tables - files + stationery
- finds
Drawing boards: graph paper + pbrace
+ kits 'ready to go'
6. First Aid kits.
7. Cameras

PLANS FOR 2013

HLF Autumn 2013: WWI
- possible CBA AHRC bid

Finds: £2,500

→ SS

OSR - Kat? → Nic / HC for checking.

~ £600

AUDIT:

Mats
★ Mats +
Tools

EDUCATIONAL ACTIVITIES SUMMARY:

2012

Poetry Workshop, Medlock Primary School;

'DIG' CREATIVE ARTS PROJECT 2013

Workshops (Postcards/Poetry):

Contacts: Xaverian/Aquinas - ended term
Matthew Moss - cancelled
Claremont Primary - invite next
year (v. well behaved!)

EDUCATIONAL ACTIVITIES SUMMAR 2013

MONDAY 8th JULY 2013 Medlock Primary

Site Tours - Claremont Primary
- Home Ed Group.

TUESDAY 9th JULY 2013 Manchester Academy

WEDNESDAY 10th JULY 2013 Sale High School
- workshop + tour
Xaverian
- tour

THURSDAY 11th JULY 2013 Southern Cross
High School

SATURDAY 6th JULY 2013 YAC
YAC