



JONATHANHENDRYARCHITECTS Ltd

RIBA Chartered Architects



Unless indicated below, this drawing is for information only.
Do not scale. Use figured dimensions only. All dimensions to be checked on site prior to construction.
© Jonathan Hendry Architects Ltd

Project Home Farm, Somerby
North East Lincolnshire

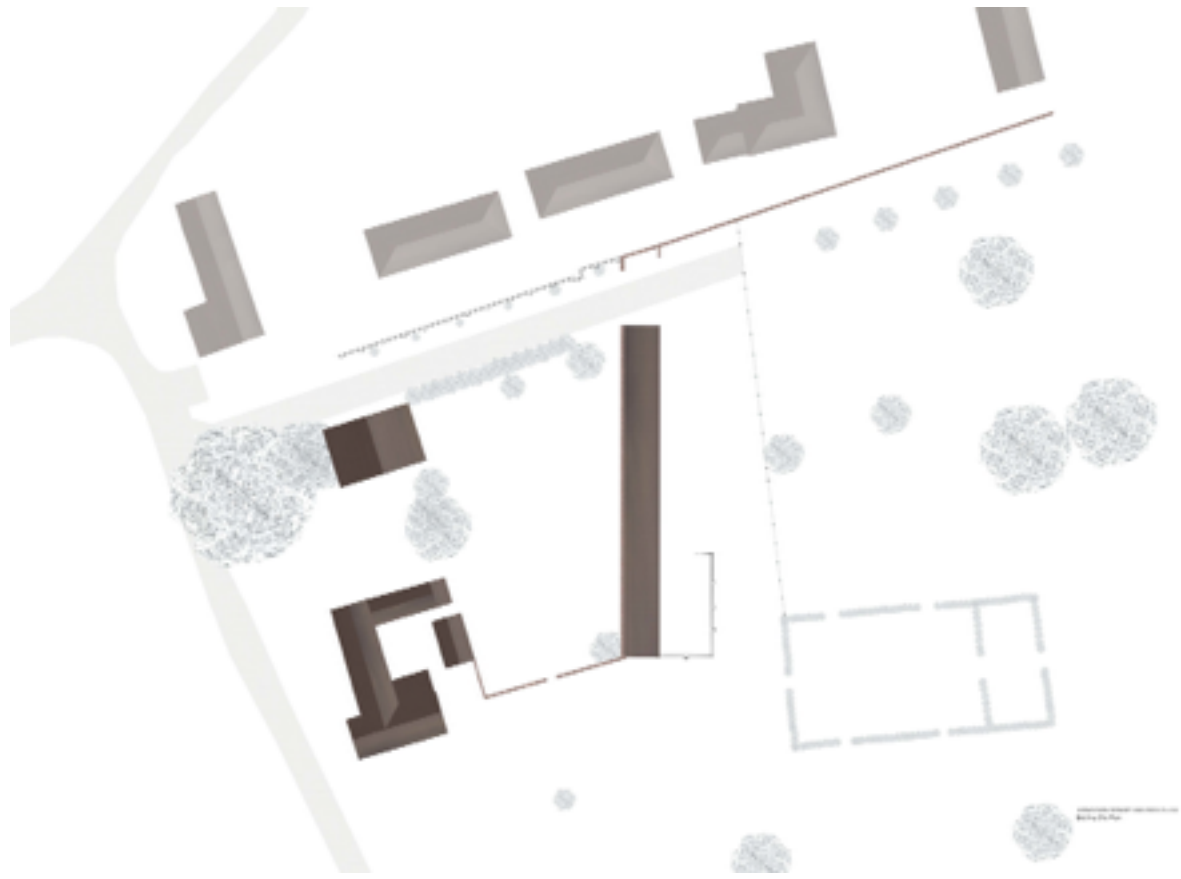
[JONATHAN HENDRY ARCHITECTS LTD](http://www.jonathanhendryarchitects.com)

15-16 Avenue 151a
Puddingthorpe Business Park
Hullin to Clay
SP10 6JH
01482 515151

T. 01472 80800
F. 01472 80800
W. www.jonathanhendryarchitects.com

Subject: Site Location Plan
Scale: 1 : 1250 Date: 23.06.2014

Original Size: A3
Drawing No: EX_001 Revision: 00





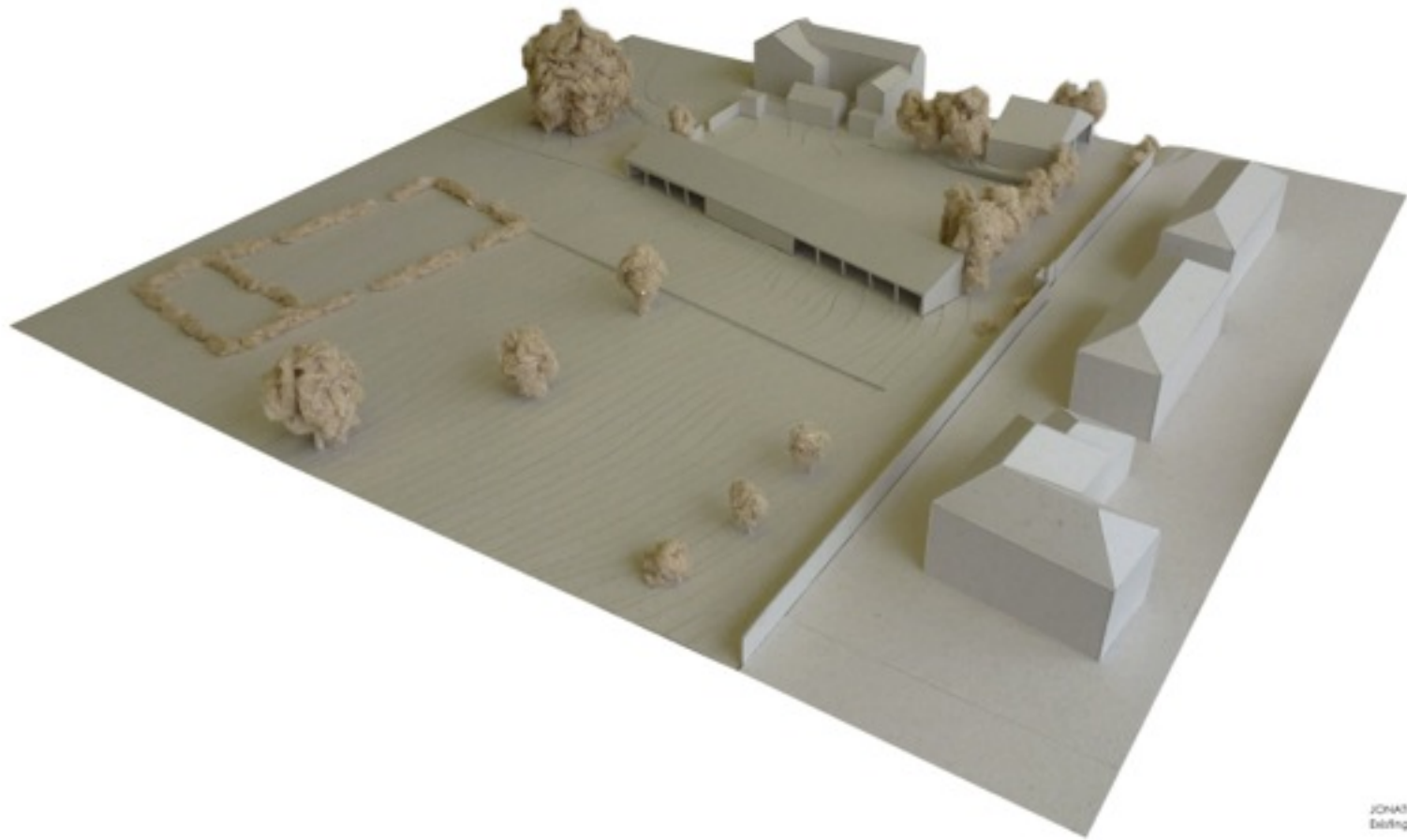


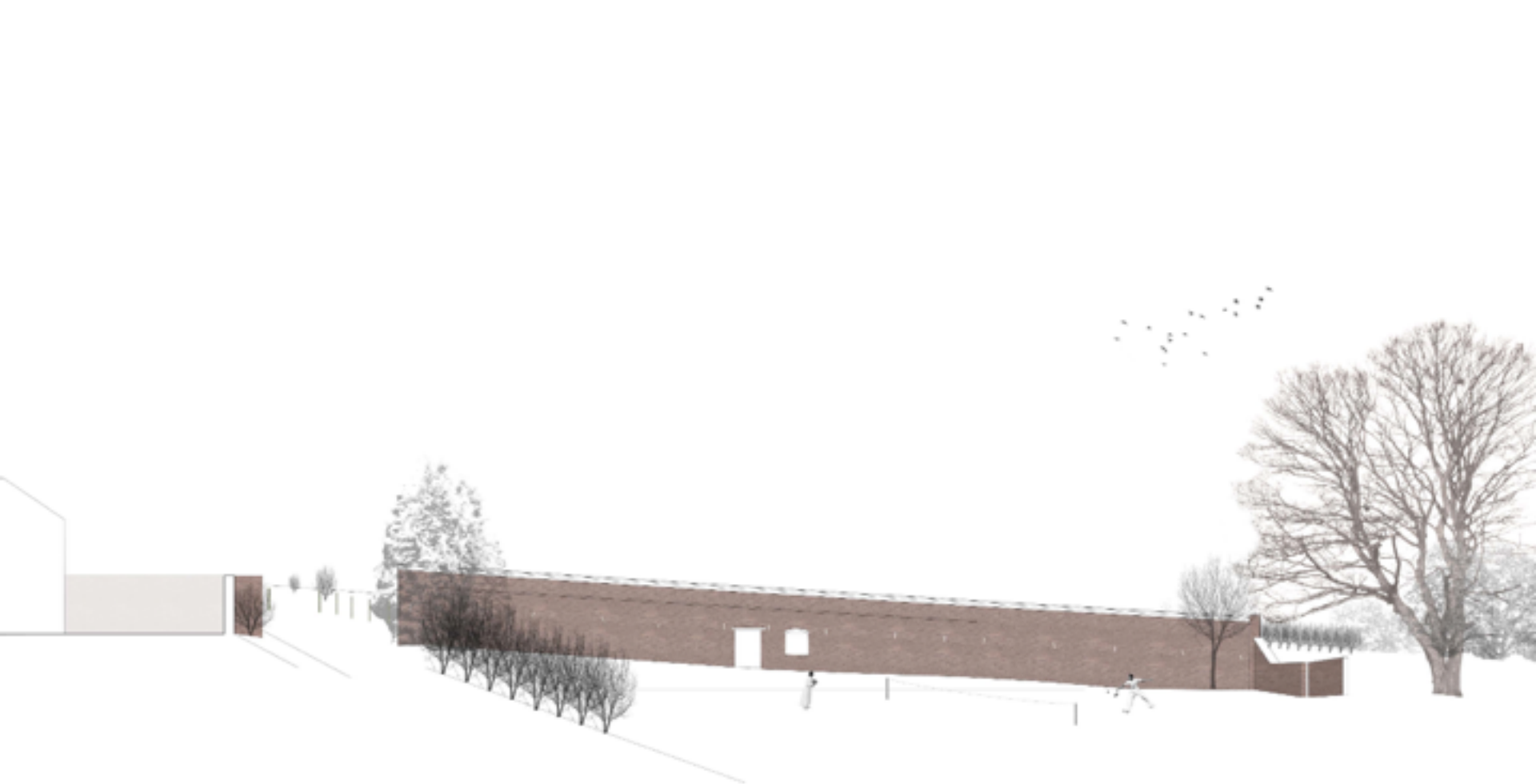




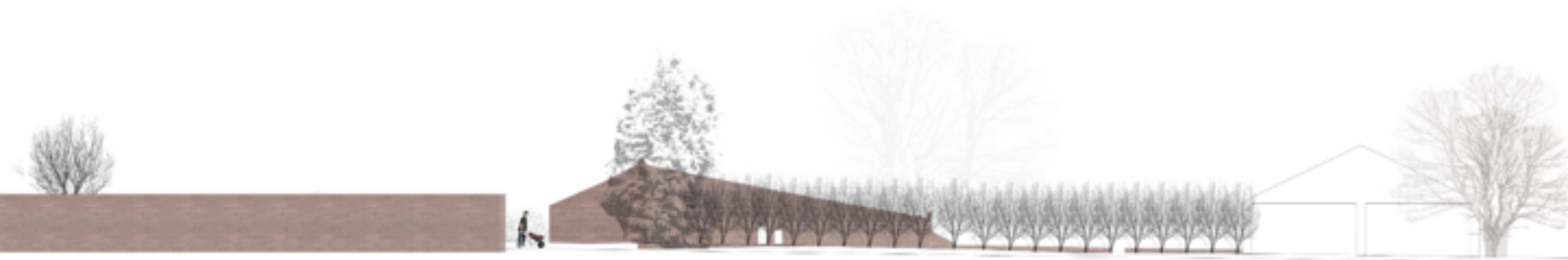






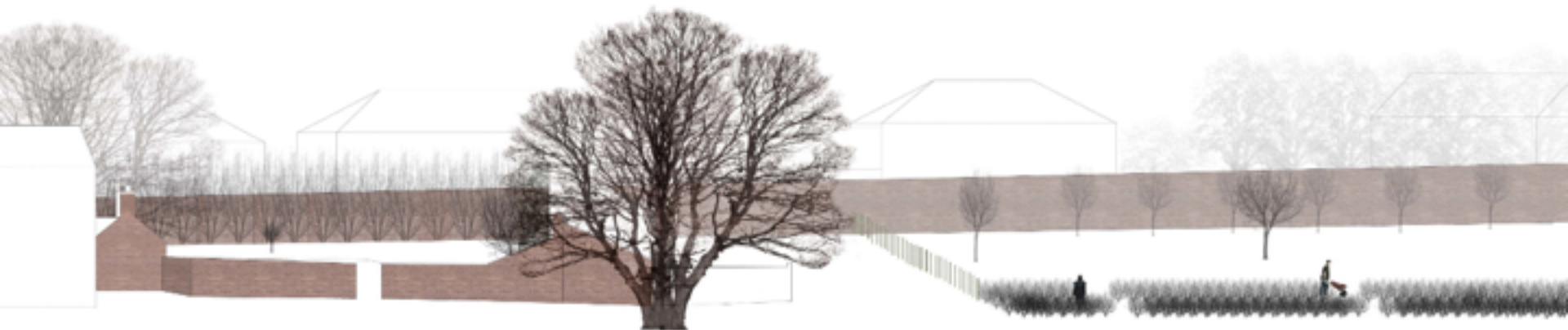


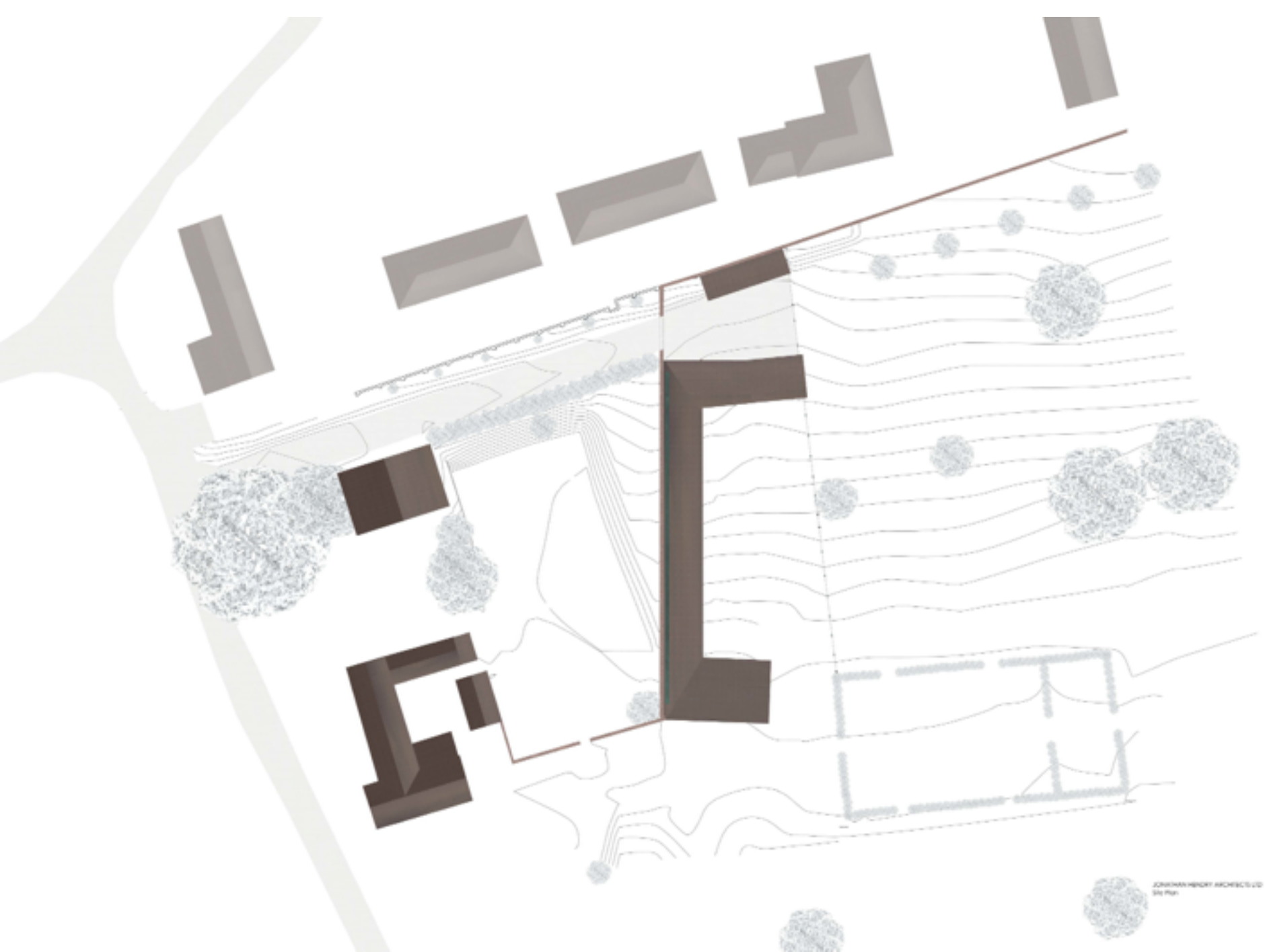
©2015 HENDEY ARCHITECTS LTD
Facing North-East

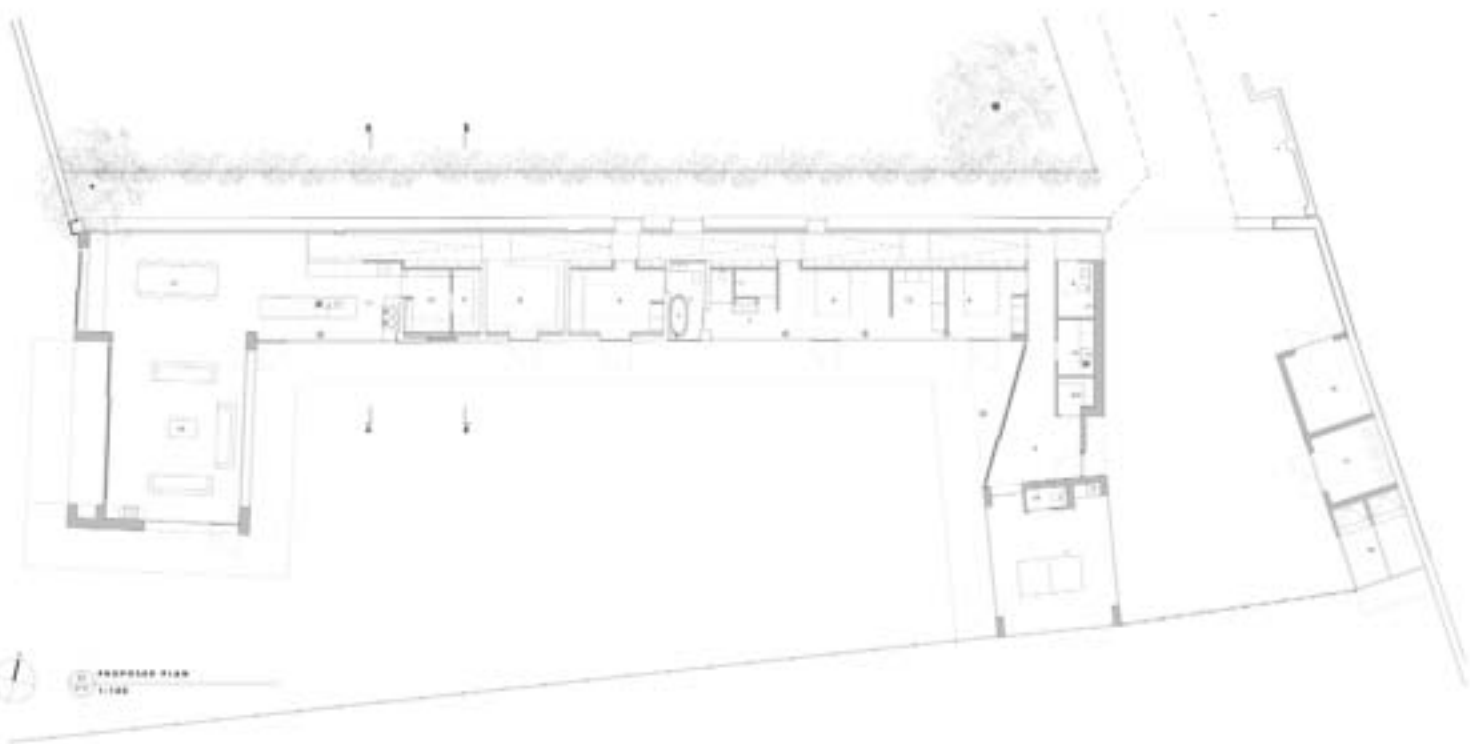




JONATHAN HENDEY ARCHITECTS LLP
Existing South Elevation







PROPOSED PLAN
1:100

ROOM LEGEND

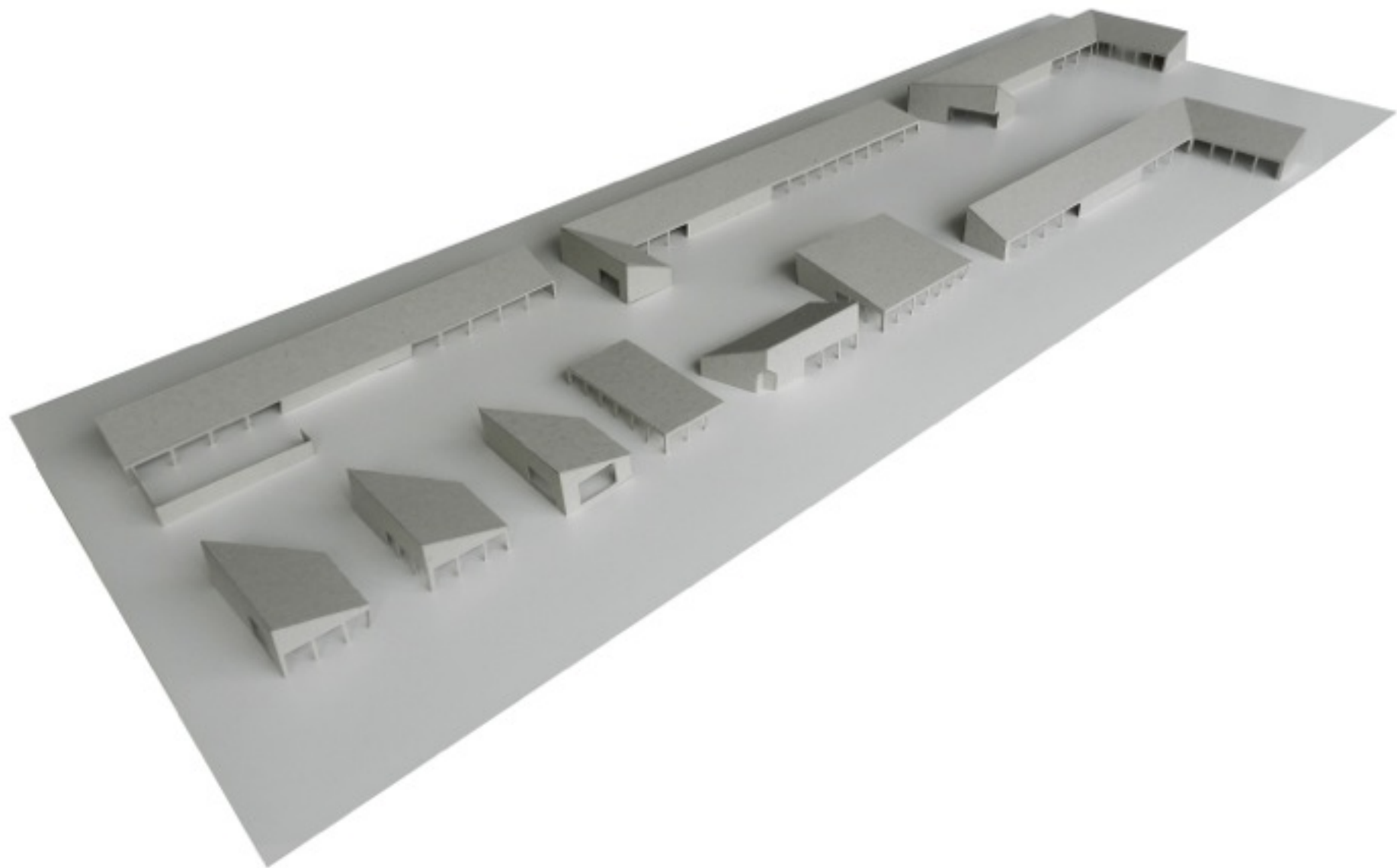
- 1. Garage
- 2. Bath
- 3. Bedroom
- 4. Dining Room
- 5. Living Room
- 6. Kitchen
- 7. Hallway
- 8. Staircase
- 9. Storage
- 10. Office
- 11. Utility Room
- 12. Laundry
- 13. Storage
- 14. Storage
- 15. Storage
- 16. Storage
- 17. Storage
- 18. Storage
- 19. Storage
- 20. Storage
- 21. Storage
- 22. Storage

EXTERIOR LANDSCAPE

- 1. Garden
- 2. Lawn
- 3. Walkway
- 4. Terrace
- 5. Deck
- 6. Pool
- 7. Fencing
- 8. Planting
- 9. Retaining Wall
- 10. Driveway

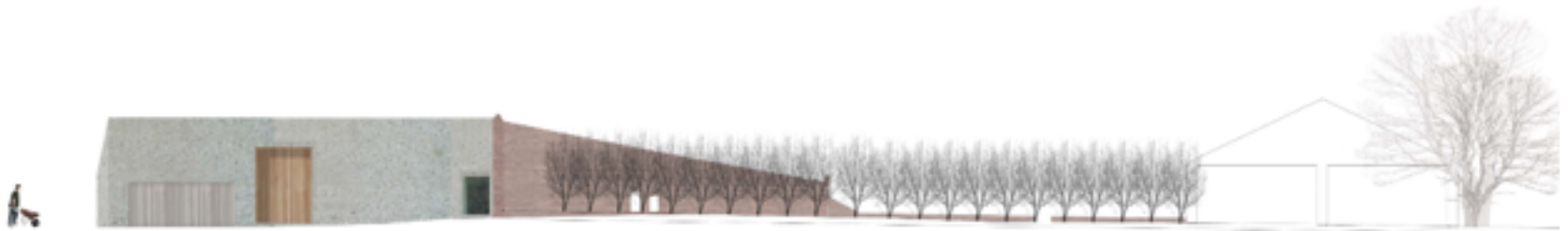
PLANNING

- 1. Planning
- 2. Planning
- 3. Planning
- 4. Planning
- 5. Planning
- 6. Planning
- 7. Planning
- 8. Planning
- 9. Planning
- 10. Planning
- 11. Planning
- 12. Planning
- 13. Planning
- 14. Planning
- 15. Planning
- 16. Planning
- 17. Planning
- 18. Planning
- 19. Planning
- 20. Planning
- 21. Planning
- 22. Planning
- 23. Planning
- 24. Planning
- 25. Planning
- 26. Planning
- 27. Planning
- 28. Planning
- 29. Planning
- 30. Planning
- 31. Planning
- 32. Planning
- 33. Planning
- 34. Planning
- 35. Planning
- 36. Planning
- 37. Planning
- 38. Planning
- 39. Planning
- 40. Planning
- 41. Planning
- 42. Planning
- 43. Planning
- 44. Planning
- 45. Planning
- 46. Planning
- 47. Planning
- 48. Planning
- 49. Planning
- 50. Planning



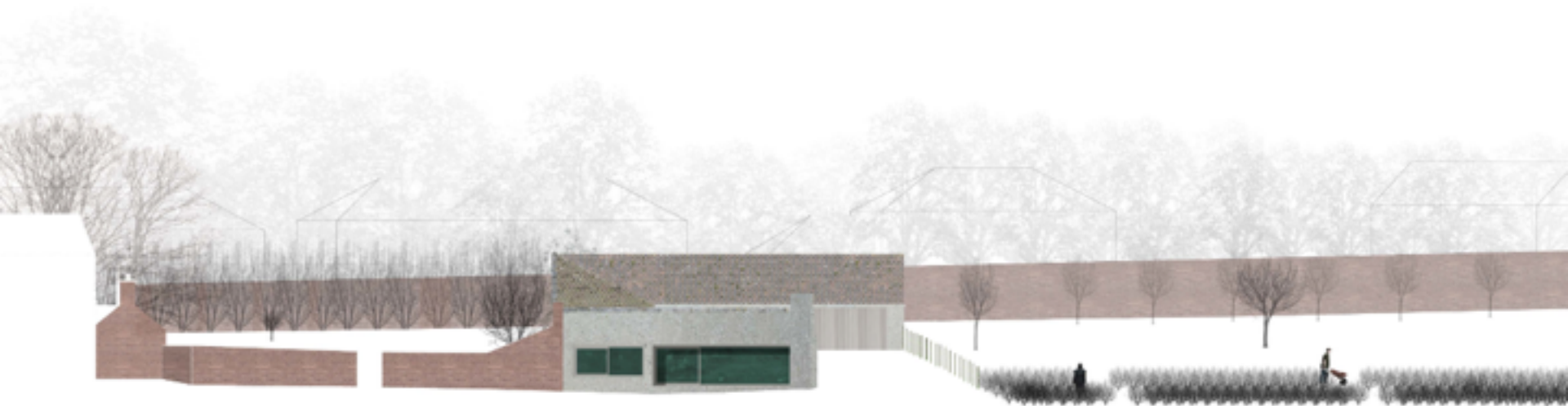




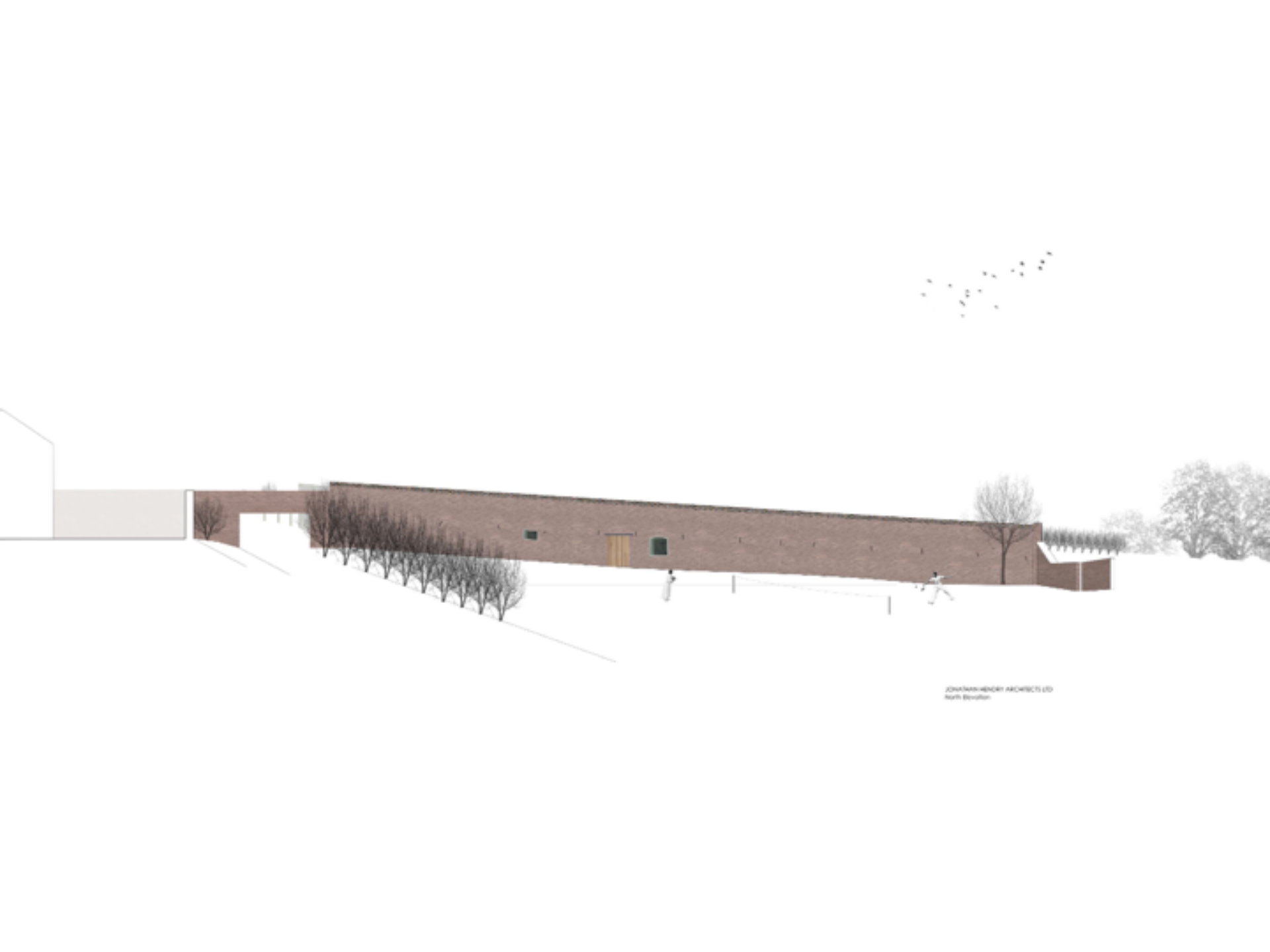


JONATHAN HENRY ARCHITECTS LLC
East Swanton





JONATHAN HENRY ARCHITECTS LTD
West Devon



JOHN HENRY ARCHITECTS LTD
North Devon





 EXISTING GROUND LEVEL



 EXISTING UPPER LEVEL



















GROUND FLOOR PLAN



FIRST FLOOR PLAN

Scale: 1/8" = 1'-0"

Project: [illegible]
Location: [illegible]
Date: [illegible]
Author: [illegible]
GA_1000

























Site Location Plan





GROUND FLOOR PLAN



FIRST FLOOR PLAN



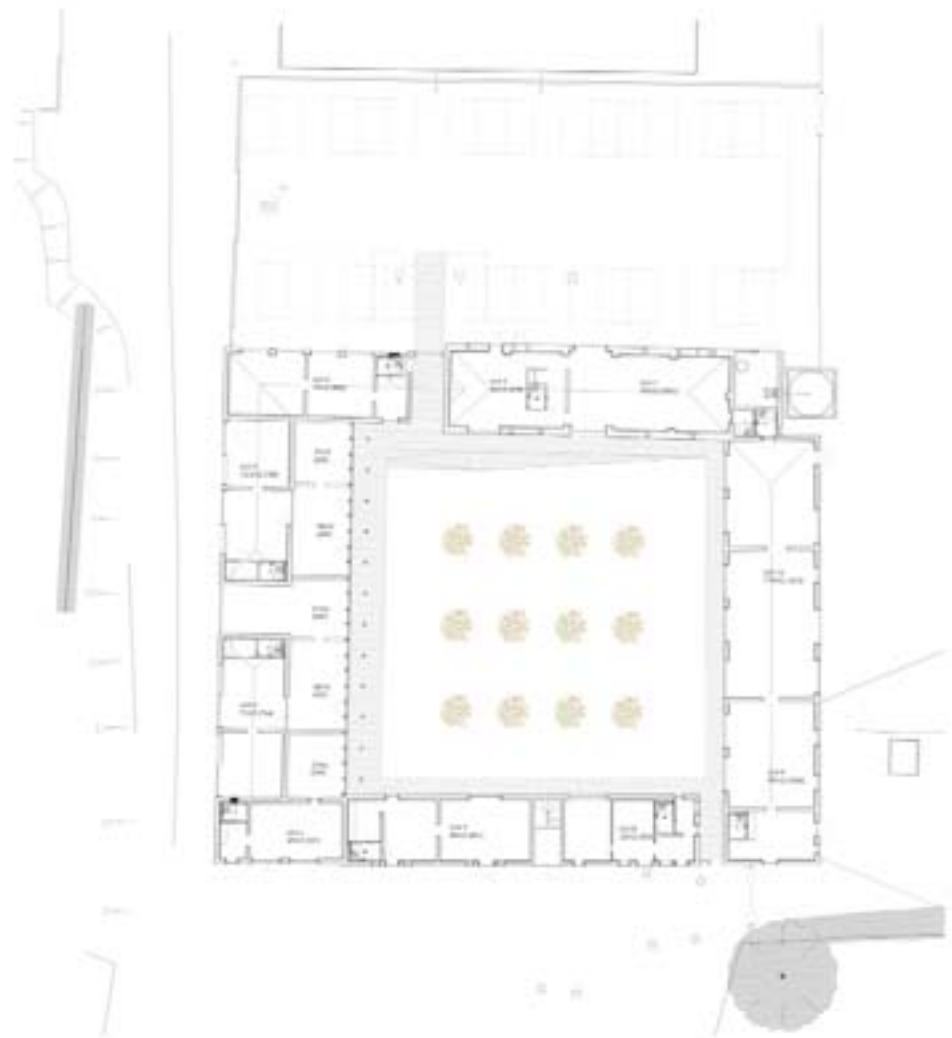
NO.	DESCRIPTION	DATE
1
2
3
4
5
6
7
8
9
10

EX 200-00









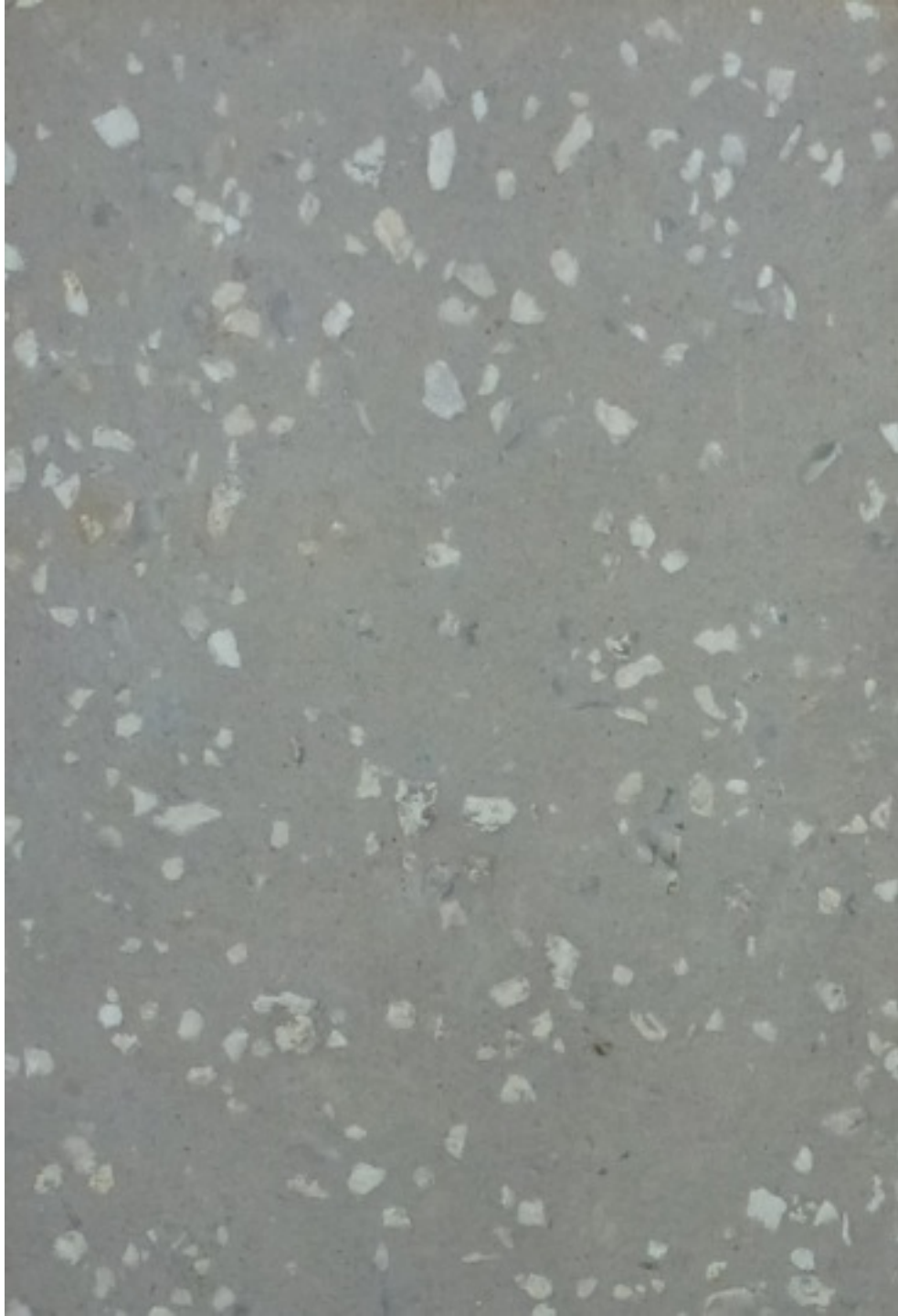
GROUND FLOOR PLAN



FIRST FLOOR PLAN

Room	Area	Volume
Kitchen	10.00	30.00
Service	10.00	30.00
Storage	5.00	15.00
Restroom	2.00	6.00
Corridor	10.00	30.00
Staircase	5.00	15.00
Other	10.00	30.00
Total	52.00	156.00





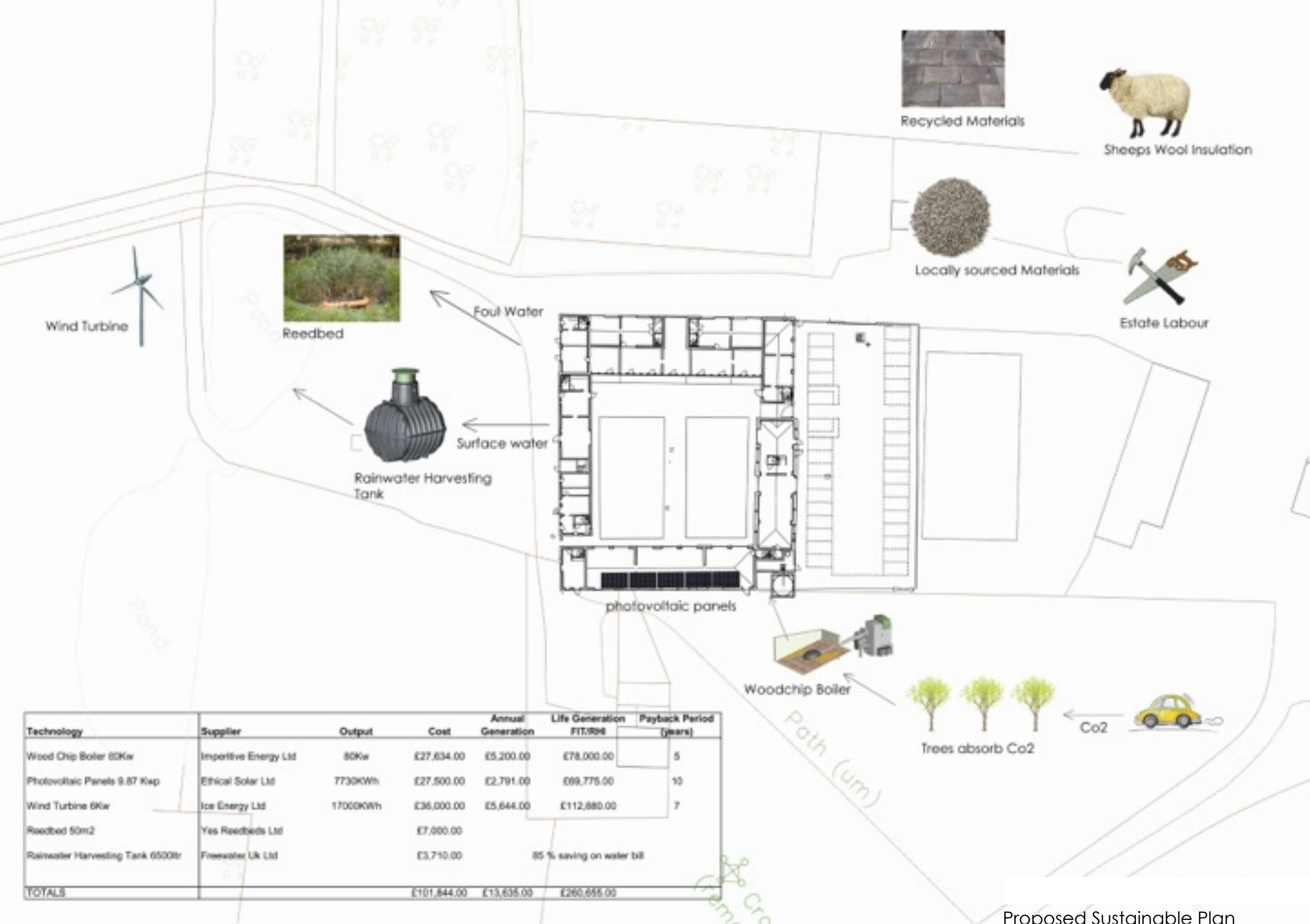






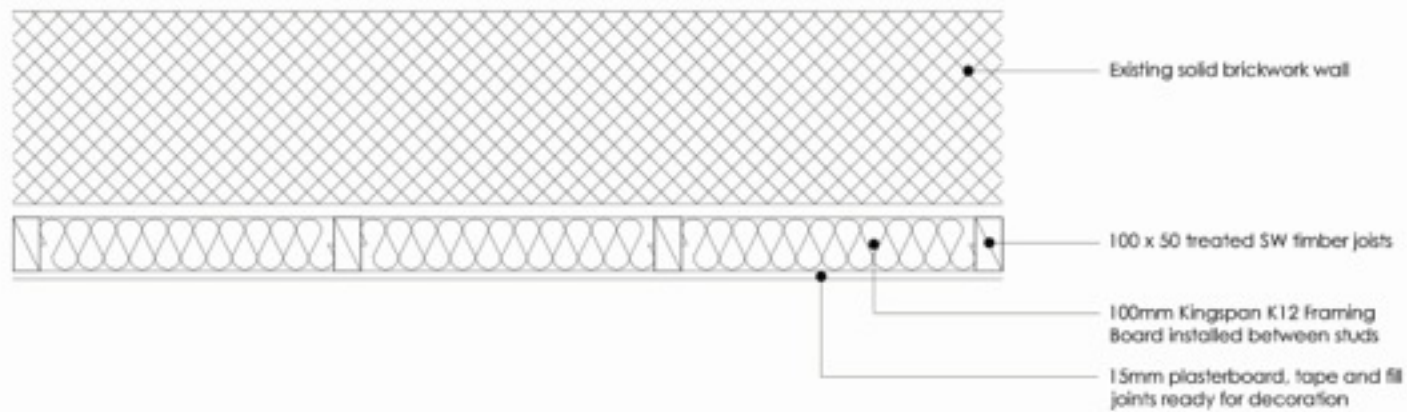






Technology	Supplier	Output	Cost	Annual Generation	Life Generation FIT/90%	Payback Period (years)
Wood Chip Boiler 80Kw	Imperitive Energy Ltd	80kw	£27,634.00	£5,200.00	£78,000.00	5
Photovoltaic Panels 9.87 Kw	Ethical Solar Ltd	7730KWh	£27,500.00	£2,791.00	£99,775.00	10
Wind Turbine 6Kw	Ice Energy Ltd	17000KWh	£36,000.00	£5,644.00	£112,880.00	7
Reedbed 50m2	Yes Reedbeds Ltd		£7,000.00			
Rainwater Harvesting Tank 6500ltr	Freewater Uk Ltd		£3,710.00		85 % saving on water bill	
TOTALS			£101,844.00	£13,635.00	£260,655.00	

Proposed Sustainable Plan

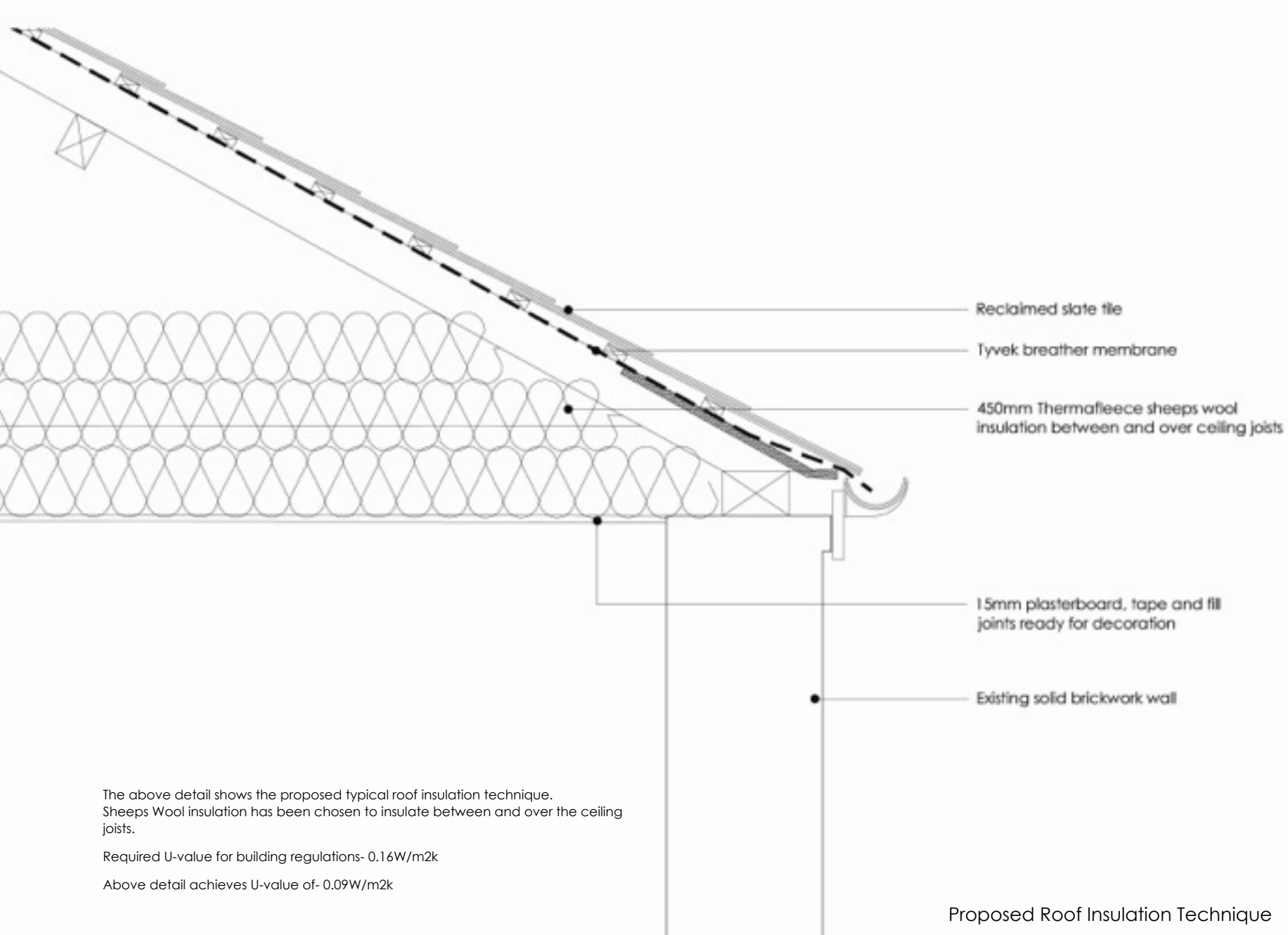


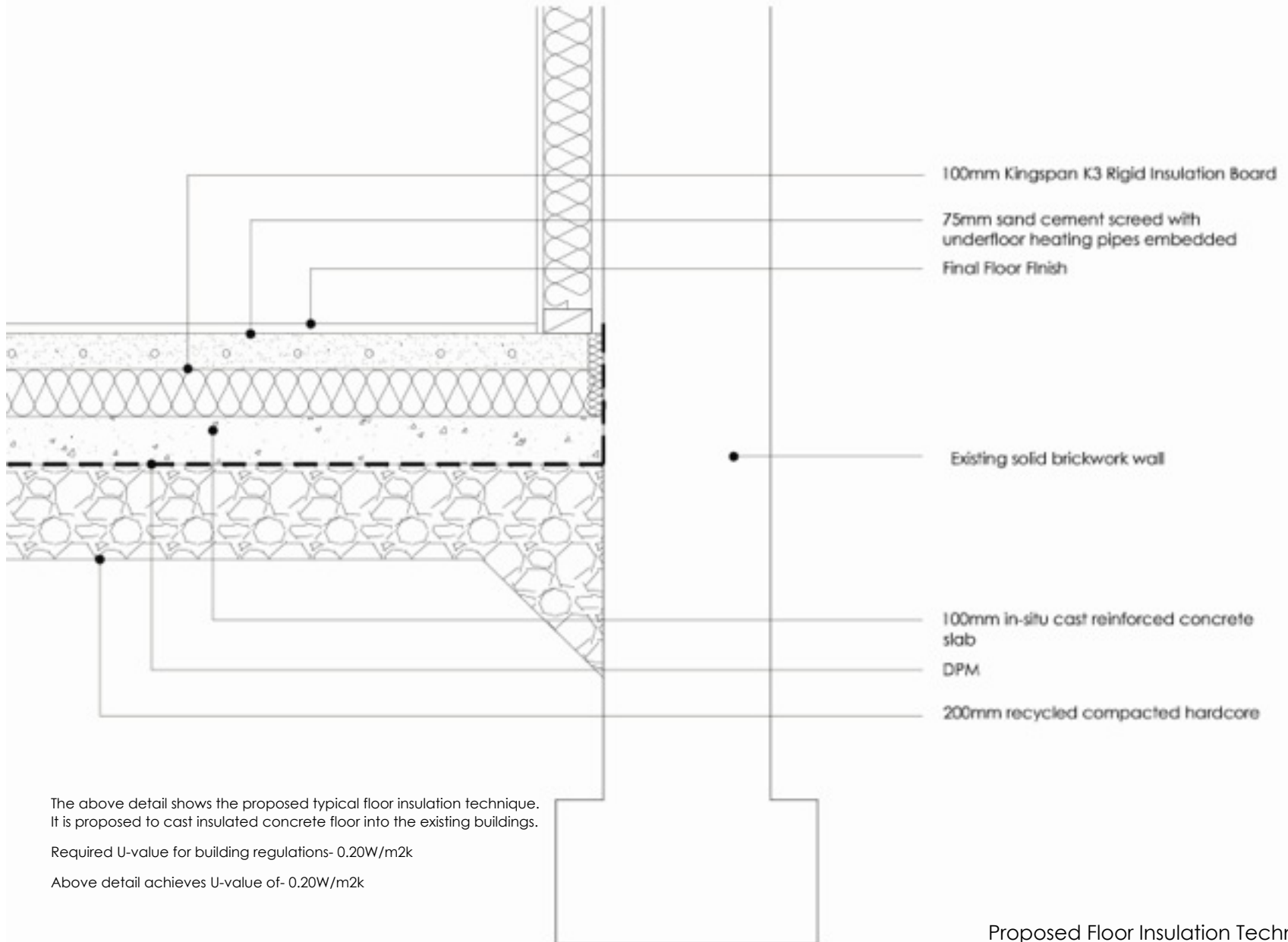
The above detail shows the proposed typical wall insulation technique.
 A phenolic board insulation has been chosen to maximise let-able floor area.

Required U-value for building regulations- 0.28W/m²k

Above detail achieves U-value of- 0.23W/m²k

Proposed Wall Insulation Technique





100mm Kingspan K3 Rigid Insulation Board

75mm sand cement screed with underfloor heating pipes embedded

Final Floor Finish

Existing solid brickwork wall

100mm in-situ cast reinforced concrete slab

DPM

200mm recycled compacted hardcore

The above detail shows the proposed typical floor insulation technique. It is proposed to cast insulated concrete floor into the existing buildings.

Required U-value for building regulations- 0.20W/m2k

Above detail achieves U-value of- 0.20W/m2k

Proposed Floor Insulation Technique

