



Plate 17 Scuff marks made on a wall by one of the water-wheels



Plate 18 The Fourneyron-MacAdam water-turbine from above showing portions of the stator and the gate (see Fig. 21)

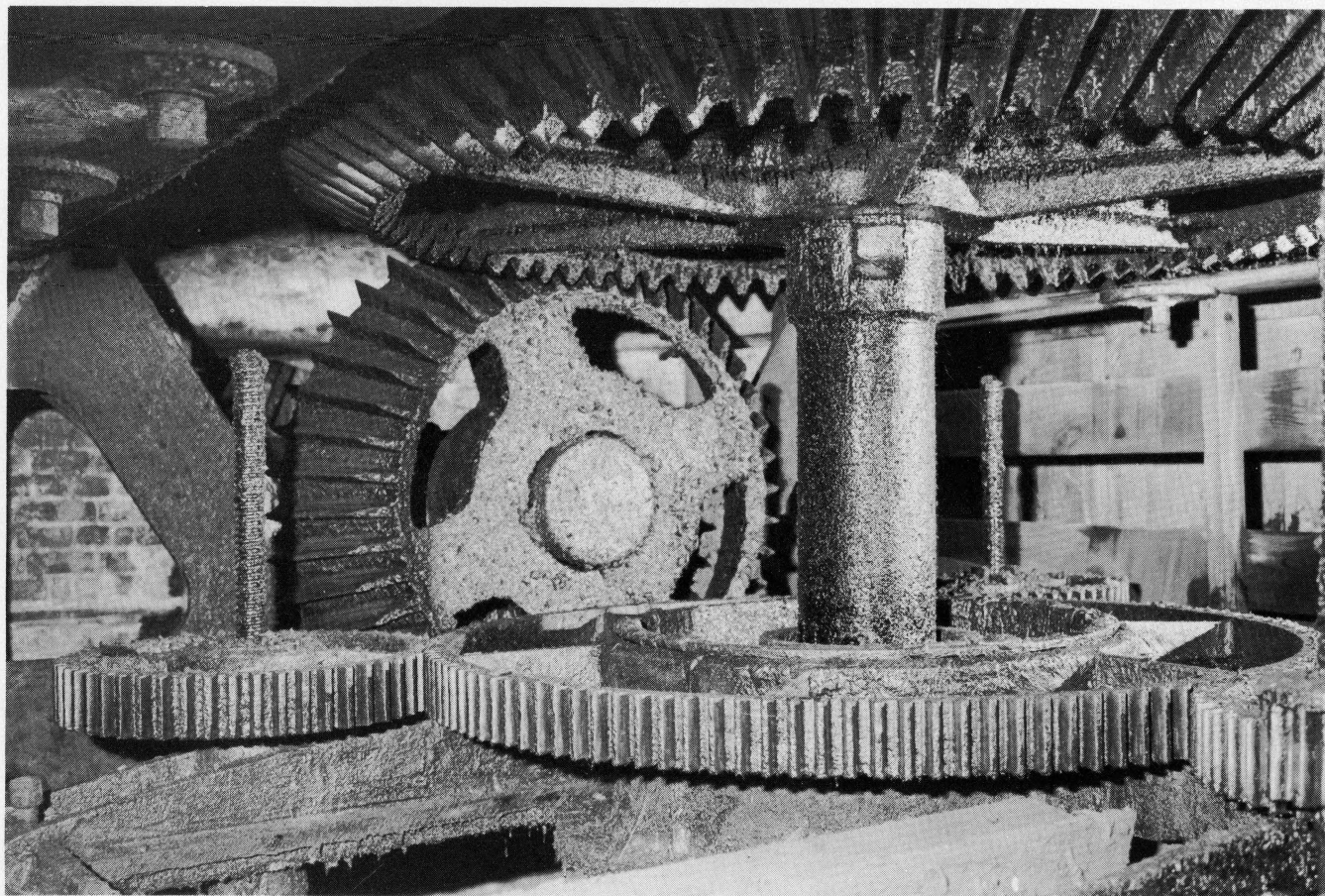


Plate 19 The crown-wheel and control gearing of the water-turbine (see Figs. 119, 21 and 22)



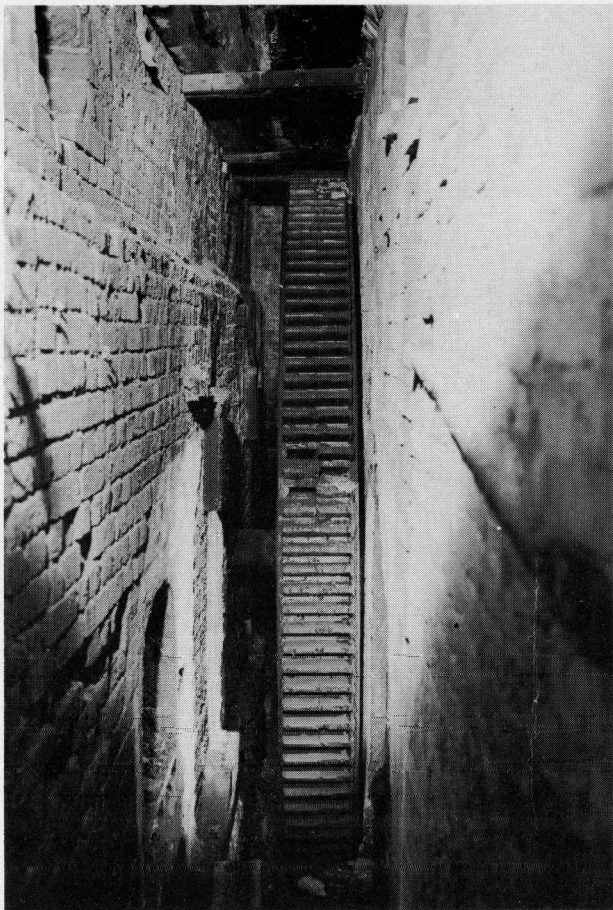


Plate 20 The turbine pit-wheel (see Fig. 19)



Plate 21 The line-shaft passing through the opening between Chambers C and D (see Fig. 19)

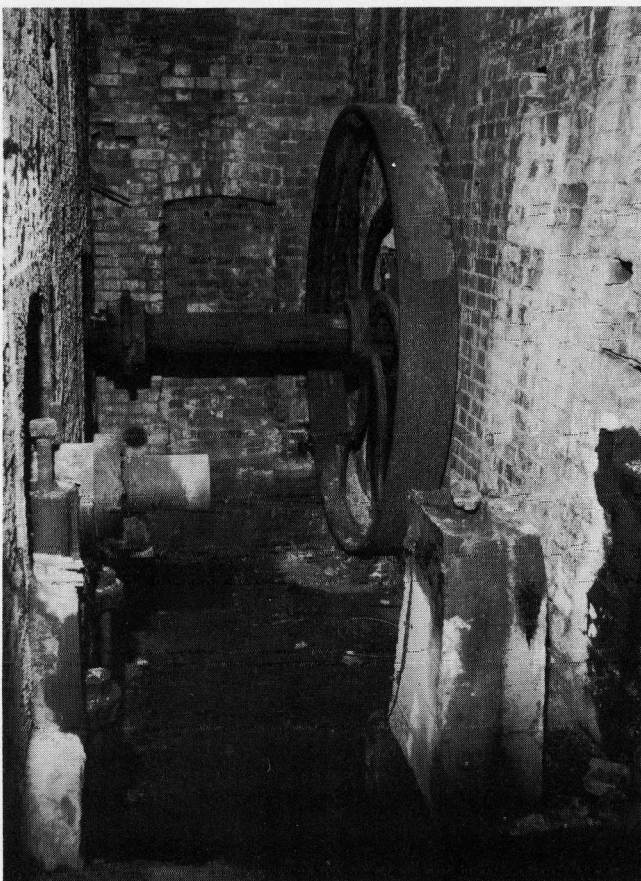


Plate 22 The belt wheel on the line-shaft in Chamber E (see Fig. 19)

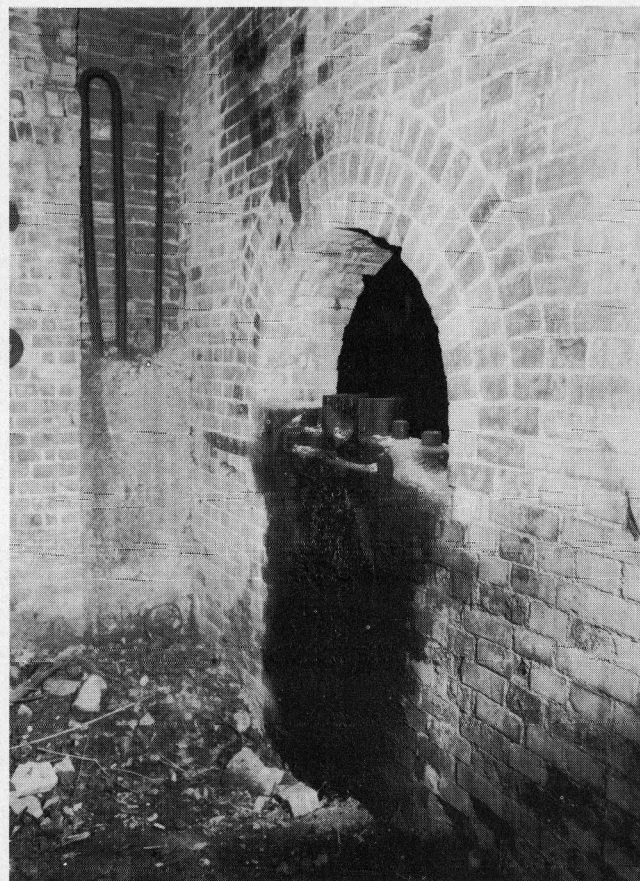


Plate 23 The opening between Chambers I and J which originally housed part of the line-shaft (see Fig. 19)





Plate 24 Interior of the Old Beam-Engine House or Chamber J of Fig. 19

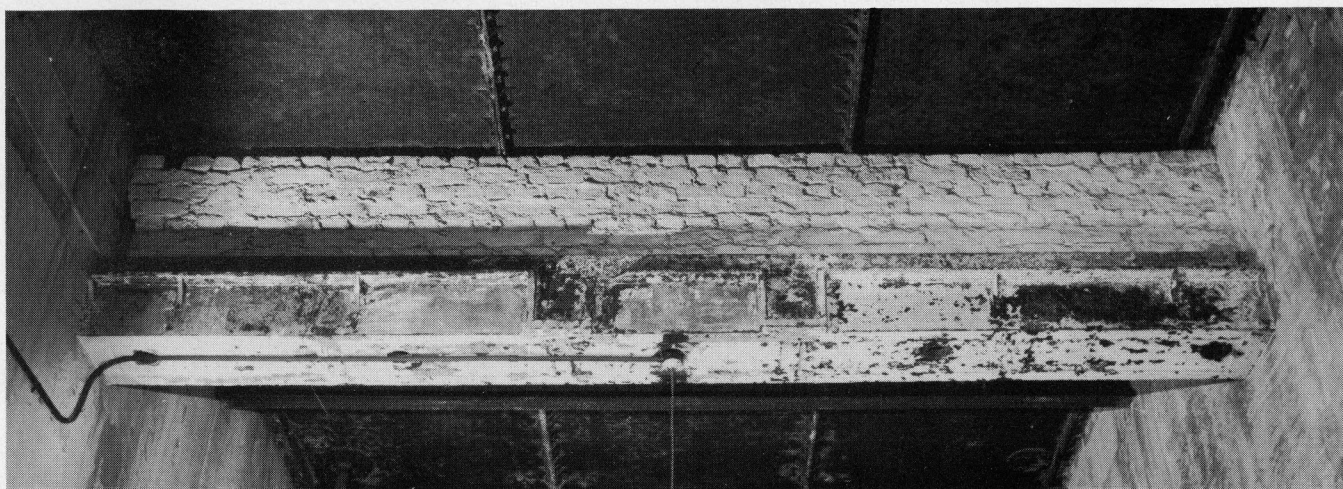
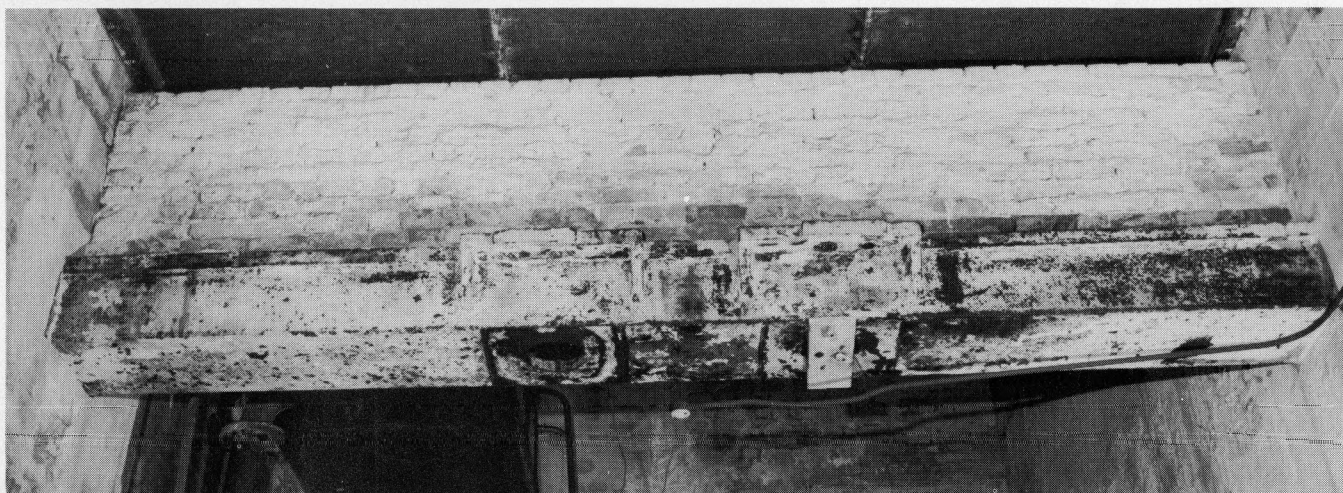


Plate 25 Transverse iron beams in the Main Beam-Engine House