

JOURNAL  
OF THE  
**Derbyshire Archaeological**  
AND  
NATURAL HISTORY SOCIETY

EDITED BY  
C. E. B. BOWLES, M.A., F.S.A.

---

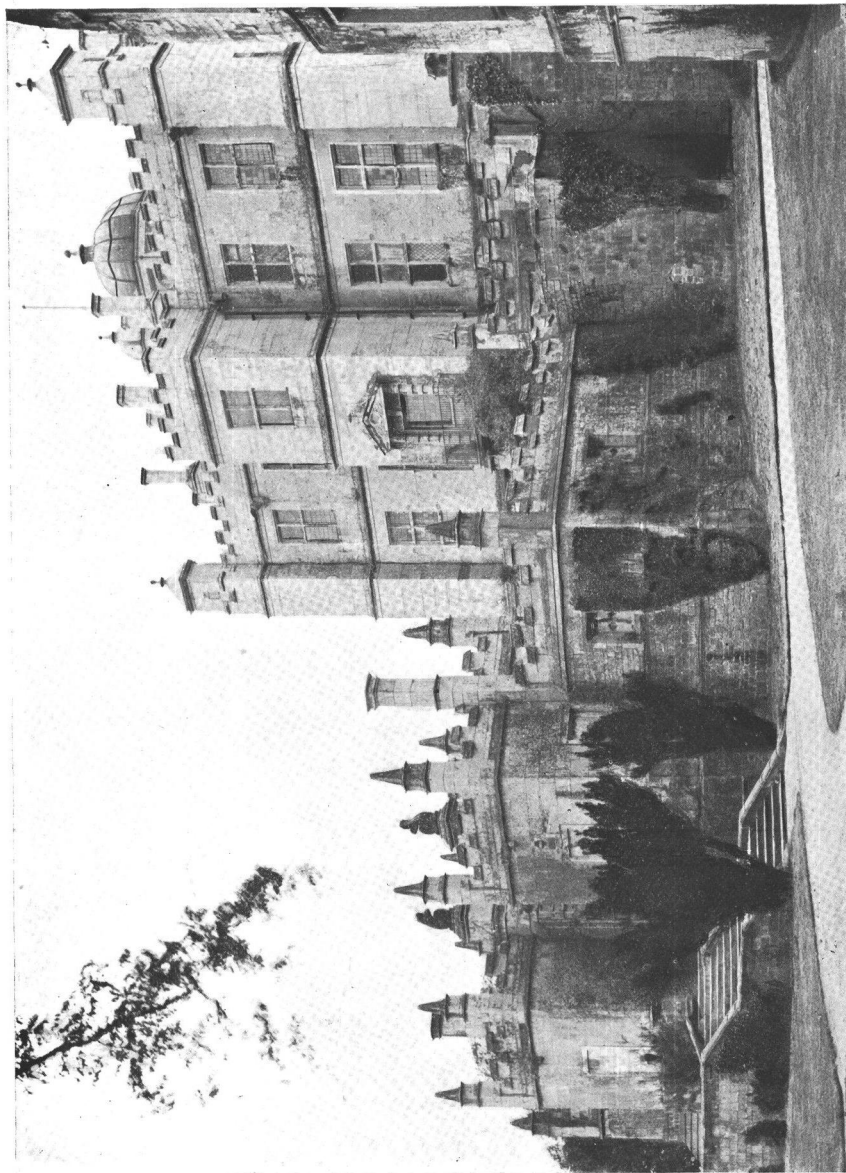
VOL. XXXVIII

---

JANUARY 1916

---

Printed for the Society by  
TITUS WILSON,  
AT HIS PRESS IN KENDAL.



*Frontispiece.*

BOLSOVER CASTLE.—SIR CHARLES CAVENDISH'S HOUSE AND FORECOURT.

*Photo. by G. H. Widdows.*

## CONTENTS.

---

	PAGE
BOLSOVER CASTLE.	
BY P. H. CURREY .. .. .	I
PLANT GALLS OF THORPE AND DISTRICT.	
BY HAROLD J. BURKILL, M.A., F.R.G.S. .. .. .	29
ON THE MIDLAND CIRCUIT.	
BY HENRY KIRKE, M.A., B.C.L. .. .. .	49
THE CHURCHES OF ROMAN BRITAIN.	
BY PHILIP LYTTLETON GELL, M.A. .. .. .	75
ROMAN BUXTON.	
BY EDWARD TRISTRAM, F.S.A. .. .. .	84
THE CHURCH WALL AT NORTON AS A MEASURE OF TAXATION.	
BY S. O. ADDY, M.A. .. .. .	105
WIRKSWORTH CHINA.	
BY THOMAS S. TUDOR .. .. .	117
THE OLD COURT-HOUSE AT ALFRETON.	
BY WILLIAM STEVENSON .. .. .	127
THE VILLAGE CROSS OF KING'S NEWTON.	
BY THOMAS S. TUDOR .. .. .	131
CHELLASTON ALABASTER.	
BY THE REV. R. LETHBRIDGE FARMER .. .. .	135
WIRKSWORTH GRAMMAR SCHOOL AND ALMSHOUSE.	
BY C. E. B. BOWLES, M.A., F.S.A. .. .. .	147
THE REGISTERS OF GLOSSOP PARISH CHURCH, 1620-1731.	
BY REV. HENRY LAWRENCE, M.A. .. .. .	159

CONTENTS—*continued.*

DERBYSHIRE ELIZABETHAN DEPOSITIONS, AND A PROOF OF COMING  
OF AGE OF A.D. 1300.

BY REV. J. CHARLES COX, LL.D., F.S.A... .. 183

ZOOLOGICAL RECORD FOR DERBYSHIRE, 1915.

BY WILLIAM SHIPTON, M.B. .. .. 217

LEPIDOPTERA.

BY H. C. HAYWARD .. .. 222

EDITORIAL NOTES .. .. 229

---

PROCEEDINGS OF THE SOCIETY

LIST OF OFFICERS .. .. iii.

HON. SECRETARY'S REPORT .. .. v.

BALANCE SHEET .. .. viii.

LIST OF MEMBERS .. .. x.

## ILLUSTRATIONS.

---

	PAGE
BOLSOVER CASTLE—SIR CHARLES CAVENDISH'S HOUSE AND FORECOURT .. .. .	<i>frontispiece</i>
BLOCK PLAN OF BOLSOVER CASTLE .. .. .	<i>facing</i> 5
BOLSOVER CASTLE.—THE HALL .. .. .	,, 11
BOLSOVER CASTLE.—ENTRANCE TO PRINCIPAL STAIRCASE ..	,, 13
BOLSOVER CASTLE.—THE OCTAGON .. .. .	,, 15
BOLSOVER CASTLE.—THE RIDING HOUSE .. .. .	,, 18
BOLSOVER CASTLE.—THE TERRACE .. .. .	,, 20
VIEW FROM THE WEST, OF SUGGESTED SITE OF ROMAN FORT AS IT APPEARED ABOUT SEVENTY YEARS AGO .. .. .	,, 87
THREE VIEWS OF THE ROMAN MILE-STONE FOUND AT BUXTON	,, 104
ORDNANCE SURVEY MAP, BUXTON DISTRICT .. .. .	,, 104
WIRKSWORTH CHINA.	
PLATE I. FIG. 1 MANOR HOUSE TEA SERVICE .. .. .	,, 117
PLATE II. FIGS. 2, 3, AND 4 .. .. .	,, 123
PLATE III. FIG. 5 .. .. .	,, 124
PLATE IV. FIGS. 6 AND 7 .. .. .	,, 125
PLATE V. FIGS. 8, 9, AND 10 .. .. .	,, 126
ORIGINAL PILLAR FOUND IN THE OLD COURT-HOUSE. MODEL	,, 127

ILLUSTRATIONS—*continued.*

THE VILLAGE CROSS OF KING'S NEWTON.		<i>facing</i>
PLATE I.—VIRGIN AND CHILD .. .. .	.. .. .	131
PLATE II.—FIG. 1, ST. MICHAEL; FIG. 2, THE CRUCIFIXION	.. .. .	131
PLATE III.—FIG. 1, A SAINT; FIG. 2, VIRGIN AND CHILD	.. .. .	131
JUG OF ROUGH RED WARE .. .. .	.. .. .	144
FRAGMENT OF POTTERY .. .. .	.. .. .	144
DOORWAY LEADING INTO OLD GRAMMAR SCHOOL YARD, WIRKSWORTH .. .. .	.. .. .	<i>facing</i> 147
GRAMMAR SCHOOL AND ALMSHOUSE, WIRKSWORTH .. .. .	.. .. .	149
RUBBING FROM BRASS ON THE WIRKSWORTH ALMSHOUSE .. .. .	.. .. .	158
AUTOGRAPHS .. .. .	.. .. .	164
CARVING ON OLD PEW AT CASTLETON, 1661 .. .. .	.. .. .	166
PLAN OF SMALL POST-MILL, STANDING AT NORTON .. .. .	.. .. .	195