

A LONG BARROW ON LONGSTONE MOOR, DERBYSHIRE

By J. BARNATT, N. CARVER AND S. J. PIERPOINT
(Department of Prehistory and Archaeology, Sheffield University)

Fieldwork in 1979 has indicated a new long barrow in Derbyshire, on Longstone Moor (SK 19797475). The monument is marked on Ordnance Survey maps and recorded in Marsden (1977) as a bronze age round barrow, but close inspection indicates that it is much more likely to be a neolithic long barrow.

The barrow is orientated almost directly east/west, and rises sharply at the eastern end where an Ordnance Survey triangulation point had once been positioned (Fig. 1). The monument is 44 metres long and about sixteen metres wide, rising to almost two metres in height at the eastern end. It is likely that this barrow is similar to Gib Hill (SK 15816332), in that a round barrow seems to have been placed on top of an earlier long barrow.

The neolithic chambered tombs of the Peak are well known, but the earthen long barrows are rarely mentioned. The two other certain examples are at Harratt Grange (SK 09838059) and Gautries Hill (SK 09838119), over twelve miles away in northwest Derbyshire. There have been no excavations recorded of earthen long barrows in the county.

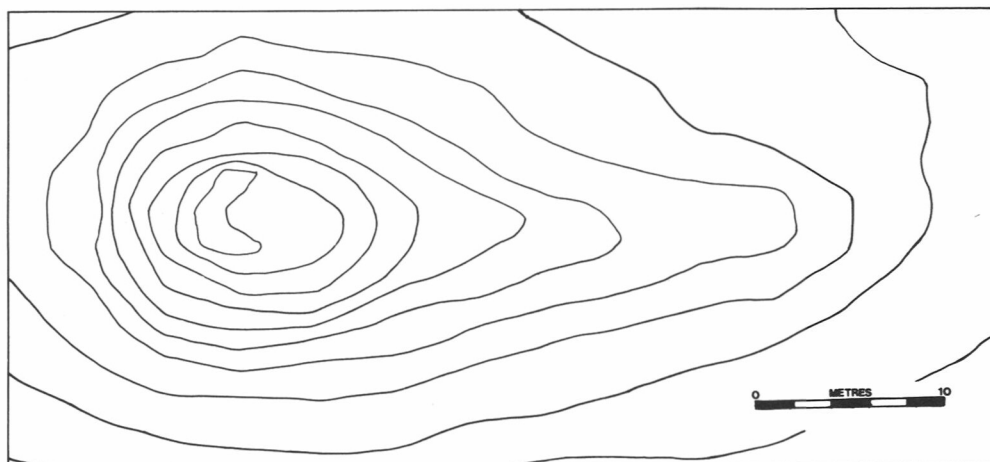


Fig. 1 The long barrow on Longstone Moor: plan. Contours are at 25 centimetre intervals, with an arbitrary datum. North is at the base of the map.

ACKNOWLEDGEMENTS

We would like to thank Carole Barnatt, David Fine and Louise Murray for help in surveying the barrow.

REFERENCE

Marsden, B. M. (1977) *The Burial Mounds of Derbyshire*.