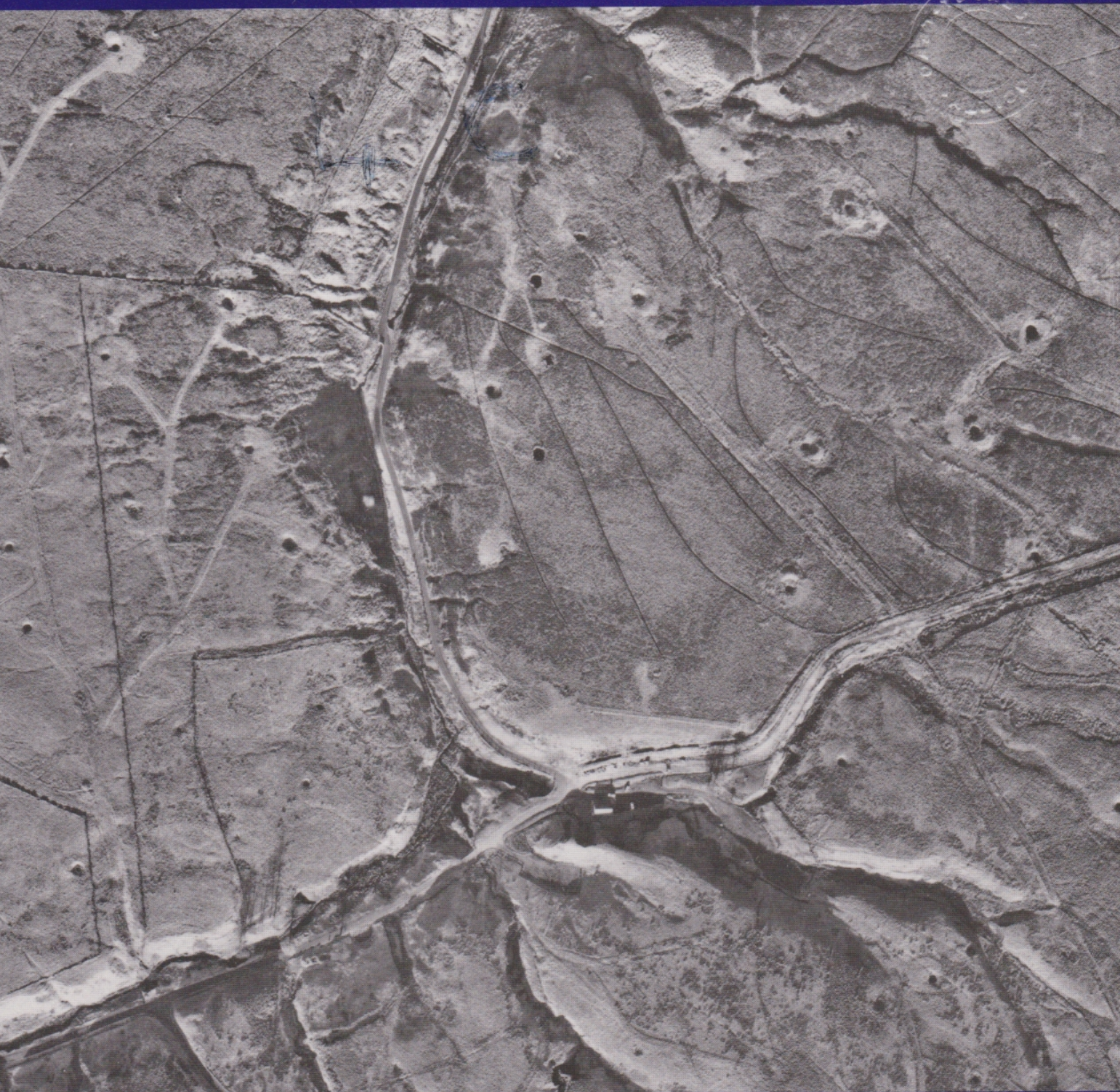


DERBYSHIRE ARCHAEOLOGICAL JOURNAL

40



Volume 117

1997

40

THE
DERBYSHIRE
ARCHAEOLOGICAL
JOURNAL

VOLUME 117

FOR THE YEAR

1997

Editors:

PAULINE BESWICK, BA, FMA, FSA, MIFA
DUDLEY FOWKES, BA, MA, PH.D., FSA



1997

ISSN 0070 3788

CONTENTS

SURVEY AND EXCAVATION AT DIRTLOW, BRADWELL MOOR, 1987–1988 Martin J. Dearne with contribution from Daryl Garton	5
A RESURVEY OF THE RINGBANKS ON PARWICH MOOR AND THE EXCAVATION OF FOUR RINGBANKS AT PARWICH, DERBYSHIRE G. A. Makepeace with contribution from D. W. Shimwell	17
LITTLE CHESTER, DERBY: CHANGING ROOM SERVICE TRENCH, OCTOBER 1980 M. Brassington	26
A 1770–90 KILN DUMP OF THE DERBY CHINA WORKS Robin and Ross Barkla	28
SOME OBSERVATIONS ON THE HOLOCENE MAMMALIAN FAUNAL REMAINS EXCAVATED FROM TWO CAVES IN HARTLE DALE J. F. Hamshaw-Thomas	34
AN UNUSUAL ROMAN BROOCH FROM BEELEY Martin J. Dearne and Julien Parsons	45
TEST-PITTING FOR PREHISTORIC ARTEFACTS NEAR BRADWELLMOOR BARN, 1995 Graeme Guilbert, Daryl Garton and Steve Malone	48
OLD WOMAN'S (HOUSE) CAVE, TADDINGTON DALE P. Smith and E. G. Frost	54
THE GOYT'S MOSS COLLIERY, BUXTON John Barnatt and John Leach	56
EXCAVATION AND RESTORATION OF THE DOLL TOR STONE CIRCLE, STANTON, DERBYSHIRE, 1994 John Barnatt	81
SUDBURY HOME FARM IN THE PARISH OF DOVERIDGE, DERBYSHIRE Barbara Hutton	86
TRESPASSERS AND DEBTORS: DERBY AT THE END OF THE SIXTEENTH CENTURY Evelyn Lord	97

ILLUSTRATIONS

SURVEY AND EXCAVATIONS AT DIRTLOW, BRADWELL MOOR, 1987–88

Fig. 1	Dirtlow, Bradwell Moor: site location (a); Complexes 1–3 (b); Complex 3 (c & d)	6
Fig. 2	Dirtlow, Bradwell Moor: Complex 1 (inset); plan of Enclosure 'e'	7
Fig. 3	Dirtlow, Bradwell Moor: plans of Trenches A and B	11
Fig. 4	Dirtlow, Bradwell Moor: plans of Trenches D and F; and simplified section from A–B in Trench D	12
Fig. 5	Dirtlow, Bradwell Moor: scraper from Trench D	16

A RESURVEY OF THE RINGBANKS ON PARWICH MOOR AND THE EXCAVATION OF FOUR RINGBANKS AT PARWICH, DERBYSHIRE

Fig. 1	Ringbanks on Parwich Moor: location	18
Fig. 2	Ringbanks on Parwich Moor: plans	21
Fig. 3	Ringbanks on Parwich Moor: sections	22

LITTLE CHESTER, DERBY: CHANGING ROOM SERVICE TRENCH, OCTOBER 1980

Fig. 1	Little Chester, Changing Room Service Trench: site plan	27
Fig. 2	Little Chester, Changing Room Service Trench: samian bowl by the potter X6	27

A 1770–90 KILN DUMP OF THE DERBY CHINA WORKS

Fig. 1	Derby China Works: taken from Burdett's Map of Derbyshire 1791	29
Fig. 2	Derby China Works: reproduced from the 1967 Ordnance Survey 25 inch sheet SK5356	29
Fig. 3	Derby China Works: location of boreholes and initial trenches	30
Fig. 4	Derby China Works: plan of 1990 trenches	30

SOME OBSERVATIONS OF THE HOLOCENE MAMMALIAN FAUNAL REMAINS EXCAVATED FROM TWO CAVES IN HARTLE DALE

Fig. 1	Hartle Dale cave fauna: species abundance	37
Table 1	New Cave, number of recorded anatomical units. Layer 1	38
Table 2	Percent distribution of unfused & neonate bones	39
Table 3	Fissure Cave, number of recorded anatomical units. Layer 3	40
Table 4	Fissure Cave, number of recorded anatomical units. Layer 3	41
Fig. 2	Hartle Dale cave fauna: Fissure Cave: species abundance	42

AN UNUSUAL ROMAN BROOCH FROM BEELEY

Fig. 1	Roman Brooch from Beeley: actual size	45
--------	---------------------------------------	----

TEST-PITTING FOR PREHISTORIC ARTEFACTS NEAR BRADWELLMOOR BARN, 1995

Fig. 1	Bradwellmoor Barn: disposition of 1995 test-pits in relation to the 1990–94 trenches	50
--------	--	----

OLD WOMAN'S (HOUSE) CAVE, TADDINGTON DALE

Fig. 1	Old Woman's House Cave, Taddington Dale (SK16417119): sketch section	54
--------	--	----

THE GOYT'S MOSS COLLIERY, BUXTON

Fig. 1	The Goyt's Moss Colliery: The Goyt's Moss/Axe Edge area in the mid-19th century	58
Fig. 2	The Goyt's Moss Colliery: surface features	59
Fig. 3	The Goyt's Moss Colliery: analysis of shaft types	62
Table 1	Different zones within Goyt's Moss Colliery, their characteristics and evidence for dating	67
Fig. 4	The Goyt's Moss Colliery: development through time	68
Fig. 5	The Goyt's Moss Colliery: underground levels from Burbage to the Goyt's Moss and Axe Edge mines	73
Table 2	Colliery sales and profits 1790–1817	78

EXCAVATION AND RESTORATION OF THE DOLL TOR STONE CIRCLE, STANTON, DERBYSHIRE, 1994

Fig. 1	Doll Tor stone circle: plan showing the location of the two excavation trenches and the structural features which survived the 1993 disturbances	82
--------	--	----

SUDBURY HOME FARM IN THE PARISH OF DOVERIDGE, DERBYSHIRE

Fig. 1	Sudbury Home Farm: east elevation	88
Fig. 2	Sudbury Home Farm: north elevation	89
Fig. 3	Sudbury Home Farm: north end roof over hall from south side	90
Fig. 4	Sudbury Home Farm: ground plan	91
Fig. 5	Sudbury Home Farm: truss WI from east side	94
Fig. 6	Sudbury Home Farm: southern roof trusses A and B	94

TRESPASSERS AND DEBTORS: DERBY AT THE END OF THE SIXTEENTH CENTURY

Fig. 1	Annual number of cases in the Derby Borough Court Book 1589–98	101
Fig. 2	Scale of Debt in the Derby Borough Court Book 1589–98	103