

Table: Base

Page: 1

Properties

| | | | |
|--------------|---------------------|--------------|---------------------|
| DateCreated: | 22/12/2005 10:39:24 | LastUpdated: | 22/12/2005 10:39:24 |
| RecordCount: | 554 | Updatable: | True |

Columns

| <u>Name</u> | <u>Type</u> | <u>Size</u> |
|-------------|--------------|-------------|
| ID | Long Integer | 4 |
| Sub-group | Double | 8 |
| Field | Text | 255 |
| Value | Text | 255 |
| Pot ON | Text | 255 |
| Comments | Text | 255 |

Properties

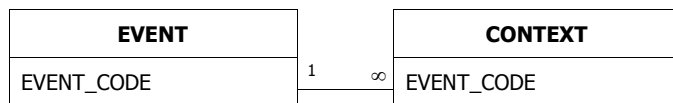
| | | | |
|----------------|----------------------|--------------|---|
| DateCreated: | 07/11/2003 17:10:19 | Description: | Archaeological deposits and features described at the context level |
| FrozenColumns: | 1 | LastUpdated: | 26/08/2004 12:05:22 |
| OrderBy: | CONTEXT.PX_Rank DESC | OrderByOn: | True |
| RecordCount: | 3031 | Updatable: | True |

Columns

| Name | Type | Size |
|----------------|--------------|------|
| EVENT_CODE | Text | 50 |
| CONTEXT | Long Integer | 4 |
| TRENCH_URL | Text | 10 |
| TYPE | Text | 25 |
| FILL OF | Long Integer | 4 |
| SUB-GROUP | Long Integer | 4 |
| INTERPRETATION | Text | 50 |
| ASSOCIATION | Text | 255 |
| PERIOD | Text | 30 |
| RES_INT | Text | 10 |
| COMMENTS | Text | 254 |
| PX_Sub-group | Long Integer | 4 |
| PX_Rank | Integer | 2 |
| PX_MinDate | Long Integer | 4 |
| PX_MaxDate | Long Integer | 4 |

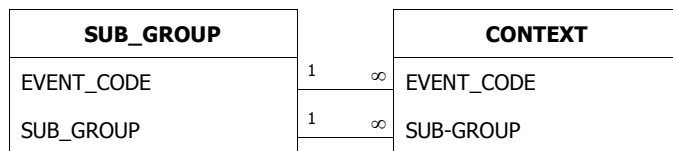
Relationships

EVENTCONTEXT



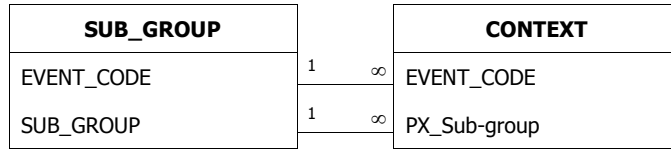
Attributes: Enforced, Cascade Updates
 RelationshipType: One-To-Many

SUB_GROUPCONTEXT



Attributes: Enforced, Cascade Updates
 RelationshipType: One-To-Many

SUB_GROUPCONTEXT



Attributes:

RelationshipType:

Enforced, Cascade Updates

One-To-Many

Table: Depth

Page: 4

Properties

| | | | |
|--------------|---------------------|--------------|---------------------|
| DateCreated: | 22/12/2005 10:39:24 | LastUpdated: | 22/12/2005 10:39:24 |
| RecordCount: | 554 | Updatable: | True |

Columns

| <u>Name</u> | <u>Type</u> | <u>Size</u> |
|-------------|--------------|-------------|
| ID | Long Integer | 4 |
| Sub-group | Double | 8 |
| Field | Text | 255 |
| Value | Double | 8 |
| Pot ON | Text | 255 |
| Comments | Text | 255 |

Properties

| | | | |
|--------------|---------------------|--------------|---------------------|
| DateCreated: | 22/12/2005 10:39:24 | LastUpdated: | 22/12/2005 10:39:24 |
| RecordCount: | 675 | Updatable: | True |

Columns

| <u>Name</u> | <u>Type</u> | <u>Size</u> |
|-------------|--------------|-------------|
| ID | Long Integer | 4 |
| Sub-group | Double | 8 |
| Field | Text | 255 |
| Value | Text | 255 |
| Pot ON | Text | 255 |
| Comments | Double | 8 |

Properties

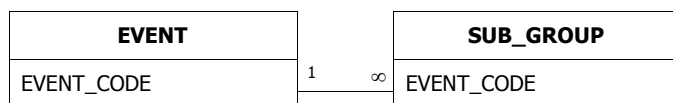
| | | | |
|--------------|---------------------|--------------|--|
| DateCreated: | 07/11/2003 17:10:20 | Description: | List of individual fieldwork projects producing contexts that exist in this database |
| LastUpdated: | 07/11/2003 17:10:24 | OrderByOn: | True |
| RecordCount: | 3 | RowHeight: | 1185 |
| Updatable: | True | | |

Columns

| Name | Type | Size |
|--------------|--------------|------|
| tmpEvent | Text | 255 |
| EVENT_NAME | Text | 40 |
| EVENT_CODE | Text | 50 |
| EVENT_TYPE | Text | 40 |
| CONTRACTOR | Text | 60 |
| DATE | Text | 40 |
| GRID (NGR) | Text | 13 |
| PROJECT | Text | 10 |
| COUNTY | Text | 30 |
| DISTRICT | Text | 30 |
| PARISH | Text | 40 |
| SMR | Text | 100 |
| SITE_TYPE | Memo | - |
| PERIOD: | Text | 200 |
| METHOD: | Memo | - |
| PHASING: | Memo | - |
| ENVIRO: | Memo | - |
| FINDS: | Memo | - |
| GEOLOGY: | Memo | - |
| CONTEXT_NUM: | Double | 8 |
| THREAT: | Memo | - |
| SAMPLE: | Double | 8 |
| SUMMARY: | Memo | - |
| ARCHIVE: | Memo | - |
| ACC_NUM: | Text | 100 |
| PxProjectNo | Long Integer | 4 |

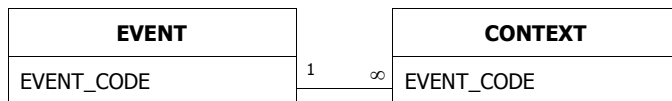
Relationships

EVENTSUB_GROUP



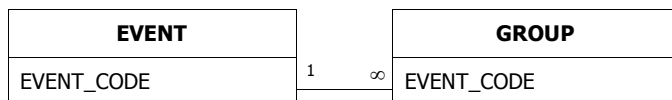
Attributes: Enforced, Cascade Updates
 RelationshipType: One-To-Many

EVENTCONTEXT



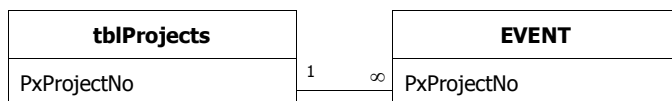
Attributes: Enforced, Cascade Updates
RelationshipType: One-To-Many

EVENTGROUP



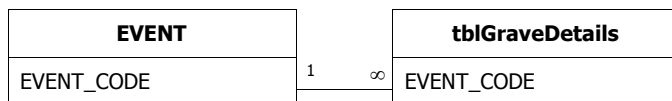
Attributes: Enforced, Cascade Updates
RelationshipType: One-To-Many

tblProjectsEVENT



Attributes: Enforced, Cascade Updates
RelationshipType: One-To-Many

EVENTtblGraveDetails



Attributes: Enforced, Cascade Updates
RelationshipType: One-To-Many

Table: Fillcolour

Page: 8

Properties

| | | | |
|--------------|---------------------|--------------|---------------------|
| DateCreated: | 22/12/2005 10:39:24 | LastUpdated: | 22/12/2005 10:39:24 |
| RecordCount: | 627 | Updatable: | True |

Columns

| <u>Name</u> | <u>Type</u> | <u>Size</u> |
|-------------|--------------|-------------|
| ID | Long Integer | 4 |
| Sub-group | Double | 8 |
| Field | Text | 255 |
| Value | Text | 255 |
| Pot ON | Text | 255 |
| Comments | Double | 8 |

Table: Fillthickness

Page: 9

Properties

| | | | |
|--------------|---------------------|--------------|---------------------|
| DateCreated: | 22/12/2005 10:39:24 | LastUpdated: | 22/12/2005 10:39:24 |
| RecordCount: | 200 | Updatable: | True |

Columns

| <u>Name</u> | <u>Type</u> | <u>Size</u> |
|-------------|--------------|-------------|
| ID | Long Integer | 4 |
| Sub-group | Double | 8 |
| Field | Text | 255 |
| Value | Double | 8 |
| Pot ON | Text | 255 |
| Comments | Double | 8 |

Properties

| | | | |
|--------------|---------------------|--------------|---------------------|
| DateCreated: | 21/07/2004 08:12:34 | LastUpdated: | 21/07/2004 08:12:34 |
| OrderByOn: | False | RecordCount: | 1478 |
| Updatable: | True | | |

Columns

| Name | Type | Size |
|---------------|--------------|------|
| Key | Text | 255 |
| EventCode | Text | 50 |
| SourceNo | Long Integer | 4 |
| Interpreta | Text | 255 |
| Period | Text | 255 |
| PX_MinDate | Long Integer | 4 |
| PX_MaxDate | Long Integer | 4 |
| SourceComment | Memo | - |
| Ilevel | Text | 255 |

Properties

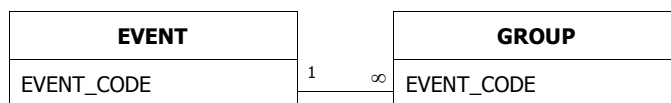
| | | | |
|--------------|---------------------|--------------|--|
| DateCreated: | 07/11/2003 17:10:20 | Description: | Archaeological deposits and features described at the group level consisting of one or more sub-groups |
| LastUpdated: | 25/08/2004 12:37:17 | OrderByOn: | True |
| RecordCount: | 31 | RowHeight: | Default |
| Updatable: | True | | |

Columns

| Name | Type | Size |
|-------------------|--------------|------|
| EVENT_CODE | Text | 50 |
| GROUP | Long Integer | 4 |
| SUB_GROUPS | Memo | - |
| PERIOD | Text | 50 |
| INTERPRETATION | Text | 100 |
| COMMENTS | Memo | - |
| PX_Interpretation | Text | 100 |
| PX_Comment | Memo | - |
| PX_MinDate | Long Integer | 4 |
| PX_MaxDate | Long Integer | 4 |
| OldGroup | Long Integer | 4 |

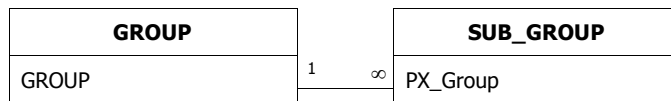
Relationships

EVENTGROUP



Attributes: Enforced, Cascade Updates
 RelationshipType: One-To-Many

GROUPSUB_GROUP



Attributes: Enforced, Cascade Updates
 RelationshipType: One-To-Many

Properties

| | | | |
|--------------|---------------------|--------------|---------------------|
| DateCreated: | 22/12/2005 10:39:24 | LastUpdated: | 22/12/2005 10:39:25 |
| RecordCount: | 554 | Updatable: | True |

Columns

| <u>Name</u> | <u>Type</u> | <u>Size</u> |
|-------------|--------------|-------------|
| ID | Long Integer | 4 |
| Sub-group | Double | 8 |
| Field | Text | 255 |
| Value | Double | 8 |
| Pot ON | Text | 255 |
| Comments | Text | 255 |

Properties

| | | | |
|--------------|---------------------|--------------|---------------------|
| DateCreated: | 22/12/2005 10:39:25 | LastUpdated: | 22/12/2005 10:39:25 |
| RecordCount: | 545 | Updatable: | True |

Columns

| Name | Type | Size |
|-----------|--------------|------|
| ID | Long Integer | 4 |
| Sub-group | Double | 8 |
| Field | Text | 255 |
| Value | Double | 8 |
| Pot ON | Text | 255 |
| Comments | Text | 255 |

Properties

| | | | |
|----------------------|---------------------|-------------------------|---------------------|
| DatasheetFontHeight: | 10 | DatasheetFontItalic: | False |
| DatasheetFontName: | Arial | DatasheetFontUnderline: | False |
| DatasheetFontWeight: | Normal | DatasheetForeColor: | 0 |
| DateCreated: | 22/12/2005 10:39:25 | LastUpdated: | 22/12/2005 10:39:25 |
| OrderByOn: | True | RecordCount: | 590 |
| TabularCharSet: | 0 | TabularFamily: | 34 |
| Updatable: | True | | |

Columns

| <u>Name</u> | <u>Type</u> | <u>Size</u> |
|-----------------------------|--------------|-------------|
| EVENT_CODE | Text | 10 |
| SUB_GROUP | Double | 8 |
| GRAVE ORIENTATION (degrees) | Long Integer | 4 |
| GRAVE ORIENTATION (N-S) | Text | 50 |
| HEAD ORIENTATION (N-S) | Text | 50 |

Properties

| | | | |
|--------------|---------------------|--------------|---|
| DateCreated: | 21/07/2004 08:12:35 | Description: | Temporary table for processing memo field comments for attaching to qryOutputPX |
| LastUpdated: | 21/07/2004 08:12:35 | OrderByOn: | False |
| RecordCount: | 3645 | Updatable: | True |

Columns

| Name | Type | Size |
|---------------|--------------|------|
| EVENT_CODE | Text | 50 |
| SourceNumber | Long Integer | 4 |
| Ilevel | Text | 50 |
| SourceComment | Memo | - |
| PX_MinDate | Long Integer | 4 |
| PX_MaxDate | Long Integer | 4 |

Properties

DateCreated: 22/12/2005 10:39:25 LastUpdated: 22/12/2005 10:39:25
RecordCount: 550 Updatable: True

Columns

| Name | Type | Size |
|-----------|--------------|------|
| ID | Long Integer | 4 |
| Sub-group | Double | 8 |
| Field | Text | 255 |
| Value | Text | 255 |
| Pot ON | Text | 255 |
| Comments | Text | 255 |

Properties

| | | | |
|--------------|---------------------|--------------|---------------------|
| DateCreated: | 22/12/2005 10:39:25 | LastUpdated: | 22/12/2005 10:39:25 |
| RecordCount: | 554 | Updatable: | True |

Columns

| Name | Type | Size |
|-----------|--------------|------|
| ID | Long Integer | 4 |
| Sub-group | Double | 8 |
| Field | Text | 255 |
| Value | Text | 255 |
| Pot ON | Text | 255 |
| Comments | Text | 255 |

Properties

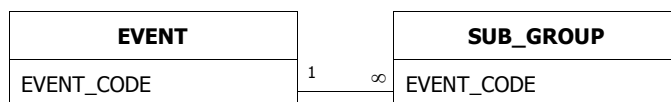
| | | | |
|--------------|---------------------|--------------|--|
| DateCreated: | 07/11/2003 17:10:21 | Description: | Archaeological deposits and features described at the sub-group level consisting of one or more sub-groups |
| LastUpdated: | 11/08/2004 14:58:22 | OrderBy: | SUB_GROUP.EVENT_CODE |
| OrderByOn: | True | RecordCount: | 629 |
| Updatable: | True | | |

Columns

| Name | Type | Size |
|-------------------|--------------|------|
| EVENT_CODE | Text | 50 |
| SUB_GROUP | Long Integer | 4 |
| CONTEXTS | Memo | - |
| PERIOD | Text | 50 |
| INTERPRETATION | Text | 50 |
| COMMENTS | Memo | - |
| PART OF GROUP | Long Integer | 4 |
| PHASE | Long Integer | 4 |
| PX_Group | Long Integer | 4 |
| PX_Interpretation | Text | 50 |
| PX_Comment | Memo | - |
| PX_MinDate | Long Integer | 4 |
| PX_MaxDate | Long Integer | 4 |

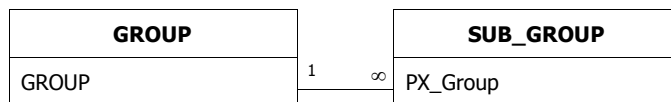
Relationships

EVENTSUB_GROUP



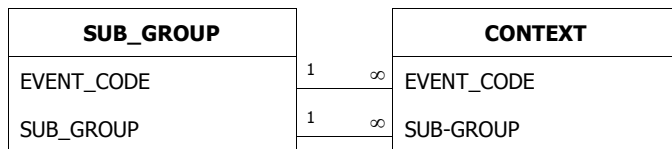
Attributes: Enforced, Cascade Updates
 RelationshipType: One-To-Many

GROUPSUB_GROUP



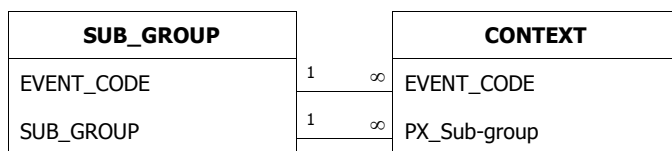
Attributes: Enforced, Cascade Updates
 RelationshipType: One-To-Many

SUB_GROUPCONTEXT



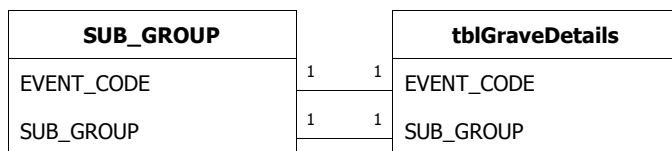
Attributes: Enforced, Cascade Updates
 RelationshipType: One-To-Many

SUB_GROUPCONTEXT



Attributes: Enforced, Cascade Updates
 RelationshipType: One-To-Many

SUB_GROUPtblGraveDetails



Attributes: Unique, Enforced, Cascade Updates
 RelationshipType: One-To-One

Properties

| | | | |
|--------------|---------------------|--------------|--|
| DateCreated: | 21/07/2004 08:12:35 | Description: | Output: Context dates after specialist assessment of finds: derived from opinion or the earliest date of the latest object |
| LastUpdated: | 21/07/2004 08:12:35 | OrderByOn: | False |
| RecordCount: | 1147 | Updatable: | True |

Columns

| Name | Type | Size |
|----------------|--------------|------|
| EVENT_CODE | Text | 50 |
| CONTEXT | Long Integer | 4 |
| Specialism | Text | 50 |
| ContextDateMin | Long Integer | 4 |
| ContextDateMax | Long Integer | 4 |
| ContextComment | Memo | - |
| LastEdit | Date/Time | 8 |
| DateMeaning | Text | 50 |

Properties

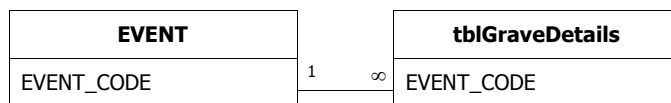
| | | | |
|--------------|---------------------|--------------|--|
| DateCreated: | 07/11/2003 17:10:22 | Description: | Details of graves and grave types. Applicable only to cemetary sites |
| LastUpdated: | 07/11/2003 17:10:25 | OrderByOn: | False |
| RecordCount: | 376 | Updatable: | True |

Columns

| Name | Type | Size |
|-------------------|--------------|------|
| EVENT_CODE | Text | 10 |
| SUB_GROUP | Long Integer | 4 |
| GRAVE_DEGREES | Long Integer | 4 |
| GRAVE_ORIENTATION | Text | 50 |
| HEAD_ORIENTATION | Text | 50 |
| POT_COUNT | Long Integer | 4 |
| NAIL_COUNT | Long Integer | 4 |

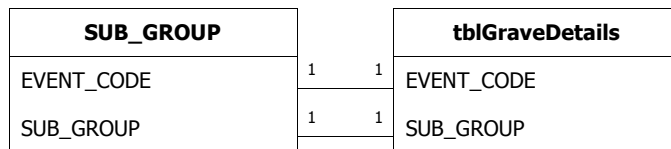
Relationships

EVENTtblGraveDetails



Attributes: Enforced, Cascade Updates
 RelationshipType: One-To-Many

SUB_GROUPtblGraveDetails



Attributes: Unique, Enforced, Cascade Updates
 RelationshipType: One-To-One

Properties

| | | | |
|--------------|---------------------|--------------|--|
| DateCreated: | 21/07/2004 08:12:35 | Description: | Output: Typological object dates after specialist analysis |
| LastUpdated: | 21/07/2004 08:12:35 | OrderByOn: | True |
| RecordCount: | 6256 | Updatable: | True |

Columns

| Name | Type | Size |
|-------------------|--------------|------|
| ObjectKey | Text | 10 |
| EVENT_CODE | Text | 50 |
| CONTEXT | Long Integer | 4 |
| SFNumber | Long Integer | 4 |
| Specialism | Text | 50 |
| ObjectMaterial | Text | 254 |
| ObjectName | Text | 254 |
| ObjectDateMin | Long Integer | 4 |
| ObjectDateMax | Long Integer | 4 |
| ObjectDescription | Memo | - |
| ObjectCount | Long Integer | 4 |
| ObjectWeight | Long Integer | 4 |
| AnalysisLevel | Text | 20 |
| LastEdit | Date/Time | 8 |

Properties

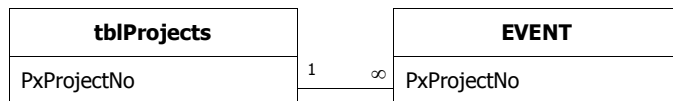
| | | | |
|--------------|---------------------|--------------|--|
| DateCreated: | 07/11/2003 17:10:22 | Description: | List of all event codes belonging to a CTRL PX Project. Beware ARC 330 98 which crosses more one one project. This should be null valued and is handled using the context values in nProjectChainage |
| LastUpdated: | 07/11/2003 17:10:24 | OrderByOn: | False |
| RecordCount: | 1 | Updatable: | True |

Columns

| Name | Type | Size |
|---------------|--------------|------|
| PxProjectNo | Long Integer | 4 |
| PxProjectName | Text | 150 |

Relationships

tblProjectsEVENT



Attributes: Enforced, Cascade Updates
 RelationshipType: One-To-Many

Properties

| | | | |
|--------------|---------------------|--------------|--|
| DateCreated: | 07/11/2003 17:10:23 | Description: | List of recommended values for describing the interpretation of contexts |
| LastUpdated: | 07/11/2003 17:10:23 | OrderByOn: | False |
| RecordCount: | 38 | Updatable: | True |

Columns

| <u>Name</u> | <u>Type</u> | <u>Size</u> |
|-------------|-------------|-------------|
| Keyword | Text | 50 |

Properties

| | | | |
|--------------|---------------------|--------------|--|
| DateCreated: | 07/11/2003 17:10:23 | Description: | List of permitted values for describing the type of deposit to which a context umber has been assigned |
| LastUpdated: | 07/11/2003 17:10:24 | OrderByOn: | False |
| RecordCount: | 12 | Updatable: | True |

Columns

| <u>Name</u> | <u>Type</u> | <u>Size</u> |
|-------------|-------------|-------------|
| Keyword | Text | 50 |

Properties

| | | | |
|--------------|---------------------|--------------|---|
| DateCreated: | 07/11/2003 17:10:24 | Description: | List of recommended keywords for describing the interpretation of groups of archaeological deposits or features |
| LastUpdated: | 07/11/2003 17:10:24 | OrderByOn: | False |
| RecordCount: | 67 | Updatable: | True |

Columns

| <u>Name</u> | <u>Type</u> | <u>Size</u> |
|---------------------|-------------|-------------|
| GroupInterpretation | Text | 50 |

Properties

| | | | |
|--------------|---------------------|--------------|---|
| DateCreated: | 07/11/2003 17:10:24 | Description: | List of recommended terms for describing the interpretation of sub-groups of archaeological deposits and features |
| LastUpdated: | 07/11/2003 17:10:24 | OrderByOn: | False |
| RecordCount: | 46 | RowHeight: | 540 |
| Updatable: | True | | |

Columns

| Name | Type | Size |
|-----------|------|------|
| Keyword | Text | 50 |
| ScopeNote | Text | 254 |

Properties

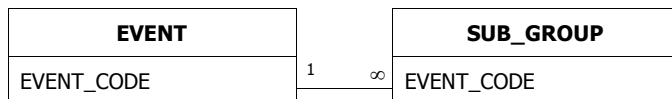
| | | | |
|--------------|---------------------|--------------|---------------------|
| DateCreated: | 22/12/2005 10:39:25 | LastUpdated: | 22/12/2005 10:39:26 |
| RecordCount: | 552 | Updatable: | True |

Columns

| <u>Name</u> | <u>Type</u> | <u>Size</u> |
|-------------|--------------|-------------|
| ID | Long Integer | 4 |
| Sub-group | Double | 8 |
| Field | Text | 255 |
| Value | Double | 8 |
| Pot ON | Text | 255 |
| Comments | Text | 255 |

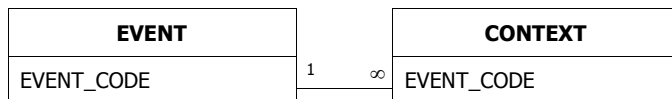
Relationships

EVENTSUB_GROUP



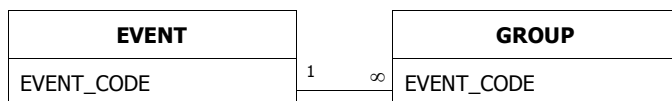
Attributes: Enforced, Cascade Updates
RelationshipType: One-To-Many

EVENTCONTEXT



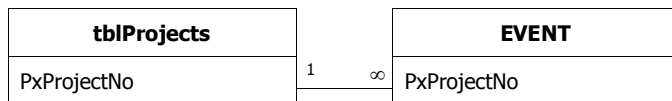
Attributes: Enforced, Cascade Updates
RelationshipType: One-To-Many

EVENTGROUP



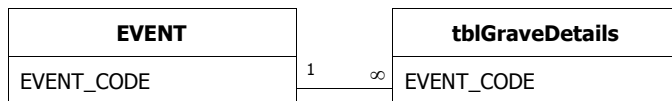
Attributes: Enforced, Cascade Updates
RelationshipType: One-To-Many

tblProjectsEVENT



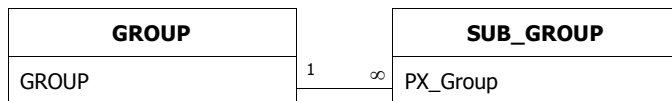
Attributes: Enforced, Cascade Updates
RelationshipType: One-To-Many

EVENTtblGraveDetails



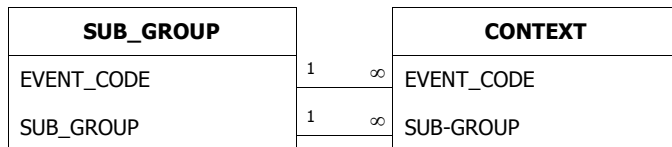
Attributes: Enforced, Cascade Updates
RelationshipType: One-To-Many

GROUPSUB_GROUP



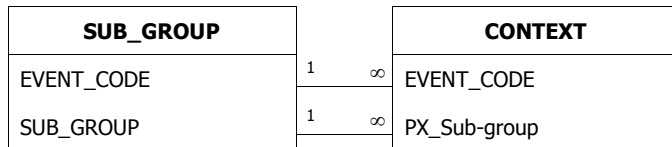
Attributes: Enforced, Cascade Updates
 RelationshipType: One-To-Many

SUB_GROUPCONTEXT



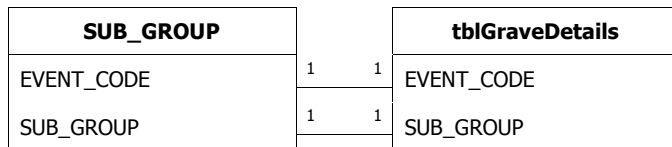
Attributes: Enforced, Cascade Updates
 RelationshipType: One-To-Many

SUB_GROUPCONTEXT



Attributes: Enforced, Cascade Updates
 RelationshipType: One-To-Many

SUB_GROUPtblGraveDetails



Attributes: Unique, Enforced, Cascade Updates
 RelationshipType: One-To-One