



HIRST
Conservation



**PETERBOROUGH
CATHEDRAL
NAVE CEILING
PHOTOGRAPHS**



LAUGHTON HALL FARMHOUSE, LAUGHTON, SLEAFORD, LINCS., NG34 0HE. TEL: (01529) 497449 FAX: (01529) 497518

**PETERBOROUGH
CATHEDRAL
NAVE CEILING
PHOTOGRAPHS**

APPENDIX A: PHOTOGRAPHS

Film	Kodak Gold II 200 ASA colour print film. Ilford HP5 200 ASA Black and white print film. Kodak Ektachrome 200 ASA colour slide film.
Camera	Nikon F601 body, AF Nikkor 28-85 lens, fixed 50mm Nikkor lens, SB 24 flash unit.

CEILING

Frontispiece	View of Eastern part of ceiling. Postcard/photograph by R.J.L. Smith.
Plate I	a View of the nave ceiling from the scaffolding. b View of the nave ceiling from the scaffolding.
Plate II	a Detail of ceiling boards and fixings in raking light. b Detail of ceiling boards and fixings in raking light.
Plate III	Typical area showing differing boards, screws and nails (overlay).
Plate IV	Typical area showing bolts, nails etc.(overlay).
Plate V	Detail of early nails (one fell out in 1995, hole to centre).
Plate VI	Detail of pencil inscription from 1885 (during tower works).
Plate VII	a Details of cleaning tests (overlay). b Detail of cleaning test.

ROOFSPACE

Plate VIII	a Detail of nogging, bay 2 - north side. b Detail of nogging and built up joist, bay 2 - north side. The nogging appears to run through the built up joist.
Plate IX	a Detail of layout of noggings, bay 2 - north side. b Detail of typical nogging.
Plate X	a Detail of binder/truss joint, 2nd truss, north side. b Built up joist and packer detail, bay 2 - north side.
Plate XI	View of bay 1, including detail of steel strapwork.
Plate XII	a Detail of built up joist. b Detail of built up joist.
Plate XIII	Detail of open ceiling joint at ceiling/ceiling intersection. Note how the original joint has been cut and released.

CEILING

Frontispiece View of Eastern part of ceiling. Postcard/photograph by R.J.L. Smith.



Plate I

- a View of the nave ceiling from the scaffolding.
- b View of the nave ceiling from the scaffolding.

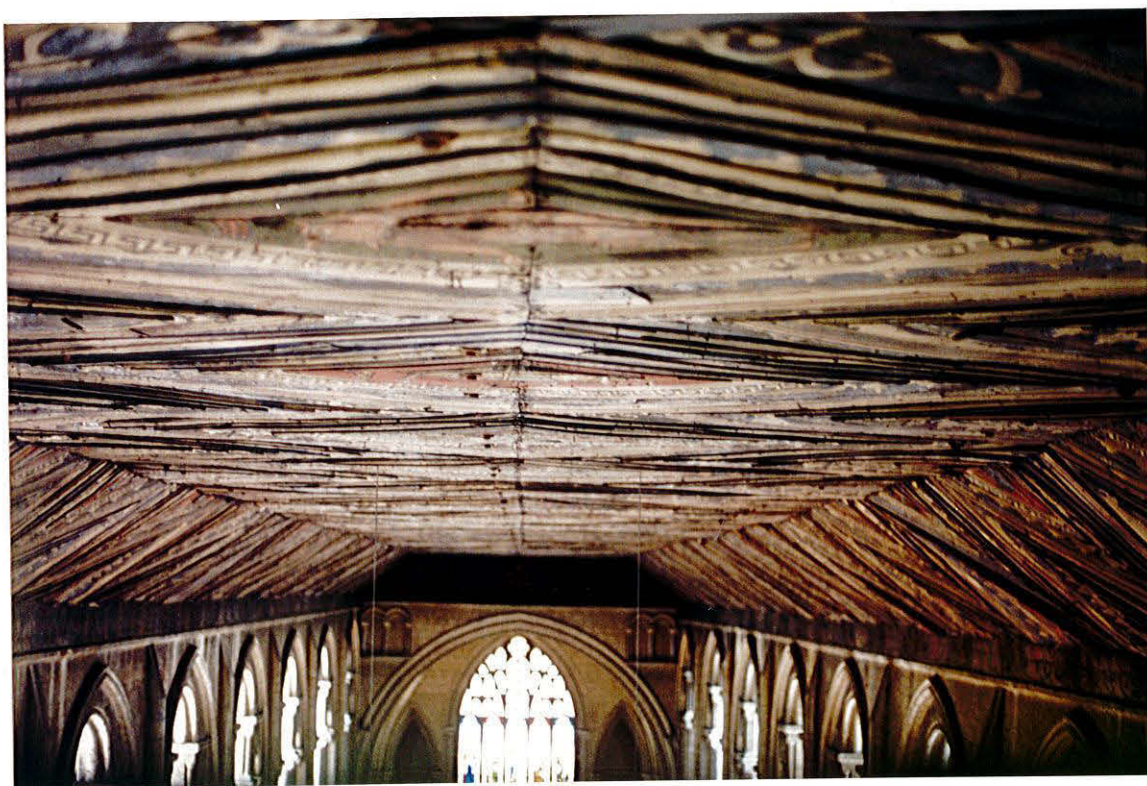
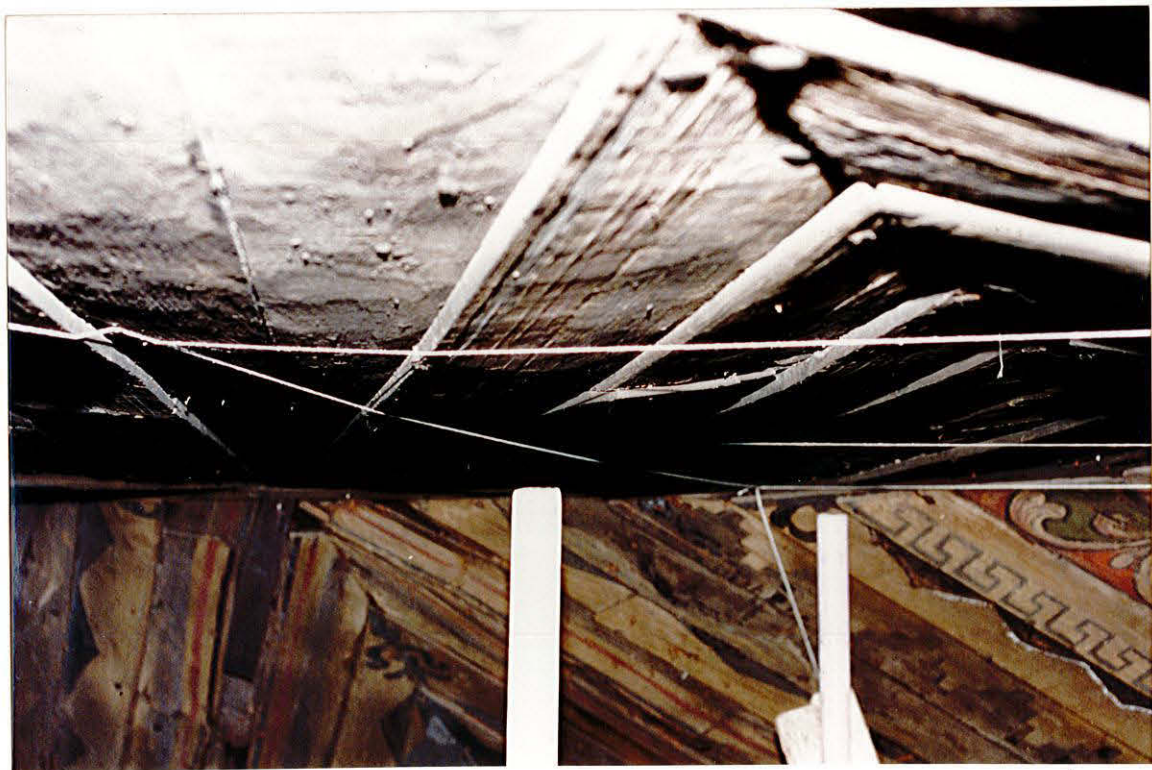


Plate II

- a Detail of ceiling boards and fixings in raking light.
- b Detail of ceiling boards and fixings in raking light.



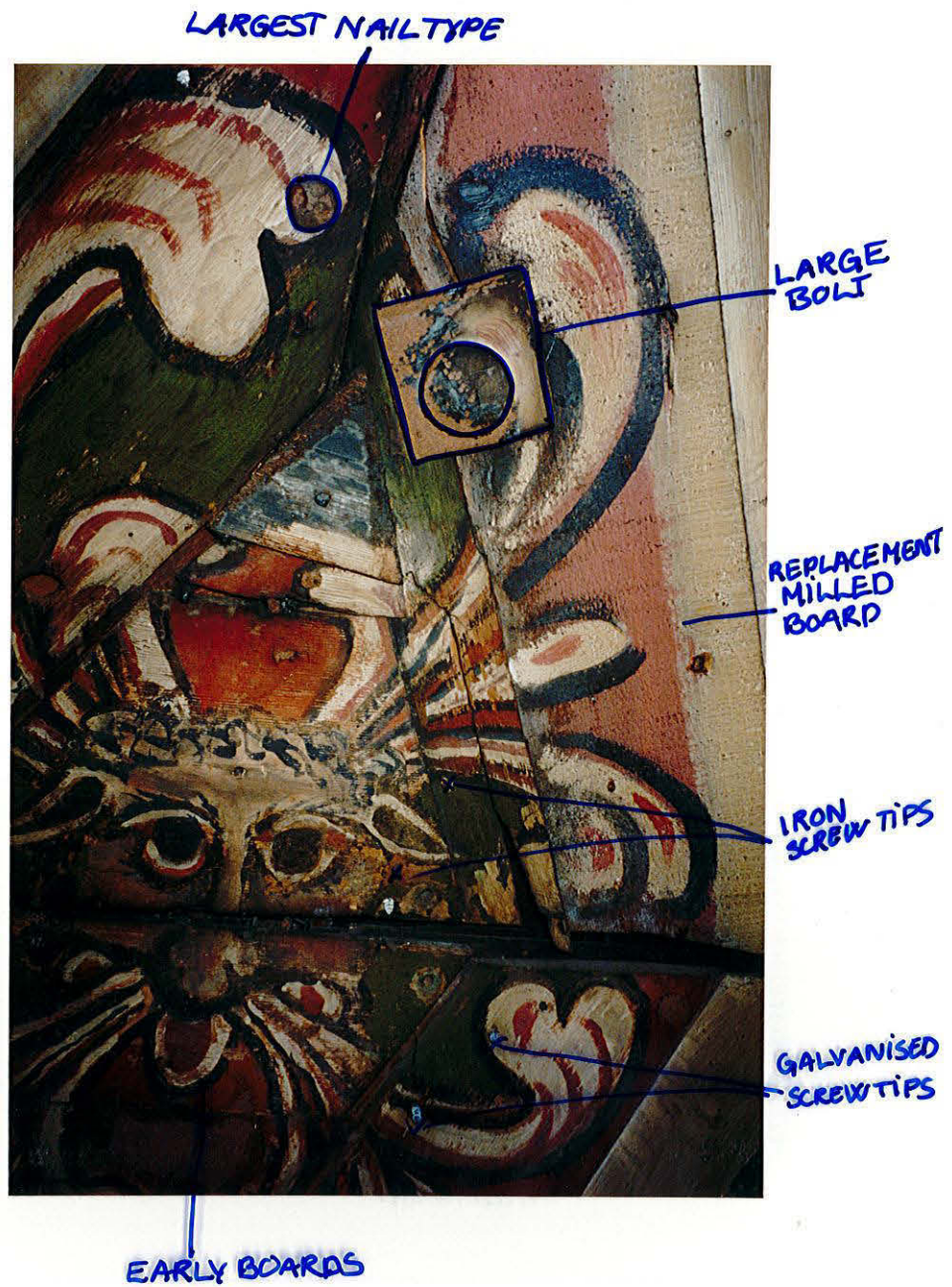


Plate IV Typical area showing bolts, nails, etc. (overlay).

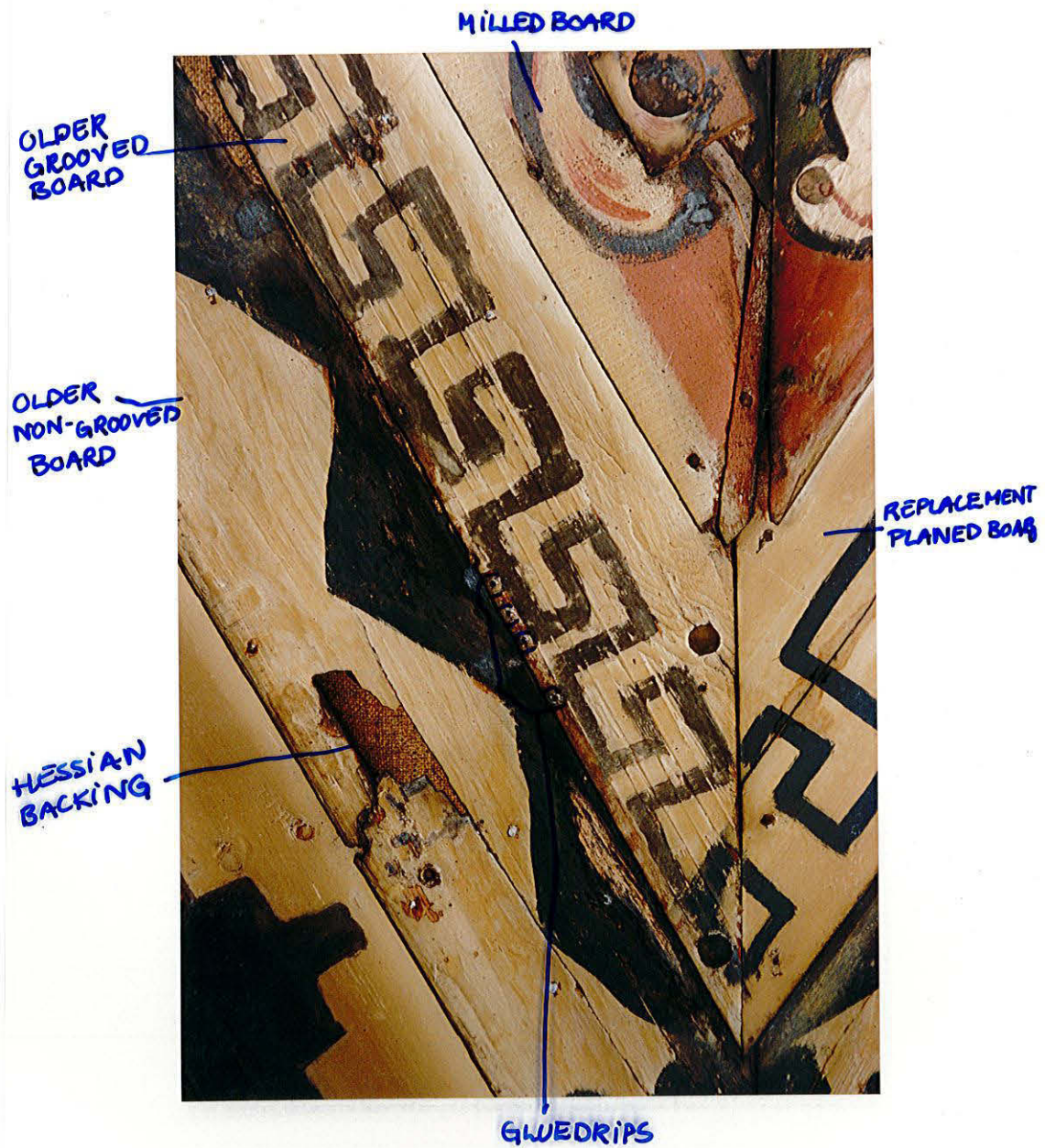


Plate V

Detail of early nails (one fell out in 1995, hole to centre).

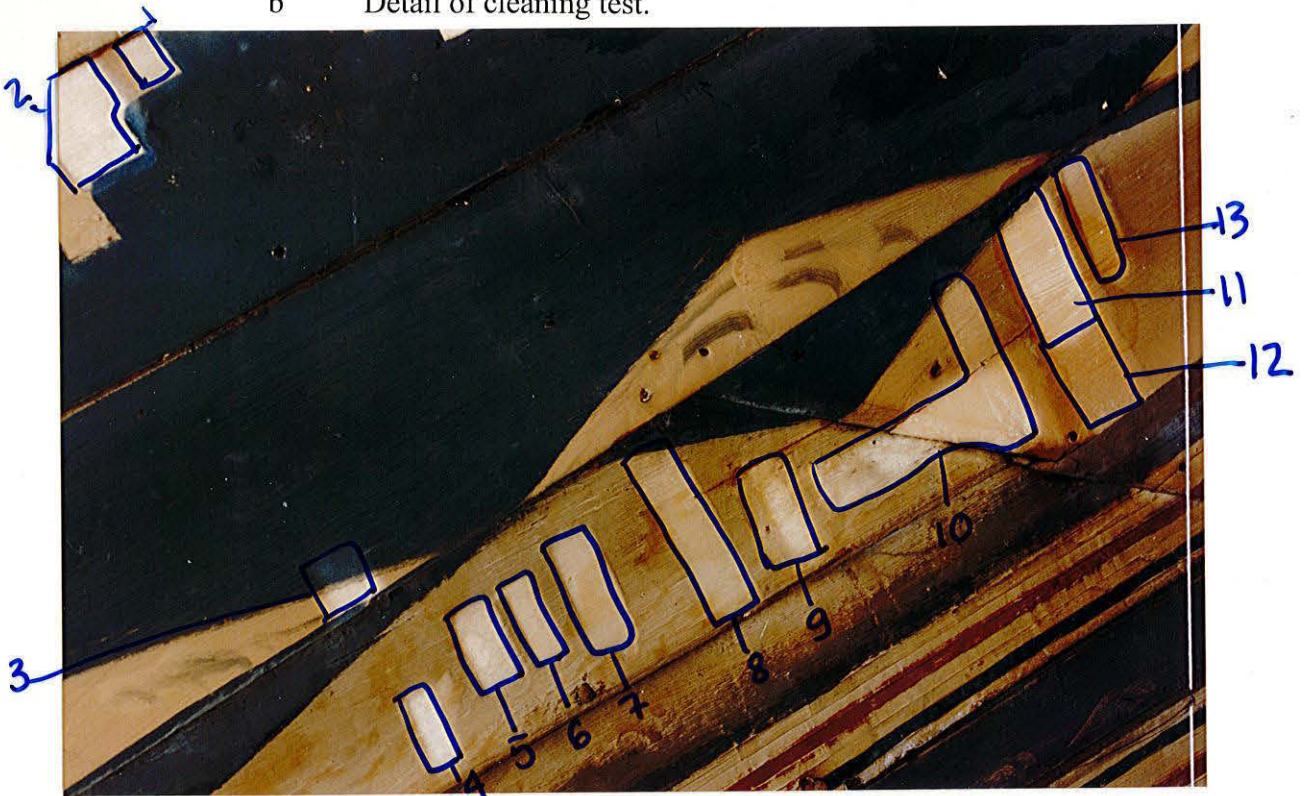


Plate VI Detail of pencil inscription from 1885 (during tower works).



Plate VII

- a Details of cleaning tests.
- b Detail of cleaning test.



1. SYNPERONIC N IN H₂O
2. TRI-AMMONIUM CITRATE SOLUTION
3. — " —
4. — " —
5. AMMONIUM HYDROXIDE IN H₂O
6. — " —
7. SYNPERONIC N IN H₂O
8. WHITE SPIRIT
9. SOLVENT MIXTURE (see B.3.3)
10. I.M.S
11. SOLVENT MIXTURE
12. WHITE SPIRIT
13. ISOPROPANOL

ROOFSPACE

- Plate VIII a Detail of nogging, bay 2 - north side.
 b Detail of nogging and built up joist, bay 2 - north side. The
 nogging appears to run through the built up joist.

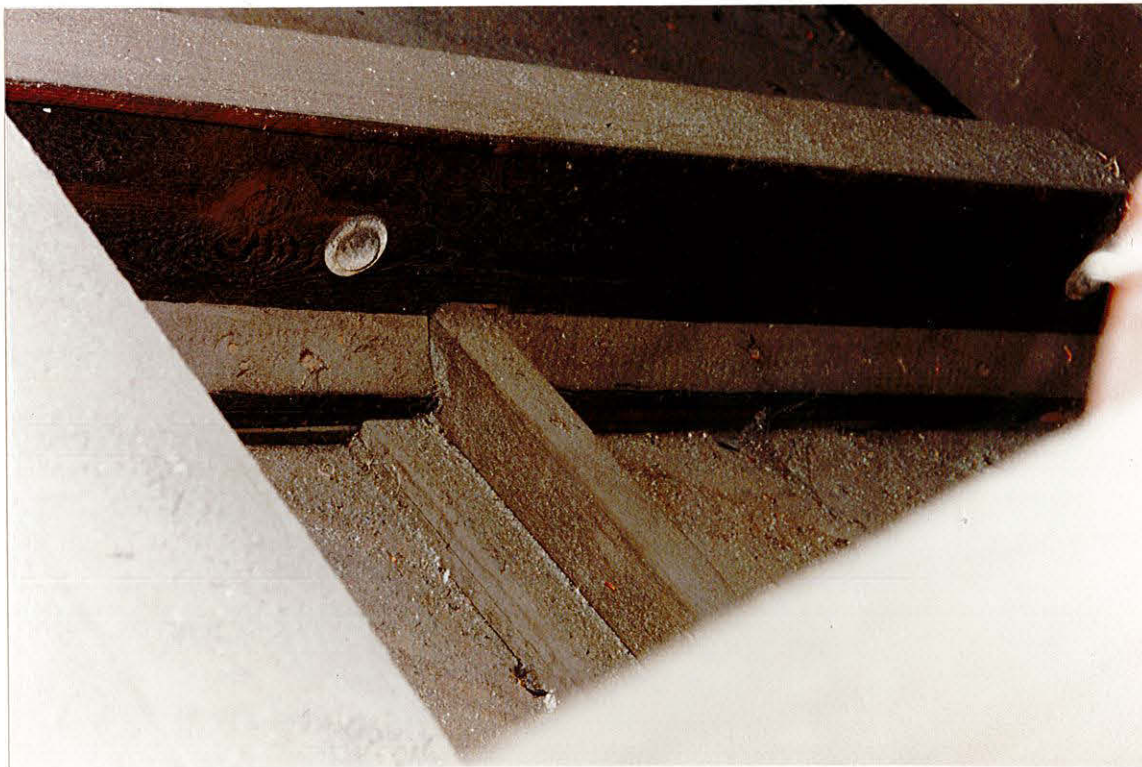


Plate IX

- a Detail of layout of noggings, bay 2 - north side.
- b Detail of typical nogging.

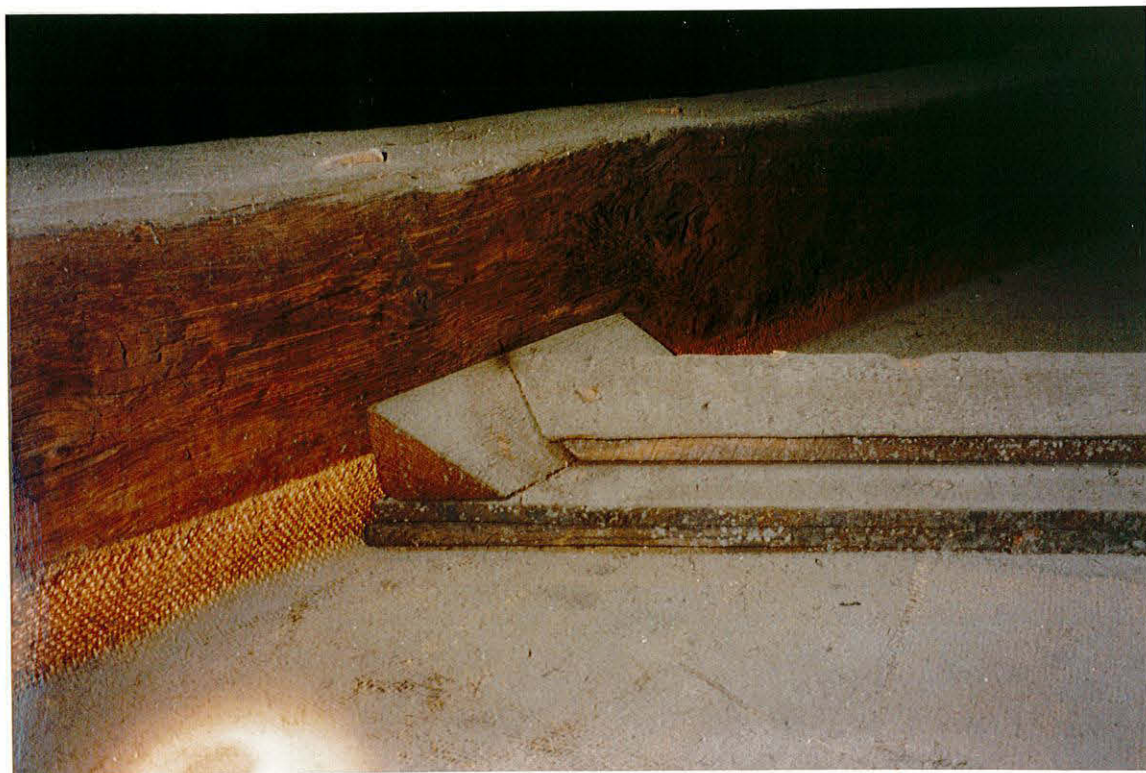


Plate X

- a Detail of binder/truss joint, 2nd truss, north side.
- b Built up joist and packer detail, bay 2 - north side.



Plate XI View of bay 1, including detail of steel strapwork.



Plate XII

- a Detail of built up joist.
- b Detail of built up joist.



Plate XIII Detail of open ceiling joint at ceiling/ceiling intersection. note how the original joint has been cut and released.

