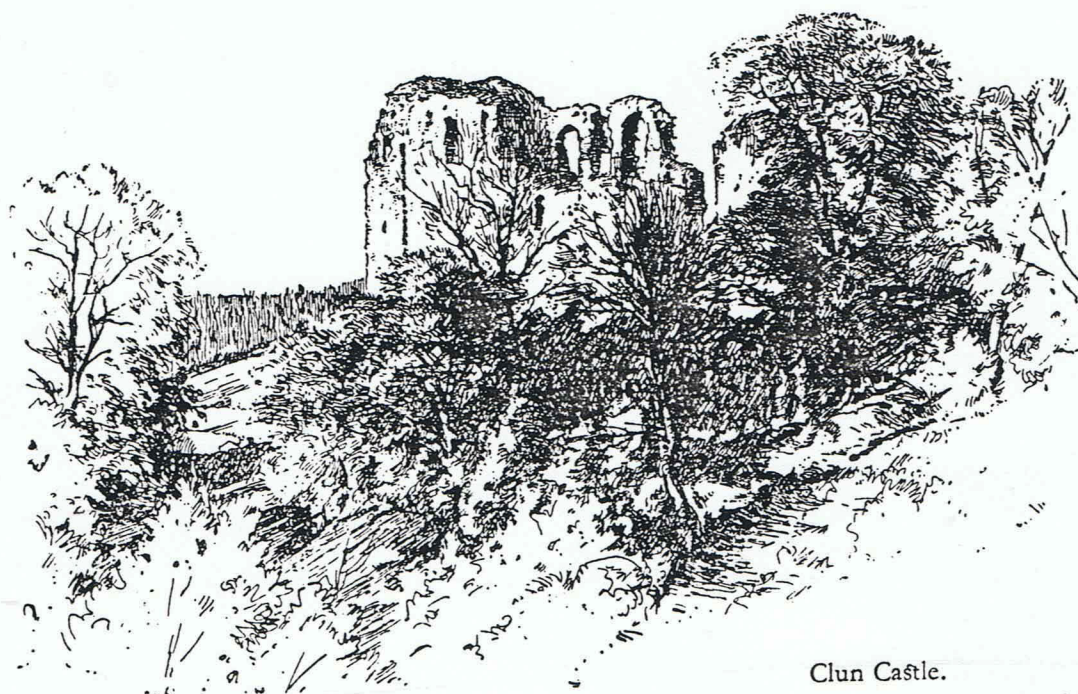


# City of Hereford Archaeology Unit

## CLUN CASTLE SHROPSHIRE



Clun Castle.

### Watching Brief on Minor Excavations for Display Panels

October 1993

Hereford Archaeology Series 189



**Clun Castle  
Shropshire  
NGR SO 299809**

**Watching Brief on Minor Excavations  
for Display Panels**

**Text & Illustrations  
Robert Williams *AIFA***

**October 1993  
City of Hereford Archaeology Unit  
(Director: Ron Shoemith *FSA MIFA*)**



This report is produced by the

## City of Hereford Archaeology Unit

TOWN HALL HEREFORD HR1 2PJ  
Tel. (0432) 268121 ext. 310  
Fax (0432) 275282

for: English Heritage  
Historic Properties  
Midlands and East Anglia Region  
Hazelrigg House  
33 Mare Fair  
Northampton  
NN1 1SR

*The City of Hereford Archaeology Committee (Director: Ron Shoesmith) was founded in 1974 and is a registered charity. It operates through the City of Hereford Archaeology Unit, which has a permanent staff of eight people. Besides dealing with the buried archaeology of Hereford - an important Saxon city dating back to the seventh century - the Unit has specialised in recent years in the archaeological recording and analysis of standing buildings. This work has usually been on a commission basis on behalf of English Heritage or developers and the Unit now has considerable experience in this field.*

Cover: Clun Castle from 'Castles' by CWC Oman



**Watching Brief on Minor Excavations  
for Display Panels  
Clun Castle  
Shropshire  
NGR SO 299809**

## **1. Introduction**

The City of Hereford Archaeology Unit was commissioned by English Heritage to organise a watching brief at Clun Castle together with all necessary recording, on trenches dug for display panels and also areas of ploughed land associated with the castle grounds. The work was carried out on the 11th and 12th May 1993 in advance of the official opening of the castle by the Duke of Norfolk on the 13th May.

## **2. Previous work**

The Unit has had substantial involvement at Clun Castle during repair and renovation works. Reports produced include:

- |         |   |
|---------|---|
| HAS 69  | Clun Castle, Shropshire<br>An Outline History<br>January 1990                   |
| HAS 89  | Clun Castle, Shropshire<br>Recording and Excavation Works<br>November 1990      |
| HAS 165 | Clun Castle, Shropshire<br>Watching Brief on Minor Excavations<br>November 1992 |
| HAS 176 | Clun Castle, Shropshire<br>Interim Report on Recording Works<br>June 1993       |

In addition the Unit has been involved in the initial proposals and the preparation of display materials at the castle.

## **3. The Watching Brief**

- 3.1 When the repair work to the upstanding masonry was completed, the access to the castle was improved by the construction of a foot-bridge across the river Clun and to the south of the castle adjacent to the car park.

### **Trench 1**

This trench was situated on the south bank of the river Clun adjacent to the car park. It was 0.5m x 1.1m and was excavated to a depth of 0.5m from the present ground level. For most of its depth it cut through modern gravel levels associated with the existing path. From 2.5m downwards a fine, clean silty clay was encountered.



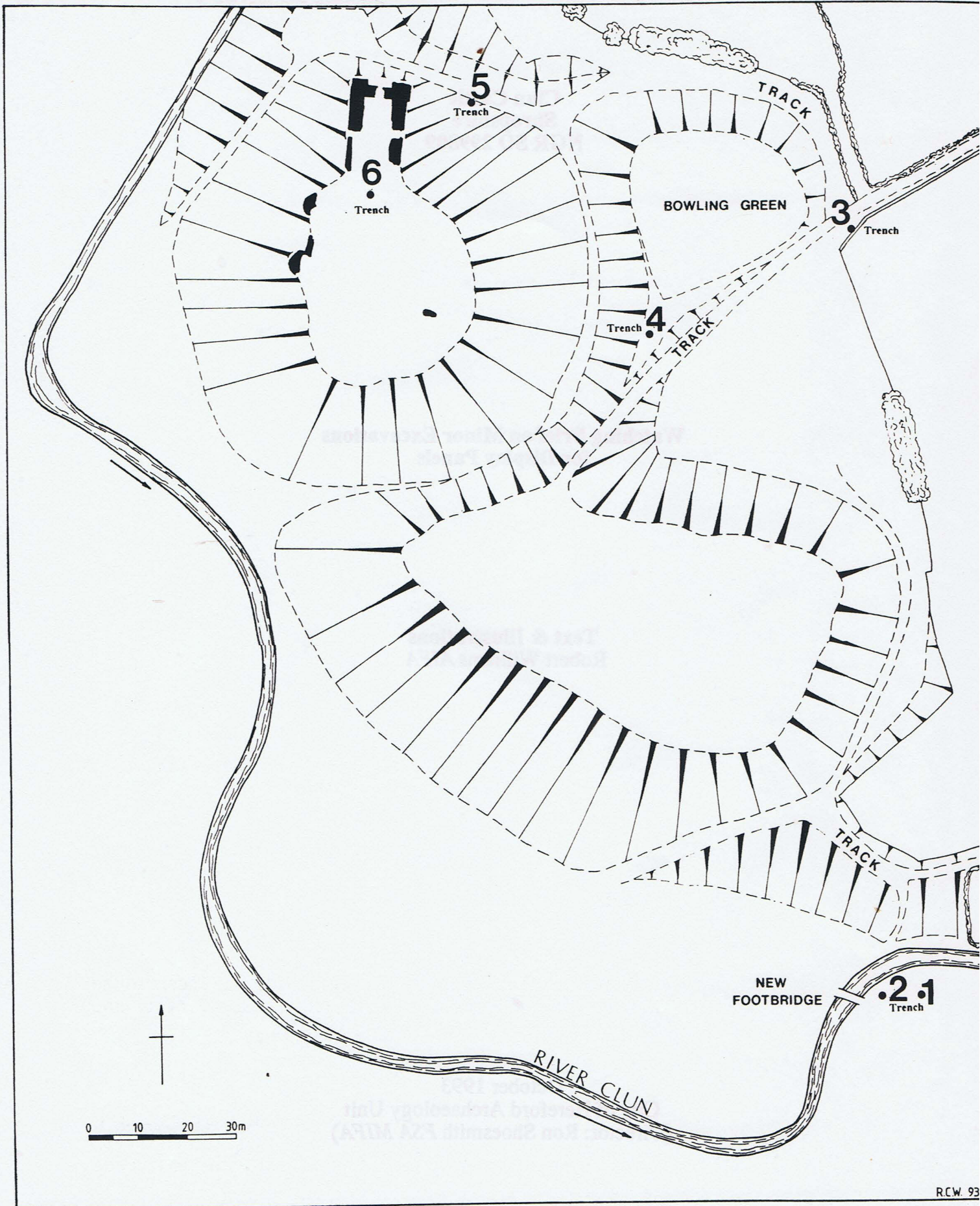


Fig.1 Plan showing the positions of the display trenches



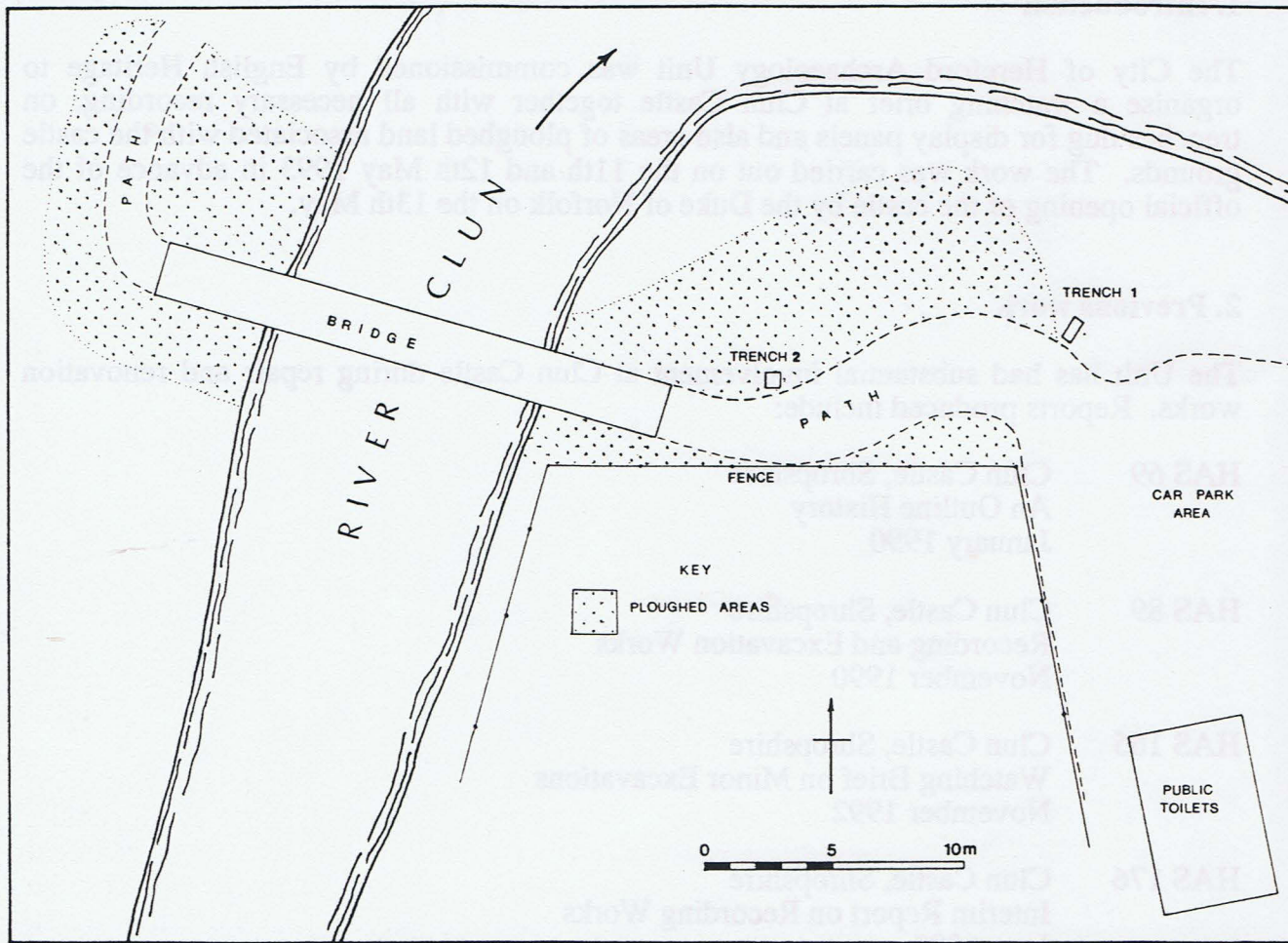


Fig. 2 Plan showing the areas of the ploughed land



## Trench 2

Situated to the west of trench 1 on the south bank of the river, this trench was 0.6m x 0.5m. From the present ground surface, the trench was excavated to a depth of 0.5m. It cut through similar features to trench 1 and the again the clean, silty clay was found at the bottom.

## Trench 3

Trench 3 was situated at the eastern side of the bowling green near the old entrance gate. This was 1.0m x 0.7m and 0.7m deep. The trench cut through a layer of very loose rubble stone which contained several sherds of Victorian pottery. At the south end a stone wall, aligning approximately east-west, was encountered. It had a good face of mortared stones. This was on a different axis to the existing wall.

## Trench 4

This trench was situated at the south-west corner of the bowling green. It was 0.6m x 1.0m in size and was excavated to a depth of 0.5m. It cut through a dark brown stony soil and four loose cobble-type stones were found in the trench.

## Trench 5

This was excavated to the north-east of the Great Tower and was 0.5m x 0.5m and was excavated to a depth of 0.5m. It cut through a layer of large, loose rubble stones which were probably associated with the collapse of the Great Tower or part of the curtain wall. Occasional lumps of mortar were also encountered.

## Trench 6

Trench 6 was situated on the motte to the south of the great tower. The trench was 0.7m x 0.7m and 0.5m deep. Throughout most of its depth it cut through loose stone rubble. At 0.4m depth, a white mortar layer was found which contained occasional charcoal flecks. This layer was similar to one found during a watching brief carried out by the Unit in 1992 (HAS 165, December 1992). Beneath this mortar layer, at a depth of 0.5m, a layer of flat stones was encountered.

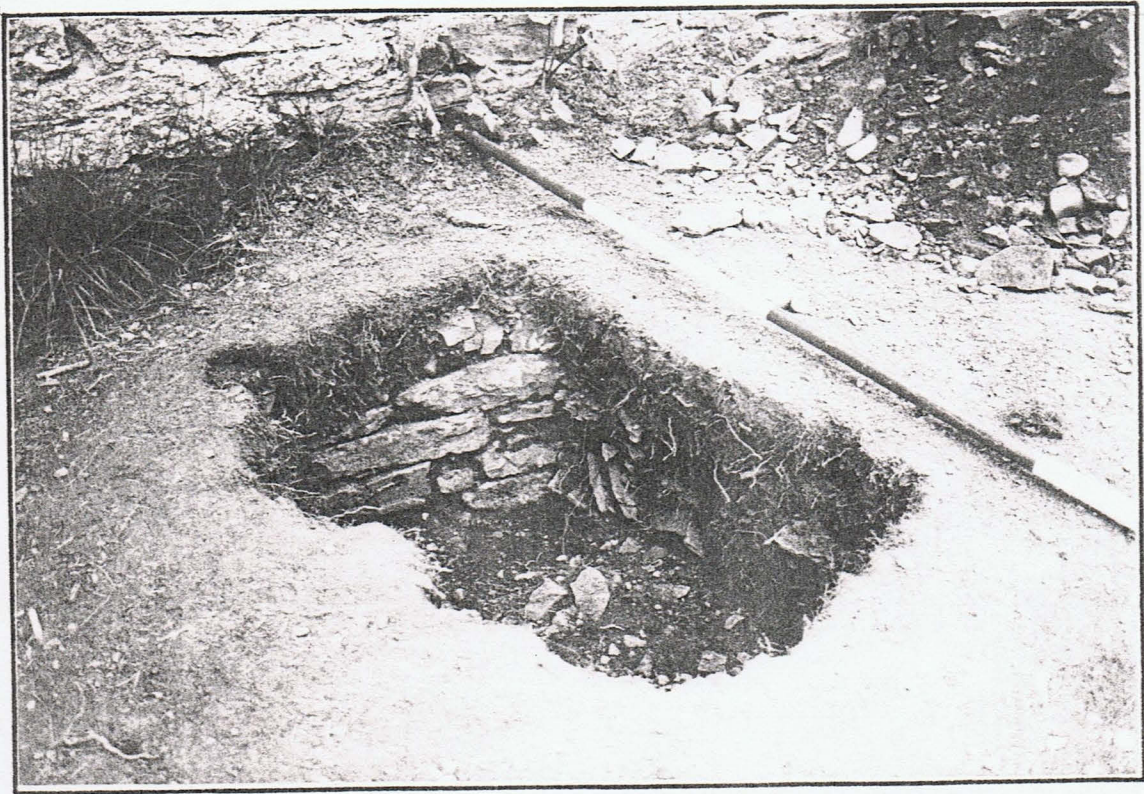
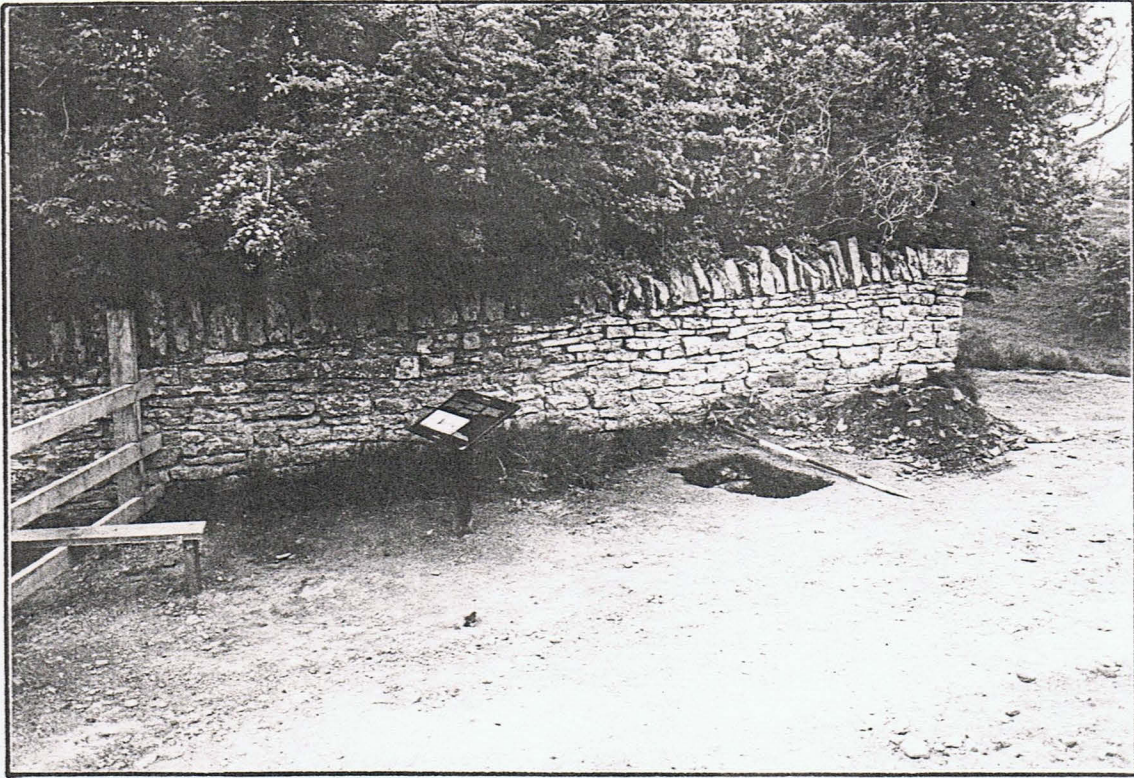
## 3. Conclusions

Due to the limited size of the trenches it is difficult to form any significant conclusions. Trenches 1, 2 and 4 were of no archaeological importance whatsoever, trench 3 contained the footing of a previously unknown wall which may have been associated with an entry to the castle, whilst trenches 5 and 6 mainly contained rubble debris probably associated with the collapse of the tower and the curtain wall.

## 4. Watching Brief on the Areas of Ploughing

Two areas near the newly constructed footbridge were rotavated by Treasure & Son on the 12th May 1993. Although much fragmentary stone was unearthed, it contained many fragments of Victorian and modern pottery probably associated with the Clun fair which is held annually. Turf was laid onto the ploughed areas on completion of the ploughing.





Trench 3 looking south and showing the relationship between the two walls



## 5. The Archive

1 sheet of site drawings  
1 sheet of worked drawings  
12 colour negatives (93/15/7A to 19A) - list  
This document

Trench 1 - no finds

Trench 2 - no finds

Trench 3 - 1 x fragment of brick  
24 sherds of Victorian pottery  
1 x glass fragment  
2 x clay pipe stems

Trench 4 - no finds

Trench 5 - no finds

Trench 6 - 1 x fragment of worked stone

Ploughed areas - no finds kept