

Properties

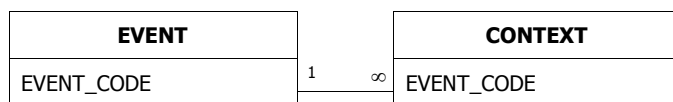
DatasheetFontHeight:	10	DatasheetFontItalic:	False
DatasheetFontName:	Times New Roman	DatasheetFontUnderline:	False
DatasheetFontWeight:	Normal	DatasheetForeColor:	0
DateCreated:	07/11/2003 17:12:29	Description:	Archaeological deposits and features described at the context level
Filter:	((CONTEXT.EVENT_CODE="A RC WHS98"))	LastUpdated:	28/09/2004 11:05:22
OrderBy:	CONTEXT.CONTEXT	OrderByOn:	True
RecordCount:	3986	RowHeight:	285
TabularCharSet:	0	TabularFamily:	18
Updatable:	True		

Columns

Name	Type	Size
CONTEXT	Long Integer	4
FILL OF	Long Integer	4
Updated	Text	50
PERIOD	Text	30
New Sub group	Text	50
PX_Sub-group	Long Integer	4
PX_Rank	Integer	2
PX_MinDate	Long Integer	4
PX_MaxDate	Long Integer	4
TYPE	Text	25
SUB-GROUP	Long Integer	4
INTERPRETATION	Text	50
ASSOCIATION	Text	255
RES_INT	Text	10
COMMENTS	Text	254
EVENT_CODE	Text	50
TRENCH_URL	Text	10

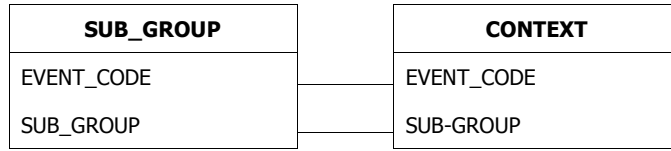
Relationships

EVENTCONTEXT



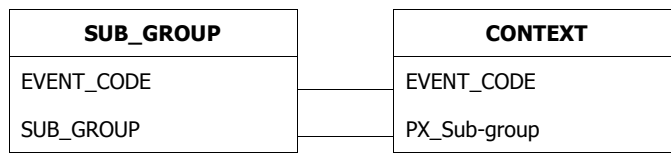
Attributes: Enforced, Cascade Updates
 RelationshipType: One-To-Many

SUB_GROUPCONTEXT



Attributes: Not Enforced
RelationshipType: One-To-Many

SUB_GROUPCONTEXT



Attributes: Not Enforced
RelationshipType: One-To-Many

Properties

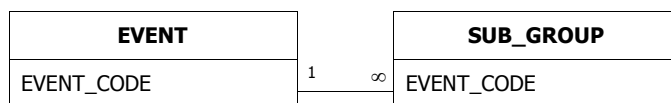
DateCreated:	07/11/2003 17:12:29	Description:	List of individual fieldwork projects producing contexts that exist in this database
LastUpdated:	24/03/2004 09:09:40	OrderByOn:	True
RecordCount:	6	RowHeight:	1185
Updatable:	True		

Columns

Name	Type	Size
tmpEvent	Text	255
EVENT_NAME	Text	40
EVENT_CODE	Text	50
EVENT_TYPE	Text	40
CONTRACTOR	Text	60
DATE	Text	40
GRID (NGR)	Text	13
PROJECT	Text	10
COUNTY	Text	30
DISTRICT	Text	30
PARISH	Text	40
SMR	Text	100
SITE_TYPE	Memo	-
PERIOD:	Text	200
METHOD:	Memo	-
PHASING:	Memo	-
ENVIRO:	Memo	-
FINDS:	Memo	-
GEOLOGY:	Memo	-
CONTEXT_NUM:	Double	8
THREAT:	Memo	-
SAMPLE:	Double	8
SUMMARY:	Memo	-
ARCHIVE:	Memo	-
ACC_NUM:	Text	100
PxProjectNo	Long Integer	4

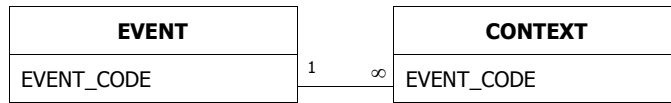
Relationships

EVENTSUB_GROUP



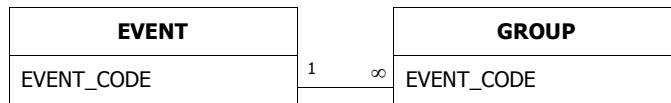
Attributes: Enforced, Cascade Updates
 RelationshipType: One-To-Many

EVENTCONTEXT



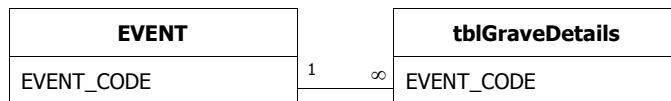
Attributes: Enforced, Cascade Updates
RelationshipType: One-To-Many

EVENTGROUP



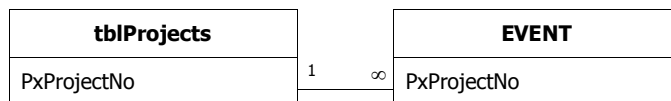
Attributes: Enforced, Cascade Updates
RelationshipType: One-To-Many

EVENTtblGraveDetails



Attributes: Enforced, Cascade Updates
RelationshipType: One-To-Many

tblProjectsEVENT



Attributes: Enforced, Cascade Updates
RelationshipType: One-To-Many

Properties

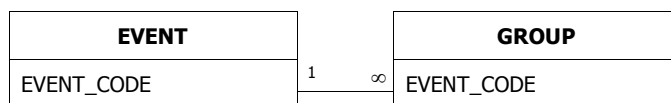
DateCreated:	07/11/2003 17:12:30	Description:	Archaeological deposits and features described at the group level consisting of one or more sub-groups
LastUpdated:	23/03/2004 16:56:58	OrderByOn:	True
RecordCount:	47	RowHeight:	Default
Updatable:	True		

Columns

Name	Type	Size
EVENT_CODE	Text	50
GROUP	Long Integer	4
SUB_GROUPS	Memo	-
PERIOD	Text	50
INTERPRETATION	Text	100
COMMENTS	Memo	-
PX_Interpretation	Text	100
PX_Comment	Memo	-
PX_MinDate	Long Integer	4
PX_MaxDate	Long Integer	4
OldGroup	Long Integer	4

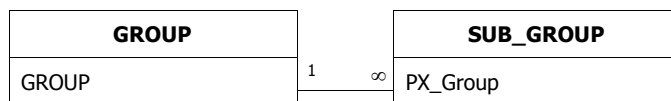
Relationships

EVENTGROUP



Attributes: Enforced, Cascade Updates
 RelationshipType: One-To-Many

GROUPSUB_GROUP



Attributes: Enforced, Cascade Updates
 RelationshipType: One-To-Many

Properties

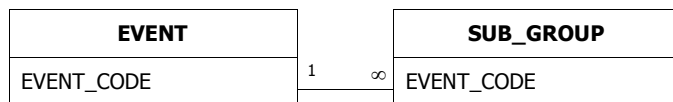
DatasheetFontHeight:	10	DatasheetFontItalic:	False
DatasheetFontName:	Times New Roman	DatasheetFontUnderline:	False
DatasheetFontWeight:	Normal	DatasheetForeColor:	0
DateCreated:	07/11/2003 17:12:30	Description:	Archaeological deposits and features described at the sub-group level consisting of one or more sub-groups
LastUpdated:	28/09/2004 11:05:26	OrderBy:	SUB_GROUP.SUB_GROUP
OrderByOn:	True	RecordCount:	742
RowHeight:	225	TabularCharSet:	0
TabularFamily:	18	Updatable:	True

Columns

Name	Type	Size
EVENT_CODE	Text	50
temp comments	Memo	-
updated	Text	50
Temp group	Text	50
SUB_GROUP	Long Integer	4
CONTEXTS	Memo	-
PERIOD	Text	50
INTERPRETATION	Text	50
COMMENTS	Memo	-
PART OF GROUP	Long Integer	4
PHASE	Long Integer	4
PX_Group	Long Integer	4
PX_ Interpretation	Text	50
PX_Comment	Memo	-
PX_MinDate	Long Integer	4
PX_MaxDate	Long Integer	4

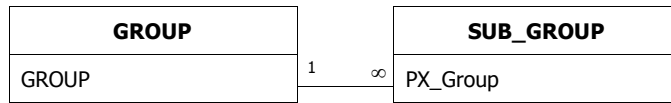
Relationships

EVENTSUB_GROUP



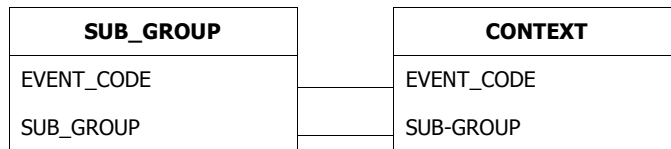
Attributes: Enforced, Cascade Updates
 RelationshipType: One-To-Many

GROUPSUB_GROUP



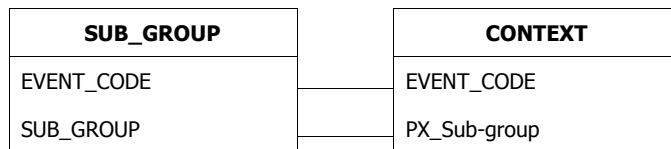
Attributes: Enforced, Cascade Updates
RelationshipType: One-To-Many

SUB_GROUPCONTEXT



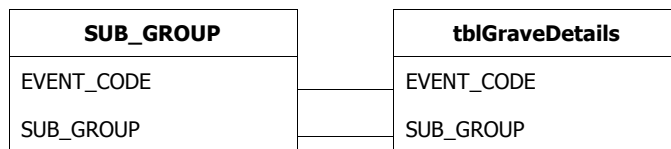
Attributes: Not Enforced
RelationshipType: One-To-Many

SUB_GROUPCONTEXT



Attributes: Not Enforced
RelationshipType: One-To-Many

SUB_GROUPtblGraveDetails



Attributes: Unique, Not Enforced
RelationshipType: One-To-One

Properties

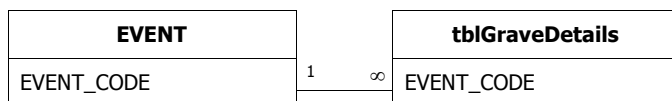
DateCreated:	07/11/2003 17:12:31	Description:	Details of graves and grave types. Applicable only to cemetary sites
LastUpdated:	24/03/2004 09:07:47	OrderByOn:	False
RecordCount:	0	Updatable:	True

Columns

Name	Type	Size
EVENT_CODE	Text	10
SUB_GROUP	Long Integer	4
GRAVE_DEGREES	Long Integer	4
GRAVE_ORIENTATION	Text	50
HEAD_ORIENTATION	Text	50
POT_COUNT	Long Integer	4
NAIL_COUNT	Long Integer	4

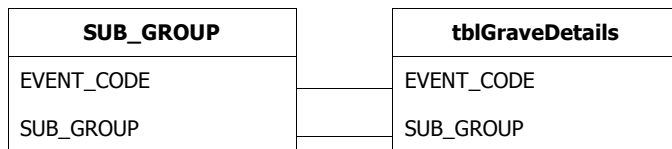
Relationships

EVENTtblGraveDetails



Attributes: Enforced, Cascade Updates
 RelationshipType: One-To-Many

SUB_GROUPtblGraveDetails



Attributes: Unique, Not Enforced
 RelationshipType: One-To-One

Properties

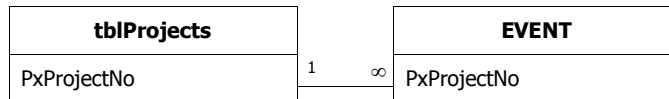
DateCreated:	07/11/2003 17:12:32	Description:	List of all event codes belonging to a CTRL PX Project. Beware ARC 330 98 which crosses more one one project. This should be null valued and is handled using the context values in nProjectChainage
LastUpdated:	24/03/2004 09:09:40	OrderByOn:	False
RecordCount:	1	Updatable:	True

Columns

Name	Type	Size
PxProjectNo	Long Integer	4
PxProjectName	Text	150

Relationships

tblProjectsEVENT



Attributes: Enforced, Cascade Updates
RelationshipType: One-To-Many

Properties

DateCreated:	07/11/2003 17:12:33	Description:	List of recommended values for describing the interpretation of contexts
LastUpdated:	07/11/2003 17:12:33	OrderByOn:	False
RecordCount:	34	Updatable:	True

Columns

<u>Name</u>	<u>Type</u>	<u>Size</u>
Keyword	Text	50

Properties

DateCreated:	07/11/2003 17:12:33	Description:	List of permitted values for describing the type of deposit to which a context number has been assigned
LastUpdated:	07/11/2003 17:12:33	OrderByOn:	False
RecordCount:	10	Updatable:	True

Columns

<u>Name</u>	<u>Type</u>	<u>Size</u>
Keyword	Text	50

Properties

DateCreated:	07/11/2003 17:12:33	Description:	List of recommended keywords for describing the interpretation of groups of archaeological deposits or features
LastUpdated:	07/11/2003 17:12:34	OrderByOn:	False
RecordCount:	64	Updatable:	True

Columns

<u>Name</u>	<u>Type</u>	<u>Size</u>
GroupInterpretation	Text	50

Properties

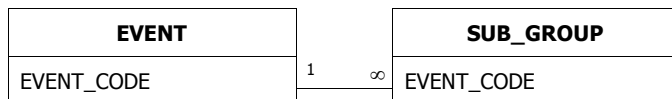
DateCreated:	07/11/2003 17:12:34	Description:	List of recommended terms for describing the interpretation of sub-groups of archaeological deposits and features
LastUpdated:	07/11/2003 17:12:34	OrderByOn:	False
RecordCount:	36	RowHeight:	540
Updatable:	True		

Columns

<u>Name</u>	<u>Type</u>	<u>Size</u>
Keyword	Text	50
ScopeNote	Text	254

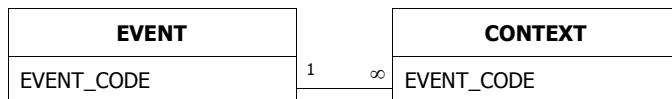
Relationships

EVENTSUB_GROUP



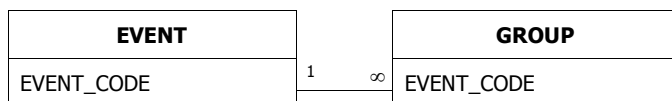
Attributes: Enforced, Cascade Updates
RelationshipType: One-To-Many

EVENTCONTEXT



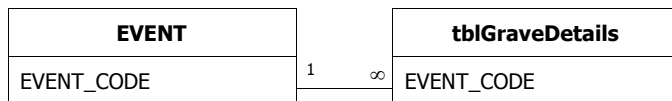
Attributes: Enforced, Cascade Updates
RelationshipType: One-To-Many

EVENTGROUP



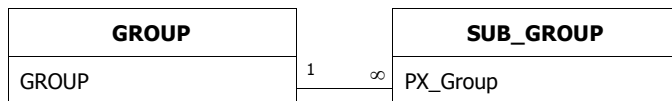
Attributes: Enforced, Cascade Updates
RelationshipType: One-To-Many

EVENTtblGraveDetails



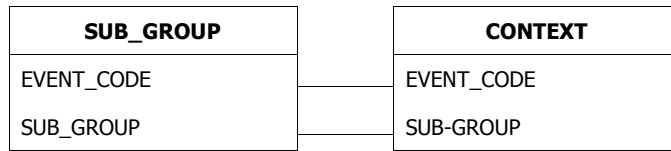
Attributes: Enforced, Cascade Updates
RelationshipType: One-To-Many

GROUPSUB_GROUP



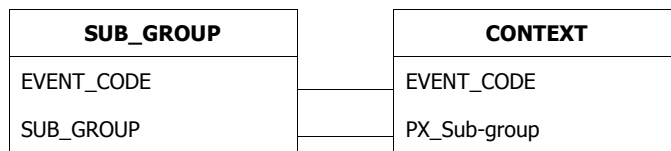
Attributes: Enforced, Cascade Updates
RelationshipType: One-To-Many

SUB_GROUPCONTEXT



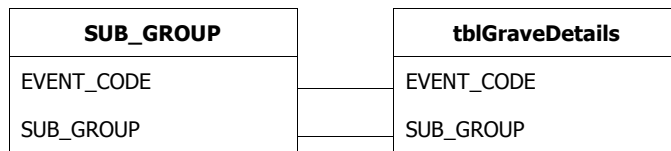
Attributes: Not Enforced
RelationshipType: One-To-Many

SUB_GROUPCONTEXT



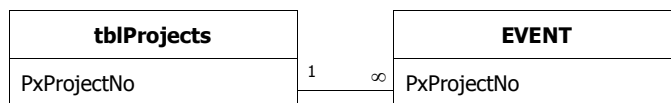
Attributes: Not Enforced
RelationshipType: One-To-Many

SUB_GROUPtblGraveDetails



Attributes: Unique, Not Enforced
RelationshipType: One-To-One

tblProjectsEVENT



Attributes: Enforced, Cascade Updates
RelationshipType: One-To-Many