

Properties

DateCreated:	18/11/2005 09:12:47	LastUpdated:	18/11/2005 09:12:47
OrderByOn:	False	RecordCount:	1891
Updatable:	True		

Columns

<u>Name</u>	<u>Type</u>	<u>Size</u>
ID	Long Integer	4
Event_Code	Text	255
Context	Double	8
Period	Text	255
E_Date	Double	8
L_Date	Double	8
Fabric	Double	8
Form	Text	255
Corners	Double	8
Weight	Double	8
Length	Text	255
Breadth	Text	255
Thickness	Text	255
Number	Double	8
Comments	Text	255

Properties

DateCreated:	18/11/2005 09:12:47	LastUpdated:	18/11/2005 09:12:48
OrderByOn:	False	RecordCount:	535
Updatable:	True		

Columns

<u>Name</u>	<u>Type</u>	<u>Size</u>
Context	Double	8
CBM_Weight	Double	8
CBM_Number	Double	8

Table: coin id

Page: 3

Properties

DateCreated:	18/11/2005 09:12:48	LastUpdated:	18/11/2005 09:12:48
OrderByOn:	False	RecordCount:	51
Updatable:	True		

Columns

<u>Name</u>	<u>Type</u>	<u>Size</u>
id number	Long Integer	4
Type	Text	255
Description	Text	255
SF number	Double	8
Context	Double	8

Properties

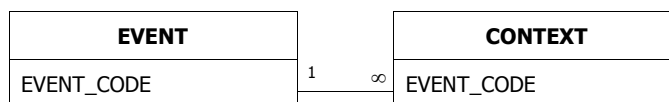
DateCreated:	07/11/2003 17:12:54	Description:	Archaeological deposits and features described at the context level
LastUpdated:	07/11/2003 17:12:59	OrderByOn:	True
RecordCount:	3864	Updatable:	True

Columns

Name	Type	Size
EVENT_CODE	Text	50
CONTEXT	Long Integer	4
TRENCH_URL	Text	10
TYPE	Text	25
FILL OF	Long Integer	4
SUB-GROUP	Long Integer	4
INTERPRETATION	Text	50
ASSOCIATION	Text	255
PERIOD	Text	30
RES_INT	Text	10
COMMENTS	Text	254
PX_Sub-group	Long Integer	4
PX_Rank	Integer	2
PX_MinDate	Long Integer	4
PX_MaxDate	Long Integer	4

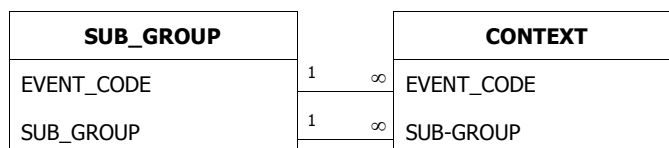
Relationships

EVENTCONTEXT



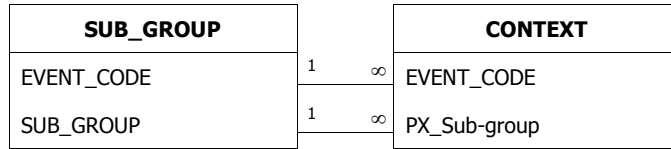
Attributes: Enforced, Cascade Updates
 RelationshipType: One-To-Many

SUB_GROUPCONTEXT



Attributes: Enforced, Cascade Updates
 RelationshipType: One-To-Many

SUB_GROUPCONTEXT



Attributes:

RelationshipType:

Enforced, Cascade Updates

One-To-Many

Properties

DateCreated:	18/11/2005 09:12:48	LastUpdated:	18/11/2005 09:12:48
OrderByOn:	False	RecordCount:	251
Updatable:	True		

Columns

<u>Name</u>	<u>Type</u>	<u>Size</u>
Site-code	Text	50
Sample	Long Integer	4
Context	Long Integer	4
Flot size (ml)	Long Integer	4
Grain	Text	50
Id-Grain	Text	50
Chaff	Text	50
Id-Chaff	Text	50
Weed seeds	Text	50
Id-weeds	Text	50
Other	Text	50
Id-Other	Text	50
Charcoal	Text	50
Id-charcoal	Text	50
Comments	Text	50

Properties

DateCreated:	18/11/2005 09:12:48	LastUpdated:	18/11/2005 09:12:48
OrderByOn:	False	RecordCount:	27
Updatable:	True		

Columns

<u>Name</u>	<u>Type</u>	<u>Size</u>
Sample	Long Integer	4
Context	Long Integer	4
Flot size (ml)	Long Integer	4
Grain	Text	50
Id-Grain	Text	50
Chaff	Text	50
Id-Chaff	Text	50
Weed seeds	Text	50
Id-weeds	Text	50
Other	Text	50
Id-Other	Text	50
Charcoal	Text	50
Id-charcoal	Text	50
Comments	Text	50

Properties

DatasheetFontHeight:	10	DatasheetFontItalic:	False
DatasheetFontName:	Arial	DatasheetFontUnderline:	False
DatasheetFontWeight:	Normal	DatasheetForeColor:	0
DateCreated:	18/11/2005 09:12:48	FrozenColumns:	3
LastUpdated:	18/11/2005 09:12:48	OrderByOn:	True
RecordCount:	476	TabularCharSet:	0
TabularFamily:	34	Updatable:	True

Columns

Name	Type	Size
ID	Long Integer	4
SITECODE	Text	255
SSNUM	Double	8
CTX	Double	8
Sample present	Yes/No	1
Sample type	Text	50
SPIT	Text	255
BOXNO	Double	8
Sample collected for	Text	255
FILL_OF	Double	8
GROUPNO	Text	255
Feature	Text	255
Notes	Text	255
Spotdate	Text	255
Mesh size	Double	8
Subsample for	Text	255
VOL:flot	Text	255
VOL:wet-sieve	Text	255
WGT	Text	255
NO FLOT?	Yes/No	1
>10mm sorted	Yes/No	1
10-4mm process	Text	50
10-4mm kept for	Text	50
4-2mm process	Text	50
4-2mm kept for	Text	50
2-0,5mm process	Text	50
2-0,5mm kept for	Text	50
Subsample taken	Yes/No	1
Processing comments	Text	50

Properties

DateCreated: 02/03/2006 10:29:31 LastUpdated: 02/03/2006 10:29:31
RecordCount: 295 Updatable: True

Columns

Name	Type	Size
ID	Long Integer	4
EVENT_CODE	Text	255
IDENTIFIER	Double	8
KEY	Text	255
EVENTCODE	Text	255
SOURCENO	Text	255
INTERPRETA	Text	255
PERIOD	Text	255
PX_MINDATE	Text	255
PX_MAXDATE	Text	255
ILEVEL	Text	255

Properties

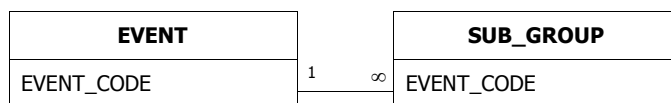
DateCreated:	07/11/2003 17:12:54	Description:	List of individual fieldwork projects producing contexts that exist in this database
LastUpdated:	07/11/2003 17:12:59	OrderByOn:	True
RecordCount:	7	RowHeight:	1185
Updatable:	True		

Columns

Name	Type	Size
tmpEvent	Text	255
EVENT_NAME	Text	40
EVENT_CODE	Text	50
EVENT_TYPE	Text	40
CONTRACTOR	Text	60
DATE	Text	40
GRID (NGR)	Text	13
PROJECT	Text	10
COUNTY	Text	30
DISTRICT	Text	30
PARISH	Text	40
SMR	Text	100
SITE_TYPE	Memo	-
PERIOD:	Text	200
METHOD:	Memo	-
PHASING:	Memo	-
ENVIRO:	Memo	-
FINDS:	Memo	-
GEOLOGY:	Memo	-
CONTEXT_NUM:	Double	8
THREAT:	Memo	-
SAMPLE:	Double	8
SUMMARY:	Memo	-
ARCHIVE:	Memo	-
ACC_NUM:	Text	100
PxProjectNo	Long Integer	4

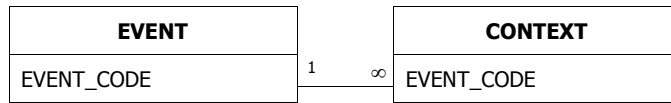
Relationships

EVENTSUB_GROUP



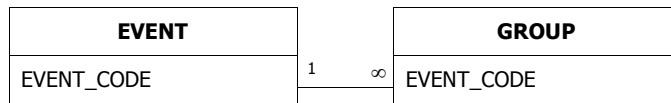
Attributes: Enforced, Cascade Updates
 RelationshipType: One-To-Many

EVENTCONTEXT



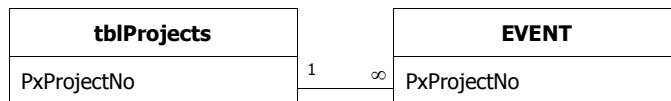
Attributes: Enforced, Cascade Updates
RelationshipType: One-To-Many

EVENTGROUP



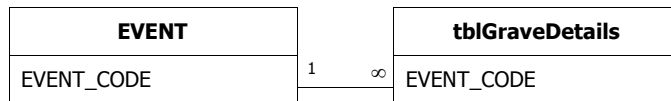
Attributes: Enforced, Cascade Updates
RelationshipType: One-To-Many

tblProjectsEVENT



Attributes: Enforced, Cascade Updates
RelationshipType: One-To-Many

EVENTtblGraveDetails



Attributes: Enforced, Cascade Updates
RelationshipType: One-To-Many

Properties

DateCreated:	18/11/2005 09:12:48	LastUpdated:	18/11/2005 09:12:49
OrderByOn:	False	RecordCount:	2747
RowHeight:	300	Updatable:	True

Columns

Name	Type	Size
FragmentID	Double	8
EventCode	Text	30
Context	Long Integer	4
SmallFind	Text	50
Taxon	Text	255
Element	Text	255
Side	Text	3
Z1	Yes/No	1
Z2	Yes/No	1
Z3	Yes/No	1
Z4	Yes/No	1
Z5	Yes/No	1
Z6	Yes/No	1
Z7	Yes/No	1
Z8	Yes/No	1
Proximal	Text	255
Distal	Text	3
Age	Text	4
Sex	Text	3
Pathology	Yes/No	1
Butchery	Yes/No	1
Burnt	Yes/No	1
Gnaw	Yes/No	1
FreshBreak	Yes/No	1
Surface	Text	3
Condition	Double	8
Measured	Yes/No	1
AssociatedBone	Double	8
Weight(g)	Double	8
Number	Double	8
Notes	Text	255
Photo?	Yes/No	1

Properties

DateCreated:	13/04/2004 12:04:06	Filter:	((GISFinal.EventCode="ARC THM98"))
LastUpdated:	11/04/2007 16:25:22	OrderByOn:	False
RecordCount:	1484	Updatable:	True

Columns

<u>Name</u>	<u>Type</u>	<u>Size</u>
Key	Text	255
EventCode	Text	50
SourceNo	Long Integer	4
Interpreta	Text	255
Period	Text	255
PX_MinDate	Long Integer	4
PX_MaxDate	Long Integer	4
SourceComment	Memo	-
Ilevel	Text	255

Properties

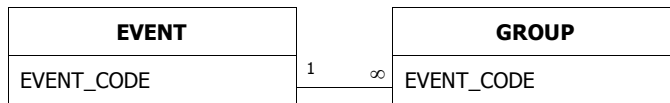
DateCreated:	07/11/2003 17:12:55	Description:	Archaeological deposits and features described at the group level consisting of one or more sub-groups
LastUpdated:	18/11/2005 09:09:51	OrderByOn:	True
RecordCount:	11	RowHeight:	Default
Updatable:	True		

Columns

Name	Type	Size
EVENT_CODE	Text	50
GROUP	Long Integer	4
SUB_GROUPS	Memo	-
PERIOD	Text	50
INTERPRETATION	Text	100
COMMENTS	Memo	-
PX_Interpretation	Text	100
PX_Comment	Memo	-
PX_MinDate	Long Integer	4
PX_MaxDate	Long Integer	4
OldGroup	Long Integer	4

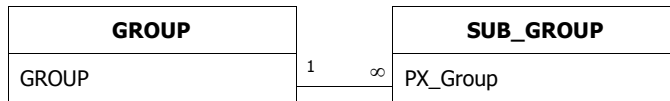
Relationships

EVENTGROUP



Attributes: Enforced, Cascade Updates
 RelationshipType: One-To-Many

GROUPSUB_GROUP



Attributes: Enforced, Cascade Updates
 RelationshipType: One-To-Many

Properties

DateCreated:	18/11/2005 09:12:49	LastUpdated:	18/11/2005 09:12:49
OrderByOn:	False	RecordCount:	90
Updatable:	True		

Columns

Name	Type	Size
Event_Code	Text	24
Context Number	Long Integer	4
Specialism	Text	20
FabricGroup	Text	2
FabricType	Text	4
ComponentPart	Text	1
ComponentPartType	Integer	2
VesselForm	Text	2
SherdCount	Long Integer	4
Weight	Single	4
RimDiameter	Long Integer	4
RimPercent	Byte	1
SurfaceTreat	Text	20
Manufacture	Text	20
Illustration	Yes/No	1
Condition	Text	15
Comments	Memo	-
Decoration	Text	255
EVE	Single	4
Min_Date	Long Integer	4
Max_Date	Long Integer	4

Properties

DateCreated:	13/04/2004 12:04:06	Description:	Temporary table for processing memo field comments for attaching to qryOutputPX
LastUpdated:	13/04/2004 12:04:07	OrderByOn:	False
RecordCount:	4107	Updatable:	True

Columns

Name	Type	Size
EVENT_CODE	Text	50
SourceNumber	Long Integer	4
Ilevel	Text	50
SourceComment	Memo	-
PX_MinDate	Long Integer	4
PX_MaxDate	Long Integer	4

Properties

DatasheetFontHeight:	8	DatasheetFontItalic:	False
DatasheetFontName:	Arial	DatasheetFontUnderline:	False
DatasheetFontWeight:	Normal	DatasheetForeColor:	33554432
DateCreated:	18/11/2005 09:12:49	Description:	List of sherd groups within a context as identified by the specialist
LastUpdated:	18/11/2005 09:12:50	OrderByOn:	True
RecordCount:	5619	TabularCharSet:	0
TabularFamily:	34	Updatable:	True

Columns

Name	Type	Size
RPotRecordID	Text	10
EVENT_CODE	Text	24
CONTEXT	Long Integer	4
CAT	Text	9
Ware	Text	1
NoSH	Long Integer	4
Wt	Long Integer	4
MV	Long Integer	4
TY	Text	6
DVT	Text	50
IT	Text	2
COM	Text	1
RIM	Integer	2
DIA	Long Integer	4
EVE	Single	4
BASE	Integer	2
H	Integer	2
SP	Integer	2
GR	Text	1
CO	Text	1
BZ	Text	1
BL	Text	1
LA	Text	1
RU	Text	1
BA	Text	1
RO	Text	1
PR	Text	1
PW	Text	1
CB	Text	1
IND	Text	1
IM	Text	1
ST	Text	1
RL	Text	1
OT	Text	1
Confid	Text	20
Joins	Integer	2
Wear	Integer	2

Table: RBSherdGroups		Page: 18
Soot	Integer	2
Repair	Integer	2
Reuse	Integer	2
RecordDateMin	Long Integer	4
RecordDateMax	Long Integer	4
Draw	Long Integer	4
Comment	Text	255
Timestamp	Date/Time	8
LastEdit	Date/Time	8

Table: slac

Page: 19

Properties

DateCreated:	18/11/2005 09:12:51	LastUpdated:	18/11/2005 09:12:51
OrderByOn:	False	RecordCount:	385
Updatable:	True		

Columns

<u>Name</u>	<u>Type</u>	<u>Size</u>
ID	Long Integer	4
Context	Long Integer	4
Sample	Long Integer	4
Material	Text	255
Weight	Long Integer	4
Length	Long Integer	4
Width	Long Integer	4
Depth	Long Integer	4
Comments	Memo	-

Properties

DateCreated:	18/11/2005 09:12:51	DefaultView:	Datasheet
Description:	Descriptions to objects identified by specialists who deal with objects that are small finds	LastUpdated:	18/11/2005 09:12:51
OrderByOn:	True	Orientation:	Left-to-Right
RecordCount:	1089	Updatable:	True

Columns

Name	Type	Size
RecordID	Text	10
EVENT_CODE	Text	24
CONTEXT	Long Integer	4
WorkStage	Text	10
SF_Number	Long Integer	4
ObjectIdentification	Text	50
Material	Text	50
Material2	Text	50
NoOfObjects	Long Integer	4
Weight	Long Integer	4
Function	Text	50
Typology	Text	50
Condition	Text	10
Completeness	Text	50
ObjectDescription	Memo	-
Length	Single	4
Width	Single	4
Thickness	Single	4
Diameter	Single	4
X-RayNo	Text	50
PhotoNo	Text	50
ConservationNo	Text	50
DoIllustrate	Text	3
DoPhotograph	Text	3
SampleNo	Long Integer	4
Specialist	Text	50
Min_Date	Long Integer	4
Max_Date	Long Integer	4
Timestamp	Date/Time	8
LastEdit	Date/Time	8
UserName	Text	255

Properties

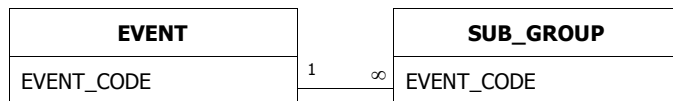
DateCreated:	07/11/2003 17:12:56	Description:	Archaeological deposits and features described at the sub-group level consisting of one or more sub-groups
LastUpdated:	02/03/2006 10:28:03	OrderByOn:	True
RecordCount:	243	Updatable:	True

Columns

Name	Type	Size
EVENT_CODE	Text	50
SUB_GROUP	Long Integer	4
CONTEXTS	Memo	-
PERIOD	Text	50
INTERPRETATION	Text	50
COMMENTS	Memo	-
PART OF GROUP	Long Integer	4
PHASE	Long Integer	4
PX_Group	Long Integer	4
PX_Interpretation	Text	50
PX_Comment	Memo	-
PX_MinDate	Long Integer	4
PX_MaxDate	Long Integer	4

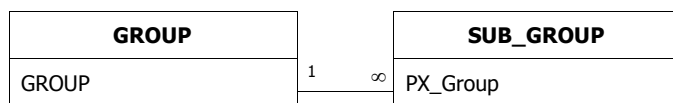
Relationships

EVENTSUB_GROUP



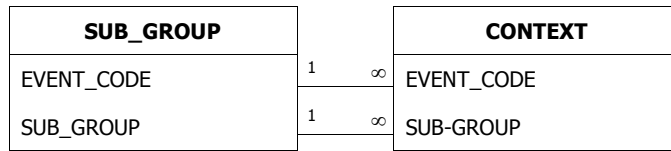
Attributes: Enforced, Cascade Updates
 RelationshipType: One-To-Many

GROUPSUB_GROUP



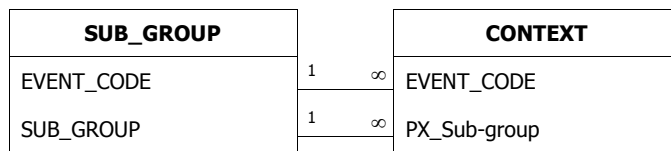
Attributes: Enforced, Cascade Updates
 RelationshipType: One-To-Many

SUB_GROUPCONTEXT



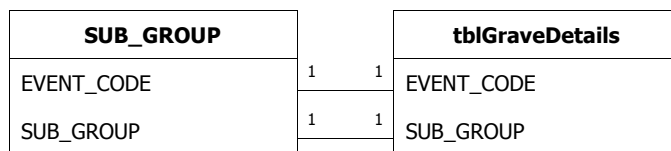
Attributes: Enforced, Cascade Updates
 RelationshipType: One-To-Many

SUB_GROUPCONTEXT



Attributes: Enforced, Cascade Updates
 RelationshipType: One-To-Many

SUB_GROUPtblGraveDetails



Attributes: Unique, Enforced, Cascade Updates
 RelationshipType: One-To-One

Properties

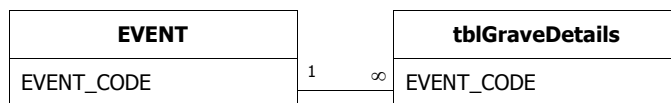
DateCreated:	07/11/2003 17:12:56	Description:	Details of graves and grave types. Applicable only to cemetary sites
LastUpdated:	07/11/2003 17:12:59	OrderByOn:	False
RecordCount:	0	Updatable:	True

Columns

Name	Type	Size
EVENT_CODE	Text	10
SUB_GROUP	Long Integer	4
GRAVE_DEGREES	Long Integer	4
GRAVE_ORIENTATION	Text	50
HEAD_ORIENTATION	Text	50
POT_COUNT	Long Integer	4
NAIL_COUNT	Long Integer	4

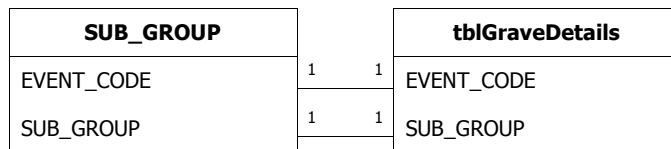
Relationships

EVENTtblGraveDetails



Attributes: Enforced, Cascade Updates
 RelationshipType: One-To-Many

SUB_GROUPtblGraveDetails



Attributes: Unique, Enforced, Cascade Updates
 RelationshipType: One-To-One

Properties

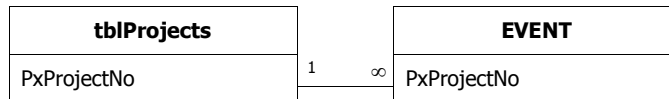
DateCreated:	07/11/2003 17:12:57	Description:	List of all event codes belonging to a CTRL PX Project. Beware ARC 330 98 which crosses more one one project. This should be null valued and is handled using the context values in nProjectChainage
LastUpdated:	07/11/2003 17:12:59	OrderByOn:	False
RecordCount:	1	Updatable:	True

Columns

Name	Type	Size
PxProjectNo	Long Integer	4
PxProjectName	Text	150

Relationships

tblProjectsEVENT



Attributes: Enforced, Cascade Updates
RelationshipType: One-To-Many

Properties

DateCreated:	07/11/2003 17:12:58	Description:	List of recommended values for describing the interpretation of contexts
LastUpdated:	07/11/2003 17:12:58	OrderByOn:	False
RecordCount:	34	Updatable:	True

Columns

<u>Name</u>	<u>Type</u>	<u>Size</u>
Keyword	Text	50

Properties

DateCreated:	07/11/2003 17:12:58	Description:	List of permitted values for describing the type of deposit to which a context umber has been assigned
LastUpdated:	07/11/2003 17:12:58	OrderByOn:	False
RecordCount:	10	Updatable:	True

Columns

<u>Name</u>	<u>Type</u>	<u>Size</u>
Keyword	Text	50

Properties

DateCreated:	07/11/2003 17:12:58	Description:	List of recommended keywords for describing the interpretation of groups of archaeological deposits or features
LastUpdated:	07/11/2003 17:12:59	OrderByOn:	False
RecordCount:	64	Updatable:	True

Columns

<u>Name</u>	<u>Type</u>	<u>Size</u>
GroupInterpretation	Text	50

Properties

DateCreated:	07/11/2003 17:12:59	Description:	List of recommended terms for describing the interpretation of sub-groups of archaeological deposits and features
LastUpdated:	07/11/2003 17:12:59	OrderByOn:	False
RecordCount:	36	RowHeight:	540
Updatable:	True		

Columns

Name	Type	Size
Keyword	Text	50
ScopeNote	Text	254

Properties

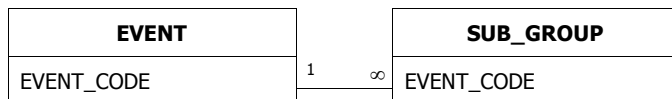
DateCreated:	18/11/2005 09:12:51	Description:	Descriptions to objects identified by specialists who deal with objects that are small finds
LastUpdated:	18/11/2005 09:12:51	OrderByOn:	False
RecordCount:	78	Updatable:	True

Columns

Name	Type	Size
RecordID	Text	10
EVENT_CODE	Text	24
CONTEXT	Long Integer	4
WorkStage	Text	10
SF_Number	Long Integer	4
ObjectIdentification	Text	50
Material	Text	50
Material2	Text	50
NoOfObjects	Long Integer	4
Weight	Long Integer	4
Function	Text	50
Typology	Text	50
Condition	Text	10
Completeness	Text	50
ObjectDescription	Memo	-
Length	Single	4
Width	Single	4
Thickness	Single	4
Diameter	Single	4
X-RayNo	Text	50
PhotoNo	Text	50
ConservationNo	Text	50
DoIllustrate	Text	3
DoPhotograph	Text	3
SampleNo	Long Integer	4
Specialist	Text	50
Min_Date	Long Integer	4
Max_Date	Long Integer	4
Timestamp	Date/Time	8
LastEdit	Date/Time	8
UserName	Text	255

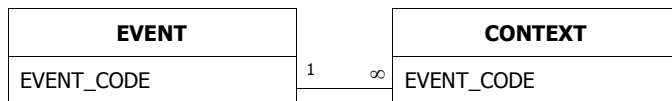
Relationships

EVENTSUB_GROUP



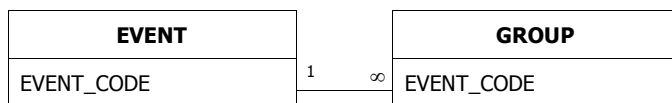
Attributes: Enforced, Cascade Updates
RelationshipType: One-To-Many

EVENTCONTEXT



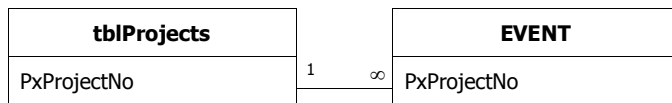
Attributes: Enforced, Cascade Updates
RelationshipType: One-To-Many

EVENTGROUP



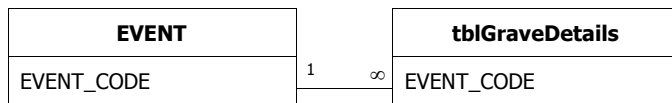
Attributes: Enforced, Cascade Updates
RelationshipType: One-To-Many

tblProjectsEVENT



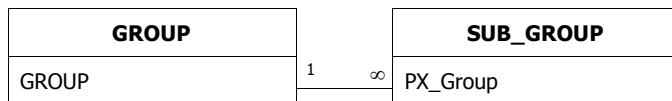
Attributes: Enforced, Cascade Updates
RelationshipType: One-To-Many

EVENTtblGraveDetails



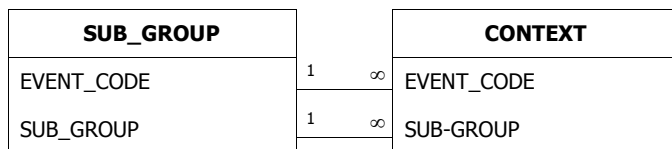
Attributes: Enforced, Cascade Updates
RelationshipType: One-To-Many

GROUPSUB_GROUP



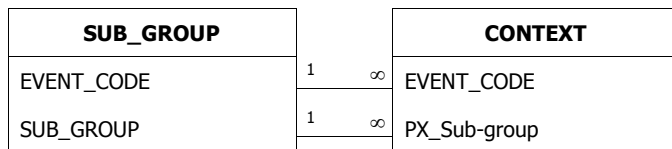
Attributes: Enforced, Cascade Updates
 RelationshipType: One-To-Many

SUB_GROUPCONTEXT



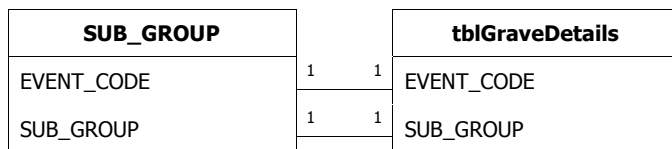
Attributes: Enforced, Cascade Updates
 RelationshipType: One-To-Many

SUB_GROUPCONTEXT



Attributes: Enforced, Cascade Updates
 RelationshipType: One-To-Many

SUB_GROUPtblGraveDetails



Attributes: Unique, Enforced, Cascade Updates
 RelationshipType: One-To-One