

**Properties**

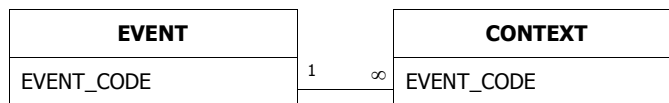
DateCreated:	07/11/2003 17:13:16	Description:	Archaeological deposits and features described at the context level
Filter:	((CONTEXT.[PX_Sub-group]=205))	LastUpdated:	23/07/2004 11:36:46
OrderByOn:	False	RecordCount:	358
RowHeight:	540	Updatable:	True

**Columns**

Name	Type	Size
EVENT_CODE	Text	50
CONTEXT	Long Integer	4
TRENCH_URL	Text	10
TYPE	Text	25
FILL OF	Long Integer	4
SUB-GROUP	Long Integer	4
INTERPRETATION	Text	50
ASSOCIATION	Text	255
PERIOD	Text	30
RES_INT	Text	10
COMMENTS	Text	254
PX_Sub-group	Long Integer	4
PX_Rank	Integer	2
PX_MinDate	Long Integer	4
PX_MaxDate	Long Integer	4

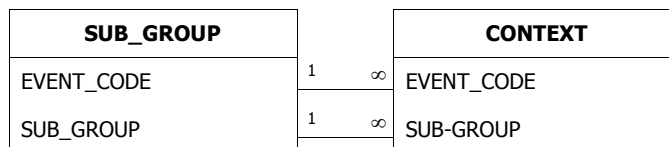
**Relationships**

**EVENTCONTEXT**



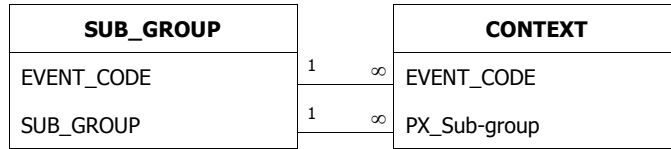
Attributes: Enforced, Cascade Updates  
 RelationshipType: One-To-Many

**SUB\_GROUPCONTEXT**



Attributes: Enforced, Cascade Updates  
 RelationshipType: One-To-Many

**SUB\_GROUPCONTEXT**



Attributes:

RelationshipType:

Enforced, Cascade Updates

One-To-Many

**Properties**

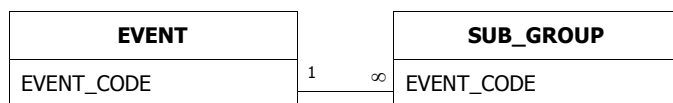
DateCreated:	07/11/2003 17:13:16	Description:	List of individual fieldwork projects producing contexts that exist in this database
LastUpdated:	07/11/2003 17:13:21	OrderByOn:	True
RecordCount:	4	RowHeight:	1185
Updatable:	True		

**Columns**

Name	Type	Size
tmpEvent	Text	255
EVENT_NAME	Text	40
EVENT_CODE	Text	50
EVENT_TYPE	Text	40
CONTRACTOR	Text	60
DATE	Text	40
GRID (NGR)	Text	13
PROJECT	Text	10
COUNTY	Text	30
DISTRICT	Text	30
PARISH	Text	40
SMR	Text	100
SITE_TYPE	Memo	-
PERIOD:	Text	200
METHOD:	Memo	-
PHASING:	Memo	-
ENVIRO:	Memo	-
FINDS:	Memo	-
GEOLOGY:	Memo	-
CONTEXT_NUM:	Double	8
THREAT:	Memo	-
SAMPLE:	Double	8
SUMMARY:	Memo	-
ARCHIVE:	Memo	-
ACC_NUM:	Text	100
PxProjectNo	Long Integer	4

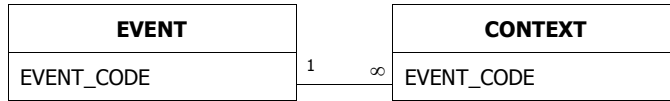
**Relationships**

**EVENTSUB\_GROUP**



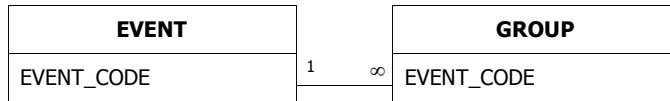
Attributes: Enforced, Cascade Updates  
 RelationshipType: One-To-Many

**EVENTCONTEXT**



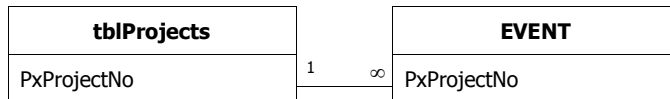
Attributes: Enforced, Cascade Updates  
RelationshipType: One-To-Many

**EVENTGROUP**



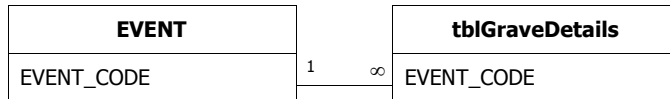
Attributes: Enforced, Cascade Updates  
RelationshipType: One-To-Many

**tblProjectsEVENT**



Attributes: Enforced, Cascade Updates  
RelationshipType: One-To-Many

**EVENTtblGraveDetails**



Attributes: Enforced, Cascade Updates  
RelationshipType: One-To-Many

**Properties**

DateCreated:	13/04/2004 12:07:16	LastUpdated:	13/04/2004 12:07:16
OrderByOn:	False	RecordCount:	501
Updatable:	True		

**Columns**

<u>Name</u>	<u>Type</u>	<u>Size</u>
Key	Text	255
EventCode	Text	50
SourceNo	Long Integer	4
Interpreta	Text	255
Period	Text	255
PX_MinDate	Long Integer	4
PX_MaxDate	Long Integer	4
SourceComment	Memo	-
Ilevel	Text	255

**Properties**

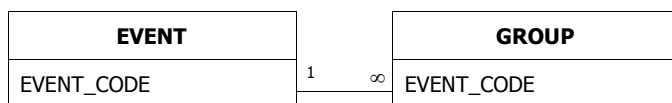
DateCreated:	07/11/2003 17:13:17	Description:	Archaeological deposits and features described at the group level consisting of one or more sub-groups
LastUpdated:	03/08/2004 10:01:30	OrderByOn:	True
RecordCount:	8	RowHeight:	1065
Updatable:	True		

**Columns**

Name	Type	Size
EVENT_CODE	Text	50
GROUP	Long Integer	4
SUB_GROUPS	Memo	-
PERIOD	Text	50
INTERPRETATION	Text	100
COMMENTS	Memo	-
PX_Interpretation	Text	100
PX_Comment	Memo	-
PX_MinDate	Long Integer	4
PX_MaxDate	Long Integer	4
OldGroup	Long Integer	4

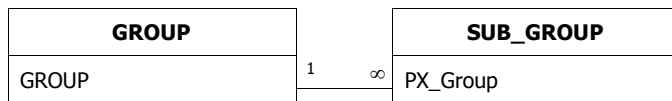
**Relationships**

**EVENTGROUP**



Attributes: Enforced, Cascade Updates  
 RelationshipType: One-To-Many

**GROUPSUB\_GROUP**



Attributes: Enforced, Cascade Updates  
 RelationshipType: One-To-Many

**Properties**

DateCreated:	13/04/2004 12:07:16	Description:	Temporary table for processing memo field comments for attaching to qryOutputPX
LastUpdated:	13/04/2004 12:07:16	OrderByOn:	False
RecordCount:	421	Updatable:	True

**Columns**

Name	Type	Size
EVENT_CODE	Text	50
SourceNumber	Long Integer	4
Ilevel	Text	50
SourceComment	Memo	-
PX_MinDate	Long Integer	4
PX_MaxDate	Long Integer	4

**Properties**

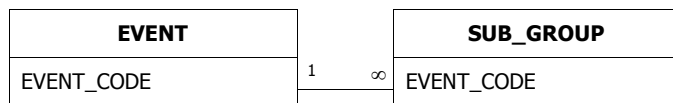
DateCreated:	07/11/2003 17:13:18	Description:	Archaeological deposits and features described at the sub-group level consisting of one or more sub-groups
Filter:	((SUB_GROUP.[PART OF GROUP]=47500))	LastUpdated:	18/08/2004 09:47:29
OrderBy:	SUB_GROUP.SUB_GROUP	OrderByOn:	True
RecordCount:	63	RowHeight:	1500
Updatable:	True		

**Columns**

Name	Type	Size
EVENT_CODE	Text	50
SUB_GROUP	Long Integer	4
CONTEXTS	Memo	-
PERIOD	Text	50
INTERPRETATION	Text	50
COMMENTS	Memo	-
PART OF GROUP	Long Integer	4
PHASE	Long Integer	4
PX_Group	Long Integer	4
PX_Interpretation	Text	50
PX_Comment	Memo	-
PX_MinDate	Long Integer	4
PX_MaxDate	Long Integer	4

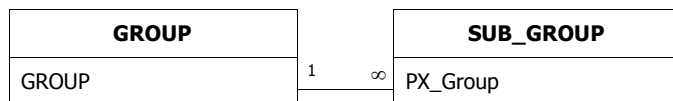
**Relationships**

**EVENTSUB\_GROUP**



Attributes: Enforced, Cascade Updates  
 RelationshipType: One-To-Many

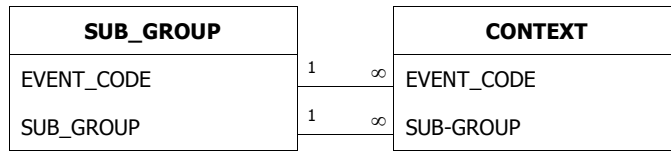
**GROUPSUB\_GROUP**



Attributes: Enforced, Cascade Updates  
 RelationshipType: One-To-Many

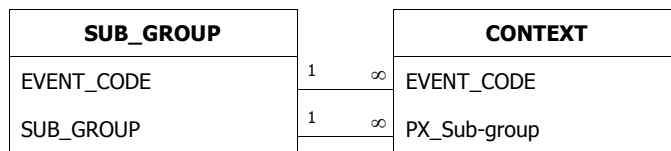


**SUB\_GROUPCONTEXT**



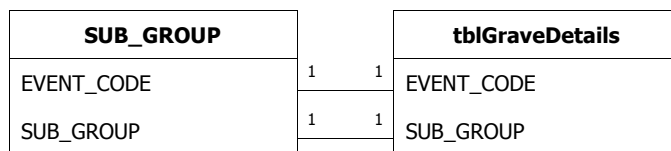
Attributes: Enforced, Cascade Updates  
 RelationshipType: One-To-Many

**SUB\_GROUPCONTEXT**



Attributes: Enforced, Cascade Updates  
 RelationshipType: One-To-Many

**SUB\_GROUPtblGraveDetails**



Attributes: Unique, Enforced, Cascade Updates  
 RelationshipType: One-To-One

**Properties**

DateCreated:	18/06/2004 16:46:50	Description:	Output: Context dates after specialist assessment of finds: derived from opinion or the earliest date of the latest object
LastUpdated:	18/06/2004 16:46:50	OrderByOn:	False
RecordCount:	84	Updatable:	True

**Columns**

Name	Type	Size
EVENT_CODE	Text	50
CONTEXT	Long Integer	4
Specialism	Text	50
ContextDateMin	Long Integer	4
ContextDateMax	Long Integer	4
ContextComment	Memo	-
LastEdit	Date/Time	8
DateMeaning	Text	50

**Properties**

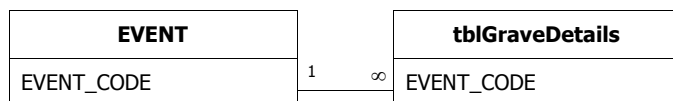
DateCreated:	07/11/2003 17:13:18	Description:	Details of graves and grave types. Applicable only to cemetary sites
LastUpdated:	07/11/2003 17:13:21	OrderByOn:	False
RecordCount:	0	Updatable:	True

**Columns**

Name	Type	Size
EVENT_CODE	Text	10
SUB_GROUP	Long Integer	4
GRAVE_DEGREES	Long Integer	4
GRAVE_ORIENTATION	Text	50
HEAD_ORIENTATION	Text	50
POT_COUNT	Long Integer	4
NAIL_COUNT	Long Integer	4

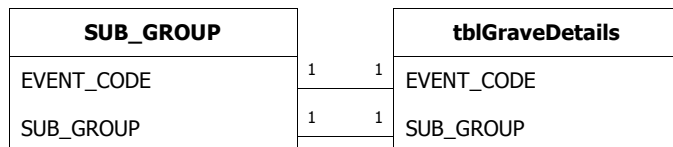
**Relationships**

**EVENTtblGraveDetails**



Attributes: Enforced, Cascade Updates  
 RelationshipType: One-To-Many

**SUB\_GROUPtblGraveDetails**



Attributes: Unique, Enforced, Cascade Updates  
 RelationshipType: One-To-One

**Properties**

DateCreated:	18/06/2004 16:46:51	Description:	Output: Typological object dates after specialist analysis
LastUpdated:	18/06/2004 16:46:51	OrderByOn:	True
RecordCount:	648	Updatable:	True

**Columns**

Name	Type	Size
ObjectKey	Text	10
EVENT_CODE	Text	50
CONTEXT	Long Integer	4
Specialism	Text	50
ObjectMaterial	Text	254
ObjectName	Text	254
ObjectDateMin	Long Integer	4
ObjectDateMax	Long Integer	4
ObjectDescription	Memo	-
ObjectCount	Long Integer	4
ObjectWeight	Long Integer	4
AnalysisLevel	Text	20
LastEdit	Date/Time	8

**Properties**

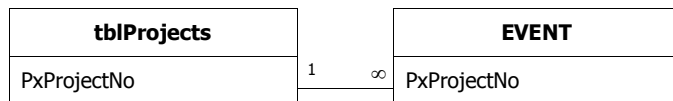
DateCreated:	07/11/2003 17:13:19	Description:	List of all event codes belonging to a CTRL PX Project. Beware ARC 330 98 which crosses more one one project. This should be null valued and is handled using the context values in nProjectChainage
LastUpdated:	07/11/2003 17:13:21	OrderByOn:	False
RecordCount:	1	Updatable:	True

**Columns**

Name	Type	Size
PxProjectNo	Long Integer	4
PxProjectName	Text	150

**Relationships**

**tblProjectsEVENT**



Attributes: Enforced, Cascade Updates  
RelationshipType: One-To-Many

**Properties**

DateCreated:	07/11/2003 17:13:20	Description:	List of recommended values for describing the interpretation of contexts
LastUpdated:	07/11/2003 17:13:20	OrderByOn:	False
RecordCount:	34	Updatable:	True

**Columns**

<u>Name</u>	<u>Type</u>	<u>Size</u>
Keyword	Text	50

**Properties**

DateCreated:	07/11/2003 17:13:20	Description:	List of permitted values for describing the type of deposit to which a context number has been assigned
LastUpdated:	07/11/2003 17:13:20	OrderByOn:	False
RecordCount:	10	Updatable:	True

**Columns**

<u>Name</u>	<u>Type</u>	<u>Size</u>
Keyword	Text	50

**Properties**

DateCreated:	07/11/2003 17:13:20	Description:	List of recommended keywords for describing the interpretation of groups of archaeological deposits or features
LastUpdated:	07/11/2003 17:13:21	OrderByOn:	False
RecordCount:	64	Updatable:	True

**Columns**

<u>Name</u>	<u>Type</u>	<u>Size</u>
GroupInterpretation	Text	50



**Properties**

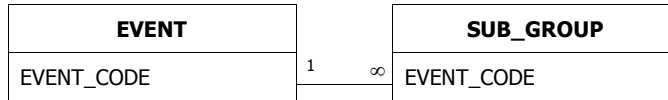
DateCreated:	07/11/2003 17:13:21	Description:	List of recommended terms for describing the interpretation of sub-groups of archaeological deposits and features
LastUpdated:	07/11/2003 17:13:21	OrderByOn:	False
RecordCount:	36	RowHeight:	540
Updatable:	True		

**Columns**

Name	Type	Size
Keyword	Text	50
ScopeNote	Text	254

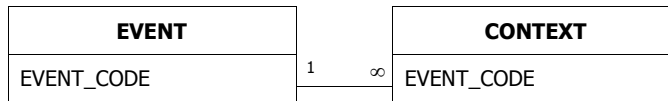
**Relationships**

**EVENTSUB\_GROUP**



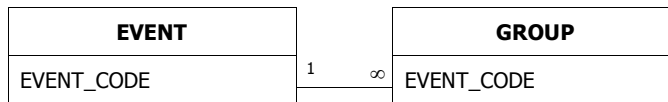
Attributes: Enforced, Cascade Updates  
RelationshipType: One-To-Many

**EVENTCONTEXT**



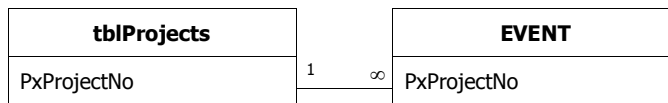
Attributes: Enforced, Cascade Updates  
RelationshipType: One-To-Many

**EVENTGROUP**



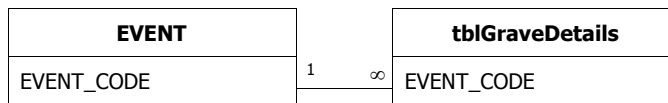
Attributes: Enforced, Cascade Updates  
RelationshipType: One-To-Many

**tblProjectsEVENT**



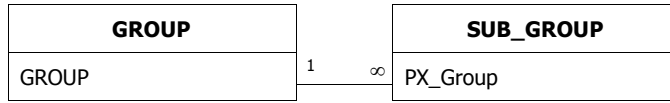
Attributes: Enforced, Cascade Updates  
RelationshipType: One-To-Many

**EVENTtblGraveDetails**



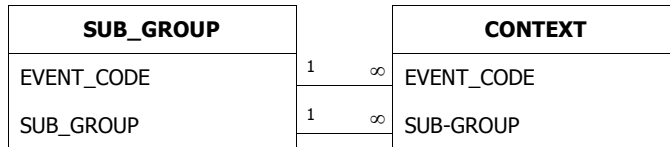
Attributes: Enforced, Cascade Updates  
RelationshipType: One-To-Many

**GROUPSUB\_GROUP**



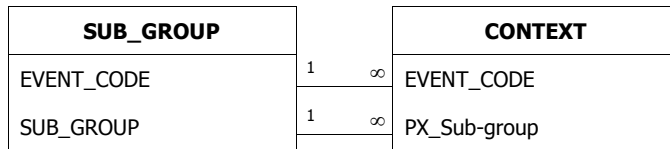
Attributes: Enforced, Cascade Updates  
 RelationshipType: One-To-Many

**SUB\_GROUPCONTEXT**



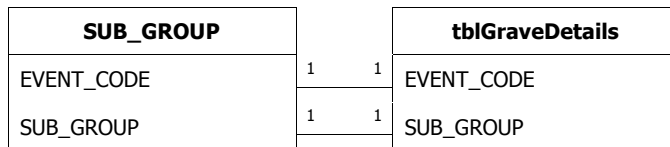
Attributes: Enforced, Cascade Updates  
 RelationshipType: One-To-Many

**SUB\_GROUPCONTEXT**



Attributes: Enforced, Cascade Updates  
 RelationshipType: One-To-Many

**SUB\_GROUPtblGraveDetails**



Attributes: Unique, Enforced, Cascade Updates  
 RelationshipType: One-To-One