

**Properties**

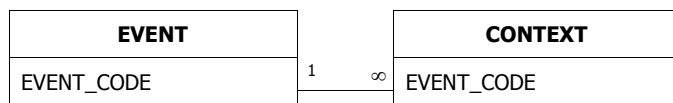
DateCreated:	18/10/2003 14:40:31	Filter:	((CONTEXT.[PX_Subgroup]=620))
LastUpdated:	22/04/2004 16:20:15	OrderBy:	CONTEXT.CONTEXT
OrderByOn:	True	RecordCount:	579
RowHeight:	360	Updatable:	True

**Columns**

Name	Type	Size
EVENT_NAME	Text	40
EVENT_CODE	Text	50
CONTEXT	Long Integer	4
TRENCH_URL	Text	10
TYPE	Text	25
FILL OF	Double	8
SUB-GROUP	Long Integer	4
INTERPRETATION	Text	50
ASSOCIATION	Text	255
PERIOD	Text	30
RES_INT	Text	10
COMMENTS	Text	100
PX_MinDate	Long Integer	4
PX_MaxDate	Long Integer	4
PX_Sub-group	Long Integer	4
PX_Rank	Integer	2

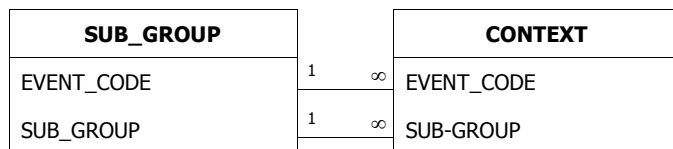
**Relationships**

**EVENTCONTEXT**



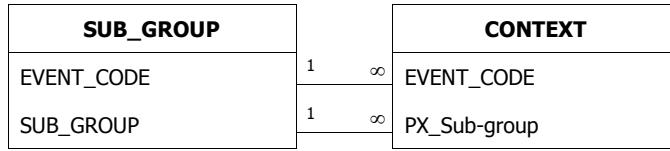
Attributes: Enforced, Cascade Updates  
 RelationshipType: One-To-Many

**SUB\_GROUPCONTEXT**



Attributes: Enforced, Cascade Updates  
 RelationshipType: One-To-Many

**SUB\_GROUPCONTEXT**



Attributes:

RelationshipType:

Enforced, Cascade Updates

One-To-Many

**Properties**

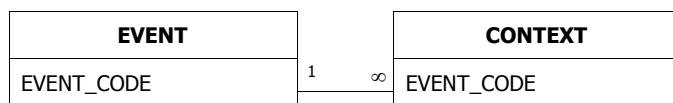
DateCreated:	18/10/2003 14:40:31	LastUpdated:	20/10/2003 16:17:05
OrderByOn:	True	RecordCount:	3
RowHeight:	780	Updatable:	True

**Columns**

Name	Type	Size
EVENT_NAME	Text	40
EVENT_CODE	Text	50
EVENT_TYPE	Text	40
CONTRACTOR	Text	60
DATE	Text	40
GRID (NGR)	Text	13
PROJECT	Text	10
COUNTY	Text	30
DISTRICT	Text	30
PARISH	Text	40
SMR	Text	100
SITE_TYPE	Text	40
PERIOD:	Text	200
METHOD:	Memo	-
PHASING:	Memo	-
ENVIRO:	Memo	-
FINDS:	Memo	-
GEOLOGY:	Memo	-
CONTEXT_NUM:	Double	8
THREAT:	Memo	-
SAMPLE:	Double	8
SUMMARY:	Memo	-
ARCHIVE:	Text	60
ACC_NUM:	Text	100
PxProjectNo	Long Integer	4

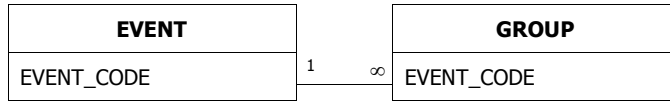
**Relationships**

**EVENTCONTEXT**



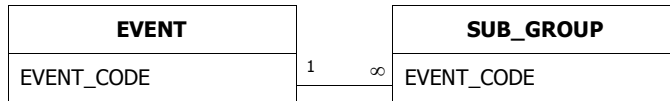
Attributes: Enforced, Cascade Updates  
 RelationshipType: One-To-Many

**EVENTGROUP**



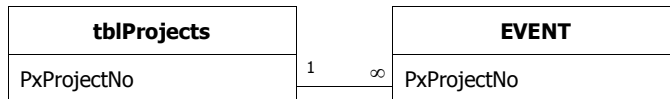
Attributes: Enforced, Cascade Updates  
RelationshipType: One-To-Many

**EVENTSUB\_GROUP**



Attributes: Enforced, Cascade Updates  
RelationshipType: One-To-Many

**tblProjectsEVENT**



Attributes: Enforced, Cascade Updates  
RelationshipType: One-To-Many

**Properties**

DateCreated: 08/04/2004 10:22:47      LastUpdated: 08/04/2004 10:22:47  
RecordCount: 120      Updatable: True

**Columns**

Name	Type	Size
Key	Text	255
Event_Code	Text	255
SourceNo	Long Integer	4
Interpreta	Text	255
Period	Text	255
PX_MinDate	Long Integer	4
PX_MaxDate	Long Integer	4
SourceComment	Memo	-
Ilevel	Text	255

**Properties**

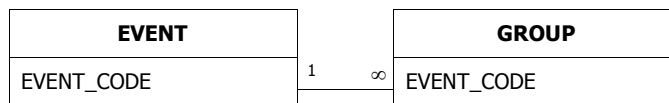
DateCreated:	18/10/2003 14:40:32	LastUpdated:	11/06/2004 10:18:04
OrderByOn:	True	RecordCount:	8
RowHeight:	1125	Updatable:	True

**Columns**

Name	Type	Size
EVENT_NAME	Text	40
TRENCH_URL	Text	10
EVENT_CODE	Text	50
GROUP	Long Integer	4
SUB_GROUPS	Memo	-
PERIOD	Text	50
INTERPRETATION	Memo	-
COMMENTS	Memo	-
PX_Interpretation	Text	50
PX_Comment	Text	254
PX_Period	Text	50
PX_MinDate	Long Integer	4
PX_MaxDate	Long Integer	4

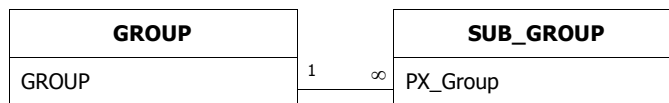
**Relationships**

**EVENTGROUP**



Attributes: Enforced, Cascade Updates  
 RelationshipType: One-To-Many

**GROUPSUB\_GROUP**



Attributes: Enforced, Cascade Updates  
 RelationshipType: One-To-Many

**Properties**

DateCreated:	07/11/2003 15:44:24	Description:	Temporary table for processing memo field comments for attaching to qryOutputPX
LastUpdated:	07/11/2003 15:44:24	OrderByOn:	False
RecordCount:	660	Updatable:	True

**Columns**

Name	Type	Size
EVENT_CODE	Text	50
SourceNumber	Long Integer	4
Ilevel	Text	50
SourceComment	Memo	-
PX_MinDate	Long Integer	4
PX_MaxDate	Long Integer	4

**Properties**

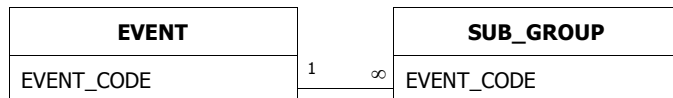
DatasheetFontHeight:	10	DatasheetFontItalic:	False
DatasheetFontName:	Arial	DatasheetFontUnderline:	False
DatasheetFontWeight:	Normal	DatasheetForeColor:	33554432
DateCreated:	18/10/2003 14:40:32	Filter:	((SUB_GROUP.PX_Group=40006))
LastUpdated:	08/06/2004 16:29:58	OrderByOn:	False
RecordCount:	82	RowHeight:	1995
TabularCharSet:	0	TabularFamily:	34
Updatable:	True		

**Columns**

Name	Type	Size
EVENT_CODE	Text	50
SUB_GROUP	Long Integer	4
CONTEXTS	Memo	-
PERIOD	Text	50
INTERPRETATION	Text	50
COMMENTS	Memo	-
PART OF GROUP	Long Integer	4
PHASE	Long Integer	4
PX_Group	Long Integer	4
PX_Interpretation	Text	50
PX_Comment	Memo	-
PX_MinDate	Long Integer	4
PX_MaxDate	Long Integer	4

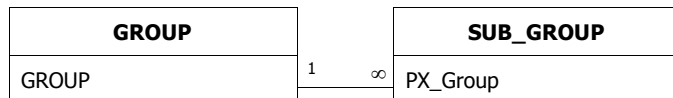
**Relationships**

**EVENTSUB\_GROUP**



Attributes: Enforced, Cascade Updates  
 RelationshipType: One-To-Many

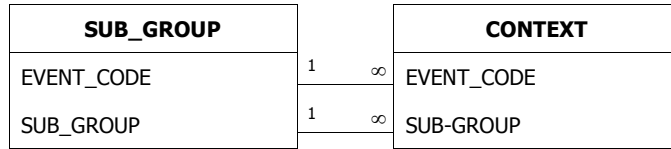
**GROUPSUB\_GROUP**



Attributes: Enforced, Cascade Updates  
 RelationshipType: One-To-Many

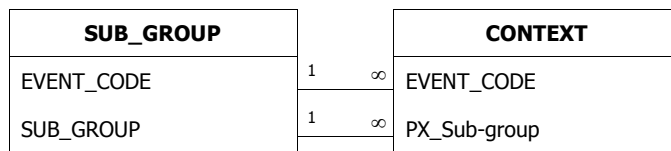


**SUB\_GROUPCONTEXT**



Attributes: Enforced, Cascade Updates  
RelationshipType: One-To-Many

**SUB\_GROUPCONTEXT**



Attributes: Enforced, Cascade Updates  
RelationshipType: One-To-Many

**Properties**

DateCreated:	11/02/2004 16:45:29	Description:	Output: Context dates after specialist assessment of finds: derived from opinion or the earliest date of the latest object
LastUpdated:	11/02/2004 16:45:53	OrderByOn:	False
RecordCount:	199	Updatable:	True

**Columns**

Name	Type	Size
EVENT_CODE	Text	50
CONTEXT	Long Integer	4
Specialism	Text	50
ContextDateMin	Long Integer	4
ContextDateMax	Long Integer	4
ContextComment	Memo	-
LastEdit	Date/Time	8
DateMeaning	Text	50

**Properties**

DateCreated:	18/10/2003 14:47:38	LastUpdated:	18/10/2003 14:47:38
OrderByOn:	True	RecordCount:	77
Updatable:	True		

**Columns**

<u>Name</u>	<u>Type</u>	<u>Size</u>
EVENT_NAME	Text	75
EVENT_CODE	Text	24
EVENT_TYPE	Text	40
CONTRACTOR	Text	60
DATE	Text	40

**Properties**

DateCreated:	11/02/2004 16:46:47	Description:	Output: Typological object dates after specialist analysis
Filter:	((tblObjectDates.CONTEXT=25 0))	LastUpdated:	16/02/2004 16:56:35
OrderBy:	tblObjectDates.CONTEXT	OrderByOn:	True
RecordCount:	1884	Updatable:	True

**Columns**

Name	Type	Size
ObjectKey	Text	10
EVENT_CODE	Text	50
CONTEXT	Long Integer	4
Specialism	Text	50
ObjectMaterial	Text	254
ObjectName	Text	254
ObjectDateMin	Long Integer	4
ObjectDateMax	Long Integer	4
ObjectDescription	Memo	-
ObjectCount	Long Integer	4
ObjectWeight	Long Integer	4
AnalysisLevel	Text	20
LastEdit	Date/Time	8

**Properties**

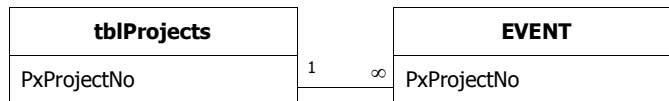
DateCreated: 18/10/2003 14:42:32      LastUpdated: 18/10/2003 14:52:39  
OrderByOn: False      RecordCount: 1  
Updatable: True

**Columns**

Name	Type	Size
PxProjectNo	Long Integer	4
PxProjectName	Text	150

**Relationships**

**tblProjectsEVENT**



Attributes: Enforced, Cascade Updates  
RelationshipType: One-To-Many

**Properties**

DateCreated:	18/10/2003 14:51:21	LastUpdated:	20/10/2003 12:23:33
OrderByOn:	False	RecordCount:	34
Updatable:	True		

**Columns**

<u>Name</u>	<u>Type</u>	<u>Size</u>
Keyword	Text	50

**Properties**

DateCreated:	18/10/2003 14:51:21	LastUpdated:	20/10/2003 12:27:50
OrderByOn:	False	RecordCount:	10
Updatable:	True		

**Columns**

<u>Name</u>	<u>Type</u>	<u>Size</u>
Keyword	Text	50

**Properties**

DateCreated:	18/10/2003 14:51:21	Description:	Permitted terms for describing the phasing or dating of archaeological deposits and features
LastUpdated:	29/10/2003 10:44:33	OrderBy:	tlkpPeriods.GroupPeriod
OrderByOn:	True	RecordCount:	32
RowHeight:	270	Updatable:	True

**Columns**

Name	Type	Size
PX_Period	Text	50
Date_Min	Long Integer	4
Date_Max	Long Integer	4
GroupPeriod	Long Integer	4



**Properties**

DateCreated:	18/10/2003 14:51:21	LastUpdated:	29/10/2003 09:37:18
OrderByOn:	False	RecordCount:	36
RowHeight:	540	Updatable:	True

**Columns**

<u>Name</u>	<u>Type</u>	<u>Size</u>
Keyword	Text	50
ScopeNote	Text	254

**Properties**

DateCreated: 30/09/2005 12:15:05 LastUpdated: 30/09/2005 12:15:05  
RecordCount: 9 Updatable: True

**Columns**

Name	Type	Size
RecordID	Text	255
EVENT_CODE	Text	255
CONTEXT	Double	8
WorkStage	Text	255
SF_Number	Double	8
ObjectIdentification	Text	255
Material	Text	255
Material2	Text	255
NoOfObjects	Double	8
Weight	Text	255
Function	Text	255
Typology	Text	255
Condition	Text	255
Completeness	Text	255
ObjectDescription	Text	255
Length	Text	255
Width	Text	255
Thickness	Text	255
Diameter	Text	255
X-RayNo	Text	255
PhotoNo	Text	255
ConservationNo	Text	255
DoIllustrate	Text	255
DoPhotograph	Text	255
SampleNo	Text	255
Specialist	Text	255
Min_Date	Double	8
Max_Date	Double	8
Timestamp	Date/Time	8
LastEdit	Date/Time	8
UserName	Text	255

**Properties**

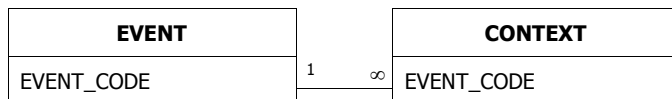
DateCreated: 26/09/2005 14:47:44 LastUpdated: 26/09/2005 14:47:44  
RecordCount: 7 Updatable: True

**Columns**

Name	Type	Size
RecordID	Text	255
idiot	Text	255
EVENT_CODE	Text	255
CONTEXT	Double	8
SF_Number	Double	8
ObjectIdentification	Text	255
Material	Text	255
Material2	Text	255
NoOfObjects	Double	8
Weight	Text	255
Function	Text	255
Typology	Text	255
Condition	Text	255
Completeness	Text	255
ObjectDescription	Text	255
Length	Text	255
Width	Text	255
Thickness	Text	255
Diameter	Text	255
X-RayNo	Text	255
PhotoNo	Text	255
ConservationNo	Text	255
DoIllustrate	Text	255
DoPhotograph	Text	255
SampleNo	Text	255
Specialist	Text	255
Min_Date	Double	8
Max_Date	Double	8
Timestamp	Date/Time	8
LastEdit	Date/Time	8
UserName	Text	255

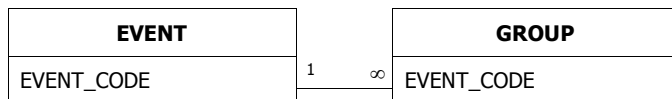
**Relationships**

**EVENTCONTEXT**



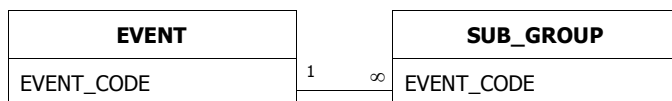
Attributes: Enforced, Cascade Updates  
 RelationshipType: One-To-Many

**EVENTGROUP**



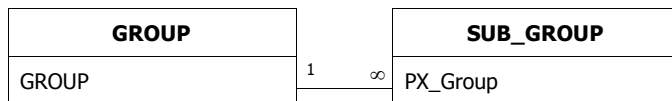
Attributes: Enforced, Cascade Updates  
 RelationshipType: One-To-Many

**EVENTSUB\_GROUP**



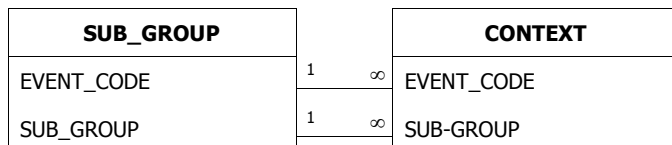
Attributes: Enforced, Cascade Updates  
 RelationshipType: One-To-Many

**GROUPSUB\_GROUP**



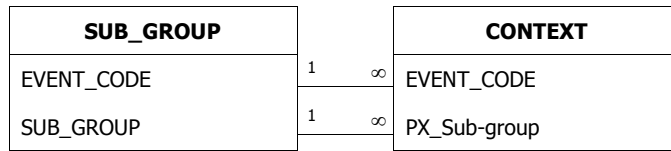
Attributes: Enforced, Cascade Updates  
 RelationshipType: One-To-Many

**SUB\_GROUPCONTEXT**



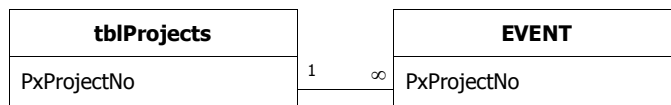
Attributes: Enforced, Cascade Updates  
 RelationshipType: One-To-Many

**SUB\_GROUPCONTEXT**



Attributes: Enforced, Cascade Updates  
RelationshipType: One-To-Many

**tblProjectsEVENT**



Attributes: Enforced, Cascade Updates  
RelationshipType: One-To-Many