

Properties

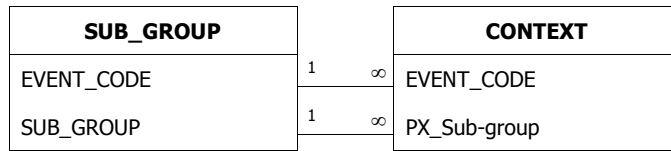
DateCreated:	14/07/2004 09:51:31	Description:	Archaeological deposits and features described at the context level
Filter:	((CONTEXT.[PX_Sub-group]=701))	LastUpdated:	19/01/2006 11:11:02
OrderBy:	CONTEXT.EVENT_CODE, CONTEXT.CONTEXT, CONTEXT.TRENCH_URL, CONTEXT.TYPE, CONTEXT.[FILL OF], CONTEXT.[SUB-GROUP], CONTEXT.INTERPRETATION, CONTEXT.ASSOCIATION, CONTEXT.PERIOD, CONTEXT.RES_INT, CONTEXT.COMMENTS, CONTEXT.[PX_Sub-group], CONTEXT.PX_Rank, CONTEXT.PX_MinDate, CONTEXT.PX_MaxDate	OrderByOn:	True
RecordCount:	644	Updatable:	True

Columns

Name	Type	Size
EVENT_CODE	Text	50
CONTEXT	Long Integer	4
TRENCH_URL	Text	10
TYPE	Text	25
FILL OF	Long Integer	4
SUB-GROUP	Long Integer	4
INTERPRETATION	Text	50
ASSOCIATION	Text	255
PERIOD	Text	30
RES_INT	Text	10
COMMENTS	Text	254
PX_Sub-group	Long Integer	4
PX_Rank	Integer	2
PX_MinDate	Long Integer	4
PX_MaxDate	Long Integer	4

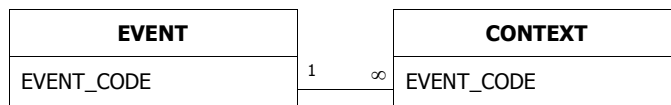
Relationships

SUB_GROUPCONTEXT



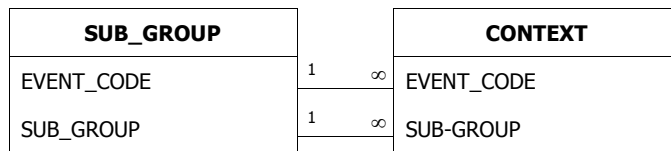
Attributes: Enforced, Cascade Updates
RelationshipType: One-To-Many

EVENTCONTEXT



Attributes: Enforced, Cascade Updates
RelationshipType: One-To-Many

SUB_GROUPCONTEXT



Attributes: Enforced, Cascade Updates
RelationshipType: One-To-Many

Properties

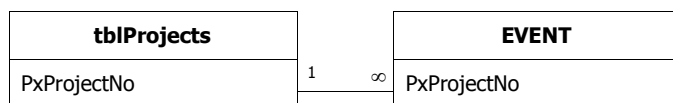
DateCreated:	14/07/2004 09:51:54	Description:	List of individual fieldwork projects producing contexts that exist in this database
LastUpdated:	14/07/2004 09:53:51	OrderByOn:	True
RecordCount:	3	RowHeight:	1185
Updatable:	True		

Columns

Name	Type	Size
tmpEvent	Text	255
EVENT_NAME	Text	40
EVENT_CODE	Text	50
EVENT_TYPE	Text	40
CONTRACTOR	Text	60
DATE	Text	40
GRID (NGR)	Text	13
PROJECT	Text	10
COUNTY	Text	30
DISTRICT	Text	30
PARISH	Text	40
SMR	Text	100
SITE_TYPE	Memo	-
PERIOD:	Text	200
METHOD:	Memo	-
PHASING:	Memo	-
ENVIRO:	Memo	-
FINDS:	Memo	-
GEOLOGY:	Memo	-
CONTEXT_NUM:	Double	8
THREAT:	Memo	-
SAMPLE:	Double	8
SUMMARY:	Memo	-
ARCHIVE:	Memo	-
ACC_NUM:	Text	100
PxProjectNo	Long Integer	4

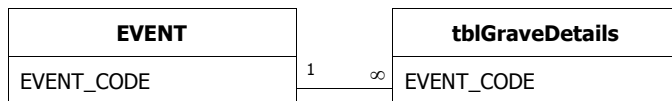
Relationships

tblProjectsEVENT



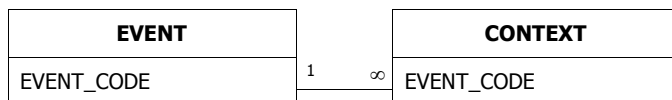
Attributes: Enforced, Cascade Updates
 RelationshipType: One-To-Many

EVENTtblGraveDetails



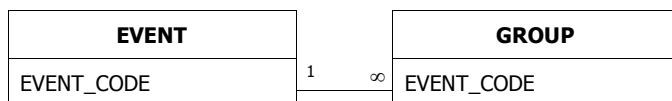
Attributes: Enforced, Cascade Updates
RelationshipType: One-To-Many

EVENTCONTEXT



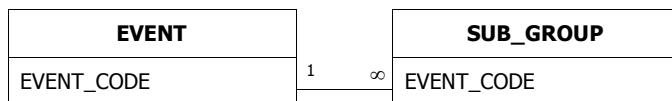
Attributes: Enforced, Cascade Updates
RelationshipType: One-To-Many

EVENTGROUP



Attributes: Enforced, Cascade Updates
RelationshipType: One-To-Many

EVENTSUB_GROUP



Attributes: Enforced, Cascade Updates
RelationshipType: One-To-Many

Properties

DateCreated:	14/07/2004 09:57:34	LastUpdated:	19/01/2006 11:27:52
OrderBy:	GISFinal.SourceNo	OrderByOn:	True
RecordCount:	137	Updatable:	True

Columns

Name	Type	Size
Key	Text	255
EventCode	Text	50
SourceNo	Long Integer	4
Interpreta	Text	255
Period	Text	255
PX_MinDate	Long Integer	4
PX_MaxDate	Long Integer	4
SourceComment	Memo	-
Ilevel	Text	255

Properties

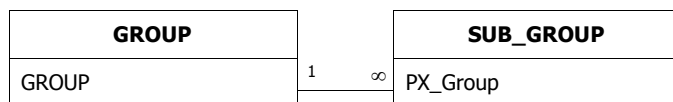
DateCreated:	14/07/2004 09:52:03	Description:	Archaeological deposits and features described at the group level consisting of one or more sub-groups
Filter:	((GROUP.SUB_GROUPS="Grou p dead"))	LastUpdated:	26/07/2005 10:31:53
OrderByOn:	True	RecordCount:	52
RowHeight:	3105	Updatable:	True

Columns

Name	Type	Size
EVENT_CODE	Text	50
GROUP	Long Integer	4
SUB_GROUPS	Memo	-
PERIOD	Text	50
INTERPRETATION	Text	100
COMMENTS	Memo	-
PX_Interpretation	Text	100
PX_Comment	Memo	-
PX_MinDate	Long Integer	4
PX_MaxDate	Long Integer	4
OldGroup	Long Integer	4

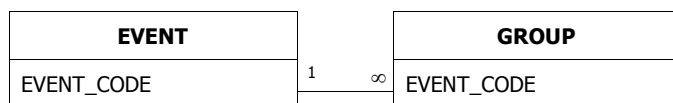
Relationships

GROUPSUB_GROUP



Attributes: Enforced, Cascade Updates
 RelationshipType: One-To-Many

EVENTGROUP



Attributes: Enforced, Cascade Updates
 RelationshipType: One-To-Many

Properties

DateCreated:	14/07/2004 09:57:34	Description:	Temporary table for processing memo field comments for attaching to qryOutputPX
LastUpdated:	14/07/2004 09:57:34	OrderByOn:	False
RecordCount:	839	Updatable:	True

Columns

Name	Type	Size
EVENT_CODE	Text	50
SourceNumber	Long Integer	4
Ilevel	Text	50
SourceComment	Memo	-
PX_MinDate	Long Integer	4
PX_MaxDate	Long Integer	4

Properties

DateCreated: 14/07/2004 09:52:48 Description: Archaeological deposits and features described at the sub-group level consisting of one or more sub-groups

Filter: ((SUB_GROUP.PX_Group=4520)) LastUpdated: 19/01/2006 11:11:05

OrderBy: SUB_GROUP.SUB_GROUP OrderByOn: True

RecordCount: 195 RowHeight: 2280

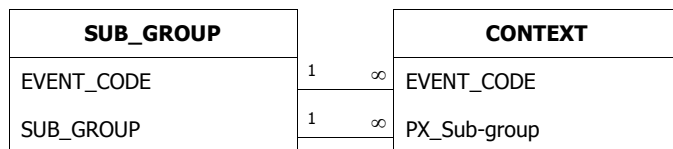
Updatable: True

Columns

Name	Type	Size
EVENT_CODE	Text	50
SUB_GROUP	Long Integer	4
CONTEXTS	Memo	-
PERIOD	Text	50
INTERPRETATION	Text	50
COMMENTS	Memo	-
PART OF GROUP	Long Integer	4
PHASE	Long Integer	4
PX_Group	Long Integer	4
PX_Interpretation	Text	50
PX_Comment	Memo	-
PX_MinDate	Long Integer	4
PX_MaxDate	Long Integer	4

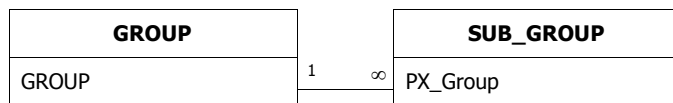
Relationships

SUB_GROUPCONTEXT



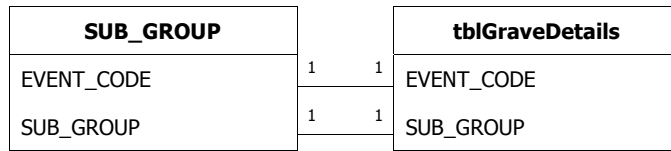
Attributes: Enforced, Cascade Updates
 RelationshipType: One-To-Many

GROUPSUB_GROUP



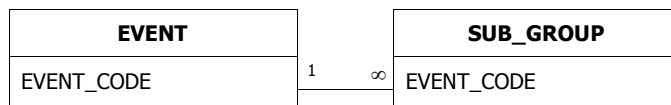
Attributes: Enforced, Cascade Updates
 RelationshipType: One-To-Many

SUB_GROUPtblGraveDetails



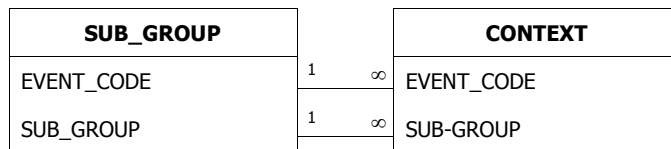
Attributes: Unique, Enforced, Cascade Updates
 RelationshipType: One-To-One

EVENTSUB_GROUP



Attributes: Enforced, Cascade Updates
 RelationshipType: One-To-Many

SUB_GROUPCONTEXT



Attributes: Enforced, Cascade Updates
 RelationshipType: One-To-Many

Properties

DateCreated:	14/07/2004 09:57:34	Description:	Output: Context dates after specialist assessment of finds: derived from opinion or the earliest date of the latest object
LastUpdated:	14/07/2004 09:57:35	OrderByOn:	False
RecordCount:	49	Updatable:	True

Columns

Name	Type	Size
EVENT_CODE	Text	50
CONTEXT	Long Integer	4
Specialism	Text	50
ContextDateMin	Long Integer	4
ContextDateMax	Long Integer	4
ContextComment	Memo	-
LastEdit	Date/Time	8
DateMeaning	Text	50

Properties

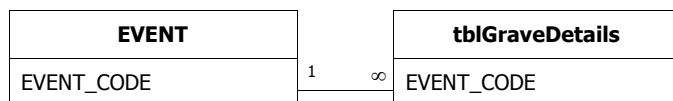
DateCreated:	14/07/2004 09:53:06	Description:	Details of graves and grave types. Applicable only to cemetary sites
LastUpdated:	14/07/2004 09:54:06	OrderByOn:	False
RecordCount:	0	Updatable:	True

Columns

Name	Type	Size
EVENT_CODE	Text	10
SUB_GROUP	Long Integer	4
GRAVE_DEGREES	Long Integer	4
GRAVE_ORIENTATION	Text	50
HEAD_ORIENTATION	Text	50
POT_COUNT	Long Integer	4
NAIL_COUNT	Long Integer	4

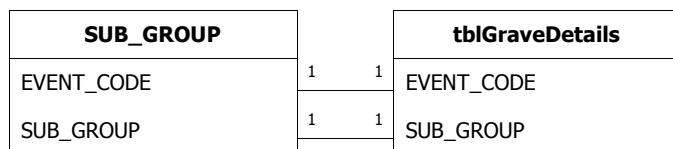
Relationships

EVENTtblGraveDetails



Attributes: Enforced, Cascade Updates
 RelationshipType: One-To-Many

SUB_GROUPtblGraveDetails



Attributes: Unique, Enforced, Cascade Updates
 RelationshipType: One-To-One

Properties

DateCreated:	14/07/2004 09:57:35	Description:	Output: Typological object dates after specialist analysis
LastUpdated:	14/07/2004 10:04:15	OrderByOn:	True
RecordCount:	142	Updatable:	True

Columns

Name	Type	Size
ObjectKey	Text	10
EVENT_CODE	Text	50
CONTEXT	Long Integer	4
SFNumber	Long Integer	4
Specialism	Text	50
ObjectMaterial	Text	254
ObjectName	Text	254
ObjectDateMin	Long Integer	4
ObjectDateMax	Long Integer	4
ObjectDescription	Memo	-
ObjectCount	Long Integer	4
ObjectWeight	Long Integer	4
AnalysisLevel	Text	20
LastEdit	Date/Time	8

Properties

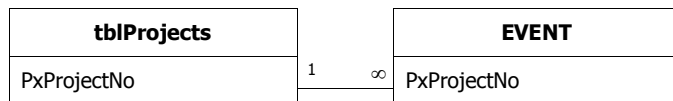
DateCreated:	14/07/2004 09:53:11	Description:	List of all event codes belonging to a CTRL PX Project. Beware ARC 330 98 which crosses more one one project. This should be null valued and is handled using the context values in nProjectChainage
LastUpdated:	14/07/2004 09:53:48	OrderByOn:	False
RecordCount:	1	Updatable:	True

Columns

Name	Type	Size
PxProjectNo	Long Integer	4
PxProjectName	Text	150

Relationships

tblProjectsEVENT



Attributes: Enforced, Cascade Updates
RelationshipType: One-To-Many

Properties

DateCreated:	14/07/2004 09:53:16	Description:	List of recommended values for describing the interpretation of contexts
LastUpdated:	14/07/2004 09:53:21	OrderByOn:	False
RecordCount:	34	Updatable:	True

Columns

<u>Name</u>	<u>Type</u>	<u>Size</u>
Keyword	Text	50

Properties

DateCreated:	14/07/2004 09:53:21	Description:	List of permitted values for describing the type of deposit to which a context umber has been assigned
LastUpdated:	14/07/2004 09:53:26	OrderByOn:	False
RecordCount:	10	Updatable:	True

Columns

<u>Name</u>	<u>Type</u>	<u>Size</u>
Keyword	Text	50

Properties

DateCreated:	14/07/2004 09:53:26	Description:	List of recommended keywords for describing the interpretation of groups of archaeological deposits or features
LastUpdated:	14/07/2004 09:53:31	OrderByOn:	False
RecordCount:	64	Updatable:	True

Columns

<u>Name</u>	<u>Type</u>	<u>Size</u>
GroupInterpretation	Text	50

Properties

DateCreated:	14/07/2004 09:53:31	Description:	List of recommended terms for describing the interpretation of sub-groups of archaeological deposits and features
LastUpdated:	14/07/2004 09:53:36	OrderByOn:	False
RecordCount:	36	RowHeight:	540
Updatable:	True		

Columns

Name	Type	Size
Keyword	Text	50
ScopeNote	Text	254

Properties

DateCreated:	27/10/2005 11:53:30	Filter:	((ValtblSherds.[Site Code]="ARC WSG 99"))
LastUpdated:	27/10/2005 12:02:53	OrderBy:	ValtblSherds.[Context Number]
OrderByOn:	True	RecordCount:	185
Updatable:	True		

Columns

Name	Type	Size
BagID	Text	255
Site Code	Text	255
Context Number	Double	8
Specialism	Text	255
Fabric Group	Text	255
Fabric Type	Text	255
Component Part	Text	255
Component Type	Double	8
Vessel Form	Text	255
Vessel Type	Text	255
VesselForm2	Text	255
Sherd Count	Double	8
Weight	Double	8
Rim Diameter Min	Text	255
Rim % Max	Text	255
Surface Treatment	Text	255
Manufacture	Text	255
Residue	Text	255
ResiduePosition	Text	255
Repair	Text	255
Perforation	Text	255
Illustration	Yes/No	1
Condition	Text	255
Comments	Text	255
Decoration	Text	255
EVE	Text	255
Min_Date	Double	8
Max_Date	Double	8
Timestamp	Date/Time	8
LastEdit	Date/Time	8
UserName	Text	255

Properties

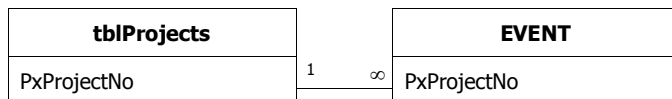
DateCreated:	18/10/2005 15:33:08	Description:	Descriptions to objects identified by specialists who deal with objects that are small finds
LastUpdated:	18/10/2005 15:33:14	OrderByOn:	False
RecordCount:	11	Updatable:	True

Columns

Name	Type	Size
RecordID	Text	10
EVENT_CODE	Text	24
CONTEXT	Long Integer	4
WorkStage	Text	10
SF_Number	Long Integer	4
ObjectIdentification	Text	50
Material	Text	50
Material2	Text	50
NoOfObjects	Long Integer	4
Weight	Long Integer	4
Function	Text	50
Typology	Text	50
Condition	Text	10
Completeness	Text	50
ObjectDescription	Memo	-
Length	Single	4
Width	Single	4
Thickness	Single	4
Diameter	Single	4
X-RayNo	Text	50
PhotoNo	Text	50
ConservationNo	Text	50
DoIllustrate	Text	3
DoPhotograph	Text	3
SampleNo	Long Integer	4
Specialist	Text	50
Min_Date	Long Integer	4
Max_Date	Long Integer	4
Timestamp	Date/Time	8
LastEdit	Date/Time	8
UserName	Text	255

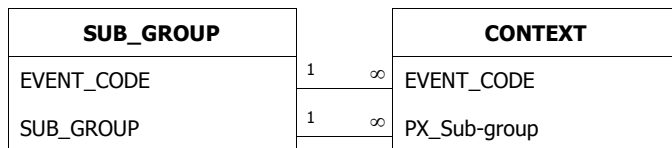
Relationships

tblProjectsEVENT



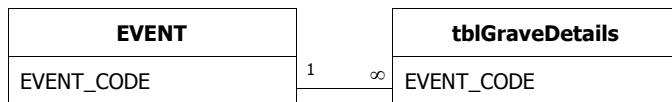
Attributes: Enforced, Cascade Updates
RelationshipType: One-To-Many

SUB_GROUPCONTEXT



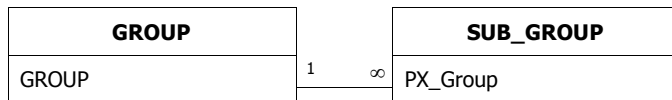
Attributes: Enforced, Cascade Updates
RelationshipType: One-To-Many

EVENTtblGraveDetails



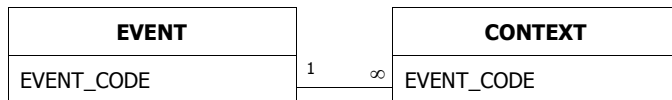
Attributes: Enforced, Cascade Updates
RelationshipType: One-To-Many

GROUPSUB_GROUP



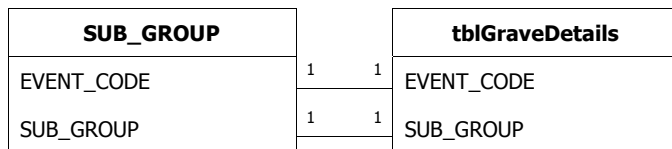
Attributes: Enforced, Cascade Updates
RelationshipType: One-To-Many

EVENTCONTEXT



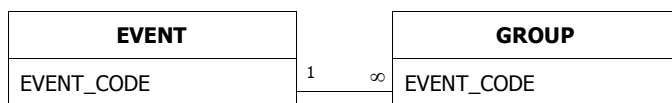
Attributes: Enforced, Cascade Updates
RelationshipType: One-To-Many

SUB_GROUPtblGraveDetails



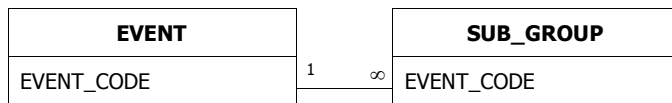
Attributes: Unique, Enforced, Cascade Updates
 RelationshipType: One-To-One

EVENTGROUP



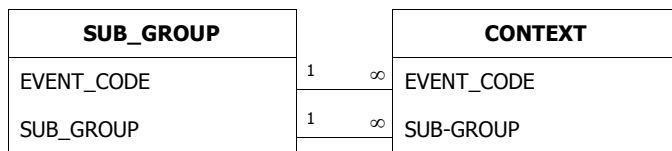
Attributes: Enforced, Cascade Updates
 RelationshipType: One-To-Many

EVENTSUB_GROUP



Attributes: Enforced, Cascade Updates
 RelationshipType: One-To-Many

SUB_GROUPCONTEXT



Attributes: Enforced, Cascade Updates
 RelationshipType: One-To-Many