

**Channel Tunnel Rail Link
Union Railways (South) Limited**

Project 440

**Archaeological Investigations at Saltwood Tunnel,
Near Folkestone, Kent**

**ARC SLT98
ARC SLT98C
ARC SLT99
ARC SFB99**

**DETAILED ARCHAEOLOGICAL WORKS
ASSESSMENT REPORT**

Volume 2 of 3: Illustrations

Contract no. S/400/SP/0009/P484A

Contract no. URS/400/ARC/0001

Jointly prepared by:

**Canterbury Archaeological Trust
92a Broad Street
Canterbury
Kent
CT1 2LU**

**Wessex Archaeology
Portway House
Old Sarum Park
Salisbury
Wiltshire
SP4 6EB**

18th March 2002

**Channel Tunnel Rail Link
Union Railways (South) Limited**

Project 440

**Archaeological Investigations at Saltwood Tunnel,
Near Folkestone, Kent**

**ARC SLT98
ARC SLT98C
ARC SLT99
ARC SFB99**

**DETAILED ARCHAEOLOGICAL WORKS
ASSESSMENT REPORT**

Volume 2 of 3: Illustrations

Canterbury Archaeological Trust 92a Broad Street Canterbury Kent CT1 2LU	Wessex Archaeology Portway House Old Sarum Park Salisbury Wiltshire SP4 6EB
Contract no. S/400/SP/0009/P484A	Contract no. URS/400/ARC/0001
Prepared By: Date:	Prepared By: Date:
Checked by: Date:	Checked by: Date:
Approved by: Position: Date:	Approved by: Position: Date:

18th March 2002

Contents

Figure 1: Site location plan1

Figure 2: Fieldwork Event zones at Saltwood Tunnel.....2

Figure 3: All archaeological remains by phase3

Figure 4: Early Neolithic to Mid Bronze Age remains (Inset showing distribution
of SMR recorded Neolithic remains in Kent)3

Figure 5: Late Bronze Age to Mid Iron Age remains.....4

Figure 6: Late Iron Age to Late ("Sub") Roman remains.....4

Figure 7: Early Saxon remains.....5

Figure 8: Detail of late 5th to mid/ late 6th century eastern cemetery5

Figure 9: Detail of mid 6th to early/ mid 7th century western cemetery5

Figure 10: Detail of 7th century central cemetery5

Figure 11: Early medieval remains6

Figure 12: Post-medieval and modern remains6

Plate 1: 6th century Anglo-Saxon ring sword.....7

Plate 2: Mid to Late 6th century Anglo-Saxon radiate-headed brooch7

Plate 3: Late 6th to early 7th century Anglo-Saxon composite disc brooch.....7

Plate 4: Late 6th to 7th century Anglo-Saxon type B1 ‘Coptic’ bowl.....7

Plate 5: X-radiograph showing repair to Anglo-Saxon type B1 ‘Coptic’ bowl7

Plate 6: Excavation of early medieval articulated dog skeleton7

Figure 1: Site location plan

Figure 2: Fieldwork Event zones at Saltwood Tunnel

Figure 3: All archaeological remains by phase

Figure 4: Early Neolithic to Mid Bronze Age remains (Inset showing distribution of SMR recorded Neolithic remains in Kent)

Figure 5: Late Bronze Age to Mid Iron Age remains

Figure 6: Late Iron Age to Late ("Sub") Roman remains

Figure 7: Early Saxon remains

Figure 8: Detail of late 5th to mid/ late 6th century eastern cemetery

Figure 9: Detail of mid 6th to early/ mid 7th century western cemetery

Figure 10: Detail of 7th century central cemetery

Figure 11: Early medieval remains

Figure 12: Post-medieval and modern remains

Plate 1: 6th century Anglo-Saxon ring sword

Plate 2: Mid to Late 6th century Anglo-Saxon radiate-headed brooch

Plate 3: Late 6th to early 7th century Anglo-Saxon composite disc brooch

Plate 4: Late 6th to 7th century Anglo-Saxon type B1 ‘Coptic’ bowl

Plate 5: X-radiograph showing repair to Anglo-Saxon type B1 ‘Coptic’ bowl

Plate 6: Excavation of early medieval articulated dog skeleton



Scale 1:50,000

© UNION RAILWAYS (SOUTH) LIMITED, 2002

Reproduced from the Ordnance Survey's 1:50 000 map of 1988 with the permission of the Controller of Her Majesty's Stationary Office, © Crown Copyright Wessex Archaeology, Salisbury (AL 18030A)

Figure 1: Site location



Figure 3: All archaeological remains by phase



Figure 4: Neolithic and Bronze Age remains (insert showing distribution of SMR recorded Neolithic remains in Kent)



Figure 5: Late Bronze Age and Iron Age



Figure 6: Late Iron Age and Romano-British remains



Figure 7: Anglo-Saxon remains



Figure 9: Detail of mid 6th to early/mid 7th century western cemetery

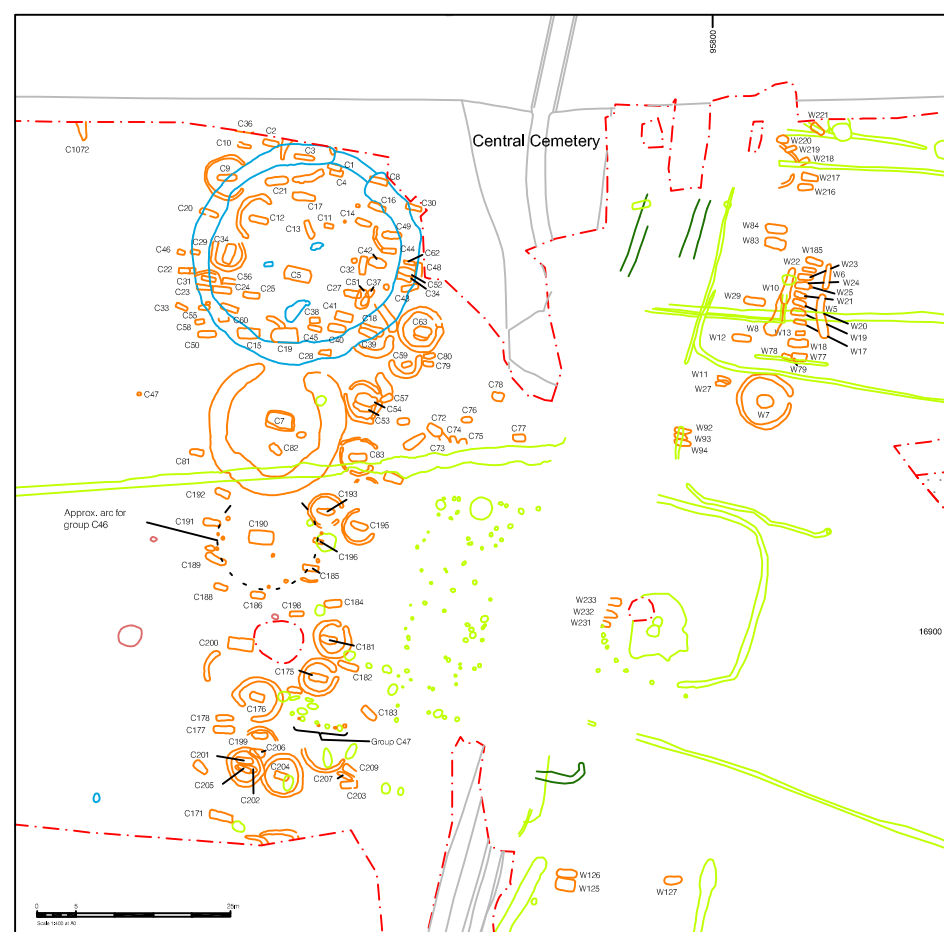


Figure 10: Detail of 7th century central cemetery

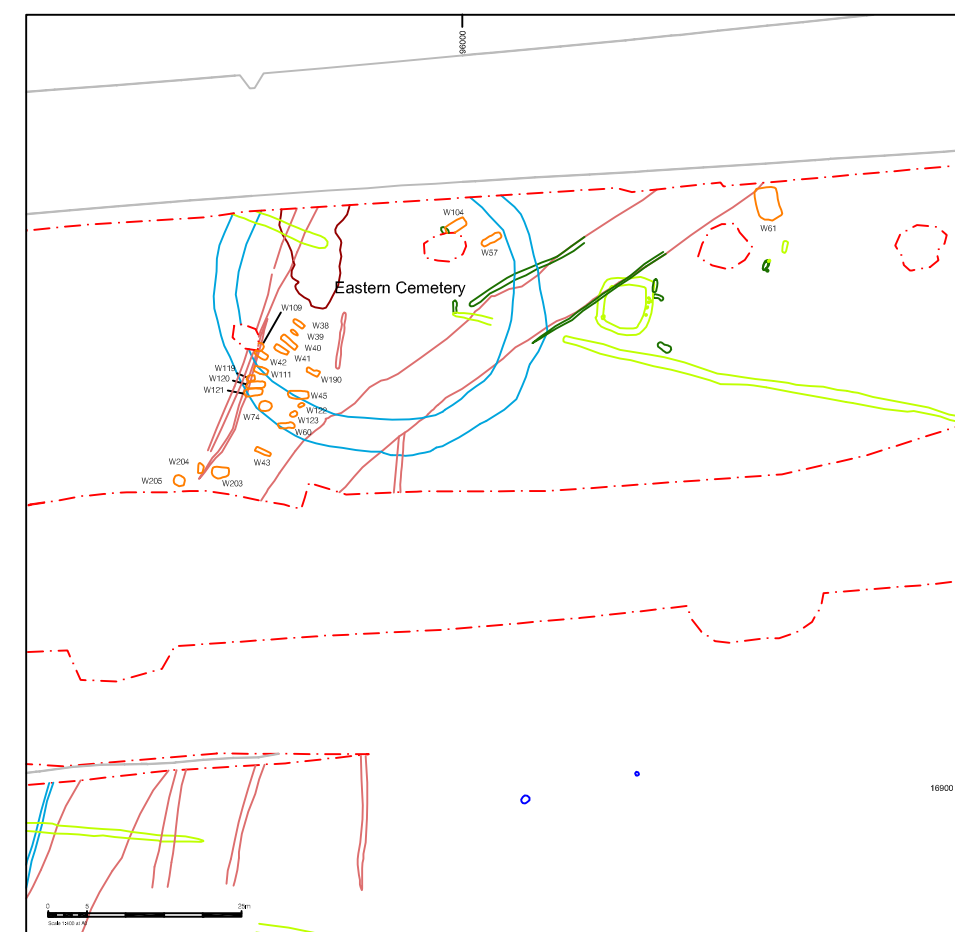


Figure 8: Detail of late 5th to mid/late 6th century eastern cemetery



Figure 11: Medieval remains

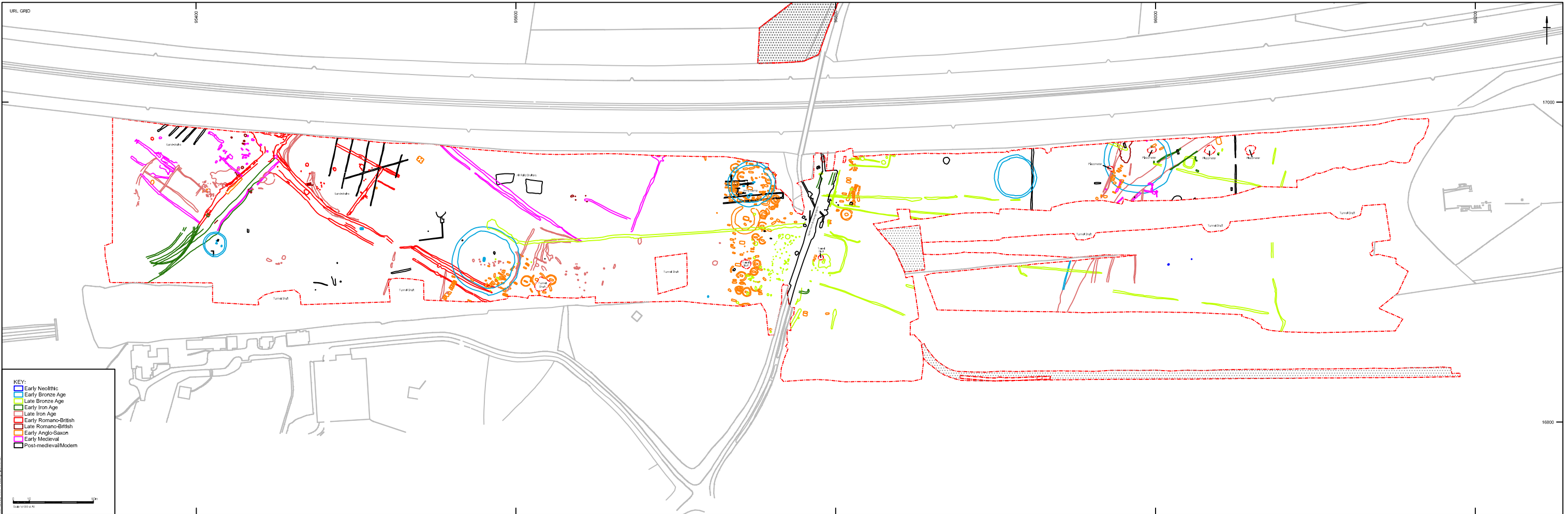


Figure 12: Post-medieval and modern remains



Plate 1: 6th century Anglo-Saxon ring sword



Plate 2: Mid to late 6th century Anglo-Saxon radiate-headed brooch



Plate 3: Late 6th to early 7th century Anglo-Saxon composite disc brooch



Plate 4: Late 6th to 7th century Anglo-Saxon type B1 'Coptic' bowl



Plate 5: X-radiograph showing repair to Anglo-Saxon type B1 'Coptic' bowl



Plate 6: Excavation of early medieval articulated dog skeleton