

FIG. 4.73 Plan, section, grave goods and jar (7) from urned cremation burial 73; plan to left shows capping stones in place.

76 1967/91 PHASE 1

Plan FIG. 4.2; details FIG. 4.76.

Description No detailed description extant. Oval pit (0.94 x 0.67m, 0.18m deep). Probably disturbed by machine.

Cremated human bone One group from two

individuals from jar (8).

(i) Infant-juvenile (3-7 years); unsexed.

(ii) Adult (30-40 years); female. Wt. 651.6g (including 5.6g animal bone and 33.6g worked bone).

Cremated animal bone Large ungulate, small ungulate.

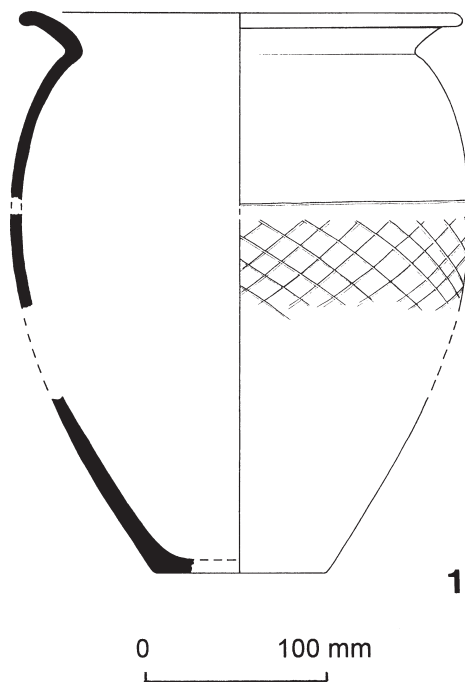


FIG. 4.74 Urn from urned cremation burial 74.

Pyre goods

- 1* Composite; bell-shaped stud. Allason-Jones (1985) type 1, stud copper alloy with iron shank. Distorted by heat. Diameter 25mm.
- 2 Copper alloy; fragments (6) distorted through heat and one melted on bone.
- 3 Iron; hobnail.
- 4 Iron; nails six fragments found in cremated bone and cinerary urn.
- 5 Bone veneer types: A1; A2; A4.1; A4.2; A4.3; E2.1; E2.2.
- 6 Glass; beads. Melted and heavily burnt fragment emerald green. Dimensions 18 x 13 x 9mm.
- 7 B01. Wt. 26g. RE 8 (BC/CG). A BB1 jar rim and four bodysherds, the rim and two sherds are heavily burnt. Cf. Gillam (1976) nos 7–9, third-century. *c.* A.D. 200/220–270.

Grave goods

- 8* O03. Wt. 625g. RE 42, BE 100 (BC/GF). Ninety-four sherds comprising most of a constricted-necked jar with an everted rising rim with a cordon at the base of the shoulder, much of the rim missing. Perhaps later second to mid third-century.
- 9* F01. Wt. 62g. BE 100 (BC/GG). The lower half of a globular beaker or jar in Trier Rhenish ware. *c.* A.D. 200–260.

Finds of uncertain status

- 10 R03. Wt. 4g. (BC/GC). A greyware bodysherd with square/obtuse lattice decoration. Probably third-century.

- 11 ?O02. Wt. 2g. RE 3. A single small everted, oxidised jar rimsherd.

Interpretation Urned cremation burial of two individuals, probably with redeposited pyre debris in fill.

77 1967/3 PHASE 2

Plan FIG. 4.2; details FIG. 4.77.

Description No detailed records extant. Cist of sandstone slabs *c.* 0.61m square. Material from this grave is listed as being either from 1967/3 or 1967/3A. The significance of this division is unknown.

Cremated human bone Both groups from same individual. (i) from jar (12), origin of (ii) unknown.

- (i) Adult (21–40 years); female?? Wt. 97g (including 10.5g animal bone and 0.6g worked bone). Iron fused to bone.
- (ii) Adult (18–100 years); female?? Wt. 108.8 g (including copper alloy adhering to upper limb shaft; 4.3g animal bone and 5.4g worked bone).

Cremated animal bone Large ungulate.

Charcoal Observed in cremated bone.

Pyre goods

- 1* Copper alloy; vessel, rim fragment from small-necked vessel.
- 2 Copper alloy; handle fragment.
- 3 Copper alloy; sheet fragments (3) molten (15).
- 4 Iron; hobnail (2).
- 5 Iron; nail (15 and fragments).
- 6* Glass; bead. Short square-sectioned; cloudy deep blue. L. 4mm, section 3mm, perforation diameter 1.5mm. From cremated bone inside (12).

Fragments labelled as coming from 1967/3A:

- 7 Copper alloy; handle fragment.
- 8 Copper alloy; one fragment melted onto bone; one sheet fragment folded and distorted by heat; also two other fragments and sheet corner fragment with nail passing through it.
- 9* Bone veneer types: A2; A3.2; A4.3; A7.1 (FIG. 4.77, no. 9b); B1.1, C1.1, C2.1, D1.1; D1.3 (FIG. 4.77, no. 9a).
- 10 Antler: plug edge.
- 11 Glass; vessel. Melted blue/green lump containing fragment of copper alloy (3g).

Grave goods

- 12 B01. Wt. 180g. RE 12, BE 16 (BC/AG). Fragments from most of the profile of a BB1 jar with everted rim, of lesser diameter than the maximum girth, with obtuse lattice zone on the girth with a groove above. All the

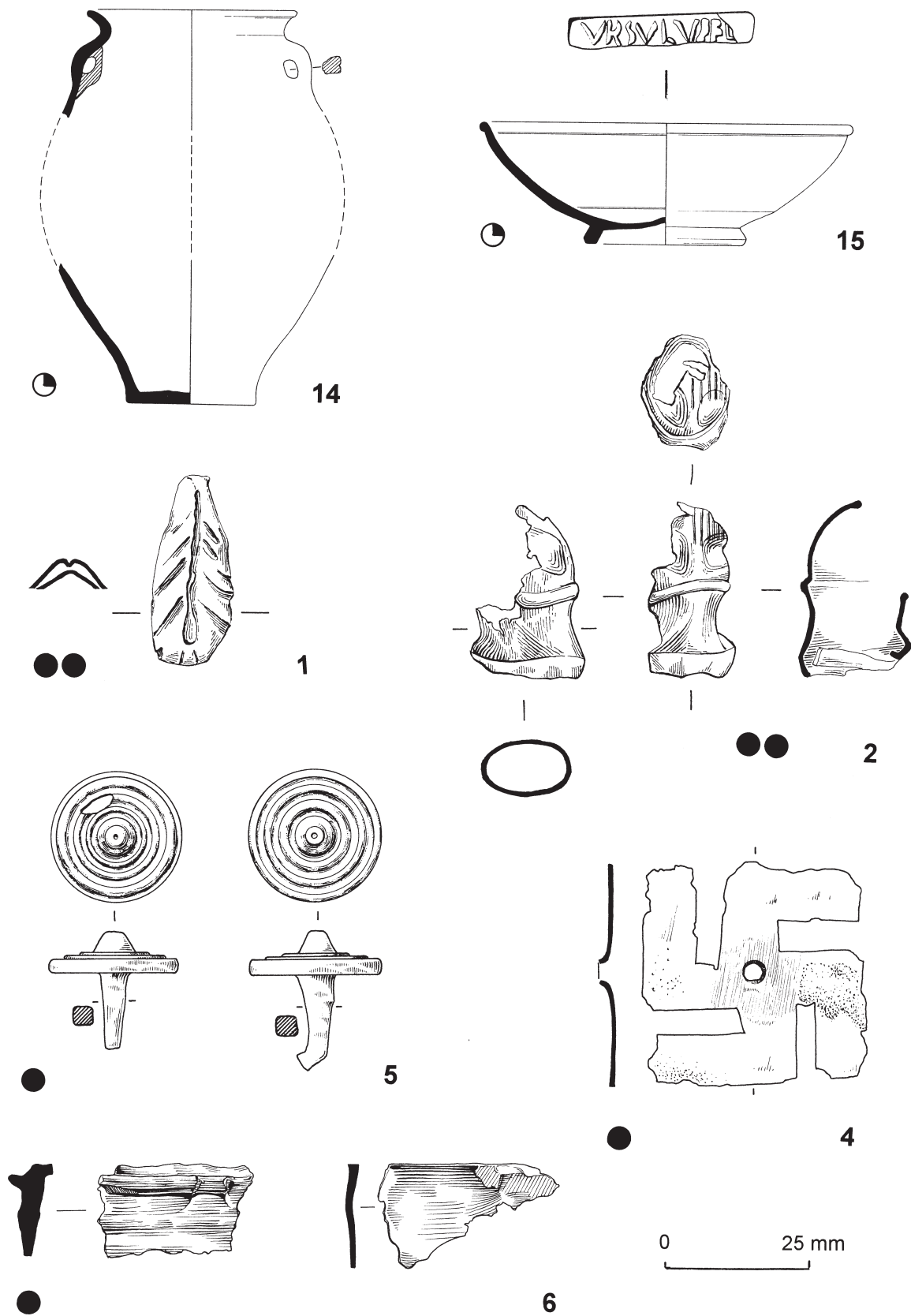


FIG. 4.75 Pyre and grave goods from urned cremation burial 75.

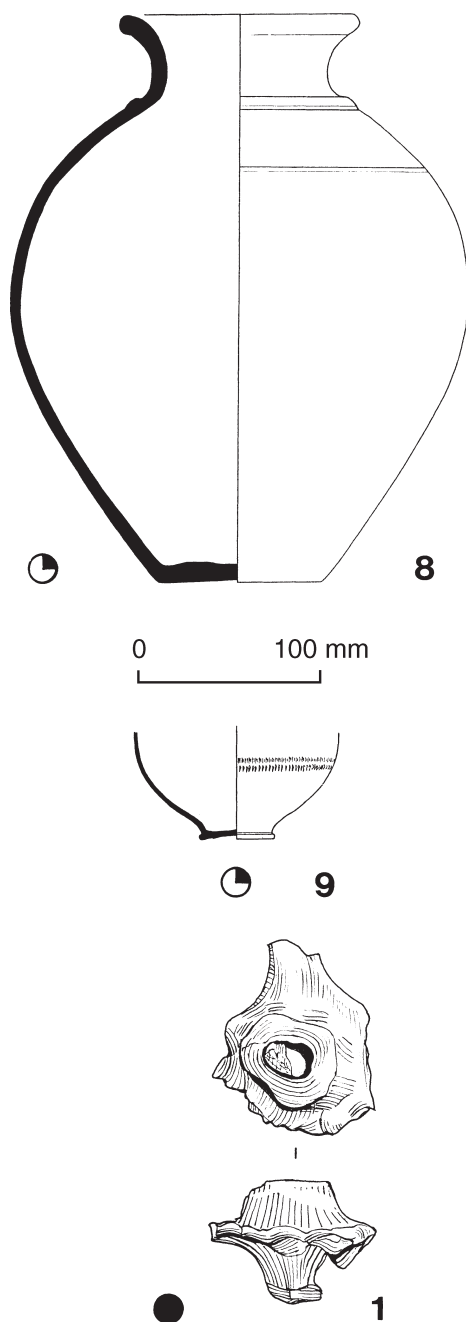


FIG. 4.76 Pyre and grave goods from urned cremation burial 76.

sherds are quite heavily burnt and oxidised. Cf. Gillam (1976) nos 7–8, early to mid third-century. c. A.D. 240–260.

Interpretation Urned cremation burial, probably with redeposited pyre debris in fill.

78 1967/218 PHASE 2

Plan FIG. 4.2; details FIG. 4.78.

Description Oval pit shallowly sloping to W and E and steep sides on N and S (0.91 x 0.53m; major axis W/E). Fill: dark brown/black with cremation

debris spread with shattered fragments of (5). Relationship: cut into F36.

Cremated human bone Subadult–adult (13–100 years); unsexed. Wt. 21.5g.

Charcoal *Alnus* sp. (*).

Pyre goods

- 1* Copper alloy; ?chape, hollow cast fragment.
- 2 Iron; hobnail.
- 3 Iron; nail (27 including 11 fragments).
- 4 Iron; sheet.

Grave goods

- 5* B01. Wt. 250g. RE 20 (BC/NH). Part of a BB1 jar rim and shoulder with everted rim of smaller diameter than the maximum girth and an obtuse lattice zone on the girth with a groove above. Cf. Gillam (1976) nos 8–9, mid to later third century. c. A.D. 240–270.
- 6* F03. Wt. 78g. BE 100 (BC/NH). A beaker base in Nene Valley colour-coated ware. c. A.D. 160/170+.

Interpretation Probably urned cremation burial with redeposited pyre debris in fill.

80 1967/100 PHASE 2

Plan FIG. 4.93; details FIG. 4.79.

Description No detailed records extant. ‘Small pit’. Finds records state no bone was found.

Finds of uncertain status

- 1* F01. Wt. 75g. BE 100 (BC/HI). Sherds from the lower half of an indented beaker in Trier Rhenish ware, c. A.D. 200–260.
- 2* F01. Wt. 25g. BE 100 (BC/HI). Sherds from the lower half of a globular, slit-folded, indented, necked beaker in Trier Rhenish ware. Parts of the footring are missing. c. A.D. 200–260.

Interpretation Uncertain but might be a vessel deposit or ‘memorial’.

81 1967/2 PHASE 2

Plan FIG. 4.2; details FIG. 4.80.

Description No detailed records extant. ‘Roughly circular pit’ (diameter 0.6m). Fill: (1) and (3) noted as being in fill. Jar (4) containing cremated bones set into a depression or small pit in base of grave pit. Number (5) is not recorded in original records as coming from this grave, and its provenance must be regarded as insecure.

Cremated human bone Adult (18–100 years); unsexed. Wt. 365.5g (including 10.5g animal bone and iron fused to bone). Pathology: odd tooth germ. From (4).

Cremated animal bone Large ungulate.

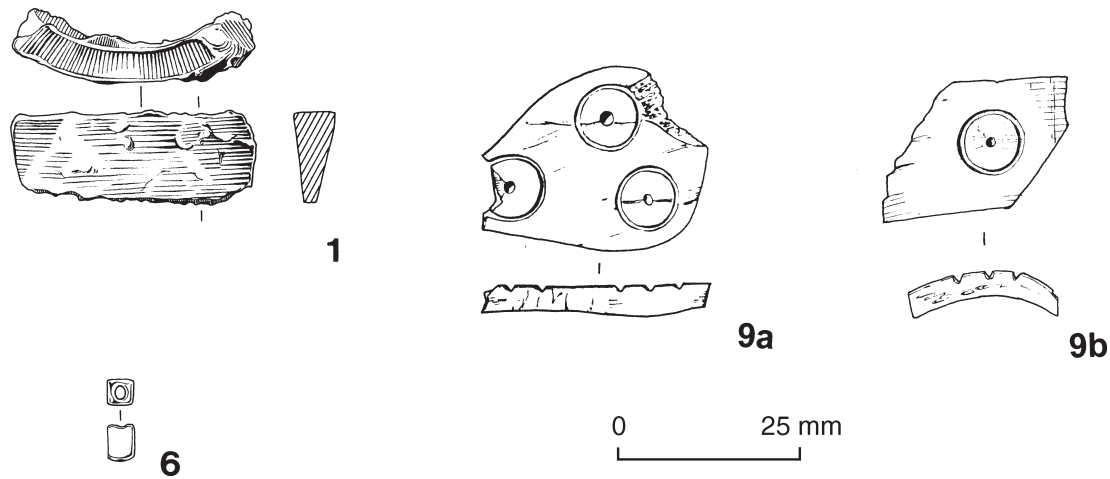


FIG. 4.77 Pyre goods from urned cremation burial 77.

Charcoal Observed in cremated bone.

Pyre goods

- 1 Copper alloy; two fragments distorted by heat and one pierced sheet fragment (strainer) found in cremated bone.
- 2 Iron; nail (2) adhering to cremated bone.
- 3* Bone; part of a two-piece rectangular box chape. Late second to third-century, *cf.* Greep 1993. L. 59mm, W. 34mm.

Grave goods

- 4* B01. Wt. 875g. RE 73, BE 60 (BC/AE). A BB1 jar, probably nearly complete except for a missing piece from the base which is likely to have been deliberately removed before burial, and part of the rim. The everted rim has a smaller diameter than the maximum girth which has an obtuse lattice zone on it with a groove above; exterior sooted, some surface spalling, perhaps from burning on one side. *Cf.* Gillam (1976) nos 8–9, mid to later third-century. *c.* A.D. 240–270.
- 5* S30. Wt. 900g. RE 100, BE 100 (BC/AE). Form 45, complete; an East Gaulish (Trier) mortarium with a bat-like head to the spout. The clay luting used to secure the mask to the collar of the vessel has not been smoothed off properly. The footring is well worn and gloss worn off trituration grits, no other wear. Probably third-century.

Interpretation Urned cremation burial possibly with redeposited pyre debris in fill.

82 1967/1 PHASE 3

Plan FIG. 4.2; details FIG. 4.81.

Description No detailed records extant. Oval pit (1.22 x 0.61m, 0.76m deep; major axis W/E). Jar (3) containing cremated bones found inverted in W

end, some nails with shanks pointing towards jar, possibly indicating the vessel was placed in a box. Number (7) noted as coming from fill.

Cremated human bone Adult (18–25 years); female. Wt. 388g (including 0.2g animal bone). Pathology op – T/L. (?intrusive).

Charcoal *Betula* sp. (*).

Pyre goods

- 1 Copper alloy; one curved fragment; two sheet fragments one distorted by heat.
- 2 Iron; nail (6) found with cremated bone including one shank with wood.

Grave goods

- 3* B01. Wt. 1000g. RE 92, BE 88 (BC/AB). A fairly complete BB1 jar with strongly everted rim, diameter well exceeding the maximum girth, with obtuse lattice zone with groove above, lightly burnt on one side. *Cf.* Gillam (1976) nos 12–14, early to mid fourth-century. *c.* A.D. 270–350.

Finds of uncertain status

- 4 B01. Wt. 2g. RE 6 (BC/AB). A small BB1 jar rim fragment. Third to mid fourth-century.
- 5 B01. Wt. 13g. RE 12 (BC/AB). A BB1 jar rim fragment. Later third to mid fourth-century.
- 6* B10. Wt. 25g. (BC/AB). Four shoulder sherds from a ?BB2 jar, one sherd has a graffito '+', probably an illiterate mark of ownership. Antonine to later third-century.
- 7 S20. Wt. 8g. (BC/WA). Fragments of form 37, in the style of Cinnamus ii of Lezoux. The surviving panels have: i) a leaf-cross (Rogers L11); ii) a kneeling stag (D.847/O.1704), over an acanthus (Rogers K14). Another fragment shows a small striated spindle, followed by the panel with the leaf-cross. The trifid motif and the rings (but not in a medallion) are on a form 30 from

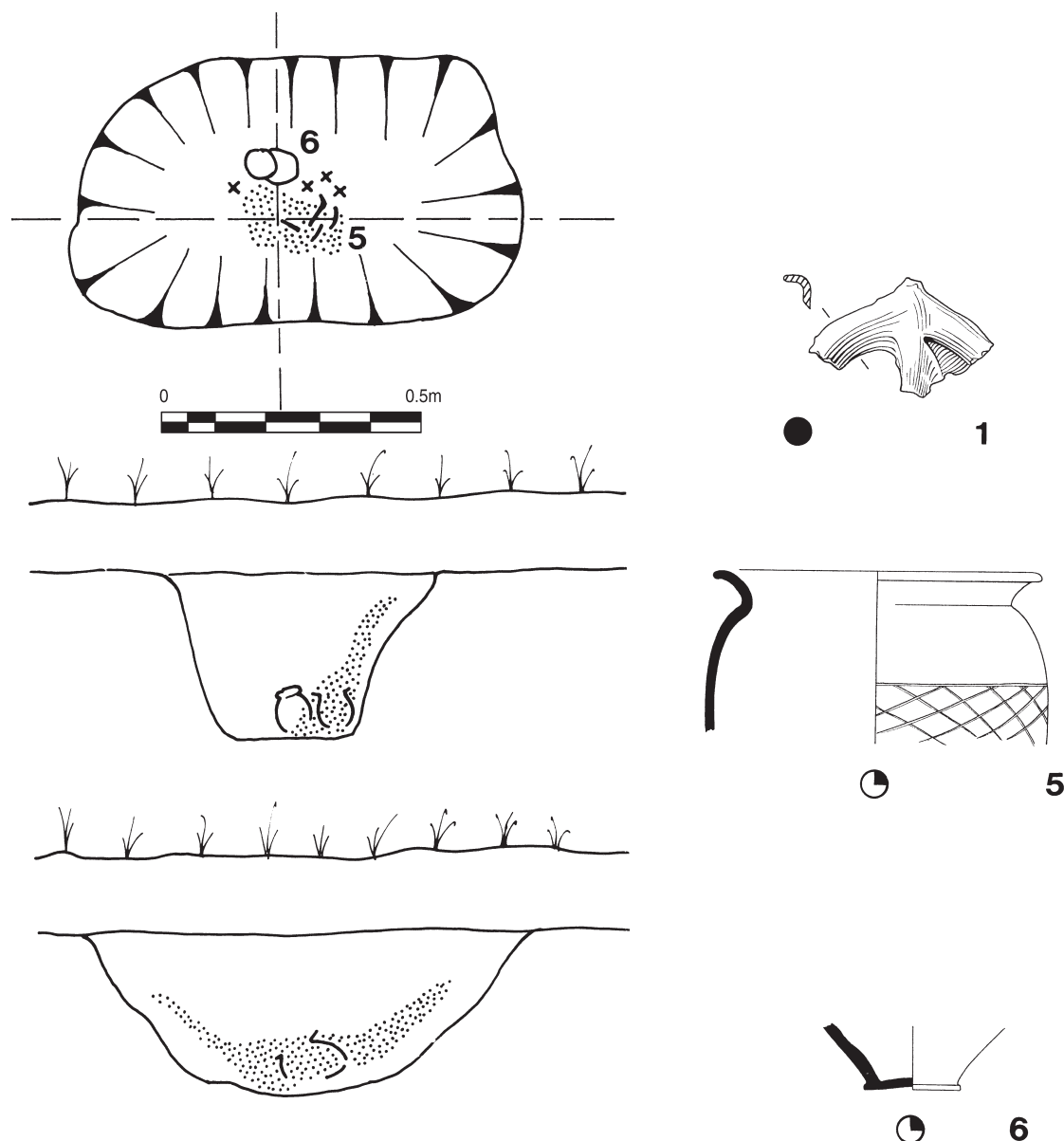


FIG. 4.78 Plan, section, pyre and grave goods from urned cremation burial 78.

Balmuirdy with the large CINNAMI retrograde stamp (Stanfield and Simpson 1958, pl. 159, 24). c. A.D. 150–180. With other fragments **105.10** and **106.23** which add some details.

- 8 S20. Wt. 45g. RE 12 (BC/AB). Two joining fragments of form 37, Central Gaulish. The ovolo (Rogers B5) is one used at Lezoux and Vichy on moulds stamped by Banuus and Cinnamus (the latter with the large CINNAMIOF retrograde stamp, 1a). The festoon and the large, thirteen-petalled rosette stamp (?Rogers C241) were used by Banuus at Lezoux, but the Brougham bowl looks more like a Vichy product in fabric, perhaps by Banuus. c. A.D. 170–200. (Number **282.18** is another fragment from the same

bowl but adds nothing to the decoration.)

Interpretation Urned cremation burial, possibly with redeposited pyre debris in fill.

83 1967/88 UNPHASED

Plan FIG. 4.2.

Description No detailed records extant. Oval pit (0.99 x 0.51m).

Cremated human bone Subadult–adult (13–100 years); unsexed. Wt. 21.4g.

Find of uncertain status

- 1 R07. Wt. 54g. (BC/GP). Six greyware bodysherds from a closed form.

Interpretation Uncertain.

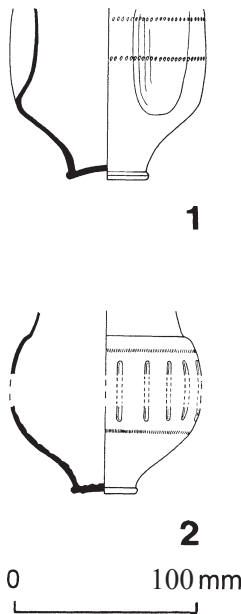


FIG. 4.79 Vessels from possible vessel deposit 80.

84 1967/98 UNPHASED

Plan FIG. 4.2; details FIG. 4.82.

Description Oval pit (0.91 x 0.84m). Cremated bones found in jar (1). Probably truncated by machine or plough.

Cremated human bone Subadult–adult (13–100 years); unsexed. Wt. 9.4g. Bone charcoal-stained.

Charcoal *Betula* sp. (*).

Grave goods

- 1* R01. Wt. 710g. BE 60 (BC/HK). Thirty-one sherds forming the base of a greyware jar.

Interpretation Urned cremation burial.

86 1967/42 UNPHASED

Plan FIG. 4.2.

Description No detailed records extant. Circular pit (diameter 0.46m) described as ‘completely robbed’.

Cremated human bone Wt. 0.4g (no identifiable skeletal elements).

Charcoal *Betula* sp. (*).

Pyre goods

- 1 Copper alloy; fragment.

Finds of uncertain status

- 2 O01. Wt. 16g. (BC/DL). Three oxidised bodysherds, north-western. Probably second to third-century.

Interpretation Probably redeposited pyre debris.

87 1967/43 UNPHASED

Plan FIG. 4.2.

Description No detailed records extant. Material recorded as coming from shallow depression on cobbled surface.

Cremated human bone Adult (18–100 years); unsexed. Wt. 20.8g (including 0.4g worked bone).

Finds of uncertain status

- 1 B01. Wt. 55g. BE 41 (BC/ED). Seven bodysherds and three base sherds from a

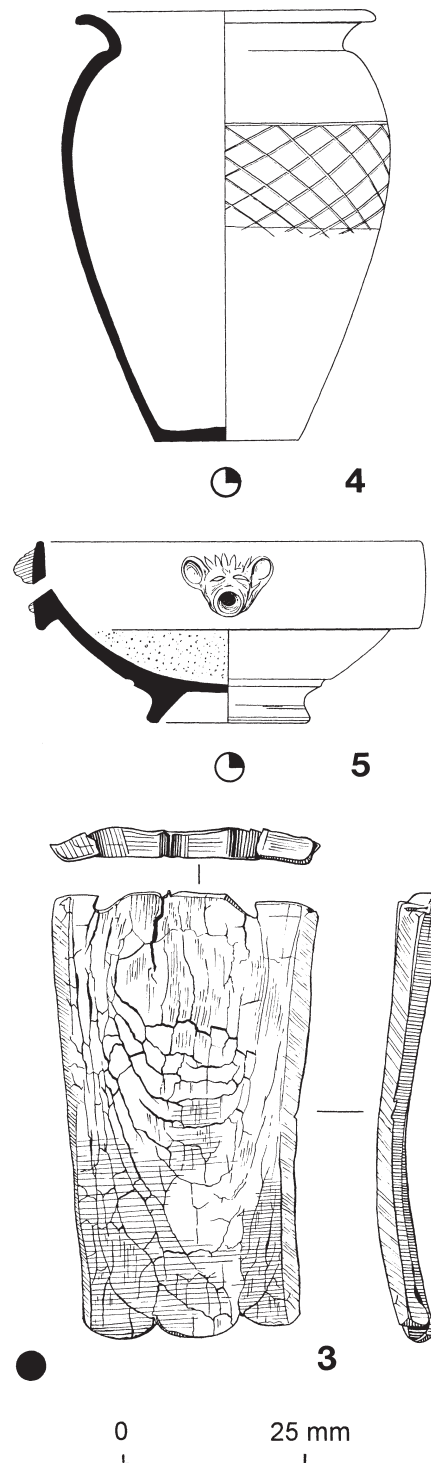


FIG. 4.80 Pyre and grave goods from urned cremation burial 81.

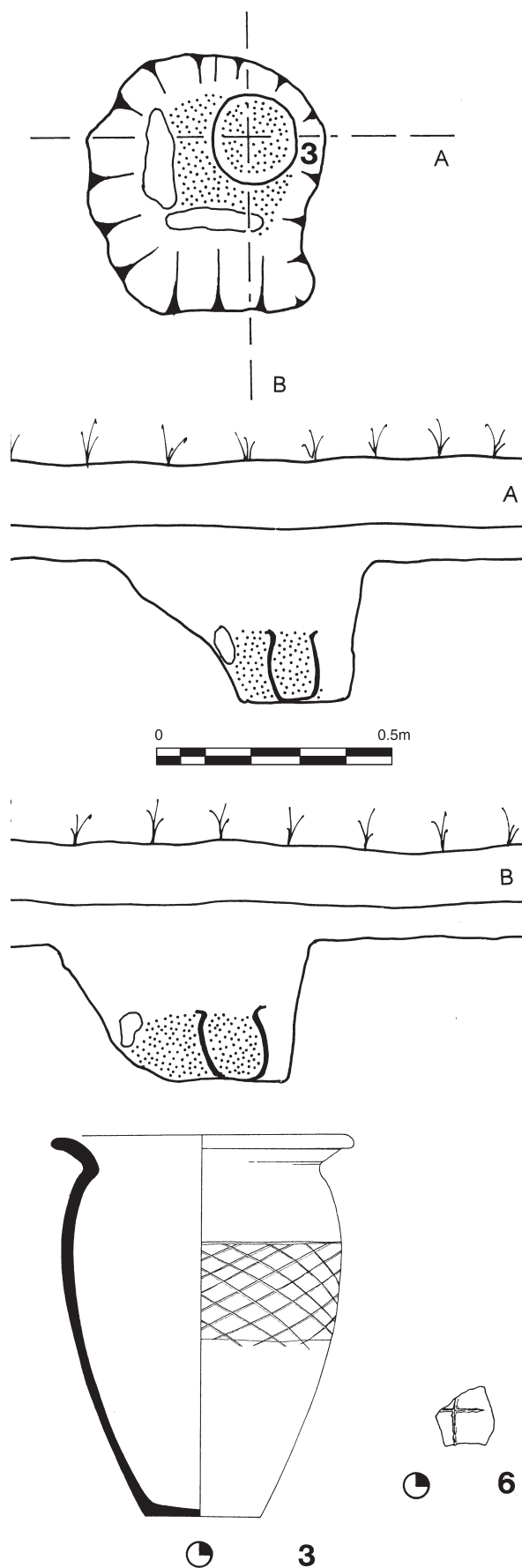


FIG. 4.81 Plan, section, urn and graffito (6) from urned cremation burial 82.

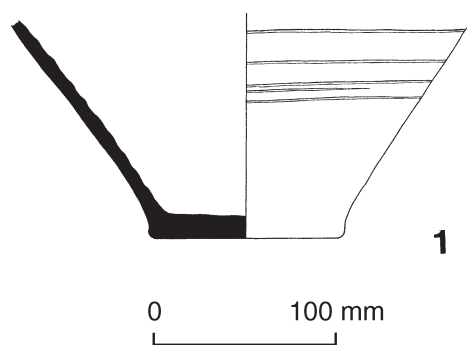


FIG. 4.82 Urn from urned cremation burial 84.

jar base, all fairly heavily burnt. Hadrianic to mid fourth-century.

Interpretation Spread.

88 1967/50 PHASE 2

Plan FIG. 4.2; details FIG. 4.83.

Description No detailed records extant. Approximately triangular pit (0.91 x 0.91m, 0.53m deep).

Cremated human bone Adult (18–100 years); unsexed. Wt. 20.8g (including 0.4g worked bone).

Pyre goods

- 1* Composite; nail copper-alloy head with iron shank. Diameter 8mm, L. 33mm.
- 2 Copper alloy; sheet fragment.
- 3* Iron; nail (9 including two uncorroded and fragments).
- 4 Bone veneer types: E2.1.
- 5 B01. Wt. 165g. RE 15, BE 52 (BC/DO). Sherds from a BB jar (or jars), a simple rim sherd, 26 bodysherds and four base sherds; 13 are heavily burnt, the obtuse lattice girth sherds have no groove above, heavily sooted. Perhaps A.D. 250–350.

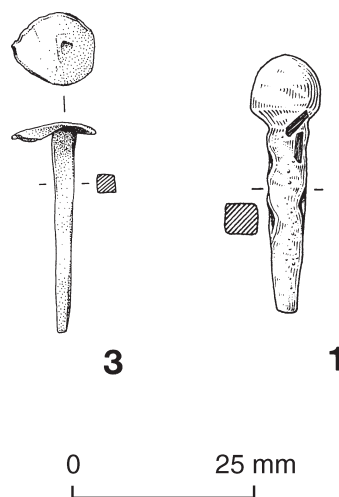


FIG. 4.83 Possible pyre goods from deposit 88.

- 6 B01. Wt. 175g. (BC/DO). Fifteen bodysherds from another BB1 jar several burnt and sooted, the obtuse lattice decorated zone has no groove above. *c.* A.D. 200–350.
- 7 S20. Wt. 10g. RE 10 (BC/DO). Form 31 rim fragment, burnt, Central or East Gaulish. Antonine or later.

Finds of uncertain status

- 8 S20. Wt. 13g. (BC/DO). Form 37 fragment, probably Central Gaulish. The decoration includes a fairly small double medallion to the right of a large, single festoon containing an animal to right (?lioness, etc). Antonine.

Interpretation Uncertain, deposition of pyre debris and other material.

89 1967/44 PHASE 2

Plan FIG. 4.2.

Description No detailed records extant. Roughly triangular pit with sides of *c.* 0.91m. Cremated bone found in jar (2) and scattered in pit.

Cremated human bone Adult (18–100 years); unsexed. Wt. 113.6g (including 0.8g animal bone).

Cremated animal bone Small ungulate.

Pyre goods

- 1 Iron; nail.

Grave goods

- 2 B01. Wt. 450g. RE 17, BE 64 (BC/DI). Six BB1 base sherds, 31 bodysherds, five with obtuse lattice decoration and two rim sherds; four sherds are burnt. The jar has an everted rim and a groove above the obtuse lattice zone, many sherds are sooted. *Cf.* Gillam (1976) no. 8, mid third-century. *c.* A.D. 240–270?

Finds of uncertain status

- 3 O01. Wt. 55g. RE 40 (BC/DI). Four rimsherds from a constricted-necked jar with a bifid rim. Probably north-western, early to mid third-century.
- 4 S30. Wt. 30g. (BC/DI). A fragment of form 31R, Central Gaulish. Mid to late-Antonine.
- 5 S30. (BC/DI). Form 31 (Sa) fragment, East Gaulish (Trier). Late second or third-century.

Interpretation Urned cremation burial.

90 1967/52 PHASE 2

Plan FIG. 4.2; details FIG. 4.84.

Description No detailed records extant. Square pit (0.61 x 0.61m).

Cremated human bone Three groups, (i) and (ii) from same individual, (iii) from second individual. (i) from beaker (10), (ii) from jar (8), (iii) from fill.

- (i) Infant (3 years); unsexed. Wt. 28.9g.
- (ii) Infant–juvenile (3–5 years); unsexed. Wt. 24.2g.
- (iii) Adult (21–35 years); unsexed. Wt. 86.8g (including 0.4g worked bone).

Charcoal Observed in (ii).

Pyre goods

- 1 Copper alloy; sheet fragment.
- 2 Iron; hobnail (5).
- 3 Iron; nail (11 plus fragments) from fill.
- 4 Iron; rivet.
- 5* Bone veneer types: A2; A4.1; A4.2 (FIG. 4.84, nos 5d–e); A7.1 (FIG. 4.84, no. 5c); A8.3, D1.1 (FIG. 4.84, nos 5a–b); E2.1 (FIG. 4.84, no. 5f).
- 6 Glass; vessel. Blue/green melted body fragment (1g) from cremated bones.
- 7 F03. Wt. 37g. RE 13 (BC/EO). Very burnt sherds from an indented beaker with simple vertical rim. *Cf.* Howe *et al.* (1980) nos 42–3, mid to later third-century; Perrin (1999). A.D. 225–300.

Grave goods

- 8* B01. Wt. 525g. RE 80, BE 16 (BC/EG). Much of a BB1 jar with everted rim the diameter of which does not exceed the maximum girth, with an obtuse lattice zone on the girth with a groove above. Much of the vessel seems slightly burnt, some slight traces of sooting. *Cf.* Gillam (1976) no. 8, mid third-century. *c.* A.D. 240–270.
- 9* B01. Wt. 380. RE 88, BE 100 (BC/EH). A slightly smaller than usual BB1 jar with everted rim, its diameter not exceeding the maximum girth, with obtuse lattice zone (no groove above), exterior sooted. *Cf.* Gillam (1976) no. 9, mid to later third-century. *c.* A.D. 250–270.
- 10* F01. Wt. 165g. RE 70, BE 100 (BC/EL). A largely complete Trier Rhenish ware squat indented beaker. *Cf.* Gillam (1970) type 45, A.D. 190–250. *c.* A.D. 200–260.
- 11* F01. Wt. 106g. RE 85, BE 100 (BC/EK). A globular-necked beaker in Trier Rhenish ware. *Cf.* Gillam (1970) type 44, A.D. 190–240. *c.* A.D. 200–260. (FIG. 8.5).
- 12* S20. Wt. 400g. RE 100, BE 100 (BC/EJ). Form 31, stamped SLCERIKI, complete and with heavily worn footring. Interior is heavily worn/pitted around the base. This uncommon stamp, attributed to Sacerus ii (Uncertain Die 1), occurs on forms 31, 38 and 79R or TgR. Stamps from other dies come from Chester-le-Street and the Wroxeter Gutter. The Brougham dish is the deep, Pudding Pan Rock variety. To judge by his distribution Sacerus worked at Lezoux. *c.* A.D. 175–200.

- 13* S20. Wt. 425g. RE 85, BE 100 (BC/EI). Form Curle 23, almost complete, Central Gaulish, with worn footring and interior of base heavily worn or eroded with only a third of the gloss surviving. The eight-petalled rosette in the centre of the base is only paralleled at Vichy (Museum of the

Compagnie Fermière), though it was not necessarily made there. The fabric of the Brougham piece suggests origin at Lezoux. Probably mid to late-Antonine.

Interpretation Urned double cremation burial with redeposited pyre debris in fill.

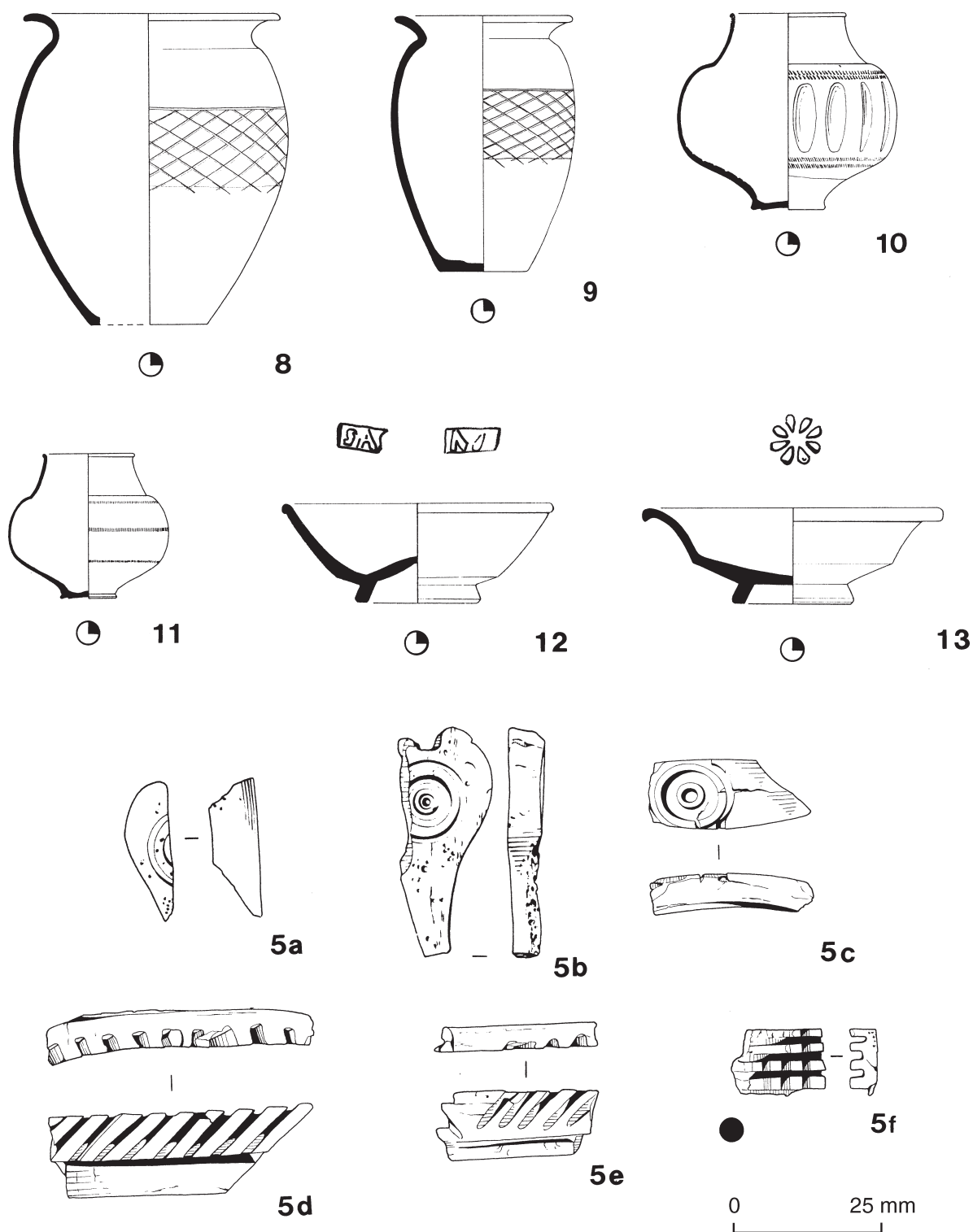


FIG. 4.84 Pyre and grave goods from urned cremation burial 90.

91 1967/54 PHASE 3

Plan FIG. 4.2; details FIG. 4.85.

Description No detailed records extant. Oval pit (0.91 x 0.38m).

Cremated human bone Adult (18–100 years); unsexed. Wt. 115.2g (including 3.4g worked bone).

Pyre debris

- 1 Copper alloy; fragment.
- 2 Iron; hobnail (6) from cremated bone.
- 3 Iron; nail (5 plus fragments) from cremated bone.
- 4 Bone veneer types: A1.1; A2; A3.1; A4.2; A5.4; A5.5; A8.3; C2.1.

Finds of uncertain status

- 5 B01. Wt. 190g. RE 48, BE 29 (BC/FM). Sherds from a BB1 jar rim and shoulder with an occasional girth sherd and two base sherds, nearly all slightly burnt. The rim is strongly everted and its diameter probably exceeds the maximum girth. The obtuse lattice zone on the girth does not have a groove above. Cf. Gillam (1976) nos 10–14, later third to mid fourth-century. c. A.D. 270–350.
- 6 B01. Wt. 25g. RE 8 (BC/FM). A rimsherd and perhaps a shoulder sherd from another BB1 jar. Cf. Gillam (1976) no. 8, mid third-century. Perhaps c. A.D. 230–270.
- 7* S20. Wt. 125g. RE 11, BE 44 (BC/FM). Eight fragments giving approximately a quarter of a large form 36, Central Gaulish, with a bead lip to the broad flange. The footring is heavily worn. c. A.D. 160–200.

Interpretation Uncertain, possibly redeposited pyre debris.

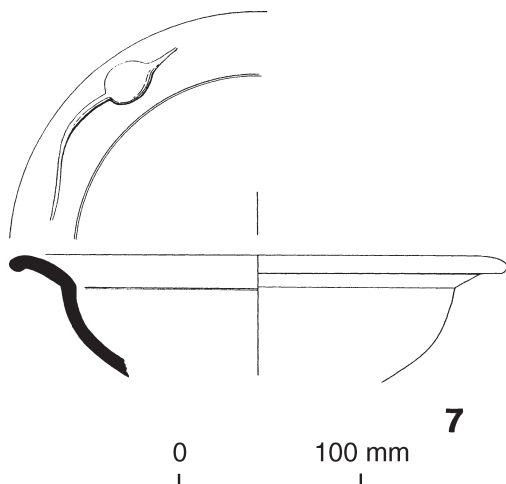


FIG. 4.85 Form 36 from possible pyre debris deposit 91.

93 1967/27 PHASE 1

Plan FIG. 4.2; details FIG. 4.86.

Description No detailed records extant. 'Crude' cist with sandstone capping slabs (0.61 x 0.46m). Cremated bones described as being within and around jar (5).

Cremated human bone Subadult–adult (13–25 years); unsexed. Wt. 20.1g.

Pyre goods

- 1 Copper alloy; vessel rim fragment.
- 2 Copper alloy; two fragments, distorted by heat.
- 3 Iron; nail (6 plus fragments).
- 4 B01. Wt. 4g. RE 6 (BC/CP). Two joining rim fragments of a BB1 jar rim, heavily burnt. Probably third to early fourth-century.

Grave goods

- 5* R01. Wt. 375g. RE 46, BE 95 (BC/CP). Much of a greyware jar, a BB copy, with everted, rising rim and square lattice. Probably early third-century. Possibly c. A.D. 200–240.

Finds of uncertain status

- 6 R03. Wt. 6g. RE 16 (BC/CP). A constricted-necked jar rim fragment with an everted, rising rim.
- 7 R03. Wt. 9g. (BC/CP). Two greyware bodysherds, black slip on the exterior.
- 8 B01. Wt. 5g. BE 10 (BC/CP).
- 9 F03. Wt. 15g. RE 12 (BC/WF). A Nene Valley colour-coated ware bag beaker rim fragment with cornice rim and decorated with rouletting on the wall. From fill. c. A.D. 160/170–250.

Interpretation Urned cremation burial, possibly with redeposited pyre debris in fill, though material may have spilled from broken vessel.

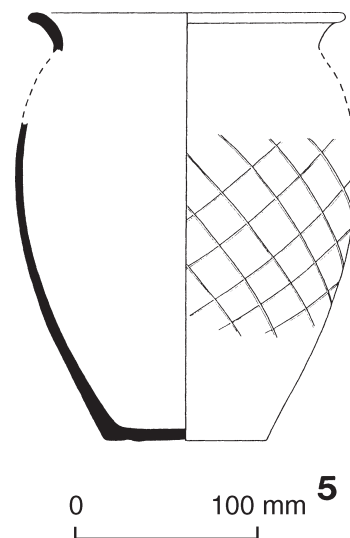


FIG. 4.86 Urn from urned cremation burial 93.

94 1967/16 PHASE 2

Plan FIG. 4.2; details FIG. 4.87.

Description No detailed records extant. Rectangular cist with intact sides, cobbles packed into corners (0.99 x 0.61m).

Pyre goods

- 1 Copper alloy; sheet fragment.
- 2 Iron; nail (plus fragment).
- 3 Bone veneer types: C1.2.
- 4* Bone; scabbard chape. Distorted fragment from two-piece rectangular box chape. Late second to mid third-century. L. 26mm, W. 22mm.
- 5* Antler; roundel ring, and ring and dot ornament. Diameter 26mm, Ht. 17mm.
- 6 Glass; vessel. Blue/green melted fragments containing copper-alloy corrosion products (3g).

Finds of uncertain status

- 7 B01. Wt. 275g. RE 21, BE 26 (BC/BM). Two BB1 jar rimsherds, a base sherd and 17 bodysherds from a BB1 jar with an everted rim, sooted, with obtuse burnished lattice zone on the girth, some sherds slightly burnt. Cf. Gillam (1976) no. 9, later third-century, c. A.D. 250–270.
- 8 O01. Wt. 35g. RE 24 (BC/BN). Two oxidised, bifid-rimmed, constricted-necked jar rimsherds. Similar to those produced at Walton-le-Dale (Evans and Rátkai forthcoming a). Perhaps c. A.D. 200–270.

Interpretation Possibly redeposited pyre debris.

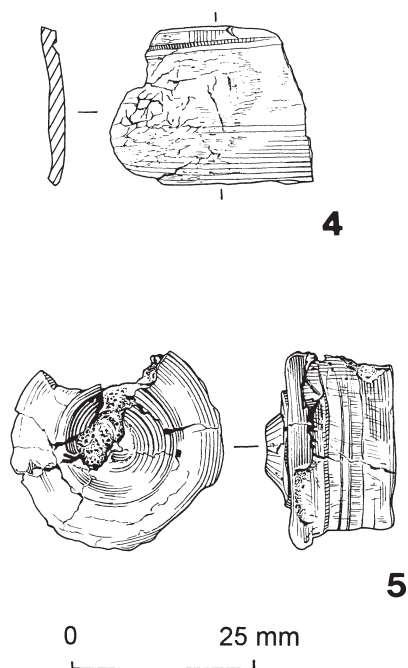


FIG. 4.87 Pyre goods from possible pyre debris deposit 94.

95 1967/17 PHASE 2

Plan FIG. 4.2; details FIG. 4.88.

Description No detailed records extant. Vessels placed on sandstone slab, presumably in pit. Cremated bone probably from (4). Number (6) used as lid to (4). Number (8) placed in (7). Relationships: from photograph it can be seen that 94 is very close to this deposit and the base is lower than the slab. Had 94 been inserted later than this feature, it would have been disturbed, but the excavator was of the opinion that such disturbance as exists is the result of machining. It is therefore probably that 95 is later than 94.

Cremated human bone Infant (4–5); unsexed. Wt. 132.2g (including 0.4g worked bone).

Pyre goods

- 1 Iron; nail shank found in cremated bone.
- 2 Iron; nail (2).
- 3 Ivory recorded in original records but now missing.

Grave goods

- 4 B01. Wt. 500g. RE 53, BE 54 (BC/BG). Numerous sherds from a complete profile of a BB1 jar (much fragmented) with a strongly everted rim and obtuse burnished lattice zone on the girth with a groove above. The rim is of a similar or slightly lesser diameter than the maximum girth. Perhaps c. A.D. 240–270.
- 5* Q02. Wt. 710g. RE 100, BE 100 (BC/BJ). A flagon with a flanged rim in an oxidised white-slipped fabric, the base and the upper body and rim being present. Cf. Gillam (1970) type 17, c. A.D. 180–360. Probably early to mid third-century.
- 6* B01. Wt. 190g. RE 44, BE 100 (BC/BH). A complete BB1 incipient beaded-and-flanged bowl (parts of the rim are missing) with intersecting arc decoration on the wall. c. A.D. 200–270.
- 7* B01. Wt. 270g. RE 85, BE 86 (BC/BI). About 75% of a simple-rimmed BB1 dish, interior and exterior burnished. Third to mid fourth-century.
- 8* Iron; knife. Fragmentary tanged blade, burnt. Placed in (7). W. 24mm.

Finds of uncertain status

- 9 S20. Wt. 60g. Two fragments of form 37, Central Gaulish, perhaps by Servus iv (Rogers's Servus II) or a contemporary. c. A.D. 160–200.

Interpretation Urned cremation burial.

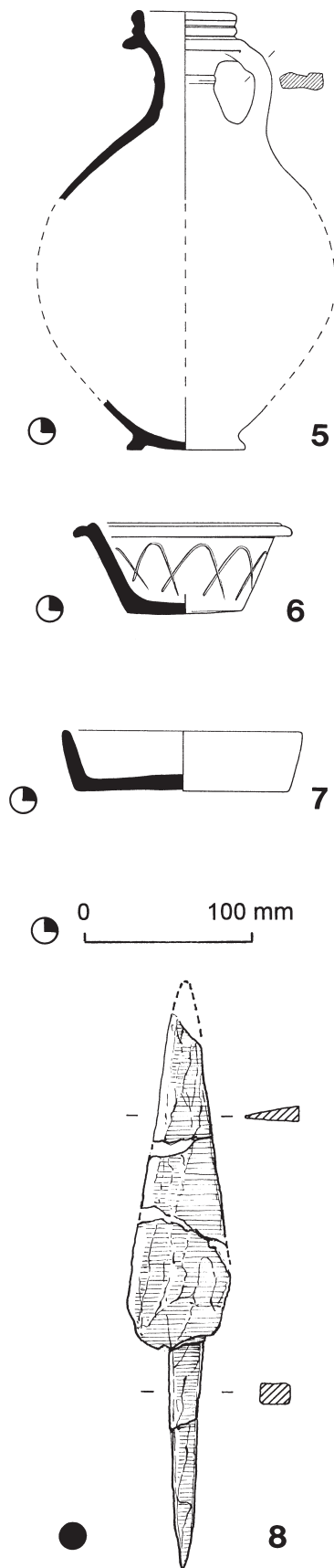


FIG. 4.88 Grave goods from urned cremation burial 95.

96 1967/51 PHASE 2

Plan FIG. 4.2.

Description No detailed records extant. A large irregular disturbed pit, original dimensions not ascertained. A samian platter and colour-coated beaker found intact at eastern end, but now only known from fragments. Vessels probably damaged and lost on site as finds records only note samian rim and make no mention of beaker. Probable that other material, which is likely to have included some bone, is also missing.

Cremated human bone Adult (18–100 years); unsexed. Wt. 38g (including 1g animal bone and 1.3g worked bone).

Pyre goods

- 1 Silver; ring fragment.
- 2 Iron; hobnail. Diameter 12mm.
- 3 Iron; nail (10 plus fragments).
- 4 Glass; bead. Melted now spherical. Cloudy deep blue.

Grave goods

- 5 S30. Wt. 2g. Four East Gaulish rim fragments from the same vessel. Late second or third-century. Recorded as complete when observed first.
- 6 ?F04. Wt. 3g. (BC/WO). A Central Gaulish Rhenish bodysherd with incised decoration under slip. Possibly c. A.D. 150–200. Possibly from colour-coated beaker which was recorded as complete when observed first.

Finds of uncertain status

- 7 B01. Wt. 12g. (BC/DN). A BB1 jar rim. Probably mid third to mid fourth-century.
- 8 B01. Wt. 7g. RE 5 (BC/DN). A BB1 jar rim. Probably third-century.
- 9 B01. Wt. 8g. (BC/WO). Three BB1 bodysherds. Hadrianic to mid fourth-century.

Interpretation Uncertain.

97 1967/18 PHASE 2

Plan FIG. 4.2; details FIG. 4.89.

Description No detailed records extant. Described as 'plundered' cist with 0.91 x 0.56m slab on N side and no slab remaining on S side, fallen slabs in fill.

Charcoal *Alnus* sp. (*).

Finds of uncertain status

- 1* B01. Wt. 145g. RE 42 (BC/DJ). Three rimsherds and four bodysherds from the rim and shoulder of a BB1 jar with everted rim, of about equal diameter to the maximum girth, with obtuse lattice decoration on the girth, sooted and some sherds burnt. Cf. Gillam (1976) no. 10, later third-century. c. A.D. 260–280.

- 2 R03. Wt. 3g. (BC/DJ). A greyware jar bodysherd.
- 3 ?O01. Wt. 10g. (BC/DJ). An oxidised closed form bodysherd. Perhaps second to third century.
- 4 G01. Wt. 18g. (BC/DJ). A bodysherd in a hand-made Dales-type fabric. Perhaps later third to fourth-century.
- 5 F03. Wt. 1g. (BC/DJ). A Nene Valley colour-coated ware beaker bodysherd from a bag beaker with barbotine decoration. c. A.D. 160/170–250.
- 6 S20. (BC/DJ) Form 37, rim fragment, Central Gaulish, in the style of Do(v)eccus of Lezoux. The ovolo is Stanfield and Simpson 1958, pl. 137, 5, and the dancer in one of the panels is D.216/O.353. The vertical border has a large bead at the top, but does not join the horizontal bead-row, a feature of Do(v)eccus's style. c. A.D. 165–200. Also a flake and a scrap of Central Gaulish. Both probably Antonine.

Interpretation Uncertain.

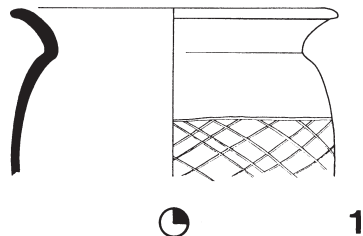


FIG. 4.89 Jar from deposit 97.

98 1967/29 PHASE 2

Plan FIG. 4.2; details FIG. 4.90.

Description No detailed records extant. Pit.

Cremated human bone Subadult–adult (13–100 years); unsexed. Wt. 6.6g.

Pyre goods

- 1a Iron; nail (6 plus fragments).
- 1b Copper alloy; folded sheet.
- 2 B01. Wt. 25g. RE 12 (BC/CV). A BB1 jar rim fragment, very heavily burnt. Cf. Gillam (1976) nos 5–6, later second to early third-century. Probably later second-century.

Finds of uncertain status

- 3* R18. Wt. 130g. RE 11. A rimsherd from a wide-mouthed jar with a triangular-sectioned rim. Cf. Buckland *et al.* 1980.

Interpretation Uncertain.

99 1967/14 PHASE 2

Plan FIG. 4.93.

Description No detailed records extant. Large cist aligned E/W, only S side recorded as extant (1.23m long, 0.61m deep). Disturbed by machining that had driven large boulder into W end. Coins (4 and 5) described as 'near' boulder.

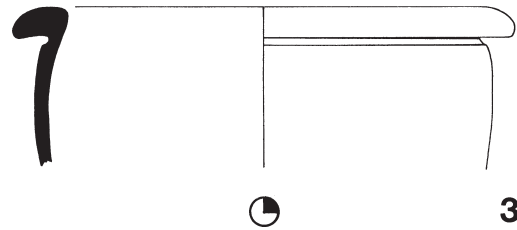


FIG. 4.90 Jar from deposit 98.

Cremated human bone Immature (0–18 years); unsexed. Wt. 1g including 0.6g worked bone.

Charcoal *Fraxinus* sp. (xx).

Betula sp. (xx).

Pyre goods

- 1 Iron; nail from cremated bone, burnt.
- 2 Bone veneer type: B1.1.

Find of uncertain status

- 3 Silver; coin. Denarius A.D. 138–161. Antoninus Pius. Obv: (Antoni)nus Aug Pius PPT (AVG)? Rev: (Salus)? AUG. Salus standing left feeding serpent arising from altar. S.C. In left hand cornucopia.
- 4 Copper alloy; coin. Dupondius A.D. 84–89. RIC II, 244 *et seq.*, Domitian. Obv: Illegible; Rev: Fidei Publicae. Well worn.
- 5 B01. Wt. 17g. RE 14 (BC/DK). Two BB1 jar rimsherds. Perhaps third-century.
- 6 B01. Wt. 13g. RE 10 (BC/DK). A BB1 jar rimsherd, strongly everted, c. A.D. 260–350. Also 15 BB1 bodysherds including obtuse lattice decorated sherds, several burnt, presumably from one of the above jars.
- 7 Q01. Wt. 26g. (BC/DK). Eleven bodysherds from a white-slipped flagon. First to third-century.
- 8 S30. Wt. 2g. RE 2 (BC/DK). Form 45 collar fragment, East Gaulish (Rheinzabern). Late second or third-century. S30. Wt. 2g. RE 2 (BC/DK).

Interpretation Uncertain.

100 1967/21 UNPHASED

Plan FIG. 4.2.

Description No detailed records extant. Small sandstone cist.

Cremated human bone Subadult–adult (13–100 years); unsexed. Wt. 13.5g (with 0.3g worked bone).

Pyre goods

- 1 Copper alloy; fragment.
- 2 Iron; fragment.
- 3 Bone veneer types: A1; A5.4.

Finds of uncertain status

- 4 Glass. Fragment recorded but not now identifiable.

Interpretation Redeposited pyre debris.