

## PART 3: Deposits 201–350

### 201 1967/63 PHASE 3B

Plan FIG. 4.149; details FIG. 4.169.

**Description** Records limited. No pit identified but vessels covered by sandstone slab and surrounded by brown soil. Cremated bones in (1).

**Cremated human bone** Adult (30–45 years); male? Wt. 1078.5g. Pathology: Schmorl's – 5T.

#### Grave goods

- 1\* B01. Wt. 1200g. RE 65, BE 65 (BC/ER). A fairly complete BB1 jar with an everted rim of slightly greater diameter than the maximum girth, with obtuse lattice zone on the girth with a groove above. The vessel shows evidence of quite heavy burning. Cf. Gillam (1976) nos 9–11, later third to early fourth-century. Perhaps c. A.D. 270–300.
- 2\* F02. Wt. 155g. RE 43, BE 100 (BC/ES). A near-complete Nene Valley colour-coated ware pentice-moulded beaker. Cf. Howe *et al.* (1980) nos 55–6, fourth-century. (FIG. 8.1).

**Interpretation** Urned cremation burial.

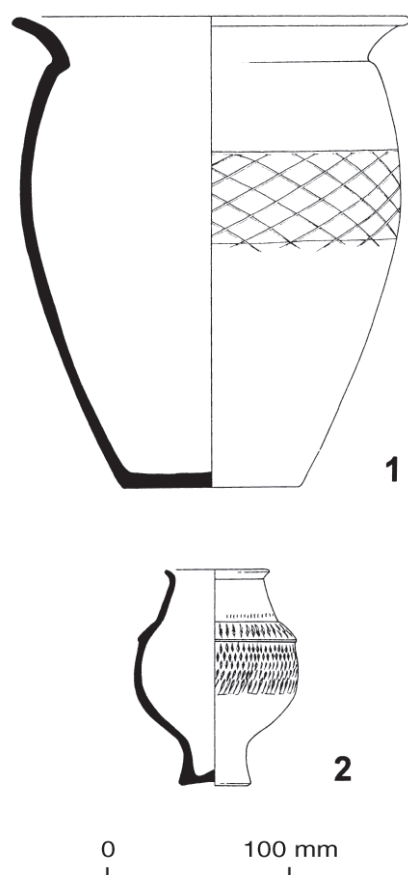


FIG. 4.169 Grave goods from urned cremation burial 201.

### 202 1967/33 PHASE 1

Plan FIG. 4.149; details FIG. 4.170; see also FIG. 3.9.

**Description** Massive sandstone cist with some blocks dressed, southern side missing. Finds (5) and (6) described as unstratified in fill.

**Cremated human bone** Two groups both from fill.

- (i) Subadult–adult (13–100 years); unsexed. Wt. 16g (including 1g worked bone).
- (ii) Subadult–adult (13–100 years); unsexed. Wt. 19.8g (including 0.4g worked bone).

**Charcoal** Pomoideae (\*).

#### Pyre goods

- 1 Copper alloy; fragment.
- 2 Bone veneer types: A1; A2.
- 3 B01. Wt. 23g. RE 8 (BC/CT). A rim and a shoulder fragment from a BB1 jar with everted rim, diameter less than the maximum girth, heavily burnt. Cf. Gillam (1976) nos 7–9, third-century. c. A.D. 200/220–270.

#### Finds of uncertain status

- 4\* G02. Wt. 140g. RE 18 (BC/CT). An East Yorkshire calcite-gritted ware Knapton-type jar rim. Third-century.
- 5 R03. Wt. 75g. RE 5 (BC/WG). Twelve bodysherds and a rimsherd from a jar. Possibly cf. Gillam (1976) no. 9, mid to later third-century.
- 6 S30. Wt. 12g. BE 10 (BC/WG). Form 31 base, East Gaulish (Trier). Late second or third-century.

**Interpretation** Redeposited pyre debris.

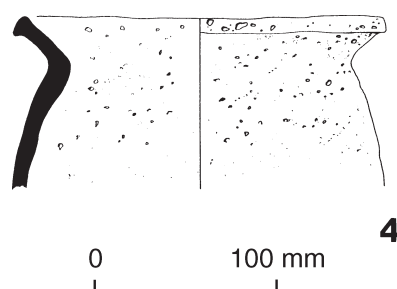


FIG. 4.170 Jar from pyre debris deposit 202.

### 203 1967/71 PHASE 2

Plan FIG. 4.149; details FIG. 4.171.

**Description** Records limited. Described as 'large irregularly shaped pit: crude cist' (1.07 (max) x 0.74m, depth 0.25m). Cremated bones from jars (2) and (3). Beaker (5) upright inside (4).

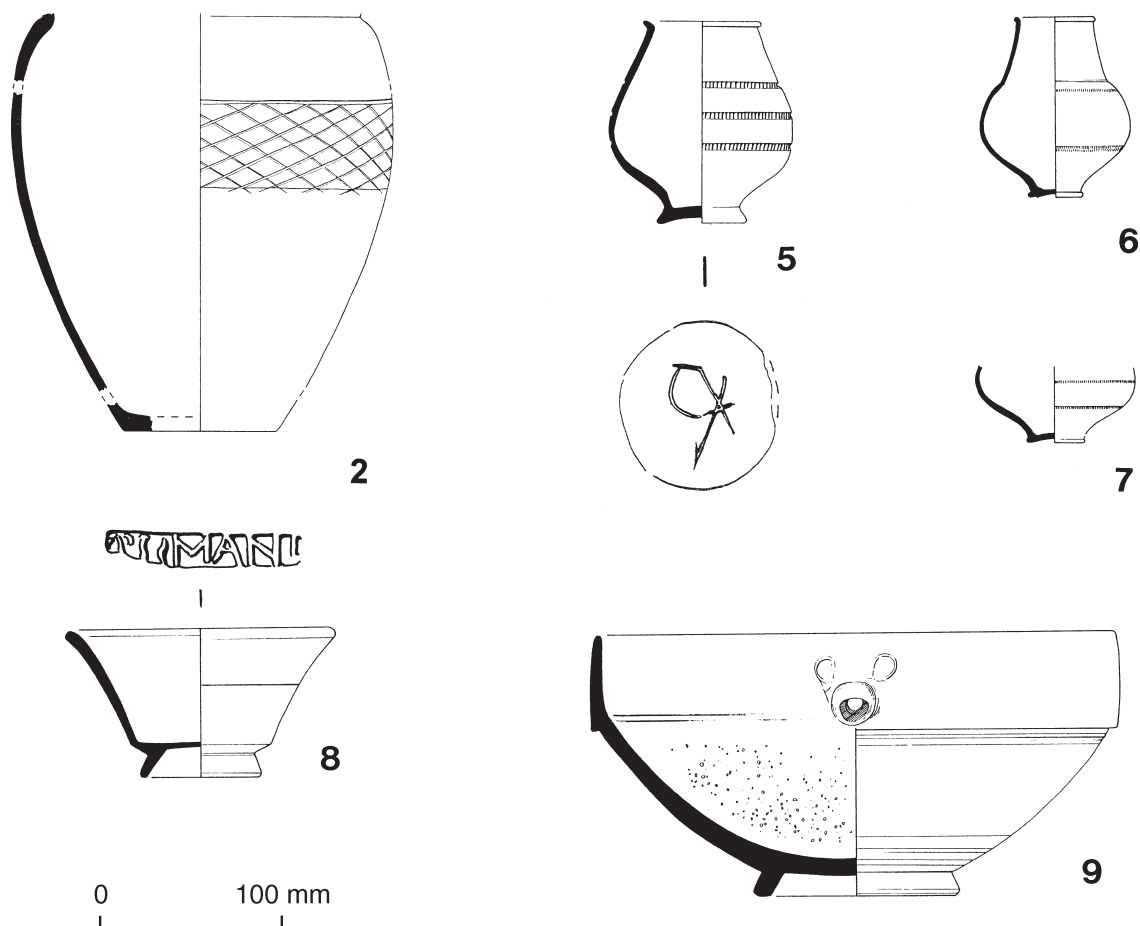


FIG. 4.171 Grave goods from urned cremation burial 203.

**Cremated human bone** Two groups from two individuals, cremated separately. (i) from jar (2), (ii) from jar (3).

(i) Adult (30–45 years); female?? Wt. 423.2g (including 1.8g animal, 0.2g worked bone). Pathology: ddd – C.

(ii) Infant (2–3 years); unsexed. Wt. 21.4g.

**Cremated animal bone** Large ungulate.

**Charcoal** Observed in (ii).

#### Pyre goods

1 Bone veneer types: C2.1.

#### Grave goods

- 2\* B01. Wt. 360g. BE 17 (BC/FB). A base fragment and some wall sherds from a BB1 jar with obtuse lattice decoration on the girth with a groove above. Many sherds sooted and some burnt.
- 3 B01. Wt. 220g. BE 60 (BC/FH). Sherds from the lower half of a BB1 jar with obtuse lattice zone on the girth with a groove above. *c.* A.D. 240+.
- 4 B01. Wt. 145g. BE 7 (BC/FD). Seventy-one bodysherds and a base sherd from a BB1 jar with obtuse lattice zone on the girth with a groove above. A.D. 240+.

- 5\* R16. Wt. 190g. RE 93. BE 100 (BC/FF). A pear-shaped beaker with three lines of rouletted decoration on the body. There is a graffito under the base, perhaps reading 'CX'. Perhaps an apotropaic mark rather than one of ownership.
- 6\* F01. Wt. 90g. RE 100, BE 100 (BC/FC). A necked globular Trier Rhenish ware globular beaker. *c.* A.D. 200–260.
- 7\* F01. Wt. 38g. BE 100 (BC/FE). Sherds forming the base of a globular beaker in Trier Rhenish ware. *c.* A.D. 200–260.
- 8\* S20. Wt. 268g. RE 91, BE 98 (BC/FI). Form 33, substantially complete, stamped PRIMANI (Die 6d of Primanus iii). The footring is weathered, but also probably worn. Heavily worn around interior of base. Primanus iii worked at Lezoux in the mid and late-Antonine period. While there is no useful dating evidence for this die, stamps from others are in the Wroxeter Gutter, at Bainbridge, Benwell and Pudding Pan Rock, and on forms 15/31, 31R, 79 and 80. *c.* A.D. 165–200.
- 9\* S30. Wt. 1877g. RE 63, BE 100 (BC/FG). Numerous fragments, probably giving a

complete, large form 45, with spout looking like a bat's head. The footring shows moderate wear, as does the grit. East Gaulish (Trier) and probably third-century.

#### Finds of uncertain status

- 10 S20. (BC/FI). A small fragment from a worn footring of a dish, probably form 31, Central Gaulish. Probably mid to late-Antonine.

**Interpretation** Double urned cremation burial.

### 204 1967/73 PHASE 3

Plan FIG. 4.149; details FIG. 4.172.

**Description** Records limited. Circular pit (0.53m diameter, remaining depth 0.15m). Cremated bone found with pottery sherds (3) and (4) but unclear which vessel they had originally been in. Truncated and damaged by machine.

**Cremated human bone** Adult (25–100 years); male?? Wt. 306g (including 1g animal bone and 0.7g worked bone). Pathology: destructive lesion – 1L.

**Cremated animal bone** Domestic chicken.

#### Pyre goods

- 1 Iron; hobnail.
- 2 Bone veneer type: A4.1.

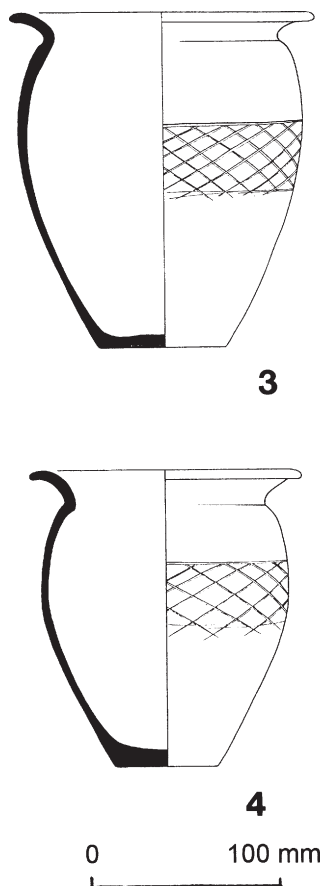


FIG. 4.172 Grave goods from urned cremation burial 204.

#### Grave goods

- 3\* B01. Wt. 290g. RE 7, BE 100 (BC/FU). A BB1 jar profile (the drawing suggests that formerly more of the vessel may have been present) with everted rim and decorated with an obtuse lattice zone with a groove above, exterior sooted. Cf. Gillam (1976) nos 9–14, later third to mid fourth-century. c. A.D. 270–300.
- 4\* B01. Wt. 233g. RE 10, BE 100 (BC/FT). Sherds from a BB1 jar with everted rim of greater diameter than the maximum girth with obtuse lattice zone with a groove above it, one shoulder sherd seems heavily burnt. Cf. Gillam (1976) nos 12–14, early to mid fourth-century. c. A.D. 270–330.

#### Finds of uncertain status

- 5 S20. Wt. 4g. BE 7 (BC/FU). Footring fragment, Central Gaulish. Antonine.

**Interpretation** Urned cremation burial.

### 205 1967/70 UNPHASED

Plan FIG. 4.149.

**Description** Records limited. Roughly circular pit (diameter 0.61m, depth 0.13m). Small quantity of cremated bones originally recorded from within (1), but these do not survive in archive. Truncated by machine.

#### Grave goods

- 1 B01. Wt. 275g. BE 11 (BC/FQ). Numerous sherds from a BB1 jar, many sherds heavily burnt and some are sooted, some sherds have obtuse lattice decoration, c. A.D. 200–350.
- 2 B01. Wt. 15g. BE 13 (BC/FQ). A BB1 dish/bowl lower wall base sherd. Hadrianic to mid fourth-century.

#### Finds of uncertain provenance

- 3 Silver; coin. Denarius, Hadrian, A.D. 119–122. Obv: IMP CA[ESAR TRA]IAN HADRIANVS AVG. Bust laur. Cuir. Dr. r. Rev: P.M. TR.P. COS III Roman seated left on cuirass with victory and spear. Recorded as 'next to' this burial.

**Interpretation** Possibly urned cremation burial.

### 206 1967/181 UNPHASED

Plan FIG. 4.149; details FIG. 4.173

**Description** No pit identified. Beaker (1) possibly originally wedged by stones. Uncovered by machine.

#### Find of uncertain status

- 1\* F02. Wt. 375g. BE 100 (BC/LR). The lower two-thirds of an indented scale beaker in

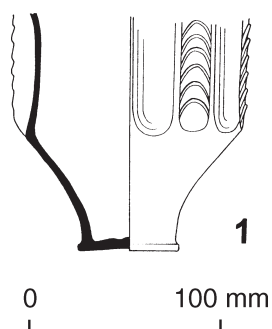


FIG. 4.173 Beaker from deposit 206.

Nene Valley colour-coated ware. Cf. Perrin (1999), later second to later third-century.

**Interpretation** Uncertain.

### 207 1967/213 PHASE 3

Plan FIG. 4.149.

**Description** Sub-rectangular pit (1 x 0.54m; major axis N/S). Fill: 'extremely black with large lumps of charcoal'. NB A green-glazed medieval sherd recorded as coming from fill but this does not survive in archive.

**Cremated human bone** Subadult–adult (13–100 years); unsexed. Wt. 4.2g.

**Charcoal** *Alnus* sp. (xxx). Fragments of a large diameter piece.

*Betula* sp. (xx). Large piece 60mm diameter and 98mm long. c. 33 years grown, no bark.

*Populus/Salix* sp. (x).

*Prunus* sp. (x).

*Pomoideae* (x).

#### Finds of uncertain status

- 1 B01. Wt. 180g. RE 23 (BC/NB). Seventeen sherds from a BB1 jar rim and neck with strongly everted rim and with obtuse lattice zone with groove above, heavily sooted. Cf. Gillam (1976) nos 9–12, mid third to mid fourth-century. c. A.D. 260–330.
- 2 F02. Wt. 22g. RE 15 (BC/NB). A Nene Valley colour-coated ware simple funnel-necked beaker. Cf. Gillam (1970) no. 53, A.D. 260–320. c. A.D. 250–300.

**Interpretation** Redeposited pyre debris.

### 208 1966/6 PHASE 3

Plan FIG. 4.149; details FIG. 4.174.

**Description** Records limited. No pit appears to have been identified. Vessels separated by sandstone slab with small sandstone slab covering dish (3). Unurned cremated bones to NW of vessels. Deposit adjacent to large boulder.

**Cremated human bone** Adult (19–100 years); female?? Wt. 40.5g.

#### Pyre goods

- 1 B01. Wt. 225g. RE 33, BE 36 (B66/6). Two rimsherds and three joining base sherds from a developed beaded-and-flanged bowl, exterior decorated with intersecting arcs, fairly heavily burnt. c. A.D. 270–350.

#### Grave goods

- 2\* B01. Wt. 535g. RE 87, BE 100. A complete simple-rimmed dish with flat base, wall decorated with low intersecting arcs and base decorated with intersecting circles. Not burnt or sooted. c. A.D. 200–350.
- 3\* O01. Wt. 550g. RE 100, BE 100 (B66/4). A necked jar with fairly constricted neck and everted rim with cordoned shoulder. The fabric and form have parallels in the North-West at sites such as Walton-le-Dale and Lancaster. Cf. Gillam (1970) type 28, A.D. 120–170. Second to third-century.

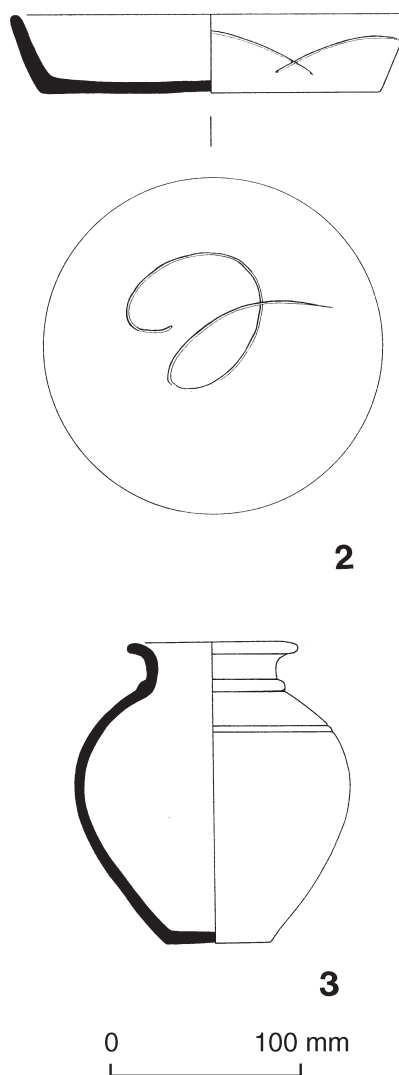


FIG. 4.174 Pottery from vessel deposit 208.

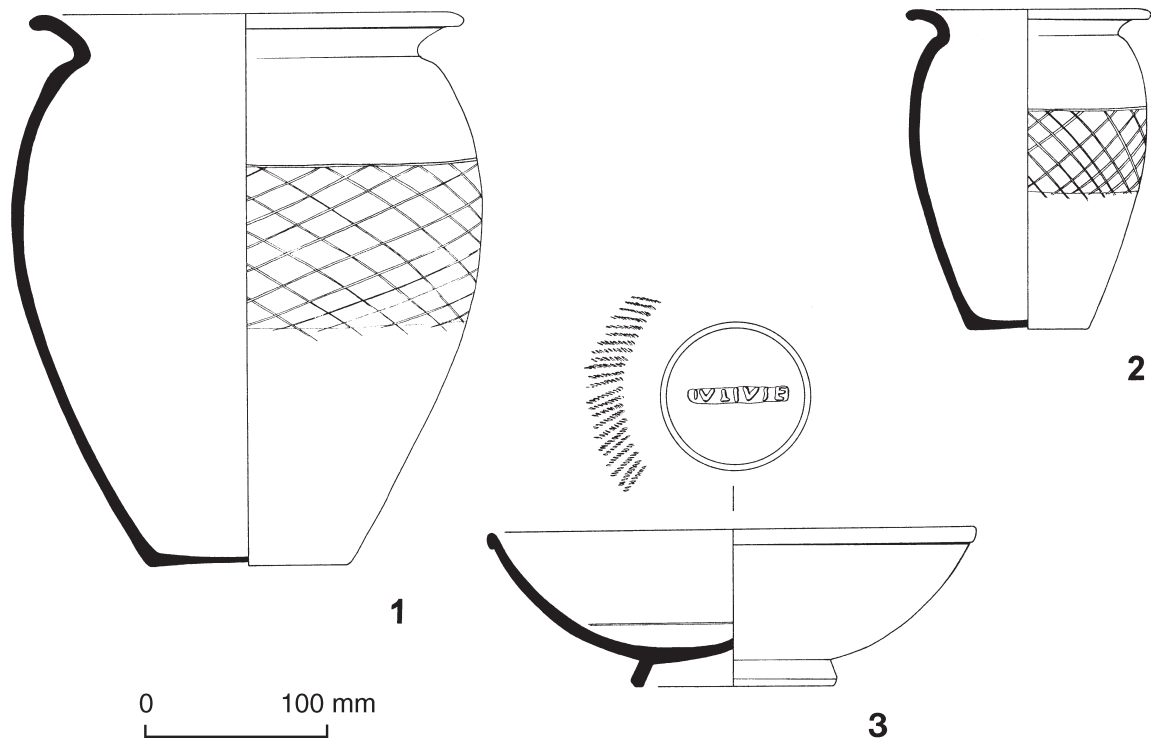


FIG. 4.175 Grave goods from urned cremation burial 209.

**Finds of uncertain status**

- 4 O01. Wt. 2g. RE 2 (B66/4). A small fragment from a jar rim, probably north-western. Perhaps second to third-century.

**Interpretation** Vessel deposit, or 'memorial', or unurned cremation burial?

**209 1966/7 PHASE 2**

Plan FIG. 4.149; details FIG. 4.175; see also FIG. 8.16.

**Description** Records limited. Possibly a circular pit of c. 0.7m diameter. Dish (3) placed over mouth of (1). Cremated bone assumed to have been inside jar (1) but not explicitly stated to have been.

**Cremated human bone** Adult (35–45 years); female. Wt. 343.4g.

**Grave goods**

- 1\* B01. Wt. 1875g. RE 85, BE 100 (B66/8). A largely complete BB1 jar with an everted rim of smaller diameter than the maximum girth with an obtuse lattice zone on the girth with a groove above. Sooted and some sherds burnt. Cf. Gillam (1976) no. 9, mid to later third-century. c. A.D. 250–270.
- 2\* B01. Wt. 525g. RE 100, BE 100 (B66/8). A complete BB1 jar with everted rim of similar diameter to the maximum girth with an obtuse lattice zone on the girth with a groove above. There is an apparently deliberate hole punched in the lower jar wall, presumably from a ritual rendering of

the vessel unfit for use. Base burnt. Cf. Gillam (1976) no. 10, later third-century. Perhaps c. A.D. 260–280. (FIG. 8.16).

- 3\* S30. Wt. 850g. RE 100, BE 100. Form 31R, complete, stamped IVLVSE (Iulius viii Die 3h). This Iulius worked at Waiblingen-Beinstein, subsequently moving to Rheinzabern, where he produced the bulk of his output. Stamps from this die have been found at Rheinzabern. Stamps from other dies occur at Niederbieber (several times) and the style of his decorated ware suggests a date in the third century. This is confirmed by the presence of his work in a third-century kiln at Rheinzabern (Reutti 1983, 56). Footring unworn.

**Interpretation** Urned cremation burial.

**210 1966/37 UNPHASED**

Plan FIG. 4.149.

**Description** Records limited. Long cist (minimum 1.07 x 0.4m; major axis NW/SE). Not fully excavated.

**Interpretation** Inhumation burial.

**211 1966/41 UNPHASED**

Plan FIG. 4.149; details FIG. 4.176.

**Description** Records limited. No pit recognised. Jar (1) with (2) inverted over it as lid, wedged with stones. No bone recorded or extant in archive.



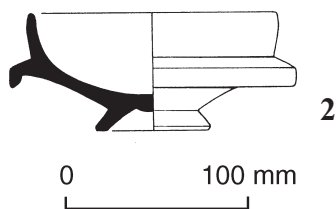


FIG. 4.176 Form 38 from deposit 211.

**Grave goods**

- 1 Jar – missing
- 2\* S30. Wt. 400g. RE 100, BE 100. Two large fragments and four small chips give a complete small bowl of form 38, East Gaulish, but the source cannot certainly be given more precisely. There was never a potter's stamp. Origin at La Madeleine in its latest phase might not be impossible, however, and it is worth noting that La Madeleine bowls of the form were not stamped. The bowl was made in the second half of the second century, but the footring is well worn.

**Interpretation** Uncertain.

**212 1966/42 UNPHASED**

Plan FIG. 4.149.

**Description** Records limited. Described as 'wrecked'.

**Interpretation** None possible.

**213 1966/13 PHASE 2**

Plan FIG. 4.149; details FIG. 4.177.

**Description** Records limited. Pit not defined, deposit placed to W of erratic. Original records describe one red and one black 'cooker', one samian and one Rhenish beaker. Archive includes *two* BB1 jars. Beaker (6) found inside (5). Position of cremated bones not stated.

**Cremated human bone** Adult (25–40 years); female. Wt. 618.4g (including 3g animal bone). Pathology: op – costo-vertebra, T.

**Charcoal** Noted in cremated bone.

**Pyre goods**

- 1 Glass; vessel. Blue/green melted lump (5g), probably from this burial.
- 2 Glass; bead. Melted now spherical. Cloudy deep blue. Dimensions 3 x 3 x 3mm, probably from this burial.

**Grave goods**

- 3\* B01. Wt. 845g. RE 59, BE 100. A largely complete BB1 jar with everted rim not exceeding the diameter of the girth. The obtuse lattice zone has a groove above, wall and rim sooted, twelve sherds burnt. Cf. Gillam (1976) nos 9–10, mid to later third-century. *c.* A.D. 240–260.
- 4\* B01. Wt. 750g. RE 17, BE 84. A BB1 jar, described as 'almost complete' although most of the rim is now missing, with everted

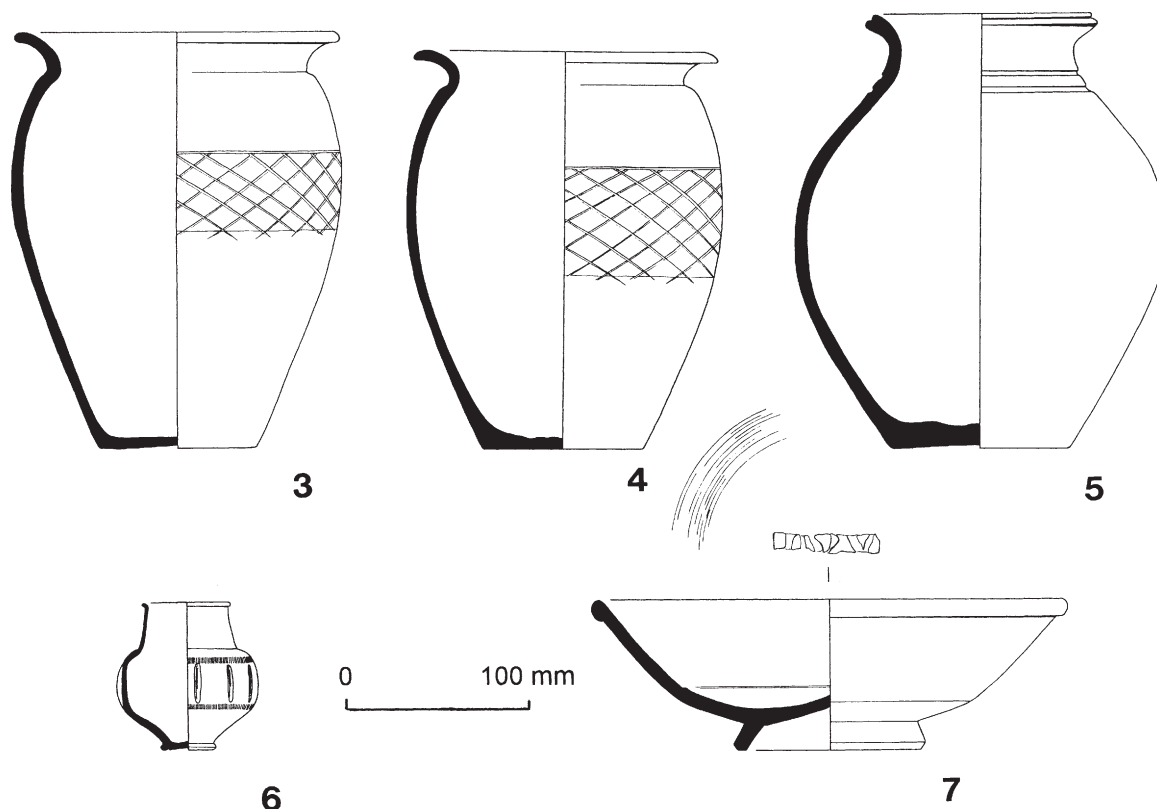


FIG. 4.177 Grave goods from possible urned cremation burial 213.

- rim, of lesser diameter than the maximum girth, with obtuse lattice zone (without groove). Cf. Gillam (1976) no. 8, mid third-century. Perhaps early to mid third-century.
- 5\* O01. Wt. 900g. RE 85, BE 100. A complete oxidised constricted-necked jar with bifid rim. Similar forms were made at Walton-le-Dale and Wilderspool in the early to mid third century (Evans and Rátkai forthcoming a). c. A.D. 170–260. (FIG. 8.15).
- 6\* F01. Wt. 80g. RE 100, BE 100 (B66/11). A complete small, globular-necked, indented beaker in Trier Rhenish ware. Cf. Gillam (1970) type 45, A.D. 190–250. c. A.D. 200–260.
- 7\* S20. Wt. 775g. RE 100, BE 100 (B66/11). Form 31R, complete, with heavily worn footring, Central Gaulish. The stamp, otherwise unknown, reads LL \ /, or the like, and is certainly illiterate. Mid to late-Antonine.

#### Finds of uncertain status

- 8 B01. Wt. 155g. RE 43, BE 41 (B66/13). Two joining sherds from a BB1 simple-rimmed dish with intersecting arc decoration on exterior. c. A.D. 200–350.
- 9 S20. A small rim fragment of form 31, ?Central Gaulish. Antonine.
- 10 Lead alloy; formless fragment.

**Interpretation** Uncertain, possibly urned cremation burial.

#### 215 1966/27 UNPHASED

Plan FIG. 4.149; details FIG. 4.178.

**Description** Records limited. A three-sided feature interpreted initially as square box (1.4 x 0.79m), edges of feature had 'heavily burnt material' with traces of similar centrally.

**Cremated human bone** Adult (18–100 years) unsexed. Wt. 205g (including copper alloy fused to rib shaft, copper alloy and iron fused to femur shaft, iron hobnail fused to femur shaft; 82.8g animal bone and 9g worked bone).

**Cremated animal bone** Horse, sheep/goat, dog. (FIG. 7.2).

#### Pyre goods

- 1\* Copper alloy; rings, two complete, also fragments. 1a) diameter 33mm, 1b) diameter 20mm.
- 2\* Copper alloy; binding riveted fragments (18). Max W. 9mm.
- 3\* Copper alloy; sheet and other fragments (12).
- 4\* Copper alloy; ?scabbard chape. L. 28mm, W. 19mm.

- 5\* Copper alloy; mount (3 fragments). L. 26mm, W. 13mm.
- 6\* Copper alloy; rim fragment. L. 84mm.
- 7 Copper alloy; rim fragment.
- 8 Copper alloy; handle, fragmented.
- 9 Iron; hobnail adhering to cremated bone.
- 10 Iron; nail (18 plus fragments).
- 11\* Bone veneer type: ?A7 (FIG. 4.178, nos 11b–c); C1.4 (FIG. 4.178, no. 11a).
- 12\* Bone; bead. L. 13mm, diameter 10mm.
- 13 Antler; plug fragment.

**Interpretation** Uncertain, probably redeposited pyre debris though see p. 394 for consideration as a possible casket burial.

#### 216 1966/8 UNPHASED

Plan FIG. 4.149.

**Description** Records limited. Pit, adjacent to large boulder.

**Cremated human bone** Adult (18–100 years); unsexed. Wt. 32.1g (including 0.6g worked bone).

#### Pyre goods

- 1 Bone veneer type: E2.1.
- 2 Bone ?handle fragment with four transverse grooves flanked on either side by diagonal grooves.

**Interpretation** Redeposited pyre debris.

#### 217 1966/9 UNPHASED

Plan FIG. 4.149; details FIG. 4.179.

**Description** Records limited. 'Squarish' pit with sandstone slab on one side, possibly with depression in base. Deposit adjacent to large boulder.

**Cremated human bone** Adult (30–45 years); male? Wt. 138.9 (including 32.8g animal bone and 2g worked bone).

**Cremated animal bone** Horse; sheep/goat, domestic chicken.

**Charcoal** *Quercus* sp. (xx). Narrow roundwood seven years+ growth. Stake.  
*Alnus* sp. (xx).  
Indeterminate (x).

#### Pyre goods

- 1\* Copper alloy; escutcheon, duck-shaped. L. 28mm, W. 18mm.
- 2\* Copper alloy; strainer, perforated sheet fragment. L. 39mm, W. 9mm.
- 3\* Copper alloy; cast fragment, possibly from a chape. L. 29mm, W. 20mm.
- 4 Copper alloy; ribbed sheet fragments (4), also five other fragments (including 2 molten ones).

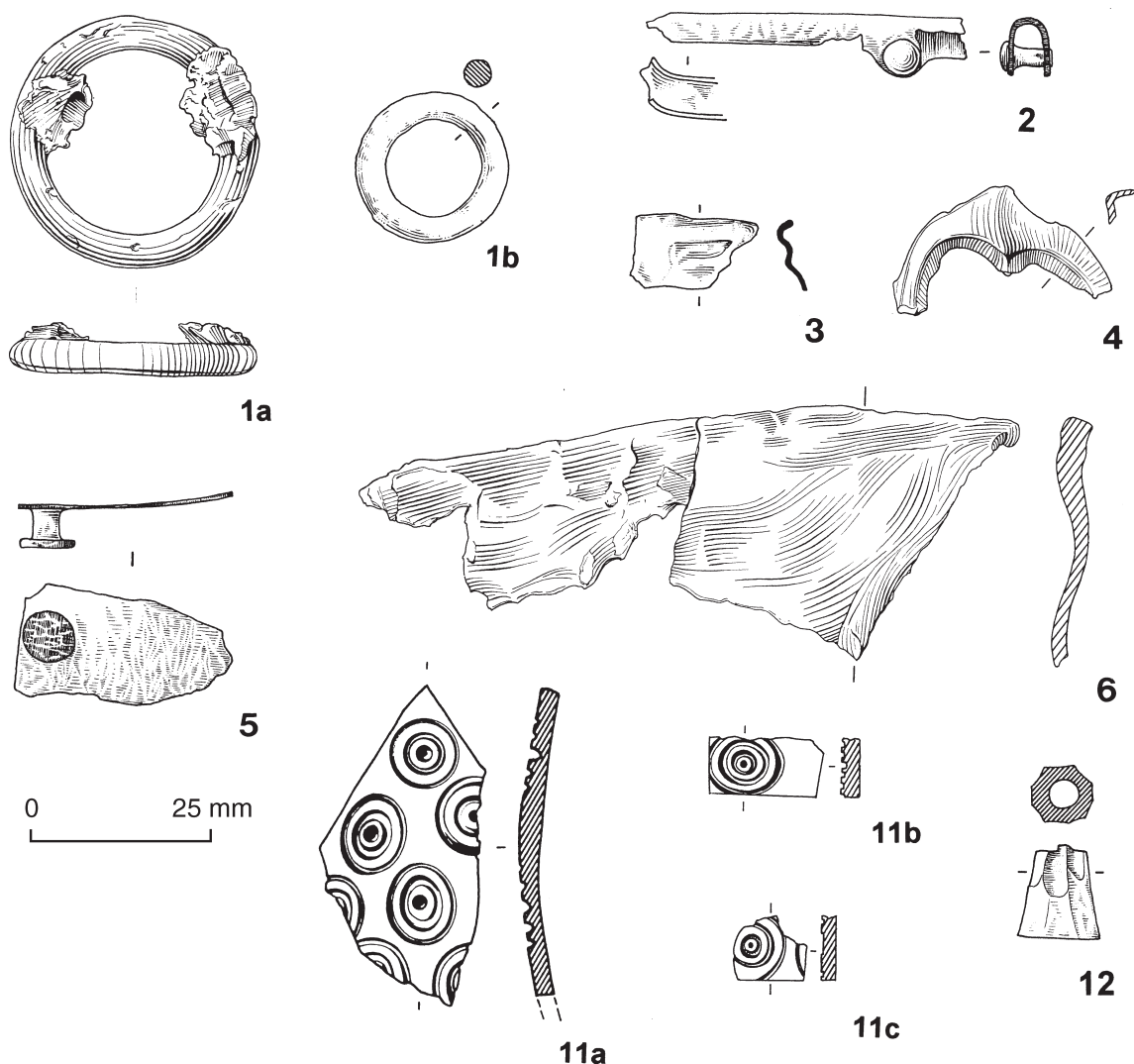


FIG. 4.178 Pyre goods from deposit 215.

- 5 Iron; nail (12).  
 6 Iron; miniature bucket-shaped pendant found in charcoal sample. Diameter 13mm, Ht. 21mm.  
 7 Lead alloy; rectangular sheet 4–6mm thick, originally nailed along one edge, corners folded. L. 360mm, W. 255mm.  
 8\* Bone veneer types: A4.1; A5.4; A7.7 (FIG. 4.179, no. 8a); E2.1 (FIG. 4.179, no. 8c).

See also oak stake in charcoal.

**Interpretation** Redeposited pyre debris.

## 218 1966/23 PHASE 2

Plan FIG. 4.149; details FIG. 4.180.

**Description** Records limited. Jar (1) described as 'loose in soil'.

**Cremated human bone** Adult (30–100 years); unsexed. Wt. 245g.

**Cremated animal bone** Cattle.

## Grave goods

- 1\* R03. Wt. 415g. RE 74, BE 46. The complete profile and most of a BB-copy jar with everted rim, not of greater diameter than the maximum girth, with obtuse lattice zone with groove above, sooted. Cf. Gillam (1976) nos 7–9, third-century. Perhaps c. A.D. 240–270.

## Finds of uncertain status

- 2 O01. Wt. 12g. RE 11. A constricted-necked jar with a hooked rim probably north-western. Second to third-century.  
 3\* W02. Wt. 46g. RE 28. A constricted-necked jar rim with everted rim in Nene Valley parchment ware. Second to fourth-century.  
 4 W02. Wt. 2g. A small bodysherd in whiteware with red painted decoration, probably Nene Valley. Second to fourth-century.  
 5 R01. Wt. 13g. RE 8. A groove-rimmed dish, probably a BB copy. Perhaps Hadrianic to Antonine.



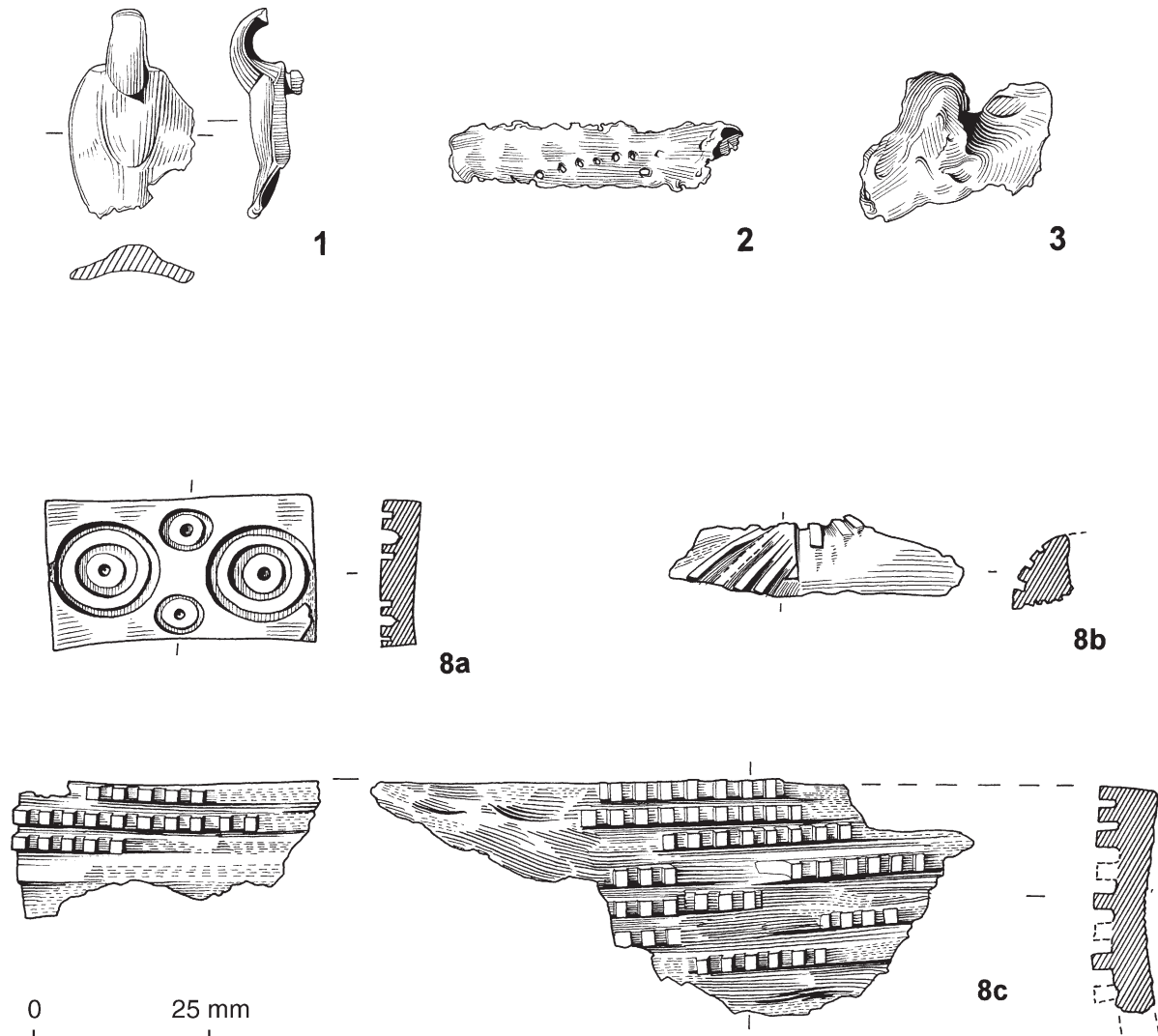


FIG. 4.179 Pyre goods from deposit 217.

6 R01. Wt. 63. Three jar bodysherds.

7 B01. Wt. 11g. Two BB1 bodysherds.  
Hadrianic to mid fourth-century.

**Interpretation** Uncertain but assumed to be urned cremation burial.

## 219 1966/40 PHASE 3

Plan FIG. 4.149; details FIG. 4.181.

**Description** Records limited. Described as 'pot with some bone' and photographs show cremated bone inside jar (4).

**Cremated human bone** Infant (3–4 years); unsexed. Wt. 77.8g (including 5.4g worked bone).  
Adult (18–100 years); unsexed.

### Pyre goods

1\* Bronze; brooch, Surviving length 32mm. Badly damaged fragment of a T-shaped brooch. It was probably hinged since there appears to be an iron axial rod. It may have

had a projection from the head, a narrow moulding at the waist of the bow and perhaps a triangular foot. These are characteristics of later first to second-century brooches. (SB).

Result of a qualitative energy dispersive X-ray fluorescence (XRF) analysis. Bronze. (JB).

2 Copper alloy; sheet fragments.

3\* Bone veneer types: A1.1; A5.4; F.

### Grave goods

4\* B01. Wt. 675g. RE 75g, BE 100. A complete BB1 jar except for a part of the rim and a hole in the vessel side which probably results from deliberate damage. The rim is everted and has a greater diameter than the maximum girth which is decorated with an obtuse lattice zone with a groove above, exterior wall sooted. Cf. Gillam (1976) nos 12–14, early to mid fourth-century. c. A.D. 270–350. (FIG. 2.3).

**Interpretation** Urned dual cremation burial.

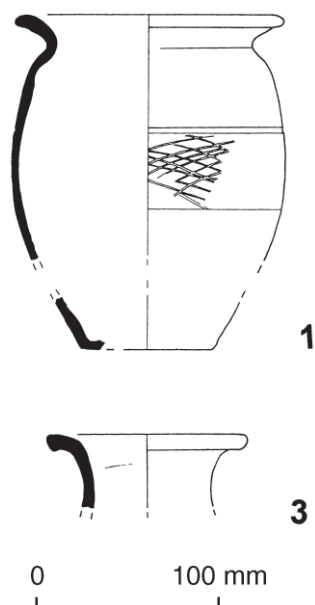


FIG. 4.180 Urn and pottery from probable urned cremation burial 218.

## 220 1966/CREM 2 PHASE 2

Plan FIG. 4.93; details FIG. 4.182.

**Description** Records limited, position of (1) marked on plan. Material described as being 'loose in topsoil'.

**Cremated human bone** Adult (18–25 years) female?? Wt. 85.7g.

### Finds of uncertain status

- 1\* Gold; earring. Ring of gold circular-sectioned wire with overlapping terminals. The ends run parallel before winding around each other to provide a sliding knot fastening. Diameter 11mm, thickness 1mm.

Previously published as Allason-Jones 1989a, 45, no. 7.

As an earring in its own right this type (Allason-Jones 1989a, type 3) has a long history beginning in pre-Roman times and continuing in post-Roman. It also appears as the linking element on composite earrings such as the 'Hercules' club' type (see Appendix 4). It is probable that the wire was threaded through the pierced ear and the ends twisted to provide a semi-permanent earring to be worn alone or with pendants attached. (LA-J).

- 2\* BO1. Wt. 448g. RE 30, BE 93. Four BB1 jar rim sherds, all burnt, 19 bodysherds heavily burnt orange, four unburnt. c. A.D. 200–260.

- 3 BO1. Wt. 18g. RE 10. A BB1 everted rim jar rim fragment. Probably third-century

**Interpretation** Uncertain.

## 221 1967/28 UNPHASED

Plan FIG. 4.93; details FIG. 4.183.

**Description** Records limited. Disturbed by machine, burnt soil and cobbles noted.

**Cremated human bone** Juvenile–adult (8–100 years); unsexed. Wt. 6.1g (including 1.5g animal bone). Iron-staining on bone.

**Cremated animal bone** Sheep/goat.

### Pyre goods

- 1\* Copper alloy; jug/flask rim fragment.  
2\* Copper alloy; strainer, perforated sheet fragment. L. 21mm, W. 19mm.  
3\* Copper alloy; ring fragment.  
4 Copper alloy; sheet fragments (13), one burnt. Rivet. Also one other fragment found in cremated bone.

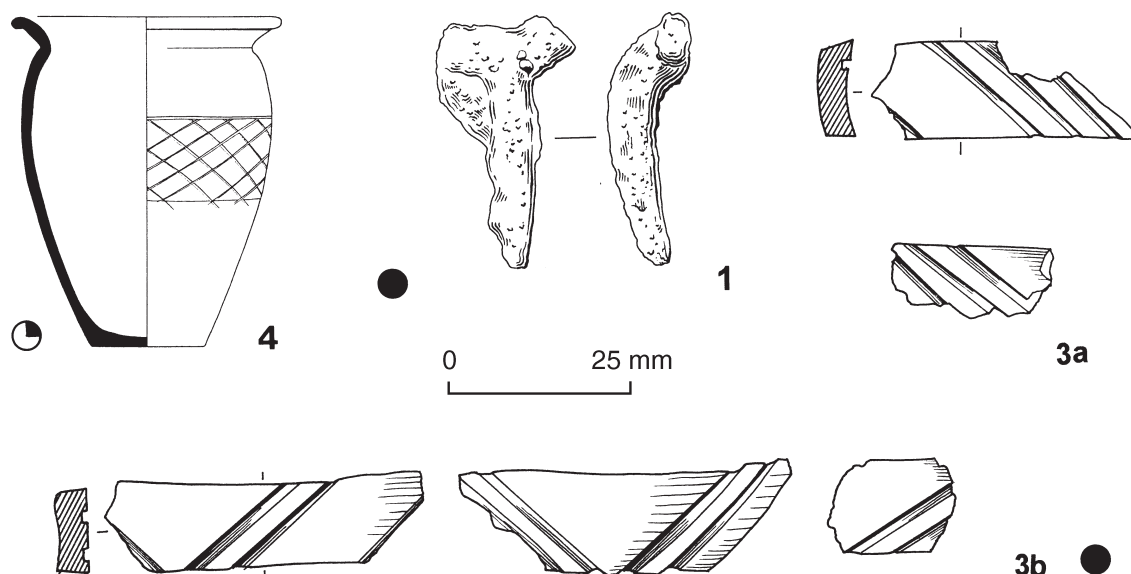


FIG. 4.181 Pyre goods and urn from urned cremation burial 219.

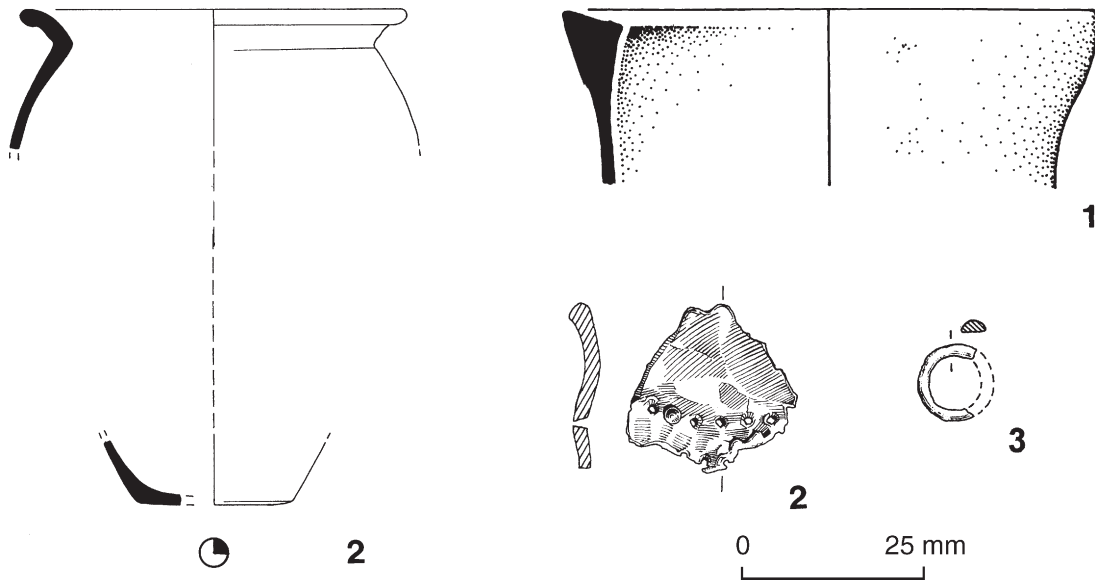


FIG. 4.183 Pyre goods from possible pyre debris deposit 221.

- 2 Iron; nail (2) found in cremated bone.
- 3 Iron; nail (2 fragments).
- 4 Bone veneer types: A1.1; A5.3; C2.1.

#### Grave goods

- 5\* B01. Wt. 550g. RE 39, BE 100 (BC/CG). A complete profile from a BB1 jar with an everted rim; with a diameter exceeding the maximum girth, with an obtuse lattice zone on the girth with a groove above it. Many of the girth and lower wall sherds are burnt. Cf. Gillam (1976) nos 10–11, later third to early fourth-century. Possibly c. A.D. 270–330.

#### Finds of uncertain status

- 6 B01. Wt. 23g. RE 10. Two rimsherds from a simple-rimmed dish, undecorated. A.D. 200–350.

**Interpretation** Urned cremation burial, probably with redeposited pyre debris in fill.

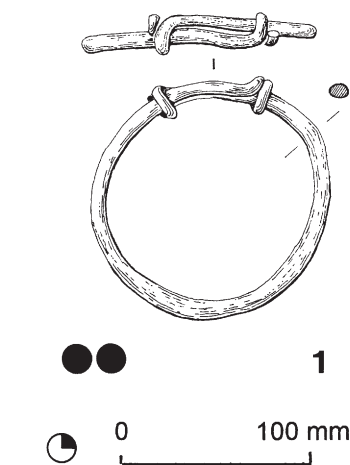


FIG. 4.182 Finds from deposit 220.

- 5 Iron; hobnail (from cremated bones).
- 6 Iron; nail (fragment).
- 7 Iron; nail, burnt fragment found in cremated bone.

**Interpretation** Uncertain, pyre debris present, burning suggests pyre site but no evidence of extent.

#### 222 1967/30 PHASE 3

Plan FIG. 4.93; details FIG. 4.184.

**Description** Records limited. Circular pit (diameter 0.61m). Truncated by machine. Cremated bone in (5).

**Cremated human bone** Adult (35–100 years); unsexed. Wt. 410.4g (including 6.2g worked bone). Pathology: ddd – S1; exo – patella.

#### Pyre goods

- 1 Copper alloy; one fragment found in cremated bone also two other fragments.

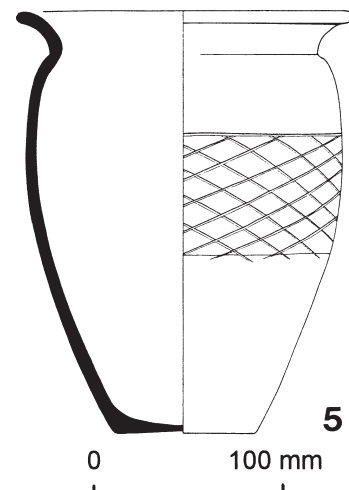


FIG. 4.184 Urn from urned cremation burial 222.

**223 1967/31 PHASE 1**

Plan FIG. 4.93; details FIG. 4.185.

**Description** Records limited. Rectangular pit (0.91 x 0.61m), excavator suggested presence of box from dark staining and recorded there was a 'pattern of nails' but what this was is not stated.

**Cremated human bone** Subadult–adult (13–100 years); unsexed. Wt. 2.7g (including 0.9g worked bone).

**Pyre goods**

- 1\* Copper alloy; handle. Diameter 10mm, L. 40mm.
- 2 Copper alloy; sheet fragments (11) distorted by heat.
- 3 Iron; hobnail (12 including 1 burnt).
- 4 Iron; nail (9 plus fragments).
- 5 Bone veneer type: A2.
- 6 Bone worked fragment.

**Finds of uncertain status**

- 7 W02. Wt. 15g. Four bodysherds with red painted lines, perhaps Nene Valley parchment ware. Second to fourth-century.
- 8 F01. Wt. 1g. (BC/CR). A Trier Rhenish ware bodysherd. c. A.D. 200–260.
- 9 S30. Wt. 7g. (BC/CR). Dish or bowl fragment, in Trier fabric. Late second to third-century.

**Interpretation** Uncertain, deposit includes redeposited pyre debris.

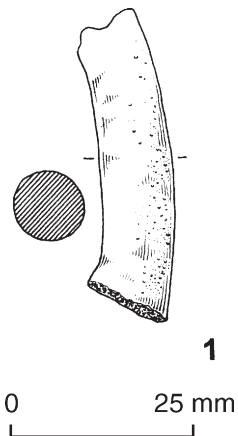


FIG. 4.185 Pyre goods from possible pyre debris deposit 223.

**224 1967/35 PHASE 2**

Plan FIG. 4.93; details FIG. 4.186.

**Description** Records limited. Circular pit (0.51m diameter). Some cremated bone discarded on site.

**Cremated human bone** Subadult–adult (13–100 years); unsexed. Wt. 5.8g (including 0.1g worked bone).

**Charcoal** *Betula* sp. (xx).

*Corylus* sp. (xx).

*Alnus* sp. (x).

**Pyre goods**

- 1 Iron; hobnail.
- 2 Iron; nail (2 plus fragments).
- 3 Bone veneer types: A3.2; A5.4.

**Finds of uncertain status**

- 4 B01. Wt. 91g. RE 2 (BC/CK). Fourteen fragments from the rim and shoulder of a BB1 jar with obtuse lattice zone with a groove above, sooted. c. A.D. 240–350.
- 5\* S30. Wt. 95g. RE 30 (BC/CL). A large fragment of form 31 (Sa), East Gaulish (Rheinzabern). Probably third-century.

**Interpretation** Uncertain.

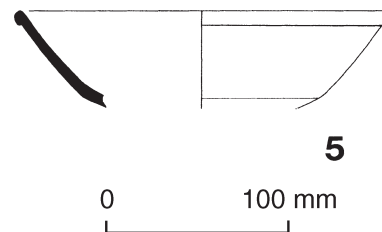


FIG. 4.186 Form 31 from deposit 224.

**225 1967/34 UNPHASED**

Plan FIG. 4.93.

**Description** Records limited: circular pit (diameter 0.61m).

**Cremated human bone** Subadult–adult (13–100 years); unsexed. Wt. 14.2g (including 1.9g animal bone).

**Cremated animal bone** Large ungulate.

**Pyre goods**

- 1 Copper alloy; sheet fragments (4).
- 2 Iron; hobnail (2).
- 3 Iron; nail; one found in cremated bone, also one other.
- 4 B01. Wt. 25g. (BC/CI). Eight BB1 bodysherds, burnt and sooted, some with obtuse lattice. Third to mid fourth-century.

**Uncertain** Possibly redeposited pyre debris.

**226 1967/36 UNPHASED**

Plan FIG. 4.93; details FIG. 4.187.

**Description** Records limited. Cist, sandstone slabs broken (0.91 x 0.61m).

**Cremated human bone** Subadult–adult (13–100 years); unsexed. Wt. 7.5g.

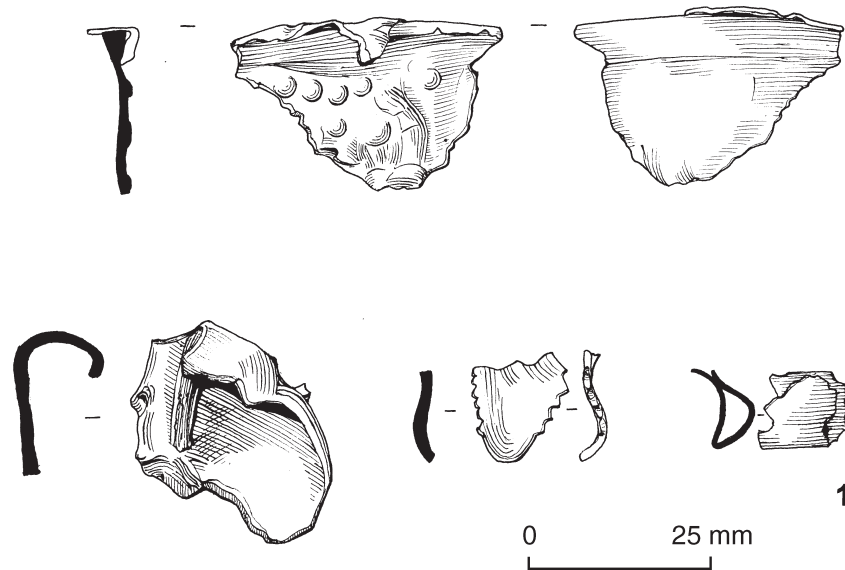


FIG. 4.187 Pyre goods from possible pyre debris deposit 226.

**Pyre goods**

- 1\* Copper alloy; sheet fragments (1 decorated, 5 plain).  
 2 Iron; strap or blade, disintegrated.  
 3 Iron; nail (2).

**Grave goods**

- 4 B01. Wt. 7g. (BC/CW). A BB1 bodysheer, Hadrianic to mid fourth-century.

**Interpretation** Uncertain, possibly redeposited pyre debris.

**227 1967/117 PHASE 2**

Plan FIG. 4.93; details FIGS 4.188, 4.189; see also FIG. 3.10.

**Description** Complex grave pit with cist in SE corner with cist walls placed on bone and charcoal layer (pit: 1.14 x 0.93m; major axis N/S; cist: 0.65 x 0.53m; major axis W/E). Organic lining around all walls of pit described as 'dark charcoal stains', nails had been hammered through this and into the wall of the pit, especially at the corners. Excavator believed the pit had been lined with basketry. A 'carved stone' was noted, and was drawn as being placed in the N wall of the pit and covered by lining. This does not survive in the archive and no further records were made of it. The deposit was excavated as three separate burials. Pit (original number 1967/117), cist (original number 1967/132), and SW corner with small sandstone slabs to W and E (original number 1967/150). Fill of pit to N (1967/117): dark sandy soil with scatterings of bone and charcoal. Fill of cist (1967/132): dense black charcoal and sand. Cremated bone from (14), also some cremated bone recovered in fill. Bone (17) placed on dish (16). Fill of SW corner (1967/150) described as 'very dark'.

**Cremated human bone** Six groups from two individuals cremated separately, one individual represented by (i); (ii)–(vi) could all be from second individual. (i) from jar (14), (ii) from dish (16), (iii) and (iv) from fill of cist (1967/132), (v) from fill of northern part of pit (1967/117), (vi) from SE corner (1967/150). (FIG. 6.4).

- (i) Adult (40–100); male?? Wt. 80.1g. Pathology: exo – iliac and ischial crests.  
 (ii) Adult (18–100 years); unsexed. Wt. 20g (including 0.9g worked bone).  
 (iii) Adult (18–100 years); unsexed. Wt. 29.7g (including melted glass fused to bone, 1g worked bone).  
 (iv) Adult (18–100 years); unsexed.  
 (v) Adult (18–100 years); unsexed. Wt. 45.3g (including 1.2g worked bone).  
 (vi) Subadult–adult (15–100 years); unsexed. Wt. 7.4g (including 0.2g worked bone).

**Charcoal** Four samples (i) from pit fill 1967/117, (ii) and (iii) from fill of 1967/132, (iv) from fill of jar (15).

- (i) *Betula* sp. (xxx).  
*Quercus* sp. (xx). Fast growing.  
*Alnus* sp (x).  
 (ii) *Corylus* sp. (x).  
*Betula* sp. (x).  
 (iii) *Betula* sp. (x).  
*Alnus* sp (x).  
 (iv) *Fraxinus* sp. (x).  
*Betula* sp. (x).

**Pyre goods**

- 1\* Copper alloy; bead, gadrooned. From SE corner fill 1967/150. Diameter 16mm, L. 13mm.  
 2 Iron; small nail, burnt, from charcoal sample. From cist fill 1967/132.



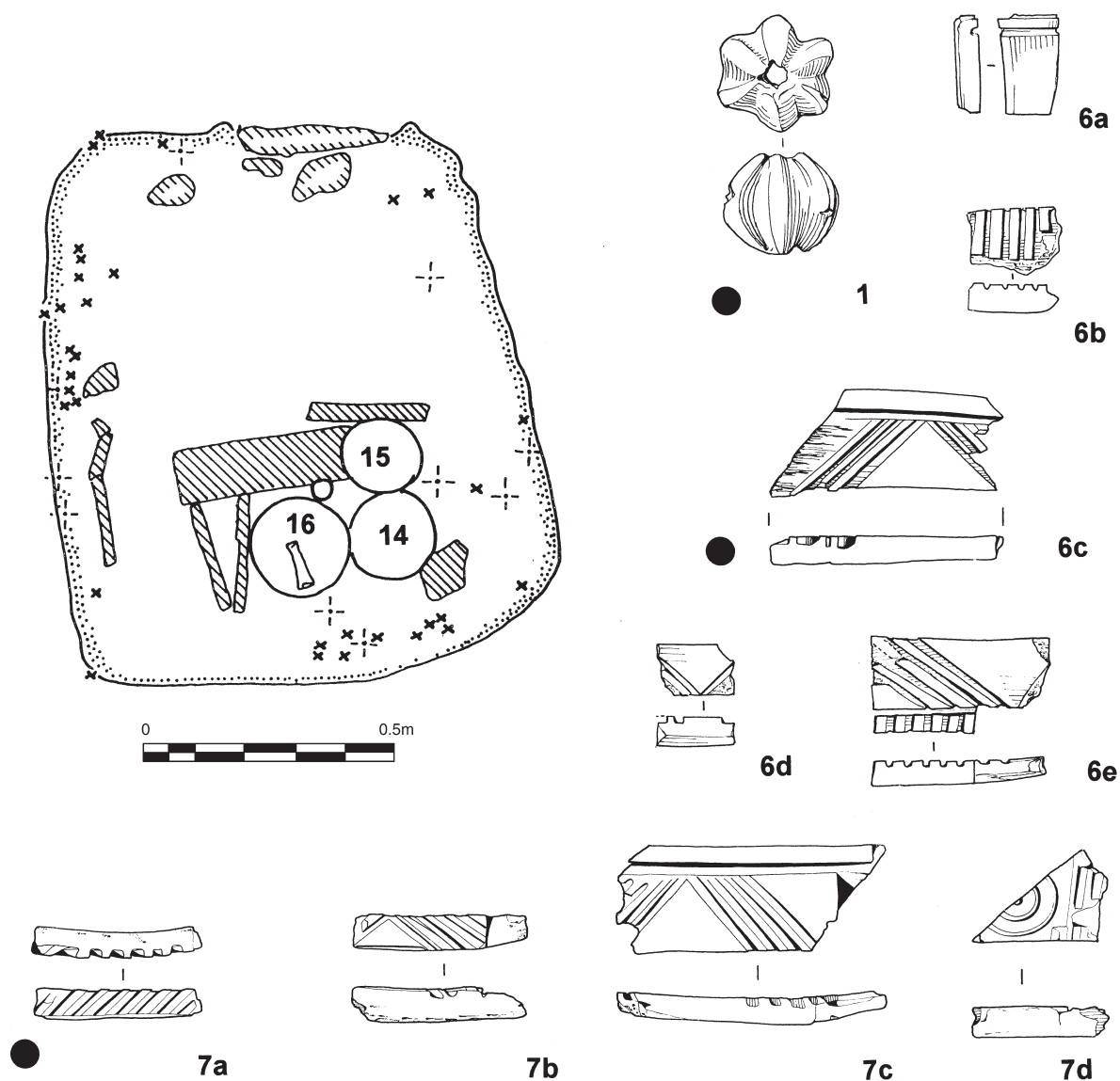


FIG. 4.188 Plan and pyre goods from urned cremation burial 227.

- 3 Iron; nail (4 including fragments). From cist fill 1967/132.
- 4 Iron; miniature bucket pendant with copper-alloy brazing internally and externally. Burnt. Burnt organic material internally, not identifiable. From cist fill 1967/132. Diameter 10mm, Ht. 13mm.
- 5 Iron; nail (fragment). From SE corner fill 1967/150.
- 6\* Bone veneer types from 1967/117: A3.1 (FIG. 4.188, nos 6a–b); A5.5 (FIG. 4.188, no. 6c); A5.6 (FIG. 4.188, no. 6e); B1.1; B3.
- 7\* Bone veneer types from 1967/132: A4.1 (FIG. 4.188, no. 7a); A4.2; A5.5 (FIG. 4.188, no. 7c); A5.6; A7 (FIG. 4.188, no. 7d); B1.1; B2; C2.1.
- 8\* Glass; bath-flask; one rim, neck and handle fragment, one body fragment and one base fragment. Blue/green; many small bubbles; strain-cracks. Out-bent rim, edge rolled in unevenly; short cylindrical neck curving out to almost horizontal shoulder; thin-walled convex-curved body and base part of one dolphin handle applied to shoulder, trailed up neck and underside of rim, looped over and down and trailed back up to rim; second handle represented by scar on underside of rim. Circular pontil scar. Slightly heat-affected. Present Ht. (rim) 9mm, (base) 22mm; rim diameter 11mm, base diameter 10mm, wall thickness 0.5mm, pontil scar diameter 7mm. From fill of, or over, 1967/132.
- 9 B01. Wt. 51g. BE 11. Ten sherds from a BB1 jar including one base sherd, all burnt. Hadrianic to mid fourth-century. From pit fill 1967/117.
- 10 B01. Wt. 115g. BE 21 (BC/JJ, layer 2). Two base sherds and 19 bodysherds from a BB1

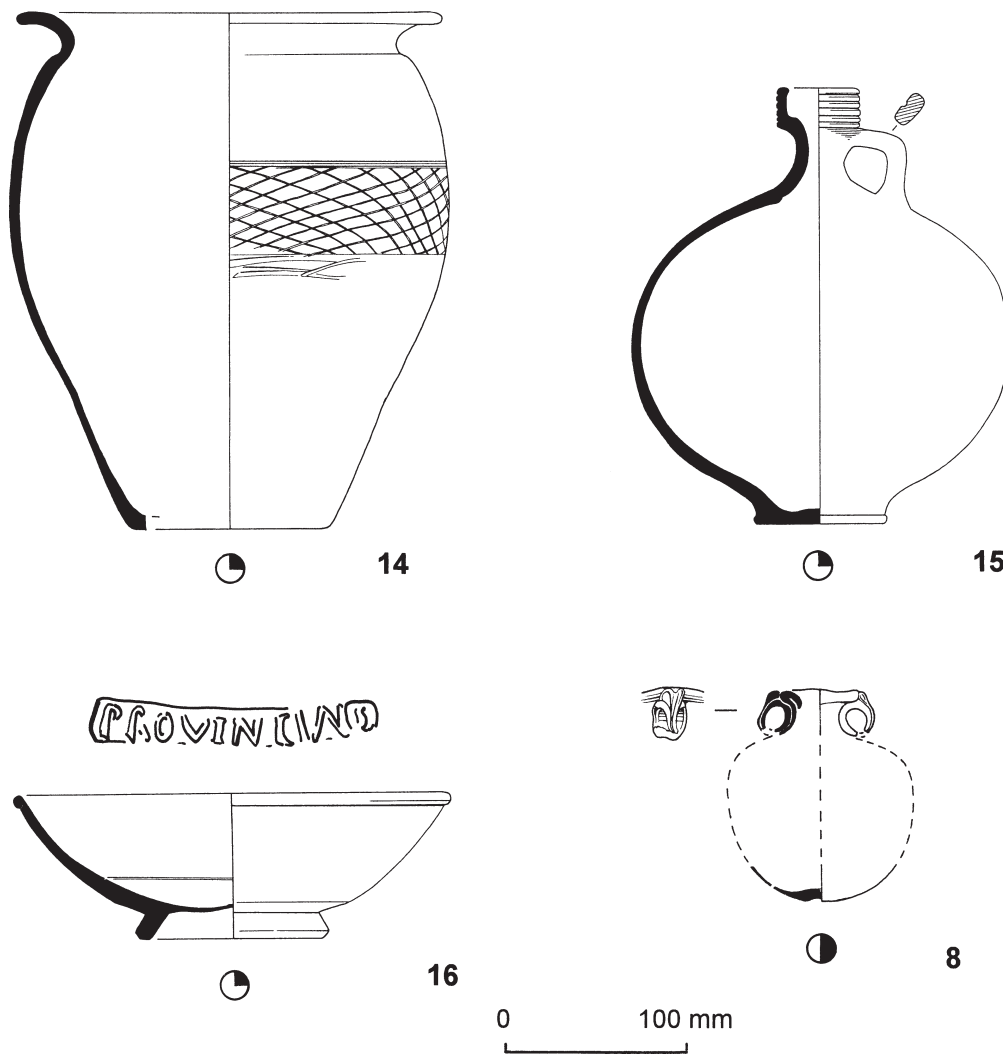


FIG. 4.189 Pyre and grave goods from urned cremation burial 227.

- jar with obtuse lattice zone with groove above. Many sherds are heavily burnt. *c.* A.D. 240+. From pit fill 1967/117.
- 11 B01. Wt. 2g. (layer 1, BC/IV). Three rimsherds from a BB1 jar and one bodysherd with obtuse lattice which might be from the same vessel. The rimsherds show some evidence of slight burning, rim sooted. *Cf.* Gillam (1976) nos 9–10, mid to later third-century. *c.* A.D. 250–300. From fill of 1967/132.
- 12 B01. Wt. 73g. (BC/IZ). Two BB1 jar rimsherds, sooted. *Cf.* Gillam (1976), nos 9–11, mid third to early fourth-century. *c.* A.D. 250–320. Also 22 bodysherds from the jar shoulder and girth, two bodysherds from the girth have obtuse lattice decoration with a groove above and are heavily burnt. The bodysherds might be from the same vessel as the rim. From cist fill of 1967/132.
- 13 B01. Wt. 8g. (BC/IY). A very burnt BB1 bodysherd. Hadrianic to mid fourth-century. From cist fill of 1967/132.

#### Grave goods

- 14\* B01. Wt. 1125g. RE 22, BE 35 (BC/IW). A BB1 jar, largely complete, with everted rim the diameter of which does not exceed the maximum girth and an obtuse lattice band on the girth with a groove above, sooted and some traces of limescale on the interior. Some sherds show evidence of burning on the girth. *c.* A.D. 240–270.
- 15\* F07. Wt. 875g. RE 100, BE 100 (BC/IY). A flagon (probably Hadham redware) with cupped rim and globular body.
- 16\* S30. Wt. 730g. RE 100, BE 100 (BC/IX). Ten fragments giving a complete form 31R (Sb/Sh), stamped PROVINCIALIS by Provincialis i (Die 2a). This dish is shallower than the Trier examples of the form which were found in the cemetery. It has traces of four lead rivets and the footring is moderately worn. The rouletting on the base is within the position of the footring. Provincialis worked at Rheinzabern,

making forms 31R and 32. Late second or third-century.

- 17 Leg of pork on dish (16).

#### Other finds

- 18 Iron; nail (60 includes 25 fragments). Some, if not all, of these were probably used to fasten the lining to the sides of the pit. From pit fill 1967/117.

#### Finds of uncertain status

- 19 O01. Wt. 22g. Four sherds from a jar/constricted-necked jar. Second to third century. From pit fill 1967/117.
- 20 B01. Wt. 325g. RE 57, BE 14 (BC/IF layer 1). Sherds from a BB1 jar with everted rim of smaller diameter than the maximum girth which has obtuse lattice zone with a groove above. Cf. Gillam (1976) no. 8, mid third-century. Some sherds heavily sooted. c. A.D. 240–270. From pit fill 1967/117.
- 21 Glass; c. 250 colourless strain-cracked body fragments from fill of 1967/132 (BC/IZ).

**Interpretation** Urned cremation burial of one individual with redeposited pyre debris derived from separate cremation of second individual.

#### 230 1967/110 PHASE 1

Plan FIG. 4.93; details FIG. 4.190.

**Description** Rectangular sandstone cist placed immediately to E of large erratic boulder (0.76 x 0.46m; major axis NW/SE). Fill: sandy brown soil with some charcoal.

**Cremated human bone** Subadult–adult (13–100 years); unsexed. Wt. 2.3g.

**Charcoal** *Betula* sp. (xx).  
*Alnus* sp. (x).

#### Pyre goods

- 1 Iron; nail (fragment).

#### Finds of uncertain status

- 2 Glass; fragments recorded in fill but not now identifiable.
- 3 B01. Wt. 1g. A BB1 bodysherd, Hadrianic to mid fourth-century.
- 4 S20. Wt. 1g. A Central Gaulish jar fragment. Antonine.

**Interpretation** Redeposited pyre debris.

#### 231 1967/118 UNPHASED

Plan FIG. 4.93.

**Description** Records limited. Pit (0.84 x 0.48m, 0.25m deep). Fill: brown sandy soil with a few bone and charcoal fragments.

**Cremated human bone** Subadult–adult (13–100 years); unsexed. Wt. 2.1g.

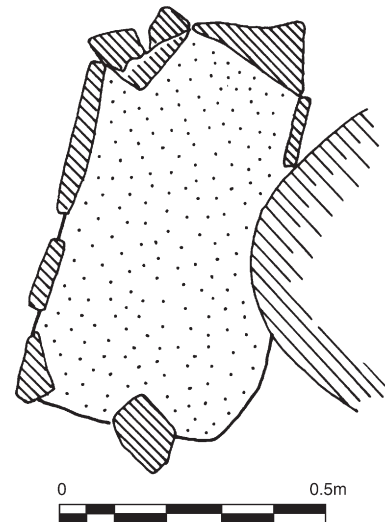


FIG. 4.190 Plan of pyre debris deposit 230.

**Interpretation** Uncertain, includes small quantity of redeposited pyre debris.

#### 232 1967/109 PHASE 2

Plan FIG. 4.93; details FIG. 4.191.

**Description** Trapezoidal sandstone cist. NB Discrepancy between drawn and written records. Drawn 0.76 x 0.61m; major axis W/E; written 0.91 x 0.66m, depth 0.41m. Fill: dark-brown sandy fill with fragments of bone and charcoal scattered throughout.

**Cremated human bone** Adult (21–100 years); unsexed. Wt. 54.3g (including 0.7g worked bone).

**Charcoal** *Betula* sp. (xx).

*Quercus* sp. (x). Fast growing.

#### Pyre goods

- 1 Iron; nail (2 including fragments).
- 2 Bone veneer type: A1.
- 3 B01. Wt. 20g. RE 10 (BC/HY). Two bodysherds and a jar rim in BB1, the bodysherds being heavily burnt. For the rim cf. Gillam (1976) no. 9, mid to later third century. Possibly c. A.D. 250–300.

#### Finds of uncertain status

- 4 O01. Wt. 58g. (BC/HY). Thirteen sherds from a jar or a constricted-necked jar.
- 5 R02. Wt. 2g. (BC/HY). A bodysherd from a North Gaulish beaker.
- 6\* S30. Wt. 180g. RE 44 (BC/HY). Fragments from the wall and rim of form 36, decorated, *en barbotine*, with large and very elongated ivy leaves. East Gaulish (Rheinzaubern). The vessel is approximately one-third complete. Late Antonine or early third-century.
- 7 F01. Wt. 8g. RE 36 (BC/HY). Two rimsherds and two indented bodysherds from a necked indented Rhenish Trier beaker. c. A.D. 200–260.

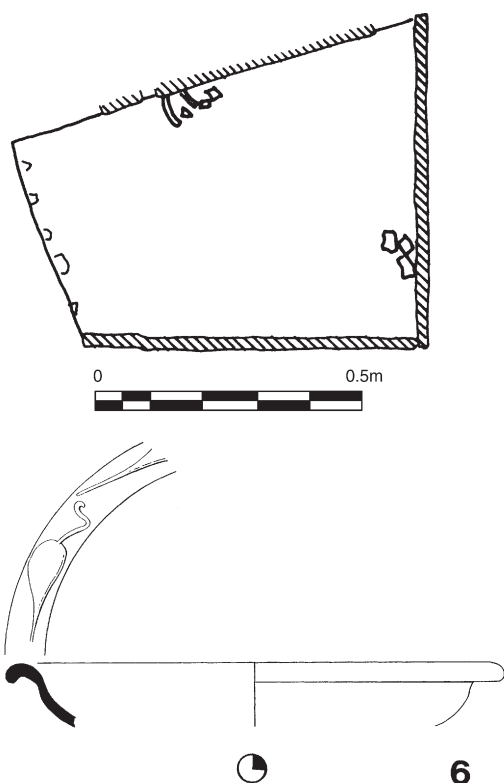


FIG. 4.191 Plan and form 36 from pyre debris deposit 232.

- 8 F02. Wt. 2g. (BC/HY). Two Nene Valley colour-coated ware bodysherds. c. A.D. 160/170+.

**Interpretation** Redeposited pyre debris.

#### 234 1966/CREMATION 1 PHASE 3

Plan FIG. 4.93; details FIG. 4.192.

**Description** Records limited. No pit defined. Material recorded as being in jar (5) in topsoil.

**Cremated human bone** Adult (18–100 years); unsexed. Wt. 29.6g.

##### Pyre goods

- 1 Copper alloy; sheet (1), fragments (3 including 1 distorted by heat).
- 2 Iron; hobnail (3).
- 3 Iron; nail (7).
- 4 Bone veneer types: B1.1, C2.

##### Grave goods

- 5\* B01. Wt. 330g. RE 1, BE 73. Six base sherds, 15 wall sherds and a single rimsherd from a jar with a strongly everted rim. Incomplete. The wall sherds are sooted. One sherd has obtuse lattice decoration and one shows there was a groove at the top of the obtuse lattice zone. Cf. Gillam (1976) nos 10–12, later third to fourth-century; Gillam (1970) type 147, A.D. 290–370. A.D. 270–350.

**Interpretation** Uncertain, possibly originally urned cremation burial.

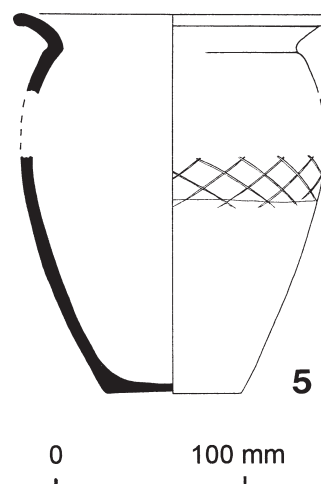


FIG. 4.192 Urn from possible urned cremation burial 234.

#### 235 1967/162 UNPHASED

Plan FIG. 4.93; details FIG. 4.193.

**Description.** No pit defined on surface. Irregular 'black area' containing most of finds (0.66 x 0.44m; major axis N/S) found c. 0.04m above base (depth of feature not stated).

**Cremated human bone** Subadult–adult (13–100 years); unsexed. Wt. 21.4g.

##### Pyre goods

- 1\* Copper alloy; Hemmoor bucket, rim fragments (a, b) and decorated body fragments with grooves inlaid with silver (c).
- 2\* Copper alloy; handle. L. 21mm.
- 3 Copper alloy; fragment, melted.
- 4 Iron; nail (11, 2 uncorroded and 1 found in cremated bone).

##### Finds of uncertain status

- 5 F02. Wt. 1g. (BC/KZ). A chip in Nene Valley colour-coated ware. c. A.D. 160/170+.

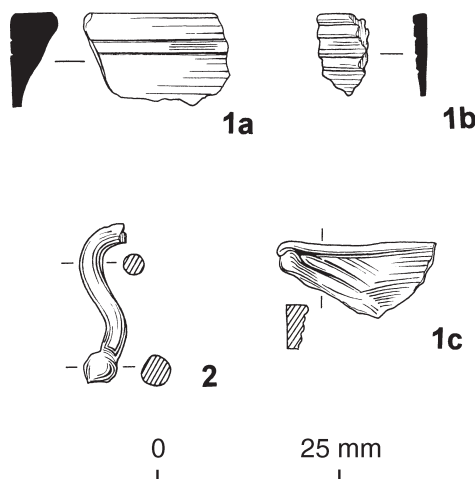


FIG. 4.193 Pyre goods from pyre debris deposit 235.

- 6 B01. Wt. 3g. RE 5 (BC/KZ). Two BB1 jar rim fragments. Third to mid fourth-century.
- 7 B01. Wt. 3g. RE 6 (BC/KZ). Two BB1 jar rim fragments. Third to mid fourth-century.
- 8 R10. Wt. 18g. (BC/KZ). Seven greyware bodysherds.

**Interpretation** Redeposited pyre debris possibly in spread rather than cut feature.

## 236 1967/152 PHASE 2

Plan FIG. 4.93; details FIG. 4.194.

**Description** Sub-rectangular pit placed near 'large boulder', possibly these are stones shown at NW corner (0.86 x 0.65m; major axis N/S). Fill: a thin dark line around edge of pit other than in NE corner where there had possibly been an intrusion. This dark layer contained most of iron nails and excavator suggested it may have represented an organic lining as in 227, though none of the nails are recorded as being driven into the pit wall as in that case. Interior fill: reddish brown sandy soil with occasional pebble, towards base very dense black areas on sides and in N part. Most of finds recorded from 'black' areas. Cremated bone from (12) and in fill. Veneers noted to have been scattered throughout fill but mainly associated with iron nails. Relationships: an intrusion suggested by excavator in NE corner, possibly because fill was brown. No indication from plan of cut, though black lining was missing in this area.

**Cremated human bone** Two groups. (i) from jar (12), (ii) possibly associated with samian vessel (14).

- (i) Adult (30–45 years); unsexed. Wt. 307.4g (including 11.1g worked bone). Pathology: exo – patella.
- (ii) Adult (18–40 years); unsexed. Wt. 202.1g. Pathology: exo – patella.

**Charcoal** Indeterminate (\*).

### Pyre goods

- 1\* Copper alloy; vessel rim fragment.
- 2 Copper alloy; nail.
- 3 Copper alloy; sheet fragment (25).
- 4 Iron; hobnail (9).
- 5 Iron; nail from cinerary urn.
- 6 Iron; nail (2 from pot BC/JY).
- 7\* Bone veneer types: A2.2 (FIG. 4.194, no. 7d); A3.2 (FIG. 4.194, nos 7c, 7e–h); A4 (FIG. 4.194, nos 7i–j); A7.4; B2.2; B3; C2; F (FIG. 4.194, nos 7a–b, 7f–g, 7k–l).
- 8 Bone; four shaped and decorated fragments.
- 9 Bone; worked object (4 fragments).
- 10 Bone; handle fragment, decorated with incised lines and iron-stained.
- 11 Ivory fragments (4).

### Grave goods

- 12 B01. Wt. 395g. RE 15 (BC/JX). Seven rimsherds and fragments, a base sherd, an obtuse lattice decorated sherd and another 143 bodysherds many very small, from a BB1 jar. Probably early to mid third-century.
- 13\* B01. Wt. 62g. RE 30 (BC/JY). Three BB1 jar rims and 13 shoulder and girth sherds with obtuse lattice and groove above. Cf. Gillam (1976) no. 8, mid third-century. c. A.D. 240–260.
- 14\* S30. Wt. 68g. RE 21. Four joining fragments of form 37, East Gaulish. The ovolo cannot be matched exactly, but cf. Schönberger and Simon 1966, Taf. 11, 290, and Fölzer 1913, Taf. xxxii, 945–6. The figure (*ibid*, Taf. xxvi, 179) is used on bowls made at Trier. The space-fillers to the left of the figure are too eroded for identification. Trier decorated ware appears in Severan contexts in Britain (e.g. at Cramond: Hartley 1974, 204, no. 26). Probably third-century.

### Other finds

- 15 Iron; nail (58 including 20 shanks), most probably from organic lining.
- 16 Iron; nail, uncorroded from top of burial.

### Finds of uncertain status from 'black' fill

- 17 B01. Wt. 95g. (BC/JW). A fragment from a jar rim, nine sherds with obtuse lattice, two with groove above, and 49 small sherds and scraps. c. A.D. 240–350.
- 18 R03. Wt. 45g. (BC/JW). Eleven jar bodysherds in greyware.
- 19 O01. Wt. 16g. RE 7. An oxidised ware dish/bowl or wide-mouthed jar rim fragment, probably north-western. Second to third-century.
- 20 S30. Wt. 12g. RE 7 (BC/JW). A rim fragment of form 30 or 37, East Gaulish (Rheinzabern). Late second or first half of the third-century.
- 21 S30. Wt. 14g. (BC/JW). A body fragment of form 31 (Sb), East Gaulish (Rheinzabern). Late second or first half of the third-century.

**Interpretation** Urned cremation burial with redeposited pyre debris in fill.

## 237 1966/CIST 4 UNPHASED

Plan FIG. 4.93; details FIGS 4.195, 4.196.

**Description** Records limited. Approximately circular pit lined with sandstone slabs. Slabs on N and E sides recorded as having fallen and may have been removed prior to photography. Excavator noted line of nails on NW and suggested presence of wooden box. A burnt area noted on E side.



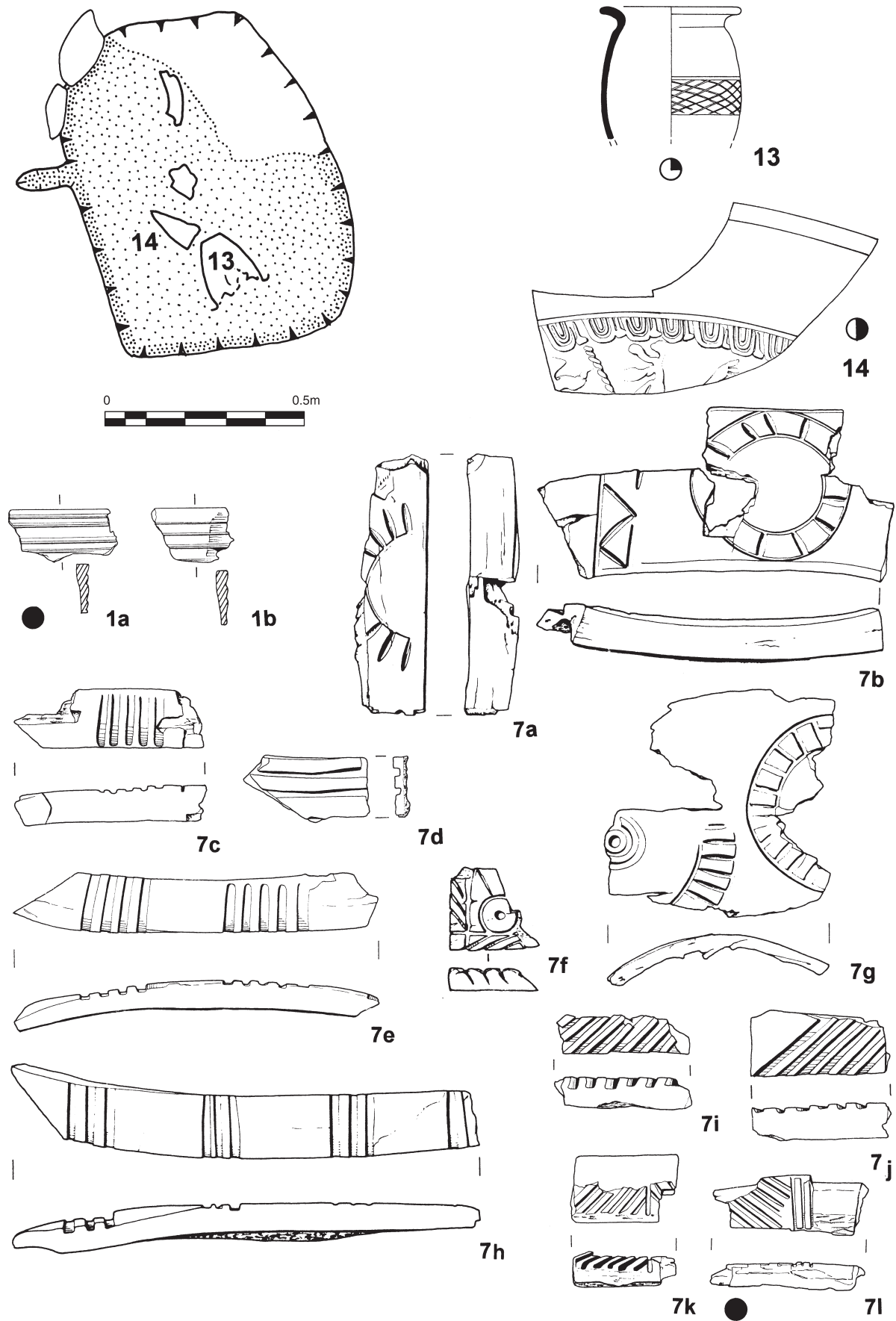


FIG. 4.194 Plan, pyre and grave goods from urned cremation burial 236.

**Cremated human bone** Adult (30–40 years); female? Wt. 234.1g (including 28.6g animal and worked bone). (FIG. 6.1).

**Cremated animal bone** Horse; sheep/goat, domestic chicken.

**Charcoal** Present in cremated bone.

#### Pyre goods

- 1\* Copper alloy; Hemmoor bucket; rim fragment, relief-decorated fragment. L. 34mm, W. 20mm, and handle fragment L. 49mm, diameter 8mm.
- 2 Copper alloy; ring fragment. Diameter 19mm.
- 3 Copper alloy; sheet fragments (17 including one riveted), also one other burnt fragment.
- 4\* Gold; earring. Fragment of molten gold. There are traces of a hook suggesting that this is the remains of an earring worn during cremation. L. 21 mm. Previously published as Allason-Jones 1989a, 47, no. 14. (LA-J).
- 5 Iron; hobnail (4).
- 6\* Bone veneer types: A1 (FIG. 4.195, no. 6a); A2.1; A2.2 (FIG. 4.195, nos 6d–e; A3.2 (FIG. 4.195, no. 6q); A4.1 (FIG. 4.195, nos 6n–p); A4.2 (FIG. 4.195, no. 6g); A5.5 (FIG. 4.195, nos 6h–i); A6.2 (FIG. 4.195, no. 6c); A7 (FIG. 4.195 no. 6f); B1.1 (FIG. 4.196, nos 6r–t); B2.2 (FIG. 4.196, nos 6ab–ac); B4; C1.2 (FIG. 4.196, nos 6y–aa); C2 (FIG. 4.196, nos 6v–x); E2.1 (FIG. 4.196, nos 6ad–ag); E3.
- 7 Glass; bead. Melted lump. Cloudy deep blue.

#### Other finds

- 8 Iron; nail (25 including 3 fragments), some of which were probably associated with the construction of a wooden box.

**Interpretation** Unurned cremation burial, possibly contained with a wooden box, with redeposited pyre debris.

### 238 1966/5 PHASE 2

Plan FIG. 4.93; details FIG. 4.197.

**Description** Records limited. Location of cremated bone not stated, assumed to have been in vessels. Jars (3) and (4) are described in the scanty records as if they were one vessel.

**Cremated human bone** Adult (35–45 years); male?? Wt. 153.6g (including worked bone). Pathology: abscess – left maxillary M3; ddd – 1c; oa – sacro-iliac; exo – patella.

#### Pyre goods

- 1 Iron; nail.
- 2 Bone; rod, rectangular-sectioned, both ends broken.

NB For possible pottery pyre good see under (3).

#### Grave goods

- 3\* B01. Wt. 470g. BE 100. An incomplete BB1 jar, rim missing and body incomplete, with obtuse lattice decorated zone with groove above. c. A.D. 240–350. Also a BB1 bodysherd, heavily burnt, probably from another vessel.
- 4\* B01. Wt. 540g. RE 25. An incomplete BB1 jar with everted rim, its diameter not exceeding the maximum girth, with obtuse burnished lattice zone on the girth. Cf. Gillam (1970) type 145, A.D. 230–300. Perhaps early to mid third-century.
- 5\* F02. Wt. 68g. RE 35 (B66/5). About half the rim of a Nene Valley colour-coated ware beaker of tall bag beaker form. Cf. Perrin (1999) 90, nos 115–22, later second to third-century.

#### Finds of uncertain status

- 6 B01. Wt. 12g. A BB1 bodysherd, sooted. Hadrianic to mid fourth-century.

**Interpretation** Possibly urned cremation burial.

### 239 1967/164 UNPHASED

Plan FIG. 4.149; details FIG. 4.198.

**Description.** Sub-rectangular pit (0.88 x 0.41m; major axis W/E). Fill: dark with many traces of charcoal and cremated bone. Truncated by machine.

**Cremated human bone** Subadult–adult (13–100 years); female?? Wt. 17.7g.

**Charcoal** *Betula* sp. (xx).

*Corylus* sp. (x).

#### Pyre goods

- 1\* Copper alloy; basin rim fragment.
- 2 Copper alloy; stem fragment.
- 3 Copper alloy; sheet fragments (7), melted fragments (20).
- 4 Iron; hobnail (2).
- 5 Iron; nail (10 including fragments).
- 6 Iron; nail (fragment found in cremated bone).
- 7 Glass; ten melted lumps (c. 30g), one of which appears to be a collapsed cylindrical neck (BC/LA).

**Interpretation** Redeposited pyre debris.

### 240 1966/16 PHASE 1

Plan FIG. 4.149; details FIG. 4.199.

**Description** Records limited. No pit defined and a jar is described as being near surface. Relationship of various elements not stated but bones assumed to have been in that jar. Jar (5) is probably the one referred to.

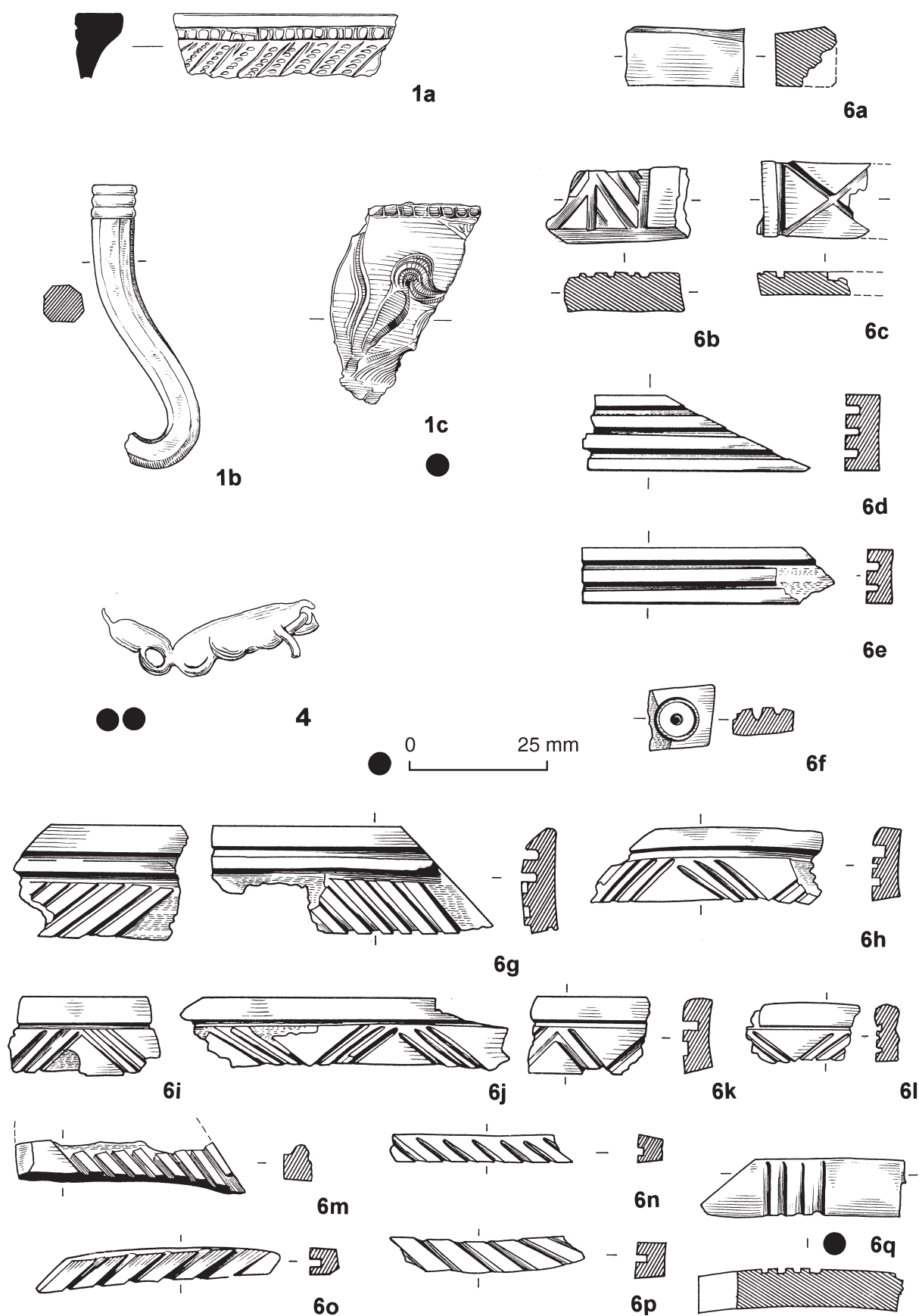


FIG. 4.195 Pyre goods from unurned cremation burial 237.

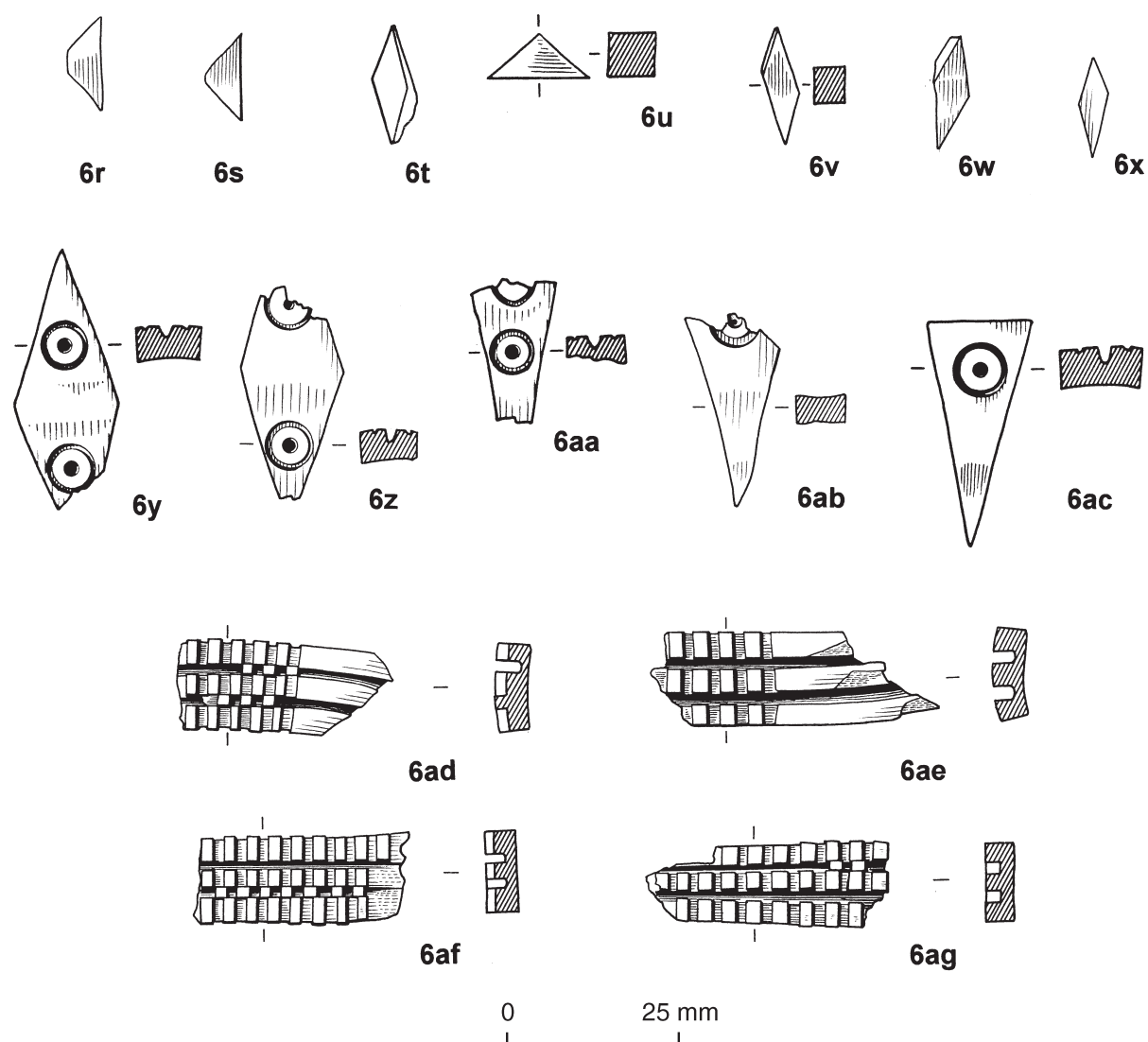


FIG. 4.196 Pyre goods from unurned cremation burial 237.

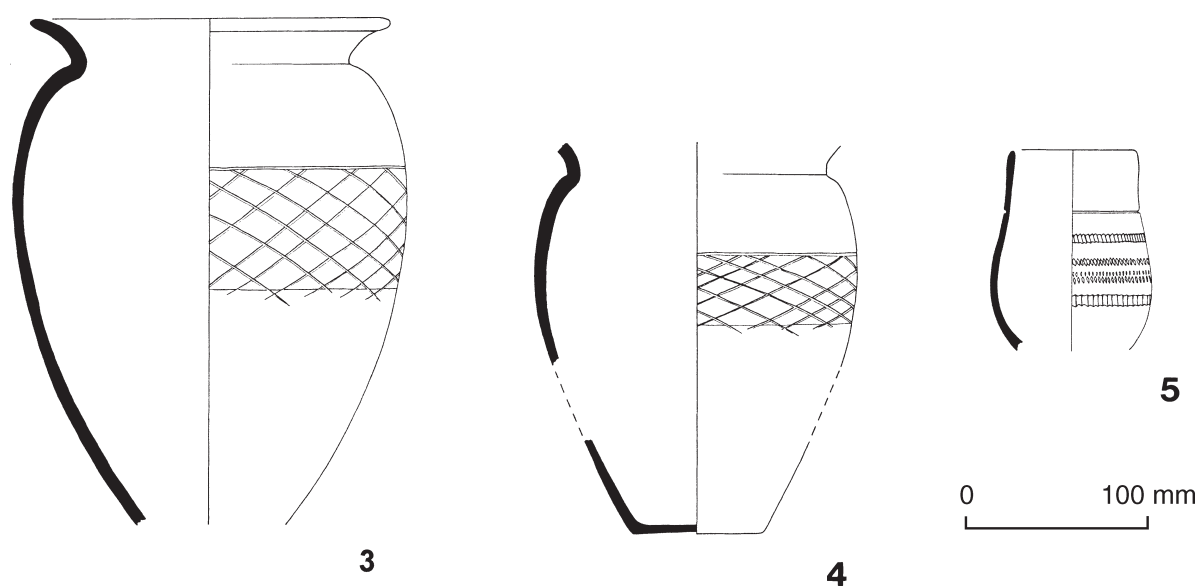


FIG. 4.197 Grave goods from possible urned cremation burial 238.

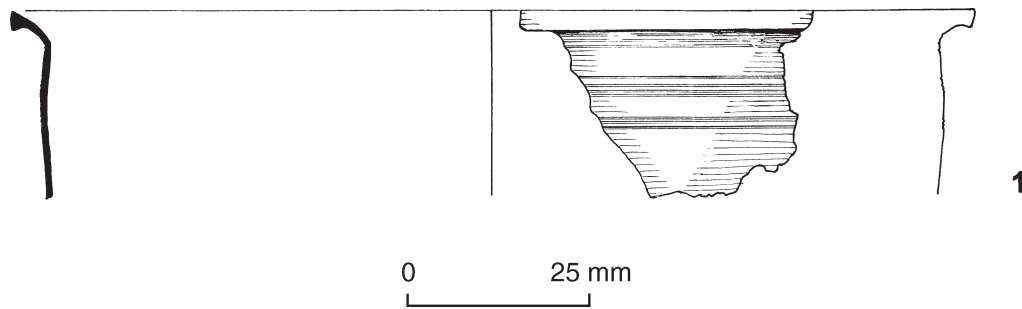


FIG. 4.198 Pyre goods from pyre debris deposit 239.

**Cremated human bone** Adult (50–100 years); unsexed. Wt. 225.8g (including copper-alloy globules fused to vault and upper limb, and 1.2g worked bone). Pathology amtl; ddd – T/L. (FIG. 6.3).

#### Pyre goods

- 1 Copper alloy; melted globule on bone.
- 2 Iron; nail adhering to skull.
- 3\* Antler; cylinder.
- 4\* Bone veneer types: A4.3; D2.2 (FIG. 4.199, no. 4b); E2.1 (FIG. 4.199, no. 4a); F.

#### Grave goods

- 5 B01. Wt. 448g. RE 30, BE 93. Four BB1 jar rimsherds, all burnt, 19 bodysherds heavily burnt orange, four unburnt, four with obtuse lattice, one burnt, and five base sherds, four heavily burnt. A complete profile seems to survive. Cf. Gillam (1976) nos 7–9, third-century. Probably early to mid third-century.

#### Finds of uncertain status

- 6 B01. Wt. 18g. RE 10. A BB1 everted rim jar rim. Probably third-century.
- 7 S30. Wt. 2g. RE 7 (B66/16). A rim fragment from form 30 or 37. Rheinzabern and late second or third-century.
- 8 S30. Wt. 6g. (B66/16). Four body fragments. Rheinzabern and late second or third-century.

**Interpretation** Possibly urned cremation burial.

#### 241 1966/15 PHASE 3

Plan FIG. 4.149; details FIG. 4.200.

**Description.** Records limited. No pit defined and (1) described as being near surface. Relationship of various elements not stated but bones assumed to have been in (1).

**Cremated human bone** Subadult–adult (15–100 years); unsexed. Wt. 16.7g.

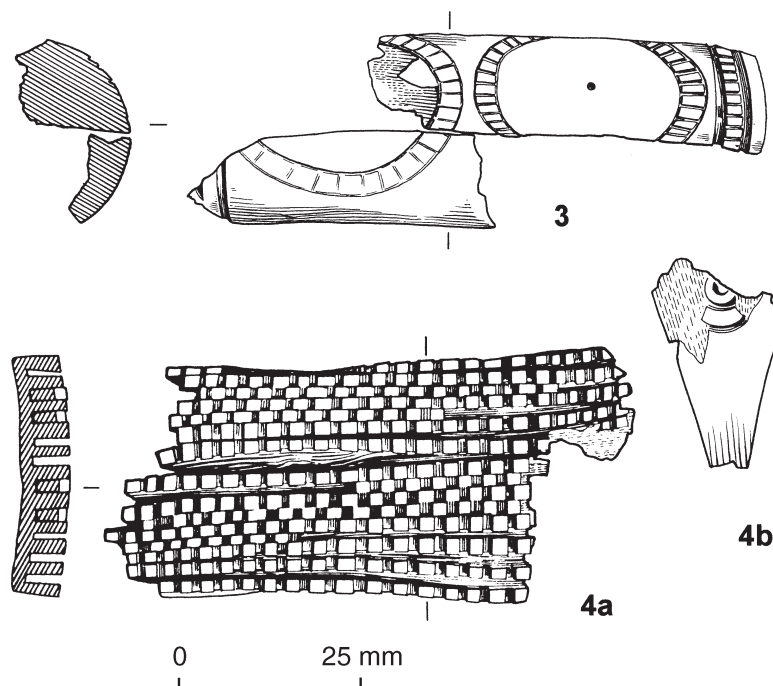


FIG. 4.199 Pyre goods from possible urned cremation burial 240.



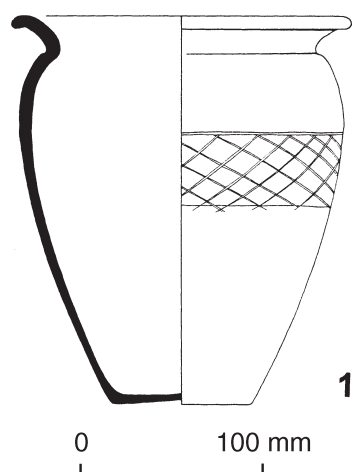


FIG. 4.200 Grave goods from possible urned cremation burial 241.

### Grave goods

- 1\* B01. Wt. 895g. RE 47, BE 100. A BB1 jar with everted rim, its diameter exceeding the maximum girth, with obtuse lattice zone above, very heavily burnt on one side, perhaps on the side of the pyre. Cf. Gillam (1976) nos 12–14, early to mid fourth-century. Later third to mid fourth-century.

**Interpretation** Possibly urned cremation burial.

### 242 1966/14 PHASE 3

Plan FIG. 4.149; details FIG. 4.201.

**Description** Records limited. No pit defined. Jar (1) described as being in topsoil.

### Finds of uncertain status

- 1\* B01. Wt. 315g. RE 36, BE 35. A BB1 jar with everted rim, diameter exceeding the maximum girth with obtuse burnished lattice zone without groove, exterior sooted. Cf. Gillam (1976) nos 12–14, early to mid fourth-century. Later third to mid fourth-century.
- 2 R03. Wt. 32g. (B66/12). A greyware jar bodysherd.
- 3 O01. Wt. 72g. (B66/12). Three oxidised bodysherds, probably north-western. Second to third-century.

**Interpretation** Uncertain.

### 243 1966/20 PHASE 1

Plan FIG. 4.149; details FIG. 4.202.

**Description** Records limited. No description of context, relationship of finds or disturbance.

**Cremated human bone** One group with two individuals.

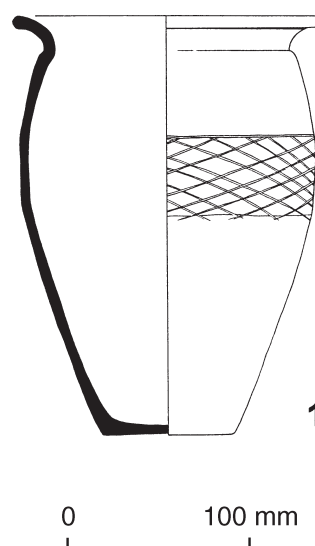


FIG. 4.201 Jar from deposit 242.

- (i) Adult (25–45 years); female?? Wt. 514.4g (including 77g animal bone and 1.2g worked bone). Pathology: pitting – metatarsal.
- (ii) Juvenile (5–12 years); unsexed.

**Cremated animal bone** Cattle; sheep/goat.

### Pyre goods

- 1\* Copper alloy; wire link. L. 11mm.
- 2 Copper alloy; fragments (3 melted and 1 fragment found in cremated bone).
- 3 Iron; hobnail found in cremated bone.
- 4 Iron; nail.
- 5\* Bone veneer types: A2.1 (FIG. 4.202, no. 5c); A5.5 (FIG. 4.202, no. 5a); A7.1 (FIG. 4.202, no. 5b); A7.2 (FIG. 4.202, no. 5d); B2.2.

### Finds of uncertain status

- 6 Glass; beads recorded in fill but not now identifiable.
- 7 B01. Wt. 63g. Six bodysherds of BB1. Hadrianic to mid fourth-century.
- 8\* F03. Wt. 110g. RE 29. A necked globular jar with a beaded rim in Nene Valley colour-coated ware decorated with a barbotine hunt scene showing a dog. A.D. 160/170–250.
- 9\* O01. Wt. 27g. RE 25. A constricted-necked jar with bifid, obliquely notched rim, probably north-western, with early to mid third-century parallels at the Walton-le-Dale kiln site (Evans and Rátkai forthcoming a).

**Interpretation** Uncertain. Cremated bones indicate a dual burial, small finds indicate presence of redeposited pyre debris.

### 244 1966/21 PHASE 1

Plan FIG. 4.149.

**Description** Records limited. No description of context, relationship of finds or disturbance.

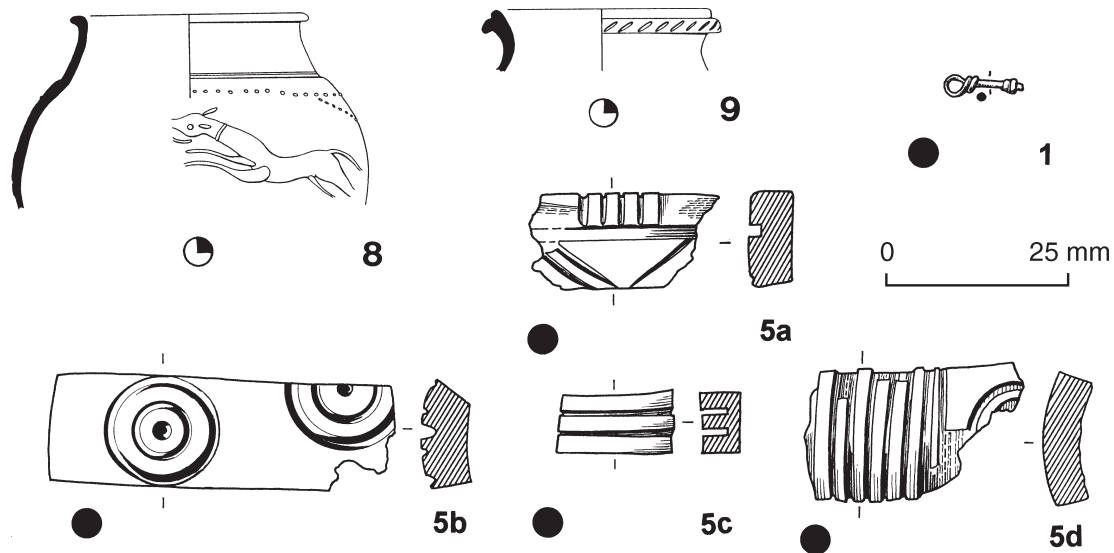


FIG. 4.202 Finds from deposit 243.

**Cremated human bone** Adult (18–45 years); unsexed. Wt. 162.1g (including 4.1g animal bone and 0.7g worked bone).

**Cremated animal bone** Large ungulate.

#### Pyre goods

- 1 Iron; hobnail shank from cremated bone.
- 2 Bone veneer type: A2.

#### Finds of uncertain status

- 3 B01. Wt. 71g. RE 4 (66/15). A BB1 rimsherd and seven bodysherds, four of which and the rim are heavily burnt, with obtuse lattice decoration. Cf. Gillam (1976) no. 8, mid third-century. Probably early to mid third-century.
- 4 G02. Wt. 8g. (66/15). An East Yorkshire calcite-gritted ware bodysherd. Third to fourth-century.
- 5 R03. Wt. 33g. (66/15). Two greyware jar bodysherds.

**Interpretation** Uncertain.

#### 245 1966/38 UNPHASED

Plan FIG. 4.149; details FIG. 4.203.

**Description** Records limited. Placed in pit.

**Cremated human bone** Adult (40–100 years); male?? Wt. 167.7g. Pathology: ddd – S1; op – acetabulum; exo – patella.

#### Pyre goods

- 1\* Copper alloy; basin rim fragment.
- 2 Copper alloy; sheet fragments (10), two distorted by heat.
- 3 Iron; hobnail (12).
- 4 Iron; nail (2 fragments adhering to copper alloy).
- 5 Bone veneer type: A3.1.

**Interpretation** Uncertain.

#### 246 1967/166 UNPHASED

Plan FIG. 4.149; details FIG. 4.204.

**Description** Records limited. Shallow oval pit (0.72 x 0.44m; major axis W/E). Fill: dark-brown soil with occasional stones and some charcoal with 'hollow where pots had been'. Possibly re-excitation of 1966 feature.

#### Pyre goods

- 1\* Copper alloy; ring fragment. Diameter 50mm.
- 2 B01. Wt. 2g. (BC/LB). Two very burnt BB1 bodysherds, Hadrianic to mid fourth-century.

**Interpretation** Uncertain.

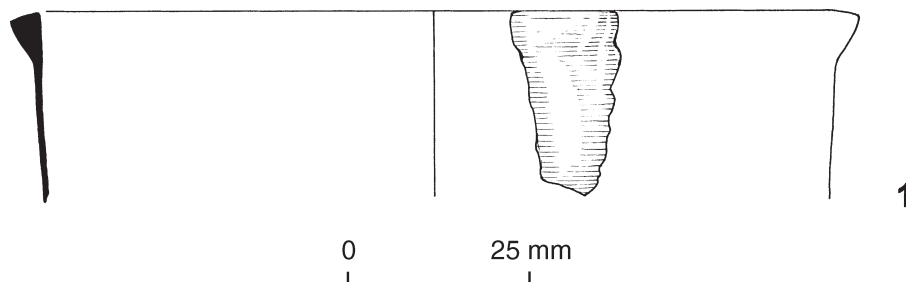


FIG. 4.203 Basin fragment from deposit 245.

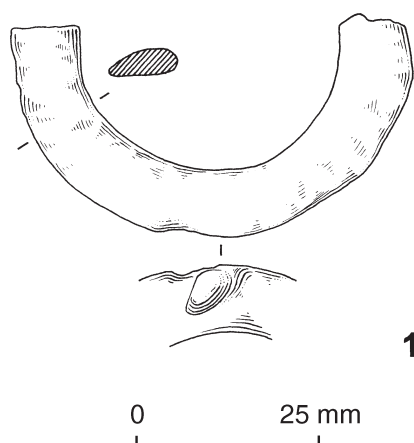


FIG. 4.204 Ring fragment from deposit 246.

**247 1967/167 PHASE 3**

Plan FIG. 4.149.

**Description** Records limited. Shallow oval pit (1.07 x 0.76m; major axis N/S). Fill: brown with dark burnt area with some charcoal centrally. Excavator felt it may have been a recent feature; Miss Charlesworth suggested it might be re-excitation of 1966 feature.

**Cremated human bone** Adult (18–100 years); unsexed. Wt. 7.2g.

**Charcoal** Pomoideae (\*).

**Pyre goods**

- 1 Iron; hobnail.
- 2 Iron; nail (3 fragments).
- 3 B01. Wt. 45g. (BC/LC). Twenty-three small BB1 sherds including two with obtuse lattice, most are burnt.
- 4 R00. Wt. 6g. RE 17. A rimsherd from a necked beaker, very burnt, possibly greyware. Perhaps later third to fourth-century.

**Interpretation** Uncertain.

**248 1966/24 UNPHASED**

Plan FIG. 4.149.

**Description** Records limited. No description of context or relationship of finds.

**Cremated human bone** Bone from two individuals; original location within grave unknown.

- (i) Adult (18–100 years); unsexed. Wt. 33.5g.
- ii) Infant (3–4 years); unsexed. Wt. 9.6g (including 0.4g worked bone). Fragment of intrusive adult bone.

**Pyre goods**

- 1 Copper alloy; sheet fragment.
- 2 Bone veneer type: A1.

**Interpretation** Uncertain; separate bags of cremated bone suggest dual burial if they have been correctly labelled, though such records as there are note 'little bone' from this feature.

**249 1967/183 PHASE 2**

Plan FIG. 4.149.

**Description** Records limited. Described as 'a slight area of black fill'.

**Pyre goods**

- 1 Iron; nail.

**Finds of uncertain status**

- 2 B01. Wt. 50g. (BC/LT). Nineteen BB1 bodysherds with obtuse lattice decoration, some with groove above, and 45 burnished bodysherds and scraps from a jar. c. A.D. 240–350.

**Interpretation** Spread.

**250 1966/22 PHASE 2**

Plan FIG. 4.149; details FIG. 4.205.

**Description** Records limited. Described as 'in boulder hole'. Beaker (3) marked as coming from this context but not recorded in written record.

**Cremated human bone** Infant (4 years); unsexed. Wt. 98g (including glass fused to rib shaft). Copper-alloy staining to mandible and maxilla. (FIG. 6.2).

**Pyre goods**

- 1 Glass; vessel. Blue/green melted lump containing cremated bone (1g). Probably from this burial.
- 2\* B01. Wt. 42g. A BB1 jar rim fragment, heavily burnt orange, with everted, fairly vertical rim and obtuse lattice zone. Cf. Gillam (1976) no. 7, early third-century.

**Grave goods**

- 3\* F02. Wt. 90g. RE 100, BE 100. A complete small-necked globular beaker in Nene Valley colour-coated ware. Cf. Gillam (1970) type 55, A.D. 270–370. c. A.D. 250–350.

**Finds of uncertain status**

- 4\* Gold; earring, Ring of drawn gold wire which tapers slightly to the ends which run parallel before winding around each other to provide a sliding knot fastening. Diameter 11mm, thickness 1mm. Previously published as Allason-Jones 1989a, 45, no. 6.

This is of a similar type to 220.1 but is not its matching pair. (LA-J).

- 5\* B01. Wt. 63g. RE 14. A BB1 jar rimsherd with everted rim, sooted. Cf. Gillam (1976) nos 7–8, early to mid third-century.

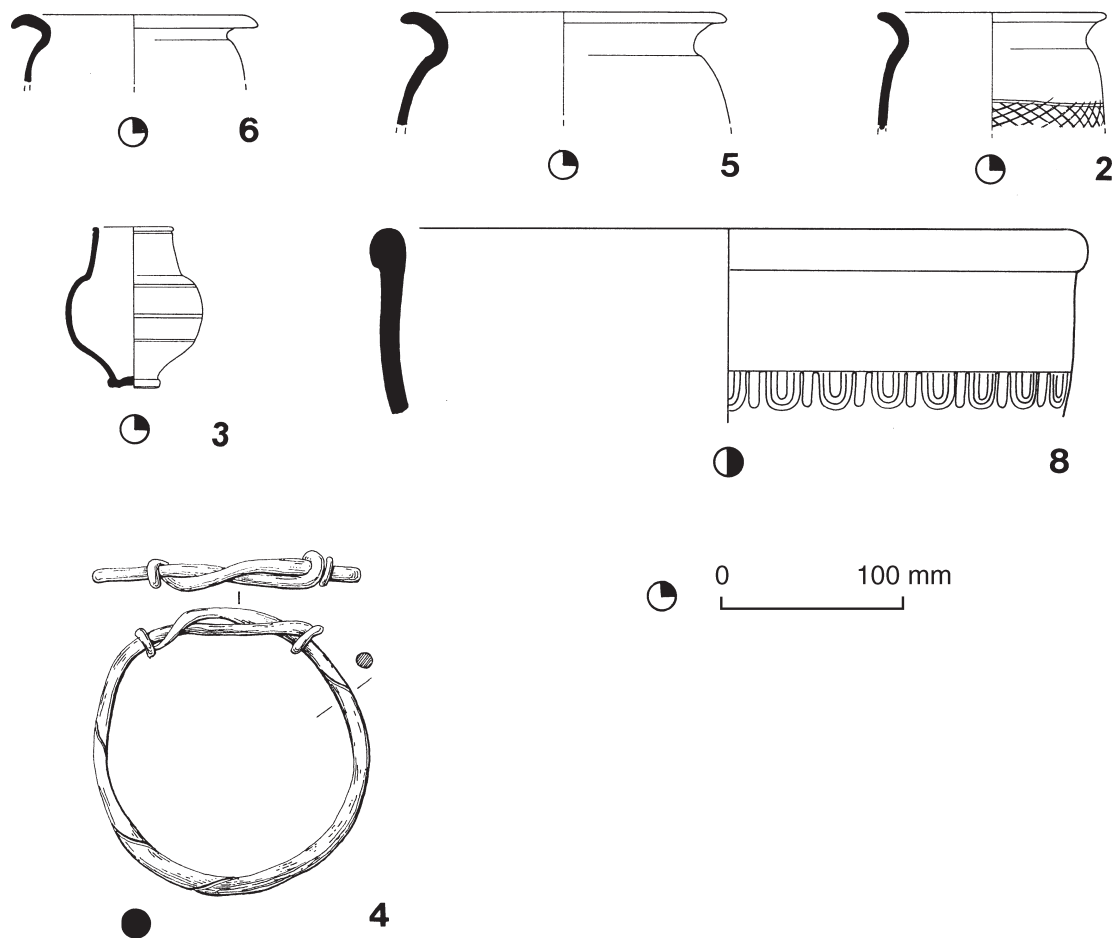


FIG. 4.205 Pyre, grave and other finds from urned cremation burial 250.

- 6\* B01. Wt. 32g. RE 27. A BB1 jar rimsherd with everted rim. Cf. Gillam (1976) nos 7–9, third-century. Perhaps mid third-century.
- 7 G02. Wt. 30g. Two calcite-gritted ware bodysherds. Third to fourth-century.
- 8\* S10. Wt. 1g. (BC/BP). Form 30 or 37. South Gaulish. Flavian to Trajanic.

**Interpretation** Possibly urned cremation burial.

**Description** Records limited. No description of context, no record of any vessels.

**Cremated human bone** Subadult (16–18 years); female?? Wt. 278.2g (including 8.8g animal bone). Pathology: mv – wormian.

**Cremated animal bone** Large ungulate.

**Interpretation** Uncertain, possibly urned cremation burial.

## 251 1966/30 UNPHASED

Plan FIG. 4.149.

**Description** Records limited. No description of context or relationship of finds.

**Cremated human bone** Adult (18–25 years); male?? Wt. 116g (including 11.1g animal bone and 0.7g worked bone).

**Cremated animal bone** Large ungulate, sheep/goat.

**Pyre goods**

- 1 Copper alloy; sheet fragments.

**Interpretation** Uncertain.

## 252 1966/31 UNPHASED

Plan FIG. 4.149.

## 253 1967/176 PHASE 2

Plan FIG. 4.149; details FIG. 4.206.

**Description.** Irregular square sandstone cist (0.37 x 0.3m). Fill: light-brown soil within cist, very dark area outside of cist. Dark area presumably lies between cist and pit walls, pit not defined. Cremated bones in (12), dish (13) placed on top of cinerary urn. Fragments of (11) from dark area on N, E and S sides, with one fragment inside cist.

**Cremated human bone** Infant (3–4 years); unsexed. Wt. 42g.

**Pyre goods**

- 1 Silver; strip.
- 2 Lead alloy; seating. L. 45mm, W. 43mm.
- 3 Iron; hobnail (from charcoal sample).

- 4 Iron; nail (9 plus 9 fragments).  
 5 Glass; vessel. Five heat-affected blue/green fragments.  
 6\* Glass; bead. Gold-in-glass; spherical. L. 4mm, diameter 4mm, perforation diameter 1mm. From cremated bones.  
 7\* Glass; beads. Three gold-in-glass beads melted together into a toggle shape. L. 10.5mm, section 6.5 x 6mm, perforation diameter 1.5mm. From cremated bones.  
 8\* Glass; bead. Two spherical beads, black body with red surfaces; with heat blistered surfaces. L. 3mm, diameter 4mm, perforation diameter 1mm. From cremated bones.  
 9 Glass; bead. Deep opaque blue melted fragment. From cremated bones.  
 10 B01. Wt. 13g. RE 18 (BC/LH). Five sherds from the rim and shoulder of a BB1 jar with

everted, rising rim. All the sherds are very heavily burnt. Perhaps *cf.* Gillam (1976) nos 4–5, later second to early third-century.

- 11\* S30. Wt. 95g. RE 50, BE 100 (sf 417). Many joining fragments, heavily burnt, probably after fracture, giving the greater part of a small jar of form Ludowici VSb, with unusual incised ('cut-glass') decoration closely paralleled at Rheinzabern (*cf.* Ludowici 1905, 260, fig. 66). This kind of decoration has no specific dating at Rheinzabern, but the pot is unlikely to be earlier than the late second century.

#### Grave goods

- 12\* B01. Wt. 560g. RE 11, BE 100. A BB1 jar, perhaps largely complete except for the rim, with everted rim, sooted, of similar diameter to the maximum girth, with obtuse lattice zone on the girth with groove above.

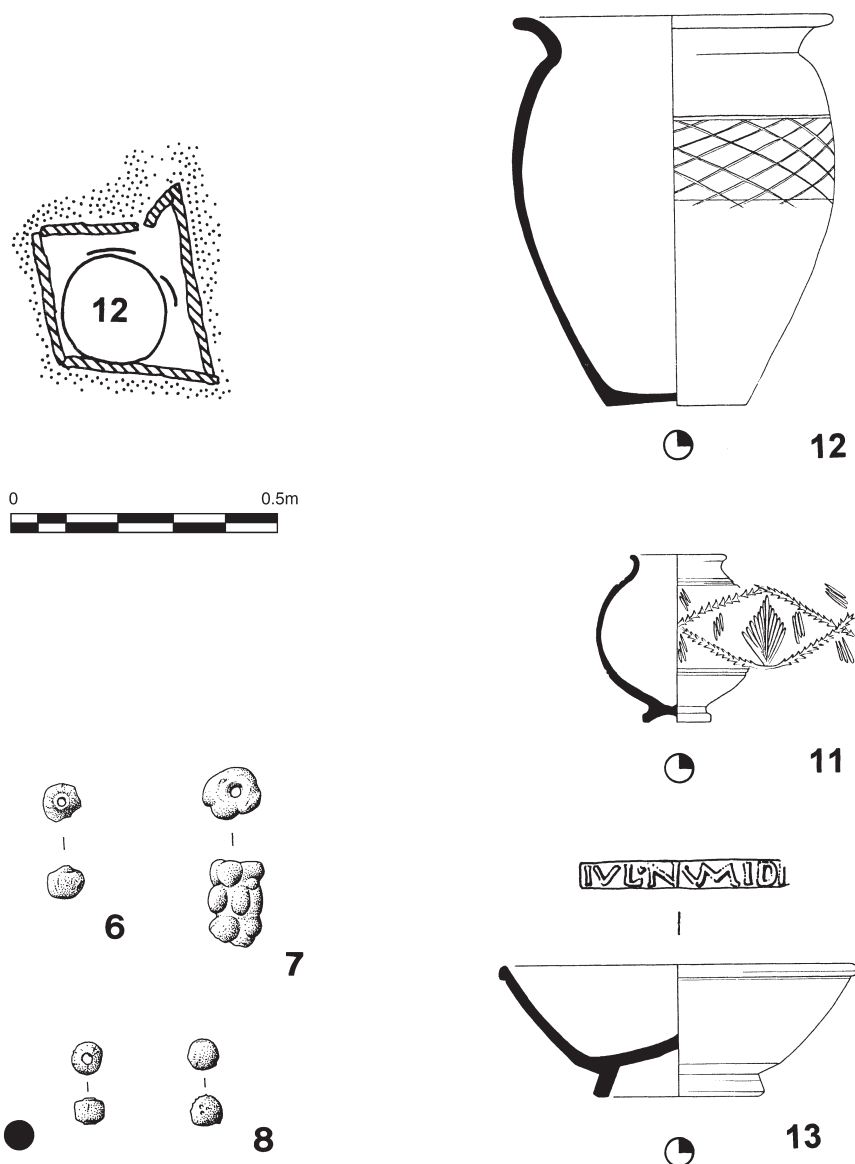


FIG. 4.206 Plan, pyre and grave goods from urned cremation burial 253.



Cf. Gillam (1976) no. 10, later third-century. c. A.D. 260–300.

- 13\* S20. Wt. 450g. RE 94, BE 100. Fourteen fragments and numerous splinters together giving a complete dish of form 31, stamped IVL.NVMIDI by Iulius Numidus of Lezoux (Die 2a). The footring is slightly worn. No wear on interior. Vessels with his stamps are known from Benwell and Chesters, and his products include a high proportion of form 79. The general record implies a date in the range A.D. 165–200.

#### Finds of uncertain status

- 14 Glass; vessel. Six colourless body fragments (BC/LH) probably from fill of cist.
- 15 S30. Wt. 13g. RE 2. Three fragments of form 37 rim, East Gaulish (Rheinzabern), with only the top of the ovolo surviving. Late second or third-century.
- 16 B01. Wt. 275g, BE 55 (BC/LH). Numerous sherds from the shoulder, girth and waist of a BB1 jar with obtuse lattice zone with groove above. A.D. 240+.
- 17 S20. Wt. 6g. A gaming counter, shaped from a body fragment of form 37, Central Gaulish. The ovolo (Rogers B135) was used by Catussa on signed moulds and by Cantomallus on stamped ones, and the signature and stamp occur together on a bowl from Lezoux. Rogers (1999, 91) dates the bowls with Catussa signatures to A.D. 125–140, but that is impossibly early and the range A.D. 160–200 should include all his work. Diameter 28mm.

**Interpretation** Urned cremation burial with redeposited pyre debris.

#### 254 1966/33 UNPHASED

Plan FIG. 4.149.

**Description** Records limited. No pit identified. 'One dish and one cooking pot', described as being in topsoil. Vessels not identifiable in archive.

#### Pyre goods

- 1 Copper alloy. Fragment of riveted sheet.

**Interpretation** Uncertain.

#### 255 1966/36 PHASE 3

Plan FIG. 4.147; details FIG. 4.207.

**Description** Records limited. Two grey pots, a samian vessel and a glass vessel noted. Only one of the 'grey' vessels survives, Glass vessel was placed inside one of the grey vessels. Cremated bone assumed to have been in one of the jars but not explicitly stated to have been.

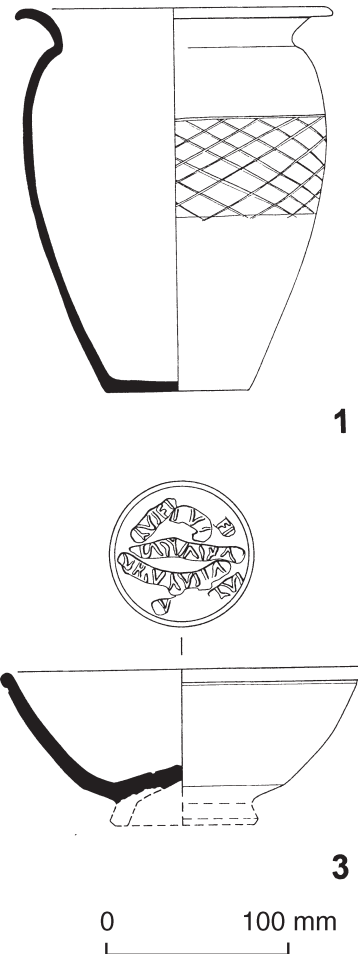


FIG. 4.207 Grave goods from probable urned cremation burial 255.

**Cremated human bone** Adult (18–100 years); unsexed. Wt. 94.1g (including 1.3g worked bone).

#### Grave goods

- 1\* B01. Wt. 735g. RE 50, BE 75. A near-complete BB1 jar with everted rim, its diameter exceeding the maximum girth, with an obtuse lattice zone on the girth with a groove above. Part of the rim is missing and part of the base. It does seem probable that the damage to the base was a deliberate part of the ritual, it seems an unlikely location for accidental damage. One side of the pot is burnt, when this happened it appears to have been stood next to another pot which sheltered the girth from burning on one side. Cf. Gillam (1976) no. 10, later third-century. Possibly c. A.D. 270–300.
- 2 'Grey pot' – not now identifiable.
- 3\* S30. Wt. 525g. RE 100. Form 31 (Sb/Sh), complete, except for the footring, which seems to have been trimmed off. Probably not rouletted and with no enclosing grooves for it, but there is a groove around the stamp. The rim and the inside are partly

weathered. It is stamped VRSV VSFE (Die 1a) several times in overlapping, fragmentary impressions. Ursulus worked at Trier, where a form 31 stamped with this die has been found at the potteries (Frey 1993, 90). It was used on the late form Ludowici Sh and has also been found at Holzhausen. *c.* A.D. 200–250. Four other stamps from the same die occurred at Brougham (9.6, 75.15 and S29–30).

- 4 Glass vessel – missing.

**Interpretation** Probably urned cremation burial.

#### 256 1966/- PHASE 4

Plan FIG. 4.149; details FIG. 4.208.

**Description** No written records, but marked on plan, and photographs exist.

**Interpretation** Long cist.



FIG. 4.208 Long cist 256; scale in inches.

#### 257 1966/35 PHASE 3

Plan FIG. 4.149; details FIG. 4.209.

**Description** Records limited. No pit defined and described as being in topsoil. Cremated bone in (4).

**Cremated human bone** Subadult (14–15); unsexed. Wt. 312g (including blue glass fused to temporal vault, iron hobnail fused to femur shaft; and 0.5g animal bone).

#### Pyre goods

- 1 Iron; nail found in cremated bone.
- 2 Silver; molten fragment with fragments of bone adhering. L. 32mm.
- 3 Glass; bead. Melted lump consisting of translucent deep blue with translucent strain-cracked colourless glass fused to it; in two joining fragments. Dimensions 29 x 10 x 6.5mm.
- 4 Glass; bead. Melted lump of cloudy blue glass; parts of three fused, short, square-sectioned beads visible. Dimensions 13 x 13 x 9mm, dimensions of beads *c.* 2.5 x 2mm.

#### Grave goods

- 5\* B01. Wt. 1000g. RE 100, BE 28. A BB1 jar with everted rim of greater diameter than the maximum girth which has an obtuse lattice zone on it with a groove above. *Cf.* Gillam (1976) nos 11–13, later third to mid fourth-century. *c.* A.D. 270–300.
- 6\* R22. Wt. 1875g. RE 97, BE 81. Much of a constricted-necked jar with a frilled cordoned rim. This is no longer complete although it may have been on excavation.

**Interpretation** Urned cremation burial.

#### 258 1966/34 PHASE 3B

Plan FIG. 4.149; details FIG. 4.210.

**Description** Records limited. Probably originally cist of sandstone slabs, two sides only remaining in photograph which provides main information about deposit. Cremated bone assumed to be from inside one of vessels but no record of which one; dish (5) may have been inserted on its side.

**Cremated human bone** Juvenile–subadult (11–14 years); unsexed. Wt. 189.8g.

#### Pyre goods

- 1 Silver; ?brooch. Molten fragment.
- 2 Copper alloy; nail.
- 3 Copper alloy; sheet fragments (2 including one riveted); also two molten fragments.

#### Grave goods

- 4\* B01. Wt. 1200g. RE 71, BE 100. A complete BB1 jar with everted rim, its diameter exceeding the maximum girth with obtuse lattice zone with light groove above. The pot is very heavily burnt and the rim and wall are distorted on one side. Some other vessels show this and it would appear they have been placed close to the pyre. *Cf.* Gillam (1976) nos 12–14, early to mid fourth-century. *c.* A.D. 270–350.
- 5\* B01. Wt. 550g. RE 100, BE 100. A simple-rimmed BB1 dish with intersecting arc

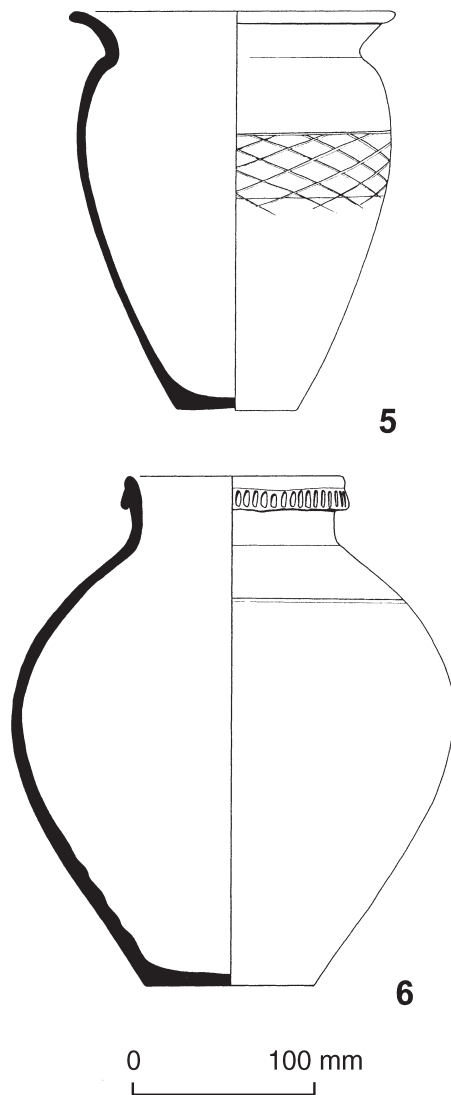


FIG. 4.209 Grave goods from urned cremation burial 257.

decoration on the wall and intersecting circles on the base, along with, very unusually, the 'Redcliff motif' on the interior of the base. Probably third to mid fourth-century.

- 6\* F02. Wt. 350g. RE 41, BE 100. A largely complete Nene Valley colour-coated ware pentice-moulded beaker in oxidised ware. Cf. Howe *et al.* (1980) nos 55–6, fourth-century.

**Interpretation** Urned cremation burial with redeposited pyre debris.

## 259 1967/249 PHASE 2

Plan FIG. 4.149; details FIG. 4.211.

**Description** Extent of pit not defined, deposit covered by sandstone capping stone (0.84 x 0.76m), plan of base may indicate a pit of c. 0.38m at base.

Fill: light brown without any traces of 'black' other than on capping slab. Vessels packed with stones. Cremated bone in (2).

**Cremated human bone** Infant–juvenile (3–7 years); unsexed. Wt. 32.7g.

### Pyre goods

- 1 Iron; nails (3) including fragments found in cremated bone.

### Grave goods

- 2\* B01. Wt. 500g. RE 44, BE 100. (BC/OX). A fairly complete BB1 jar, missing parts of the rim, with everted rim of smaller diameter than the maximum girth, decorated with obtuse burnished lattice zone on the girth with a groove above. Cf. Gillam (1976) no. 8, mid third-century. c. A.D. 240–270.
- 3\* F01. Wt. 65g. RE 16, BE 100. (BC/OV). Sherds forming the profile of an indented-necked Trier Rhenish beaker. Cf. Gillam (1970) type 46. c. A.D. 200–260.
- 4\* S20. Wt. 250g. RE 91, BE 100 (BC/OW). Form 33, complete, with worn footring, stamped MARTIM (Die 1b). This particular Martius (iv) worked at Lezoux. Stamps from this die have been noted from Chesters, Malton, South Shields (2) and Wallsend fort (2), as well as on form 80. c. A.D. 160–200.

**Interpretation** Urned cremation burial with redeposited pyre debris on capping stone.

## 261 1966/29 UNPHASED

Plan FIG. 4.149; details FIG. 4.212.

**Description** Records limited. Described as 'small deep hole, lined at the top with dressed stone, cut into a larger pit'. Placed to E of large boulder.

**Cremated human bone** Adult (18–100 years); male?? Wt. 26.1g.

### Pyre goods

- 1\* Copper alloy; sheet fragment, distorted by heat. L. 34mm, W. 20mm.
- 2 Copper alloy; strip. L. 50mm, W. 9mm.
- 3 Bone veneer type: A2.1.
- 4 Glass; vessel. Blue/green melted lump (12g). Probably from this burial.

### Finds of uncertain status

- 5\* B01. Wt. 270g. RE 45. Five rimsherds and 13 shoulder and girth sherds from a BB1 jar with everted rim, the rim diameter is less than the maximum girth, with obtuse lattice zone with very lightly incised line above the lattice. Cf. Gillam (1976) nos 7–9, early to mid third-century. Perhaps c. A.D. 240–270.

**Interpretation** Redeposited pyre debris.

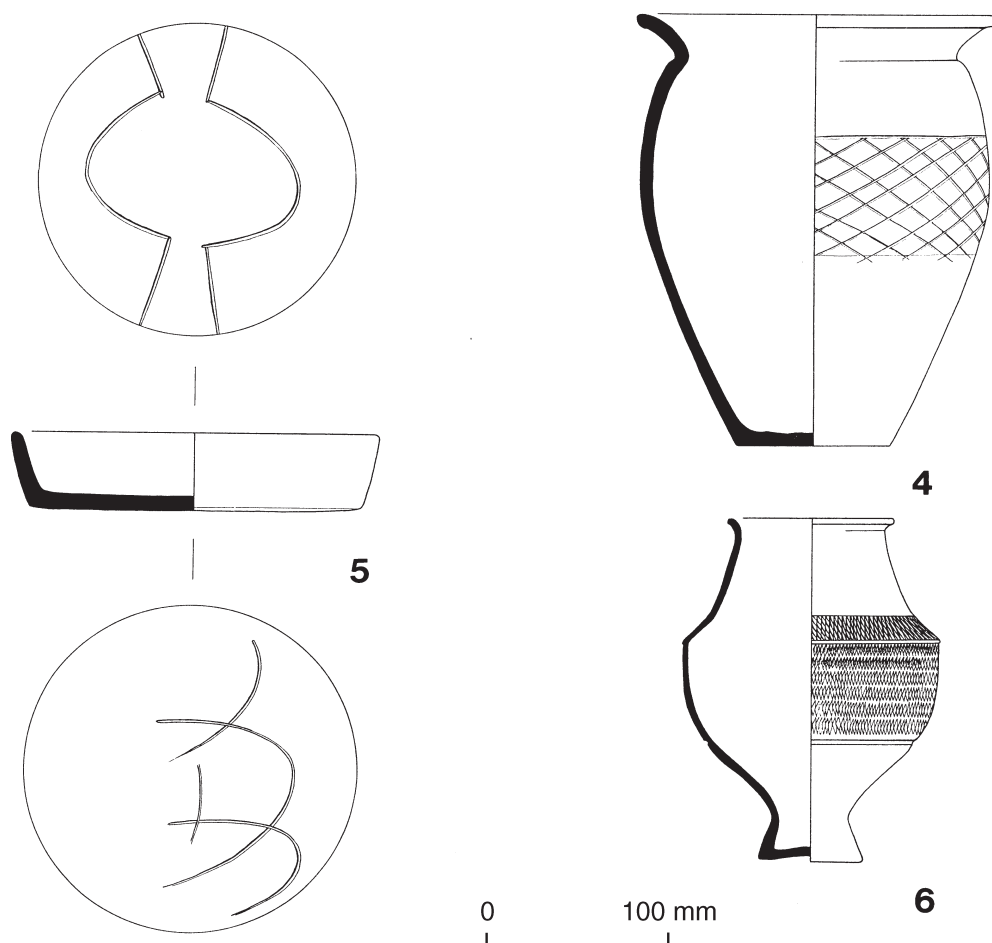


FIG. 4.210 Grave goods from urned cremation burial 258.

## 262 1966/43 PHASE 3

Plan FIG. 4.14; details FIG. 4.213.

**Description** Records limited. Vessels placed in cist. No indication of where cremated bone originated, assumed in jar (3).

**Cremated human bone** Adult (45–100 years); female? Wt. 531.5g (including 2.5g worked bone). Pathology; op – 2C, 1T/L, rib facet, right glenoid, left humerus head, distal tibiae, tali, cuboid; Schmorl's – 1T; oa – left acetabulum; pitting – lateral clavicle; exo – ulna tuberosities; cysts – right distal tibia.

### Pyre goods

- 1 Copper alloy; sheet fragments (5), also two molten fragments.
- 2\* Bone veneer types: A2.1 (FIG. 4.213, nos 2a–b); A4; A5.5 (FIG. 4.213, no. 2); C2; E2.1 (FIG. 4.213, no. 2e).

### Grave goods

- 3\* B01. Wt. 1160g. RE 67, BE 100. A largely complete BB1 jar with everted rim of greater diameter than the maximum girth with obtuse lattice zone on the latter with a groove above. Most of the exterior seems to

have been burnt except for an area where the pot seems to have been stacked against another. Cf. Gillam (1976) nos 12–14, early to mid fourth-century. c. A.D. 270–350.

- 4\* S30. Wt. 800g. RE 90, BE 100. Form 31R (Sb/Sh), East Gaulish (Rheinabern); almost complete, but without rouletting. The stamp was applied so lightly that it scarcely registers, and is illegible. It has a single circle around it. The footring is moderately worn. Interior eroded. This pot is slightly less bowl-like than most of the other examples of form Sb/Sh from Brougham. Probably late second or early third-century.

**Interpretation** Urned cremation burial.

## 264 1966/39 PHASE 2

Plan FIG. 4.149; details FIGS 4.214, 4.215; see also FIGS 2.1, 2.3, 5.5.

**Description** Records limited. Rectangular, capped sandstone cist, extent of pit not defined. Initially photographed with large upright slabs immediately to NE, relationship between slabs and cist unknown, the possibility exists that at least