

Properties

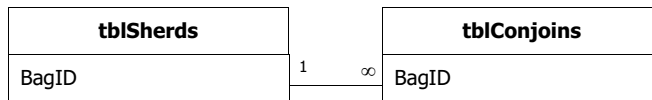
ColIsGuid: s_GUID DateCreated: 08/09/2003 10:48:10
 Description: Lists the contexts which have sherds conjoining the sherd group described in tblSherds LastUpdated: 23/09/2003 14:08:01
 OrderByOn: False RecordCount: 10
 Updatable: True

Columns

Name	Type	Size
BagID	Text	10
s_Generation	Long Integer	4
ConjoinsBagID	Text	10
s_GUID	Replication ID	16
s_Lineage	OLE Object	-

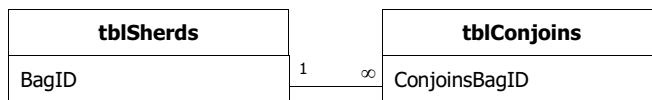
Relationships

tblSherdstblConjoins



Attributes: Enforced, Cascade Updates
 RelationshipType: One-To-Many

tblSherdstblConjoins



Attributes: Enforced, Cascade Updates
 RelationshipType: One-To-Many

Properties

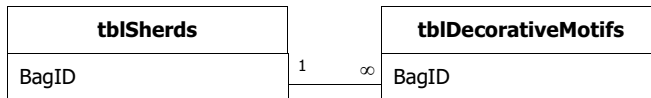
ColIsGuid: s_GUID DateCreated: 03/10/2003 11:16:21
 Description: Lists the individual decorative motifs for each sherd group LastUpdated: 03/10/2003 12:24:03
 OrderByOn: False RecordCount: 278
 Updatable: True

Columns

Name	Type	Size
BagID	Text	10
s_Generation	Long Integer	4
DecorTech	Text	20
DecorMotif	Text	50
s_GUID	Replication ID	16
DecorTechSub	Text	15
s_Lineage	OLE Object	-

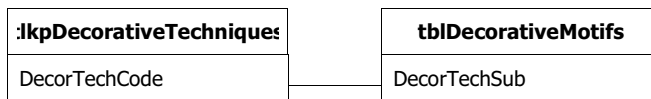
Relationships

tblSherdstblDecorativeMotifs



Attributes: Enforced, Cascade Updates
 RelationshipType: One-To-Many

tlkpDecorativeTechniquesblDecorativeMotifs



Attributes: Not Enforced
 RelationshipType: Indeterminate

Properties

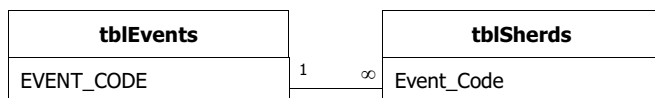
DateCreated:	22/09/2003 16:21:18	Description:	All events which occurred under the CTRL Section 1 project
LastUpdated:	23/09/2003 15:33:12	OrderByOn:	True
RecordCount:	79	Updatable:	True

Columns

Name	Type	Size
EVENT_NAME	Text	75
EVENT_CODE	Text	24
EVENT_TYPE	Text	40
CONTRACTOR	Text	60
DATE	Text	40

Relationships

tblEventstblSherds



Attributes: Enforced, Cascade Updates
RelationshipType: One-To-Many

Properties

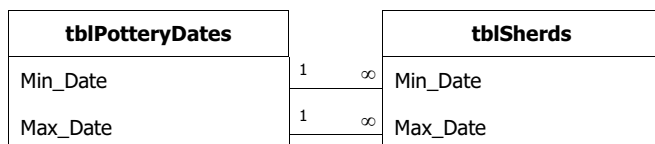
DateCreated:	23/09/2003 14:05:17	Description:	The date ranges of objects identified by specialists
LastUpdated:	23/09/2003 14:06:37	OrderByOn:	False
RecordCount:	85	Updatable:	True

Columns

Name	Type	Size
Min_Date	Long Integer	4
Max_Date	Long Integer	4
TypologicalDate	Text	50

Relationships

tblPotteryDatestblSherds



Attributes: Enforced, Cascade Updates
RelationshipType: One-To-Many

Properties

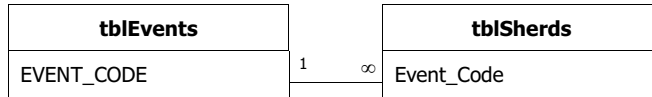
ColIsGuid:	s_GUID	DateCreated:	08/09/2003 10:48:10
Description:	Main table describing the individual sherd groups	Filter:	((tblSherds.Event_Code="ARC MSH 98"))
LastUpdated:	24/01/2006 12:40:54	OrderBy:	tblSherds.Event_Code
OrderByOn:	True	RecordCount:	2045
Updatable:	True		

Columns

Name	Type	Size
Gen_Comments	Long Integer	4
BagID	Text	10
s_Generation	Long Integer	4
Event_Code	Text	24
s_GUID	Replication ID	16
Context Number	Long Integer	4
s_Lineage	OLE Object	-
Specialism	Text	20
FabricGroup	Text	2
FabricType	Text	4
ComponentPart	Text	1
ComponentPartType	Integer	2
VesselForm	Text	2
VesselForm1	Text	6
VesselForm2	Text	4
SherdCount	Long Integer	4
Weight	Single	4
RimDiameter	Long Integer	4
RimPercent	Byte	1
SurfaceTreat	Text	20
Manufacture	Text	20
Residue	Text	40
ResiduePosition	Text	20
Repair	Text	30
Perforation	Text	30
Illustration	Yes/No	1
Condition	Text	15
Comments	Memo	-
Decoration	Text	255
EVE	Single	4
Min_Date	Long Integer	4
Max_Date	Long Integer	4
Timestamp	Date/Time	8
LastEdit	Date/Time	8
UserName	Text	255

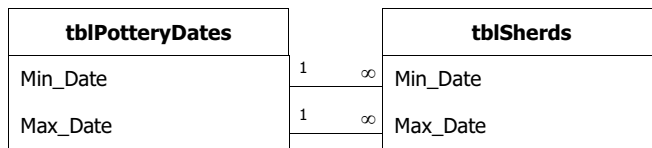
Relationships

tblEventstblSherds



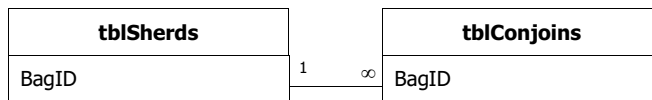
Attributes: Enforced, Cascade Updates
RelationshipType: One-To-Many

tblPotteryDatestblSherds



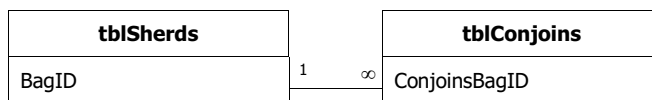
Attributes: Enforced, Cascade Updates
RelationshipType: One-To-Many

tblSherdstblConjoins



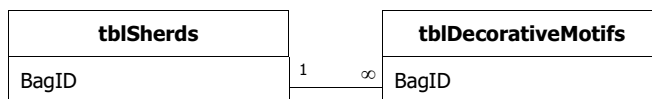
Attributes: Enforced, Cascade Updates
RelationshipType: One-To-Many

tblSherdstblConjoins



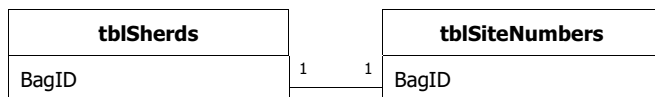
Attributes: Enforced, Cascade Updates
RelationshipType: One-To-Many

tblSherdstblDecorativeMotifs



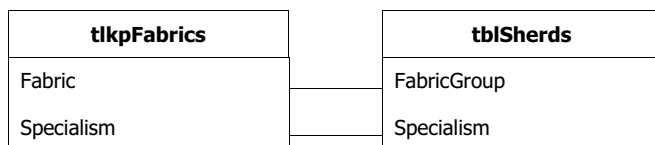
Attributes: Enforced, Cascade Updates
RelationshipType: One-To-Many

tblSherdstblSiteNumbers



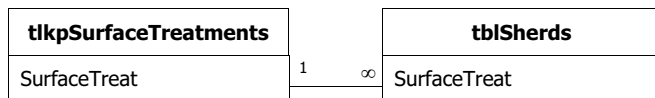
Attributes: Unique, Enforced, Cascade Updates
RelationshipType: One-To-One

tlkpFabricstblSherds



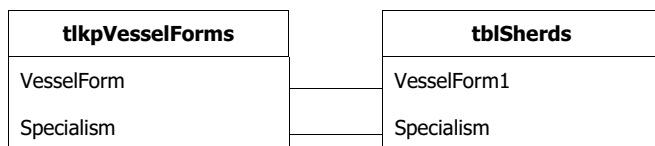
Attributes: Not Enforced
RelationshipType: One-To-Many

tlkpSurfaceTreatmentstblSherds



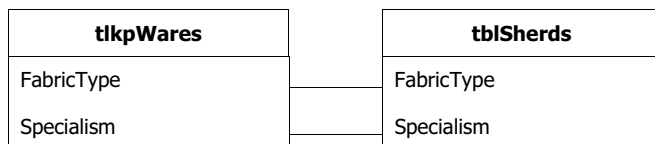
Attributes: Enforced, Cascade Updates
RelationshipType: One-To-Many

tlkpVesselFormstblSherds



Attributes: Not Enforced
RelationshipType: One-To-Many

tlkpWarestblSherds



Attributes: Not Enforced
RelationshipType: One-To-Many

Properties

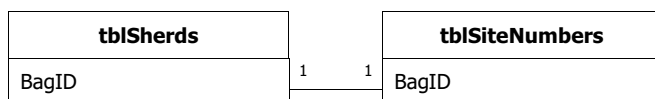
DateCreated:	08/09/2003 16:36:05	Description:	Sub data table listing small find and sample numbers associated with the sherd family
LastUpdated:	24/09/2003 13:04:44	OrderByOn:	False
RecordCount:	36	Updatable:	True

Columns

Name	Type	Size
BagID	Text	10
SFNumber	Long Integer	4
SampleNo	Long Integer	4

Relationships

tblSherdstblSiteNumbers



Attributes: Unique, Enforced, Cascade Updates
RelationshipType: One-To-One

Properties

DateCreated:	23/09/2003 10:00:57	Description:	Not In use
LastUpdated:	24/09/2003 13:04:16	OrderByOn:	False
RecordCount:	10	Updatable:	True

Columns

<u>Name</u>	<u>Type</u>	<u>Size</u>
BroadFormCode	Text	50
BroadForm	Text	50

Properties

ColIsGuid:	s_GUID	DateCreated:	08/09/2003 10:46:46
Description:	Validation table listing the permitted terms for describing vessel components	Filter:	((tlkpComponentTypes.Specialism="Prehistoric"))
LastUpdated:	26/11/2003 12:58:56	OrderByOn:	False
RecordCount:	30	Updatable:	True

Columns

Name	Type	Size
ComponentPartType	Integer	2
s_Generation	Long Integer	4
s_GUID	Replication ID	16
s_Lineage	OLE Object	-
ComponentPart	Text	1
ComponentPartDesc	Text	255
Specialism	Text	20
CPNarrowClass	Long Integer	4
CPBroadClass	Long Integer	4

Properties

ColIsGuid:	s_GUID	DateCreated:	08/09/2003 10:46:46
Description:	Validation table listing the permitted terms for describing the condition of a sherd group	LastUpdated:	08/09/2003 10:46:46
OrderByOn:	False	RecordCount:	4
Updatable:	True		

Columns

<u>Name</u>	<u>Type</u>	<u>Size</u>
Condition	Text	10
s_Generation	Long Integer	4
s_GUID	Replication ID	16
s_Lineage	OLE Object	-

Properties

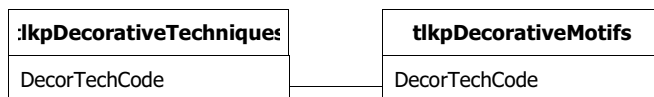
ColIsGuid:	s_GUID	DateCreated:	03/10/2003 11:16:22
Description:	Validation table listing the permitted terms for describing the decorative motifs on a sherd group	LastUpdated:	03/10/2003 13:50:48
OrderByOn:	True	RecordCount:	188
Updatable:	True		

Columns

Name	Type	Size
MotifCode	Text	1
s_Generation	Long Integer	4
s_GUID	Replication ID	16
s_Lineage	OLE Object	-
MotifLegend	Text	255
DecorTechCode	Text	15
Specialism	Text	20
Temp	Yes/No	1

Relationships

tlkpDecorativeTechniques tlkpDecorativeMotifs



Attributes: Not Enforced
 RelationshipType: Indeterminate

Properties

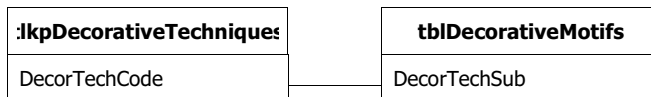
ColIsGuid: s_GUID DateCreated: 03/10/2003 11:16:22
 Description: Validation table listing the permitted terms for decorative techniques applied to a sherd group. Decorative Motifs are dependent upon decorative techniques LastUpdated: 03/10/2003 13:00:41
 OrderByOn: True RecordCount: 26
 Updatable: True

Columns

Name	Type	Size
DecorTech	Text	20
s_Generation	Long Integer	4
s_GUID	Replication ID	16
s_Lineage	OLE Object	-
DecorTechCode	Text	15
DecorTechDesc	Text	255

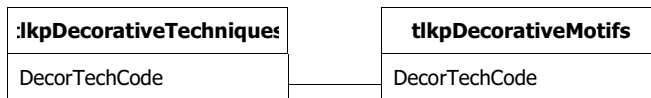
Relationships

tlkpDecorativeTechniquestblDecorativeMotifs



Attributes: Not Enforced
 RelationshipType: Indeterminate

tlkpDecorativeTechnicestlkpDecorativeMotifs



Attributes: Not Enforced
 RelationshipType: Indeterminate

Properties

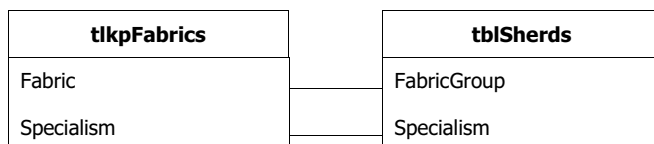
ColIsGuid:	s_GUID	DateCreated:	08/09/2003 10:46:46
Description:	Validation table listing the permitted terms for describing the fabric for a sherd group	Filter:	((tlkpFabrics.Specialism="Prehistoric"))
LastUpdated:	23/09/2003 16:11:14	OrderByOn:	True
RecordCount:	37	Updatable:	True

Columns

Name	Type	Size
Fabric	Text	2
s_Generation	Long Integer	4
s_GUID	Replication ID	16
s_Lineage	OLE Object	-
FabricDesc	Text	180
Specialism	Text	20
OverrideSpecialists	Text	2

Relationships

tlkpFabricstblSherds



Attributes: Not Enforced
RelationshipType: One-To-Many

Properties

ColIsGuid:	s_GUID	DateCreated:	08/09/2003 10:46:46
Description:	Validation table listing the permitted terms describing the separate components of a whole vessel	Filter:	((tlkpFormComponents.Specialism="Prehistoric"))
LastUpdated:	22/09/2003 16:29:24	OrderByOn:	False
RecordCount:	16	Updatable:	True

Columns

Name	Type	Size
ComponentPart	Text	1
s_Generation	Long Integer	4
s_GUID	Replication ID	16
s_Lineage	OLE Object	-
ComponentPartDesc	Text	60
Specialism	Text	20

Properties

ColIsGuid:	s_GUID	DateCreated:	08/09/2003 10:46:46
Description:	Validation table listing the permitted terms used to describe the manufacture of a sherd group	LastUpdated:	08/09/2003 10:46:46
OrderByOn:	False	RecordCount:	9
Updatable:	True		

Columns

<u>Name</u>	<u>Type</u>	<u>Size</u>
Manufacture	Text	20
s_Generation	Long Integer	4
s_GUID	Replication ID	16
s_Lineage	OLE Object	-

Properties

ColIsGuid:	s_GUID	DateCreated:	08/09/2003 10:46:46
Description:	Validation table listing the permitted terms for describing any perforations made in a sherd group	LastUpdated:	08/09/2003 10:46:46
OrderByOn:	False	RecordCount:	2
Updatable:	True		

Columns

<u>Name</u>	<u>Type</u>	<u>Size</u>
Perforation	Text	30
s_Generation	Long Integer	4
s_GUID	Replication ID	16
s_Lineage	OLE Object	-

Properties

ColIsGuid:	s_GUID	DateCreated:	08/09/2003 10:46:47
Description:	Validation table listing the permitted terms for describing any repairs made to a sherd group	LastUpdated:	08/09/2003 10:46:47
OrderByOn:	False	RecordCount:	2
Updatable:	True		

Columns

<u>Name</u>	<u>Type</u>	<u>Size</u>
Repair	Text	30
s_Generation	Long Integer	4
s_GUID	Replication ID	16
s_Lineage	OLE Object	-

Properties

DateCreated:	03/10/2003 11:31:46	Description:	Validation table listing the permitted terms for describing residue position.
LastUpdated:	03/10/2003 11:33:29	OrderByOn:	False
RecordCount:	3	Updatable:	True

Columns

<u>Name</u>	<u>Type</u>	<u>Size</u>
ResiduePosition	Text	20

Properties

ColIsGuid:	s_GUID	DateCreated:	08/09/2003 10:46:47
Description:	Validation table listing the permitted terms for describing any residues found in or on a sherd group	LastUpdated:	08/09/2003 10:46:47
OrderByOn:	False	RecordCount:	9
Updatable:	True		

Columns

Name	Type	Size
Residue	Text	50
s_Generation	Long Integer	4
s_GUID	Replication ID	16
s_Lineage	OLE Object	-

Properties

ColIsGuid:	s_GUID	DateCreated:	08/09/2003 10:46:47
Description:	Validation table listing the particular pottery period specialisms. Used for configuring the data entry interface	LastUpdated:	08/09/2003 10:46:47
OrderByOn:	False	RecordCount:	2
Updatable:	True		

Columns

<u>Name</u>	<u>Type</u>	<u>Size</u>
s_Generation	Long Integer	4
s_GUID	Replication ID	16
s_Lineage	OLE Object	-
Specialism	Text	20
SpecialismDesc	Text	50
SortOrder	Text	1

Properties

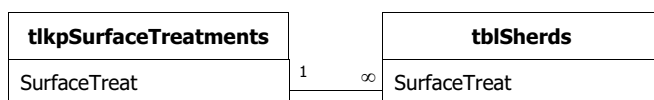
ColIsGuid:	s_GUID	DateCreated:	08/09/2003 10:46:47
Description:	Validation table listed the permitted terms describing any surface treatments applied to a sherd group	LastUpdated:	23/09/2003 14:58:37
OrderByOn:	False	RecordCount:	11
Updatable:	True		

Columns

Name	Type	Size
s_Generation	Long Integer	4
s_GUID	Replication ID	16
s_Lineage	OLE Object	-
SurfaceTreat	Text	25
SurfTreatDesc	Text	100

Relationships

tlkpSurfaceTreatmentstblSherds



Attributes: Enforced, Cascade Updates
RelationshipType: One-To-Many

Properties

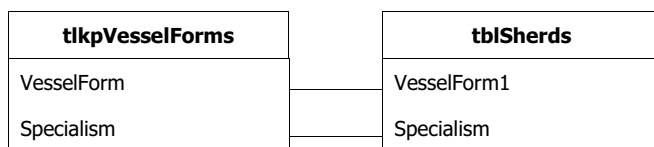
ColIsGuid:	s_GUID	DateCreated:	08/09/2003 10:46:47
Description:	Validation table listing the permitted terms for describing the form of vessel surviving as a sherd group. Not used in CTRL	LastUpdated:	06/10/2003 10:01:18
OrderByOn:	False	RecordCount:	21
Updatable:	True		

Columns

Name	Type	Size
s_Generation	Long Integer	4
s_GUID	Replication ID	16
VesselForm	Text	6
s_Lineage	OLE Object	-
VesselForm1	Text	6
VesselForm2	Text	4
Specialism	Text	20
VesselFormTypeDesc	Text	255

Relationships

tlkpVesselFormstblSherds



Attributes: Not Enforced
 RelationshipType: One-To-Many

Properties

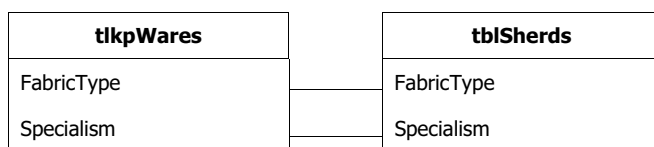
ColIsGuid: s_GUID DateCreated: 08/09/2003 10:46:47
 Description: Validation table listing the permitted terms for describing the vessel ware or fabric as represented by the sherd group LastUpdated: 03/10/2003 16:19:20
 OrderByOn: False RecordCount: 72
 Updatable: True

Columns

Name	Type	Size
FabricType	Text	4
s_Generation	Long Integer	4
s_GUID	Replication ID	16
s_Lineage	OLE Object	-
FabricTypeDescription	Text	255
SortOrder	Long Integer	4
Specialism	Text	20

Relationships

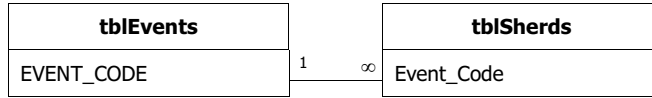
tlkpWarestblSherds



Attributes: Not Enforced
 RelationshipType: One-To-Many

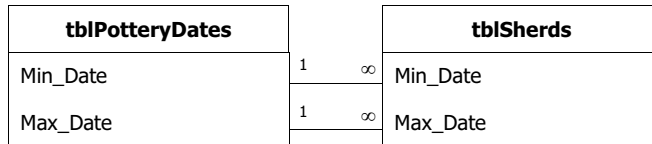
Relationships

tblEventstblSherds



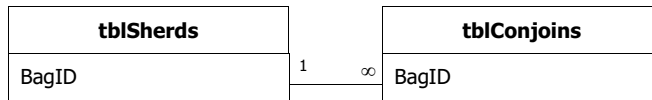
Attributes: Enforced, Cascade Updates
RelationshipType: One-To-Many

tblPotteryDatestblSherds



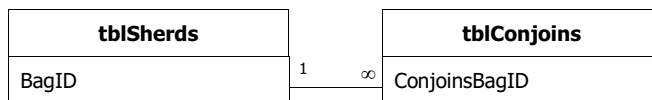
Attributes: Enforced, Cascade Updates
RelationshipType: One-To-Many

tblSherdstblConjoins



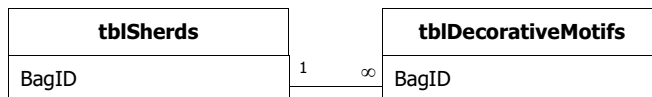
Attributes: Enforced, Cascade Updates
RelationshipType: One-To-Many

tblSherdstblConjoins



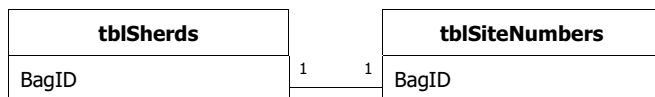
Attributes: Enforced, Cascade Updates
RelationshipType: One-To-Many

tblSherdstblDecorativeMotifs



Attributes: Enforced, Cascade Updates
RelationshipType: One-To-Many

tblSherdstblSiteNumbers



Attributes: Unique, Enforced, Cascade Updates
RelationshipType: One-To-One

tlkpDecorativeTechniquesblDecorativeMotifs



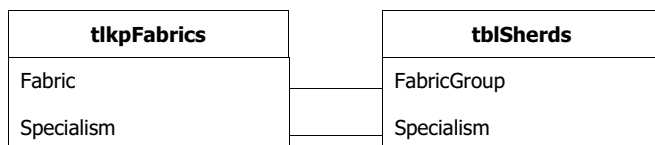
Attributes: Not Enforced
RelationshipType: Indeterminate

tlkpDecorativeTechniquestlkpDecorativeMotifs



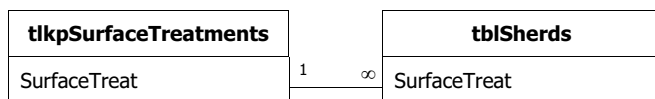
Attributes: Not Enforced
RelationshipType: Indeterminate

tlkpFabricstblSherds



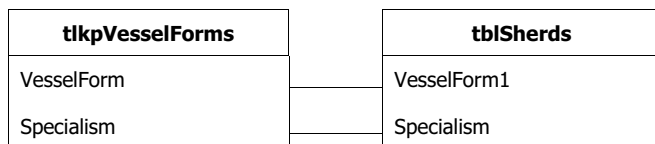
Attributes: Not Enforced
RelationshipType: One-To-Many

tlkpSurfaceTreatmentsblSherds



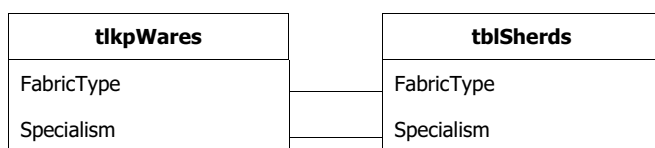
Attributes: Enforced, Cascade Updates
RelationshipType: One-To-Many

tlkpVesselFormstblSherds



Attributes: Not Enforced
RelationshipType: One-To-Many

tlkpWarestblSherds



Attributes: Not Enforced
RelationshipType: One-To-Many