

Figure 14: Microphotograph of early Neolithic longhouse posthole fill 4887, ARC WHS98. (Sample 473, infilled by dark charcoal rich beaten floor (?), soil (ChS), chalk (C) and a fine fragment of bone (Bo); the soil is open with voids (V).

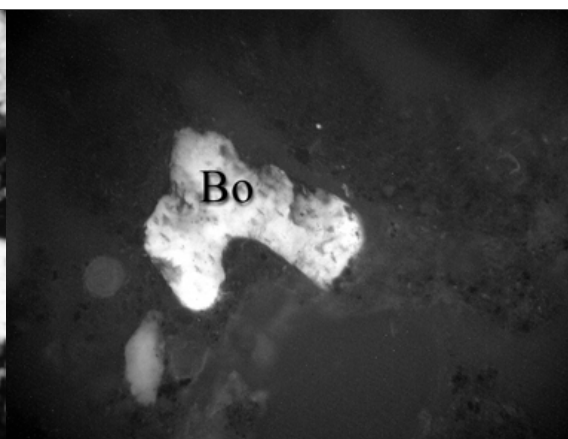


Figure 15: Detailed microphotograph of early Neolithic longhouse posthole fill 4887, ARC WHS98. (Sample 473 bone fragment that is autofluorescent under blue light (BL) due to apatite mineralogy. BL width is 0.9mm.

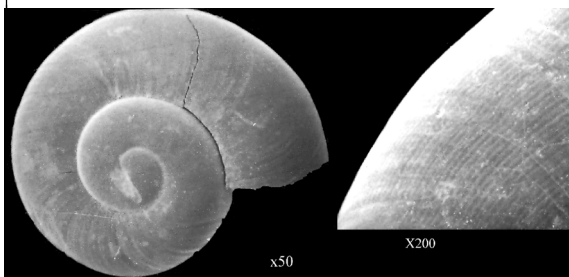


Figure 16: SEM photograph, shell of *Aegopinella pura* (right, shell sculpture).



Figure 17: Differential preservation observed in shells of *Pomatias elegans*, ARC WHS98.

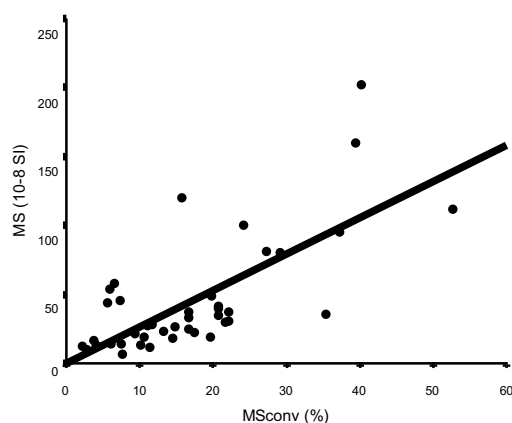


Figure 18: (above): Early Neolithic posthole fills, ARC WHS98, regression plot of  $\chi$  against  $\chi_{conv}$ .

Figure 19: (left): Early Neolithic longhouse structure 4806, ARC WHS98.