



Figure 10: *Pupilla muscorum* (top) and *Trochoidea geyeri* (bottom) in Late Glacial (molluscan zone z) deposits at White Horse Stone, ARCWHS98 (Stafford 2006a).

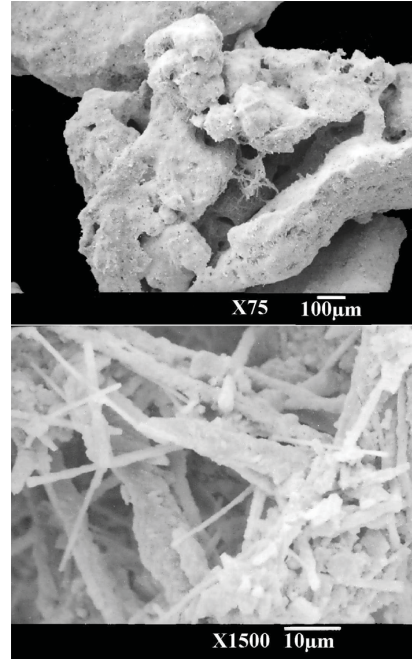


Figure 11: SEM photographs of secondary carbonate precipitate in Late Glacial deposits at White Horse Stone, ARCWHS98 (Stafford 2006b).

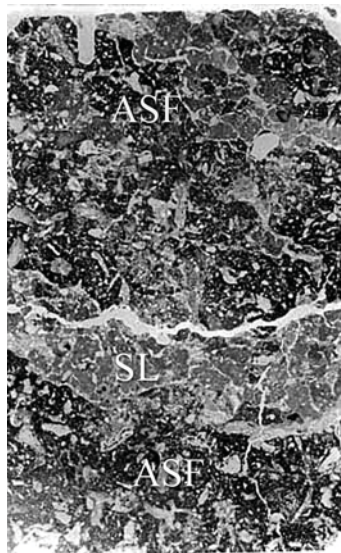


Figure 12: Scan of Younger Dryas deposits from White Horse Stone ARC WHS98 (Macphail and Crowther 2006). Sample 300a showing layers of chaotic Allerød soil fragments (ASF) separated by a soliflual layer (SL) that was clearly visible in the field. Width is ~50 mm.

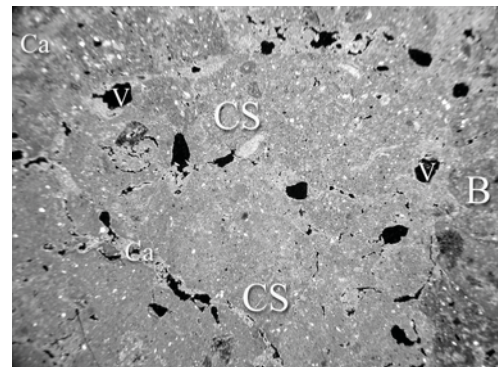


Figure 13: Microphotograph of basal silts at White Horse Stone ARC WHS98 (Macphail and Crowther 2006). Sample 300a - calcium carbonate (Ca) cemented Older Dryas (?) deposits, with relict root channels (voids - V) and welded chalk soil (CS) clasts; some voids (V) are part infilled with secondary calcium carbonate (Ca); a later burrow (B) could date to the Allerød(?). Cross polarised light (XPL), width is ~7mm.