

*Plate 1: Lower slopes of White Horse Stone dry valley under excavation (view south)*



*Plate 2: Late Glacial deposits and overlying Iron Age palaeosol (Section 602)*





*Plate 3: Sarsen boulders and Iron Age palaeosol on the lower valley slopes (view north)*

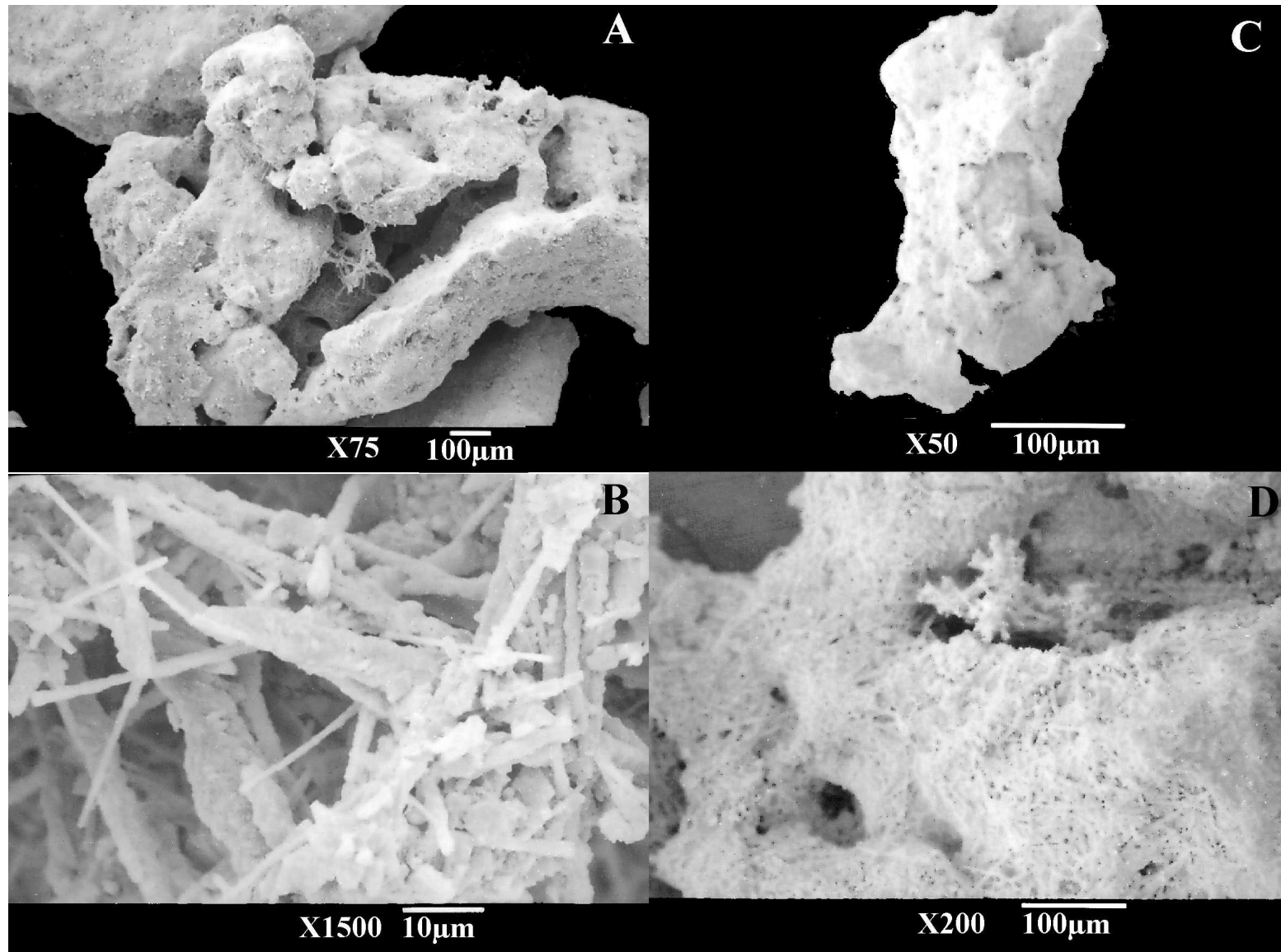


*Plate 4: Iron Age palaeosol and colluvium on the lower valley slopes (Section 140)*





*Plate 5: Secondary carbonate accumulations from snail sample residues (Layer 4936 Profile F)*



*Plate 6: Calcite granules from snail sample residues (layer 4144 Profile C)*

